

**Access  
Community  
Health  
Centers**

**GENERAL NOTES**

1. Parking lot dimensions are from face of curb to face of curb unless noted otherwise
2. It shall be the responsibility of the subcontractors to notify all applicable utility companies who may be affected by the proposed work. The subcontractor shall make every effort to protect existing utility lines and shall repair any damages at their own expense. The subcontractors shall also coordinate their activities with other subcontractors to ensure compliance with the project schedule.
3. All site concrete shall have a minimum 28 day compressive strength of 4000 psi, a slump of 4", an air content of 6% and a maximum water to cement ratio of 0.48

**SITE LEGEND**

- EXISTING**
- Contours 100.0
  - Spot elevations
  - Trees to be saved
  - Trees to be removed
  - Storm sewer main / lateral 12 ST
  - Sanitary sewer main / lateral 6 SA
  - Water main / lateral 4 W
  - Gas main / lateral GAS
  - Overhead Electrical service OH/E
  - Underground electric service UG/E
  - Overhead Telephone service OH/T
  - Underground Telephone service UG/T

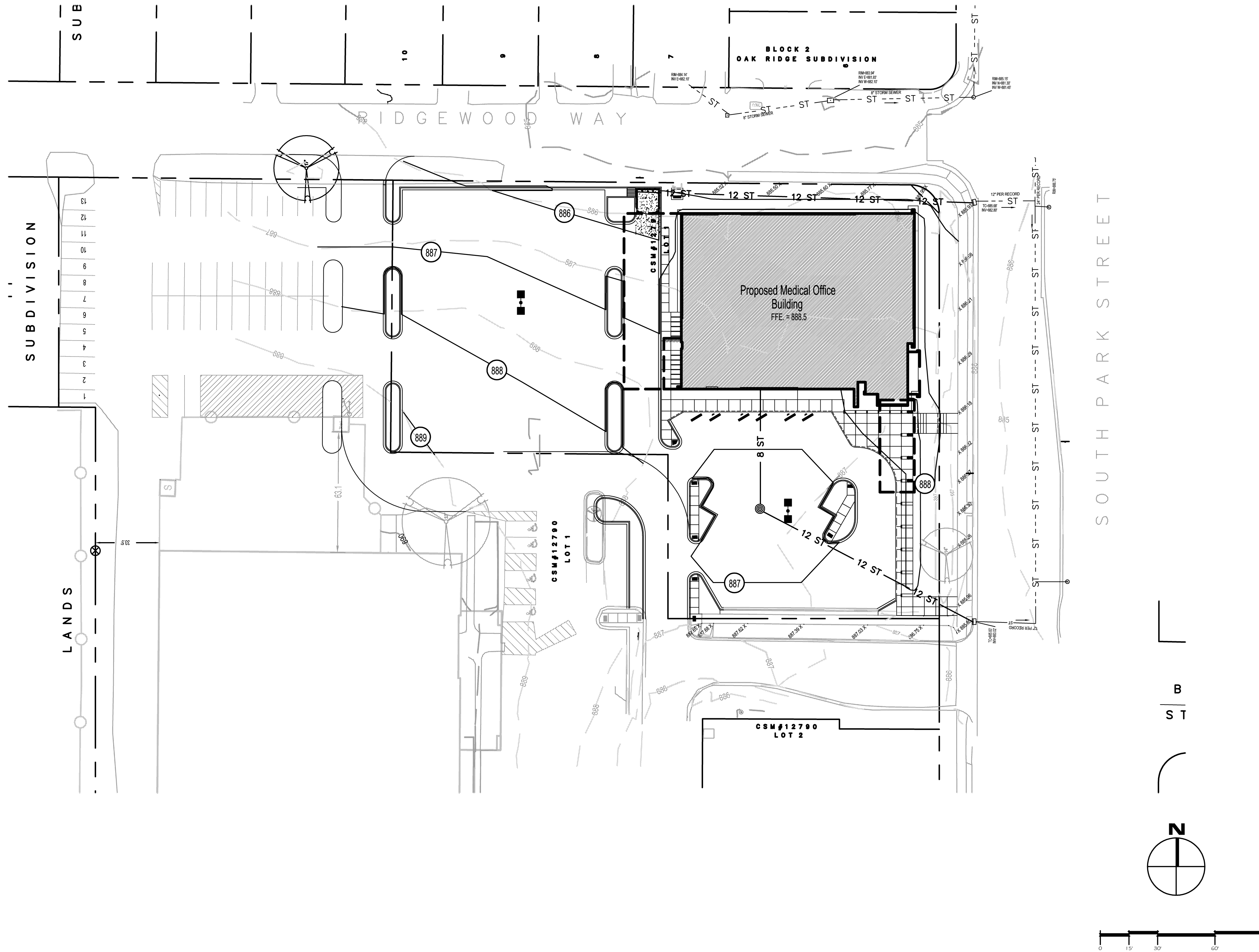
- PROPOSED:**
- Contours 100.0
  - Spot elevations
  - Trees
  - Shrubs
  - Storm sewer main / lateral 12 ST
  - Sanitary sewer main / lateral 6 SA
  - Water main / lateral 4 W
  - Gas main / lateral GAS
  - Overhead Electrical service OH/E
  - Underground Electric service UG/E
  - Overhead Telephone service OH/T
  - Underground Telephone service UG/T
  - Cable Television service COMM

- MISCELLANEOUS:**
- Property line N 90° 0' 0" E 11.32'
  - Setback line
  - Silt fence SF
  - Site Phasing line
  - Water line
  - 100 Yr. Flood line
  - Contract Limit line

- LANDSCAPING**
- Construction fence X - X - X
  - Irrigation Area Zone line
  - Landscape Edging line
  - Mowing line
  - Planting code symbol (Base Bid Plant)
  - Planting code symbol (Add Alternate Plant)

- SYMBOLS**
- Existing Parking lights
  - Proposed Parking lights
  - Soil boring location & Number B1

- | EXISTING | PROPOSED |                               |
|----------|----------|-------------------------------|
|          |          | Precast Flared end section    |
|          |          | Concrete Headwall             |
|          |          | Storm Catchbasin              |
|          |          | Sanitary & Storm Manhole      |
|          |          | Storm gooseneck               |
|          |          | Cleanout                      |
|          |          | Storm inlet protection        |
|          |          | Fire Hydrant                  |
|          |          | Siamese Connection            |
|          |          | Water Valve                   |
|          |          | Water Meter                   |
|          |          | Gas Meter                     |
|          |          | Power pole                    |
|          |          | Handicap signs                |
|          |          | Flag pole                     |
|          |          | Concrete Bollard              |
|          |          | Conc. filled Pipe Bollard     |
|          |          | Light Bollard                 |
|          |          | Flood light                   |
|          |          | Concrete pavement Slope Arrow |



Document Release

11-16-12 UDC REVIEW

Dwn: KUL Chk: TMA

Sheet Name  
**SITE GRADING  
PLAN**

Scale: 1" = 30'

Sheet Number

**C104**

Madison, WI  
6102