



Crossing Guard Policy Update

Transportation Commission
April 9, 2025

Kevin Luecke, Pedestrian & Bicycle Administrator

Agenda

1. Program Review
2. RESJI Review Background
3. Crossing Guard Request Process
4. Recommended Policy Recommendations

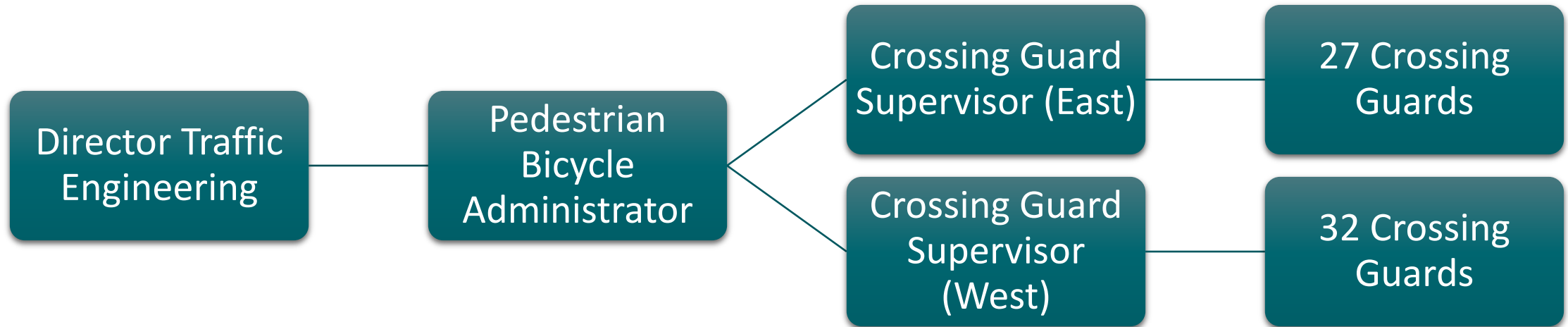


What is the Crossing Guard Program?

- Integral element in supporting active transportation to and from elementary school.
- Help children safely cross the street at key locations.
- Can increase parent comfort about their children walking or bicycling to school.
- Serve as role models by helping children develop the skills to cross streets safely.



Crossing Guard Program Structure



School Traffic Safety Team

MMSD

- Office of Safety & Security
- Transportation

City

- Traffic Engineering
- Parking
- Police Department

Other

- Wisconsin Bike Fed (Safe Routes To School Program)
- First Student, Inc. (Bus Company)

Crossing Guard Policy Need

- Address requests for new crossing guard location
- Consider removal of crossing guard location
- Describe data necessary for evaluation
- Define evaluation scoring
- Define actions to undertake based on evaluation score



Crossing Guard Policy Update

- **2022:** Transportation Commission request to perform RESJI review of Policy
- **2023-2024:** RESJI review and staff meetings
- **2025:** Revised policy proposed
 - Integrate changes from RESJI analysis
 - Streamline policy



RESJI Review

RESJI Analysis Team

- Pedestrian Bicycle Administrator
- Pedestrian Bicycle Outreach Specialist
- Crossing Guard Supervisors
- Planner/Neighborhood Resource Team Leader
- MMSD Safety & Security Director
- Crossing Guard
- Traffic Engineer
- Wisconsin Bike Fed Safe Routes to School Coordinator

RESJI Analysis Considerations

- What factors associated with the crossing guard policy **might be affecting communities of color and/or low-income populations differently?**
- What are **potential unintended consequences** of current policy or potential changes to the policy? What **benefits or burdens** may result from current policy or changes?
- Are there **potential disproportionate impacts** on communities of color or low-income communities related to this policy?
- Who could **benefit from changes** to the current policy? Who would **benefit from keeping** policy the same?
- Who would be **burdened by changes** to the current policy? Who would be **burdened by keeping** policy the same?

RESJI Team - Items Discussed

- Number of students required for a new location
- Hazard score points awarded for number of children crossing
- *Other Factors* Points & Racial Equity & Social Justice Considerations
- Location Discontinuation Policy
- Pilot Locations
- Distance Between Crossings
- Infrastructure Improvements
- Private Schools
- Other Issues



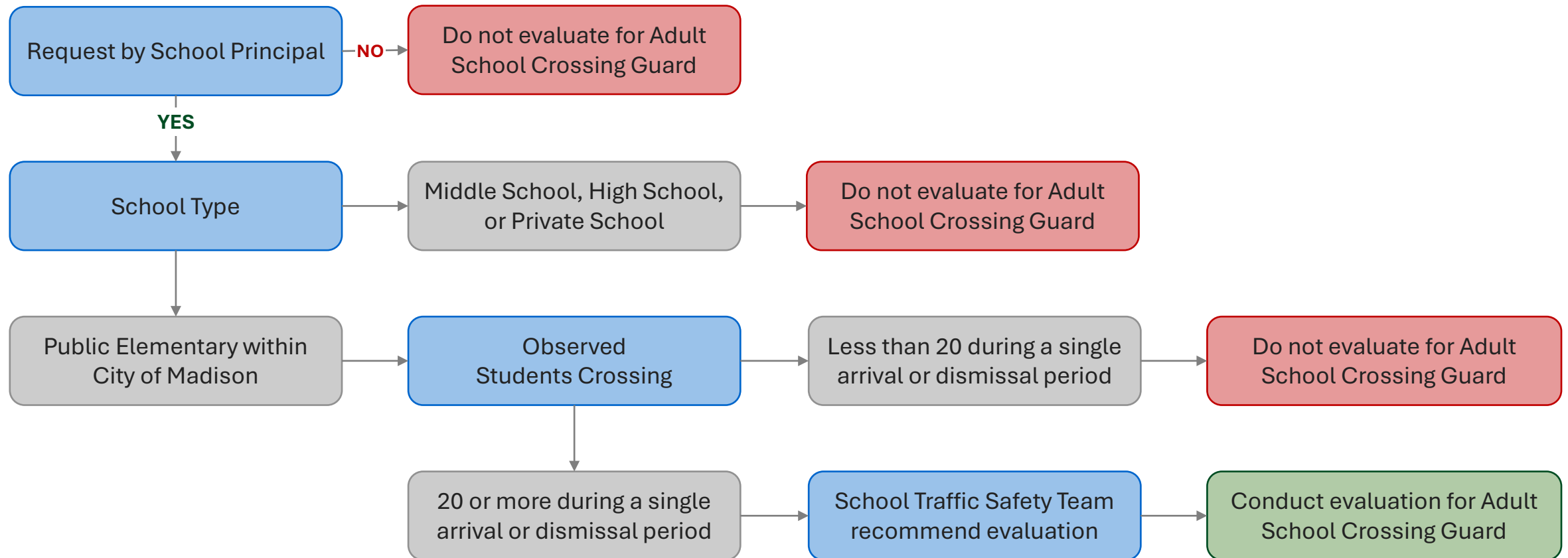
Crossing Guard Evaluation Process

Requirements for Crossing Guard Evaluation

1. The request for an Adult School Crossing Guard must be submitted to Traffic Engineering or the School Traffic Safety Team by the school principal.
2. The request must be for a public elementary school located within the City of Madison.
3. A minimum of **20** elementary school students are observed crossing at the location during a single school arrival or dismissal period.



Crossing Guard Evaluation Request Process



Crossing Guard Policy Proposed Revisions

Policy & Process Proposed Revisions

2016 Policy Section	Proposed Revision(s)
Cover Page	Added “Elementary” to the title of the Policy
Introduction	Simplified section and removed history of the Policy
Background: School Crossing Hazard Analysis Techniques	Removed section

Policy & Process Proposed Revisions

2016 Policy Section	Proposed Revision(s)
NEW SECTION	Added <i>Criteria and Process for Evaluation of New Adult School Crossing Guard Placement</i> section that describes the process for initiating evaluation of a location; aligned minimum student count for all types of elementary schools; primarily consolidated information from various sections of 2016 Policy
Procedure to Study The Discontinuance of an Adult School Crossing Guard Location	Moved from back of 2016 document and renamed to <i>Criteria and Process for Discontinuance of an Existing Adult School Crossing Guard Assignment</i> Proposed changes: <ul style="list-style-type: none">• Clarified “low number of students” to mean less than 10 per shift over a two-year period• Clarified street design changes that may trigger an evaluation• Clarified evaluation process

Policy & Process Proposed Revisions

2016 Policy Section	Proposed Revision(s)
The Adopted Criteria, 2016	<ul style="list-style-type: none">• Renamed to <i>Hazard Evaluation Criteria</i>• Removed the number of elementary school students crossing from the evaluation• No significant changes to processes for Vehicle Gap Availability, Speed of Motor Vehicles, Sight Distance, Safety History, or Other Factors

Policy & Process Proposed Revisions

2016 Policy Section	Proposed Revision(s)
The Hazard Rating System	<ul style="list-style-type: none">• Renamed to <i>Hazard Scoring</i>• Removed the number of elementary school students crossing from the evaluation• No changes to scores for Vehicle Gap Availability, Vehicle Speeds, Sight Distance, Safety History• Other Factors<ul style="list-style-type: none">• Consolidated factors related to complex crossings• Removed Foreign Traffic Route as a metric• Added Designated Truck Route and removed Observations of the Percent and Types of Trucks• Added Location is Within or Serves Students Who Likely Live Within A City of Madson Equity Area

Other Factors Recommended Revisions

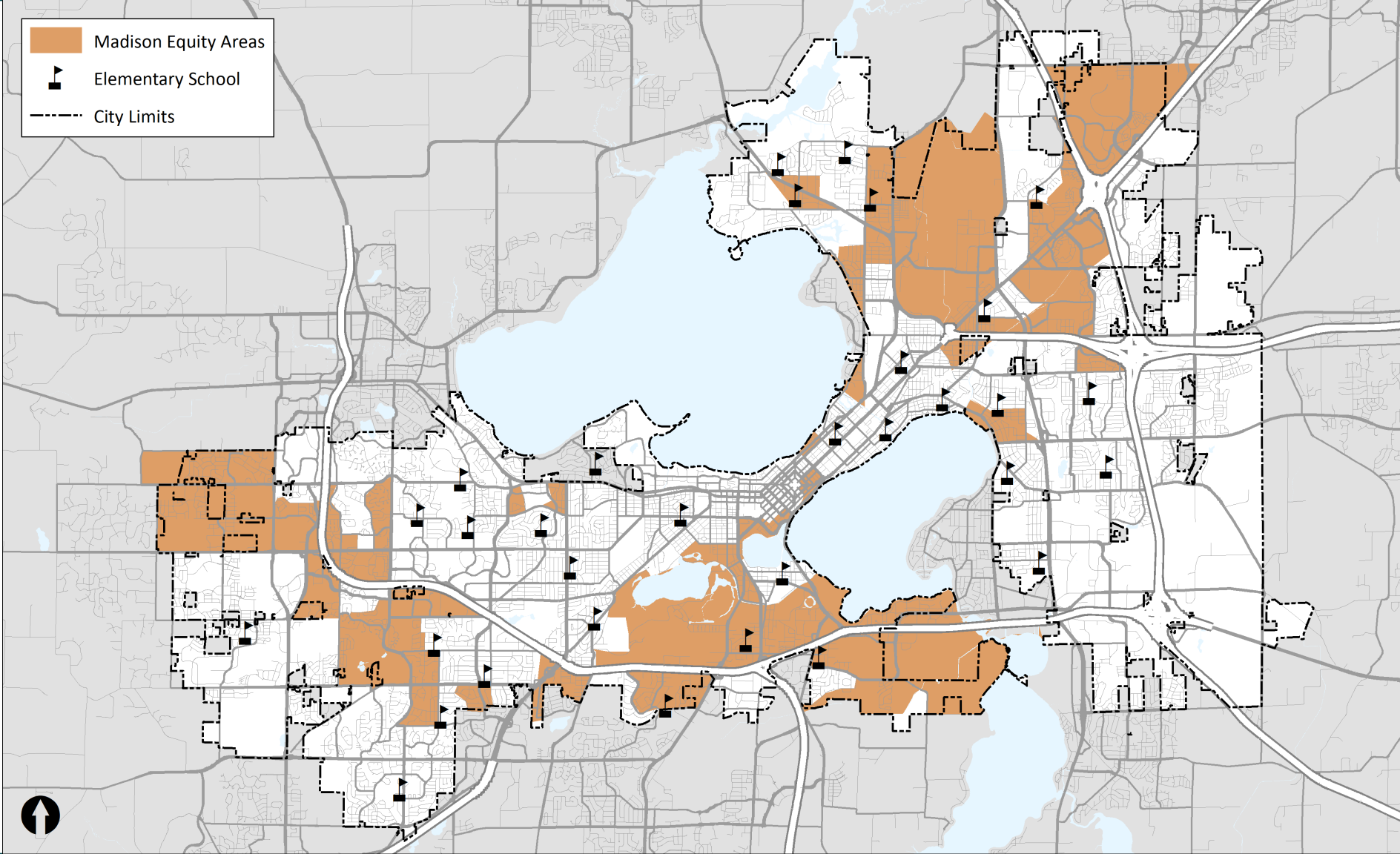
2016 Policy

Factor
Foreign traffic route
For each approach in excess of four
For complex signal or crossing design
For simple signal or crossing design
Safer crossing one block out of way
Large percentage of Grade K and Grade 1 students (over 40%)
An intersection of two arterial streets where the total weekday traffic approach volume exceeds 25,000 vehicles
Children crossing multiple crosswalks at an intersection
Stopped buses and other obstructions
Volume of turning traffic not reflected in gap availability
Observations of the percent and types of trucks during the times when students are using the crossing.

2025 Recommended Revisions

Factor
Safer crossing within one block of evaluated crossing location
Intersection of two arterial streets
Designated truck route
Complex signal or crossing design or more than four approaches
Stopped buses or other visual obstructions of the crossing
Frequent U-turns or non-typical vehicle movements
Large percentage (50%+) of K-2 students unaccompanied by an adult
Majority of children crossing multiple crosswalks at an intersection
Location is within or serves students who likely live within a City of Madison Equity Area

City of Madison Equity Areas



Policy & Process Proposed Revisions

2016 Policy Section	Proposed Revision(s)
Interpretation of Hazard Rating	<ul style="list-style-type: none">• Renamed to <i>Actions</i>• Reduced score thresholds in all sections to reflect removal of the number of students from the scoring criteria• Consider marking the location as a school crossing: Reduced the score threshold from 20 to 15• Install a flashing beacon: Removed section• Assign an Adult School Crossing Guard: Reduced the score threshold from 40 to 30 with use by a minimum of 20 elementary school students; all new locations will be considered pilots• Discontinuance an Adult School Crossing Guard: Reduced the score threshold from 30 to 20 with use by fewer than 10 elementary school students• Added that locations evaluated but not recommended for an Adult School Crossing Guard be reviewed for other safety treatments

Hazard Rating Recommended Revisions

2016 Policy

>20 points
≥25 students

Mark as School Crossing

>30 points
≥25 students

Install Flashing Beacons

>40 points
≥25 students

Assign Crossing Guard

<30 points
<15 students

Discontinue Crossing
Guard location

2025 Recommended Revisions

>15 points
≥20 students

Mark as School Crossing

>30 points
≥20 students

Assign Crossing Guard

<20 points
<10 students

Discontinue Crossing
Guard location

Recommended Revisions Summary

- More concise, with clearer process guidance
- Reduced thresholds for new guard locations and to remove existing locations
- Simplified scoring criteria
- Added equity criteria





Discussion

Transportation Commission
April 9, 2025

Kevin Luecke, Pedestrian & Bicycle Administrator