

CERTIFIED SURVEY MAP No. _____

PART OF OUTLOT "B", NORTH GARDENS; AND PART OF LOTS 123 AND 124, FARWELL'S ADDITION TO THE VILLAGE OF MADISON, ALL LOCATED IN THE NORTHEAST 1/4 OF THE NORTHEAST 1/4, SECTION 06, TOWNSHIP 07 NORTH, RANGE 10 EAST OF THE FOURTH PRINCIPAL MERIDIAN, CITY OF MADISON, DANE COUNTY, WISCONSIN



SCALE : ONE INCH = EIGHTY FEET

GRID NORTH

WISCONSIN COUNTY
COORDINATE SYSTEM, DANE
ZONE, NAD83(91) DATUM
PER CITY OF MADISON



SURVEYED FOR:
BASHFORD UNITED METHODIST CHURCH
OF MADISON, WISCONSIN, INC.
329 NORTH STREET
MADISON, WI 53704

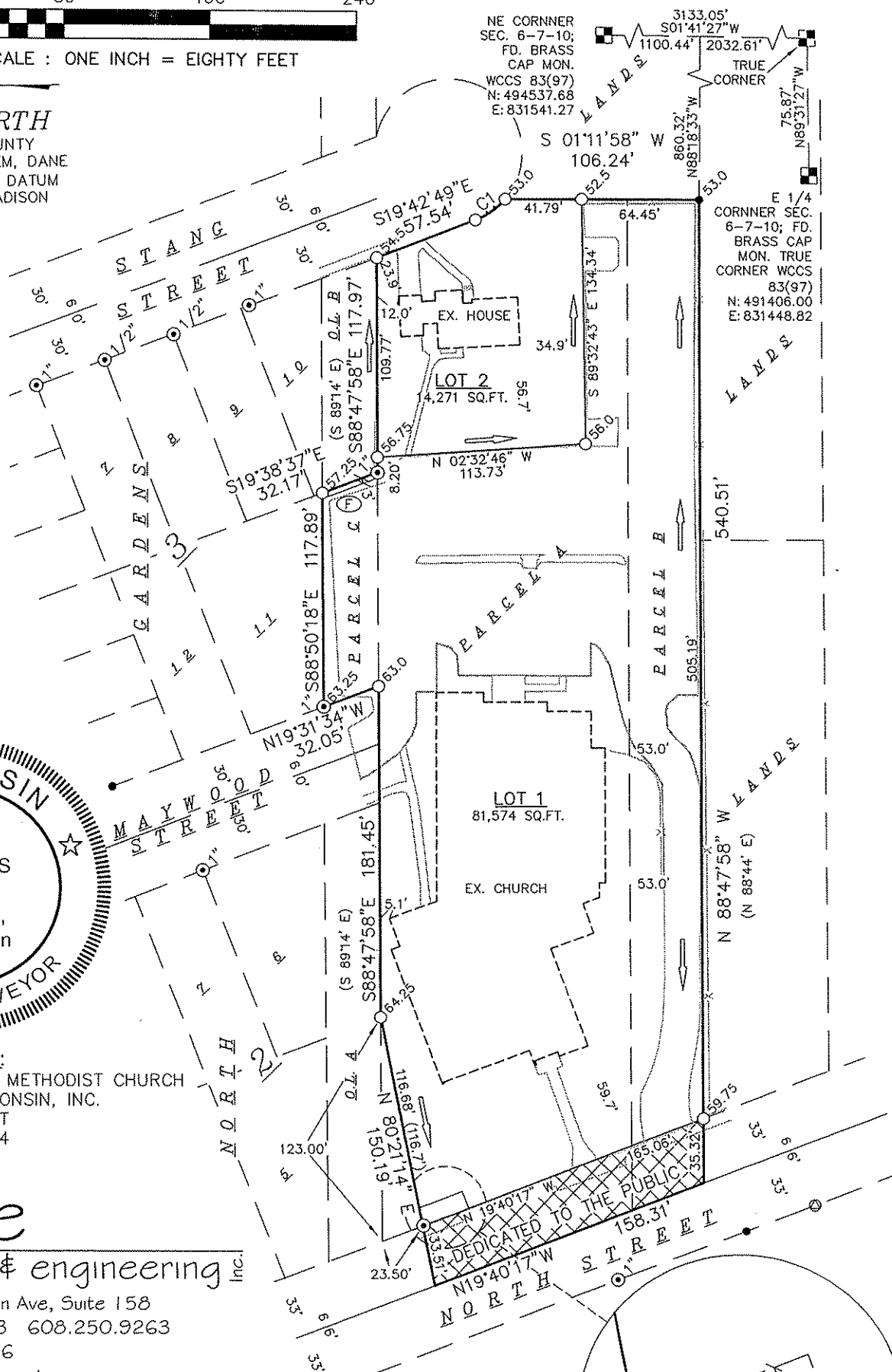
SURVEYED BY:

Burse

surveying & engineering Inc.

1400 E. Washington Ave, Suite 158
Madison, WI 53703 608.250.9263
Fax: 608.250.9266
email: burse@chorus.net
www.bursesurveyengr.com

CURVE	LENGTH	RADIUS	DELTA	CHORD DIR.	CHORD
C1	20.04'	40.00'	28°42'33"	S34°04'10"E (S35°26'30"E)	19.83' (19.95')



NE CORNER
SEC. 6-7-10;
FD. BRASS
CAP MON.
WCCS 83(97)
N: 494537.68
E: 831541.27

E 1/4
CORNER SEC.
6-7-10; FD.
BRASS CAP
MON. TRUE
CORNER WCCS
83(97)
N: 491406.00
E: 831448.82

DEDICATED TO THE PUBLIC
NORTH STREET