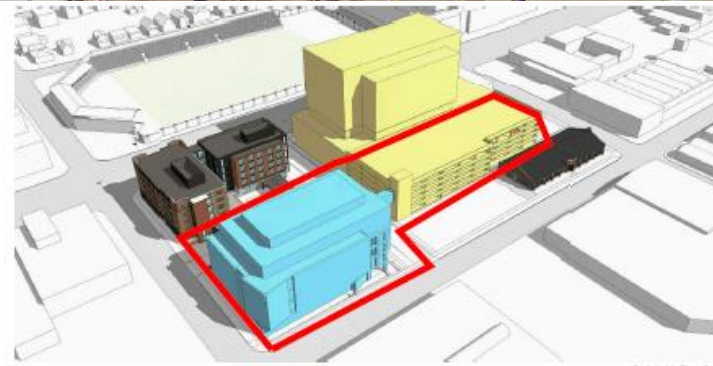
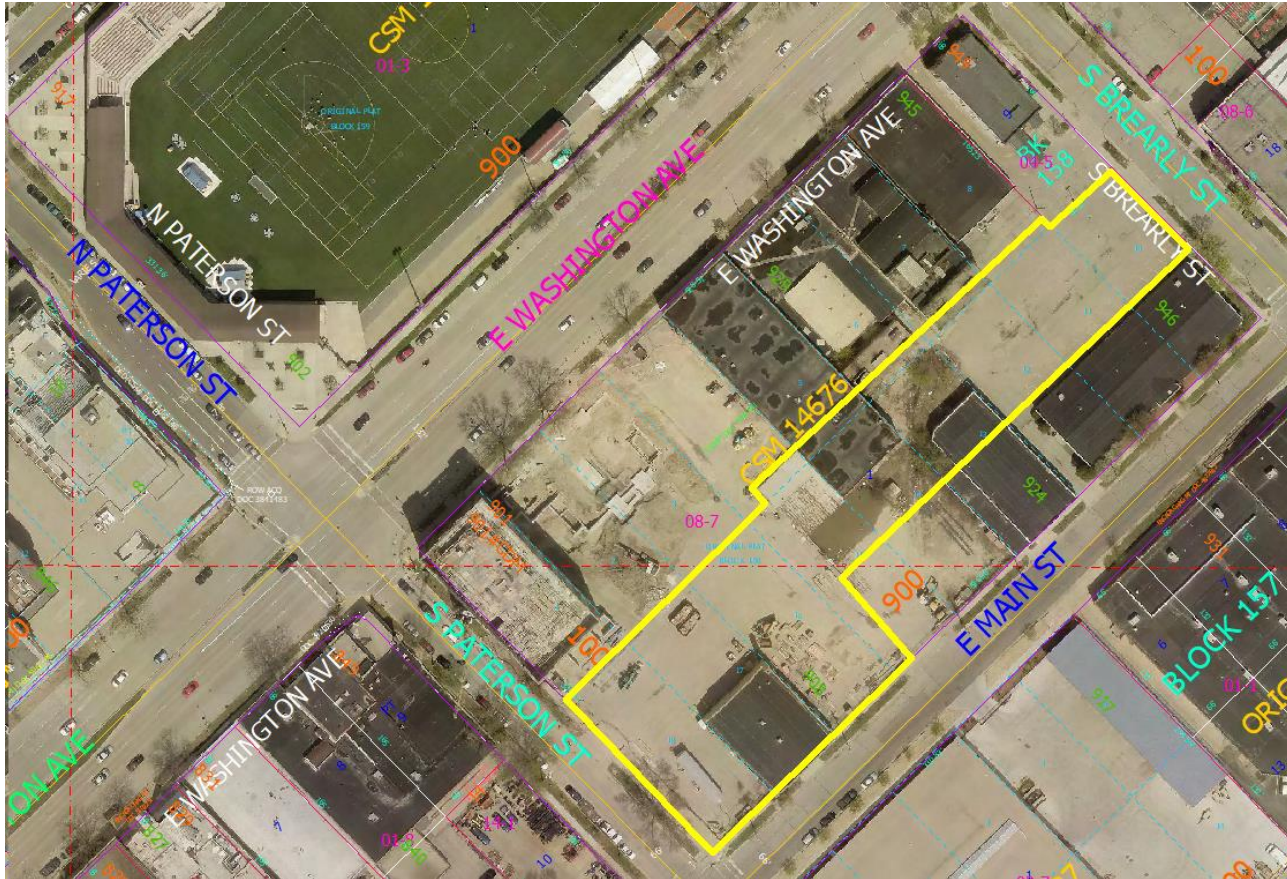
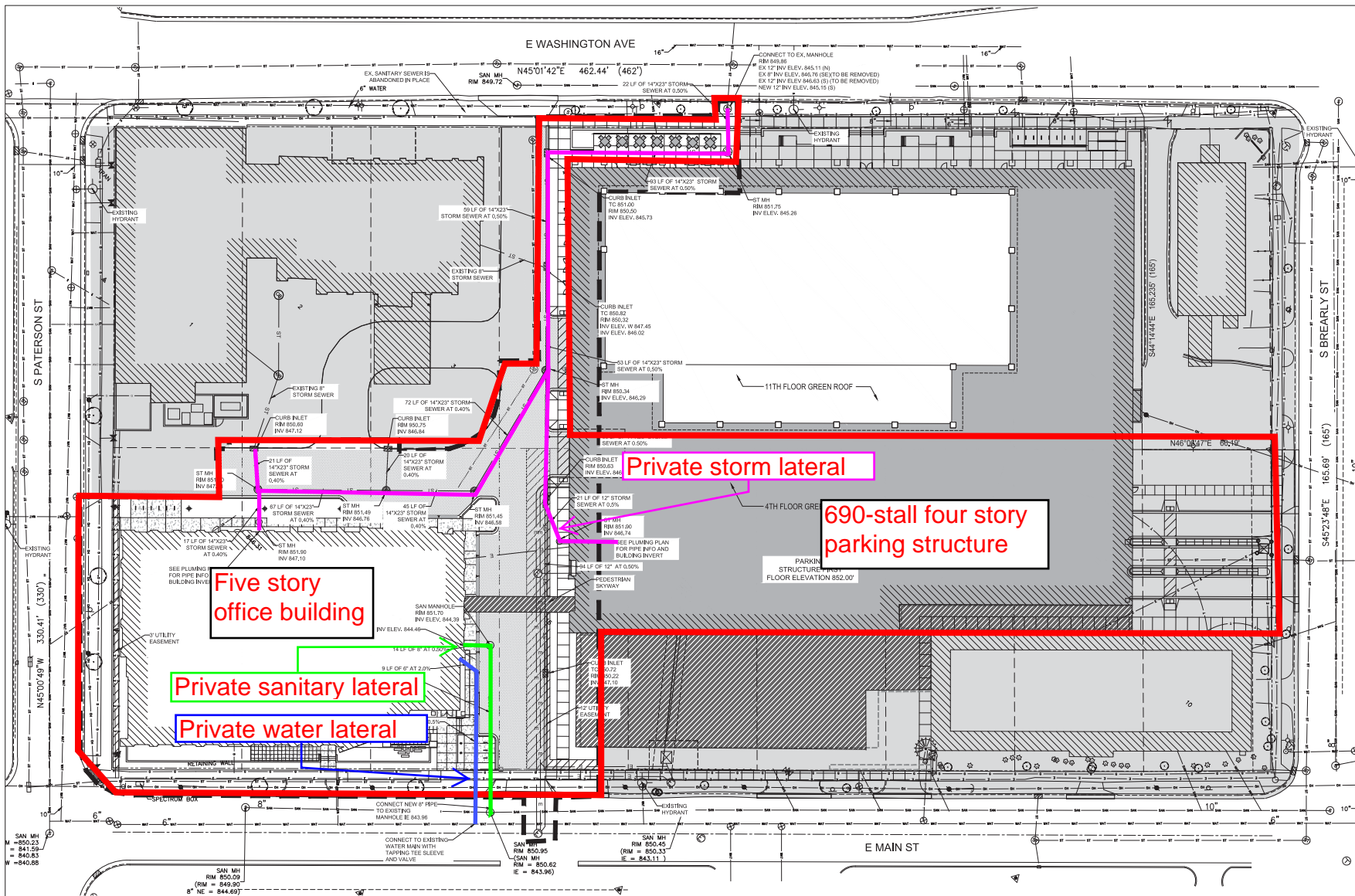


908 E Main Street

Project 13246, Contract 8954

Developer Agreement Scope: Private utility connections to public facilities. Replacement of construction damaged sidewalk. Pedestrian lighting per Traffic Engineering.





**Five story
office building**

Private sanitary lateral

Private water lateral

Private storm lateral

**690-stall four story
parking structure**

- STORM CONSTRUCTION**
1. ALL STORM SEWERS SHALL BE CONSTRUCTED IN ACCORDANCE WITH THE CITY OF MADISON SPECIFICATIONS, STANDARD SPECIFICATIONS FOR SEWER AND WATER CONSTRUCTION IN WISCONSIN, AND STANDARDS OF THE WISCONSIN DEPARTMENT OF COMMERCE FOR PRIVATE STORM SEWER.
 2. ALL STORM SEWER 12" IN DIAMETER, OR GREATER, SHALL BE CLASS II REINFORCED CONCRETE PIPE (ASTM C75) OR CORRUGATED POLYETHYLENE PIPE WITH SMOOTH INTERIOR (ASTM D3025). JOINTS FOR ALL CONCRETE PIPE SHALL BE RUBBER GASKET. ALL STORM SEWERS 12" IN DIAMETER OR LESS SHALL BE PVC SCHEDULE 40 PIPE WITH GUNDED JOINTS.
 3. CLASS C BEDDING SHALL BE USED FOR ALL STORM SEWERS. TRENCHES SHALL BE BACK FILLED WITH COMPACTED COURSED STONE IN FINISHED AREAS AND STONE IN LANDSCAPE AREAS.
 4. STORM SEWER MANHOLES AND CATCH BASINS SHALL BE CONSTRUCTED IN ACCORDANCE WITH LOCAL REQUIREMENTS.
 5. THE STORM SEWER CONTRACTOR SHALL BE RESPONSIBLE FOR KEEPING ALL LINES CLEAR UNTIL ACCEPTANCE BY THE OWNER.
 6. ALL SURPLUS EXCAVATED MATERIAL SHALL BE COORDINATED WITH THE GENERAL CONTRACTOR FOR ITS TEMPORARY LOCATION.
 7. THE RIGHT-OF-WAY IS THE SOLE JURISDICTION OF THE CITY OF MADISON AND IS SUBJECT TO CHANGE AT ANY TIME PER THE RECOMMENDATIONS PLAN OF TRAFFIC ENGINEERING AND CITY ENGINEERING DEPTS.

LEGEND

○ SANITARY MANHOLE	○ YARD CLEANSOUT	○ STORM MANHOLE	○ STORM INLET	○ STORM CATCH BASIN	○ APFION ENDWALL	○ WATER MANHOLE	○ HYDRANT	○ WATER VALVE	○ GAS METER	○ GAS VALVE	○ LIGHT POLE	○ TRAFFIC SIGNAL	○ MONITORING WELL	○ ELECTRICAL OUTLET	○ UTILITY POLE	○ CITY WIRE (DEAD MAN)	○ ELECTRIC PRESTRESS	○ ELECTRIC MANHOLE	○ SCALE PEDESTAL	○ BOLLARD	○ SIGN	○ HANDICAP PUMP	○ HANDICAP STALL	○ STONE WALL	
— DATCH CURB	— REJECT CURB	— BURIED WATER MAIN	— SANITARY SEWER	— ST — STORM SEWER	— — — — — FENCE	— — — — — ROOF DRAIN	— — — — — OVERHEAD WIRES	— — — — — BURIED CABLE TV LINES	— — — — — BURIED ELECTRIC	— — — — — BURIED GAS MAIN	— — — — — FIBER OPTIC	— — — — — BURIED CATV MAIN	— — — — — CAUTION	— — — — — UTILITY EASEMENT	— — — — — RETRACK LINE	— — — — — BUILDING	— — — — — ADA TRUNCATED DOWNS	— — — — — AREA NOT ALLOWED BY THE WHEHA DEVELOPMENT							

Notes:

Archipelago Village

WHEHA Office Building -
Condominium Unit 2

WHEHA Building
908 E Main St

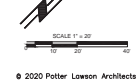
Madison, Wisconsin

Project #: 2016.36.03

Date	Issuance/Revisions	Symbol
03/11/2020	MADISON LUA	

**WHEHA SITE
UTILITY PLAN**

C105



© 2020 Potter Lawson Architects