

Waterfall Mural
316 W. Washington Ave., Madison, WI.

Artist Jonathan Brown

An "overflowing" impression of optimism and applied science.



Overview

This waterfall mural concept consist of acrylics/latex on waterproof board sealed in exterior UV resistant polyurethane. The mural will have a variety of textural and reflective pigmentation effects. Utilizing an array of lighting to simulate energy and movement.

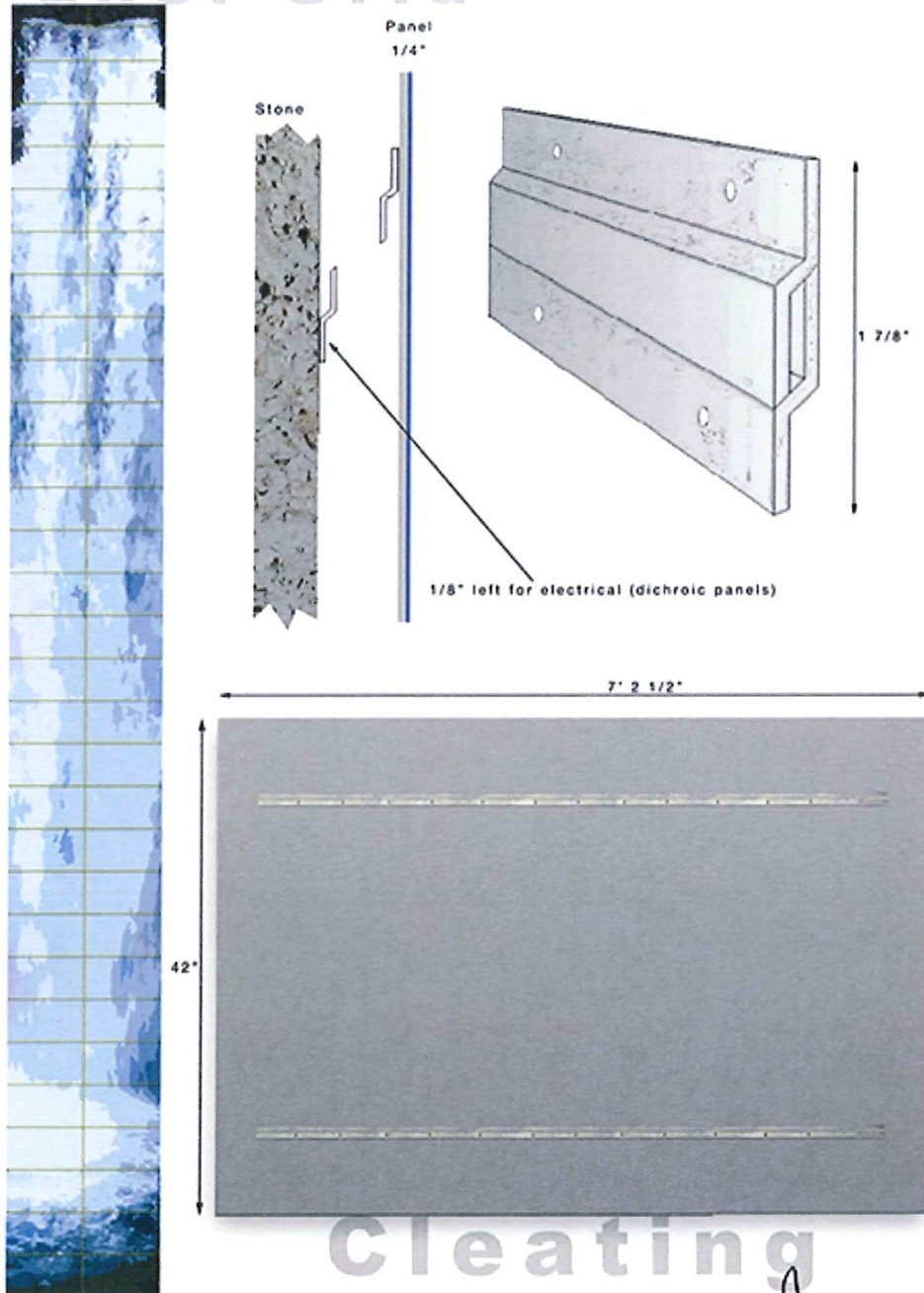
Process

Mural size to be 121' H. x 14' 5" W. Consisting of Sixty Two (62) panels. Hand colored, crafted using acrylics and latex on Hardibacker panels, sealed in exterior UV resistant polyurethane, Primary textural pigments include reflective micro glass spheres and metallic flakes.

(Reference; cleating image below)

Each panel secured to the face of the building using a tightly fit wall mount system (French cleating) consisting of Two (2) Z-Bar cleats per panel, 60" W. x 1 1/4" each. 1/4" is estimated gap from exterior stone backside of mural. Panels and cleating system bolted into the buildings 4" thick exterior stone.

Panel Grid

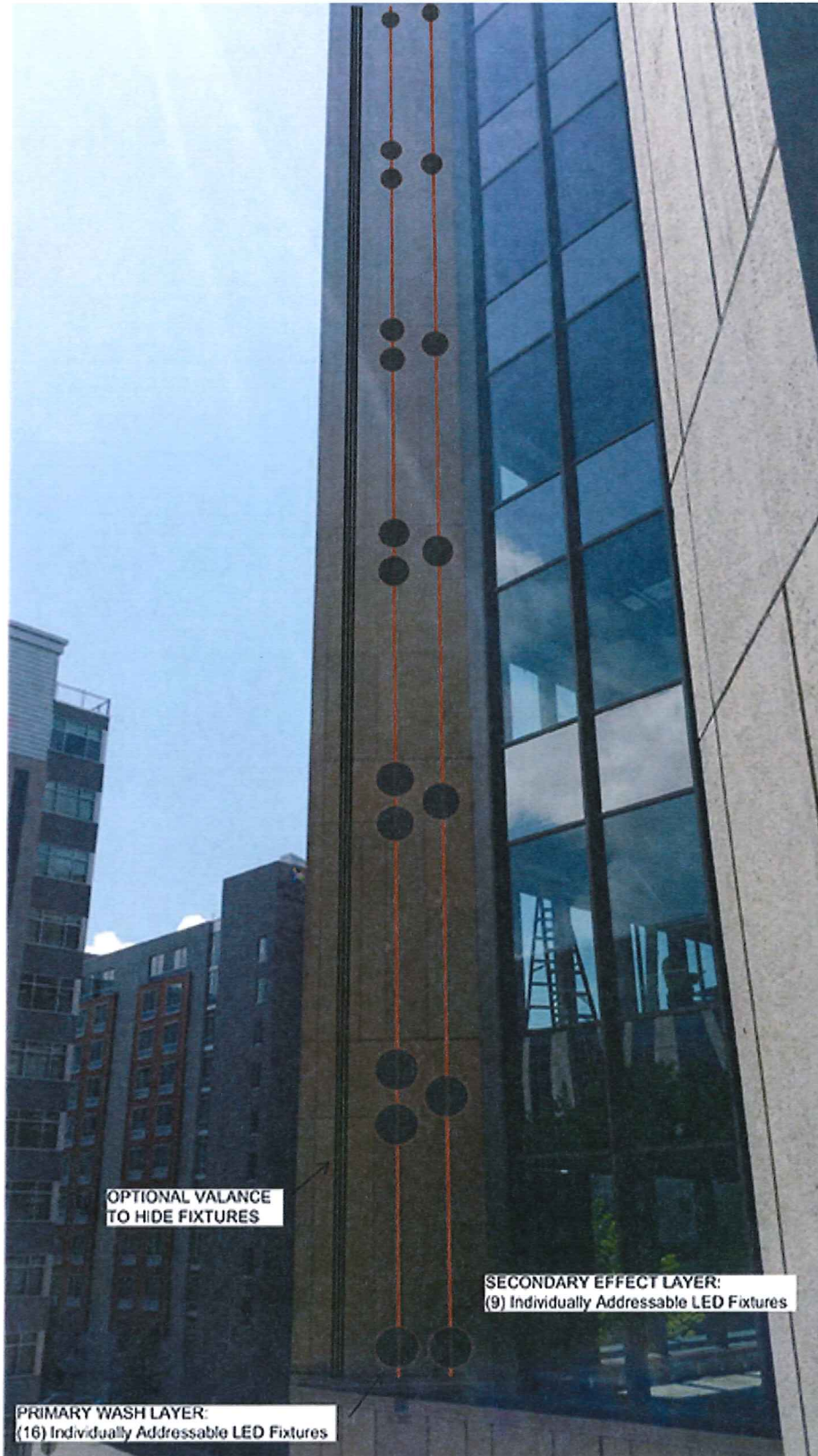


An estimated weight of mural is 3.2 lbs/psf complete with cleats, making each panel weather resistant and lightweight. 5614.4 lb. for total mural.

Lighting

Twenty Five (25) fixtures mounted vertically on the left side of the mural, mounted to conduits that are attached to building hidden from street view.

(Reference; fixture location layout below)



Eighty (80) color changing LED small round nodes mounted with-in the mural's light tones to create energy and motion.

(Reference; node and ribbon layout below)

Approximately (280 Linear Feet) of color changing LED Neon ribbon mounted with-in the mural, hugging the dark tones to create energy and motion.

All lighting to be controlled by one programmable unit with-in building.



[Handwritten signature]

Side Window Treatments

Dichroic windows coverings

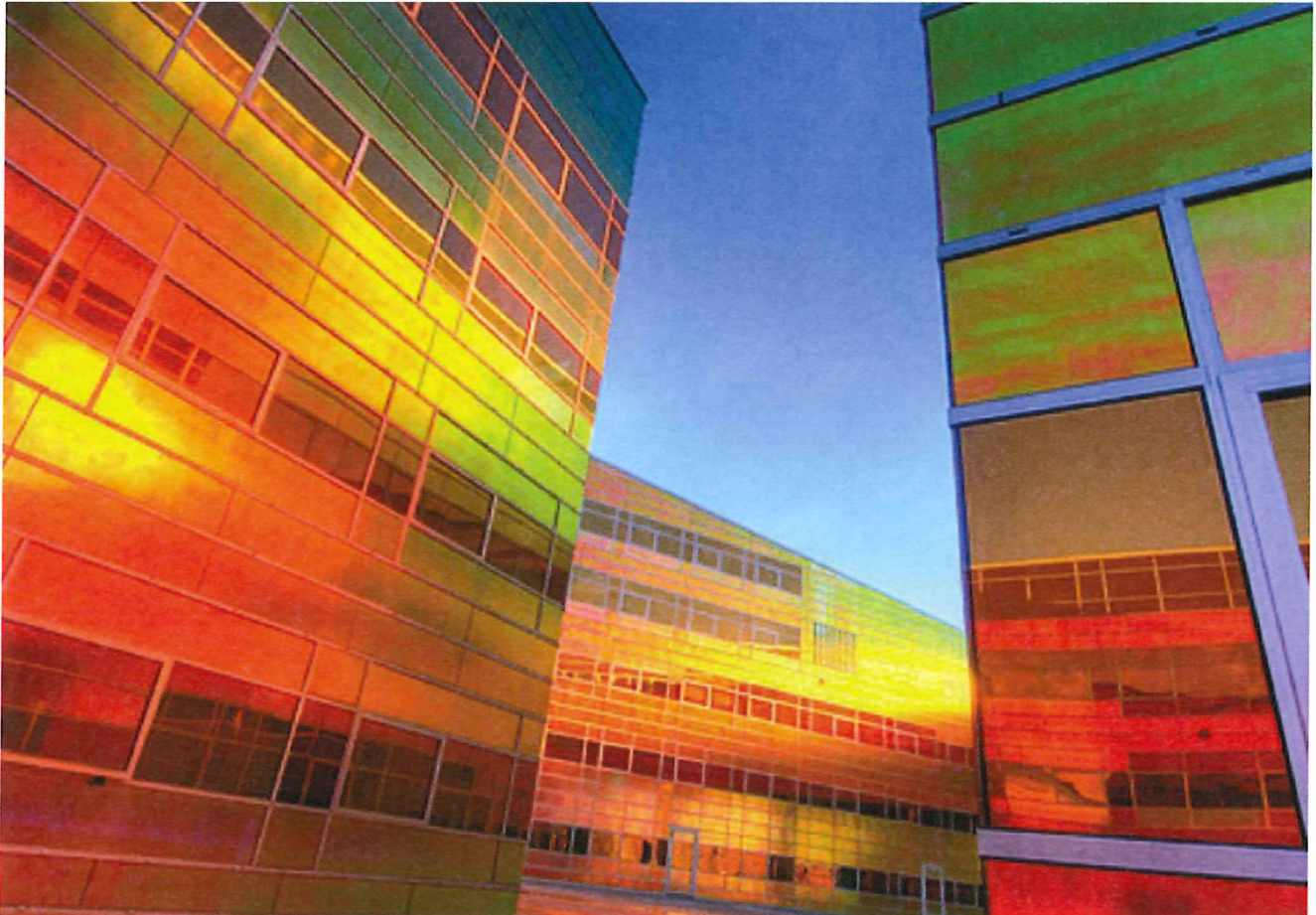
(Reference; dichroic sample image below).

The term for dichroic is used in which, typically glass displays two different colors by undergoing a color change in certain lighting conditions.

Treatment Process

Three layers, 1/8" polycarbonate backing, dichroic film (3M product, Chill) and covered in 1/8" UV resistant acrylic.

Size of each panel, 33 1/2" W. x 10' H. Thirteen (13) panels per side (130' 4" H. each side). Creating reflective and clean, colorful mirrored like windows to frame the murals energy and motion.



Artistic Goals

- Comprising the acrylics and resins in such a way to resemble glass impressions.
- Lighting the materials to enhance the murals reflective composition many dimensions and characteristics to pop out.
- Create movement.

Additional installation, the awning.

* Concept in review.

Stained glass on tempered glass panels, steel or channel frame.



Jonathan Brown
2015

Thank you for your consideration,
Artist
Jonathan Brown