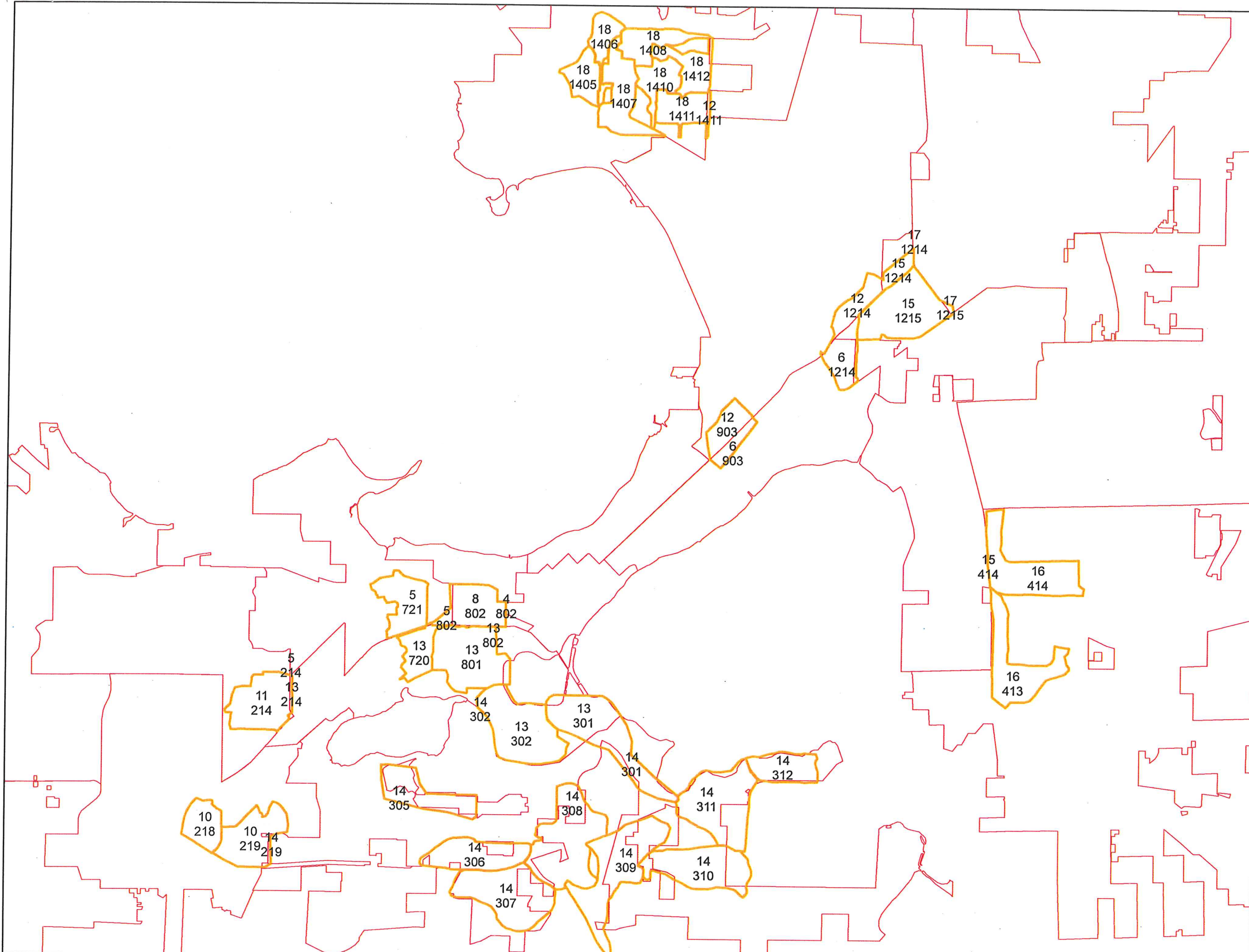




Alderman District MGE Trim Area Number

May 2017



GIS Data / Mapping Disclaimers

Madison Gas and Electric Company ("MGE") is providing you access to its GIS mapping data ("Information"), in electronic format or print format, as a resource of general information for use "as-is." The Information provided is for reference purposes only and it and shall remain the property of MGE. This Information may not be copied, distributed, rented, or altered for subsequent use, in whole or in part, without the express written consent of MGE. The Information provided may contain inaccuracies or errors. Source data used for the Information may have been collected at different scales, times or definitions, resulting in inconsistencies among features represented together as part of this Information. MGE makes no representation regarding the accuracy, reliability, or completeness of the Information. The use of this Information is at your own risk.

By accessing this Information, you agree and acknowledge that receipt of the Information in no way releases you from following required and standard protocols in the course of normal business including but not limited to calling and relying upon Digger's Hotline.

By using the Information you hereby release MGE, its officers, directors, employees and agents from any responsibility or liability associated with its use. In no event will MGE be liable for any damages whatsoever that may arise out of the use of the Information.



Alderman District
MGE Trim Area Number

May 2017



GIS Data / Mapping Disclaimers

Madison Gas and Electric Company ("MGE") is providing you access to its GIS mapping data ("Information"), in electronic format or print format, as a resource of general information for use "as-is." The Information provided is for reference purposes only and is and shall remain the property of MGE. This Information may not be copied, distributed, rented, or altered for subsequent use, in whole or in part, without the express written consent of MGE. The Information provided may contain inaccuracies or errors. Source data used for the Information may have been collected at different scales, times or definitions, resulting in inconsistencies among features represented together as part of this Information. MGE makes no representation regarding the accuracy, reliability, or completeness of the Information. The use of this Information is at your own risk.

By accessing this Information, you agree and acknowledge that receipt of the Information in no way releases you from following required and standard protocols in the course of normal business including but not limited to calling and relying upon Digger's Hotline.

By using the Information you hereby release MGE, its officers, directors, employees and agents from any responsibility or liability associated with its use. In no event will MGE be liable for any damages whatsoever that may arise out of the use of the Information.

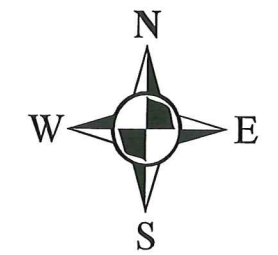
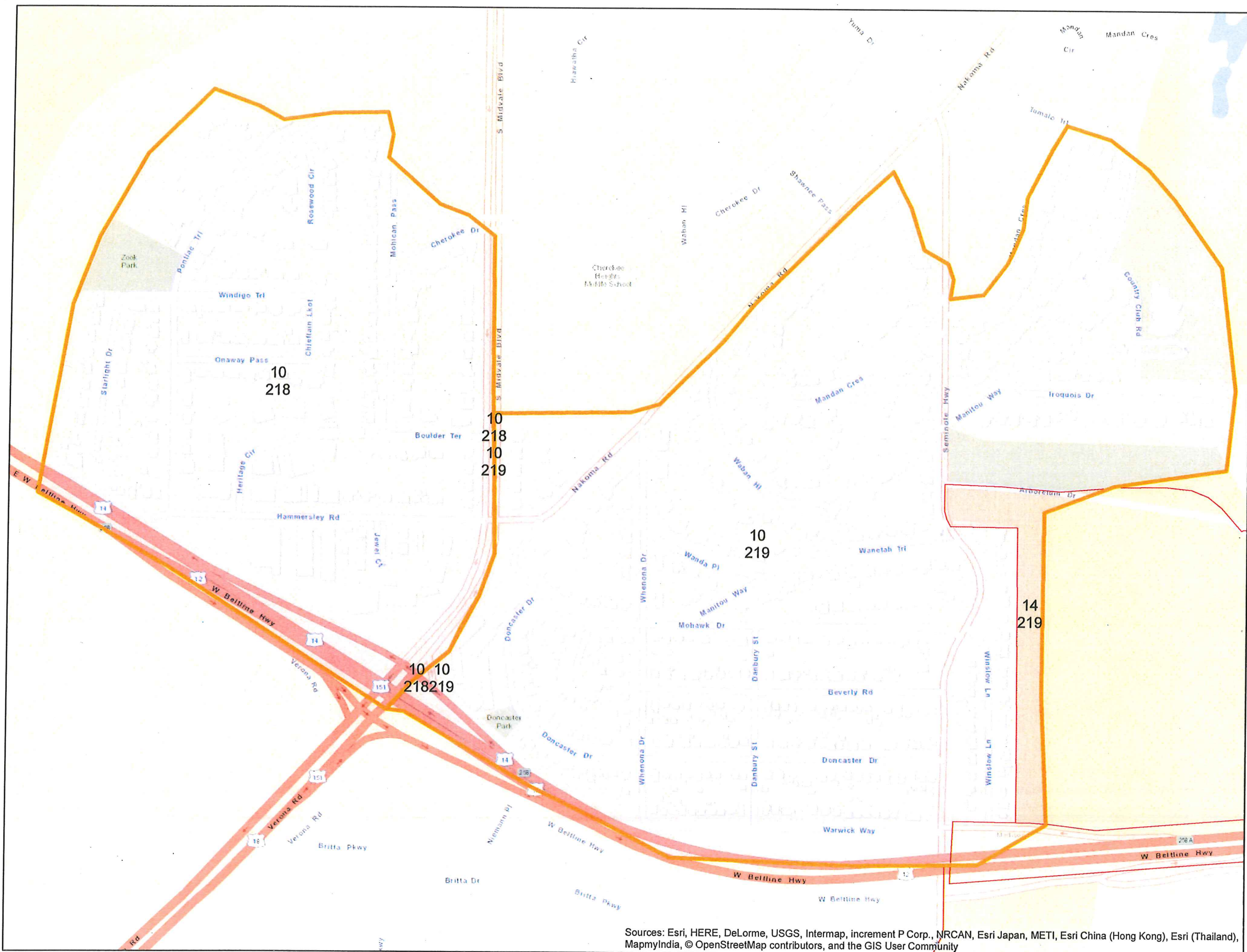
Sources: Esri, HERE, DeLorme, USGS, Intermap, increment P Corp., NRCAN, Esri Japan, METI, Esri China (Hong Kong), Esri (Thailand), MapmyIndia, © OpenStreetMap contributors, and the GIS User Community





Alderman District MGE Trim Area Number

May 2017



GIS Data / Mapping Disclaimers

Madison Gas and Electric Company ("MGE") is providing you access to its GIS mapping data ("Information"), in electronic format or print format, as a resource of general information for use "as-is." The Information provided is for reference purposes only and it shall remain the property of MGE. This Information may not be copied, distributed, re-used, or altered for subsequent use, in whole or in part, without the express written consent of MGE. The Information provided may contain inaccuracies or errors. Source data used for the Information may have been collected at different scales, times or definitions, resulting in inconsistencies among features represented together as part of this Information. MGE makes no representation regarding the accuracy, reliability, or completeness of the Information. The use of this Information is at your own risk.

By accessing this Information, you agree and acknowledge that receipt of the Information in no way releases you from following required and standard protocols in the course of normal business including but not limited to calling and relying upon Digger's Hotline.

By using the Information you hereby release MGE, its officers, directors, employees and agents from any responsibility or liability associated with its use. In no event will MGE be liable for any damages whatsoever that may arise out of the use of the Information.



Alderman District MGE Trim Area Number

May 2017

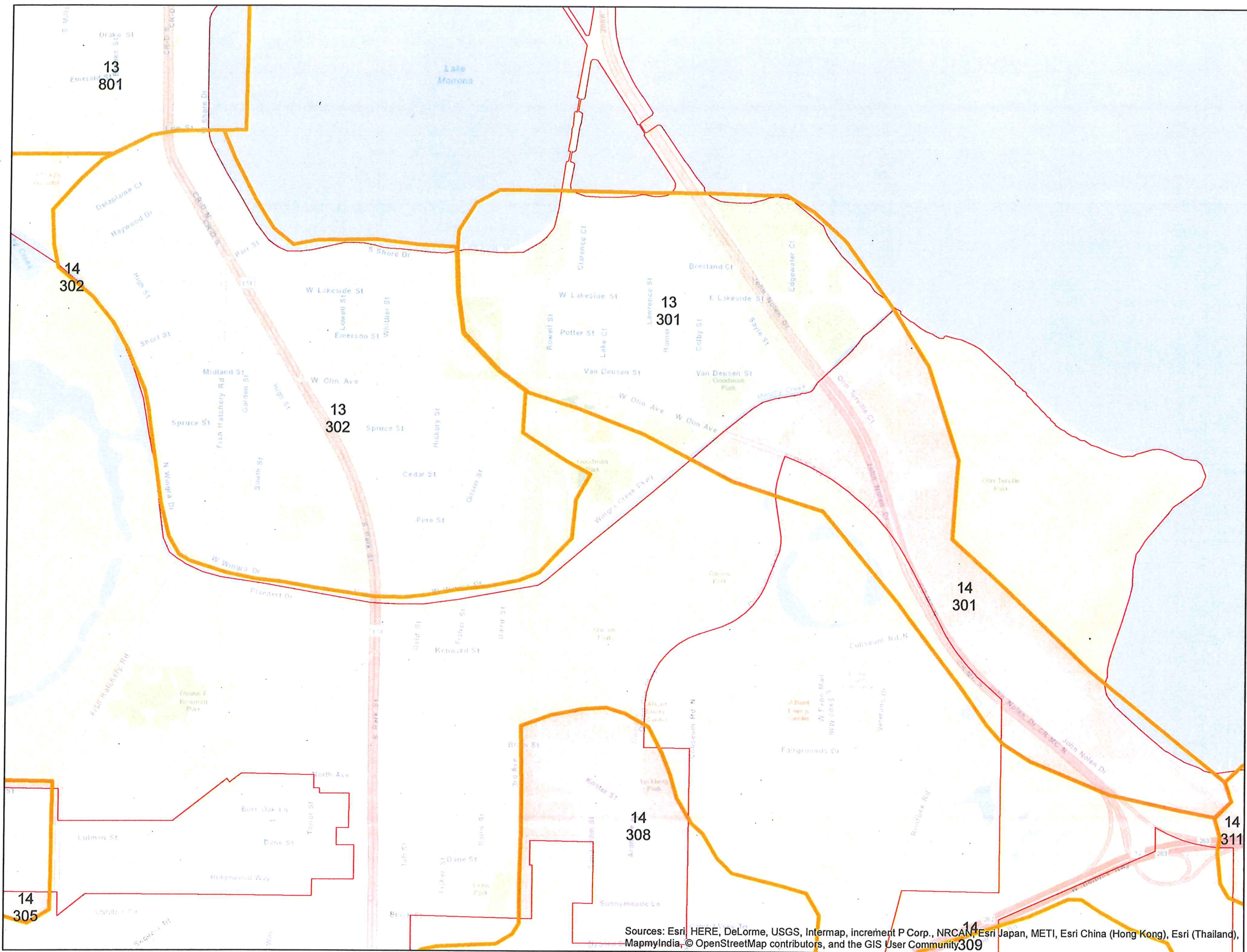


GIS Data / Mapping Disclaimers

Madison Gas and Electric Company ("MGE") is providing you access to its GIS mapping data ("Information"), in electronic format or print format, as a resource of general information for use "as-is." The Information provided is for reference purposes only and is not intended for subsequent use, in whole or in part, without the express written consent of MGE. The Information provided may contain inaccuracies or errors. Source data used for the Information may have been collected at different scales, times or definitions, resulting in inconsistencies among features represented together as part of this Information. MGE makes no representation regarding the accuracy, reliability, or completeness of the Information. The use of this Information is at your own risk.

By accessing this Information, you agree and acknowledge that receipt of the Information in no way releases you from following required and standard protocols in the course of normal business including but not limited to calling and relying upon Digger's Hotline.

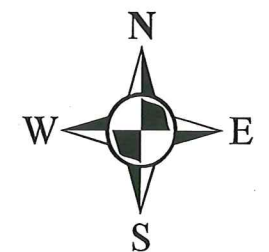
By using the Information you hereby release MGE, its officers, directors, employees and agents from any responsibility or liability associated with its use. In no event will MGE be liable for any damages whatsoever that may arise out of the use of the Information.





Alderman District MGE Trim Area Number

May 2017

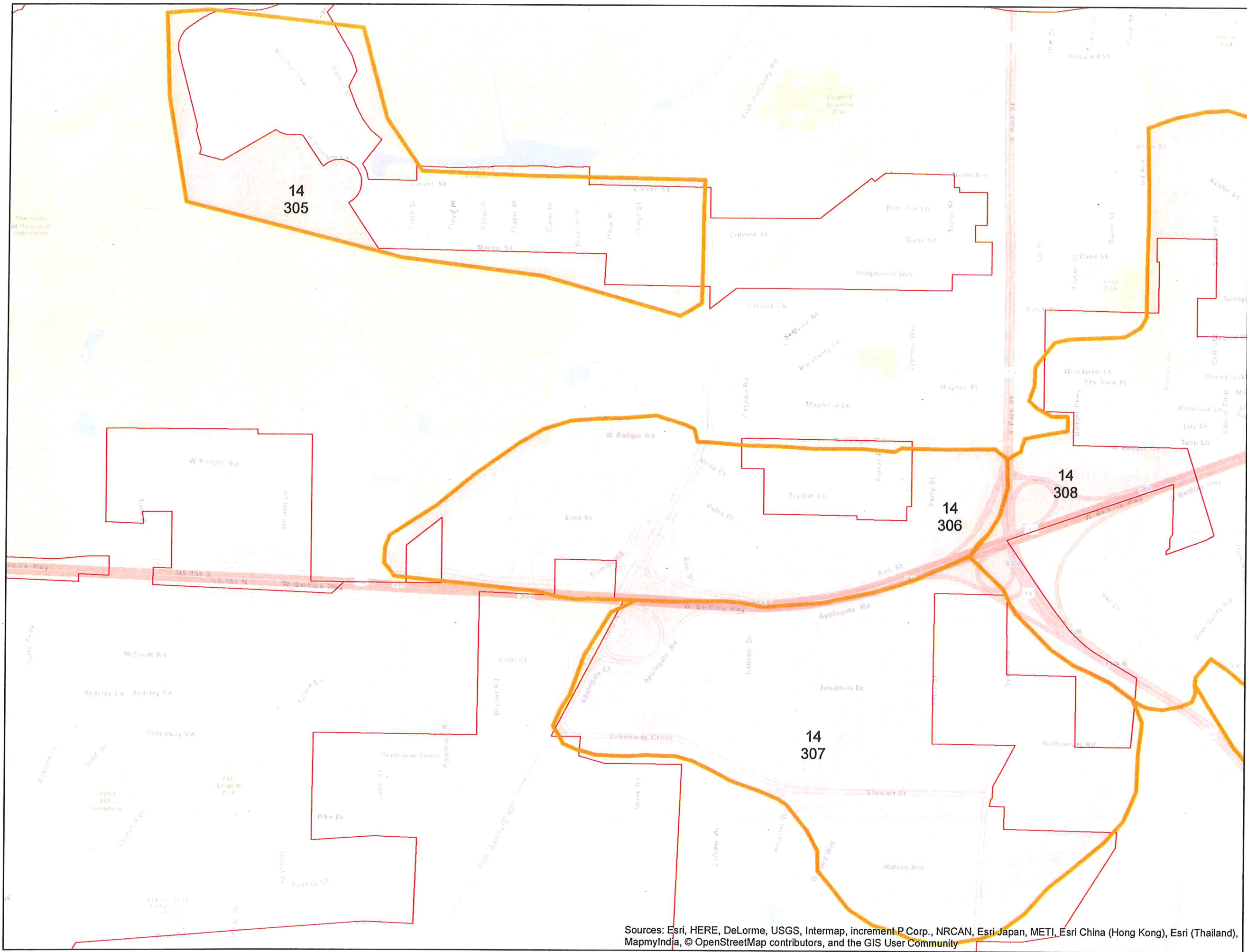


GIS Data / Mapping Disclaimers

Midwest Gas and Electric Company ("MGE") is providing you access to its GIS mapping data ("Information"), in electronic format or print format, as a resource of general information for use "as-is." The information provided is for reference purposes only and is not intended to be used for any other purpose. This information may not be copied, distributed, rented, or altered for subsequent use, in whole or in part, without the express written consent of MGE. The information provided may contain inaccuracies or errors. Source data used for the information may have been collected at different scales, times or definitions, resulting in inconsistencies among features represented together as part of this information. MGE makes no representation regarding the accuracy, reliability, or completeness of the information. The use of this information is at your own risk.

By accessing this information, you agree and acknowledge that receipt of the information in no way releases you from following required and standard protocols in the course of normal business including but not limited to calling and relying upon Digger's Hotline.

By using the information you hereby release MGE, its officers, directors, employees and agents from any responsibility or liability associated with its use. In no event will MGE be liable for any damages whatsoever that may arise out of the use of the information.

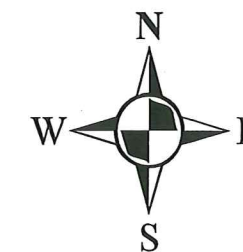


Sources: Esri, HERE, DeLorme, USGS, Intermap, increment P Corp., NRCAN, Esri Japan, METI, Esri China (Hong Kong), Esri (Thailand), MapmyIndia, © OpenStreetMap contributors, and the GIS User Community



Alderman District MGE Trim Area Number

May 2017

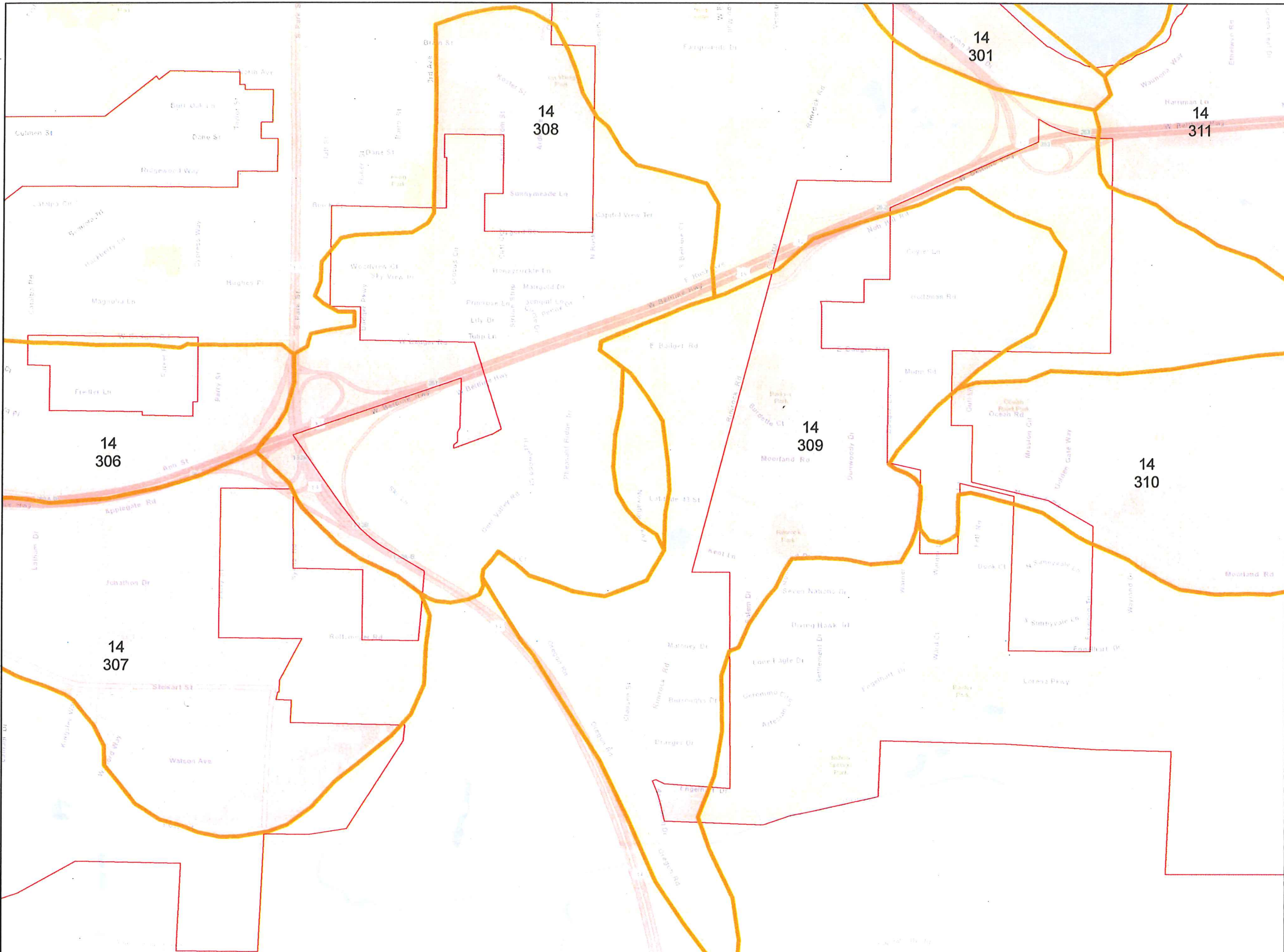


GIS Data / Mapping Disclaimers

Madison Gas and Electric Company ("MGE") is providing you access to its GIS mapping data ("Information"), in electronic format or print format, as a resource of general information for use "as-is." The information provided is for reference purposes only and is and shall remain the property of MGE. This information may not be copied, distributed, rented, or altered for subsequent use, in whole or in part, without the express written consent of MGE. The information provided may contain inaccuracies or errors. Source data used for the information may have been collected at different scales, times or definitions, resulting in inconsistencies among features represented together as part of this information. MGE makes no representation regarding the accuracy, reliability, or completeness of the information. The use of this information is at your own risk.

By accessing this information, you agree and acknowledge that receipt of the information in no way releases you from following required and standard protocols in the course of normal business including but not limited to calling and relying upon Digger's Hotline.

By using the information you hereby release MGE, its officers, directors, employees and agents from any responsibility or liability associated with its use. In no event will MGE be liable for any damages whatsoever that may arise out of the use of the information.



Sources: Esri, HERE, DeLorme, USGS, Intermap, increment P Corp., NRCAN, Esri Japan, METI, Esri China (Hong Kong), Esri (Thailand), MapmyIndia, © OpenStreetMap contributors, and the GIS User Community



Alderman District
MGE Trim Area Number

May 2017

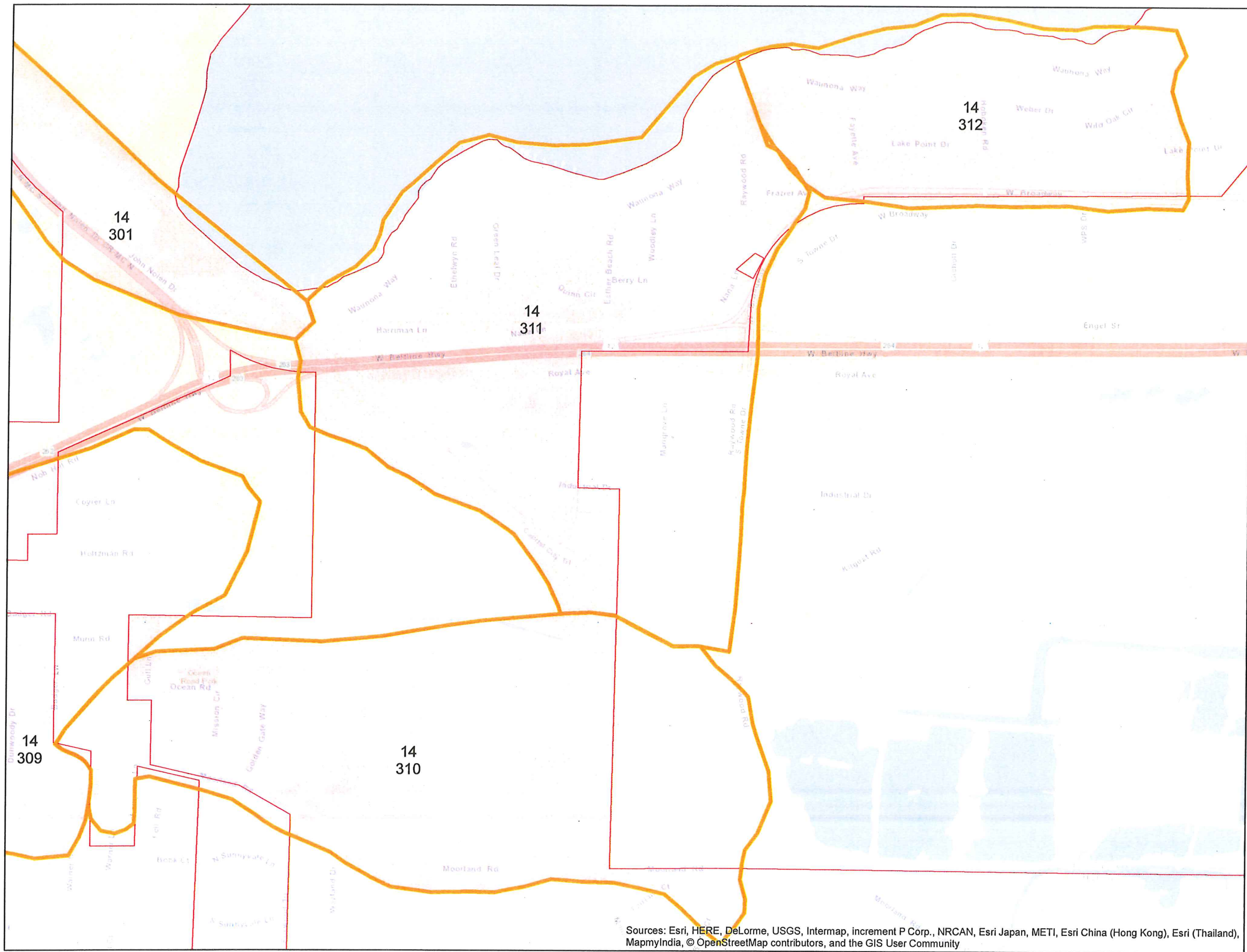


GIS Data / Mapping Disclaimers

Midcon Gas and Electric Company ("MGE") is providing you access to its GIS mapping data ("Information"), in electronic format or print format, as a resource of general information for use "as-is." The Information provided is for reference purposes only and is and shall remain the property of MGE. This Information may not be copied, distributed, rented, or altered for subsequent use, in whole or in part, without the express written consent of MGE. The Information provided may contain inaccuracies or errors. Source data used for the Information may have been collected at different scales, times or deflections, resulting in inconsistencies among features represented together as part of this Information. MGE makes no representation regarding the accuracy, reliability, or completeness of the Information. The use of this Information is at your own risk.

By accessing this Information, you agree and acknowledge that receipt of the Information in no way releases you from following required and standard protocols in the course of normal business including but not limited to calling and relying upon Digger's Hotline.

By using the information you hereby release MGE, its officers, directors, employees and agents from any responsibility or liability associated with its use. In no event will MGE be liable for any damages whatsoever that may arise out of the use of the Information.



Sources: Esri, HERE, DeLorme, USGS, Intermap, increment P Corp., NRCAN, Esri Japan, METI, Esri China (Hong Kong), Esri (Thailand), MapmyIndia, © OpenStreetMap contributors, and the GIS User Community



Alderman District MGE Trim Area Number

May 2017

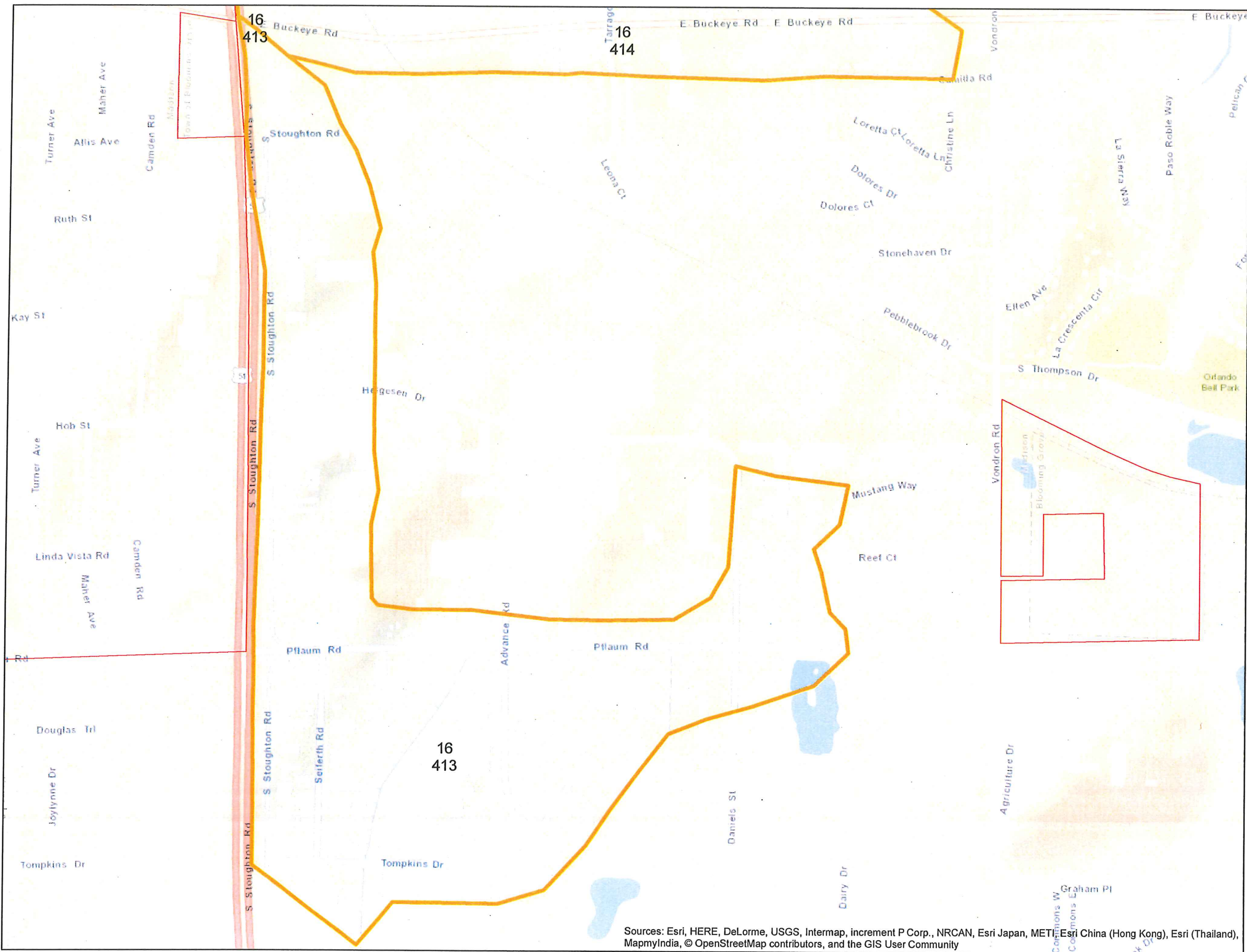


GIS Data / Mapping Disclaimers

Madison Gas and Electric Company ("MGE") is providing you access to its GIS mapping data ("Information"), in electronic format or print format, as a resource of general information for use "as-is." The information provided is for reference purposes only and shall remain the property of MGE. This information may not be copied, distributed, rented, or altered for subsequent use, in whole or in part, without the express written consent of MGE. The information provided may contain inaccuracies or errors. Source data used for the information may have been collected at different scales, times or definitions, resulting in inconsistencies among features represented together as part of this information. MGE makes no representation regarding the accuracy, reliability, or completeness of the information. The use of this information is at your own risk.

By accessing this information, you agree and acknowledge that receipt of the information in no way releases you from following required and standard protocols in the course of normal business including but not limited to calling and relying upon Digger's Hotline.

By using the information you hereby release MGE, its officers, directors, employees and agents from any responsibility or liability associated with its use. In no event will MGE be liable for any damages whatsoever that may arise out of the use of the information.

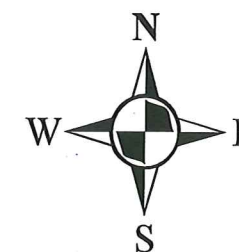


Sources: Esri, HERE, DeLorme, USGS, Intermap, increment P Corp., NRCAN, Esri Japan, METI, Esri China (Hong Kong), Esri (Thailand), MapmyIndia, © OpenStreetMap contributors, and the GIS User Community



Alderman District MGE Trim Area Number

May 2017

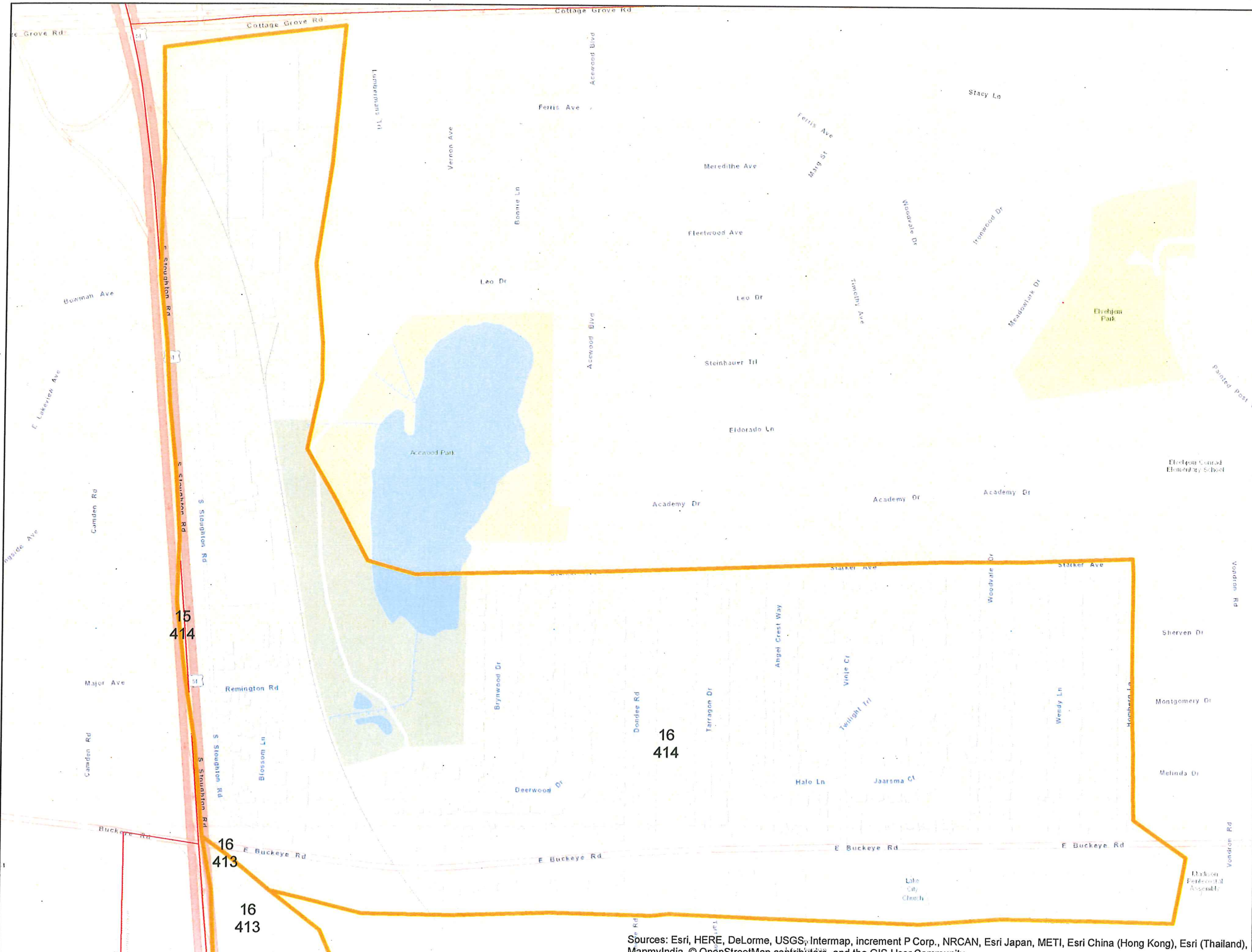


GIS Data / Mapping Disclaimers

Madison Gas and Electric Company ("MGE") is providing you access to its GIS mapping data ("Information"), in electronic format or print format, as a resource of general information for use "as-is." The information provided is for reference purposes only and is and shall remain the property of MGE. This information may not be copied, distributed, rented, or altered for subsequent use, in whole or in part, without the express written consent of MGE. The information provided may contain inaccuracies or errors. Source data used for the information may have been collected at different scales, times or definitions, resulting in inconsistencies among features represented together as part of this information. MGE makes no representation regarding the accuracy, reliability, or completeness of the information. The use of this information is at your own risk.

By accessing this information, you agree and acknowledge that receipt of the information in no way releases you from following required and standard protocols in the course of normal business including but not limited to calling and relying upon Digger's Hotline.

By using the information you hereby release MGE, its officers, directors, employees and agents from any responsibility or liability associated with its use. In no event will MGE be liable for any damages whatsoever that may arise out of the use of the information.



Sources: Esri, HERE, DeLorme, USGS, Intermap, increment P Corp., NRCAN, Esri Japan, METI, Esri China (Hong Kong), Esri (Thailand), MapmyIndia, © OpenStreetMap contributors, and the GIS User Community



Alderman District MGE Trim Area Number

May 2017



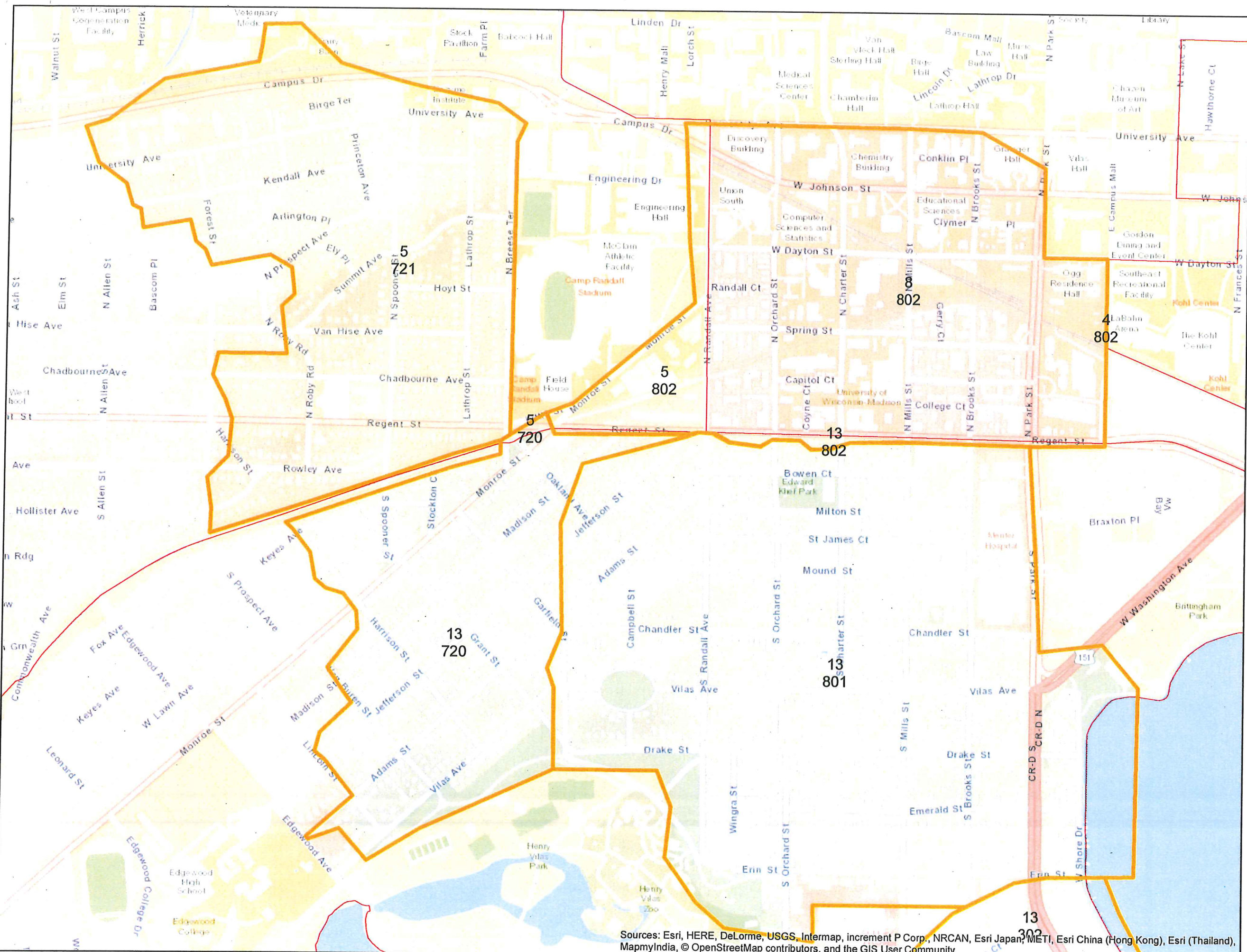
GIS Data / Mapping Disclaimers

Madison Gas and Electric Company ("MGE") is providing you access to its GIS mapping data ("Information"), in electronic format or print format, as a resource of general information for use "as-is." The information provided is for reference purposes only and its use shall remain the property of MGE. This information may not be copied, distributed, rented, or altered for subsequent use, in whole or in part, without the express written consent of MGE. The information provided may contain inaccuracies or errors. Source data used for the information may have been collected at different scales, times or definitions, resulting in inconsistencies among features represented together as part of this information. MGE makes no representation regarding the accuracy, reliability, or completeness of the information. The use of this information is at your own risk.

By accessing this information, you agree and acknowledge that receipt of the information in no way releases you from following required and standard protocols in the course of normal business including but not limited to calling and relying upon Digger's Hotline.

By using the information you hereby release MGE, its officers, directors, employees and agents from any responsibility or liability associated with its use. In no event will MGE be liable for any damages whatsoever that may arise out of the use of the information.

Sources: Esri, HERE, DeLorme, USGS, Intermap, increment P Corp., NRCAN, Esri Japan, METI, Esri China (Hong Kong), Esri (Thailand), MapmyIndia, © OpenStreetMap contributors, and the GIS User Community





Alderman District MGE Trim Area Number

May 2017

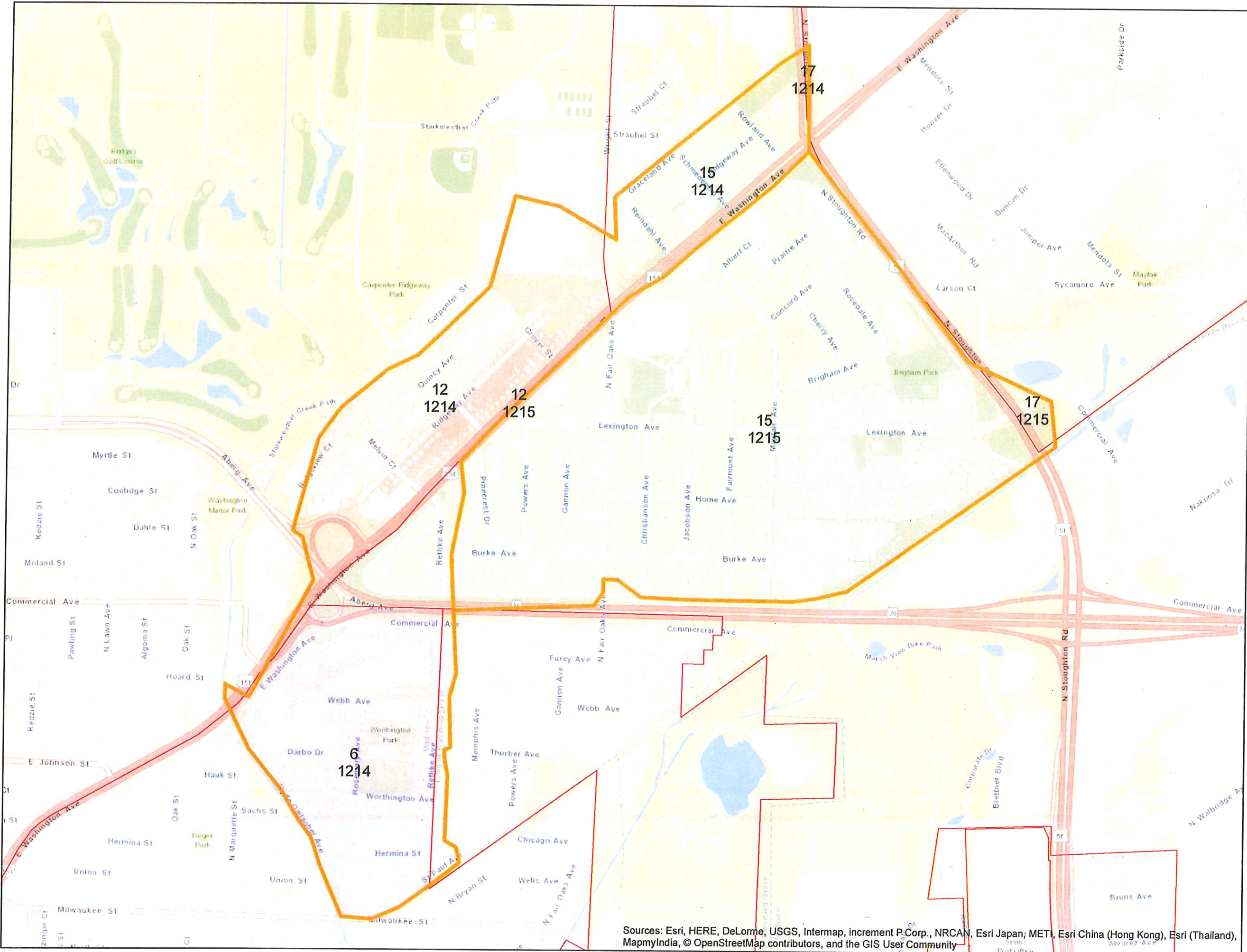


GIS Data / Mapping Disclaimers

Madison Gas and Electric Company ("MGE") is providing you access to its GIS mapping data ("Information"), in electronic format or print format, as a resource of general information for use "as-is." The information provided is for reference purposes only and is and shall remain the property of MGE. This information may not be copied, distributed, rented, or altered for subsequent use, in whole or in part, without the express written consent of MGE. The Information provided may contain inaccuracies or errors. Source data used for the Information may have been collected at different scales, times or deflations, resulting in inconsistencies among features represented together as part of this Information. MGE makes no representation regarding the accuracy, reliability, or completeness of the Information. The use of this Information is at your own risk.

By accessing this Information, you agree and acknowledge that receipt of the Information in no way releases you from following required and standard protocols in the course of normal business including but not limited to calling and relying upon Digger's Hotline.

By using the Information you hereby release MGE, its officers, directors, employees and agents from any responsibility or liability associated with its use. In no event will MGE be liable for any damages whatsoever that may arise out of the use of the Information.

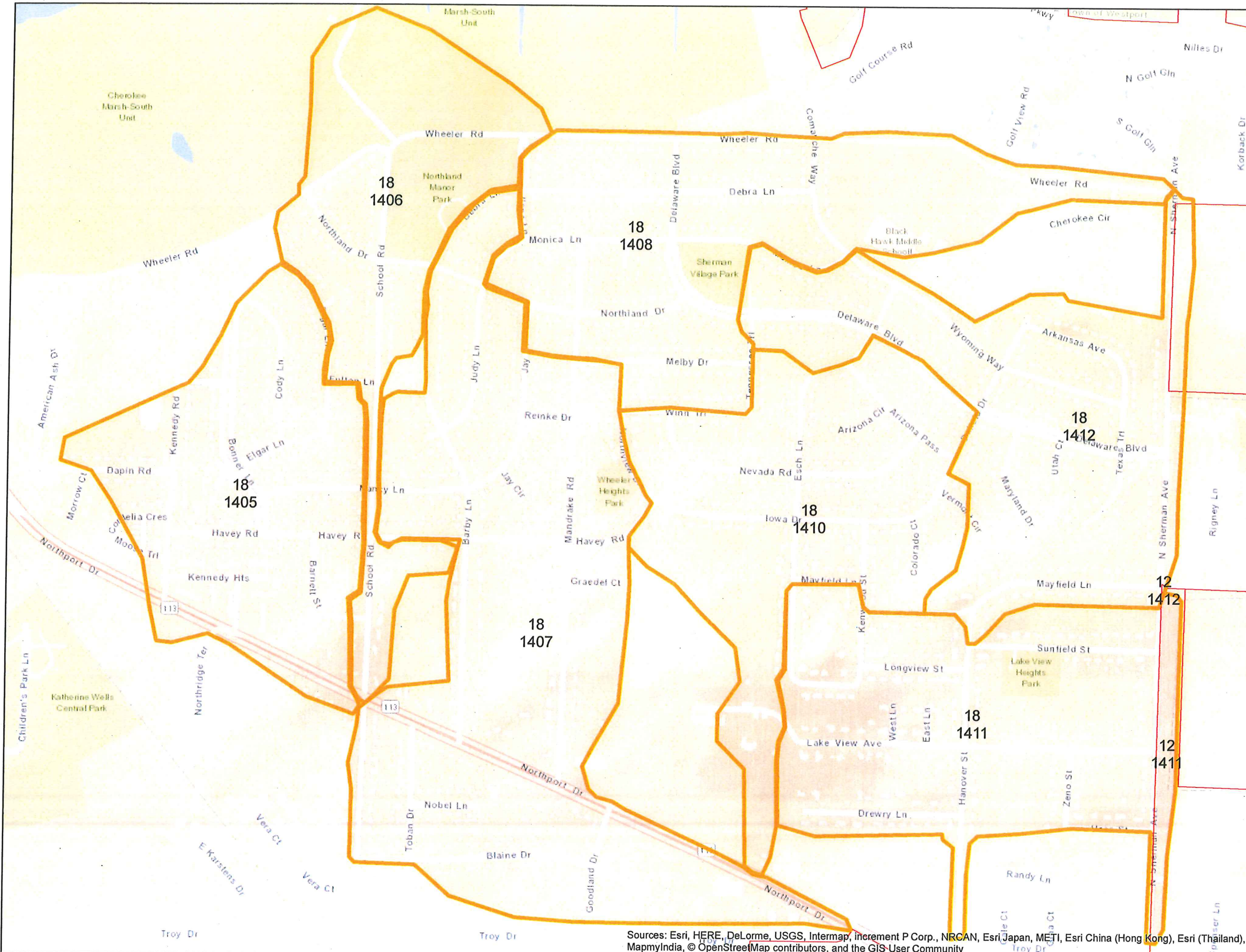


Sources: Esri, HERE, DeLorme, USGS, Intermap, increment P, Corp., NRCAN, Esri Japan, METI, Esri China (Hong Kong), Esri (Thailand), MapmyIndia, © OpenStreetMap contributors, and the GIS User Community



Alderman District MGE Trim Area Number

May 2017



GIS Data / Mapping Disclaimers

Madison Gas and Electric Company ("MGE") is providing you access to its GIS mapping data ("Information"), in electronic format or print format, as a resource of general information for use "as-is." The Information provided is for reference purposes only and is and shall remain the property of MGE. This Information may not be copied, distributed, rented, or altered for subsequent use, in whole or in part, without the express written consent of MGE. The Information provided may contain inaccuracies or errors. Source data used for the Information may have been collected at different scales, times or definitions, resulting in inconsistencies among features represented together as part of this Information. MGE makes no representation regarding the accuracy, reliability, or completeness of the Information. The use of this Information is at your own risk.

By accessing this Information, you agree and acknowledge that receipt of the Information in no way releases you from following required and standard protocols in the course of normal business including but not limited to calling and relying upon Digger's Hotline.

By using the Information you hereby release MGE, its officers, directors, employees and agents from any responsibility or liability associated with its use. In no event will MGE be liable for any damages whatsoever that may arise out of the use of the Information.

Sources: Esri, HERE, DeLorme, USGS, Intermap, increment P Corp., NRCAN, Esri Japan, METI, Esri China (Hong Kong), Esri (Thailand), MapmyIndia, © OpenStreetMap contributors, and the GIS User Community