

DANE COUNTY JAIL CONSOLIDATION

Urban Design Commission Initial Final // December 14, 2022











TWO WAY TRAFFIC AHEAD



S Henry St

Monona Terrace Community and...





W DOTY STREET

S HAMILTON STREET

S CARROLL STREET

W WILSON STREET



W DOTY STREET

S HAMILTON STREET

COURTHOUSE

PUBLIC SAFETY BUILDING

SOUTH TOWER ADDITION

S CARROLL STREET

CITY/COUNTY BUILDING

W WILSON STREET























NO
STOPPING
STANDING
PARKING

R R

EXEMPT
NO
TRAIL
SIGN

Exterior Materials



Exterior Materials



Brushed Finish

40%

Smooth Finish

60%

Smooth Finish

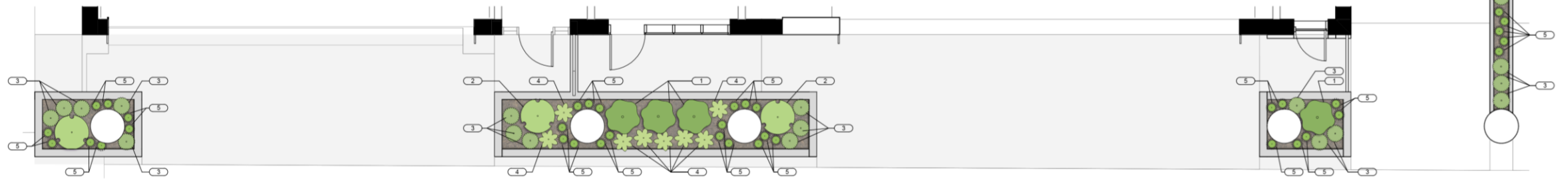
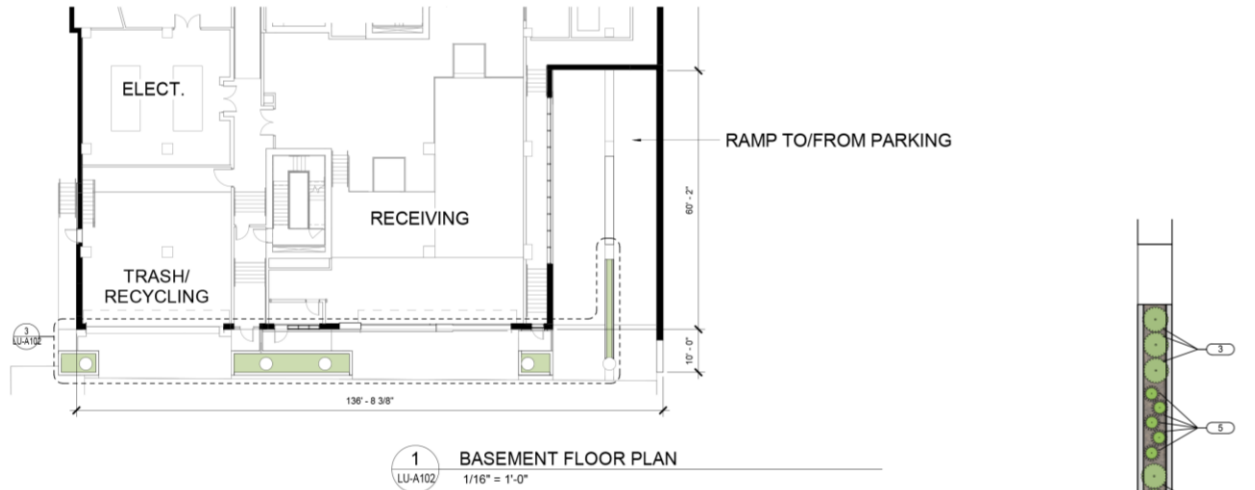
(Accent Bands)

Exterior Materials



Translucent Glass: Solarban 70 with Satinlite-1 on 3rd surface

PLANT SCHEDULE	
TAG NUMBER	BOTANICAL/COMMON NAME
Ferns	
1	<i>Osmunda cinnamomea</i> / Cinnamon Fern
Herbaceous Perennials	
2	<i>Hosta x 'August Moon'</i> / August Moon Hosta
3	<i>Geranium maculatum</i> / Spotted Geranium Geranium
4	<i>Amsonia tabernaemontana 'Blue Ice'</i> / Blue Ice Blue Star
Ornamental Grasses	
5	<i>Carex pensylvanica</i> / Pennsylvania Sedge



1



2



3



4



5

Elevation from W. Doty Street



Elevation from Carroll Street



Elevation from W. Wilson Street



Elevation from Dane County Courthouse

