



**MADISON
PUBLIC SCHOOLS
FOUNDATION**

Overview of MPSF

May 8th, 2024



Our Mission, Our Work



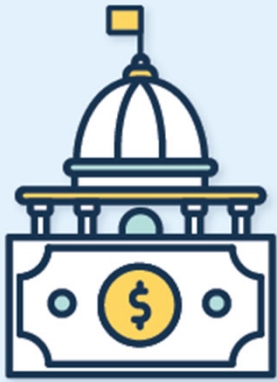
The Madison Public Schools Foundation is committed to supporting the education of every child by:

- Raising funds
- Developing community partnerships
- Advocating for Madison's public schools

Our vision: Supported by the Foundation, Madison will have excellent, well-funded public schools in which learning is celebrated and all students graduate ready for college, career, and community



Why we're needed – bridging the funding gap



State Funding
Creates Budget Pinch
Points for MMSD

\$21M revenue gap due to not keeping pace with inflation

\$66.4M gap to pay for mandated special education services

4K kindergarten students are funded at 50% of the per pupil aid level

And many others!



School Endowment Funds

- Launched in 2003
- Nearly \$1.2M has gone directly to MMSSD schools over the past 20 years
- \$124,000 distributed for the 2023-24 school year
- Some projects from the 2022-23 school year include:
 - **Gillespie Middle School** supported their Student Regulation Room – a safe & friendly space for students who benefit from time away from the classroom.
 - **Lowell Elementary** purchased a new sound system that has been used extensively for assemblies, music concerts, & community events. They also purchased plastic bins to store & organize all the materials from the new literacy curriculum.



Adopt-a-School Program

A dynamic bridge between schools & the community. In 2023, this equated to \$565,068 in total support:

- \$161,896 in direct financial contributions
- \$213,043 in-kind and/or material contributions
- \$190,147 value of planning/volunteer hours



Teacher Support Network

- Teacher Support Network online store:
 - We provide a \$190,000 equity-based budget across 52 schools
 - Available 24/7 throughout the school year
 - Responsive – new items added per teacher feedback
 - Deliveries typically made in 24 hours
- Play Every Day initiative invested \$150,000 in getting kids active
- \$50,000 worth of Lands' End winter outerwear



Advocacy

Local Efforts

- Feature BoE elections & promote voting
- Communicate & educate on issues in our own backyard

Statewide Outreach

- Track state policy developments related to public K12 education
- Partner with statewide organizations to highlight public education issues & encourage discussion around those issues
- Build relationships with business & industry influencers who are willing to champion K12 investment

National Monitoring

- Understand any developing trends within public education
- Stay connected with local Congressional representatives & their staff



Economic Impact Report



Generating the Future

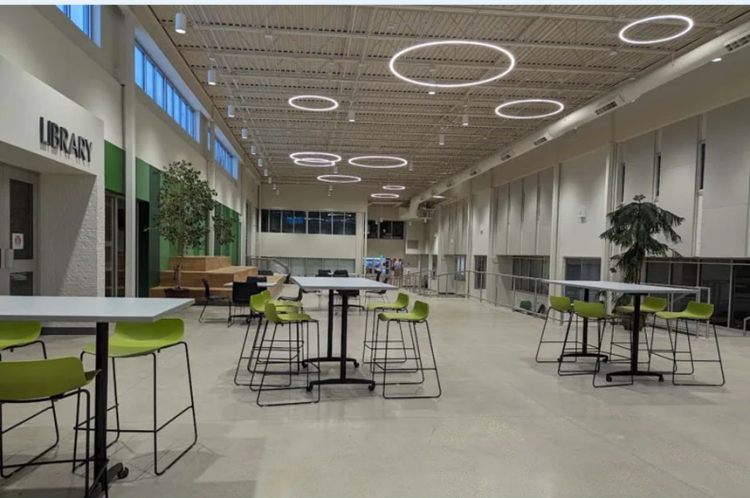
Understanding the Economic and
Fiscal Impact of Madison Metropolitan
School District



**MADISON
PUBLIC SCHOOLS
FOUNDATION**

This study was commissioned by Schools Make Madison Advocates, the 501c4 affiliate of the Madison Public Schools Foundation, and conducted by the University of Wisconsin Whitewater's Fiscal and Economic Research Center.

2020 Referenda Campaign



\$350M facilities referendum work is visible across Madison:

- New buildings for Southside Elementary & Capital High
- Major renovations at the four comprehensive high schools

Operating referendum has allowed MMSD to continue strategic equity projects:

- Invest in expanding & continuing 4K programming in 27 schools
- Implement school-based health centers to address concerns interfering with learning



2024 Priorities

- Preparation for potential 2024 MMUSD referenda package
- Engaging in strategic board expansion, with new ex officio seats representing:
 - City of Madison
 - Downtown Madison, Inc.
 - Greater Madison Chamber of Commerce
 - Madison College





Questions?

