

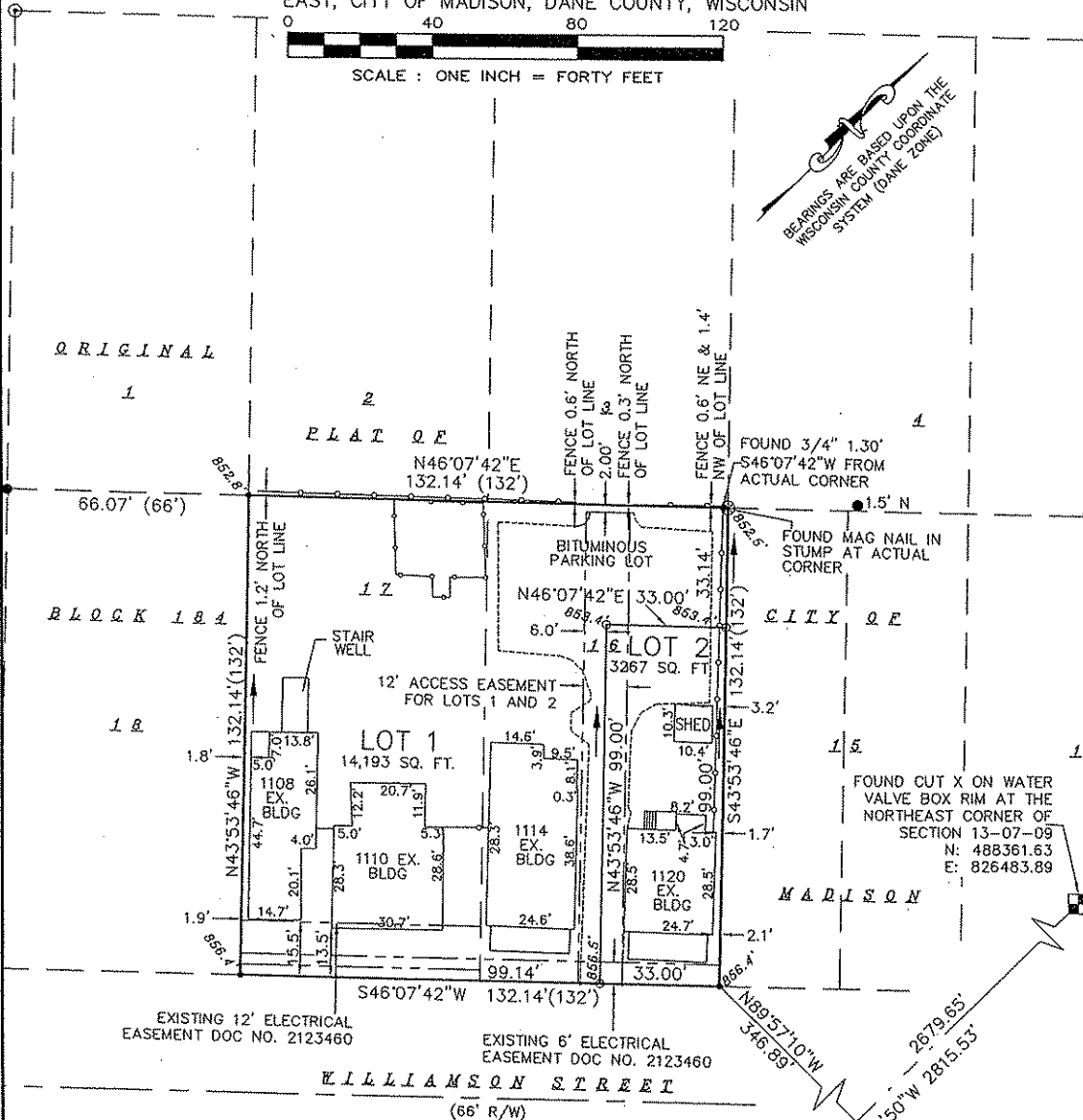
# CERTIFIED SURVEY MAP NO. \_\_\_\_\_

LOTS 16 AND 17, BLOCK 184, ORIGINAL PLAT OF MADISON, AS RECORDED IN VOLUME A OF PLATS, ON PAGE 3, AS DOCUMENT NUMBER 605063, DANE COUNTY REGISTRY, AKA FARWELLS REPLAT, LOCATED IN THE NORTHEAST QUARTER OF SECTION 13, TOWNSHIP 07 NORTH, RANGE 09 EAST, CITY OF MADISON, DANE COUNTY, WISCONSIN



SCALE : ONE INCH = FORTY FEET

BEARINGS ARE BASED UPON THE WISCONSIN COUNTY COORDINATE SYSTEM (DANE ZONE)



SURVEYED FOR :  
COMMON WEALTH DEVELOPMENT  
1501 WILLIAMSON STREET  
MADISON, WI 53703

SURVEYED BY :

**Burse**  
surveying & engineering inc

1400 E. Washington Ave, Suite 15B  
Madison, WI 53703 608.250.9263  
Fax: 608.250.9266  
email: burse@chorus.net  
www.bursesurveyengr.com

Date: January 27, 2009

Plot View: BSE1257 sht1

\\BSE1256\CSM\CSBSE1256.DWG

FOUND BRASS CAP MONUMENT AT THE EAST QUARTER CORNER OF SECTION 13-07-09  
N: 485,546.10  
E: 826,481.56

