



# University of Wisconsin Chabad Renovation & Addition

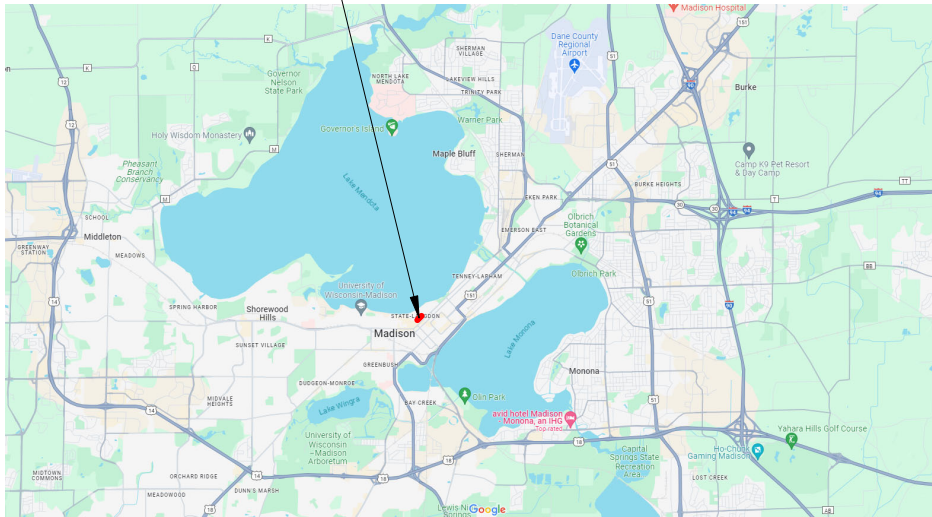
ASSEMBLAGE ARCHITECTS

December 18th, 2023



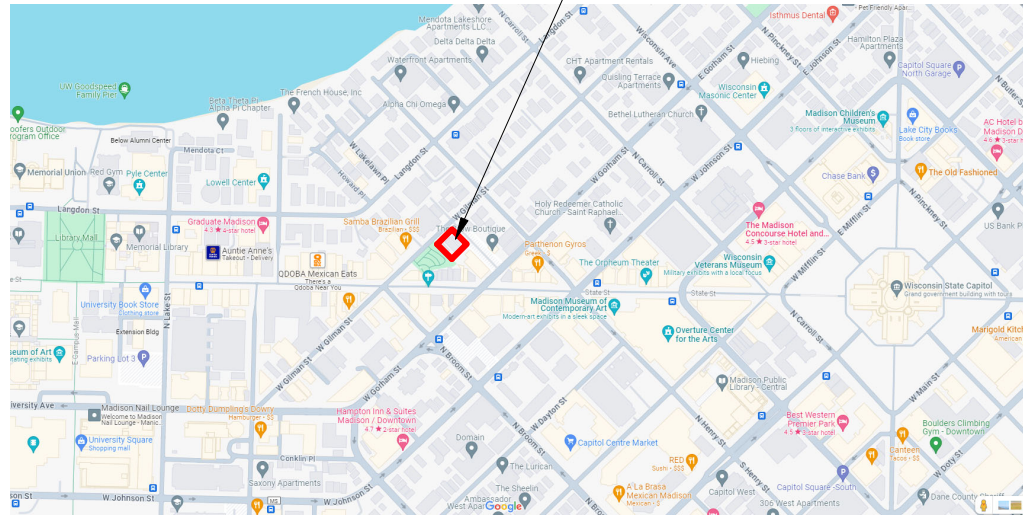
LOCATOR MAPS

PROPERTY LOCATION:  
223-225 W. GILMAN ST.  
MADISON, WI 53703



MAP OF MADISON, WI

PROPERTY LOCATION:  
223-225 W. GILMAN ST.  
MADISON, WI 53703



MAP OF DOWNTOWN MADISON

EXISTING CONTEXT IMAGES



LETTER OF WRITTEN INTENT

Dear Members on the Urban Design Commission,

The growing population of Jewish students at the University of Wisconsin underscores the necessity for an expanded Chabad building. This addition will not only accommodate the increasing demand for Chabad's programs but also provide a more functional and versatile space for various activities and events for students on campus. In addition, inclusion of student housing in the design will help the city of Madison meet the rising demand for student housing near campus.

The proposed new addition will be located adjacent to the existing historical building and a recent addition built back in 2017 (shown below). The proposed addition will preserve the historic façade and pickup on existing styles of the 2017 addition to create a harmonious and aesthetically pleasing overall façade. The columns, strategically placed along the street facing façade, serve as a unifying element, echoing the timeless elegance of the original addition. Not only are the two additions similar in design but, they also share similar materials further binding the additions into one.

I am confident that the proposed architectural enhancements will facilitate the organization's mission to foster inclusivity, cultural awareness, and community engagement. The design aims to create an environment that supports the diverse needs of the Chabad organization and Jewish student population, as well as, enhance the overall student campus experience.

Thank you for considering our project.

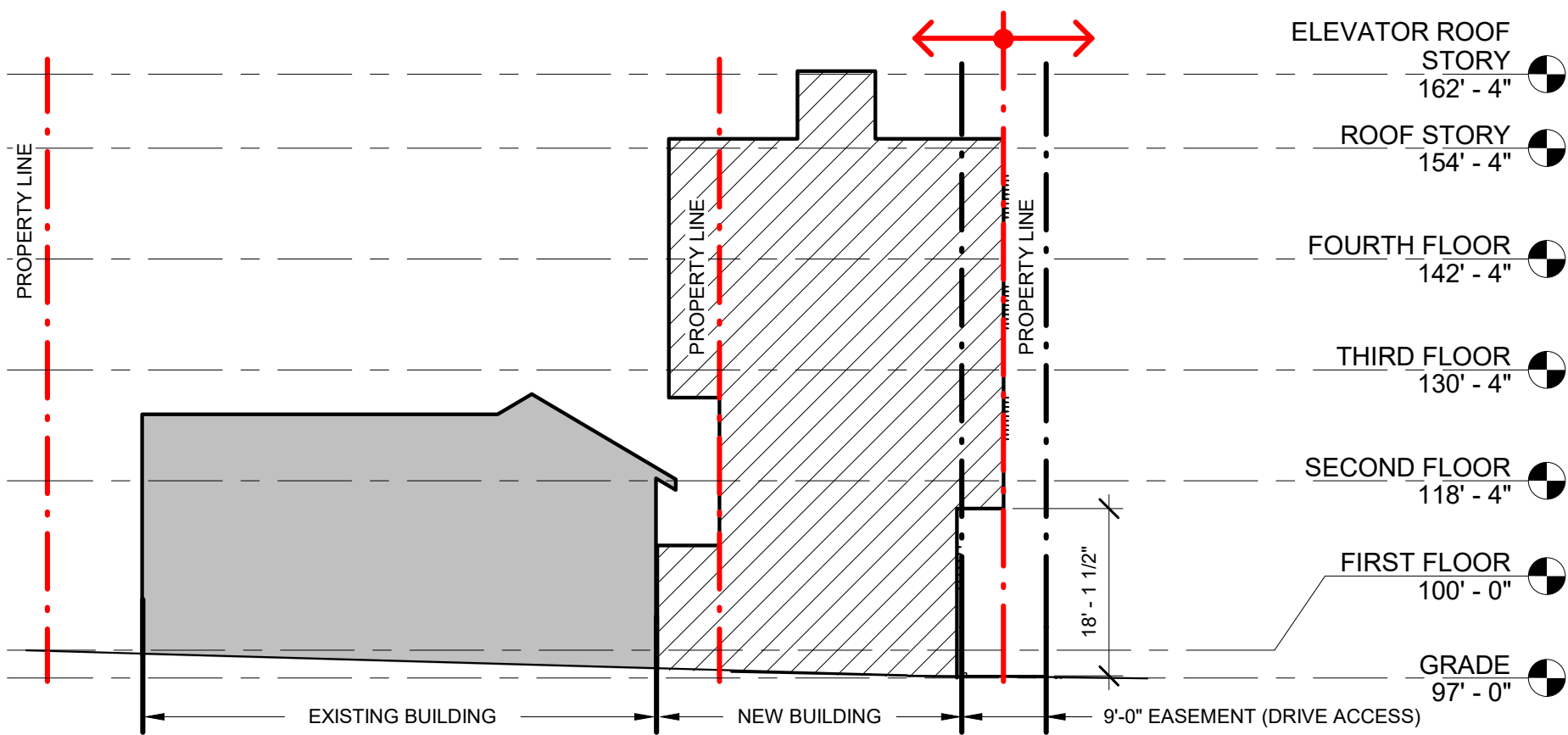
Sincerely,  
Hamid Noughani

University of Wisconsin Chabad Renovation & Addition

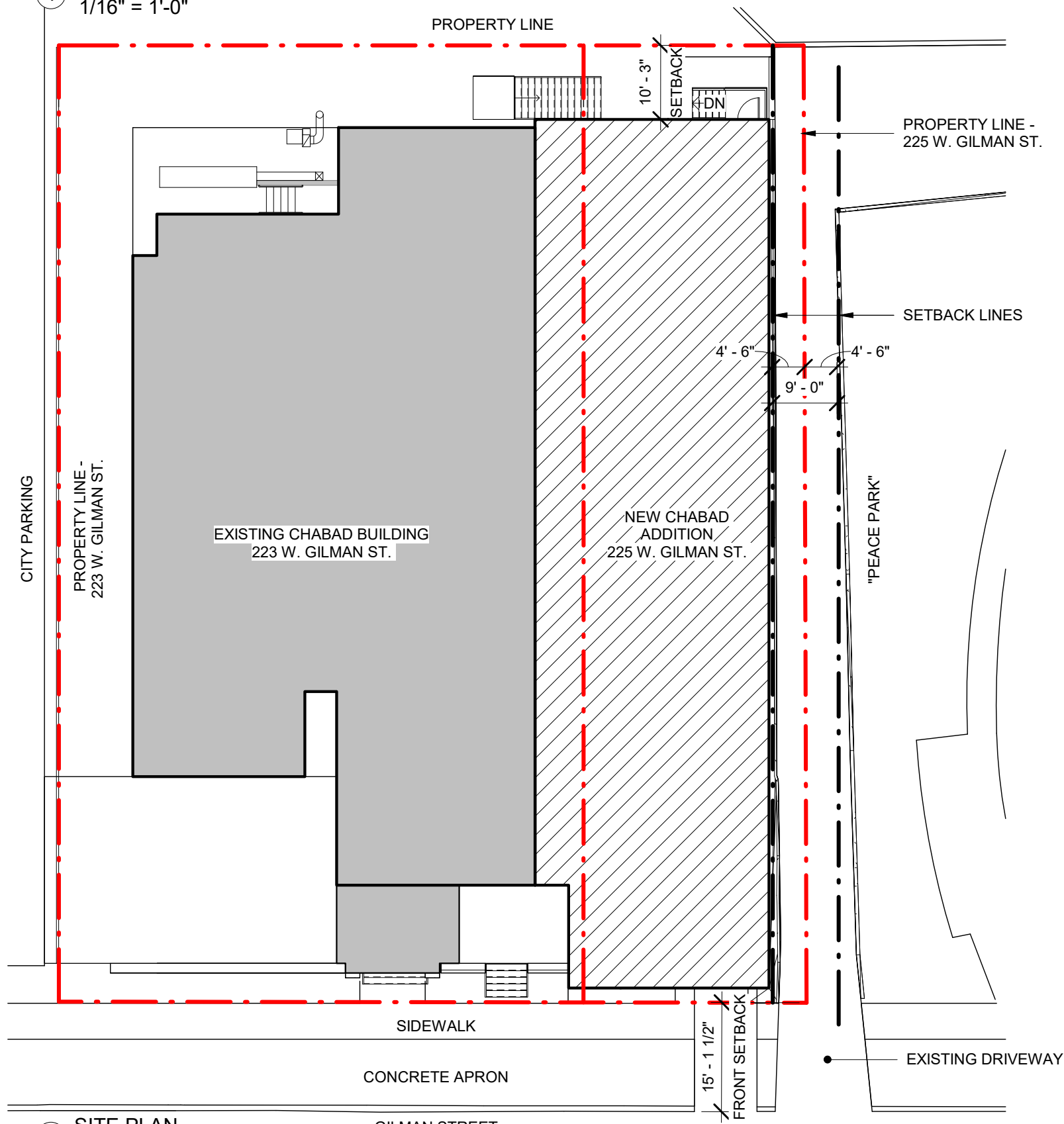
ASSEMBLAGE ARCHITECTS

December 18th, 2023

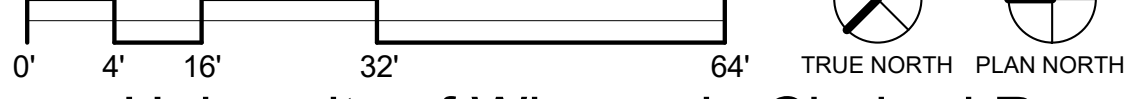




1 BUILDING SECTION  
1/16" = 1'-0"



2 SITE PLAN  
1/16" = 1'-0"

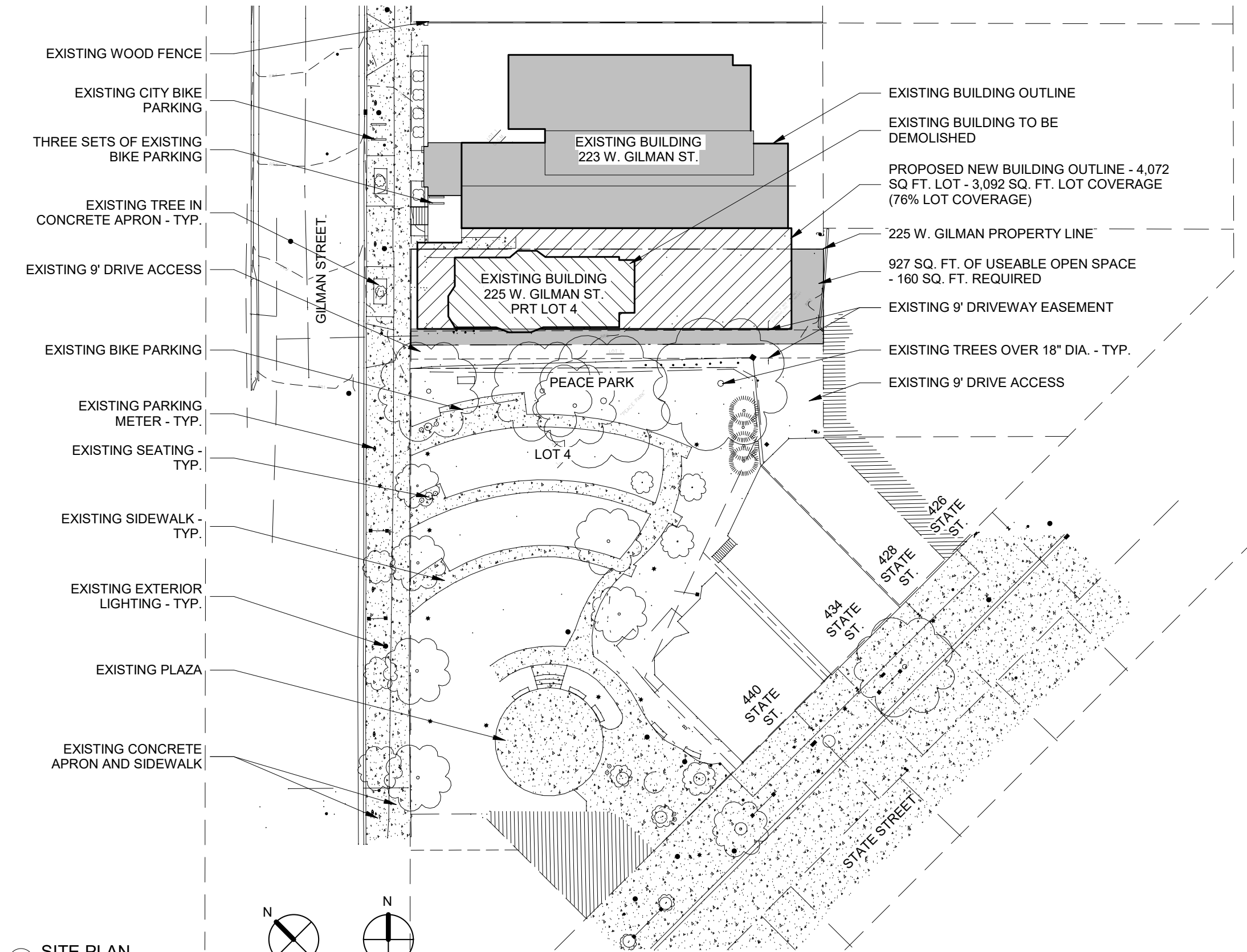


# University of Wisconsin Chabad Renovation & Addition

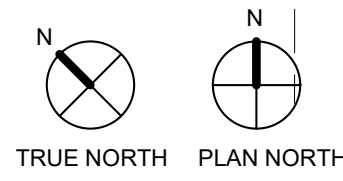
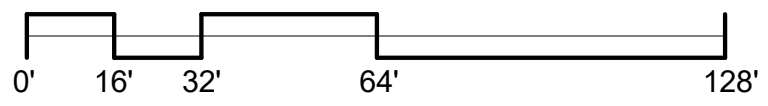
ASSEMBLAGE ARCHITECTS

December 18th, 2023





① SITE PLAN  
1/32" = 1'-0"

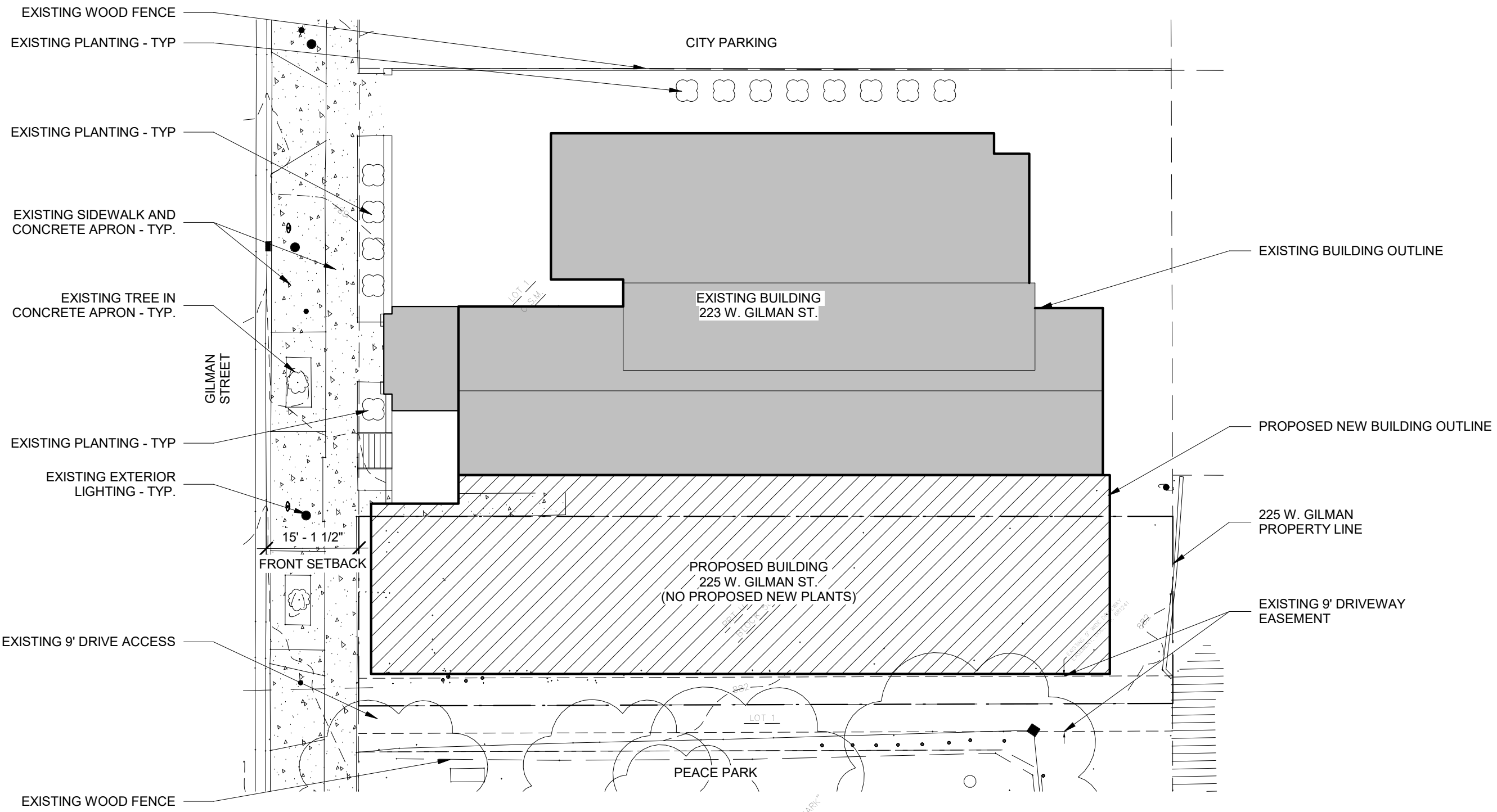


# University of Wisconsin Chabad Renovation & Addition

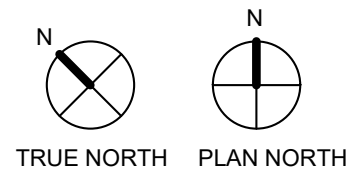
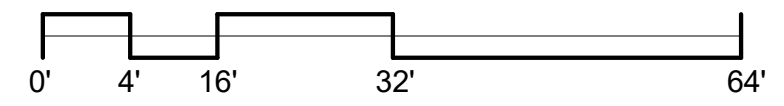
ASSEMBLAGE ARCHITECTS

December 18th, 2023





1 LANDSCAPE PLAN  
1/16" = 1'-0"

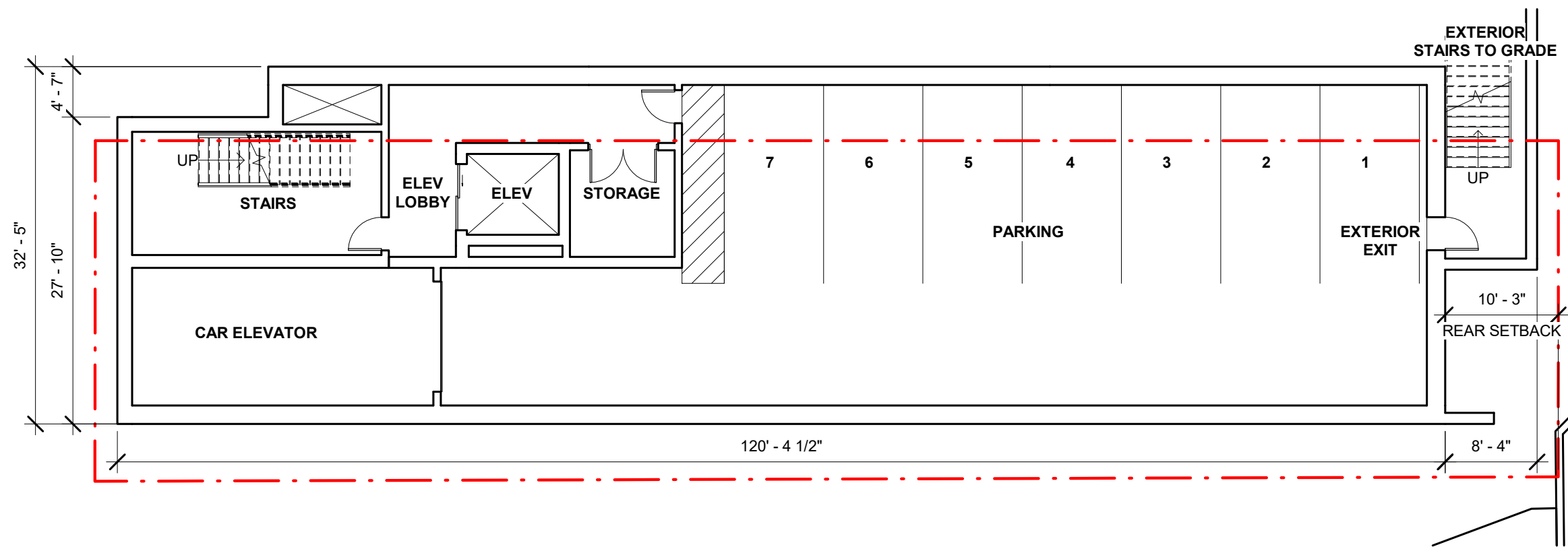


# University of Wisconsin Chabad Renovation & Addition

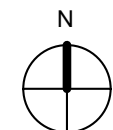
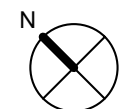
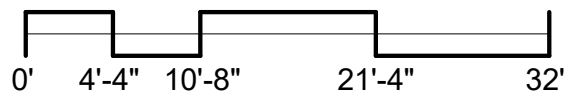
ASSEMBLAGE ARCHITECTS

December 18th, 2023





1 BASEMENT FLOOR PLAN  
 $3/32" = 1'-0"$



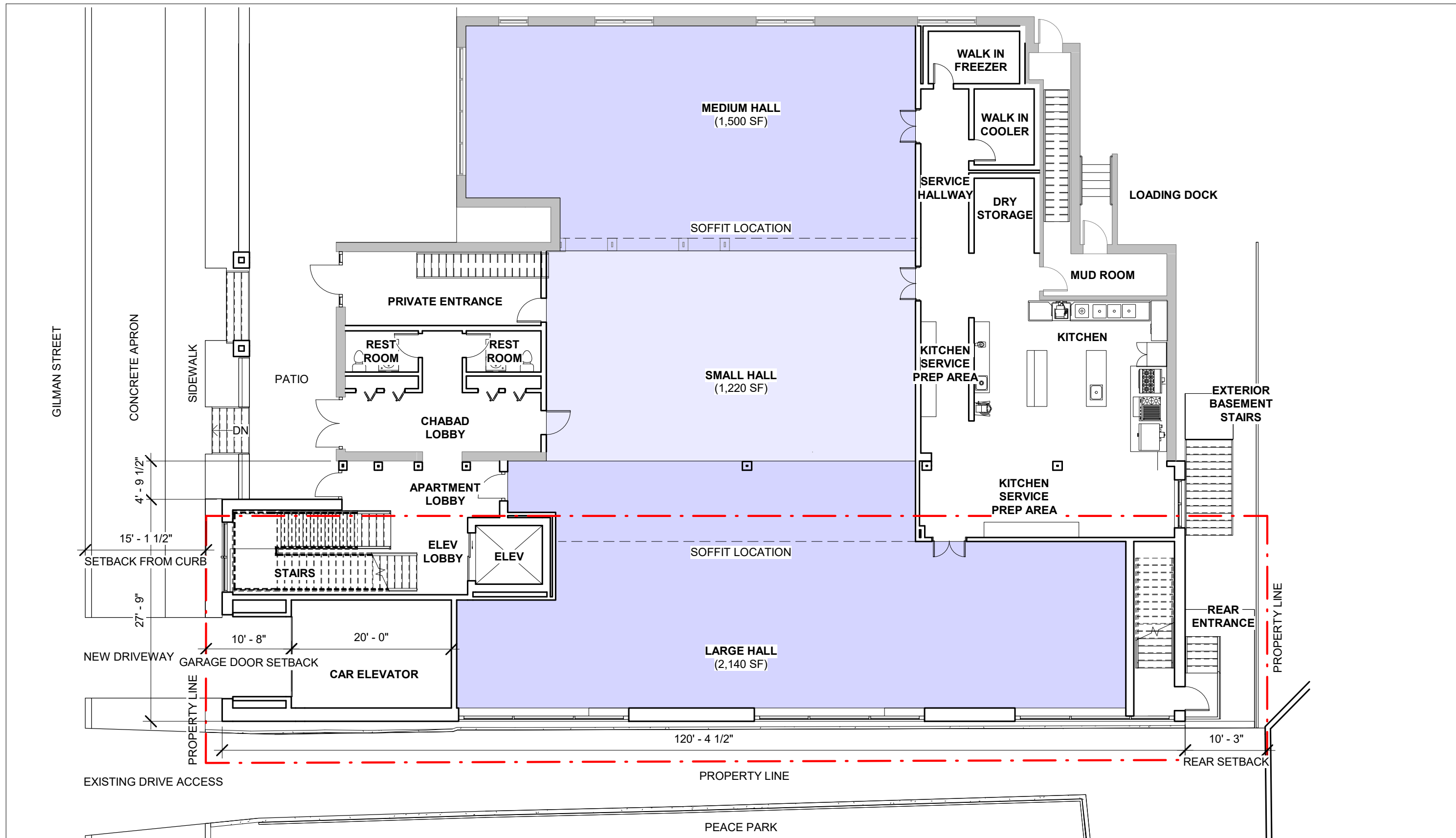
TRUE NORTH PLAN NORTH

# University of Wisconsin Chabad Renovation & Addition

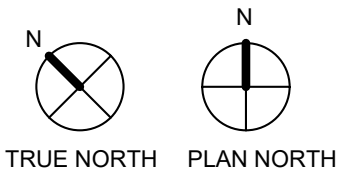
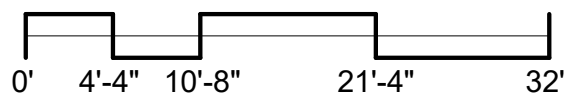
ASSEMBLAGE ARCHITECTS

December 18th, 2023





1 FIRST FLOOR PLAN  
3/32" = 1'-0"

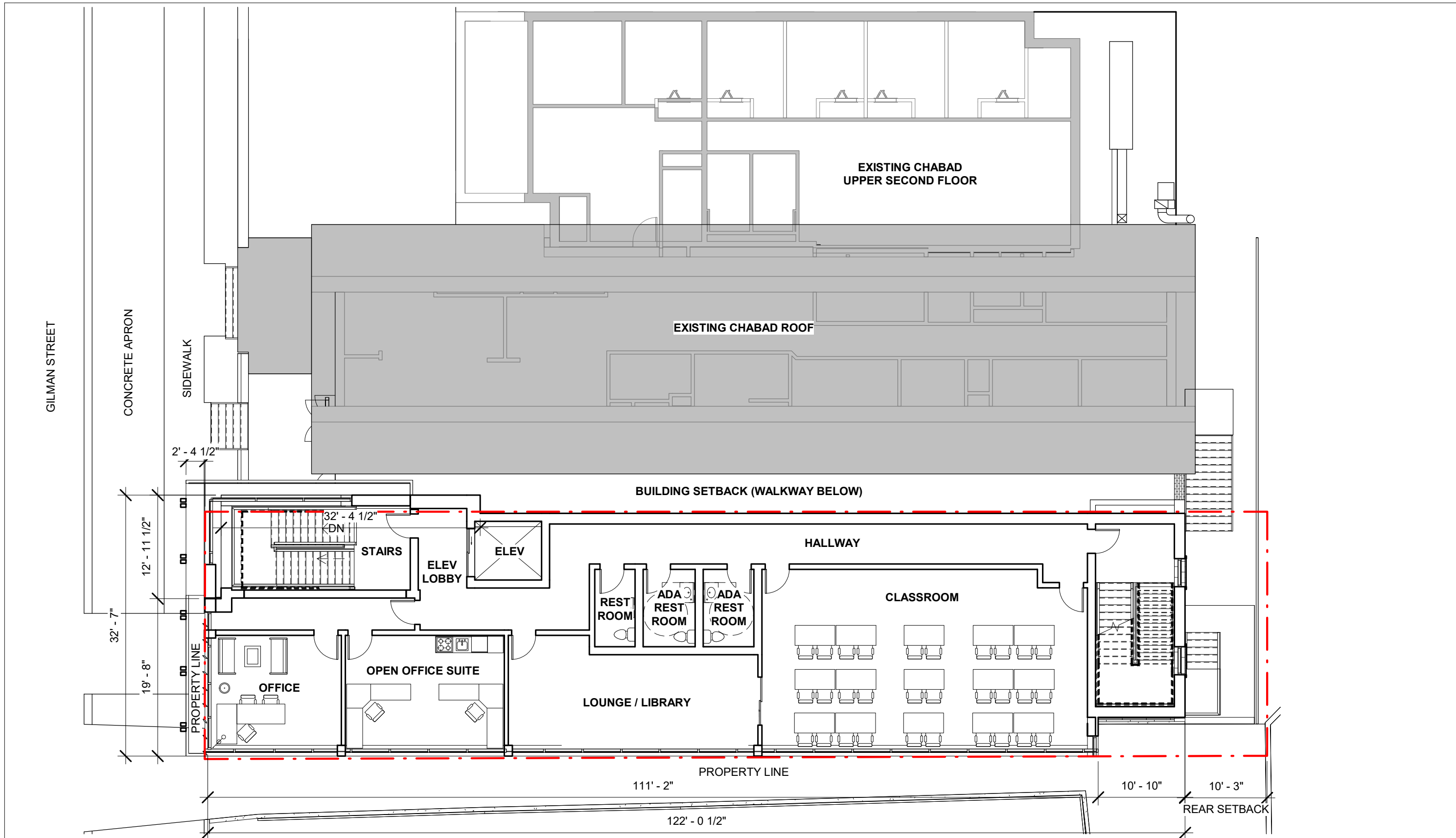


# University of Wisconsin Chabad Renovation & Addition

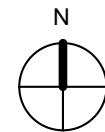
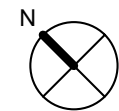
ASSEMBLAGE ARCHITECTS

December 18th, 2023





① SECOND FLOOR PLAN  
3/32" = 1'-0"



TRUE NORTH PLAN NORTH

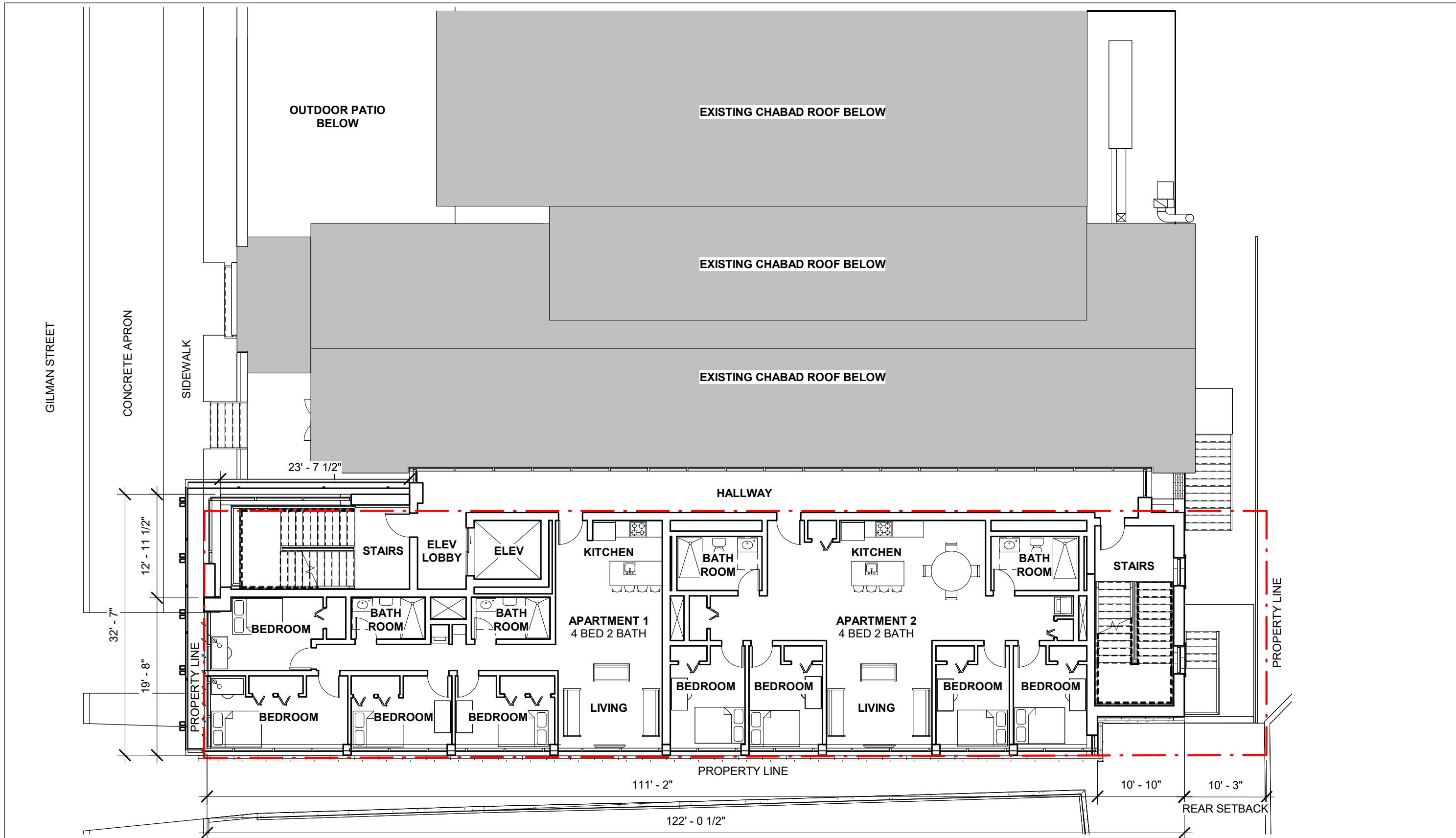
# University of Wisconsin Chabad Renovation & Addition

ASSEMBLAGE ARCHITECTS

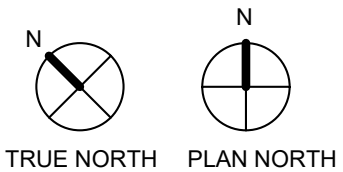
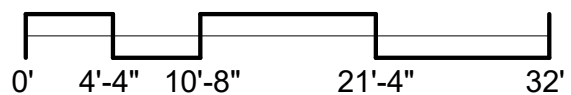
December 18th, 2023







1 THIRD FLOOR PLAN  
3/32" = 1'-0"

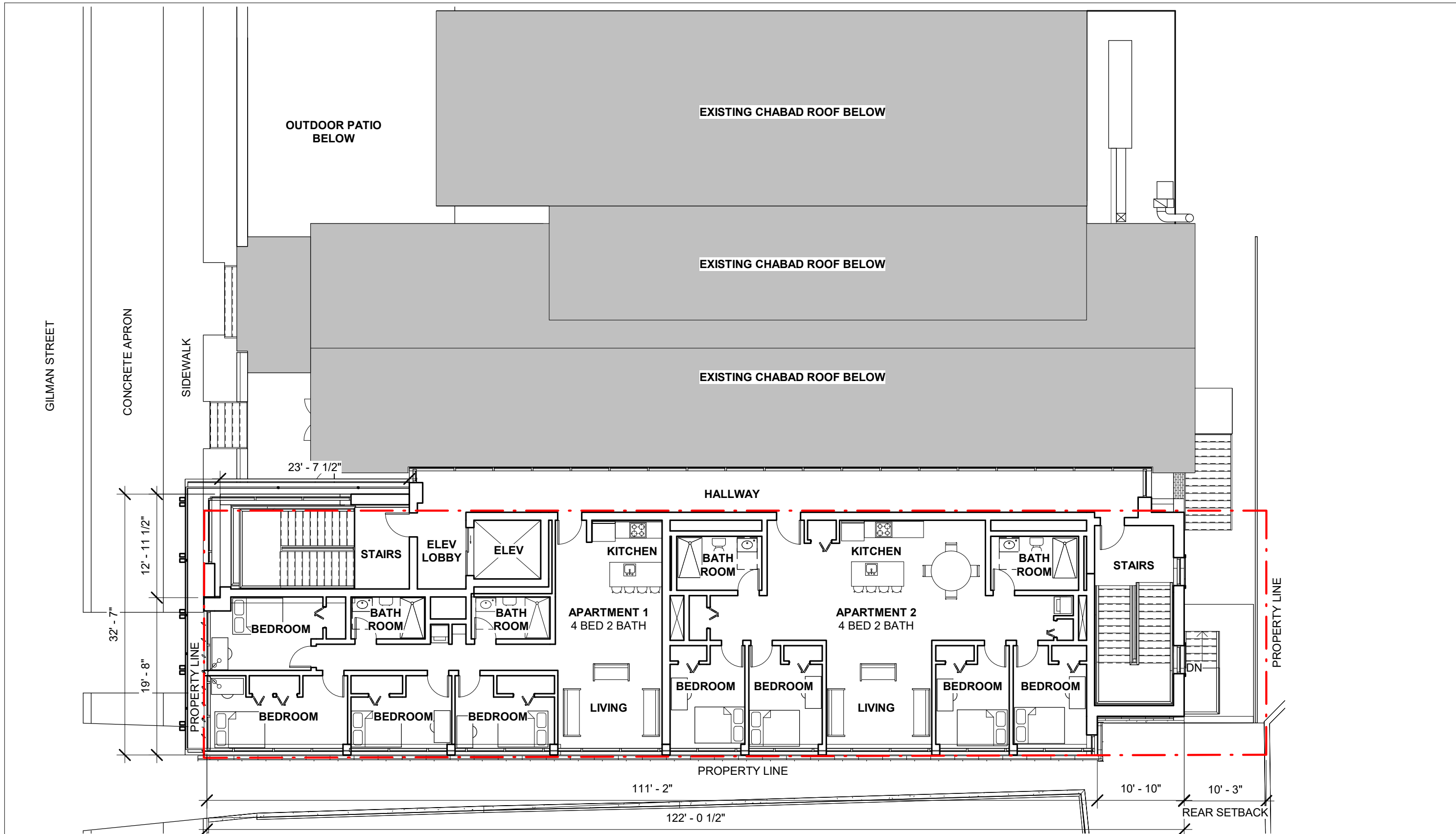


# University of Wisconsin Chabad Renovation & Addition

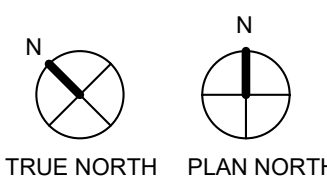
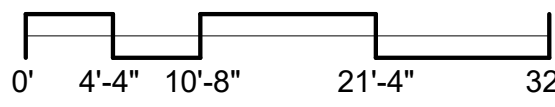
ASSEMBLAGE ARCHITECTS

December 18th, 2023





① FOURTH FLOOR PLAN  
3/32" = 1'-0"

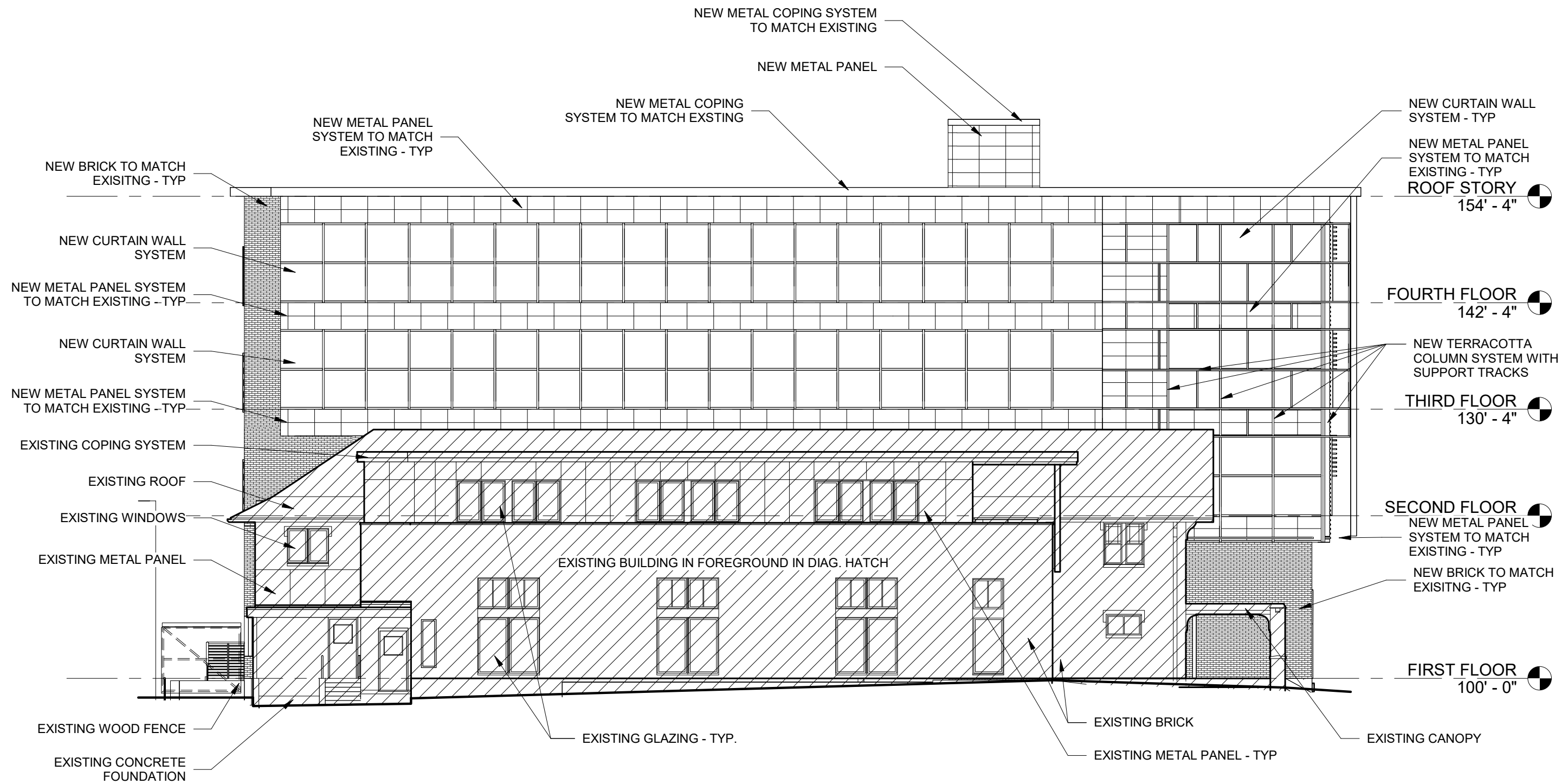


# University of Wisconsin Chabad Renovation & Addition

ASSEMBLAGE ARCHITECTS

December 18th, 2023





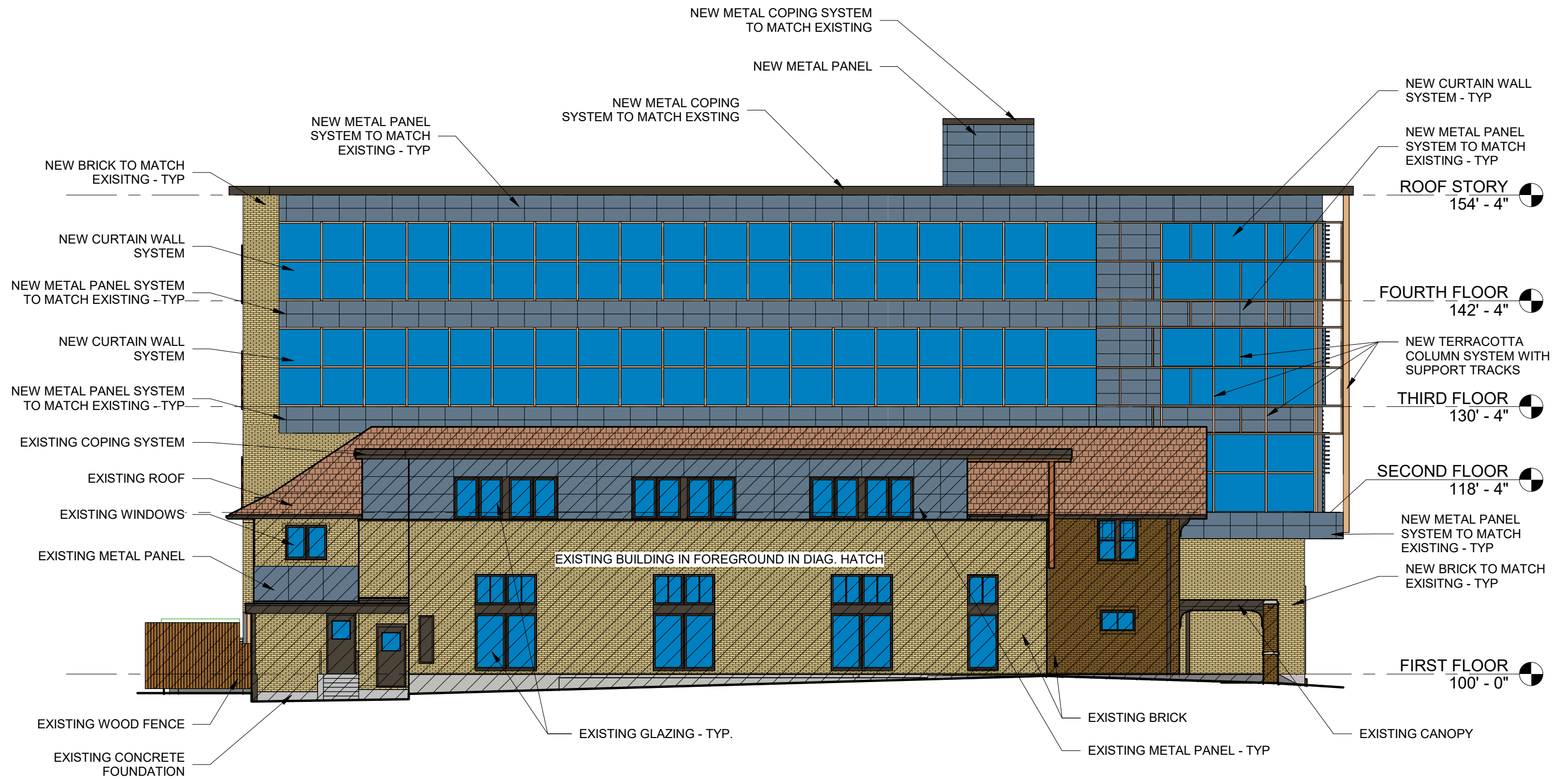
1 EXTERIOR ELEVATION - NORTH  
3/32" = 1'-0"

# University of Wisconsin Chabad Renovation & Addition

ASSEMBLAGE ARCHITECTS

December 18th, 2023





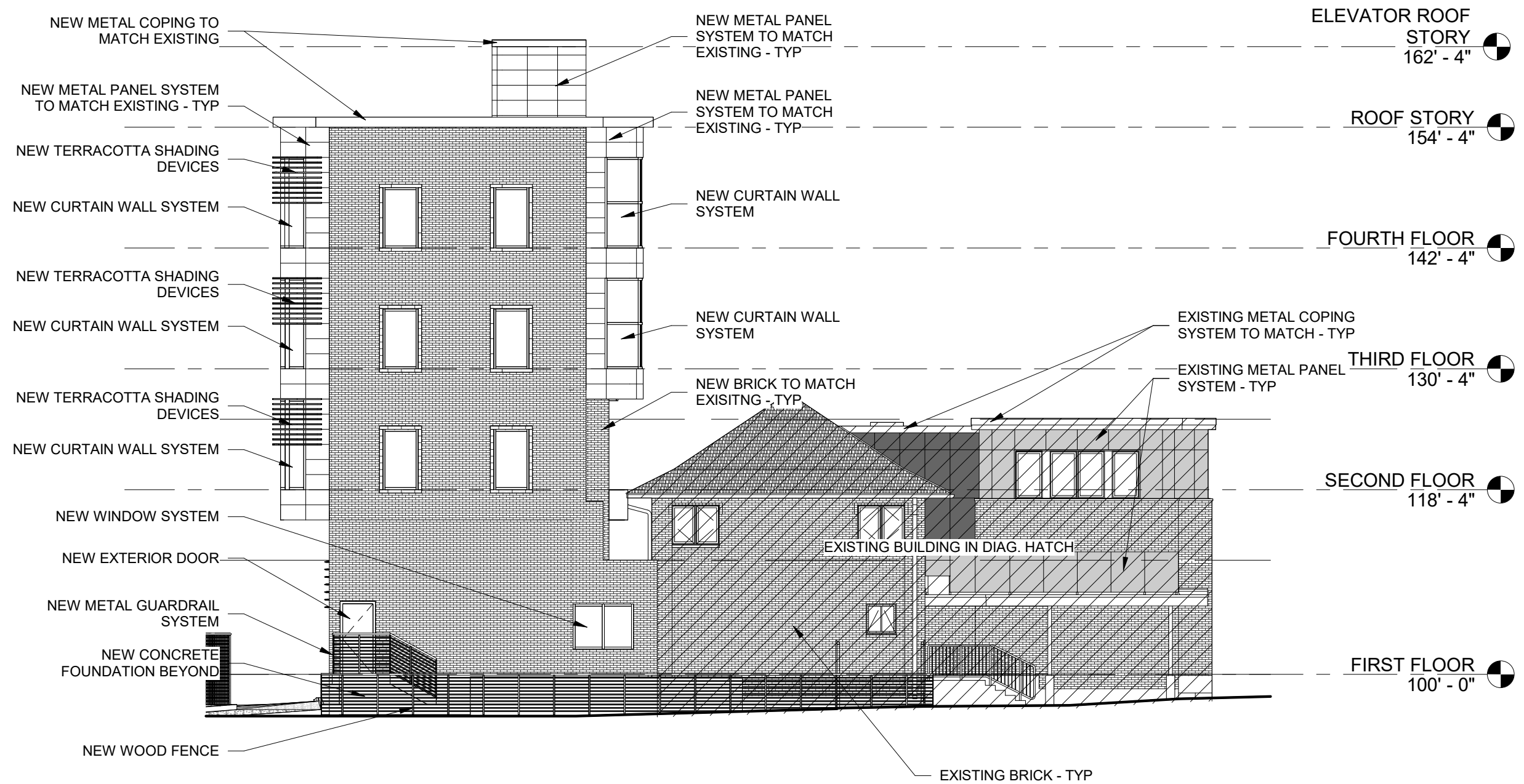
1 EXTERIOR ELEVATION - NORTH -  
 COLOR  
 3/32" = 1'-0"

# University of Wisconsin Chabad Renovation & Addition

ASSEMBLAGE ARCHITECTS

December 18th, 2023





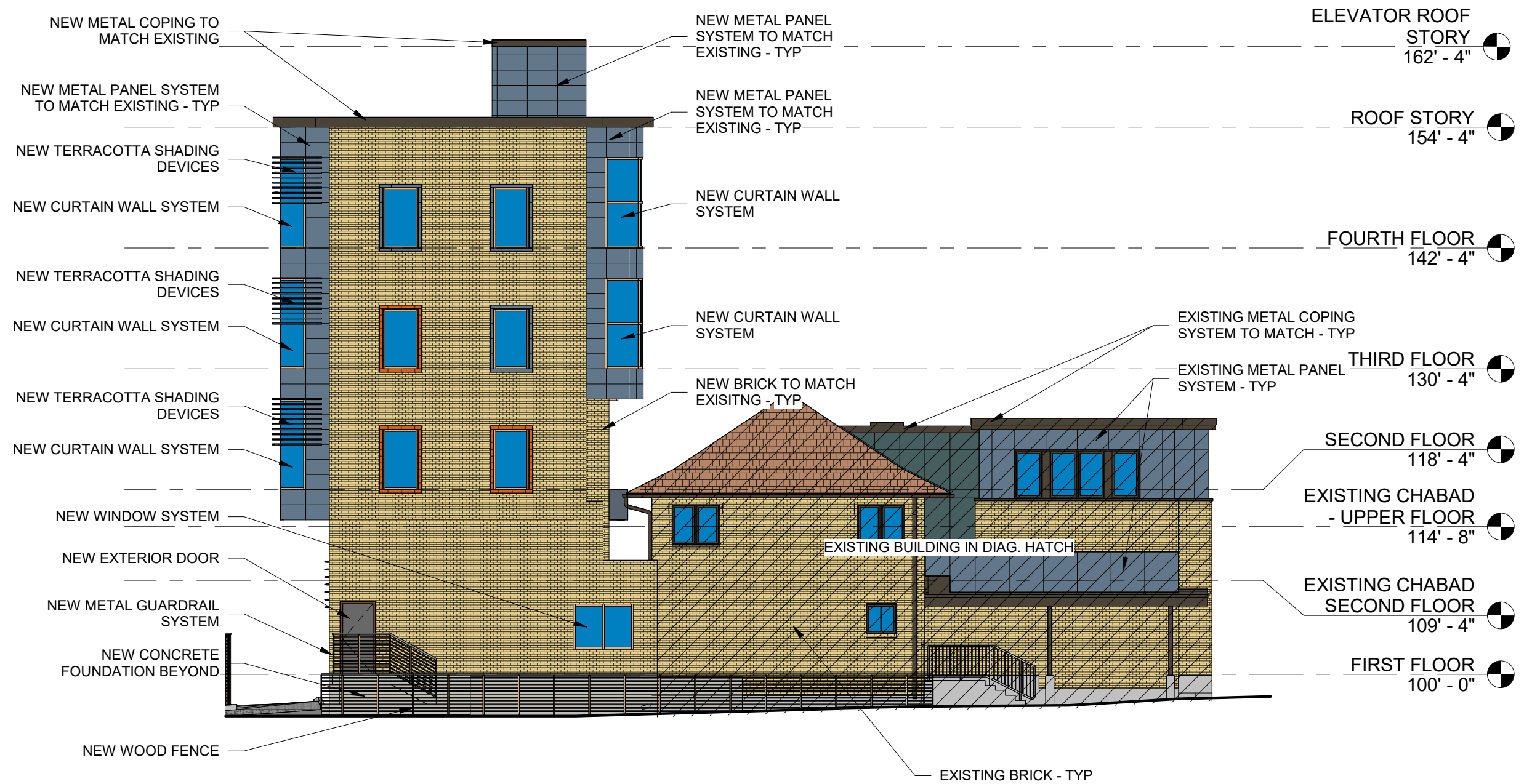
① EXTERIOR ELEVATION - EAST  
 3/32" = 1'-0"

# University of Wisconsin Chabad Renovation & Addition

ASSEMBLAGE ARCHITECTS

December 18th, 2023





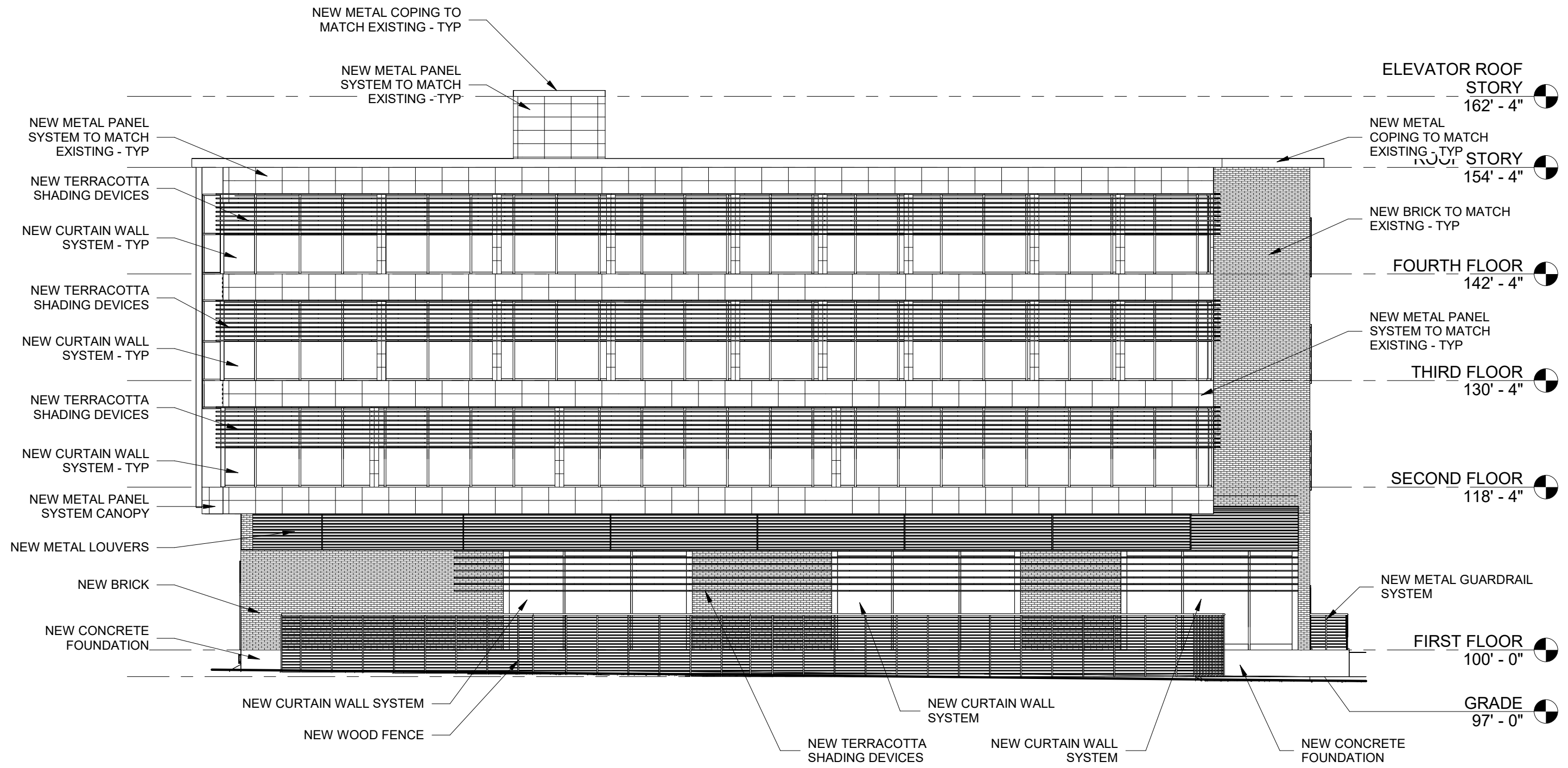
① EXTERIOR ELEVATION - EAST - COLOR  
 3/32" = 1'-0"

# University of Wisconsin Chabad Renovation & Addition

ASSEMBLAGE ARCHITECTS

December 18th, 2023





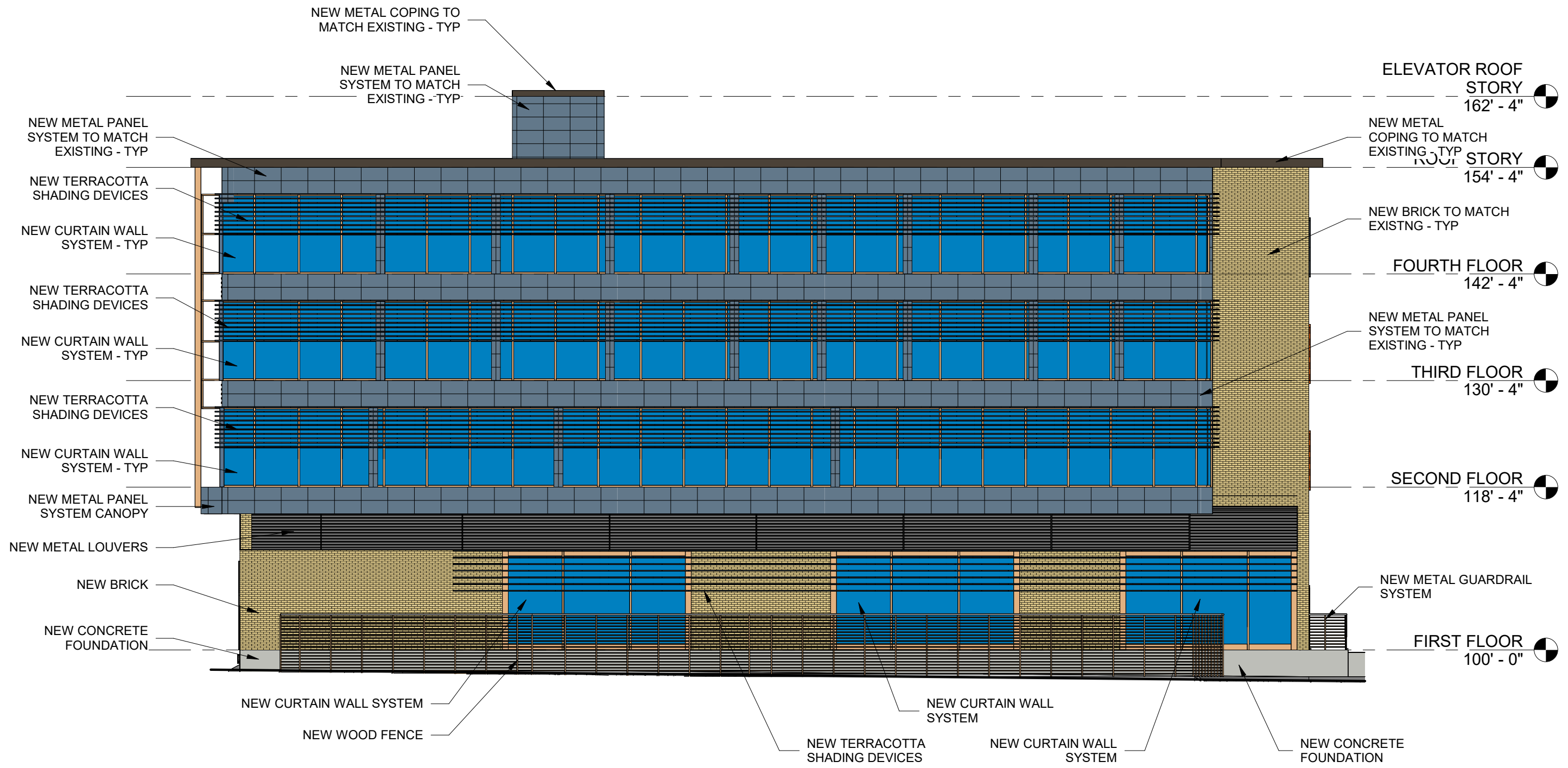
① EXTERIOR ELEVATION - SOUTH  
3/32" = 1'-0"

# University of Wisconsin Chabad Renovation & Addition

ASSEMBLAGE ARCHITECTS

December 18th, 2023





① EXTERIOR ELEVATION - SOUTH - COLOR  
 3/32" = 1'-0"

# University of Wisconsin Chabad Renovation & Addition

ASSEMBLAGE ARCHITECTS

December 18th, 2023

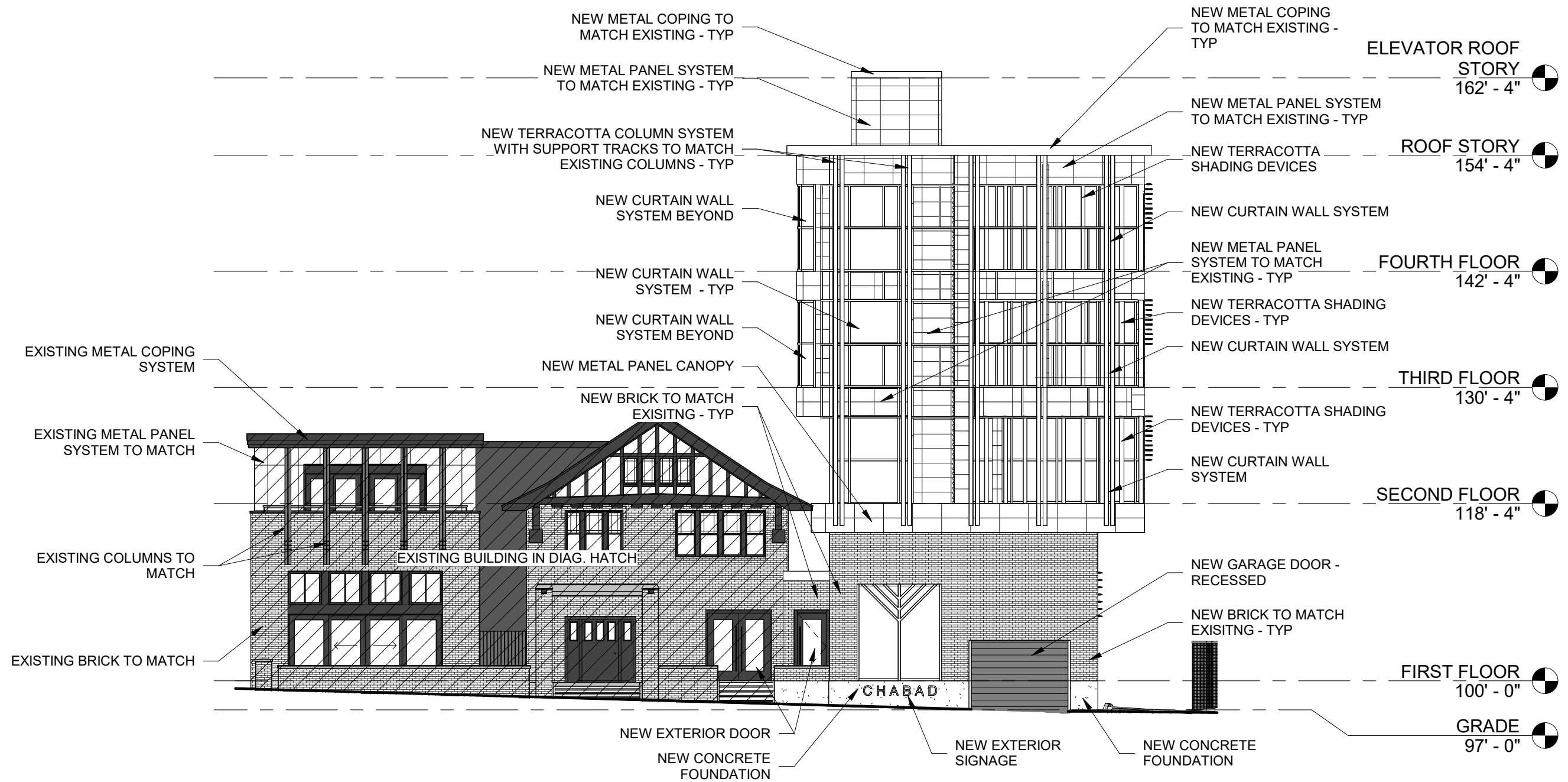




28.0731(3)(e) DOOR AND WINDOW OPENINGS - STREET FACING FACADE

GROUND STORY TOTAL SQ. FT.: 576 SQ. FT.  
 GROUND STORY OPENINGS SQ. FT.: 107 SQ. FT. (18%)  
 UPPER STORIES TOTAL SQ. FT.: 1,406 SQ. FT.  
 UPPER STORIES OPENING SQ. FT.: 687 SQ. FT. (35%)

TOTAL STREET FACING FACADE SQ FT: 1,982 SQ. FT.



① EXTERIOR ELEVATION - WEST  
 3/32" = 1'-0"

University of Wisconsin Chabad Renovation & Addition

ASSEMBLAGE ARCHITECTS

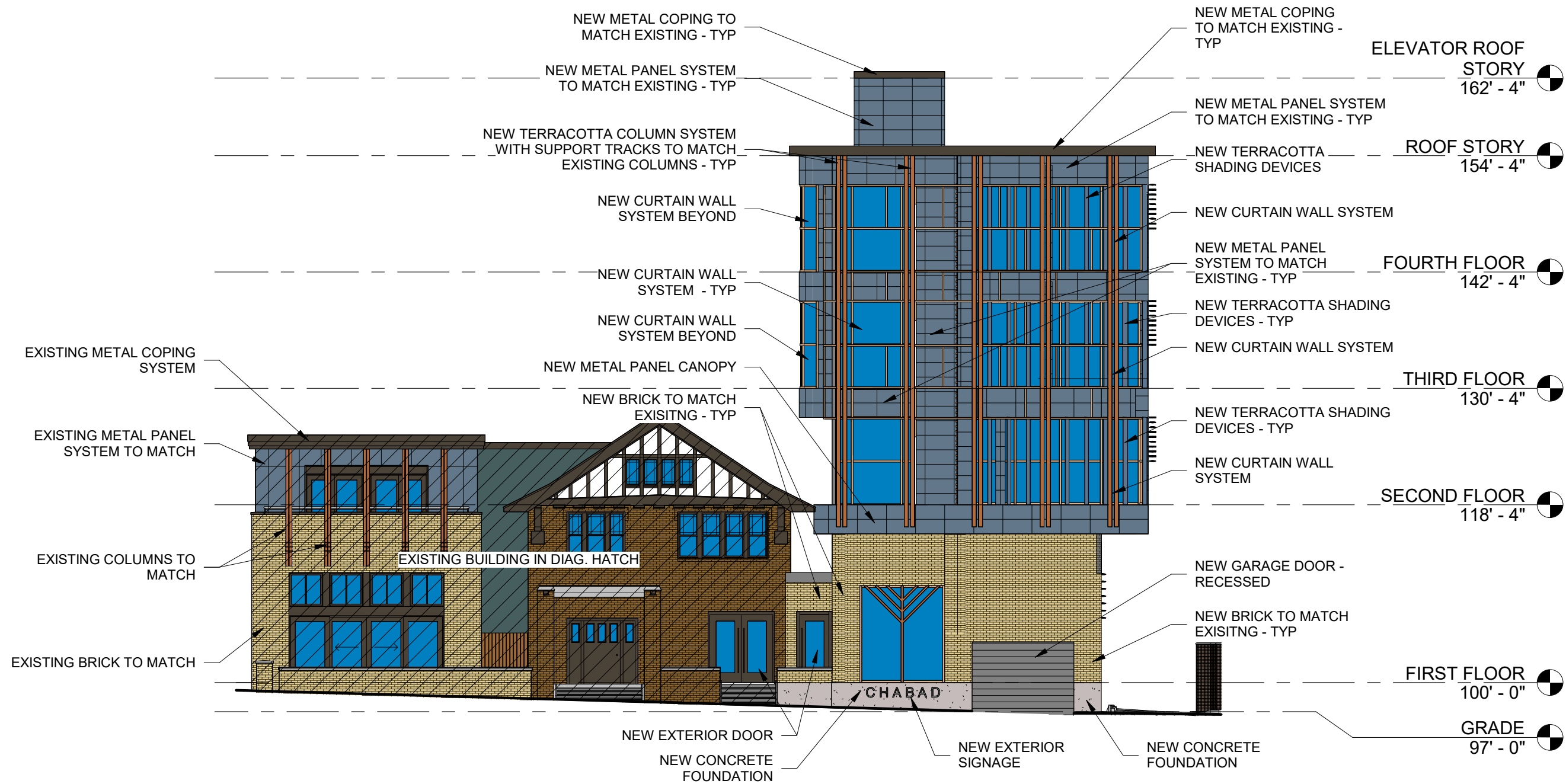
December 18th, 2023



28.0731(3)(e) DOOR AND WINDOW OPENINGS - STREET FACING FACADE

GROUND STORY TOTAL SQ. FT.: 576 SQ. FT.  
 GROUND STORY OPENINGS SQ. FT.: 107 SQ. FT. (18%)  
 UPPER STORIES TOTAL SQ. FT.: 1,406 SQ. FT.  
 UPPER STORIES OPENING SQ. FT.: 687 SQ. FT. (35%)

TOTAL STREET FACING FACADE SQ FT: 1,982 SQ. FT.



① EXTERIOR ELEVATION - WEST - COLOR  
 3/32" = 1'-0"

# University of Wisconsin Chabad Renovation & Addition

ASSEMBLAGE ARCHITECTS

December 18th, 2023





Summer - Day



Winter - Day



Summer - Night

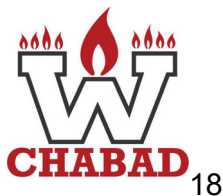


Winter - Night

# University of Wisconsin Chabad Renovation & Addition

ASSEMBLAGE ARCHITECTS

December 18th, 2023





Summer - Day



Winter - Day



Summer - Night

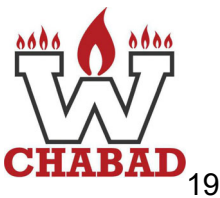


Winter - Night

# University of Wisconsin Chabad Renovation & Addition

ASSEMBLAGE ARCHITECTS

December 18th, 2023





Summer - Day



Winter - Day



Summer - Night

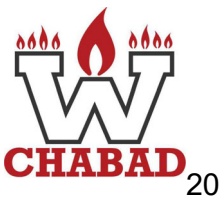


Winter - Night

# University of Wisconsin Chabad Renovation & Addition

ASSEMBLAGE ARCHITECTS

December 18th, 2023





Summer - Day



Winter - Day



Summer - Night



Winter - Night

# University of Wisconsin Chabad Renovation & Addition

ASSEMBLAGE ARCHITECTS

December 18th, 2023





Summer - Day



Winter - Day



Summer - Night



Winter - Night

# University of Wisconsin Chabad Renovation & Addition

ASSEMBLAGE ARCHITECTS

December 18th, 2023





Summer - Day



Winter - Day



Summer - Night



Winter - Night

# University of Wisconsin Chabad Renovation & Addition

ASSEMBLAGE ARCHITECTS

December 18th, 2023







Summer - Day



Winter - Day



Summer - Night



Winter - Night

# University of Wisconsin Chabad Renovation & Addition

ASSEMBLAGE ARCHITECTS

December 18th, 2023





Summer - Day



Winter - Day



Summer - Night



Winter - Night

# University of Wisconsin Chabad Renovation & Addition

ASSEMBLAGE ARCHITECTS

December 18th, 2023

