

A watercolor illustration of a park scene. It features a winding path, a small orange building, a yellow boat on a blue stream, and various green trees and bushes. The style is soft and artistic.

# ***Parks for All, Forever***





# *Get to know* **MADISON PARKS**

Investing in our parks directly contributes to a vibrant local economy. They increase property values, attract businesses and tourists, create jobs, and — most importantly — connect people across the community.

EACH YEAR OUR PARKS HOST  
**6 MILLION VISITS**  
AND **MORE THAN**  
**75 FREE PROGRAMS**  
AND EVENTS

**280+ UNIQUE PARKS**  
**WITH NEARLY 6,000 ACRES**  
**OF PARKLAND**

**95% OF RESIDENTS**  
**LIVE WITHIN A**  
**10-MINUTE WALK**  
**OF A PARK<sup>1</sup>**

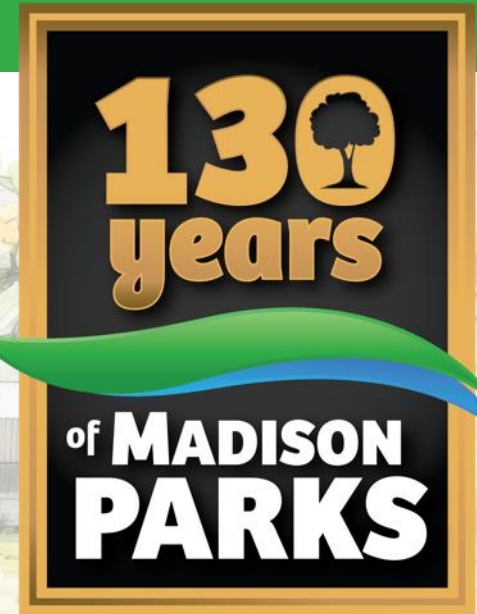
<sup>1</sup> SOURCED: NATIONAL RECREATION AND PARK ASSOCIATION (NRPA), TRUST FOR PUBLIC LAND, U.S. CENSUS BUREAU, ESRI



2024 marked 130 years of Madison's dedication to preserving public spaces. Our parks have evolved over the years to meet the community's changing needs, and today they are more vibrant and engaging than ever!

As Madison Parks' non-profit partner, the Madison Parks Foundation works to conserve, promote, and enhance our parks.

With 95¢ of every dollar raised going directly back into our world-class parks, your contributions are shaping the future of our community spaces.





## *Our work*

By connecting private support to public initiatives, our work helps fund and sustain park expansion, amenities and improvements, and free to low-cost programming.

These amenities and programs bring people from across the state to enjoy our parks and open spaces through concerts and performing arts series, movie nights, adaptive exercise and skill learning opportunities, and so much more.



Madison  
is home to  
**5 of the 15**  
accessible  
playgrounds  
in the state!

**FRAUTSCHI FAMILY ACCESSIBLE  
PLAYGROUND AT WARNER PARK**



# Improving accessibility

through features such as beach mats, fishing piers, and cognitive and mobility-friendly playgrounds.



## Experience our impact:

- **Frautschi Family Accessible Playground**  
at Warner Park
- **Jenni & Kyle Foundation Accessible Playground**  
at Brittingham Park
- **Jeff Erlanger Accessible Playground and Sprayground**  
at Rennebohm Park



Beach access mats provide a firmer surface for those who need it to cross the sand, such as people who use wheelchairs or other mobility aids.





**K.N.O.W. PROGRAM FISHING**



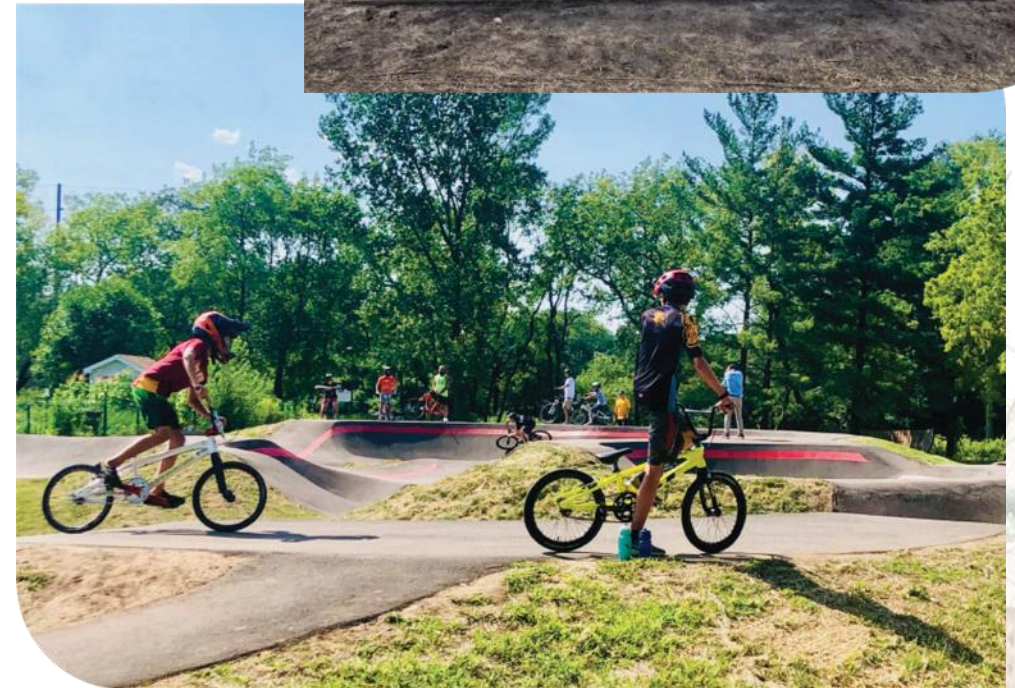
**K.N.O.W. PROGRAM BASKETBALL**

## Free and low-cost programming:

- ✿ **Learning Series** free and low-cost equipment, and introduction to new skills and hobbies within our parks.
- ✿ **K.N.O.W. (Kids Need Opportunities at Warner)** program provides positive and engaging programming for youth in our area.
- ✿ **Live at the Glen Series** a free-to-attend community-building music and performing arts events.
- ✿ **Access to swimming programs** and scholarships at Goodman Community Pool.
- ✿ **And more!**

**Park enhancements** through financing and facilitating citizen-led improvements, including the **Saris Foundation Bike Park, Futsal courts**, the renovation of **The Glen Golf Park**, and **custom tributes and memorials** throughout the park grounds and dog parks.

Thanks to your support, our work can be enjoyed in parks and open spaces across the community. **However, we need your ongoing support to continue our mission and sustain our vision for the future.**







John Olin, the founder of our park system, established a Trust that still supports our parks over 100 years later. Inspired by this legacy, the Madison Parks Foundation is launching the **Parks For All Trust Campaign** to ensure our parks' future. We're honoring our past to build a lasting future.

The primary purpose of this Trust will be to generate more use of our parks by supporting programming, capital projects, and the development of other enhancements to our parks that drive inclusivity and access, **unfunded by tax dollars.**







## *Parks for All*

Making our parks “accessible” means addressing physical, cognitive, and socioeconomic obstacles that keep people from reaching and enjoying our parks.

These obstacles will continue to change and grow long into the future, so our ability to fund solutions must be flexible.

The specific initiatives will change, but our focus will always be the same: **parks should be for all people, forever.**



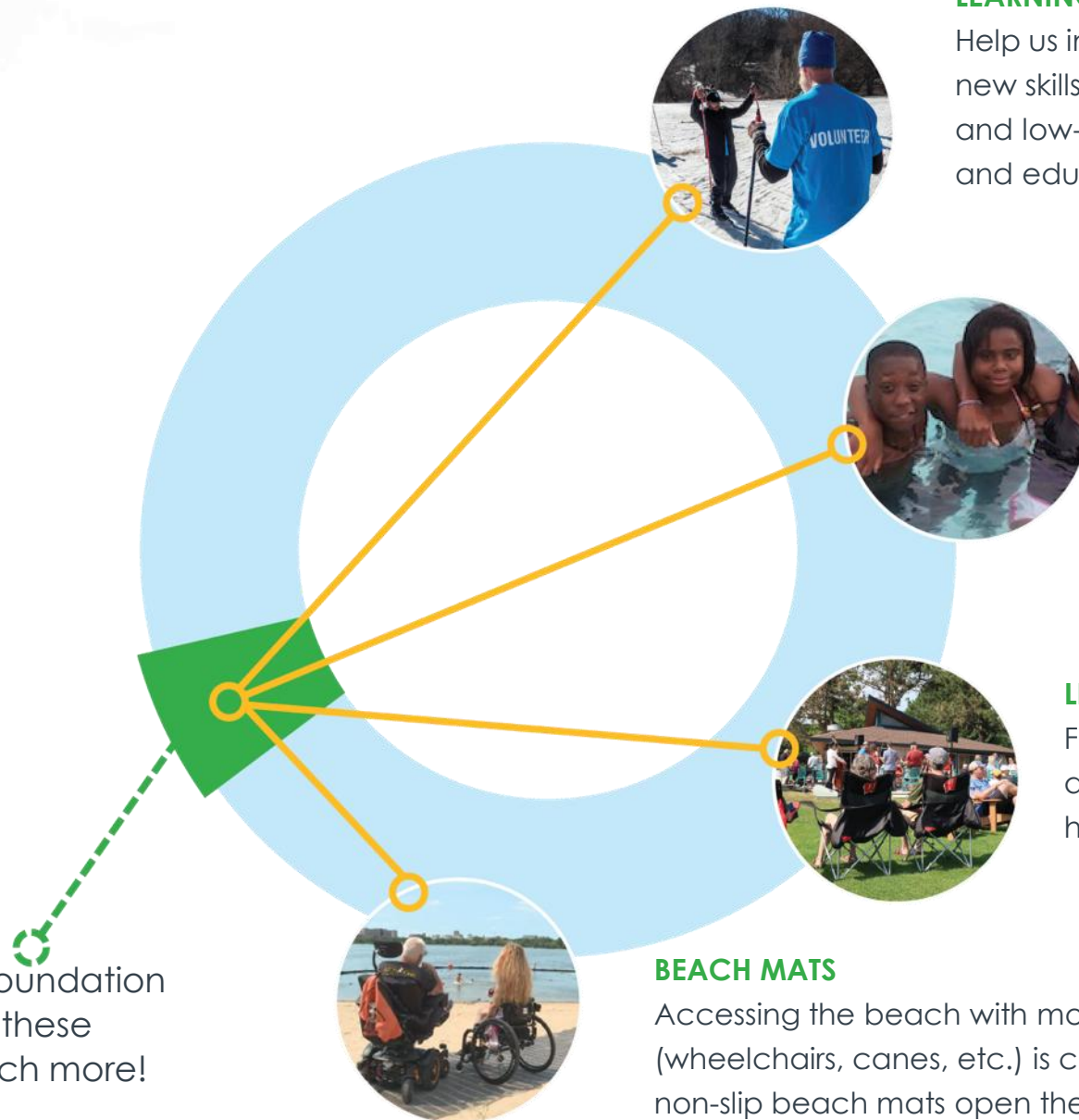
# The Madison Parks Foundation

Since 1894, Madison Parks have added richness and vibrancy to the landscape of Madison. As the non-profit partner of Madison Parks, the Madison Parks Foundation helps our community conserve, promote, and enhance our parks. We exist to support Madison's world-class parks system. In addition to our work helping neighborhoods steward improvements to their parks, we've identified areas that advance accessibility, equity and programming goals for Madison's Parks.

Madison Parks Foundation works to protect and improve our city parks and open spaces for all people, forever.

Simply put, Parks for All, Forever.

The Madison Parks Foundation provides funding for these initiatives and so much more!



## LEARNING SERIES EVENTS

Help us introduce more people to new skills and hobbies with free and low-cost equipment rentals and educational events

## GOODMAN POOL ACCESS

MPF sponsors family and youth passes for community members who may not otherwise be able to afford them.

## LIVE AT THE GLEN MUSIC SERIES

Free-to-attend concerts provide access to local live music in a historic outdoor setting.

## BEACH MATS

Accessing the beach with mobility devices (wheelchairs, canes, etc.) is challenging. Rigid, non-slip beach mats open these areas for more visitors to enjoy.



Madison is truly a special place to live that includes:

- **287 Parks**
- **5,600 acres of parkland**
- **95% of its residents live within a 10-minute walk to a park.**



Madison Parks Foundation is  
planning for the future of our  
parks through an idea  
inspired by the vision that our  
state was founded upon:  
**FORWARD**





Completed with your help include:



Scholarships for Pool Access



Lifejackets to use at the pool



3 Water Wheelchairs



2 Accessible Beach Mats



Free Learning Series events



Clubhouse & Patio Updates



Free Programs & Events at the Glen





# 2025 Picnic in the Park

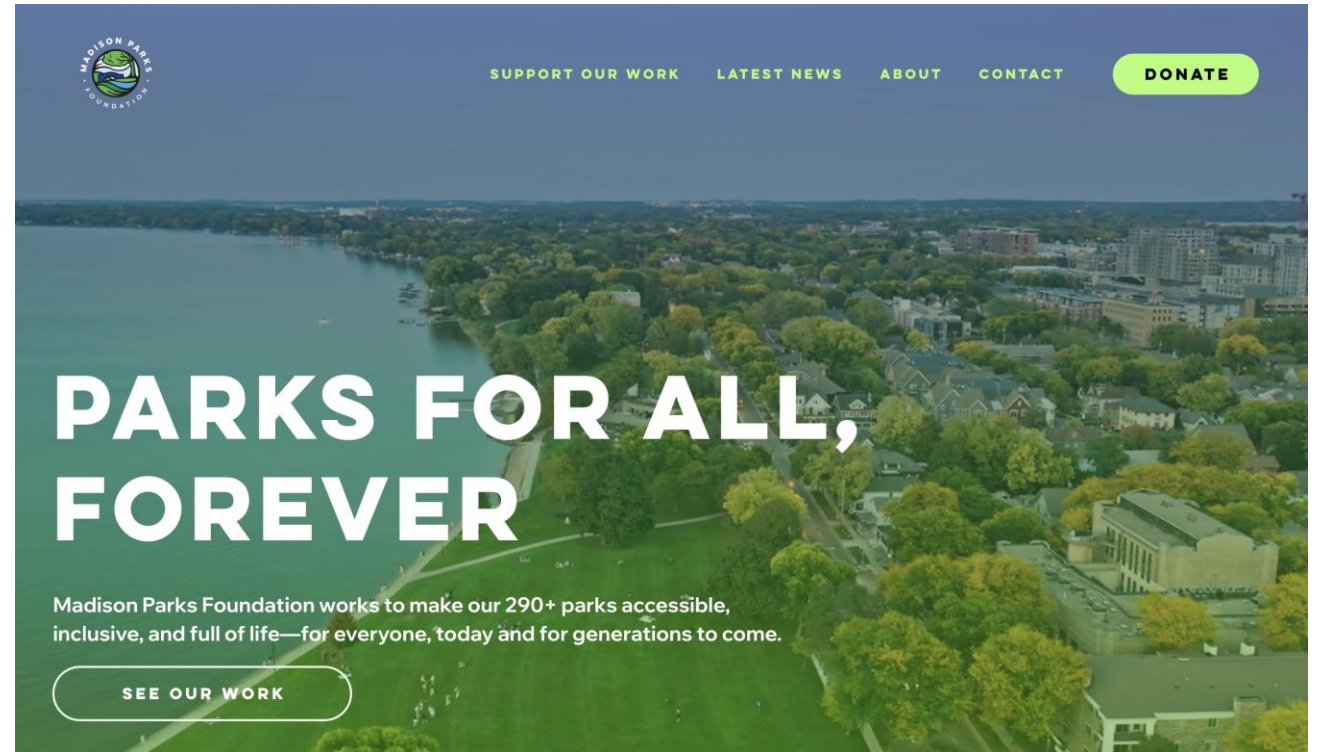
—  
Westmorland  
Park



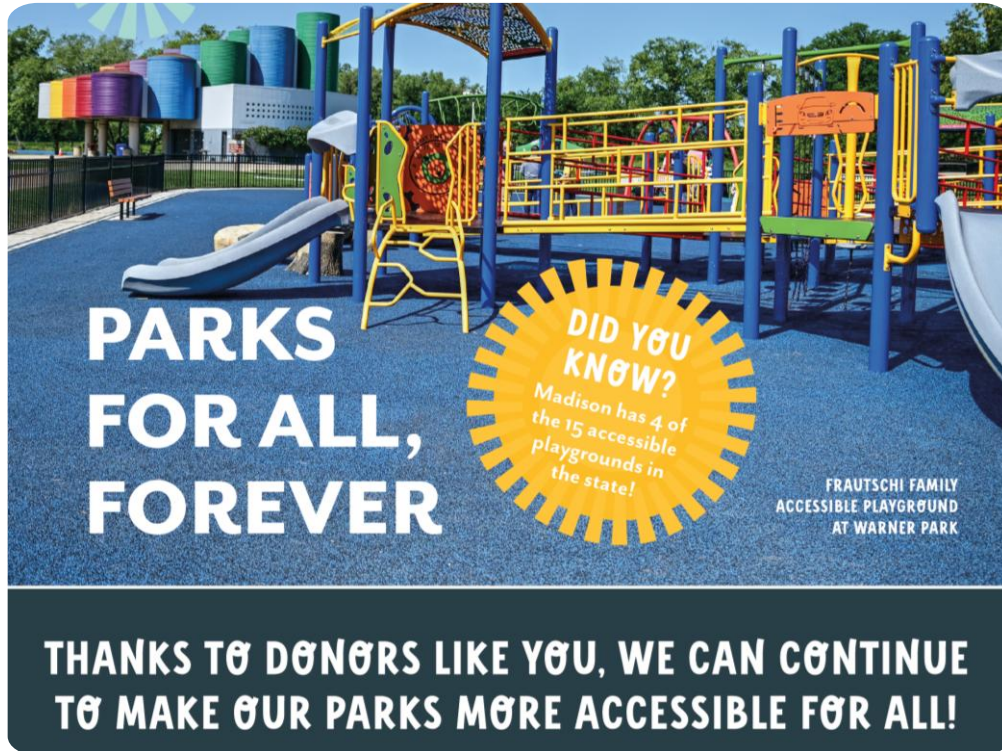


Jeff Erlanger  
Playground &  
Sprayground  
Ribbon Cutting  
—  
Rennebohm Park

- A refreshed website will launch by the end of October/early November
- Donating will be easier
- Finding information will be easier
- Event management can be housed on the website, saving money
- And the website can be managed internally, saving money







- Year-end appeal is in development with a target mail date of mid-November
- Will be mailed to approximately 6,800 area people
- This is one of our only mailings for the year