

PROJECT ID: 5300-06-71 & 5300-06-72
WITH: 5300-04-75

COUNTY: DANE

ORDER OF SHEETS

- Section No. 1 Title
- Section No. 2 Typical Sections and Details (Includes erosion control)
- Section No. 3 Estimate of Quantities
- Section No. 3 Miscellaneous Quantities
- Section No. 4 Right of Way Plat
- Section No. 5 Plan and Profile
- Section No. 6 Standard Detail Drawings
- Section No. 7 Sign Plates
- Section No. 8 Structure Plans
- Section No. 9 Computer Earthwork Data
- Section No. 9 Cross Sections

TOTAL SHEETS =



STATE OF WISCONSIN DEPARTMENT OF TRANSPORTATION

PLAN OF PROPOSED IMPROVEMENT

MIDDLETON - MADISON MIDDLETON - MADISON

OLD SAUK ROAD INTERCHANGE MINERAL POINT ROAD INTERCHANGE

USH 12 USH 12

DANE COUNTY DANE COUNTY

STATE PROJECT	FEDERAL PROJECT	
	PROJECT	CONTRACT
5300-06-71		
5300-06-72		

STATE PROJECT NUMBER
5300-06-71

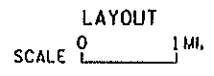
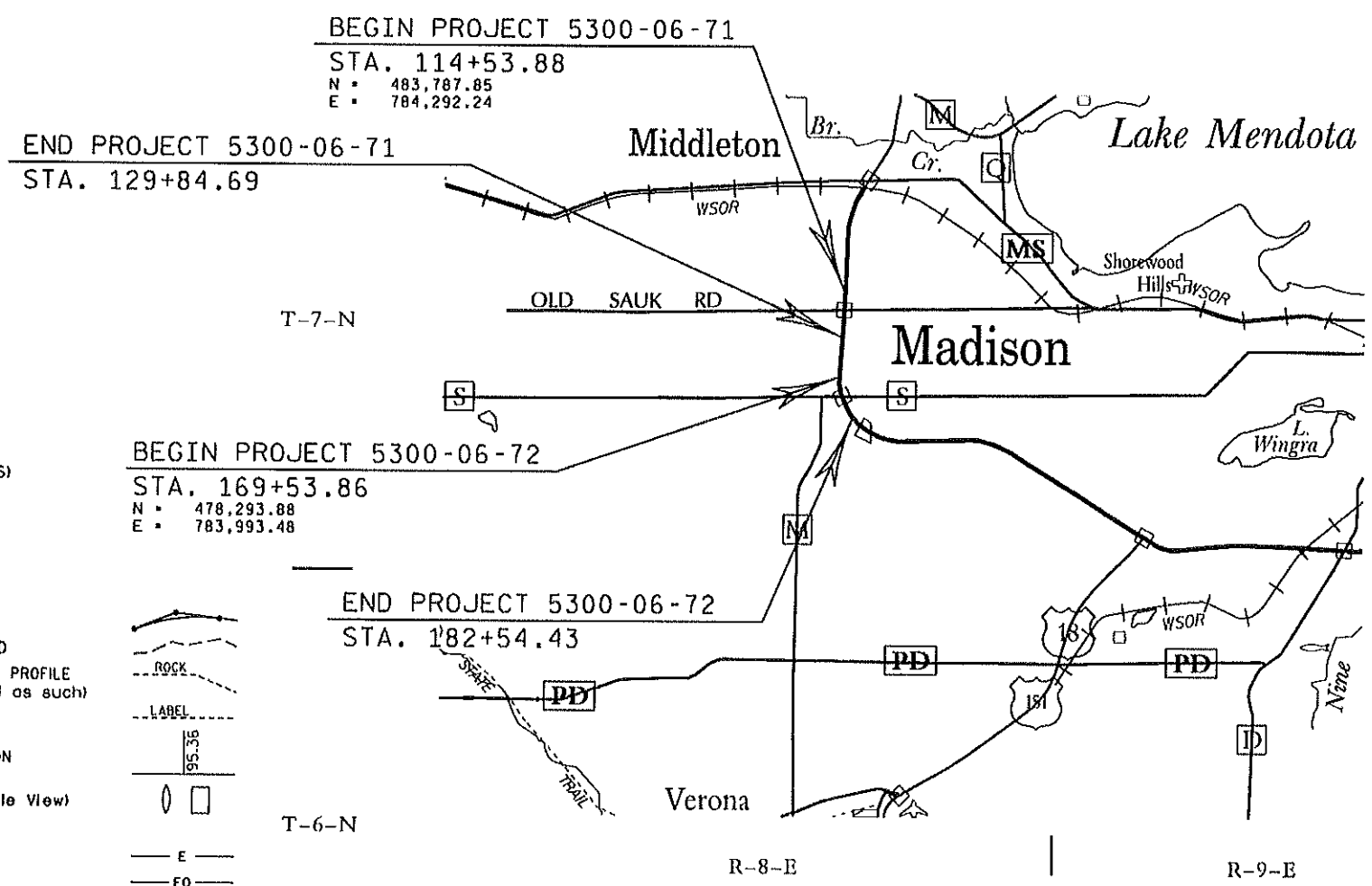
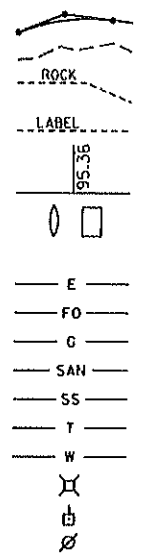
STATE PROJECT NUMBER
5300-06-72

DESIGN DESIGNATION	5300-06-71	5300-06-72
A.A.D.T. (2008)	= 61,760 (USH 12)	57,840 (USH 12)
A.A.D.T. (2020)	= 91,775 (USH 12)	85,940 (USH 12)
D.H.V.	= N/A	N/A
D.D.	= N/A	N/A
T.	= 3.89% (USH 12)	3.89% (USH 12)
DESIGN SPEED	= N/A	N/A
ESALS	= 1,036,600 (RAMPS)	1,036,600 (RAMPS)

CONVENTIONAL SYMBOLS

- PLAN
- CORPORATE LIMITS
- PROPERTY LINE
- LOT LINE
- LIMITED HIGHWAY EASEMENT
- EXISTING RIGHT OF WAY
- PROPOSED OR NEW R/W LINE
- SLOPE INTERCEPT
- REFERENCE LINE
- EXISTING CULVERT
- PROPOSED CULVERT (Box or Pipe)
- COMBUSTIBLE FLUIDS
- MARSH AREA
- WOODED OR SHRUB AREA

- PROFILE
- GRADE LINE
- ORIGINAL GROUND
- MARSH OR ROCK PROFILE (To be noted as such)
- SPECIAL DITCH
- GRADE ELEVATION
- CULVERT (Profile View)
- UTILITIES
- ELECTRIC
- FIBER OPTIC
- GAS
- SANITARY SEWER
- STORM SEWER
- TELEPHONE
- WATER
- UTILITY PEDESTAL
- POWER POLE
- TELEPHONE POLE



TOTAL NET LENGTH OF CENTERLINE = 0.000 MI.

COORDINATES ON THIS PLAN ARE REFERENCED TO THE WISCONSIN COUNTY COORDINATE SYSTEM (WCCS), DANE COUNTY. ELEVATIONS SHOWN ON THE PLAN ARE REFERENCED TO THE NATIONAL GEODETIC VERTICAL DATUM OF 1929 (NGVD29).

ORIGINAL PLANS PREPARED BY
EMCS
1300 W. Condo Street, Suite 200
Milwaukee, WI 53233
414.347.1607 FAX 414.347.1347



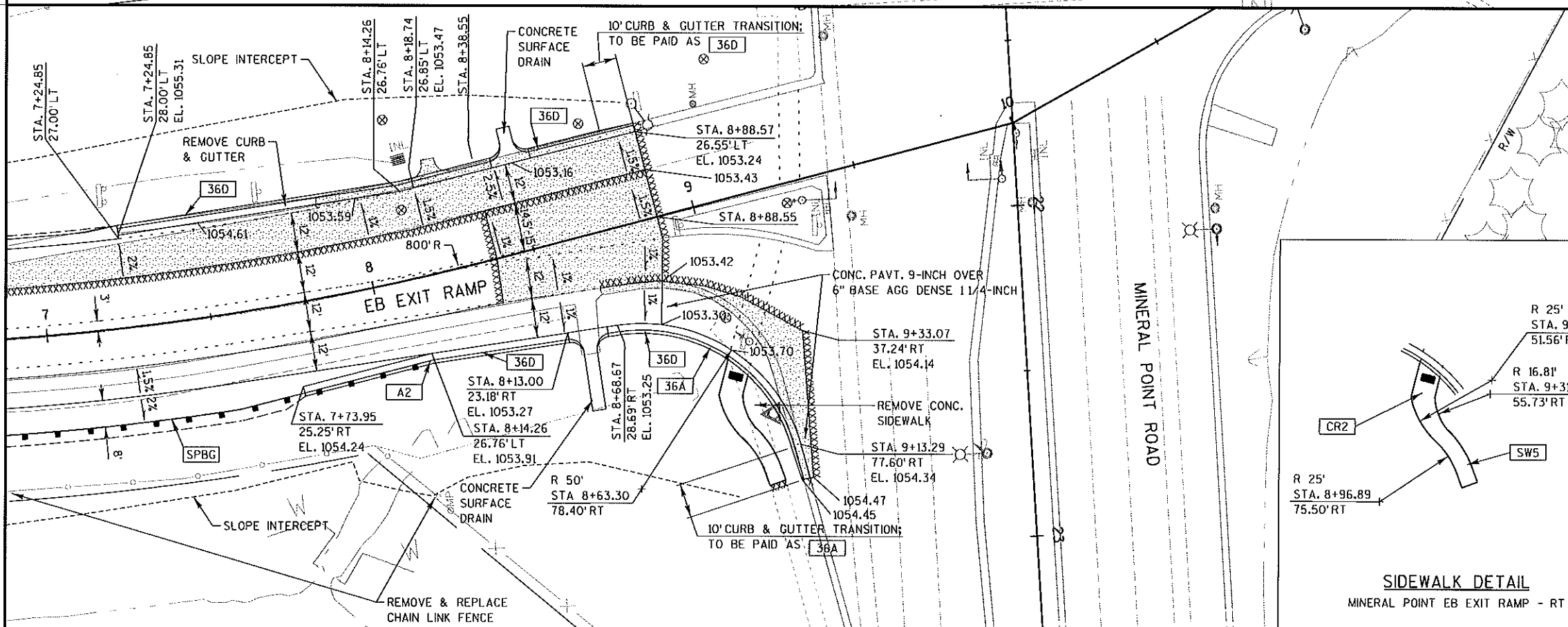
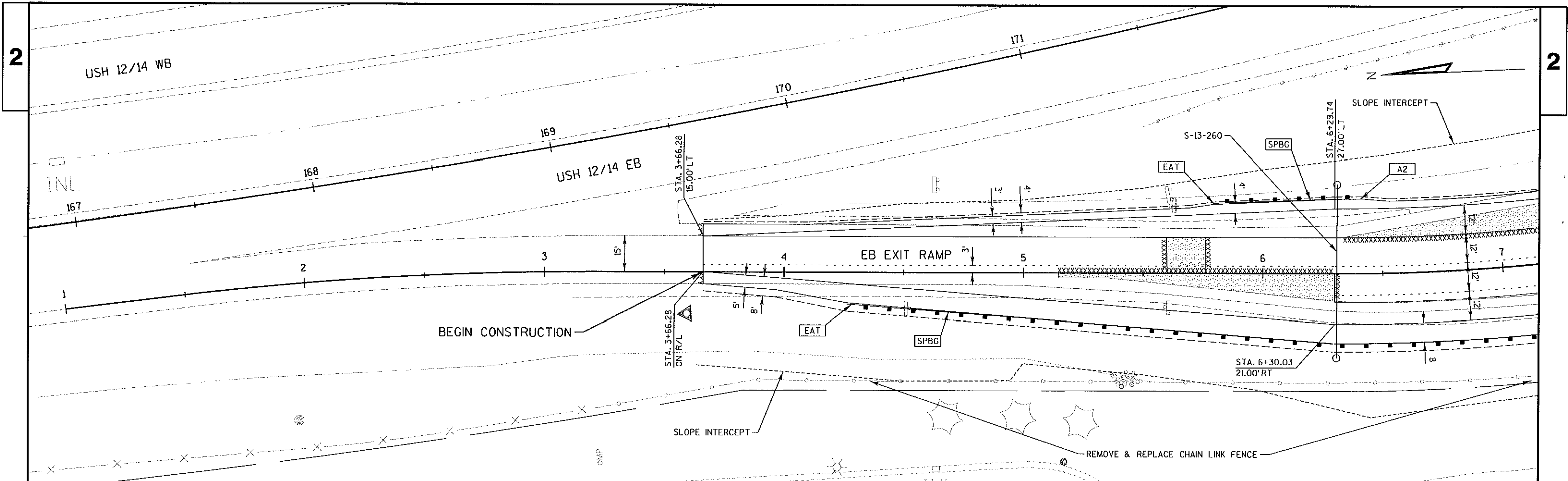
Feb 29, 2008 (Date) *Brian J. Wilson* (Signature)

STATE OF WISCONSIN
DEPARTMENT OF TRANSPORTATION

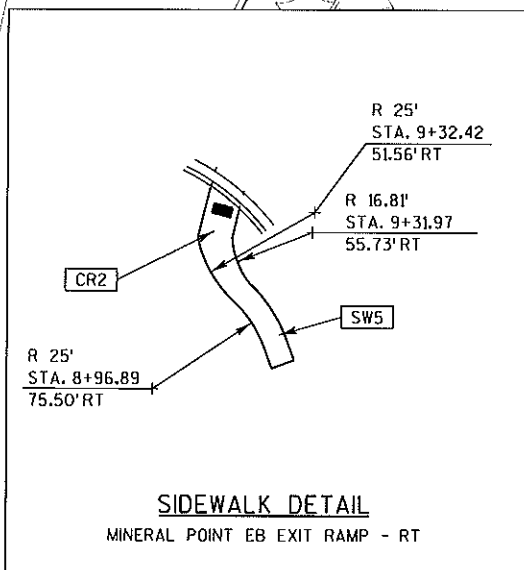
PREPARED BY

Surveyor	WISDOT/EMCS
Designer	EMCS
Project Manager	MIKE RAMPETSREITER
Regional Examiner	MIKE RAMPETSREITER
Regional Supervisor	JEFF GUST
C.O. Examiner	

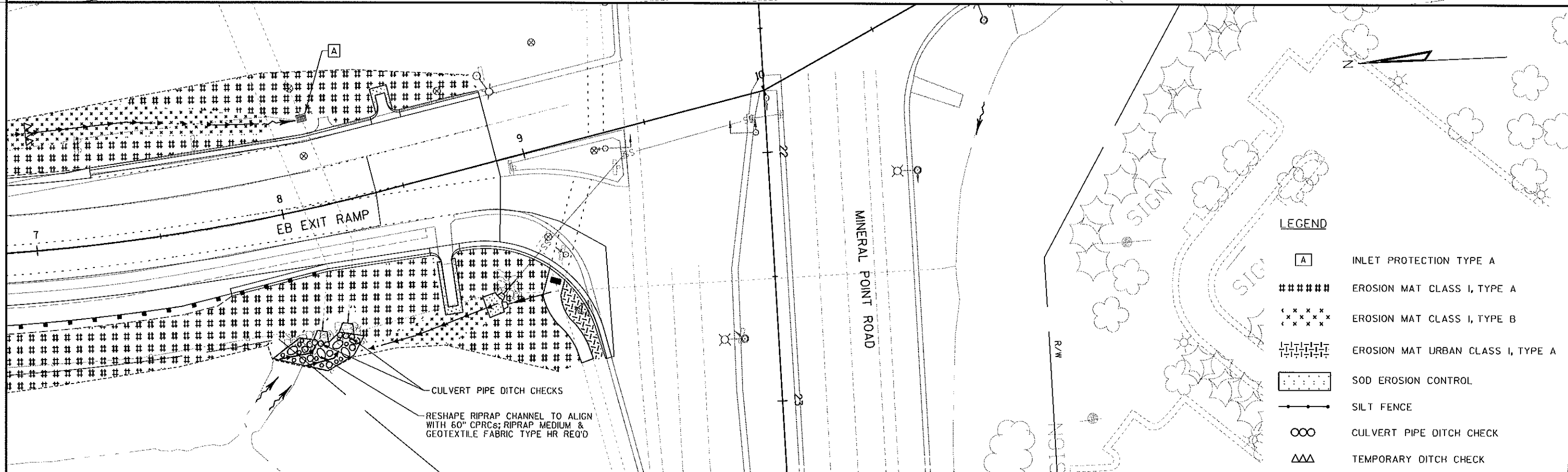
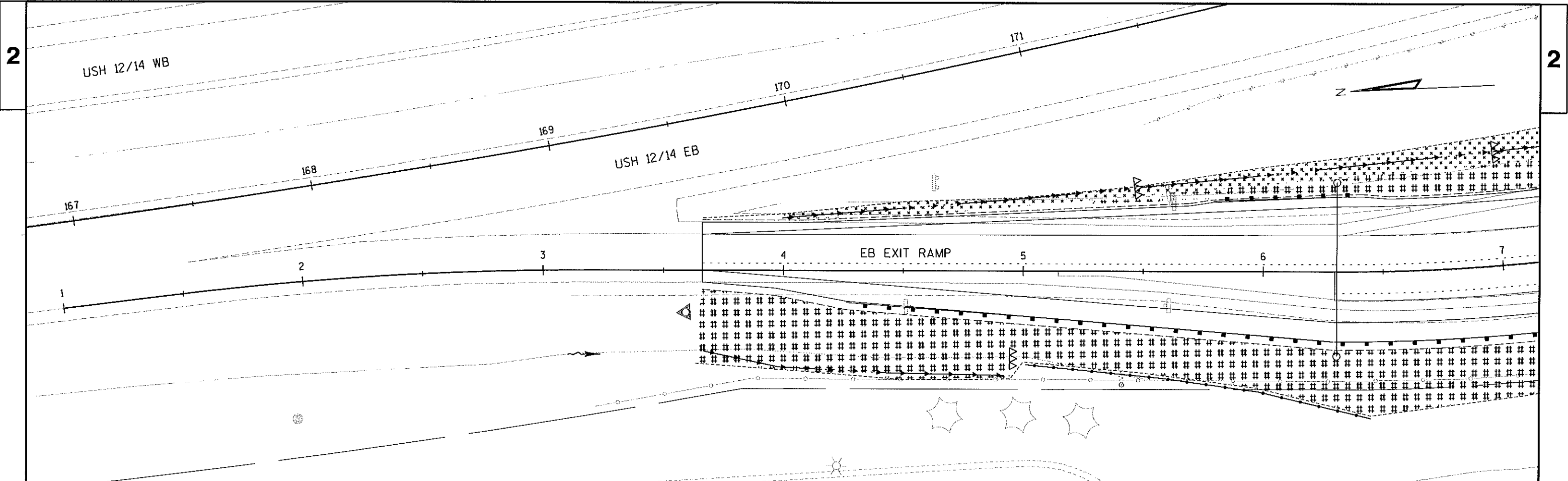
APPROVED FOR THE DEPARTMENT
DATE: 2-26-08 *[Signature]* (Signature)



NOTE
 PROPOSED CURB & GUTTER GRADES ARE BASED ON A PROPOSED 4.5" HMA OVERLAY WHERE APPLICABLE. GRADES ARE TO FLANGE LINE, EDGE OF PAVEMENT OR LANE LINE. GRADES ARE AT EVEN 50' INTERVALS UNLESS OTHERWISE NOTED.
 VERIFY HORIZONTAL AND VERTICAL INFORMATION FOR COMPATIBILITY WITH EXISTING AND PROPOSED FIELD CONDITIONS.



LEGEND	
	REMOVING PAVEMENT
	SAWING CONC. PAVEMENT FULL DEPTH
	SAWING EXISTING PAVEMENT
	CURB RAMP DETECTABLE WARNING FIELD YELLOW
	CONC. C&G, 24-INCH TYPE A
	CONC. C&G, 24-INCH TYPE D
	CONC. C&G, 30-INCH TYPE A
	CONC. C&G, 30-INCH TYPE D
	CONC. C&G, 6-INCH SLOPED 36-INCH TYPE A
	CONC. C&G, 6-INCH SLOPED 36-INCH TYPE D
	CONC. C&G, SPECIAL 36-INCH TYPE D
	CONCRETE SIDEWALK 5-INCH
	CURB RAMP TYPE 2
	CURB RAMP TYPE 5
	STEEL PLATE BEAM GUARD ENERGY ABSORBING TERMINAL
	STEEL PLATE BEAM GUARD CLASS A
	ANCHORAGES FOR STEEL PLATE BEAM GUARD TYPE 2



PROJECT NO: 5300-06-72

HWY: USH 12

COUNTY: DANE

EROSION CONTROL: MINERAL POINT ROAD - EB EXIT RAMP

SHEET

E

FILE NAME : p:\43xx\4377\plan\Erosion Control\022005_.ec.dgn

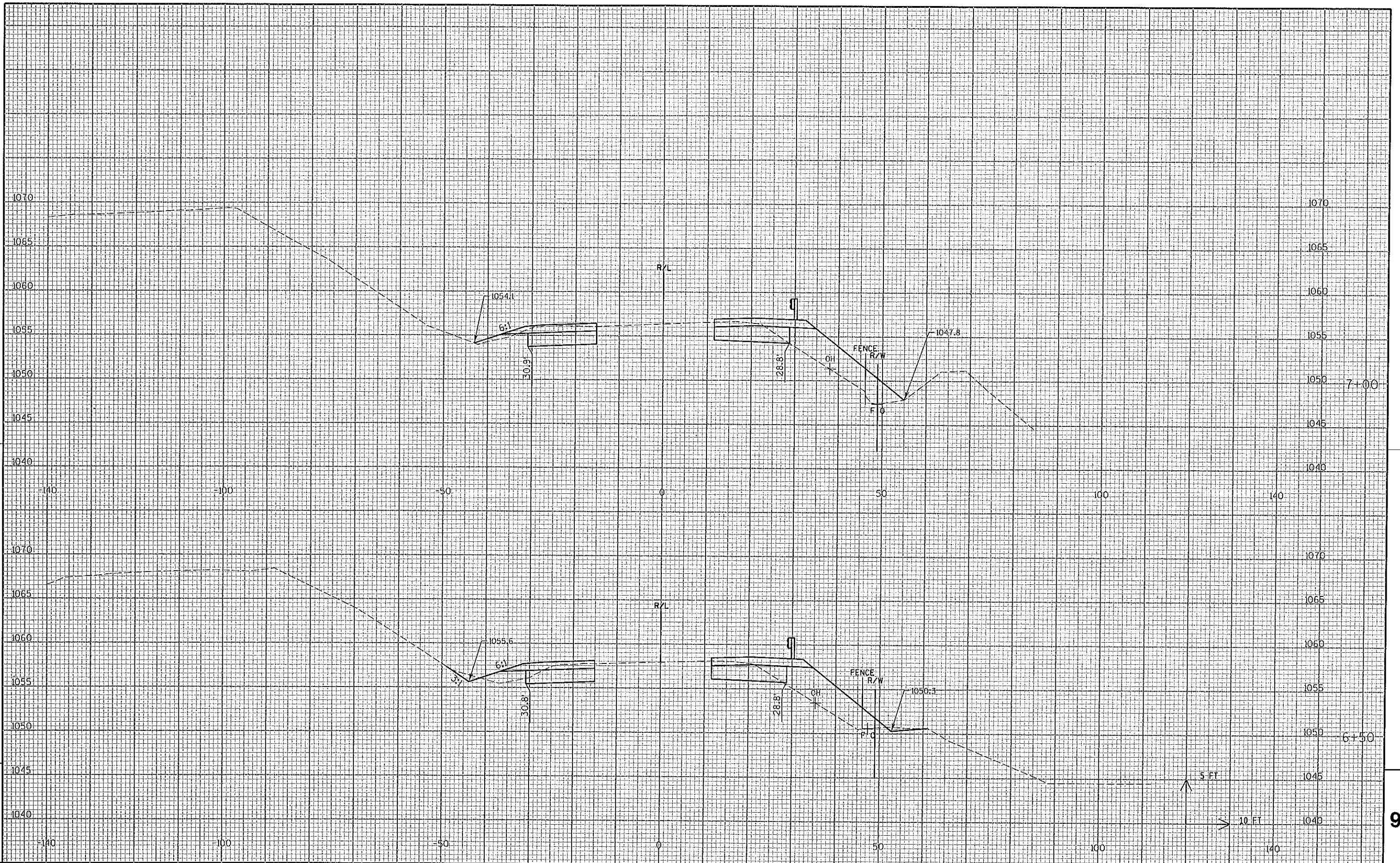
PLOT DATE : 2/28/2008

PLOT BY : b.j.w

PLOT NAME :

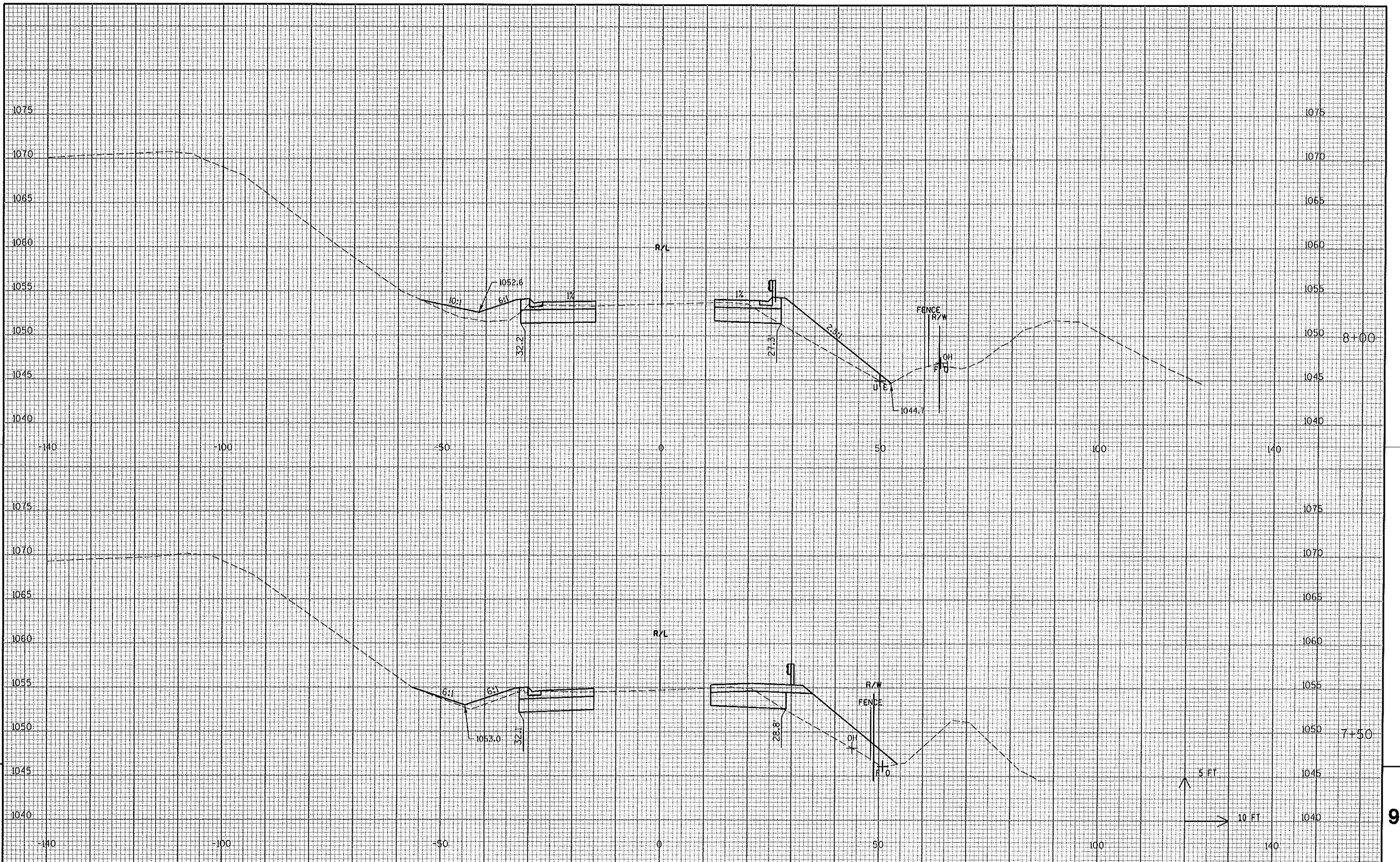
PLOT SCALE : 1:40

WISDOT/CADD SHEET 42



9

9



PROJECT NO: 5300-06-72	HWY: USH 12	COUNTY: DANE	CROSS SECTIONS: MINERAL POINT ROAD - EB EXIT RAMP	SHEET E
------------------------	-------------	--------------	---	----------------