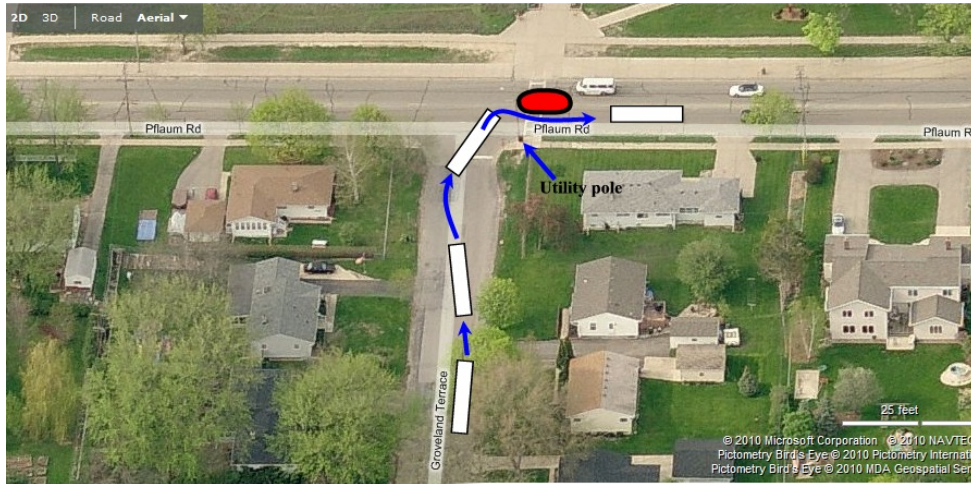


Proposal to Relocate Route 38 from Groveland Terrace

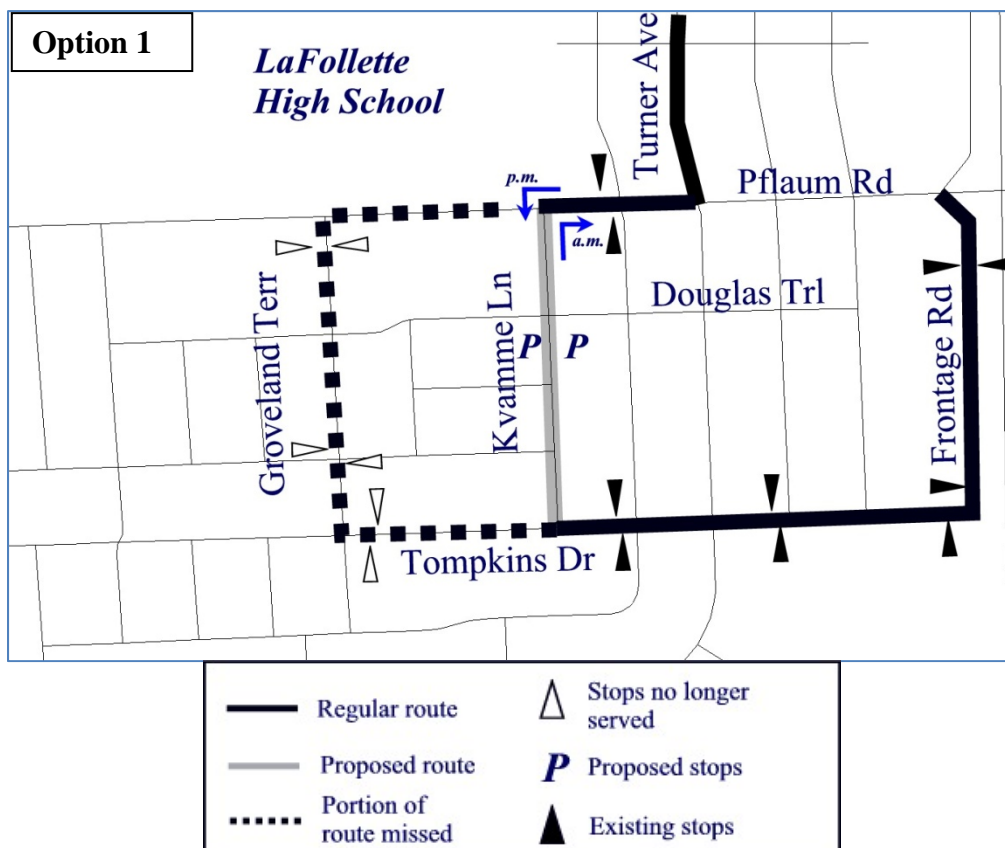
October 12, 2010

During the summer of 2010, a pedestrian refuge island was placed at the intersection of Pflaum Road and Groveland Terrace. This installation had the unfortunate side effect of rendering the right turn from northbound Groveland Terrace onto eastbound Pflaum Road very difficult for buses, even under the best conditions (see diagram below).

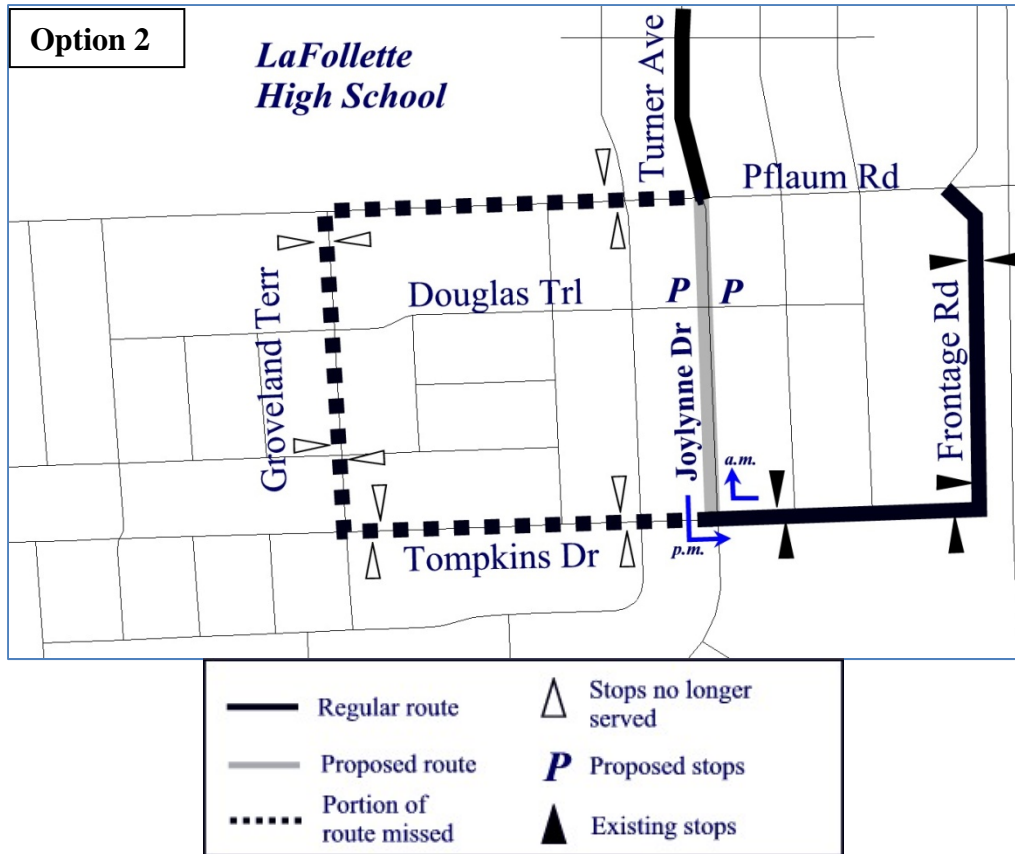


As a result, Metro proposes to relocate route 38—a commuter route that operates at ½ hour frequencies during the a.m. and p.m. peak periods on weekdays—in one of the following two ways:

Option 1: Operate one block east of Groveland Terrace on Kvamme Lane between Tompkins Drive and Pflaum Road



Option 2: After the reconstruction of Joylyne Lane in 2011, route 38 buses would operate on Joylyne Drive between Tompkins Drive and Pflaum Road. *NOTE: This would require an unsafe crossing by buses of both the westbound and eastbound lanes of traffic on Pflaum Road without the benefit of any traffic control.*



Route 38 currently operates eight trips on Groveland Terrace during the a.m. peak (between 5:22 a.m. and 8:31 a.m.), and eight trips during the p.m. peak (between 3:41 p.m. and 7:07 p.m.). Frequency is approximately 30 minutes.