


Salads


Cambria Caesar Salad 9 
parmesan | tomato | croutons

Southwestern Tortilla Salad 9
grilled chicken | lettuce | red onion
tomato | jack cheese | avocado
black beans | tortilla chips
lime vinaigrette | ranch dressing

Small Plates


Chicken Tenders 8
buttermilk ranch dipping sauce
spinach, cucumber + tomato salad
vinaigrette dressing

Tortilla Chips Trio 5 
tortilla chips | queso | salsa | guacamole

Spinach Artichoke Dip 7 
artichoke hearts | baby spinach
assorted cheeses

Desserts

Classic Cheesecake 8 
assorted toppings

Chocolate Cake 8 
chocolate cake | chocolate frosting dark
chocolate ganache

Large Plates

*burgers & sandwiches are served with choice of
potato salad, macaroni salad, caesar salad, or fresh fruit*

◦ Cambria American Angus Burger 11
american cheese | lettuce | tomato | pickle
onion | 1000 island

◦ Buckingham's Finest 12
bacon | cheddar cheese | coleslaw
bbq sauce

◦ You Blue It 12
lettuce | tomato | buffalo sauce
blue cheese | mayo

◦ Swiss Bliss 12
swiss cheese | mushrooms
caramelized onions


◦ Why the Chicken Crossed the Road 12
grilled chicken | buffalo sauce
blue cheese | lettuce | onion | tomato
ranch dressing

◦ The Walk-On 12
grilled ranch chicken | bacon | lettuce
tomato | cheddar cheese
black pepper mayo

◦ The Isthmus 12
grilled spicy honey mustard chicken
cheddar cheese | bacon

CAMBRIA®

 Gluten-Free

 Suitable for Vegetarians

◦ Whether dining out or preparing food at home, consuming raw or undercooked meats, poultry, seafood, shellfish, or eggs may increase your risk of foodborne illness.

CRAFT BEER

Rotating Seasonal *(ask your bartender for selections)*

- Two Women Lager** *New Glarus Brewing Co* 6
 pilsner style with floral noble hops and dry honeyed toast
 new glarus, wi abv: 5.0% ibu: 22
- Gumballhead Wheat Ale** *3 Floyds Brewing Co* 6
 sweet citrus blossom and clove spiked bubblegum
 with lively carbonation
 munster, in abv: 5.6% ibu: 35
- Spotted Cow Farmhouse Ale** *New Glarus Brewing Co* 6
 melon, rock candy and creamy sweet corn with a clove
 and butterscotch finish
 new glarus, wi abv: 4.8% ibu: 18
- Moon Man Pale Ale** *New Glarus Brewing Co* 6
 balanced juicy orange, herbal piney hops
 and nutty caramel malt
 new glarus, wi abv: 5.0% ibu: 38
- Lady Luck Imperial Red Ale** *Karben4 Brewing* 6
 tobacco and raisin followed by sweet toffee malt
 madison, wi abv: 7.5% ibu: 18
- Voodoo Ranger IPA** *New Belgium Brewing Co* 6
 juicy tropical fruit and piney citrus
 meet sweetened cereal grain
 fort collins, co abv: 7.0% ibu: 50

DOMESTIC BEER

- | | | | |
|-------------|---|----------------|---|
| Coors Light | 4 | Michelob Ultra | 4 |
| Bud Light | 4 | Stella Artois | 6 |
| Miller Lite | 4 | Corona Extra | 6 |

COCKTAILS

Cambria Margarita 8
 blanco tequila | triple sec | lime agave nectar

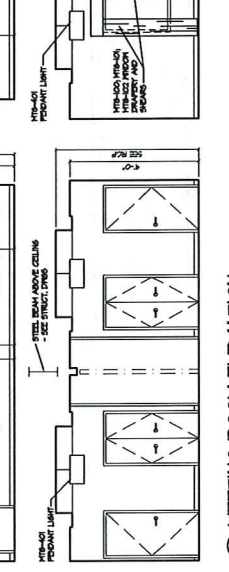
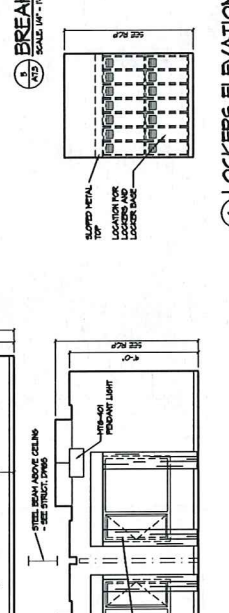
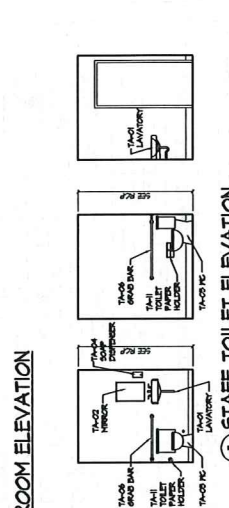
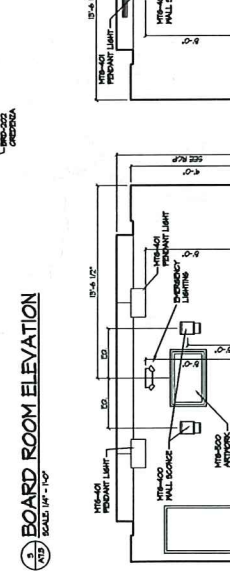
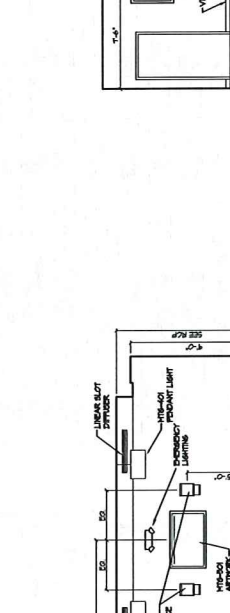
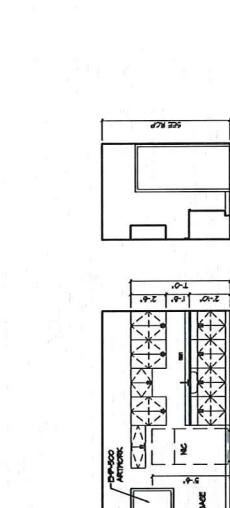
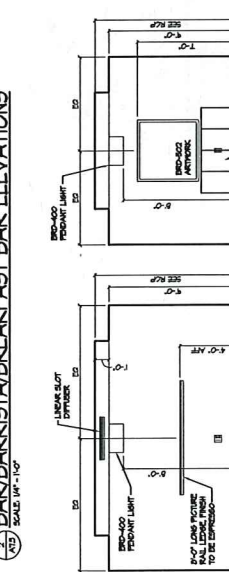
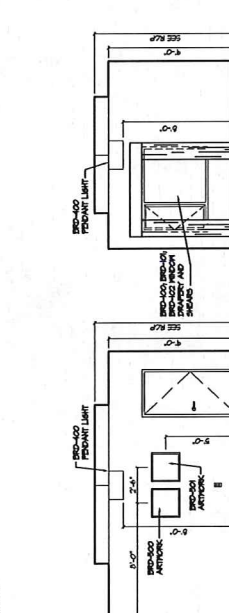
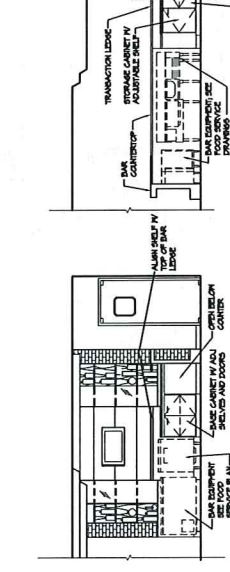
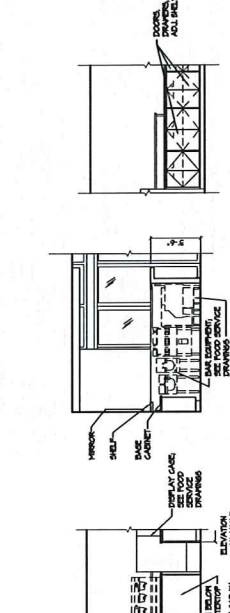
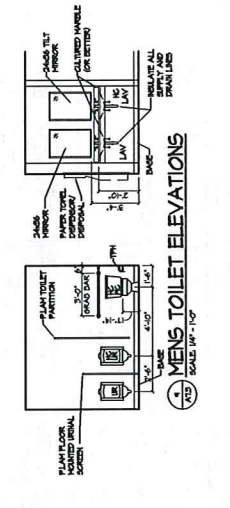
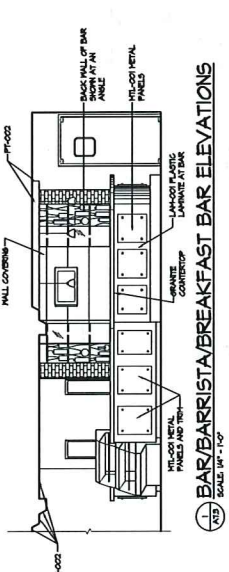
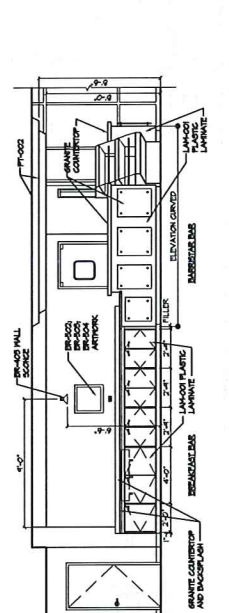
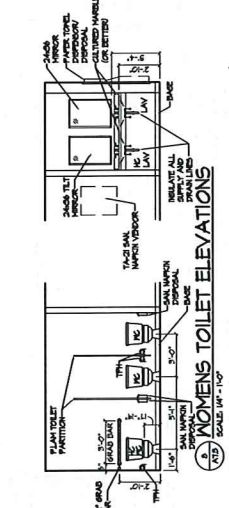
Whiskey a Go-Go 8
 whiskey | fernet branca | white crème de cacao
 cold brew coffee | whipped cream

Caribbean Café 8
 aged rum | coconut rum
 cold brew coffee
 macadamia nut syrup | heavy cream


Drink of the Day 8
 ask your server for selection

WINE

- | | |
|--|--------------|
| | <i>glass</i> |
| Little Black Dress Pinot Grigio California | 7 |
| Wollersheim Chardonnay Sauk City, WI | 7 |
| Wollersheim White Riesling Sauk City, WI | 7 |
| Wollersheim Blushing Rose Sauk City, WI | 7 |
| Wollersheim Pinot Noir Sauk City, WI | 7 |
| Wollersheim Sangiovese Sauk City, WI | 7 |
| Soverain Merlot Sonoma Co., CA | 7 |
| Storypoint Cabernet California | 7 |



© 2009 ERWIN ARCHITECTS, PLLC. ALL RIGHTS RESERVED.



 Ervins

 Architects-Planners

 8201 W. 45th

 Suite 150

 Wauwata, WI 53082

 (608) 244-8839

JOB NO. 05114

DATE: JUNE 30, 2006

REVISIONS:

 Δ AUGUST 7, 2006

 Δ DEC. 19, 2006

 Δ JUNE 12, 2008

 Δ JULY 29, 2008



ENLARGED PLAN - CONFERENCE & BACK OF HOTEL

 CAMBRIA SUITES

 A NEW HOTEL FOR

 EASTPARK BOULEVARD AND WEST TERRACE

 MADISON, WISCONSIN

SHEET

A5.3

© 2008 ERVINS ARCHITECTS-PLANNERS ALL RIGHTS RESERVED.

