

Project No. 0001
5/11/2011



Cherokee Park Playground - Option 2

Existing playground
to be removed
and regraded
by others

PROPOSED
PLAYGROUND
Finished play
surface 856.5
see table for subgrade

Elevation benchmark
Fire hydrant at east corner
Burning Wood & Arapahoe
Top nut = 861.52 ft

Concrete ramp 656.06

ARAPAHOE LN

BURNING WOOD

Cherokee Park
10278 Pine St
Wash DC 20015
800 331 1111

City of Madison
Department of Public Works
PARKS DIVISION

City-County Building, Suite 104
210 Martin Luther King, Jr. Blvd.
PO Box 2987
Madison, WI 53701-2987



Graphical Scale
0 30 ft



PROJECT:

**CHEROKEE PARK
PLAYGROUND**

*Cherokee Park
1000 Burning
Wood Way
Madison, WI 53704
(playground at
Burning Wood Way
& Arapahoe Ln)*

Although every effort has been made in preparing these plans and checking them for accuracy, the contractor and subcontractor must check all details and dimensions of their trade and be responsible for the same.

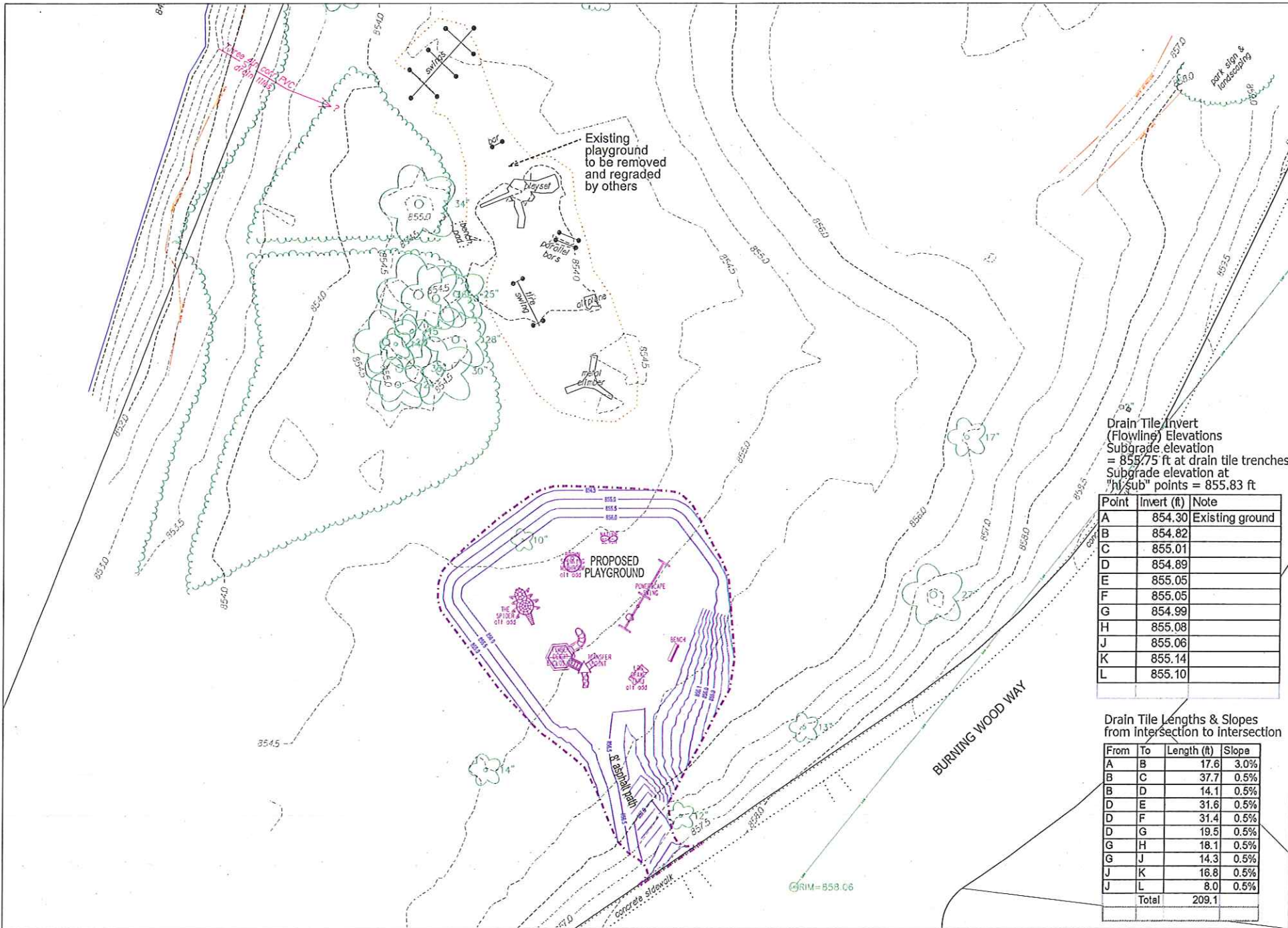
ITEM	DATE
Drawn by: DCR, checked by WAB	09.27.2011
Revised	11.29.2011
Revised	1.30.2012

PUBLIC WORKS PROJECT #:
53W1404 / Contract #6864

SHEET TITLE:
**PRELIMINARY
SITE PLAN -
Option 2**

SHEET NUMBER:

1



Drain Tile Invert
(Flowing) Elevations
Subgrade elevation
= 855.75 ft at drain tile trenches
Subgrade elevation at
"h/sub" points = 855.83 ft

Point	Invert (ft)	Note
A	854.30	Existing ground
B	854.82	
C	855.01	
D	854.89	
E	855.05	
F	855.05	
G	854.99	
H	855.08	
J	855.06	
K	855.14	
L	855.10	

Drain Tile Lengths & Slopes
from intersection to intersection

From	To	Length (ft)	Slope
A	B	17.6	3.0%
B	C	37.7	0.5%
B	D	14.1	0.5%
D	E	31.6	0.5%
D	F	31.4	0.5%
D	G	19.5	0.5%
G	H	18.1	0.5%
G	J	14.3	0.5%
J	K	16.8	0.5%
J	L	8.0	0.5%
Total		209.1	

Cherokee Park

Madison, Wisconsin



Cherokee Park

Madison, Wisconsin



Cherokee Park

Madison, Wisconsin

