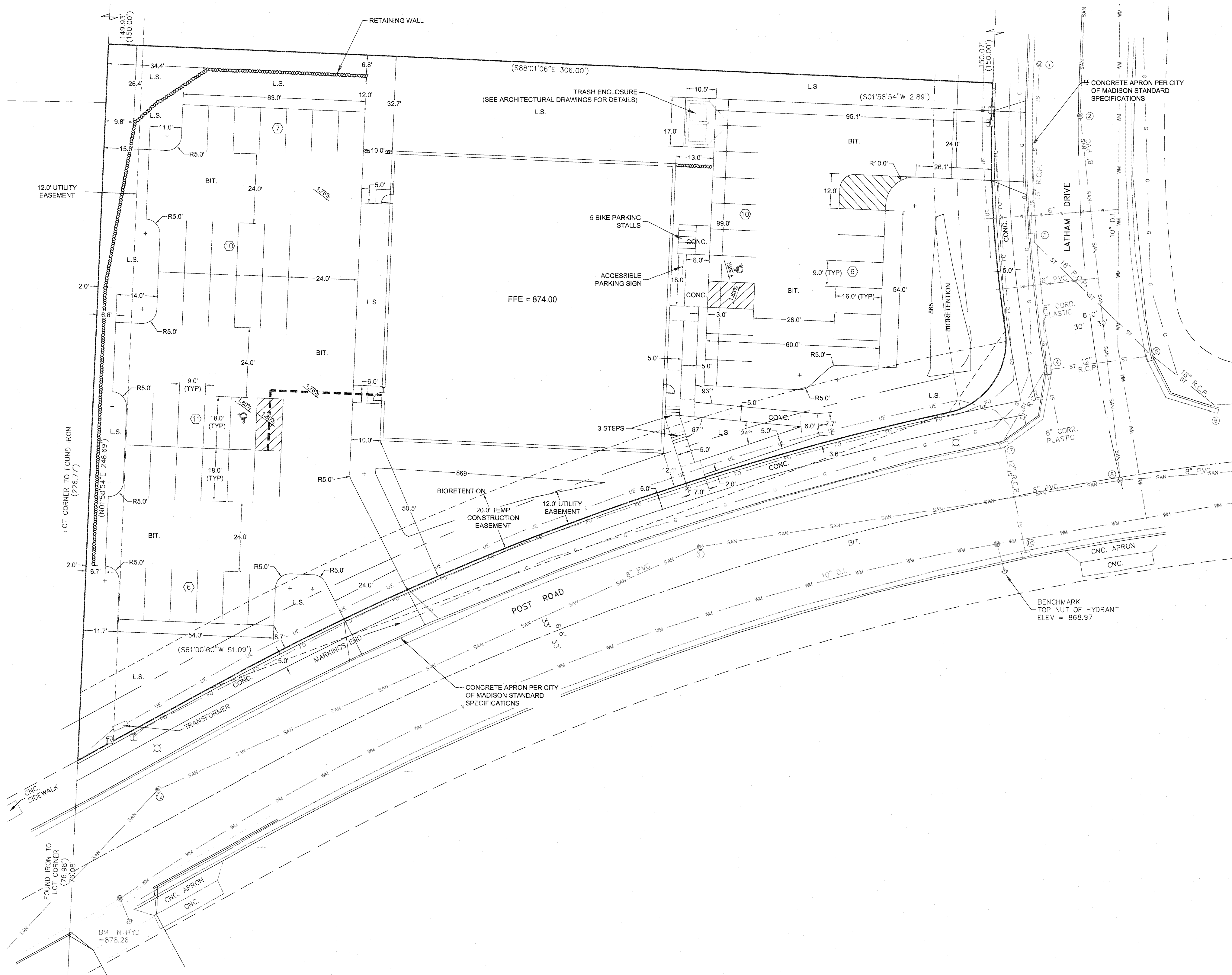
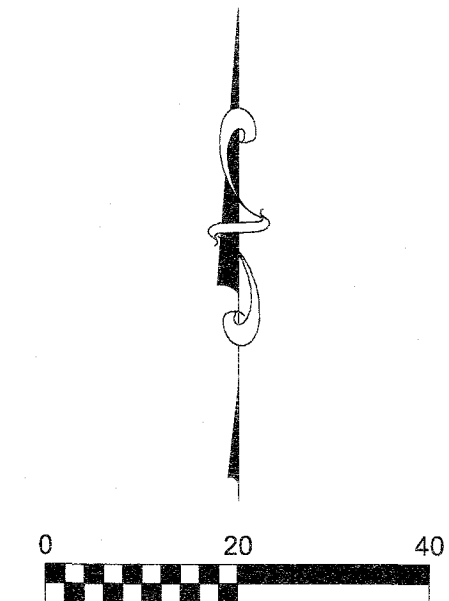


NOT FOR CONSTRUCTION



- LEGEND**
- ACCESSIBLE ROUTE
 - # PARKING STALL COUNT
 - - - PHASED CONSTRUCTION LINE
 - - - PROPERTY BOUNDARY
 - - - EXISTING SETBACK
 - - - SIGN
 - L.S. LANDSCAPED OR GRASS
 - BIT. BITUMINOUS PAVEMENT
 - CONC. CONCRETE SIDEWALK



- NOTE:**
- ALL CONCRETE CURBS ARE 18" IN WIDTH (EITHER ACCEPT OR REJECT) AND SHALL CONFORM TO THE CITY OF MADISON STANDARD SPECIFICATIONS.
 - PAVEMENT MARKINGS AND SIGNAGE PERTAINING TO ACCESSIBLE PARKING STALLS AND ROUTES SHALL CONFORM TO CURRENT ADA REGULATIONS.
 - ALL PAINT STRIPING SHALL HAVE A 4 INCH WIDTH.
 - PAVEMENT DESIGN SHALL BE PER THE RECOMMENDATION OF THE SOILS CONSULTANT.
 - TOTAL PARKING STALLS:
2 ACCESSIBLE
48 STANDARD

Burse
Surveying and Engineering, Inc.
2801 International Lane, Suite 101
Madison, WI 53704
Phone: 608-250-9265
Fax: 608-250-9266
e-mail: MBurse@BSE-INC.net
www.bursesurveying.com

APPROVALS	PROJECT NO.	DATE	BY
DESIGNED BY	PROJECT NO.	DATE	BY
DRAWN BY	PROJECT NO.	DATE	BY
CHECKED BY	PROJECT NO.	DATE	BY
APPROVED BY	PROJECT NO.	DATE	BY
DATE	PROJECT NO.	DATE	BY

Probation and Parole - New Facility
3318 Latham Drive
Madison, WI 53713

SULLIVAN DESIGN BUILD
1314 Emil Street
Madison, WI 53713

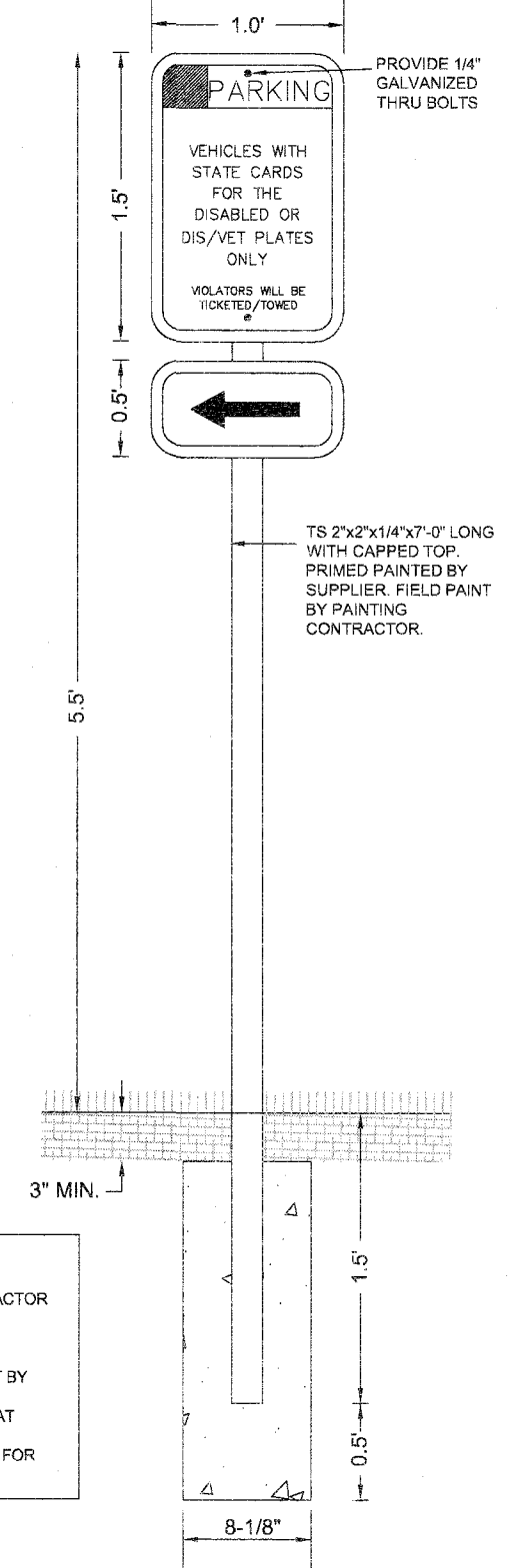
PROJECT #:	BSE2155
PLOT DATE:	09/21/2019
REVISION DATES:	
ISSUE DATES:	05/21/2019

CIVIL SITE PLAN

Burse
Surveying and Engineering, Inc.

DRAWING NUMBER
C300

WISCONSIN ACCESSIBLE PARKING SIGN



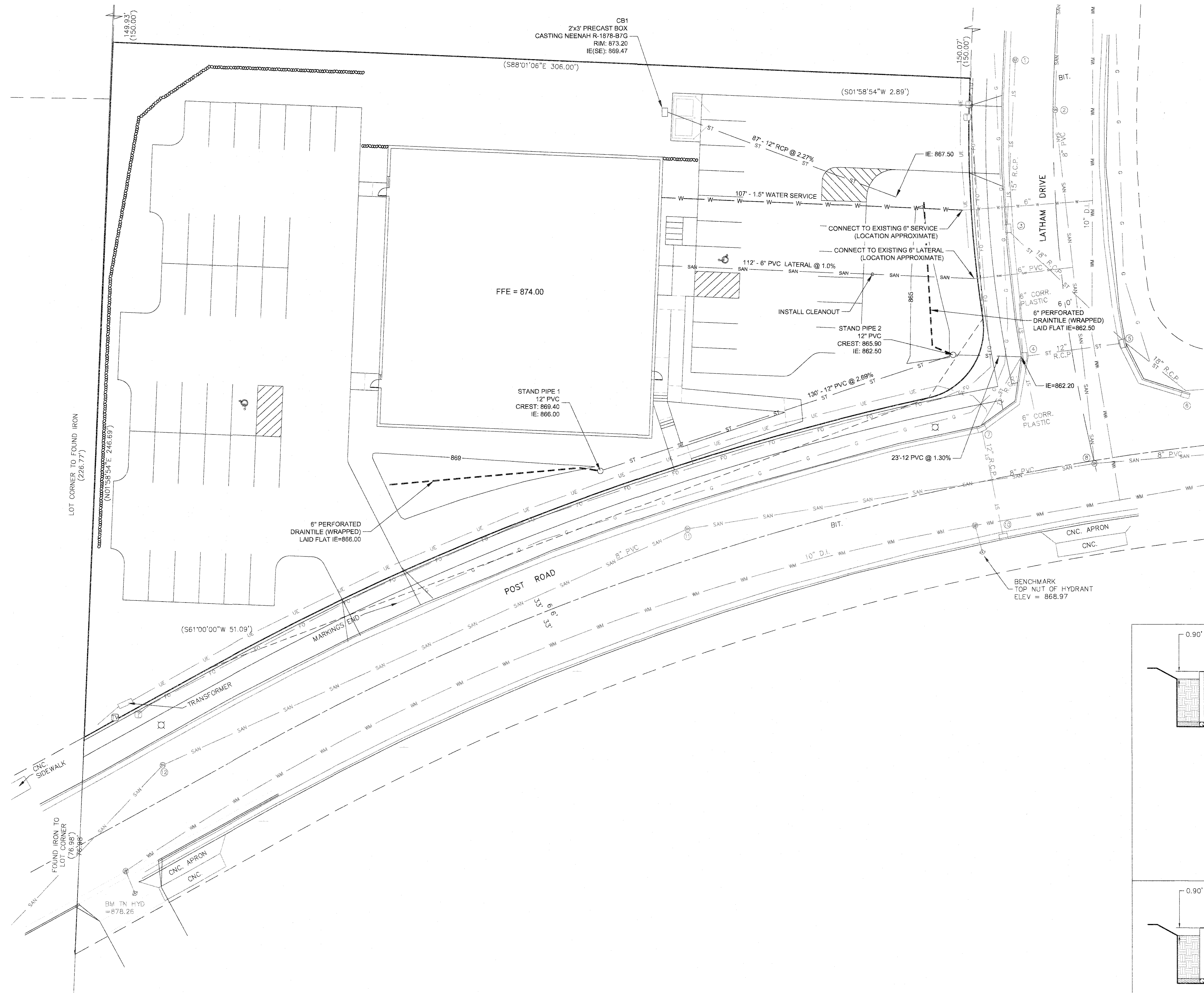
GENERAL NOTES:
EXCAVATION BY CONCRETE CONTRACTOR
POSTS SHALL BE SET BY CONCRETE CONTRACTOR & PROVIDED BY STEEL SUPPLIER
SIGN PROVIDED BY HARDWARE SUPPLIER & INSTALLED BY CARPENTER
Wipe clean excess concrete from post by concrete contractor
ARROW NOT REQUIRED IF SIGN IS LOCATED AT EVERY STALL
CARPENTER TO DRILL HOLES IN STEEL POST FOR SIGN ATTACHMENT

DIGGERS HOTLINE
Dial 811 or (800) 242-8511
www.DiggersHotline.com

Printed: May 21, 2019 - 11:59am Printed By: Peter

M:\BSE2155\dwg\Engineering\BSE2155-ENG 3.dwg

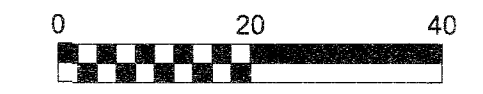
NOT FOR CONSTRUCTION



NOTES:

1. ALL PRIVATE UTILITIES (GAS, ELECTRIC, AND TELECOMMUNICATIONS) SERVING EXISTING BUILDINGS SCHEDULED FOR DEMOLITION TO BE ABANDONED OR REMOVED BY CORRESPONDING UTILITY COMPANY.
2. IT IS THE CONTRACTOR'S RESPONSIBILITY TO VERIFY THE LOCATION OF UNDERGROUND UTILITIES. UTILITIES WERE LOCATED BY OBSERVED EVIDENCE, MARKINGS PROVIDED BY DIGGER'S HOTLINE, AND RECORD DRAWINGS FROM THE CITY OF MADISON.
3. CONTRACTOR SHALL VERIFY THE SIZE, TYPE, SLOPE, AND INVERTS OF ALL EXISTING STORM AND SANITARY LATERALS CALLED OUT TO BE CONNECTED TO. CONTRACTOR SHALL SUBMIT THE INFORMATION ON THE PIPES TO THE CITY INSPECTOR AND PROJECT CIVIL ENGINEER.
4. ANY SIDEWALK, CURB, OR OTHER PUBLIC PROPERTY DAMAGED AS PART OF THE CONSTRUCTION OF THE UTILITIES AND BUILDING SHALL BE REPLACED IN-KIND PER THE CITY OF MADISON'S STANDARD SPECIFICATION.
5. THE RIGHT-OF-WAY IS THE SOLE JURISDICTION OF THE CITY OF MADISON AND IS SUBJECT TO CHANGE AT ANY TIME PER THE RECOMMENDATION/PLAN OF TRAFFIC ENGINEERING AND CITY ENGINEERING DEPARTMENTS.
6. SANITARY AND WATER UTILITIES SHALL BE KEPT A MINIMUM OF 4' APART HORIZONTALLY. CROSSING OF WATER OVER SANITARY WILL KEEP A MINIMUM OF 6" SEPARATION FROM THE BOTTOM OF WATER SERVICE TO TOP OF THE SANITARY LATERAL.
7. ALL CONNECTIONS TO CITY OF MADISON INFRASTRUCTURE TO BE PERFORMED IN COMPLIANCE WITH THE MOST CURRENT VERSION OF THE CITY'S STANDARD SPECIFICATIONS AND DETAILS.

Burse
Surveying and Engineering, Inc.
2801 International Lane, Suite 101
Madison, WI 53704
Phone: 608-250-9263
Fax: 608-250-9266
e-mail: Mburse@BSE-INC.net
www.burseurveyengr.com



APPROVALS	PROJECT ENG	PDF	DESIGNED BY	PDF	DESIGNED BY	PDF	DESIGNED BY	PDF	DESIGNED BY

Probation and Parole - New Facility
3318 Latham Drive
Madison, WI 53713
SULLIVAN DESIGN BUILD
1314 Emil Street
Madison, WI 53713

PROJECT #: BSE2155
PLOT DATE: 05/21/2019

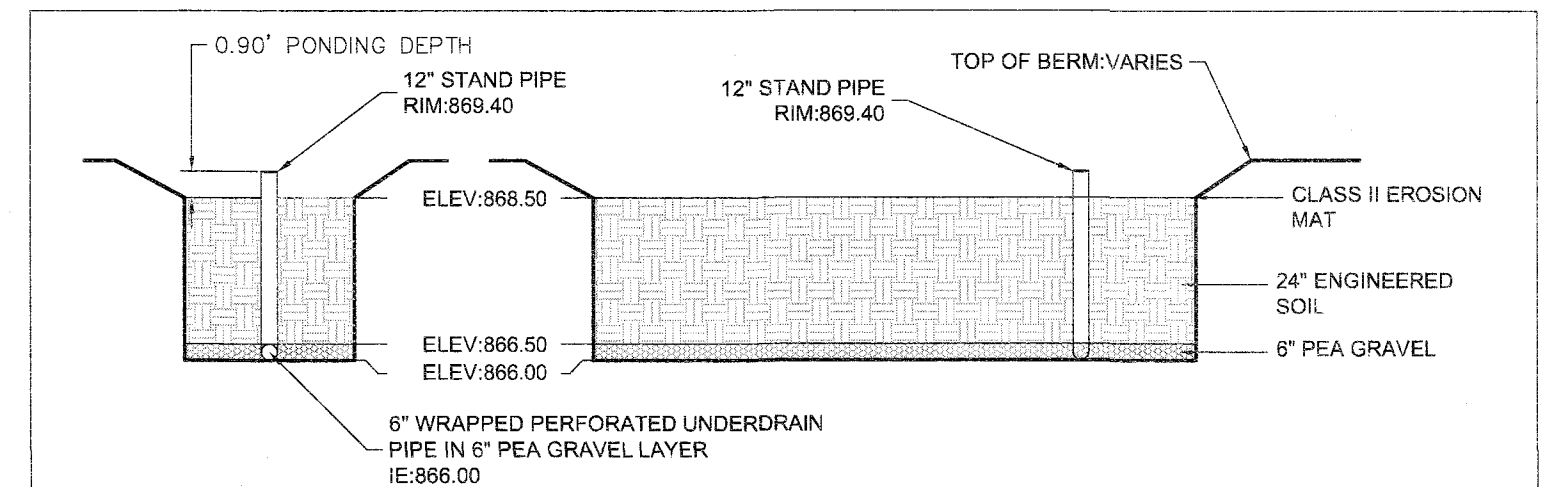
REVISION DATES:

ISSUE DATES: 05/21/2019

SITE UTILITY PLAN

Burse
Surveying and Engineering, Inc.
This document contains confidential or proprietary information of Burse Surveying and Engineering, Inc. Neither the document nor the information herein is to be reproduced, distributed, used or disclosed, either in whole or in part, except as specifically authorized by Burse Surveying and Engineering, Inc.

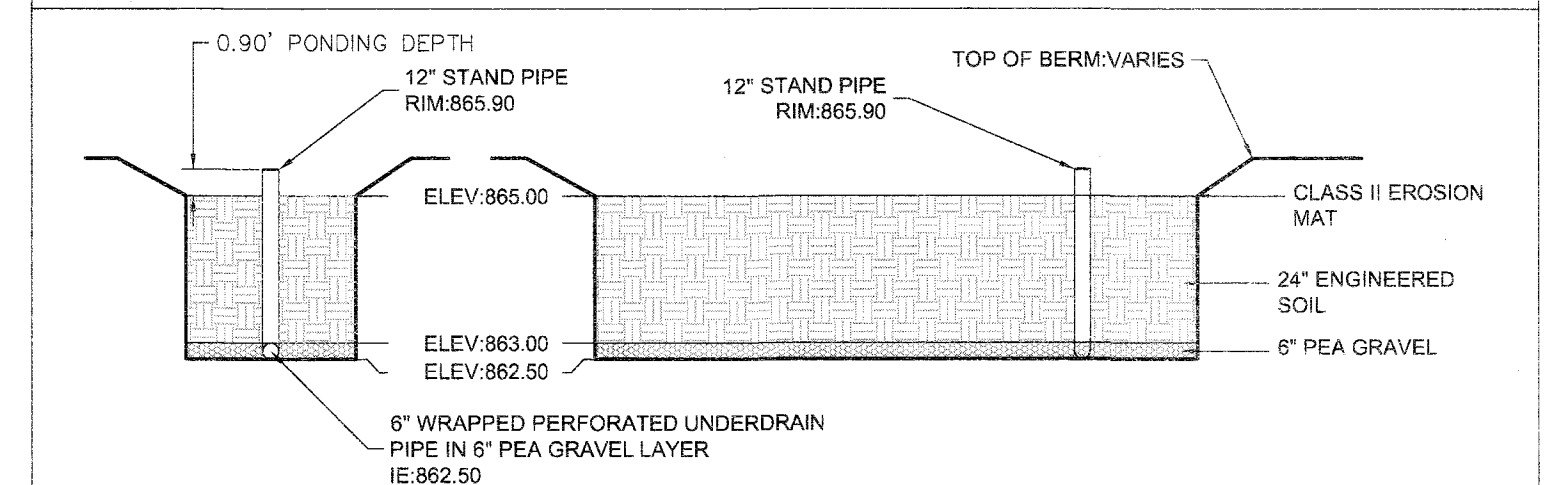
DRAWING NUMBER
C500



ENGINEERED SOIL SHALL CONSIST OF THE FOLLOWING:
70% SILICA SAND; 30% COMPOST W/ PH 5.5-6.5
COMPOST SHALL MEET WDNR SPECIFICATION S100.
(SEE DNR TECHNICAL STANDARD 1004)

BASIN SHALL BE VEGETATED IN NATIVE PRAIRIE SPECIES, SALT TOLERANT, ABLE TO WITHSTAND PERIODS OF SATURATION, BE OF ROOT-STOCK (NOT SEED) AND BE SPACED 1' ON-CENTER.

WEST BIORETENTION DETAIL



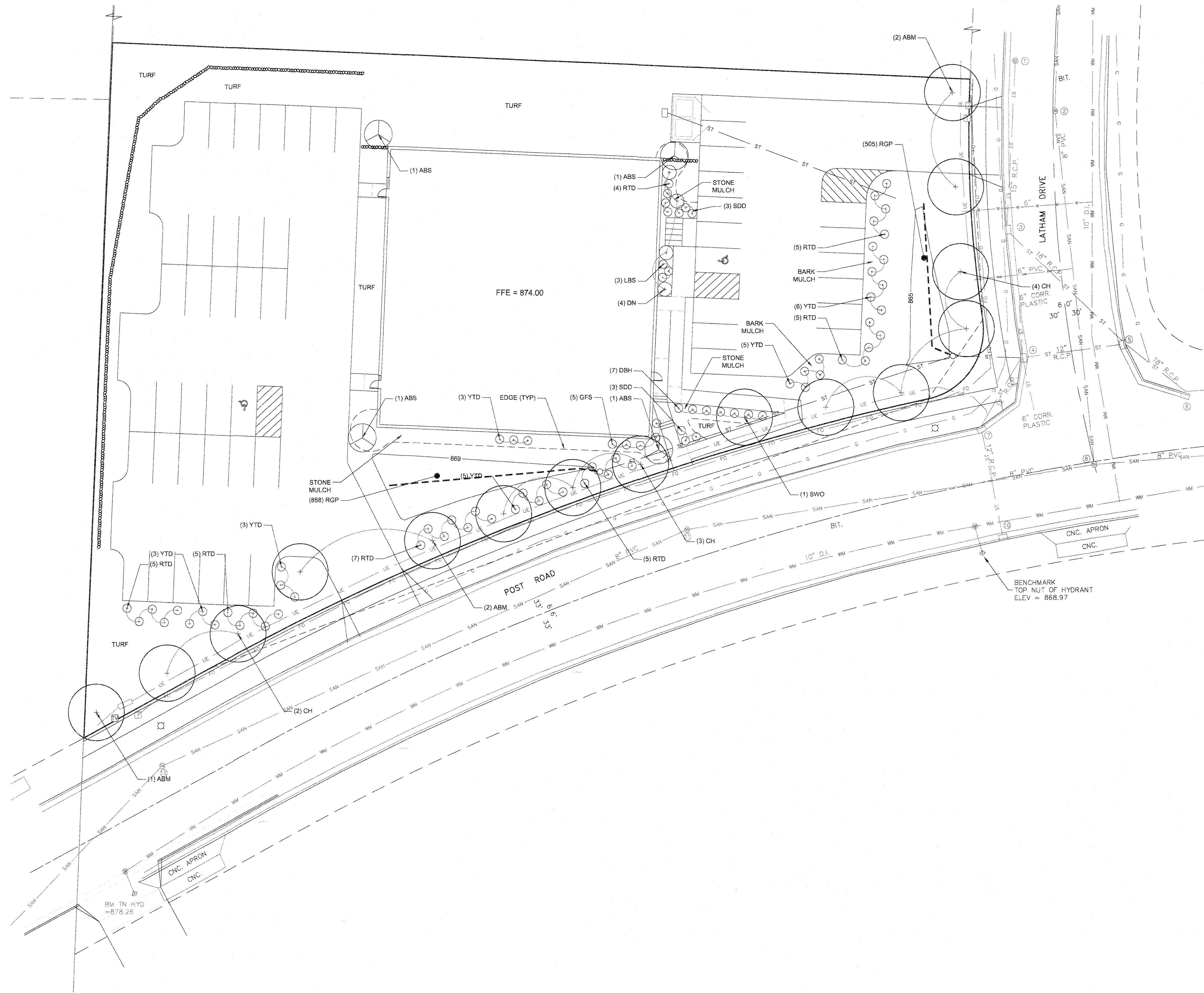
ENGINEERED SOIL SHALL CONSIST OF THE FOLLOWING:
70% SILICA SAND; 30% COMPOST W/ PH 5.5-6.5
COMPOST SHALL MEET WDNR SPECIFICATION S100.
(SEE DNR TECHNICAL STANDARD 1004)

BASIN SHALL BE VEGETATED IN NATIVE PRAIRIE SPECIES, SALT TOLERANT, ABLE TO WITHSTAND PERIODS OF SATURATION, BE OF ROOT-STOCK (NOT SEED) AND BE SPACED 1' ON-CENTER.

EAST BIORETENTION DETAIL

DIGGERS HOTLINE
Dial 811 or (800) 242-8511
www.DiggersHotline.com

NOT FOR CONSTRUCTION



NOTES:

- TURF AREAS SHALL RECEIVE A MINIMUM OF 4" OF TOPSOIL, SHALL BE SEEDED WITH PREMIUM NO-MOW SEED MIX, FERTILIZED, AND MULCHED WITH STRAW OR STRAW MAT MULCH.
- TURF AREAS IN DRAINAGE SWALES AND ON SLOPES GREATER THAN 3:1 SHALL BE PROTECTED WITH EROSION CONTROL FABRIC.
- FOUNDATION PLANTING BEDS TO BE MULCHED WITH #2 WASHED STONE SPREAD TO A DEPTH OF 3" OVER WEED BARRIER FABRIC.
- DESIGNATED PLANTING BEDS TO BE MULCHED WITH SHREDDED HARDWOOD BARK TO A DEPTH OF 3".
- INDIVIDUAL TREES AND SHRUB GROUPINGS IN LAWN AREAS TO RECEIVE SHREDDED HARDWOOD BARK MULCH PLANTINGS (4" DIAMETER) SPREAD TO A DEPTH OF 3".
- DESIGNATED PLANTING BEDS TO BE SEPARATED FROM LAWN AREAS WITH A 9" BLACK VINYL EDGE.
- RAIN GARDEN TO RECEIVE BARK OR COCOA MAT MULCH PER WDR SPECIFICATIONS.
- RAIN GARDEN PLANTS (RGP) TO BE INSTALLED 12" ON CENTER.
- RAIN GARDEN TO BE CONSTRUCTED PER WDR SPECIFICATIONS.
- OWNER WILL BE RESPONSIBLE FOR LANDSCAPE MAINTENANCE AFTER COMPLETION AND ACCEPTANCE OF THE PROJECT.

LANDSCAPE WORKSHEET

Zoning Classification:

Landscaping Points Required

Developed Area =	20,968 SF
Landscaping Points: 20,968/100 =	210 points
Total Landscaping Points Required	210 points

Landscaping Points Supplied

Existing canopy trees - 0 @ 35 =	0 points
Proposed canopy trees - 15 @ 35 =	525 points
Existing evergreen trees - 0 @ 35 =	0 points
Proposed evergreen trees - 0 @ 35 =	0 points
Existing ornamental trees - 0 @ 15 =	0 points
Proposed ornamental trees - 4 @ 15 =	60 points
Proposed upright evergreen shrubs - 0 @ 10 =	0 points
Existing deciduous shrubs - 0 @ 3 =	0 points
Proposed deciduous shrubs - 77 @ 3 =	231 points
Existing evergreen shrubs - 0 @ 4 =	0 points
Proposed evergreen shrubs - 6 @ 4 =	24 points
Existing perennials & grasses 0 @ 2 =	0 points
Proposed perennials & grasses 9 @ 2 =	18 points
Total landscaping points supplied =	894 points

Lot Frontage Landscaping Required
(Section 26.142(5) Development Frontage Landscaping)

*One (1) over-story deciduous tree and five (5) shrubs shall be planted for each thirty (30) lineal feet of lot frontage. Two (2) ornamental trees or two (2) evergreen trees may be used in place of one (1) over-story deciduous tree.

Post Road & Latham Road = 449 LF

Over story trees required (279/30) =	14.9	15 trees
Shrubs required (279/30) x 5 =	74.8	75 shrubs
Over story trees supplied		15 trees
Ornamental/Evergreen trees supplied		9 trees
Shrubs supplied		75 shrubs

PLANT LIST

KEY	QUAN	SIZE	COMMON NAME	ROOT
Canopy Trees				
ABM	5	2 1/2"	Autumn Blaze Maple	BB
CH	9	2 1/2"	Hackberry	BB
SWO	1	2 1/2"	Swamp White Oak	BB
Ornamental Trees				
ABS	4	4"	Autumn Brilliance Serviceberry	BB
Deciduous Shrubs				
DBH	7	18"	Dwarf Bunch HoneySuckle	Pot
DN	4	24"	Diablo Ninebark	Pot
GFS	5	18"	Gold Flame Spiraea	Pot
RTD	36	24"	Bailey's Red Twig Dogwood	Pot
YTD	25	24"	Yellow Twig Dogwood	Pot
Perennials				
LBS	3	1 G	Little Bluestem Grass	Con
SDD	6	1 G	Stella de Oro Day Lily	Con
Bio-retention Plantings				
RGP	1,373	2 1/2"	(Planted 12" on center)	plug
Common Blue Star Bottle Gentian Obedient Plant Columbine Swinggrass Black Eyed Susan Wild Iris Swamp Milkweed White Turtlehead Carnival Flower Turk's Cap Lily Little Bluestem Canada Wild Rye Nodding Onion				

Burse
Surveying and Engineering, Inc.
2801 International Lane, Suite 101
Madison, WI 53704
Phone: 608-250-9268
Fax: 608-250-9266
e-mail: Mburse@BSE-INC.net
www.bursesurveying.com

APPROVALS	PROJECT NO.	DATE
DESIGNED BY	DRAWN BY	CHECKED BY
SCALE	DATE	DATE

Probation and Parole - New Facility
3318 Latham Drive
Madison, WI 53713
SULLIVAN DESIGN BUILD
1314 Emil Street
Madison, WI 53713

PROJECT #: BSE2155
PLOT DATE: 05/21/2019

REVISION DATES:

ISSUE DATES: 05/21/2019

LANDSCAPE PLAN

Burse
Surveying and Engineering, Inc.
This document contains confidential or proprietary information of Burse Surveying and Engineering, Inc. Neither the document nor the information herein is to be reproduced, distributed, used or disclosed, either in whole or in part, except as specifically authorized by Burse Surveying and Engineering, Inc.

DRAWING NUMBER
L100

DIGGERS HOTLINE
Dial 811 or (800) 242-8511
www.DiggersHotline.com