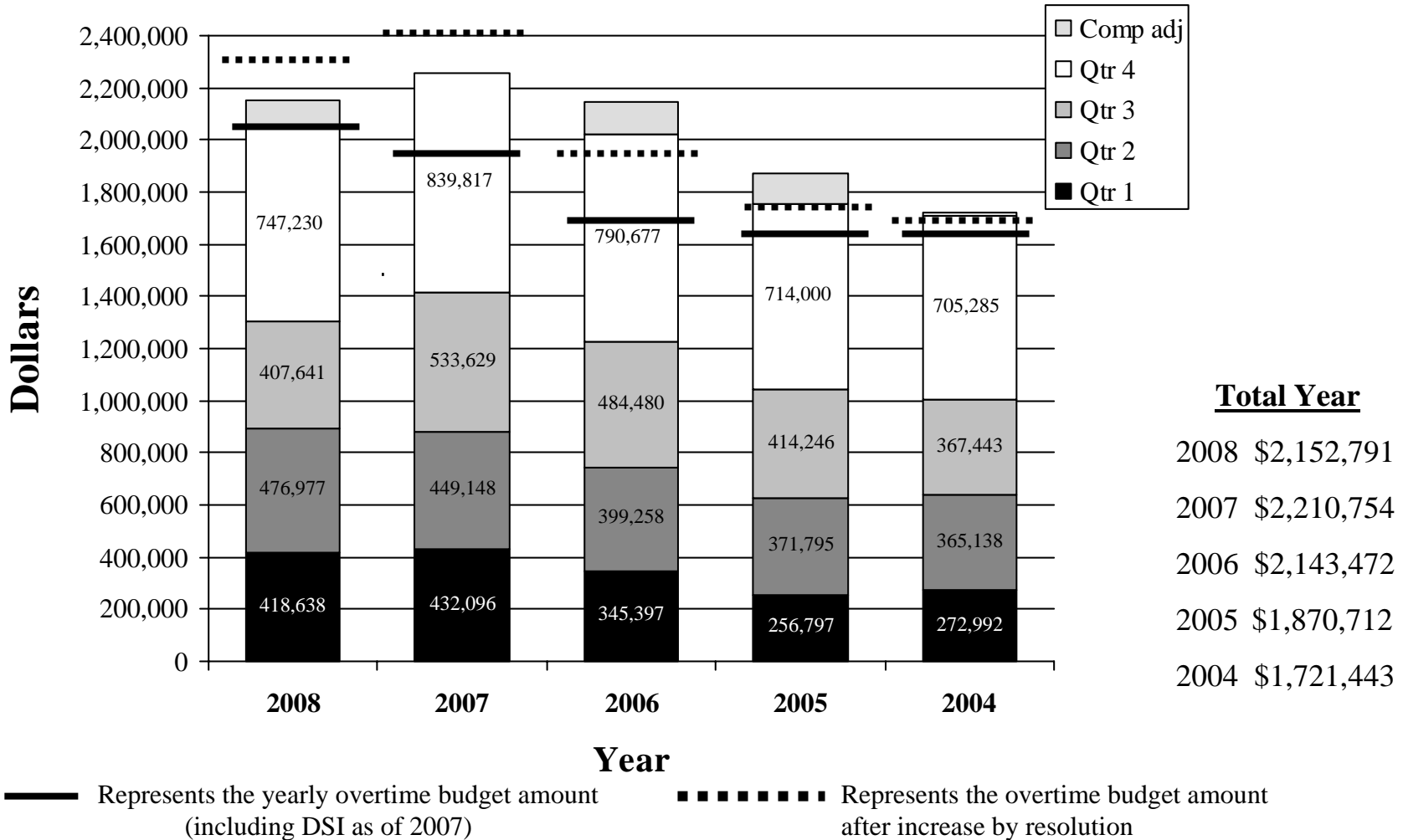
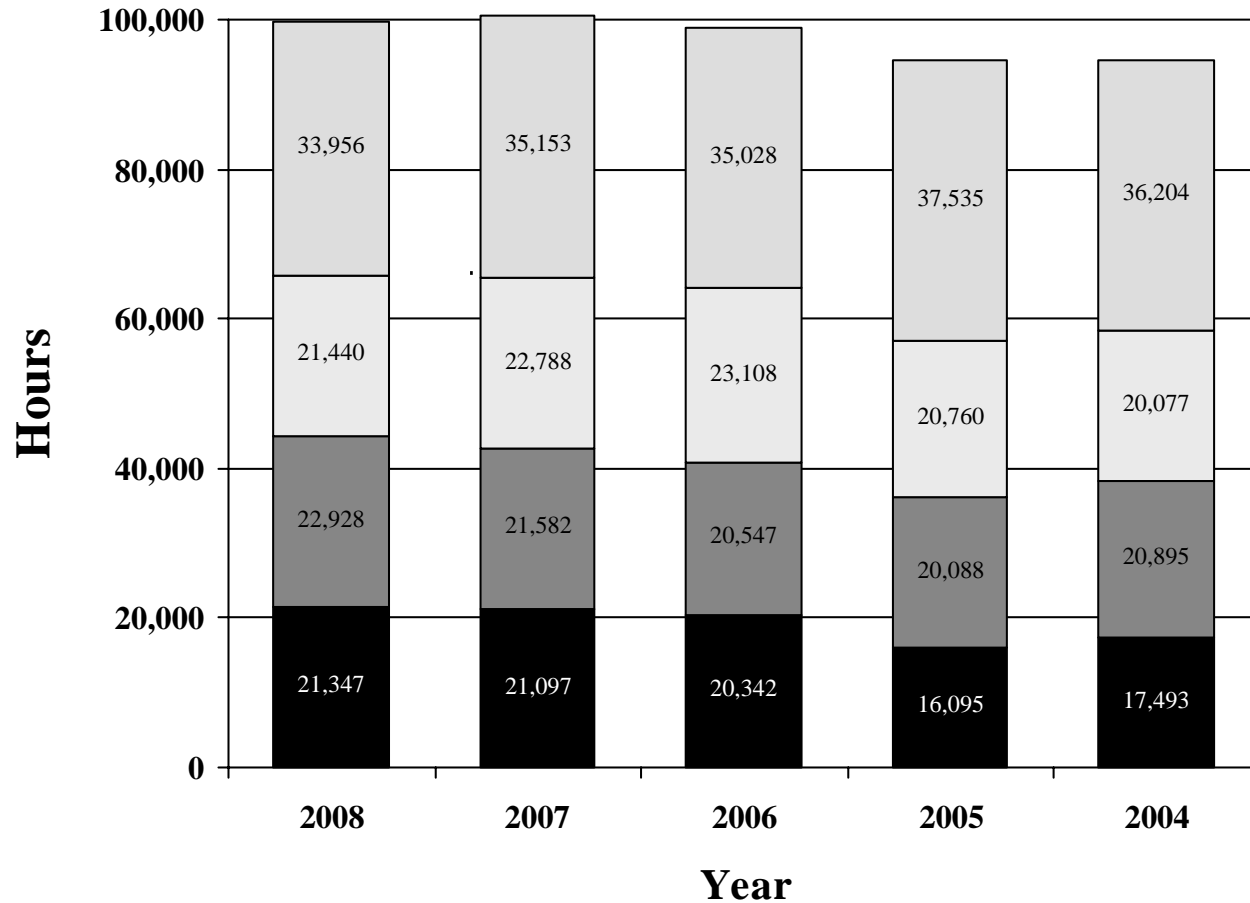


Comparison of Overtime Expenses 2008 - 2004

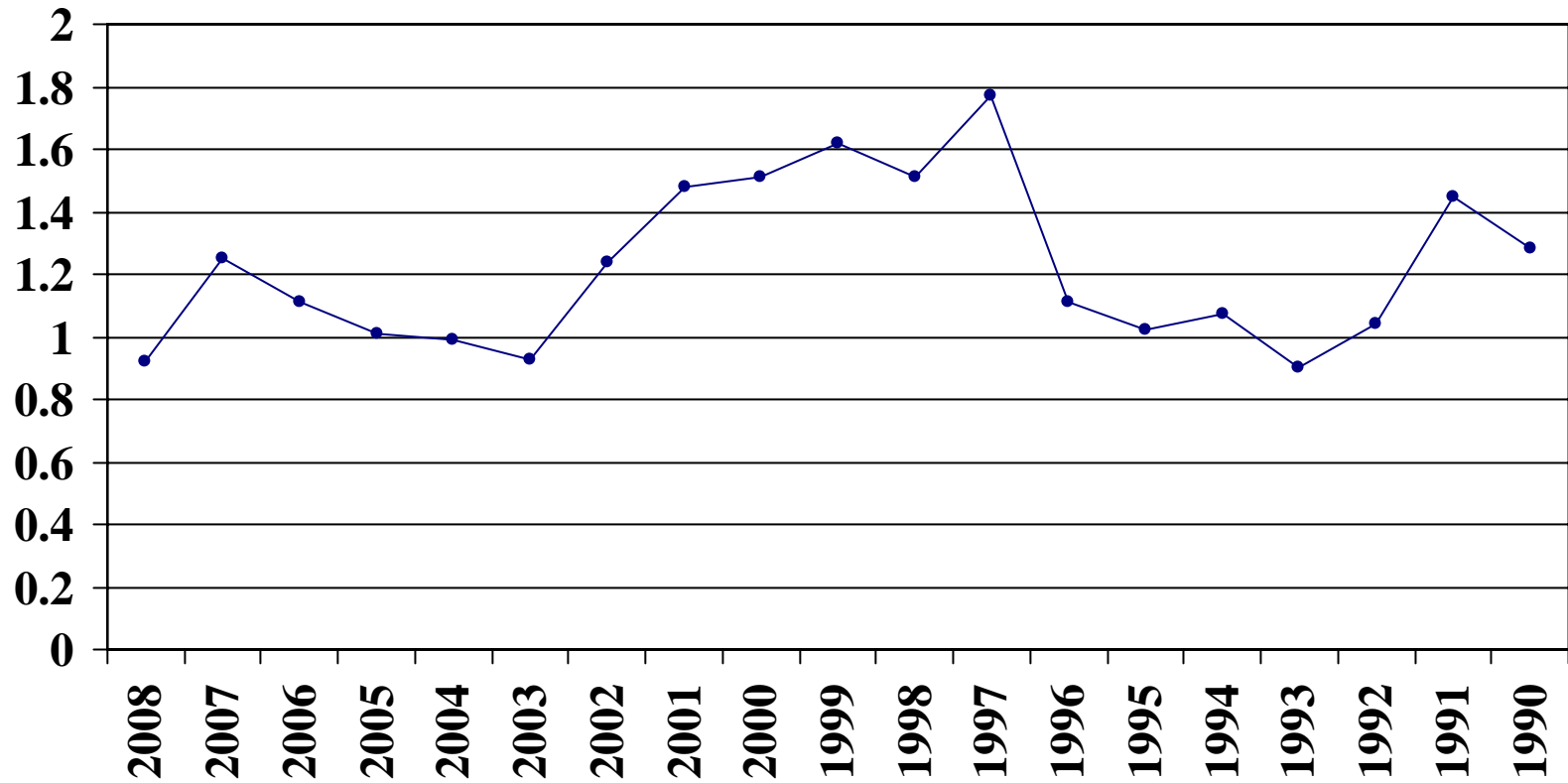


Comparison of Overtime Hours by Quarter 2008 - 2004



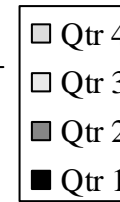
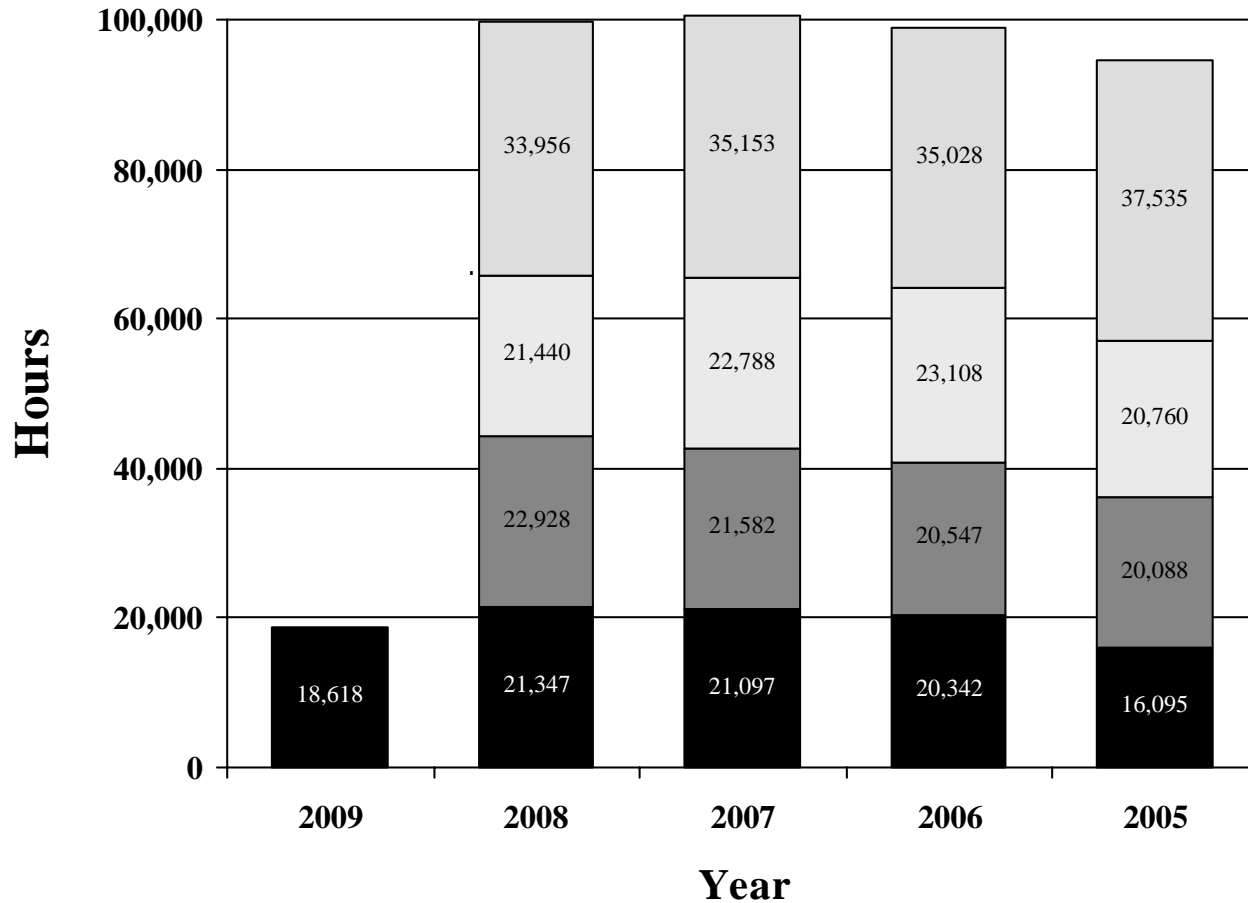
Total Year	
2008	99,671
2007	100,620
2006	99,024
2005	94,478
2004	94,669

Pay to Time Ratio 2008-1990



Comparison of Overtime Hours by Quarter

1st Quarter 2009 - 2005



	<u>Total Year</u>	<u>QTR 1</u>
2009		18,618
2008	99,671	21,347
2007	100,620	21,097
2006	99,024	20,342
2005	94,478	16,095