

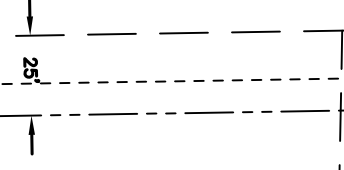
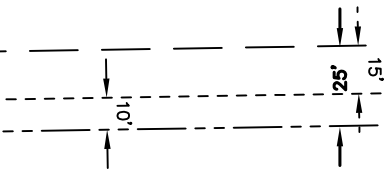
# EXHIBIT "C"

HOEPKER ROAD

PARTIAL RELEASE OF PUBLIC UTILITY EASEMENTS

33'

62'



59

58

WAY  
WIDTH  
VARIES

8 0'

10'

10'

Portions of  
Public Utility  
Easements to  
be Released

The Center For Industry & Commerce

VACATED  
GRAASKAMP

The Center For Industry & Commerce

60

57

6 6'

6 6'

JOHN WALL DRIVE

PREVIOUSLY  
VACATED  
GRAASKAMP  
WAY  
RES-17-00047  
DOC 5304795