



222 West Washington Ave.
Suite 310
Madison, WI 53703
ph: 608.268.1499
fax: 608.268.1498
www.destreearchitects.com

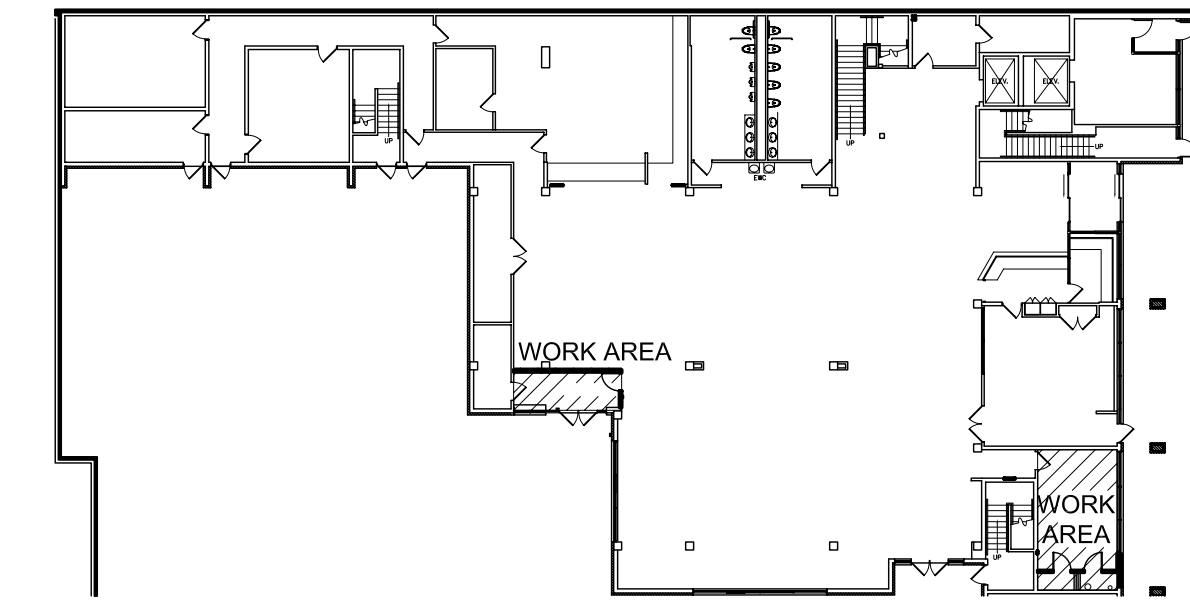
DESTREE DESIGN ARCHITECTS HOLDS ALL RIGHTS INCLUDING THE COPYRIGHT OF THIS DOCUMENT AS WELL AS THE CONCEPTS AND DESIGN INCORPORATED HEREIN AS AN INSTRUMENT OF SERVICE. AS PROPERTY OF DESTREE DESIGN ARCHITECTS IT IS NOT TO BE COPIED, DISTRIBUTED, OR USED IN WHOLE OR PART WITHOUT THE EXPRESS WRITTEN CONSENT OF DESTREE DESIGN ARCHITECTS.

JDR
ENGINEERING, INC.

**MADISON SENIOR CENTER
RENOVATION**
330 W MIFFLIN ST.
MADISON, WI 53703

Record Set Drawings

NOTE: AREAS OF ARCHITECTURAL MODIFICATIONS.



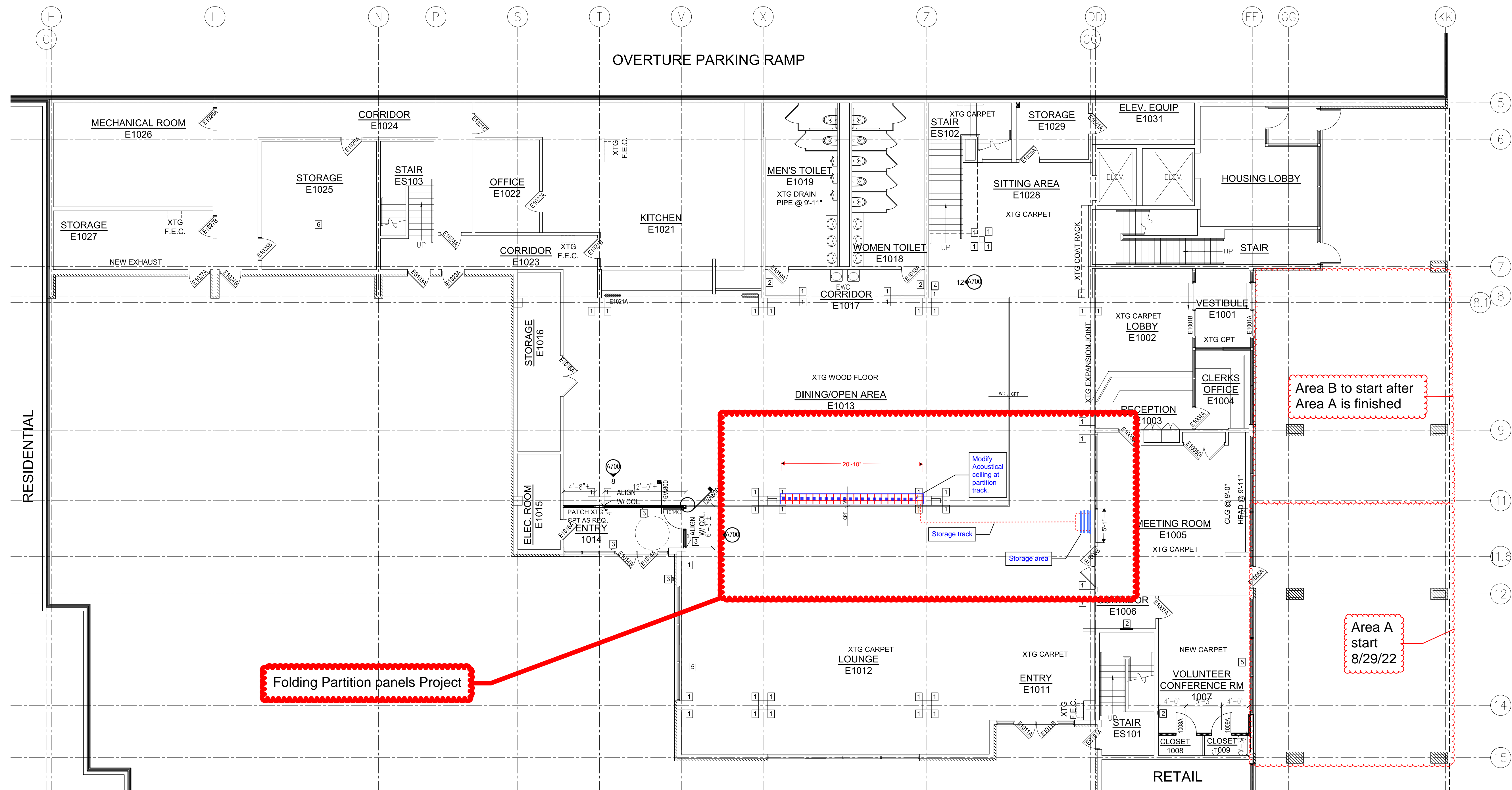
2 FIRST FLOOR KEY PLAN
1/32" = 1'-0"

GENERAL NOTES

1. ALL NEW WALL PARTITIONS TO BE TYPE P-1 UNLESS OTHERWISE NOTED. SEE 13/A800 FOR ADDITIONAL INFORMATION.
2. ENTRY 1014 TO BE ADD ALTERNATE #1.
3. ALL ABANDONED M.E.P. PENETRATIONS THROUGH THE FLOOR TO BE TEMPORARILY FORMED WITH FIRE TREATED WOOD AND GROUTED SOLID TO RE-ESTABLISH THE FIRE RATING AT THE FLOORWALL.
4. XTG F.E.C. IN AREAS OF WORK TO BE LOWERED TO ADA HEIGHT. CENTER OF HANDLE TO BE LOCATED AT 36" A.F.F. FOR CABINETS, 48" TO TOP OF HANDLE FOR EXTINGUISHERS, PATCH GWB AS REQ.
5. G.C. TO PROVIDE ALL REQUIRED METAL ACCESS PANELS. PROVIDE FIRE RATED PANELS AS REQUIRED.

KEYNOTES

- 1 CORNER GUARD, COLOR TO MATCH WALL, ARCHITECT TO APPROVE COLOR PRIOR TO INSTALL.
- 2 PATCH WALL AT DEMO OR DAMAGED WALLS
- 3 PUSH BUTTON POWER DOOR OPERATOR, WALL MOUNT AT 28" +/- A.F.F.
- 4 TACKABLE DISPLAY WALL, SEE ELEVATIONS
- 5 PATCH FLOOR/WALL AS REQ. SEE M101, P100, P101 FOR ADDITIONAL INFORMATION.
- 6 HVAC UNIT SUPPORT STAND, SEE 6/A801, 7/A801 & M101 FOR ADDITIONAL INFORMATION. UNIT HEIGHT TO BE AS CLOSE TO CEILING AS POSSIBLE, COORDINATE LOCATION W/ EXISTING SHELVING/LIGHTINGS, VERIFY W/ ARCHITECT PRIOR TO INSTALL.
- 7 INSTALL ENCLOSURE OVER EXISTING HUBDRAIN W/ ACCESS PANEL



1 FIRST FLOOR PLAN
1/8" = 1'-0"

Folding Partition panels Project

Area B to start after Area A is finished

Area A start 8/29/22

ISSUANCES:

CD'S	12.23.08
RD SET	08.16.09

PROJECT:

NUMBER:	080514.00
DATE:	12.23.08
REV:	9.29.22

SHEET:

A100

Record Set Drawings

DESTREE DESIGN
ARCHITECTS

222 West Washington Ave.
Suite 310
Madison, WI 53703
ph: 608.268.1499
fax: 608.268.1498
www.destreearchitects.com

DESTREE DESIGN ARCHITECTS HOLDS ALL RIGHTS INCLUDING THE COPYRIGHT OF THIS DOCUMENT, AS WELL AS THE CONCEPTS AND DESIGN INCORPORATED HEREIN AS AN INSTRUMENT OF SERVICE. AS PROPERTY OF DESTREE DESIGN ARCHITECTS IT IS NOT TO BE COPIED, DISTRIBUTED, OR USED IN WHOLE OR PART WITHOUT THE EXPRESS WRITTEN CONSENT OF DESTREE DESIGN ARCHITECTS.

JDR
ENGINEERING, INC.

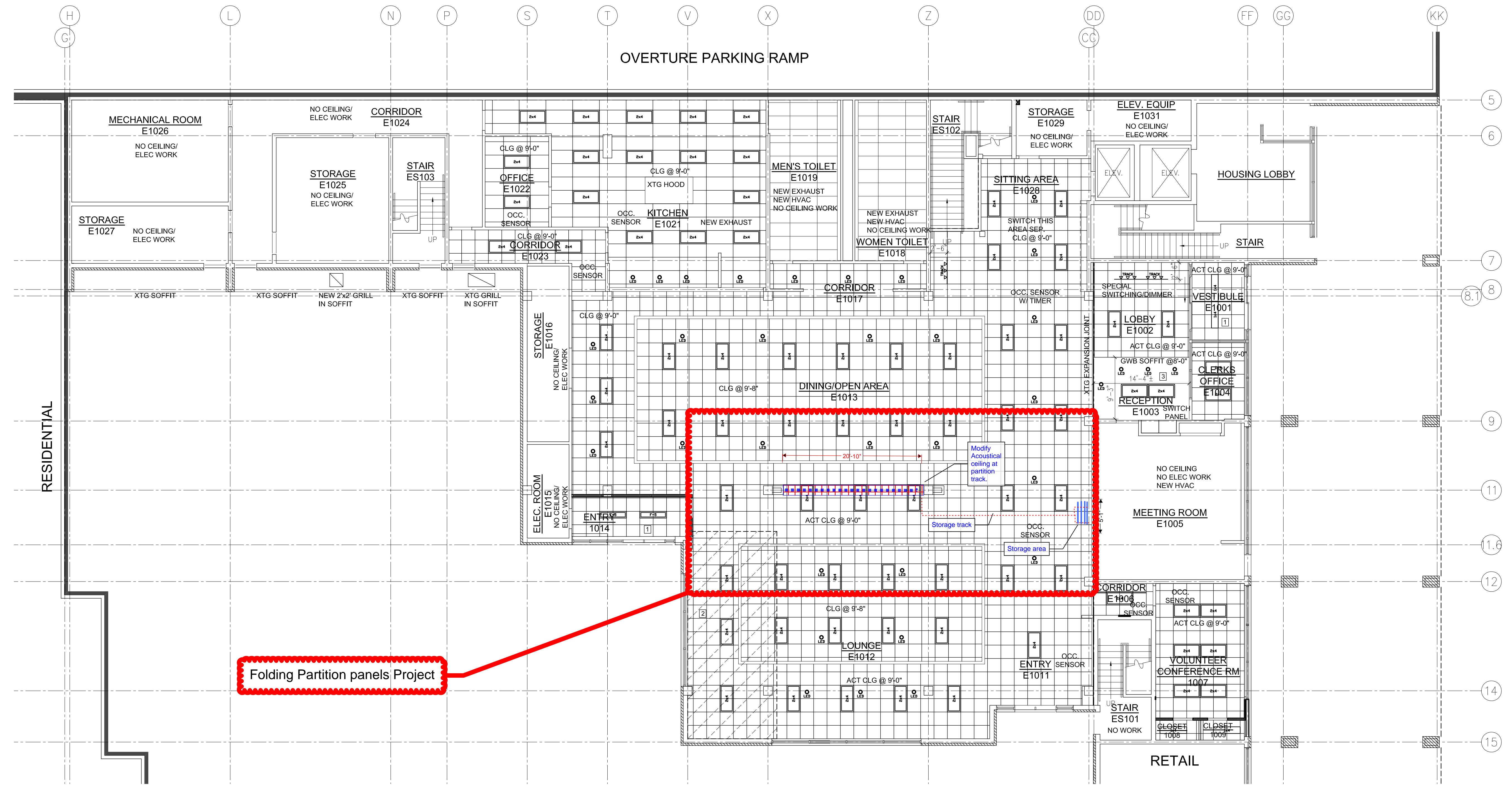
**MADISON SENIOR CENTER
RENOVATION**
330 W MIFFLIN ST.
MADISON, WI 53703

KEYNOTES

- 1 PROVIDE ACT HOLD DOWN CLIPS
- 2 INSULATE CEILING ABOVE PER DETAIL 8/A801.
- 3 PROVIDE SOUND BATTS ABOVE GWB SOFFIT.

GENERAL NOTES

1. SEE ELECTRICAL PLAN E201 FOR ADDITIONAL INFORMATION.



Folding Partition panels Project

N
1 FIRST FLOOR REFLECTED CEILING PLAN
1/8" = 1'-0"

ISSUANCES:	
CD'S	12.23.08
RD SET	08.15.09
PROJECT:	
NUMBER:	080514.00
DATE:	12.23.08
REV:	9.29.22
---	---
---	---

SHEET:
A200

Record Set Drawings

DESTREE DESIGN

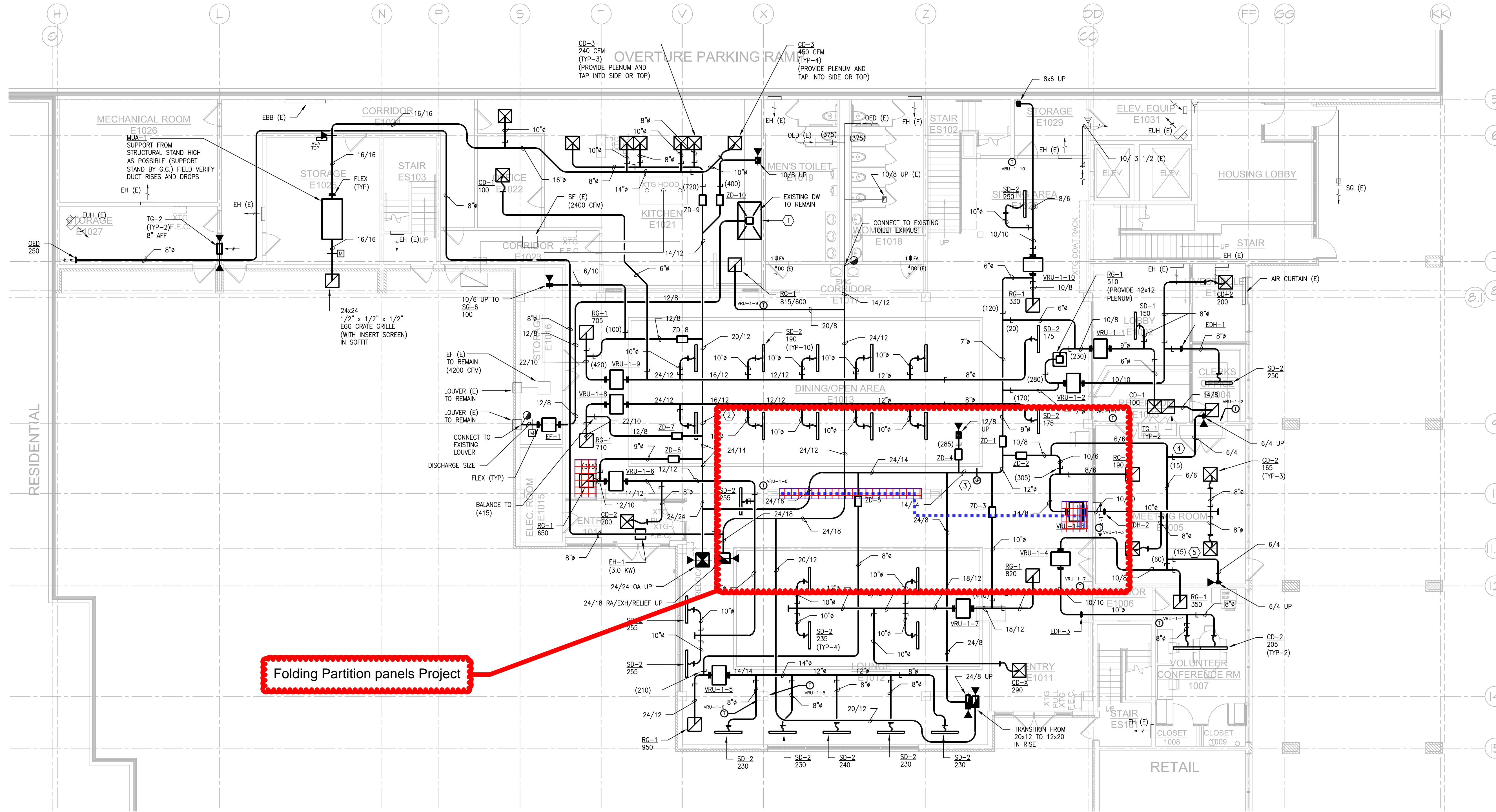
ARCHITECTS

222 West Washington Ave.
Suite 310
Madison, WI 53703
ph: 608.268.1499
fax: 608.268.1498
www.destreearchitects.com

DESTREE DESIGN ARCHITECTS HOLDS ALL RIGHTS INCLUDING THE COPYRIGHT OF THIS DOCUMENT, AS WELL AS THE CONCEPTS AND DESIGNS INCORPORATED HEREIN AS AN INSTRUMENT OF SERVICE. AS PROPERTY OF DESTREE DESIGN ARCHITECTS IT IS NOT TO BE COPIED, DISTRIBUTED, OR USED IN WHOLE OR PART WITHOUT THE EXPRESS WRITTEN CONSENT OF DESTREE DESIGN ARCHITECTS.

JDR
ENGINEERING, INC.

**MADISON SENIOR CENTER
RENOVATION
330 W. MIFFLIN ST.
MADISON, WI 53703**



Folding Partition panels Project

1 FIRST FLOOR NEW WORK PLAN - HVAC
M201 SCALE: 1/8"=1'-0"

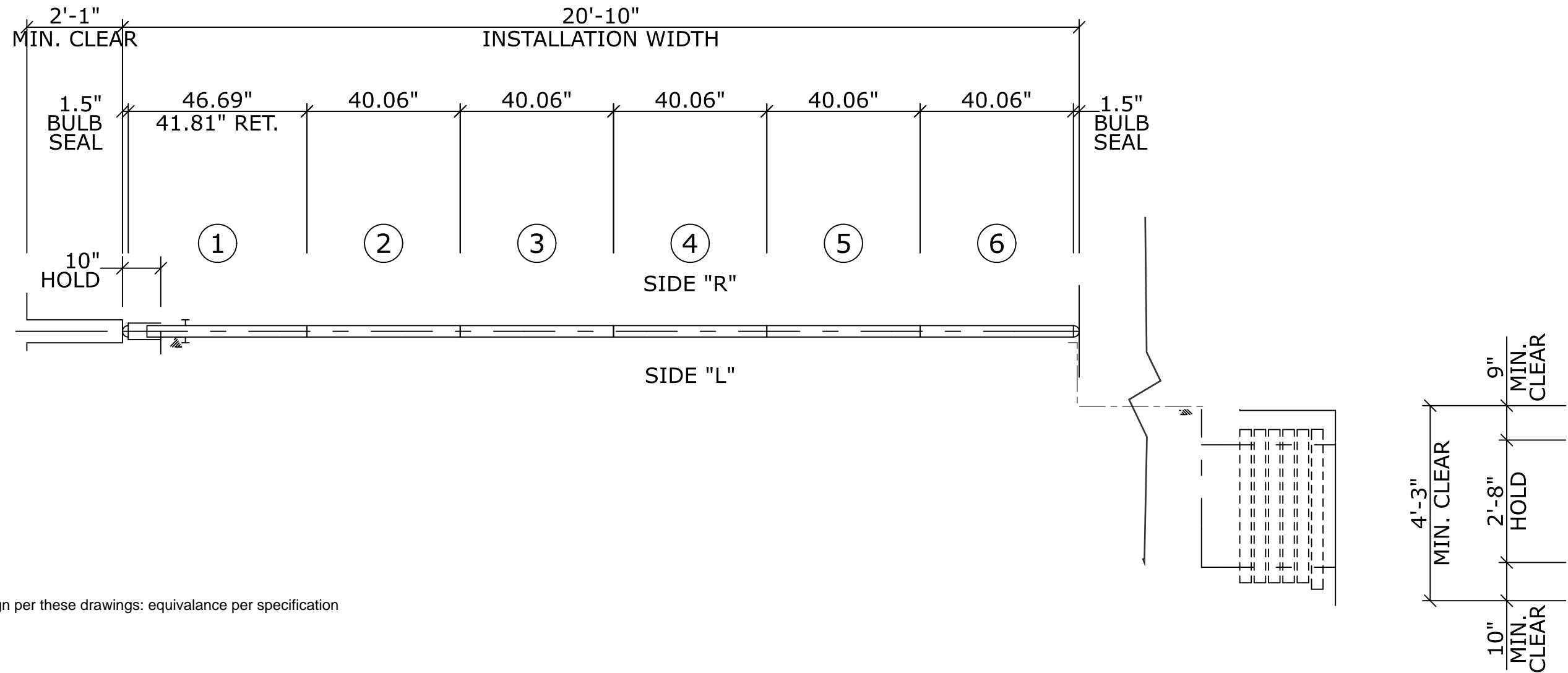


- GENERAL NOTES:**
- CEILING SPACE ON THIS PROJECT IS LIMITED. CLOSE COORDINATION AND COMMUNICATION BETWEEN ALL TRADES IS ESSENTIAL AND REQUIRED THROUGHOUT THE PROJECT. CONTACT, COMMUNICATE AND COORDINATE WITH ALL TRADES PRIOR TO STARTING ANY INSTALLATIONS. ANY PIPING, DUCTWORK, CONDUITS, DRAIN LINES ETC. INSTALLED WITHOUT PRIOR COORDINATION WILL BE MOVED WITHOUT ADDITIONAL COST TO THE OWNER.
- KEYED NOTES:**
- CONNECT 12x8 DUCT TO 12x12 DISHWASHER HOOD CONNECTION. HOOD TO BE EQUAL TO CAPTIVEAIRE MODEL 4224VHB-G, 5'-6" x 3'-6" 750 CFM. (HOOD BY HC.)
 - TRANSITION 24x14 DUCT TO 32x8 TO FIT OVER EXISTING HORIZONTAL ROOF DRAIN PIPE AS NEEDED AND THEN TRANSITION TO 20x12.
 - DUCT STATIC PRESSURE SENSOR.
 - BASE BID: ADJUST DAMPER TO 15 CFM, UNDER ALTERNATE BID ADJUST DAMPER TO 0 CFM.
 - BASE BID: ADJUST DAMPER TO 0 CFM, UNDER ALTERNATE BID ADJUST DAMPER TO 15 CFM.

RECORD DRAWING NOTE
THESE RECORD DRAWINGS WERE CREATED BY JDR ENGINEERING INC. BASED ON ORIGINAL BUILDING PLANS PROVIDED BY THE OWNER. CONSTRUCTION DOCUMENTS FOR THE PROJECT AND MARKED-UP "AS BUILT" SET SUBMITTED BY THE CONTRACTOR(S). NOT ALL OF THE ITEMS SHOWN ON THESE DRAWINGS HAVE BEEN WITNESSED BY, NOR VERIFIED BY, JDR ENGINEERING INC., THEREFORE, ALL EXISTING CONDITIONS MUST BE FIELD VERIFIED PRIOR TO ANY ADDITIONAL WORK IN THESE AREAS.

ISSUANCES:	
CD'S	12.23.08
RD'S	10.12.09
PROJECT:	
NUMBER:	080514.00
DATE:	12.23.08
REV:	9.29.22

SHEET:
M201



Basis of design per these drawings: equivalence per specification

ARCHITECT / GENERAL CONTRACTOR NOTES

1. MINIMUM DIMENSIONS PROVIDE FOR CLEARANCE FROM ALL ADJACENT CONSTRUCTION/FIXTURES FOR ADJUSTMENT, OPERATION, AND SAFETY.
2. GENERAL CONTRACTOR SHALL BE RESPONSIBLE FOR ALL STRUCTURAL SUPPORT, ADJOINING CONSTRUCTION AND TRIM.

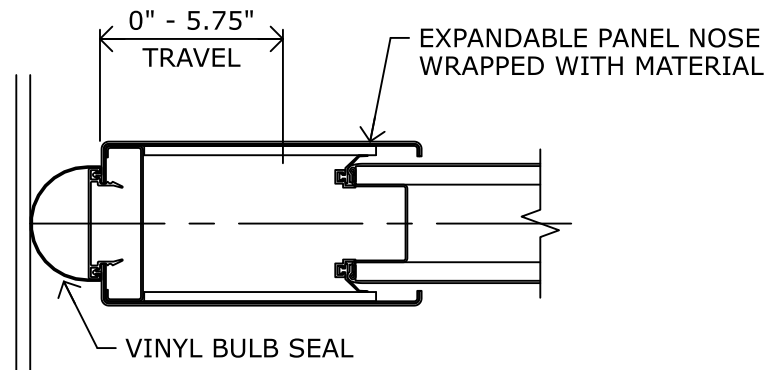
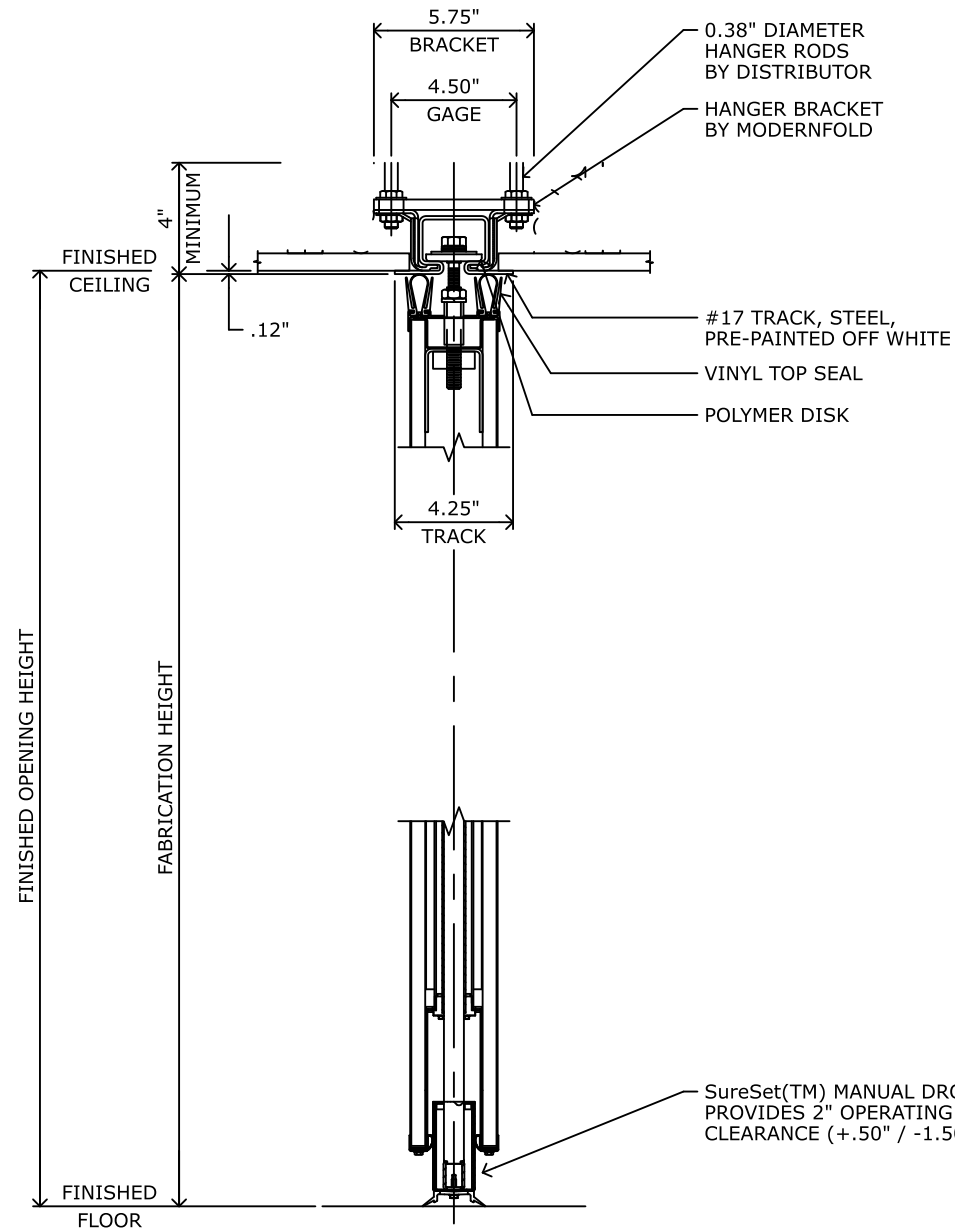
**PANEL LAYOUT
OP-01**

CLOSURE METHOD	EXPANDABLE - 6"
TRAIL JAMB HEIGHT	N/A
PANEL FABRICATION HEIGHT	9'-0"
LEAD JAMB HEIGHT	N/A
SUSPENSION SYSTEM	#17 STD BKT (RA)
BOTTOM SEALS	SURESET MANUAL 2" (51MM)
PANEL ACOUSTICAL RATING	47 STC
HANGING WEIGHT	7 LBS./SQ.FT.
PANEL SKIN/FACING	GYP SUM
HINGE/TRIM COLOR	TO BE ADVISED/TO BE ADVISED
PANEL FINISH	VINYL
PANEL FINISH COLOR	TO BE ADVISED

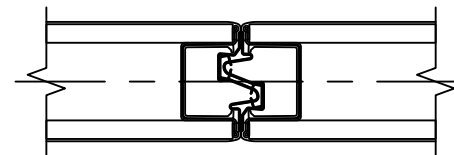
**ACOUSTI-SEAL
PREMIER - SINGLE PANEL**

				JOB NAME: MADISON SENIOR CENTER RENOVATION	
				OP WALLS	
				LOCATION: MADISON, WI	
				ARCHITECT:	
				CONTRACTOR: XX	
				DISTRIBUTOR:	
				DRAWING NO. A32469-01-D1	
				ORDER NO:	
				SHEET: 1 OF 6	

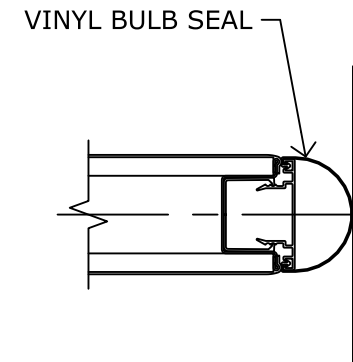
DATE	REV	ISSUED FOR	DRN.
08/04/22	0	APPROVAL	MPM
9/29/22	1	Bid	
	2		
	3		
	4		
	5		
	6		
	7		
	8		



EXPANDABLE PANEL WITH BULB SEAL



PANEL JOINT



BULB SEAL

ARCHITECT / GENERAL CONTRACTOR NOTES

**DETAIL SHEET
OP-01**

CLOSURE METHOD	EXPANDABLE - 6"
TRAIL JAMB HEIGHT	N/A
PANEL FABRICATION HEIGHT	9'-0"
LEAD JAMB HEIGHT	N/A
SUSPENSION SYSTEM	#17 STD BKT (RA)
BOTTOM SEALS	SURESET MANUAL 2" (51MM)
PANEL ACOUSTICAL RATING	47 STC
HANGING WEIGHT	7 LBS./SQ.FT.
PANEL SKIN/FACING	GYPSON
HINGE/TRIM COLOR	TO BE ADVISED/TO BE ADVISED
PANEL FINISH	VINYL
PANEL FINISH COLOR	TO BE ADVISED

**ACOUSTI-SEAL
PREMIER - SINGLE PANEL**

				JOB NAME:	MADISON SENIOR CENTER RENOVATION
					OP WALLS
				LOCATION:	MADISON, WI
				ARCHITECT:	
				CONTRACTOR:	
				DISTRIBUTOR:	
DRAWING NO. A32469-01-D4		ORDER NO:		SHEET: 4 OF 6	

DATE	REV	ISSUED FOR	DRN.
08/04/22	0	APPROVAL	MPM
9/29/22	1	Bid	
	2		
	3		
	4		
	5		
	6		
	7		
	8		