

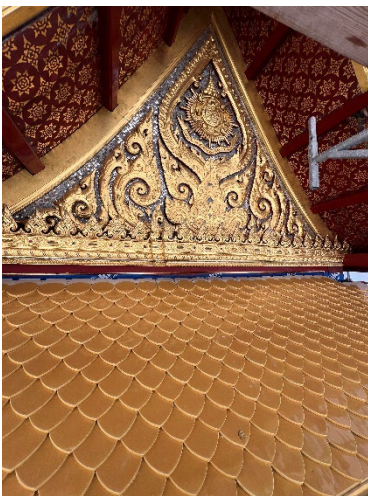
**Board of Park Commissioners  
Olbrich Botanical Gardens Quarterly Report  
June 2024**

**Bolz Conservatory**



In May, phase two of the assessment and maintenance work continued in the Bolz Conservatory. This phase focused on assessing the windows, repairing the mechanical equipment in the cupola, and assessing the structure. Additional maintenance and repair is needed and will be conducted in 2025.

**Royal Thai Pavilion Updates**



Phase two is in full swing with the Royal Thai Pavilion. This phase includes cleaning the biologicals off the structure, painting, replacing the gold leaf where needed, and replacing the glass mosaic tiles. This phase is expected to finish in fall 2024.

The Wisconsin State Journal did a follow-up feature story on the project found here:

[https://madison.com/news/local/olbrich-thai-pavilion-madison-gold-leaf-kalam-restoration/article\\_d3f68336-28e9-11ef-a4c0-bbc8b3855633.html](https://madison.com/news/local/olbrich-thai-pavilion-madison-gold-leaf-kalam-restoration/article_d3f68336-28e9-11ef-a4c0-bbc8b3855633.html)

## We're Live

The screenshot shows the Olbrich Botanical Society membership registration interface. At the top is the logo for Olbrich Botanical Society. Below it are three buttons: 'Join', 'Renew', and 'Gift'. The 'Join' button is highlighted. A breadcrumb trail reads 'Personal Information > Additional Information > Payment'. The main form area is titled 'Select a Membership' and features a dropdown menu with 'Garden Friend (\$40.00) - 1 Year' selected. Below the dropdown is a 'Show Benefits' link. A section for 'Automatic Renewal' contains an unchecked checkbox and a warning icon with the text: 'By selecting this option you authorize the institution to automatically charge your credit card at the moment of the membership renewal'. Below this is a link: 'Not a member? Join us today!'. The form includes several input fields: 'First Name', 'Last Name', 'Email', 'Birthdate' (with sub-fields for MM, DD, and YYYY), 'Phone', 'Address', 'City', 'State', 'ZIP/Postal Code', and a dropdown for 'United States'. At the bottom is a large black button labeled 'Next →'.

Olbrich Botanical Society has officially gone live with Veevart. Veevart is an all-encompassing software system that manages memberships, donations, registrations, admission, facility rentals, gift shop management, and more! Why is this big news? Here are a few reasons we're excited to be using Veevart.

- We're paperless! Membership cards to Olbrich Botanical Society are now digital. Not only is it better for the environment to stop using hard copy membership cards, we're also no longer reliant on mailing membership cards.

- One-stop shop! Veevart has significantly streamlined the process for purchasing and processing memberships, donations, tickets, class registrations, and more. This means Olbrich Botanical Society will no longer use the City of Madison payment portal for memberships and donations. It also means that information is directly entered into the software versus manual data entry by staff.

- Veevart is now the one software system we're using versus multiple systems. This greatly increases our ability to access information all in one location.

## Olbrich After Hours

For many years, guests have enjoyed free music at Olbrich Botanical Gardens as part of the Summer Concert Series. New this year, the much-loved concert series is back with a new name Olbrich After Hours. The popular free music concert series now includes food trucks, activities, a bar, and more! The food trucks are picked to match the style of music for that evening. Olbrich After Hours is every Tuesday from June 25 – August 13. Doors open at 6pm and concert starts

at 7pm. Check out the list of upcoming performances [here](#). Here's an example of one of the upcoming Olbrich After Hours events.

**July 16<sup>th</sup> - Cycropia Aerial Dance, with Searchlights and Ho Etsu Taiko** - The booming sounds of Chicago's Ho Etsu Taiko's drums will ring through Olbrich Botanical Gardens, extending cinematic soundscapes from the central Wisconsin band Searchlights, all connecting with Madison's own Cycropia Aerial Dance taking flight and literally dancing in the sky. This collaboration is a celebration of bridging the earth and heavens, translating inspiration from nature to make visual and audible art. What better place for this collaboration than Olbrich where the gardens are an expression of humans channeling heavenly energy through the sun and the natural elements of plants to surround the audience in art.

**Food Carts:** El Burrito Loco & Frios Gourmet Pops

**Eco-friendly Org:** 350 Wisconsin

*Special thanks to our sponsors:*

*Presenting sponsors: Bridging Nature & Art Endowment and Pleasant T. Rowland Foundation*

*Series Sponsors: Sally Wilmeth & Terry Geurkink, Fox 47, Audio For The Arts, and MOD Productions*

### Nature's Notebook



Earlier this year, Olbrich Botanical Gardens joined the [U.S. National Phenology Network](#). Our staff attended a training to learn how to document species throughout the year then contribute the data to the national database. So far this year, Olbrich Botanical Gardens is the top 5 contributor of data.

### Art brightens the Frautschi Family Learning Center



This spring Artist Allana Randall brought to life the staircase in the Frautschi Family Learning Center with a vibrant plant inspired mural. The bright plants bring curiosity to guests to see what's on the second floor. Once they climb the steps they encounter the new Children's Loft. This area now features comfy seating, books, and light activities for families with young children.

### Summer Camps

Throughout the summer, the Frautschi Family Learning Center is filled with summer camps. The Greater Madison Writing Project hosts a series of writing summer camps at Olbrich Botanical Gardens. For the second year, Olbrich Botanical Gardens is hosting summer camps as well. These camps are for elementary school-aged children and are nature-based camps. In early June, campers designed their own nature play areas.

