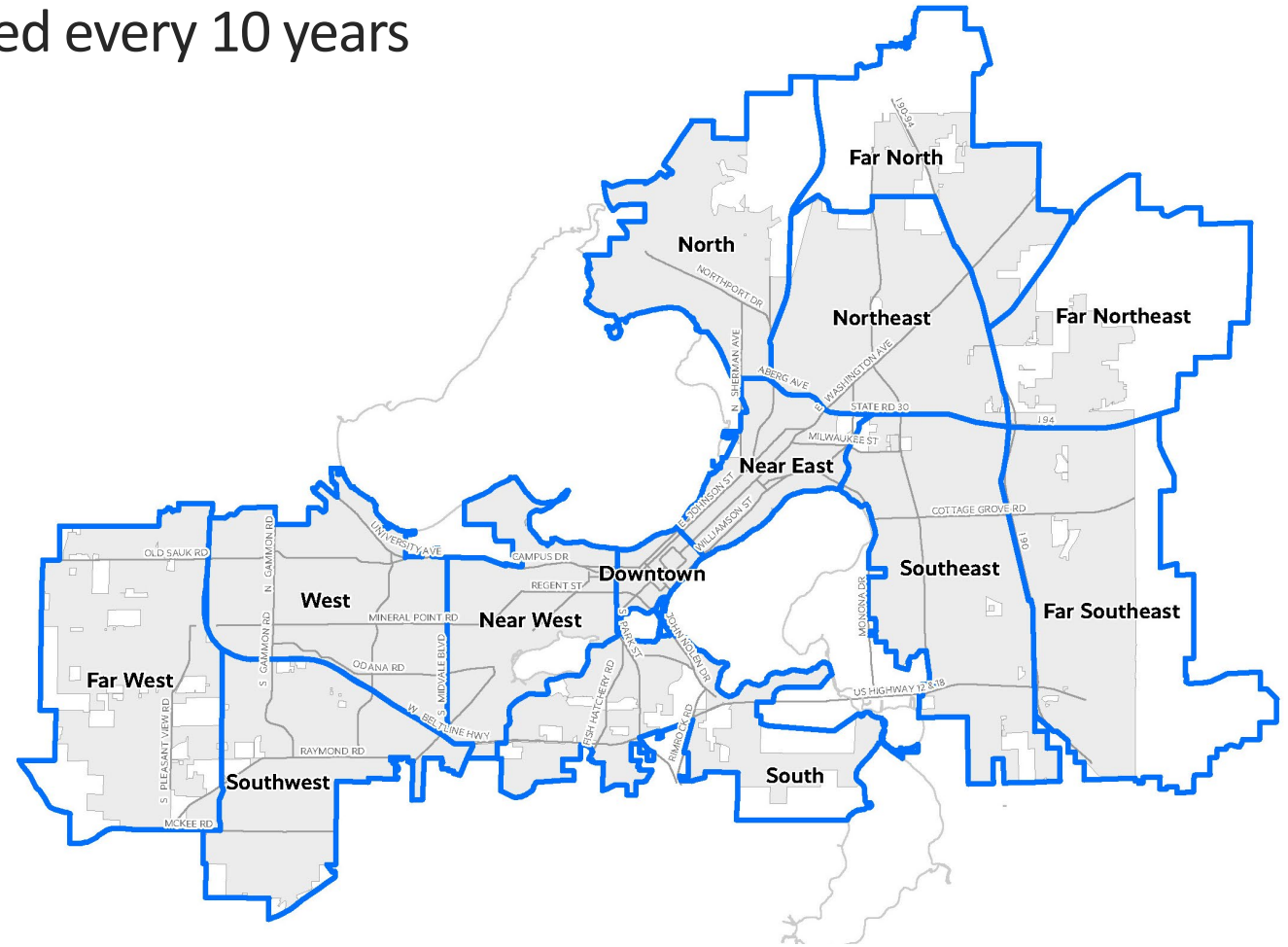


Planning Framework

Simplify and standardize sub-area planning in Madison with 13 higher level Area Plans updated every 10 years

City of Madison Planning Division
May 4, 2022



Background

- 2018 Comprehensive Plan: Develop a process to consider outdated sub-area plans for retirement
 - Led to this proposed Planning Framework
- Staff interviewed 10 cities regarding their approach to sub-area planning
- Guidance from Plan Commission work sessions in [2020](#), [2021](#) and [2022](#)
- Racial Equity and Social Justice (RESJ) Analysis
- Coordination with City Agencies regarding their Plans/Initiatives



5 Primary Benefits

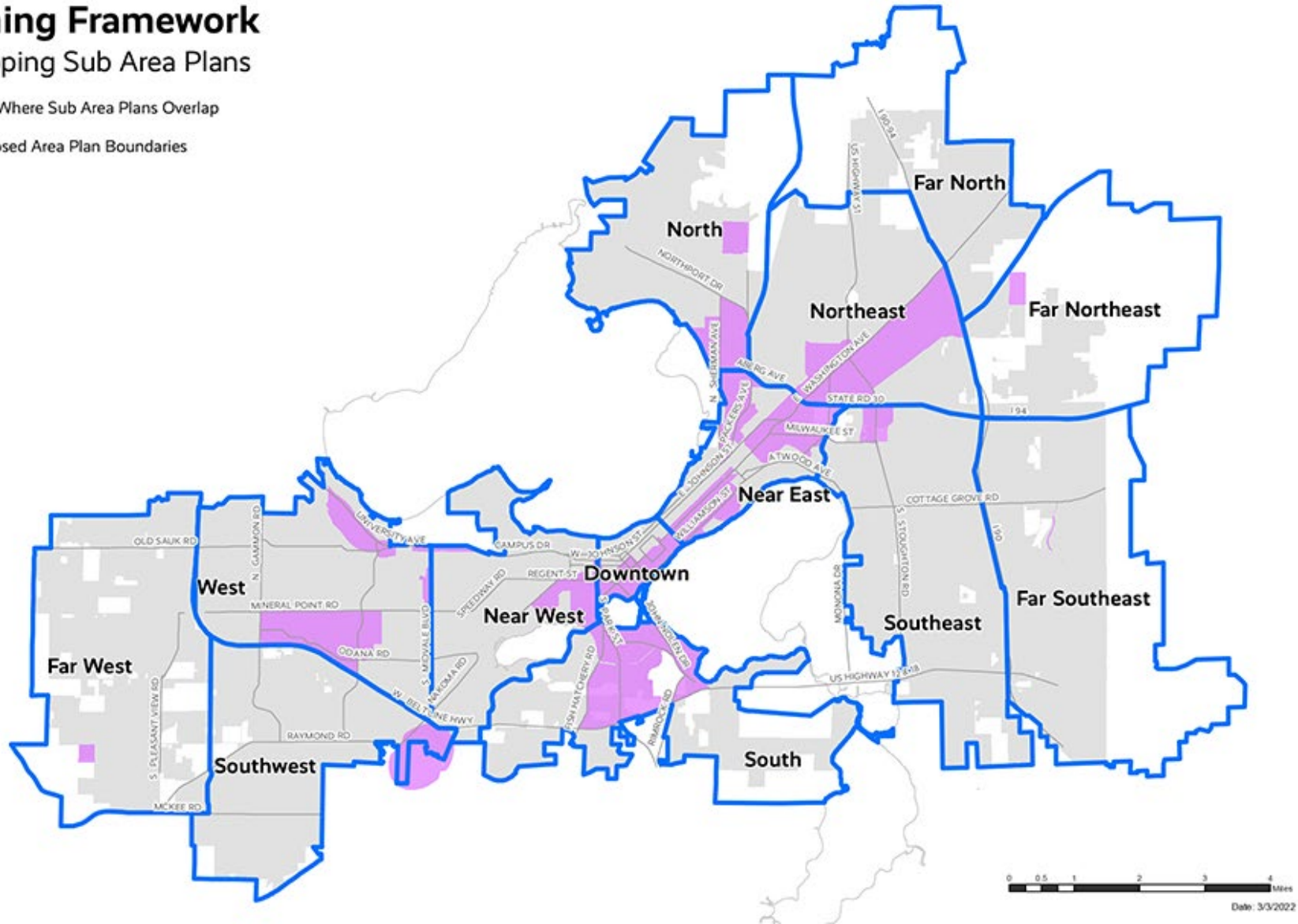
1. A Clear Plan Recommendation
2. Full City Coverage
3. Frequent Plan Updates
4. Consistent Plan Topics, Higher-Level Recommendations
5. Enhanced Coordination on City Initiatives

1. A Clear Plan Recommendation

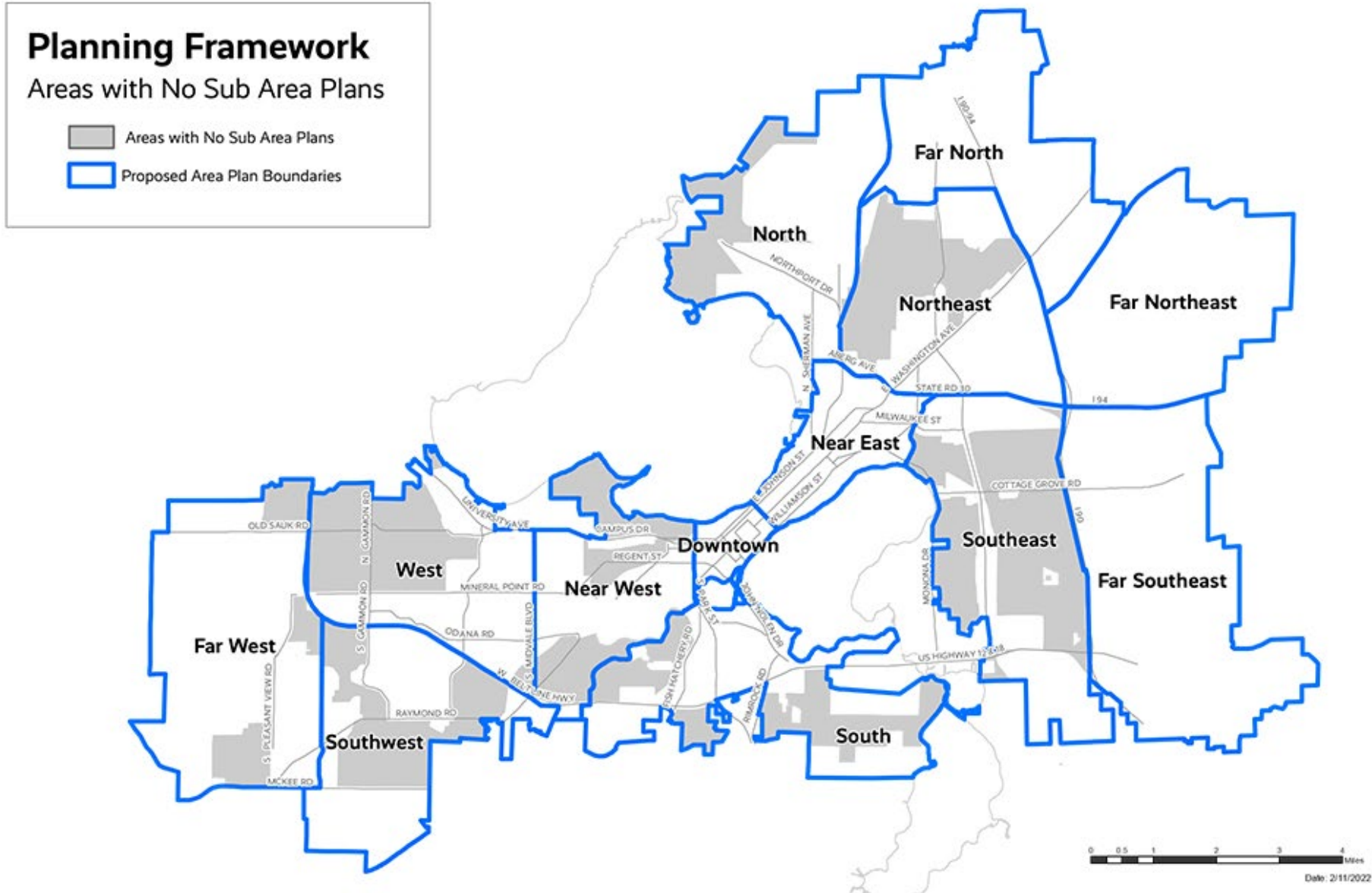
Planning Framework

Overlapping Sub Area Plans

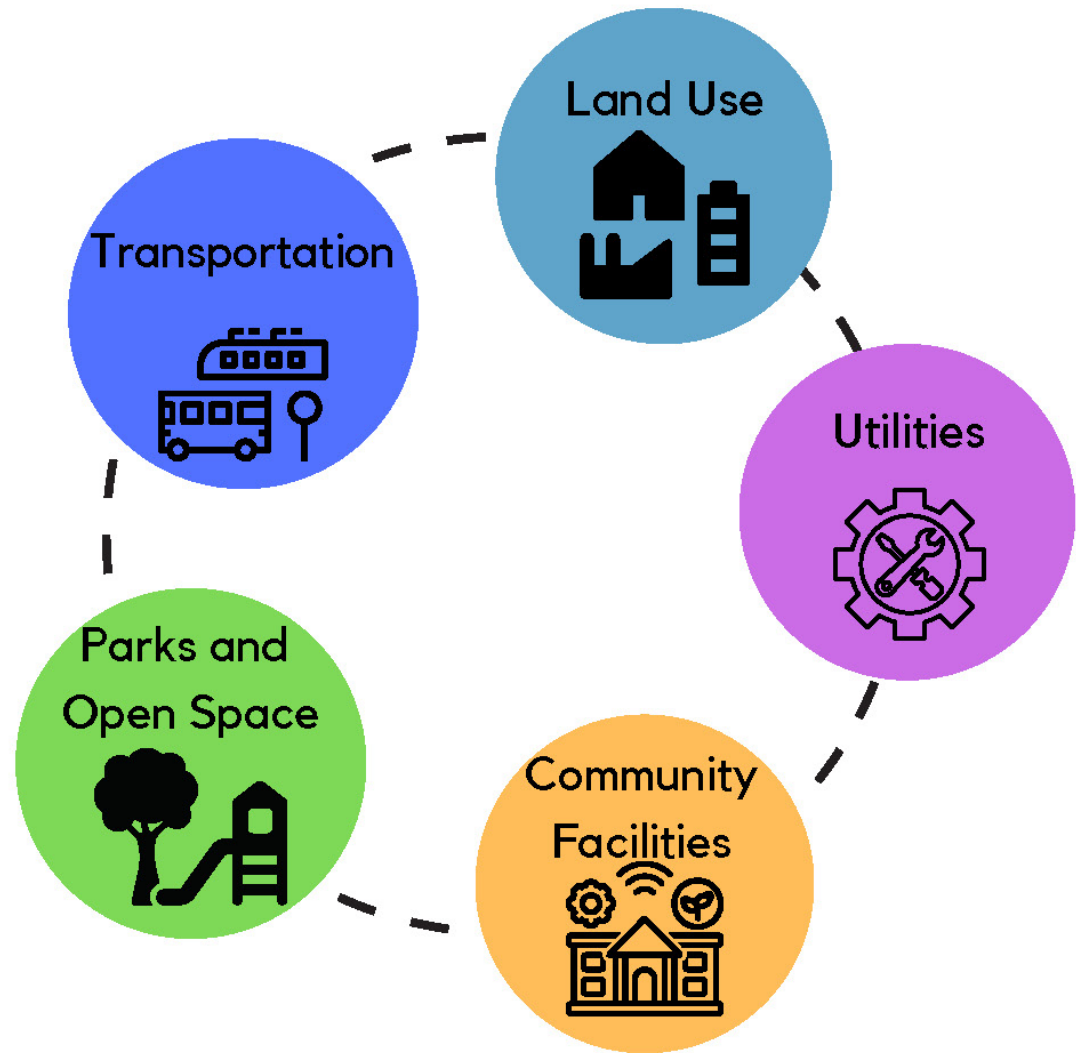
-  Area Where Sub Area Plans Overlap
-  Proposed Area Plan Boundaries



2. Full City Coverage



4. Consistent Plan Topics, Higher-Level Recommendations

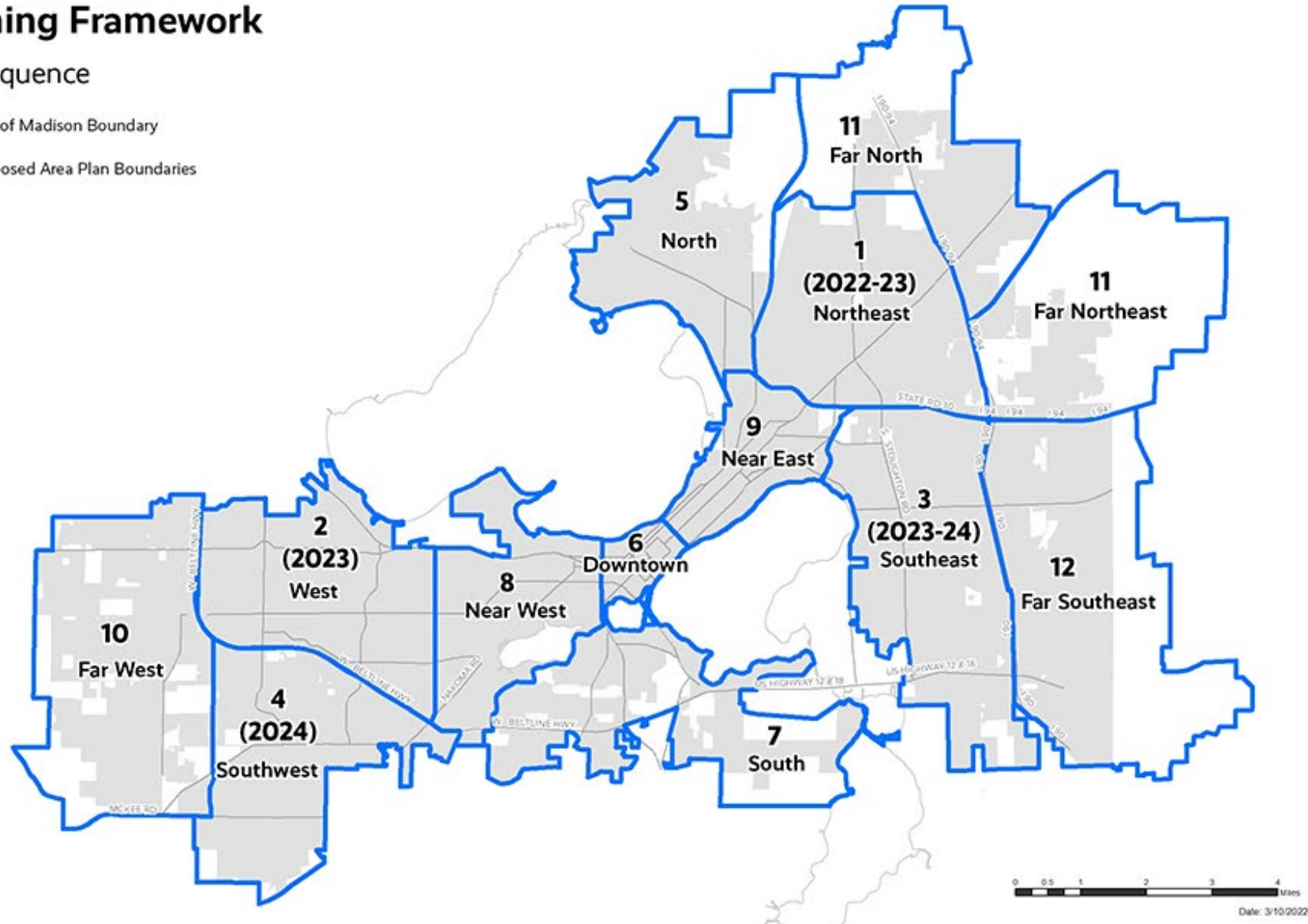


5. Enhanced Coordination on City Initiatives

Planning Framework

Plan Sequence

- City of Madison Boundary
- Proposed Area Plan Boundaries



Example Plan Mockup

TABLE OF CONTENTS

INTRODUCTION.....4

PUBLIC PARTICIPATION.....6

BACKGROUND.....7

- PLANNING AREA
- MUNICIPAL JURISDICTION AND PROPERTY OWNERSHIP
- NATURAL FEATURES
- EXISTING LAND USES
- PLANNING FEATURES OVERLAY
- DEMOGRAPHICS
- COMMUNITY ASSETS
- SCHOOL DISTRICTS

RECOMMENDATIONS.....8

- LAND USE
- TRANSPORTATION
- PARKS AND OPEN SPACE
- COMMUNITY FACILITIES
- UTILITIES

PLAN IMPLEMENTATION.....10

- PLAN ADOPTION
- PROACTIVE REZONING AND OFFICIAL MAPPING
- PLAN IMPLEMENTATION MATRIX

ADOPTING RESOLUTION.....12

LIST OF TABLES

TABLE 1: RECOMMENDED LAND USES
TABLE 2: PLAN IMPLEMENTATION MATRIX

LIST OF MAPS

MAP 1 PLANNING AREA
MAP 2 NATURAL FEATURES
MAP 3 ELEVATION MODEL
MAP 4 EXISTING LAND USE
MAP 5 EXISTING ZONING
MAP 6 PLANNING FEATURES OVERLAY
MAP 7 HISTORIC RESOURCES
MAP 8 POPULATION BY RACE OR ETHNICITY
MAP 9 COMPREHENSIVE PLAN GFLU
MAP 10 COMMUNITY ASSETS
MAP 11 PED/BIKE NETWORK
MAP 12 TRANSIT NETWORK
MAP 13 LAND USE AND STREET PLAN
MAP 14 PARKS AND OPEN SPACE PLAN
MAP 15 TRANSPORTATION PLAN
MAP 16 UTILITIES
Map 17 OFFICIAL MAPPING AND PROACTIVE REZONING
MAP 18 FLOOD INUNDATION AREAS

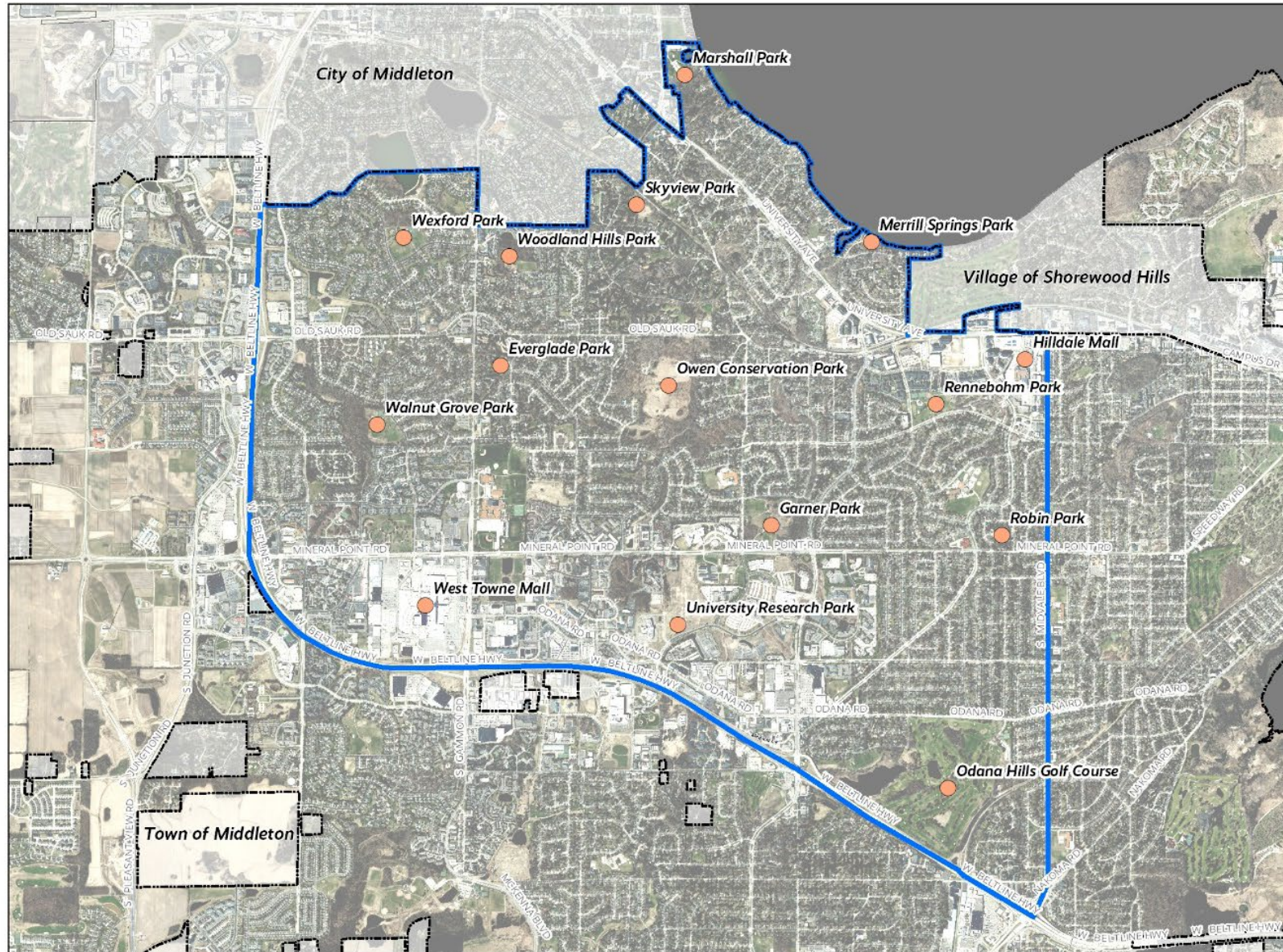
LIST OF FIGURES

FIGURE 1: AREA PLAN GEOGRAPHIES
FIGURE 2: DEMOGRAPHIC PROFILE

APPENDICES

APPENDIX 1: DATA
APPENDIX 2: REFERENCE MAPS
APPENDIX 3: MARKET STUDY
APPENDIX 4: OTHER PLANS AND STUDIES REFERENCED

Example Plan Mockup

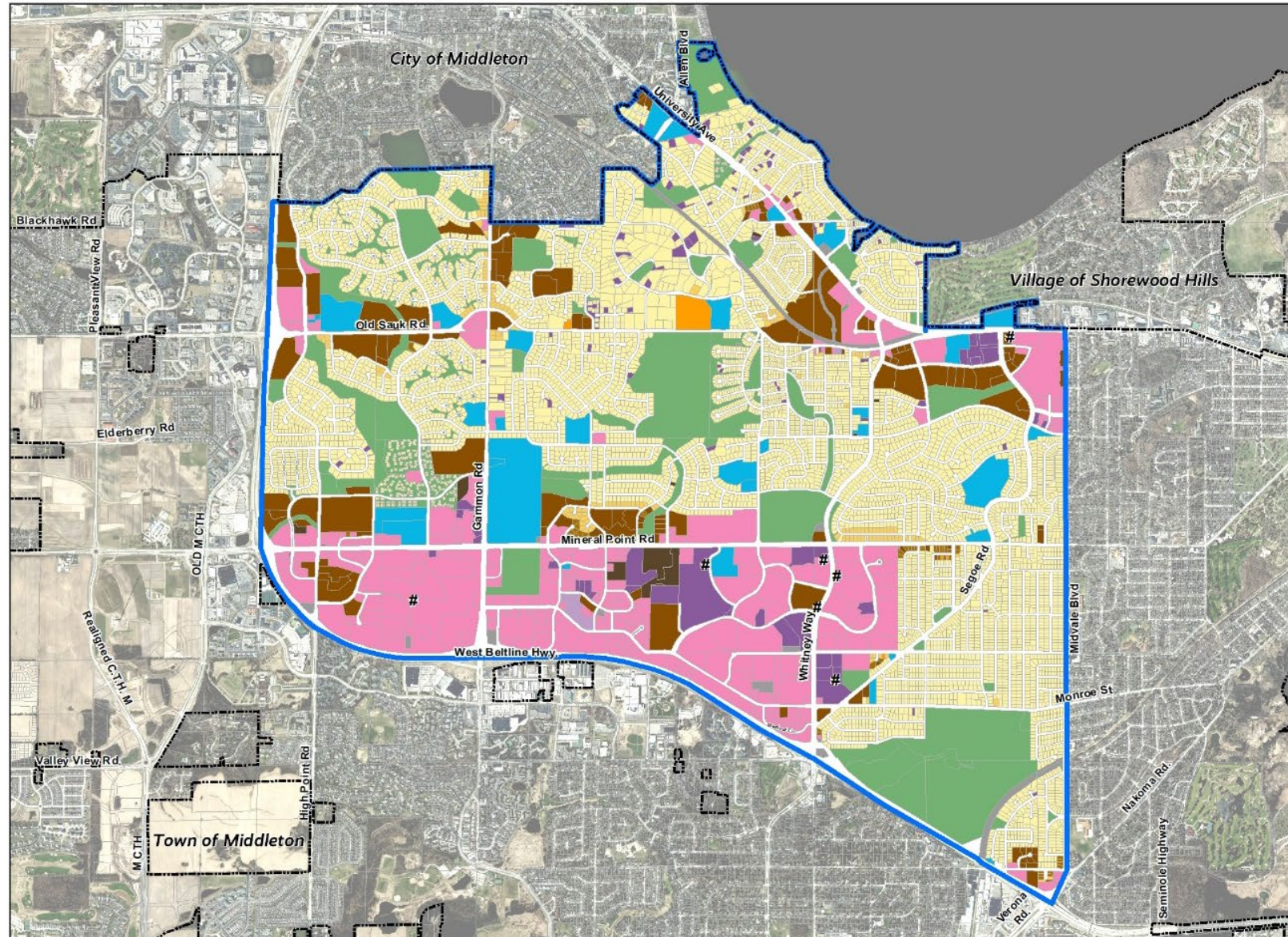


DRAFT

West Area Map 1: Planning Area

- Reference Points
- City of Madison Boundary
- Area Boundary
- City of Middleton
- Town of Madison
- Town of Middleton
- Village of Shorewood Hills

Example Plan Mockup



DRAFT

West Area Plan Map #13 Land Use and Street Plan

- City of Madison Boundary
- District Boundary
- Housing Mix 1 (0-8 du/ac)
- Housing Mix 2 (9-20 du/ac)
- Housing Mix 3 (21-40 du/ac)
- Housing Mix 4 (41-70 du/ac)
- Housing Mix 5 (71-100 du/ac)
- Housing Mix 6 (101+ du/ac)
- Neighborhood Mixed Use
- Community Mixed Use
- Community Retail and Service
- Institutional
- Industrial
- Park and Open Space
- Building Height Maximum
Refer to table x for building heights allowed

Example Area Plan Process, Timeline





Interface with Existing Sub-Area Plans

Area Plans



Within the scope of Area Plan recommendations

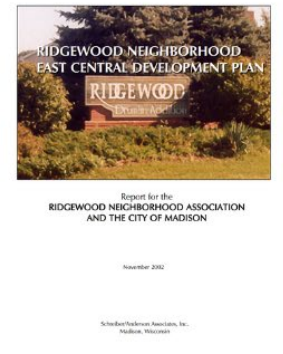
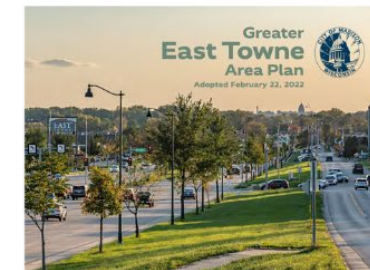
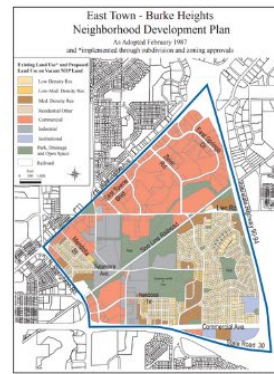


Consistent with current City policies



Relevant to Area Plan communities

Recommendations in existing Sub-Area Plans



Sub-Area Planning – Going Forward

- 13 Area Plans
- Focused CDBG Neighborhood Plans in areas of the City with a higher proportion of residents living with lower incomes and people of color
 - Nearer-term improvements
 - Capacity building and partnerships
- If a critical need or opportunity arises:
 - Focused amendment to an Area Plan
 - Avoid creation of other sub-area plans