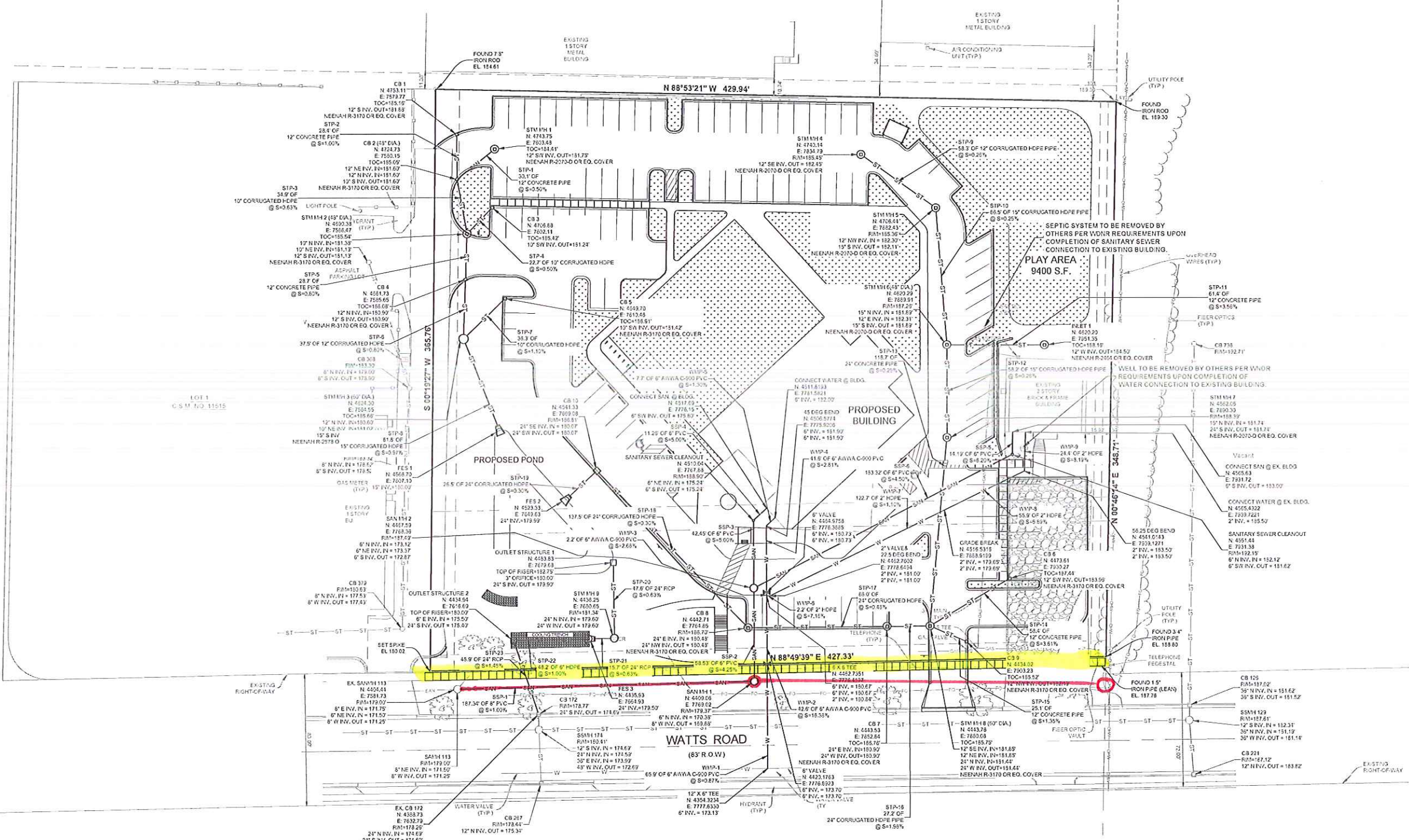


Revisions:	No.	Date	Description

SEAL

ISSUE DATE	Oct 4, 2016
ISSUED FOR	REVIEW
PROJECT MANAGER	ANA
PROJECT NUMBER	130302
SCALE	1" = 40'
SHEET	C5.0



LEGEND	
PROP. WATER SERVICE	— W —
PROP. SANITARY SEWER/LATERAL	— SAN — SAN —
PROP. STORM SEWER	— ST — ST —
STORM CATCH BASIN	□
STORM MANHOLE WITH INLET	⊙
STORM MANHOLE	⊙
STORM FIXED END SECTION	▽

NOTES:  
 1. PIPE RUN LENGTHS AS SHOWN ON THIS PLAN ARE MEASURED NOSE-TO-NOSE (I.E. CENTER-TO-CENTER OF MANHOLES).  
 2. THE LOCATION AND SIZE OF UNDERGROUND STRUCTURES AND UTILITIES SHOWN HEREON HAVE BEEN LOCATED TO A REASONABLE DEGREE OF ACCURACY, BUT THE ENGINEER DOES NOT GUARANTEE THEIR EXACT LOCATION OR THE LOCATION OF OTHERS NOT SHOWN. CONTACT DIGGERS HOTLINE.  
 3. ALL SITE GRADING ACTIVITY AND EROSION CONTROL MEASURES SHALL COMPLY WITH THE WISCONSIN DEPARTMENT OF NATURAL RESOURCES CONSTRUCTION SITE EROSION AND SEDIMENT CONTROL TECHNICAL STANDARDS. ALL EROSION CONTROL MEASURES MUST BE IN PLACE BEFORE CONSTRUCTION BEGINS AND SHALL BE MAINTAINED DURING CONSTRUCTION.  
 4. ALL WORK IN THE PUBLIC RIGHT-OF-WAY SHALL BE PERFORMED BY A CITY OF MADISON LICENSED CONTRACTOR.  
 5. ANY DAMAGE TO THE PAVEMENT ON WATTS ROAD ADJACENT TO THE PROJECT SITE SHALL BE RESTORED IN ACCORDANCE WITH THE CITY OF MADISON'S PAVEMENT PATCHING CRITERIA.  
 6. ALL INLET COLLECTIONS/PAVEMENT RUNOFF SHALL HAVE ULTRACLEAN GUARD CURB AND SEDIMENT MODEL OR EQUIVALENT FILTER INSERTS.  
 DISCLAIMER:  
 DAAR ENGINEERING, INC. ASSUMES NO LIABILITY FOR ALTERATIONS AND/OR CONSTRUCTION THAT DOES NOT CONFORM TO THE DESIGN DEPICTED ON THIS PLAN. NO CHANGES MAY BE MADE TO THIS PLAN WITHOUT EXPRESS WRITTEN CONSENT OF DAAR ENGINEERING, INC. IF ANY DEVIATIONS ARE REQUIRED FOR ANY REASON, IT IS THE CONTRACTOR'S RESPONSIBILITY TO NOTIFY THE PROJECT MANAGER IMMEDIATELY.

