

# OLIN PARK FACILITY

Renovation Project Update  
February 10, 2021



# COMPLETION OF SCHEMATIC DESIGN

## Olin Park Facility Improvements



## Schematic Design Report



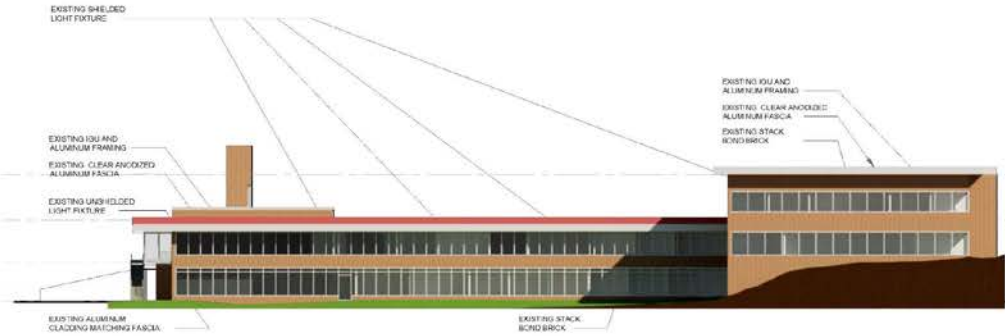
City of Madison Parks Division

January 18, 2023

Prepared by InSite Consulting Architects



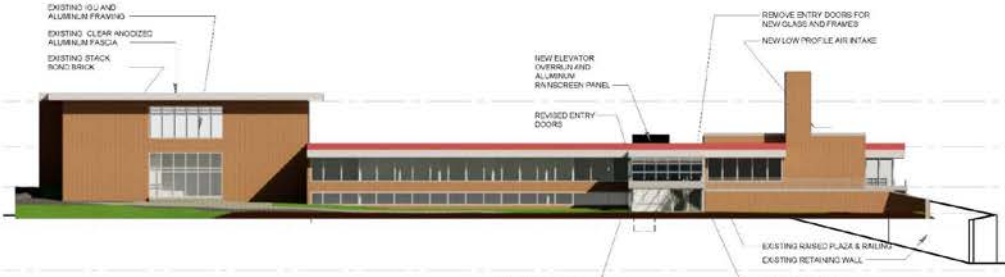
# BUILDING PROGRAM



1 NORTH ELEVATION  
SCALE: 1/16" = 1'-0"



2 WEST ELEVATION  
SCALE: 1/16" = 1'-0"



3 SOUTH ELEVATION  
SCALE: 1/16" = 1'-0"



4 EAST ELEVATION  
SCALE: 1/16" = 1'-0"  
February 3, 2021

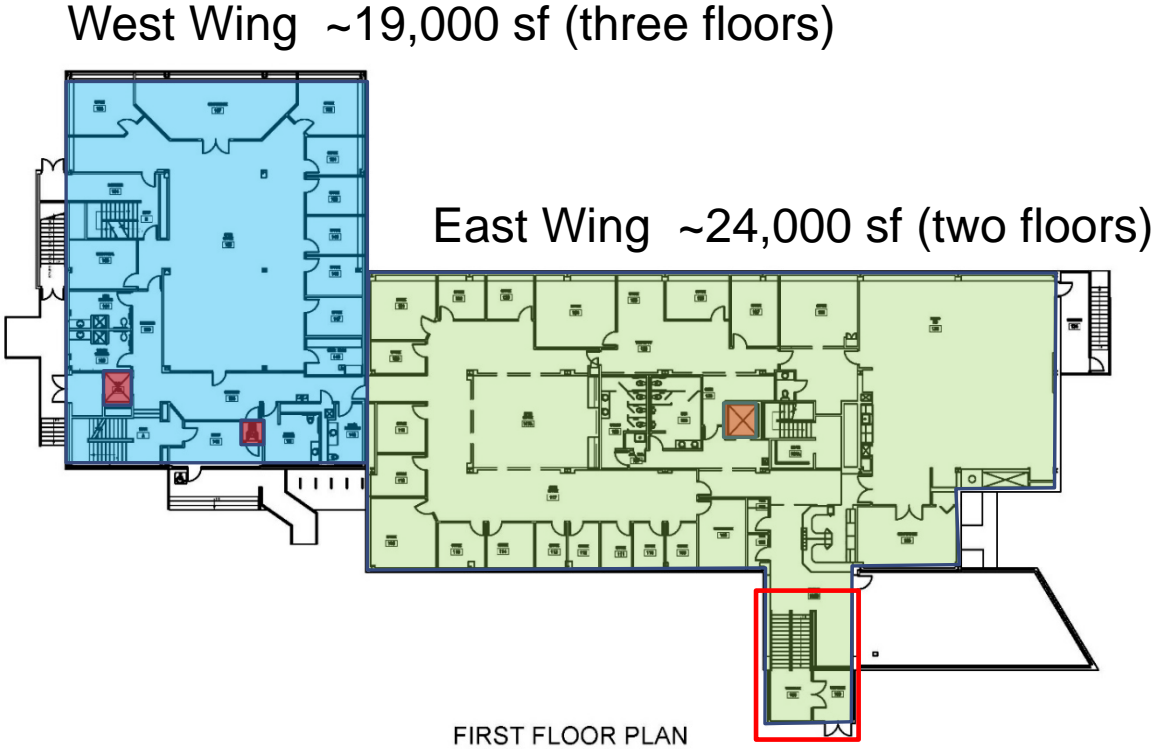
# BUILDING PROGRAM



# BUILDING PROGRAM



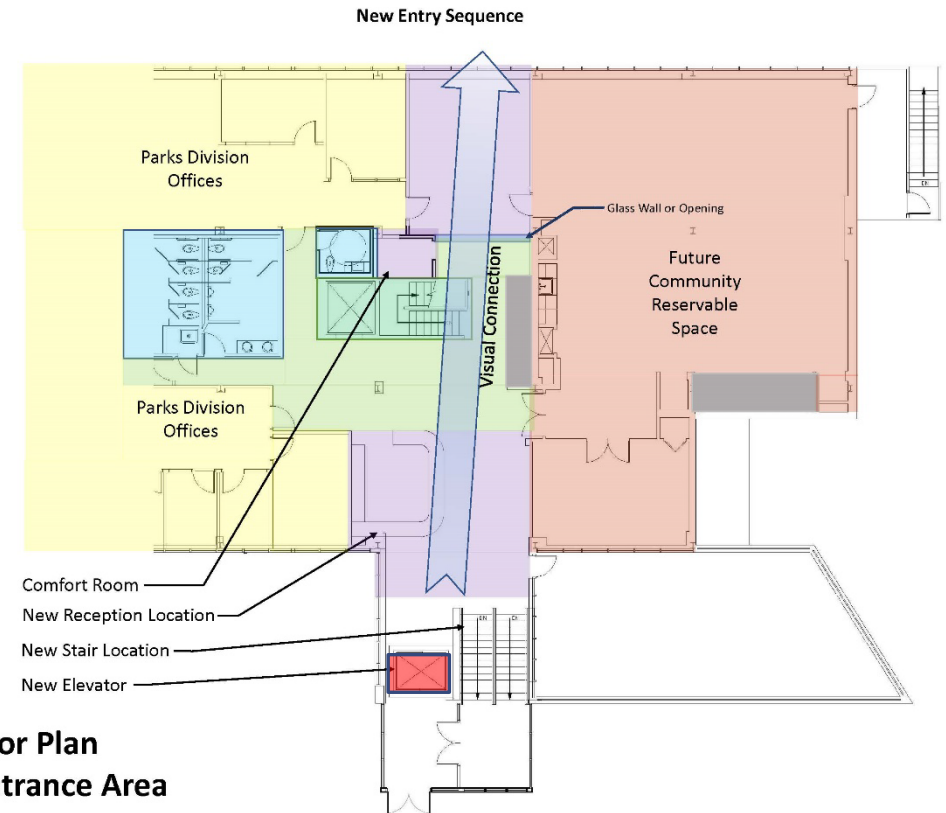
East Lobby Entrance



# ACCESS IMPROVEMENTS – EAST LOBBY



2 WEST ELEVATION  
A500 SCALE: 1/16" = 1'-0"



First Floor Plan  
Main Entrance Area

# ACCESS IMPROVEMENTS – EAST LOBBY

## Olin Park Facility



Main Entrance - Existing



2 WEST ELEVATION  
SCALE: 1/16" = 1'-0"

Main Entrance - Proposed



# ACCESS IMPROVEMENTS



Aerial View



Site Plan

February 3, 2021





# ACCESS IMPROVEMENTS



Extent of Parking Lot Changes



Fully Rendered Plan

# PHASE ONE RENOVATION

## SUMMARY

### Project Goals

#### Key Outcomes

- Quality Workspace
- Leader in Sustainability
- Community Focused
- Fiscal Responsibility

### Project Scope

#### Site

- Provide ADA compliant accessibility
- Improve physical & visual access
- Improve entry sequence for all visitors
- Improve usability for Community

#### Architectural Interiors

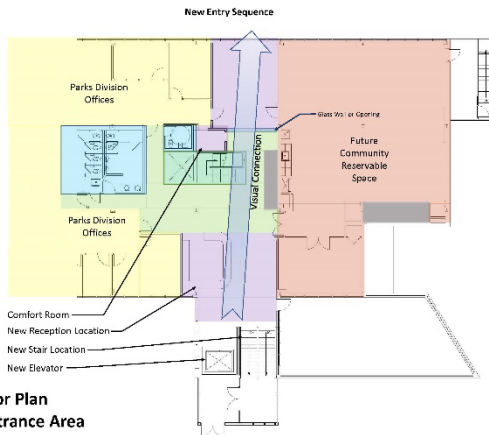
- Provide ADA compliant accessible toilets
- Improved physical & visual access
- Optimize access to nature & natural light
- Provide a comfortable work environment

#### MEP Upgrades

- Replace existing end-of-life MEP equipment
- Optimize energy efficiency while balancing budget issues

#### Fire Protection Retrofit

- Provide Fire Protection through-out bldg.



First Floor Plan  
Main Entrance Area

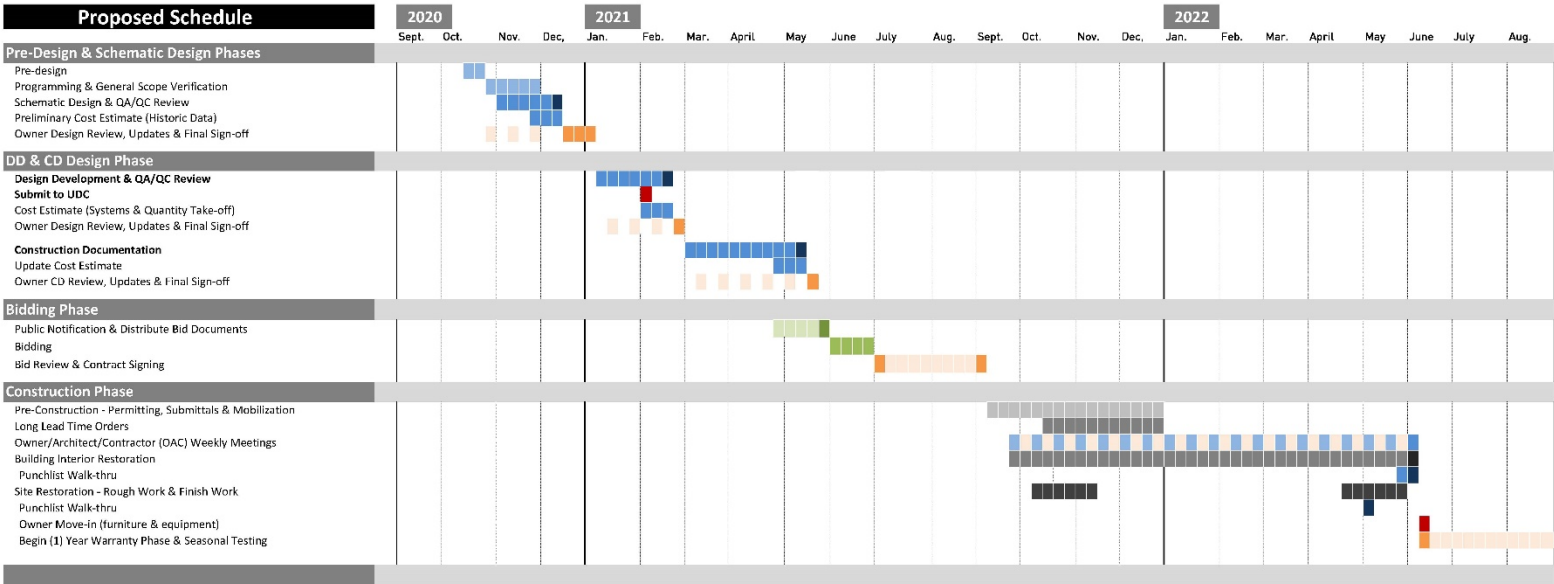


# PROJECT SCHEDULE



## Olin Park Facility Improvements City of Madison Project Schedule

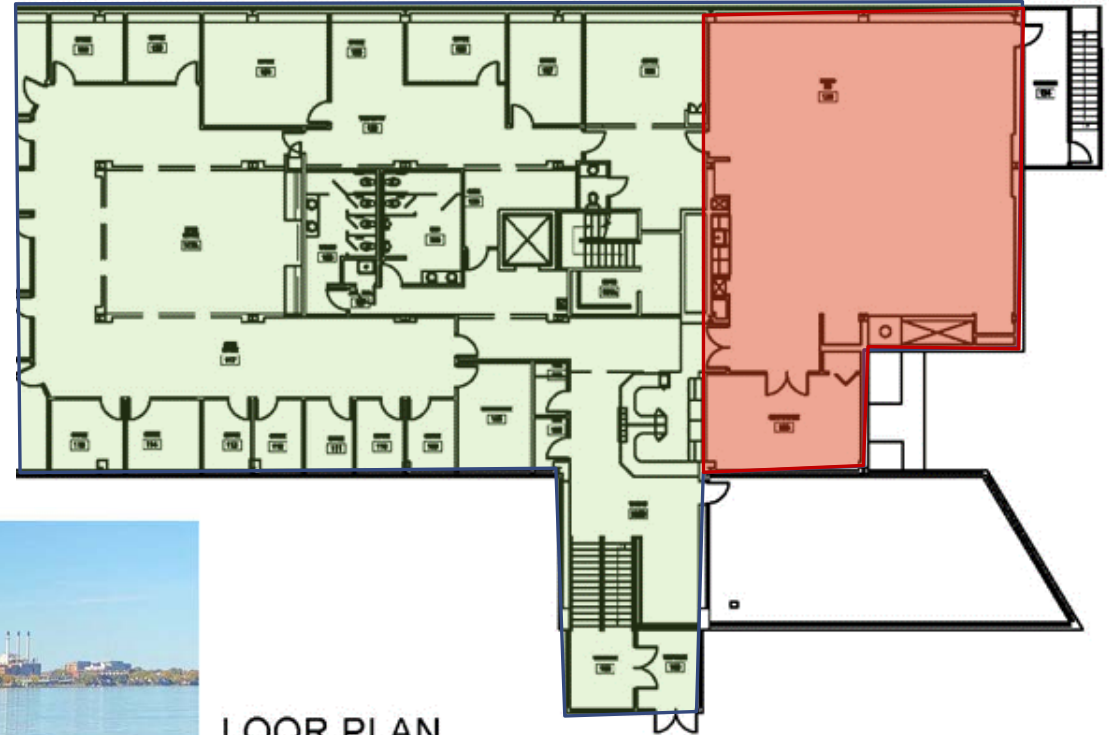
12/15/2020



DRAFT



# FUTURE PHASES



FLOOR PLAN



# FUTURE PLANNING



# QUESTIONS

