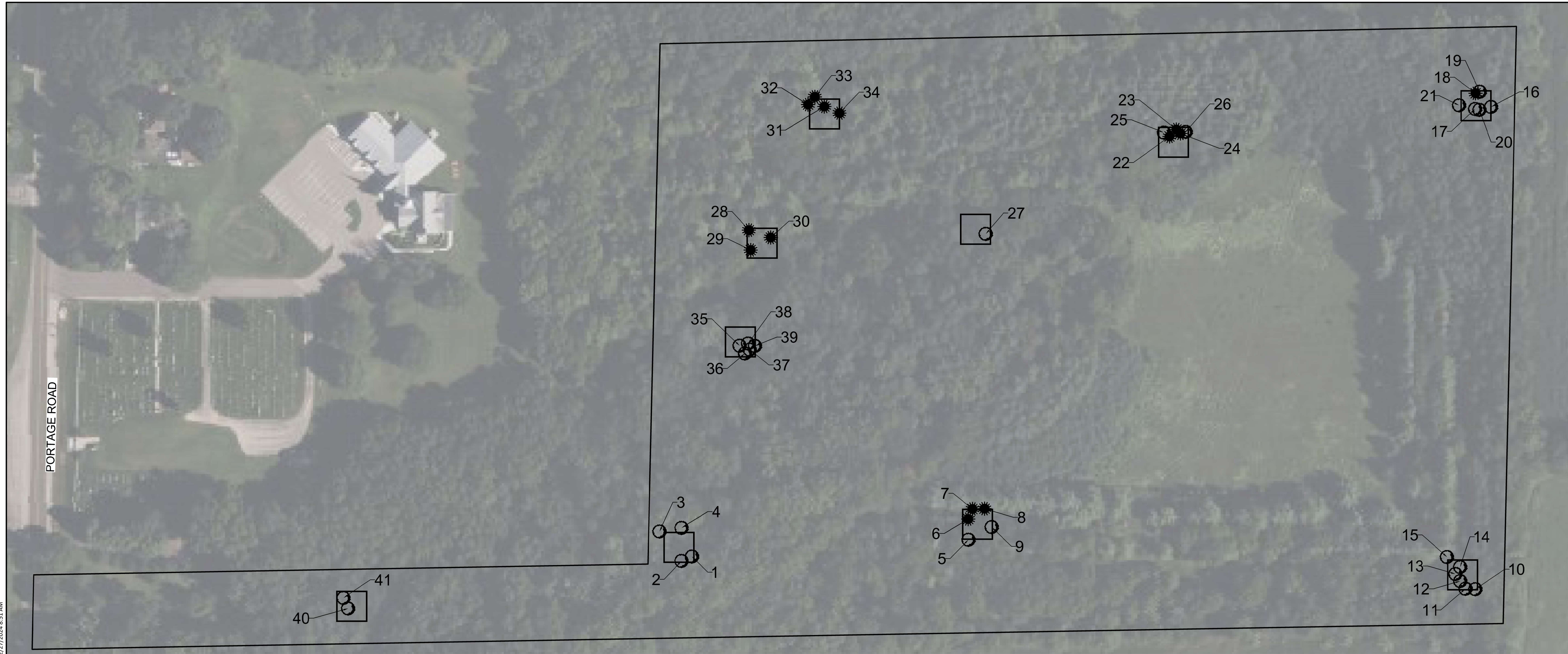
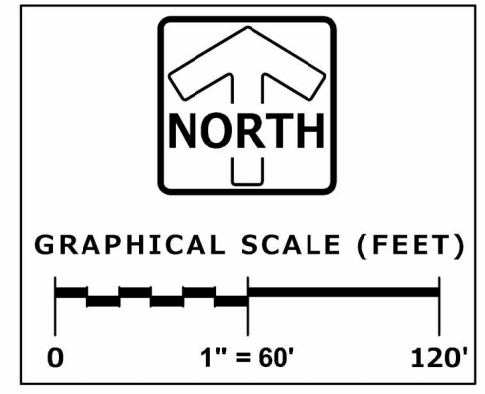


Z:\PROJECTS\2024\5511.00-W\DESIGN\LANDSCAPE\TREE SURVEY\TREE SURVEY SAMPLE PLOTS.DWG 12/27/2024 8:51 AM



| Tree Number | Diameter | Tree Species | Tree Condition | Single / Multistem |
|-------------|----------|---------------------------------|----------------|--------------------|
| 1 | 11 | Celtis Occidentalis - Hackberry | Good | Single Stem |
| 2 | 19 | Quercus - Oak | Fair | Single Stem |
| 3 | 17 | Quercus - Oak | Good | Single Stem |
| 4 | 17 | Celtis Occidentalis - Hackberry | Good | Single Stem |
| 5 | 13 | Ulmus - Elm | Good | Multi-Stem |
| 6 | 11 | Picea - Spruce | Fair | Single Stem |
| 7 | 11 | Picea - Spruce | Fair | Single Stem |
| 8 | 8 | Picea - Spruce | Fair | Single Stem |
| 9 | 9 | Juglans - Black Walnut | Good | Single Stem |
| 10 | 9 | Acer - Maple | Good | Single Stem |
| 11 | 8 | Prunus Serotina - Black Cherry | Good | Single Stem |
| 12 | 8 | Acer - Maple | Good | Single Stem |
| 13 | 12 | Prunus Serotina - Black Cherry | Fair | Multi-Stem |
| 14 | 28 | Prunus Serotina - Black Cherry | Good | Multi-Stem |
| 15 | 8 | Juglans - Black Walnut | Good | Single Stem |
| 16 | 14 | Acer - Maple | Good | Single Stem |
| 17 | 12 | Acer - Boxelder | Good | Single Stem |
| 18 | 15 | Picea - Spruce | Good | Single Stem |
| 19 | 15 | Prunus Serotina - Black Cherry | Good | Single Stem |
| 20 | 8 | Acer - Maple | Good | Single Stem |

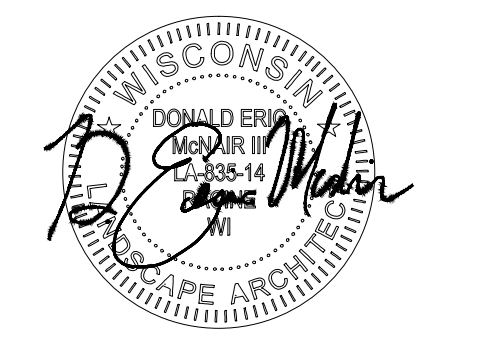
| Tree Number | Diameter | Tree Species | Tree Condition | Single / Multistem |
|-------------|----------|--------------------------------|----------------|--------------------|
| 21 | 14 | Acer - Maple | Good | Multi-Stem |
| 22 | 11 | Pinus - Pine | Fair | Single Stem |
| 23 | 12 | Pinus - Pine | Fair | Single Stem |
| 24 | 15 | Pinus - Pine | Good | Single Stem |
| 25 | 8 | Prunus Serotina - Black Cherry | Good | Single Stem |
| 26 | 14 | Pinus - Pine | Good | Single Stem |
| 27 | 17 | Acer - Maple | Good | Single Stem |
| 28 | 13 | Pinus - Pine | Poor | Single Stem |
| 29 | 15 | Pinus - Pine | Poor | Single Stem |
| 30 | 12 | Pinus - Pine | Poor | Single Stem |
| 31 | 19 | Pinus - Pine | Poor | Single Stem |
| 32 | 11 | Pinus - Pine | Poor | Single Stem |
| 33 | 8 | Pinus - Pine | Poor | Single Stem |
| 34 | 28 | Pinus - Pine | Fair | Multi-Stem |
| 35 | 12 | Acer - Boxelder | Good | Single Stem |
| 36 | 11 | Prunus Serotina - Black Cherry | Good | Single Stem |
| 37 | 18 | Prunus Serotina - Black Cherry | Good | Single Stem |
| 38 | 10 | Carya Ovata - Shagbark Hickory | Good | Single Stem |
| 39 | 10 | Prunus Serotina - Black Cherry | Good | Single Stem |
| 40 | 29 | Quercus - Oak | Good | Single Stem |
| 41 | 32 | Quercus - Oak | Good | Single Stem |



EXISTING TREE SURVEY- 40 X 40 SAMPLE PLOTS

12/27/24

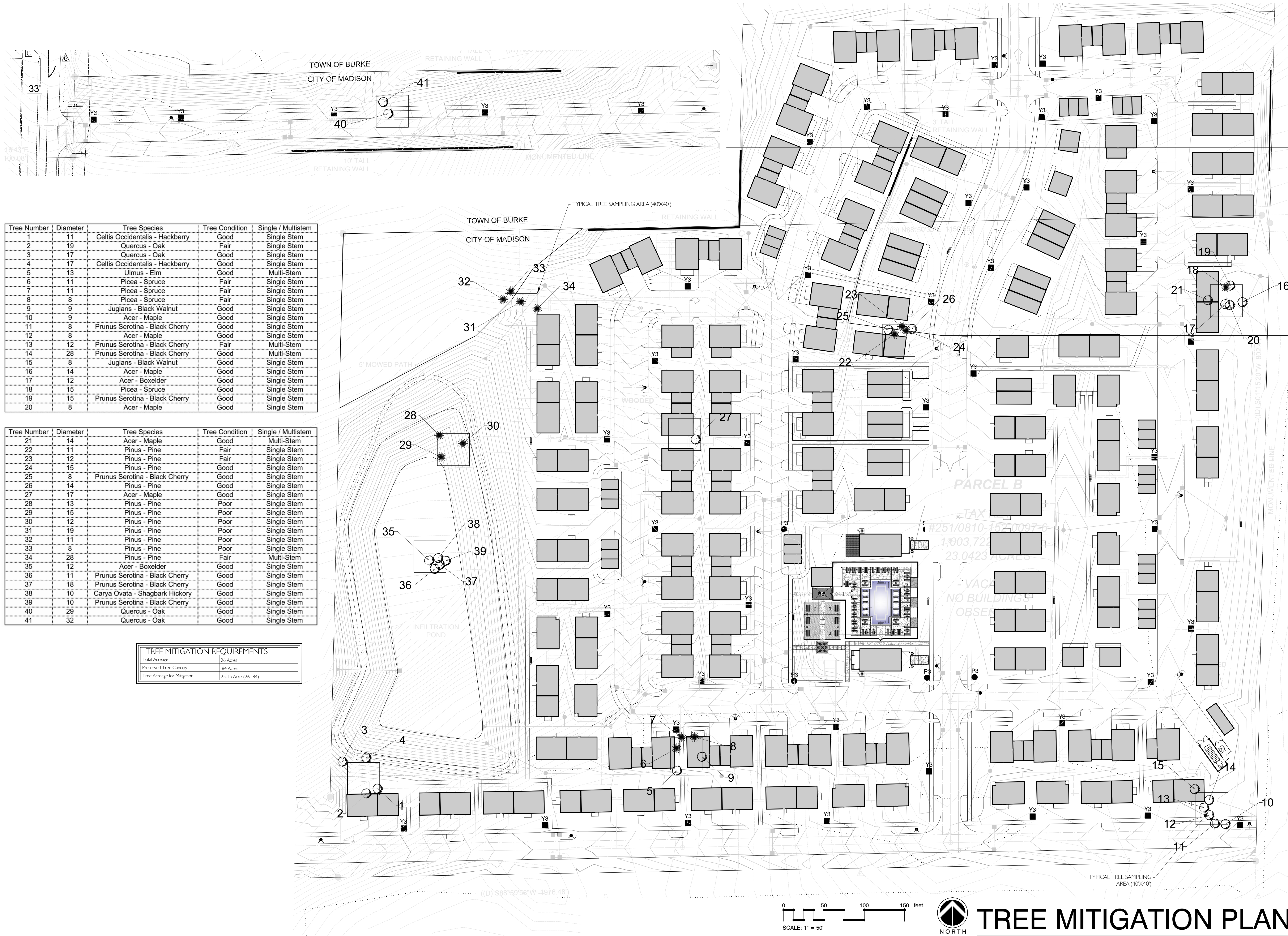
A LANDSCAPE DEVELOPMENT PLAN FOR
LEO - Pumpkin Hollow
Portage Road
Madison, Wisconsin



| | |
|---------------|-------------|
| PROJ. CODE | 24-044 |
| DRAWN BY | DEM |
| REVIEWED BY | DML |
| ISSUED | |
| DATE | DESCRIPTION |
| | |

REVISIONS

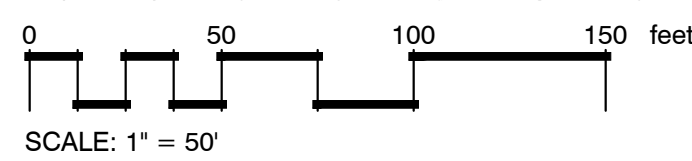
| | |
|--|--|
| | |
| | |
| | |



| Tree Number | Diameter | Tree Species | Tree Condition | Single / Multistem |
|-------------|----------|---------------------------------|----------------|--------------------|
| 1 | 11 | Celtis Occidentalis - Hackberry | Good | Single Stem |
| 2 | 19 | Quercus - Oak | Fair | Single Stem |
| 3 | 17 | Quercus - Oak | Good | Single Stem |
| 4 | 17 | Celtis Occidentalis - Hackberry | Good | Single Stem |
| 5 | 13 | Ulmus - Elm | Good | Multi-Stem |
| 6 | 11 | Picea - Spruce | Fair | Single Stem |
| 7 | 11 | Picea - Spruce | Fair | Single Stem |
| 8 | 8 | Picea - Spruce | Fair | Single Stem |
| 9 | 9 | Juglans - Black Walnut | Good | Single Stem |
| 10 | 9 | Acer - Maple | Good | Single Stem |
| 11 | 8 | Prunus Serotina - Black Cherry | Good | Single Stem |
| 12 | 8 | Acer - Maple | Good | Single Stem |
| 13 | 12 | Prunus Serotina - Black Cherry | Fair | Multi-Stem |
| 14 | 28 | Prunus Serotina - Black Cherry | Good | Multi-Stem |
| 15 | 8 | Juglans - Black Walnut | Good | Single Stem |
| 16 | 14 | Acer - Maple | Good | Single Stem |
| 17 | 12 | Acer - Boxelder | Good | Single Stem |
| 18 | 15 | Picea - Spruce | Good | Single Stem |
| 19 | 15 | Prunus Serotina - Black Cherry | Good | Single Stem |
| 20 | 8 | Acer - Maple | Good | Single Stem |

| Tree Number | Diameter | Tree Species | Tree Condition | Single / Multistem |
|-------------|----------|--------------------------------|----------------|--------------------|
| 21 | 14 | Acer - Maple | Good | Multi-Stem |
| 22 | 11 | Pinus - Pine | Fair | Single Stem |
| 23 | 12 | Pinus - Pine | Fair | Single Stem |
| 24 | 15 | Pinus - Pine | Good | Single Stem |
| 25 | 8 | Prunus Serotina - Black Cherry | Good | Single Stem |
| 26 | 14 | Pinus - Pine | Good | Single Stem |
| 27 | 17 | Acer - Maple | Good | Single Stem |
| 28 | 13 | Pinus - Pine | Poor | Single Stem |
| 29 | 15 | Pinus - Pine | Poor | Single Stem |
| 30 | 12 | Pinus - Pine | Poor | Single Stem |
| 31 | 19 | Pinus - Pine | Poor | Single Stem |
| 32 | 11 | Pinus - Pine | Poor | Single Stem |
| 33 | 8 | Pinus - Pine | Poor | Single Stem |
| 34 | 28 | Pinus - Pine | Fair | Multi-Stem |
| 35 | 12 | Acer - Boxelder | Good | Single Stem |
| 36 | 11 | Prunus Serotina - Black Cherry | Good | Single Stem |
| 37 | 18 | Prunus Serotina - Black Cherry | Good | Single Stem |
| 38 | 10 | Carya Ovata - Shagbark Hickory | Good | Single Stem |
| 39 | 10 | Prunus Serotina - Black Cherry | Good | Single Stem |
| 40 | 29 | Quercus - Oak | Good | Single Stem |
| 41 | 32 | Quercus - Oak | Good | Single Stem |

| TREE MITIGATION REQUIREMENTS | |
|------------------------------|---------------------|
| Total Acreage | 26 Acres |
| Preserved Tree Canopy | 84 Acres |
| Tree Acreage for Mitigation | 25.15 Acres(26-.84) |



TREE MITIGATION PLAN