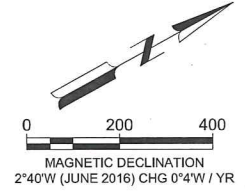


OBSTRUCTIONS RWY 03_F								
NO.	POINT ID	DESCRIPTION	ELEVATION	PENETRATION PART 77	ALLOWABLE PART 77 HT.	PENETRATION TSS SURF	ALLOWABLE TSS SURF HT.	DISPOSITION
3-1	28342	RVR	871.7	12	859.7	---	916.3	EX-NAVAID - (LIGHTED) → (RVR RELOCATED)
3-2	28018	BUILDING	874.9	13	862.0	---	920.3	TO BE LIGHTED
3-3	10123	G.S. ANTENNA	889.6	22	867.6	---	929.9	EX. NAVAID - (LIGHTED)
3-4	17355	BUILDING	913.6	5	908.2	---	998.9	TO BE LIGHTED
3-5	10795	TREE	946.3	36	910.0	---	1002.0	TO BE REMOVED / LOWERED
3-6	17979	TREE	914.8	3	911.6	---	1004.7	TO BE REMOVED / LOWERED
3-7	10195	TREE	924.2	12	911.7	---	1004.8	TO BE REMOVED / LOWERED
3-8	28350	TREE	935.7	19	916.4	---	1012.8	TO BE REMOVED / LOWERED
3-9	17123	TREE	934.4	17	917.3	---	1014.3	TO BE REMOVED / LOWERED
3-10	28366	TREE	931.9	13	918.9	---	1017.1	TO BE REMOVED / LOWERED
3-11	31401	TREE	928.8	9	920.3	---	1019.5	TO BE REMOVED / LOWERED
3-12	10155	TREE	947.6	26	921.6	---	1021.7	TO BE REMOVED / LOWERED
3-13	28398	TREE	949.8	21	928.5	---	1033.3	TO BE REMOVED / LOWERED
3-14	28462	TREE	957.8	27	930.5	---	1036.8	TO BE REMOVED / LOWERED
3-15	10699	TREE	957.4	26	931.3	---	1038.2	TO BE REMOVED / LOWERED
3-16	28430	TREE	960.8	28	932.7	---	1040.5	TO BE REMOVED / LOWERED
3-17	28422	TREE	960.8	28	933.0	---	1041.0	TO BE REMOVED / LOWERED
3-18	28414	TREE	964.0	29	934.8	---	1044.0	TO BE REMOVED / LOWERED
3-20	28446	TREE	960.3	25	935.7	---	1045.6	TO BE REMOVED / LOWERED
3-22	28438	TREE	953.5	16	937.2	---	1048.1	TO BE REMOVED / LOWERED
3-23	31425	TREE	954.6	17	937.4	---	1048.4	TO BE REMOVED / LOWERED
3-24	17139	TREE	959.0	21	938.4	---	1050.1	TO BE REMOVED / LOWERED
3-25	28470	TREE	951.6	13	938.7	---	1050.8	TO BE REMOVED / LOWERED
3-26	31497	TREE	954.9	10	944.8	---	1061.0	TO BE REMOVED / LOWERED
3-27	10659	TREE	963.7	18	945.8	---	1062.8	TO BE REMOVED / LOWERED



DRAWING LEGEND	EXISTING		FUTURE	
	APL	---	---	---
AIRPORT PROPERTY LINE	---	---	---	---
AIRPORT BUILDINGS	---	---	---	---
AIRPORT BUILDINGS (to be removed)	---	---	---	---
AIRFIELD PAVEMENT	---	---	---	---
AIRFIELD PAVEMENT/ROADWAY (to be removed)	---	---	---	---
PAVED ROADS	---	---	---	---
PART 77 APPROACH SURFACE	---	---	---	(SAME)
THRESHOLD SITING: APPROACH SURFACE	---	---	---	(SAME)
THRESHOLD SITING: DEPARTURE SURFACE	---	---	---	(SAME)
RUNWAY PROTECTION ZONE	---	---	---	(SAME)
BUILDING RESTRICTION LINE	---	---	---	N/A
RUNWAY SAFETY AREA	---	---	---	(SAME)
RUNWAY OBJECT FREE AREA	---	---	---	(SAME)
RUNWAY VISIBILITY ZONE	---	---	---	FRVZ
RUNWAY OBSTACLE FREE ZONE	---	---	---	(SAME)
PRECISION OBSTACLE FREE ZONE (POFZ)	---	---	---	(SAME)
GLIDESLOPE CRITICAL AREA	---	---	---	(SAME)
LOCALIZER CRITICAL AREA	---	---	---	(SAME)
TAXIWAY SAFETY AREA	---	---	---	(SAME)
TAXIWAY OBJECT FREE AREA	---	---	---	(SAME)
OBSTRUCTION - GROUP OF TREES	---	---	---	(SAME)
OBSTRUCTION - TERRAIN	---	---	---	(SAME)
FENCE	---	---	---	---
GROUND CONTOURS	---	---	---	N/A

NOTES
1. SEE DATA SHEET FOR BUILDING LEGEND.

REVISIONS			
NO.	ITEM	BY	DATE

Dane County Regional Airport
Madison, Wisconsin

INNER PORTION
OF THE APPROACH SURFACE DRAWING
Future Runway 03 - Plan View

Mead and Hunt, Inc.

2440 Deming Way
Middleton, WI 53562
phone: 608-273-6380
meadhunt.com

DATE
JAN 2017

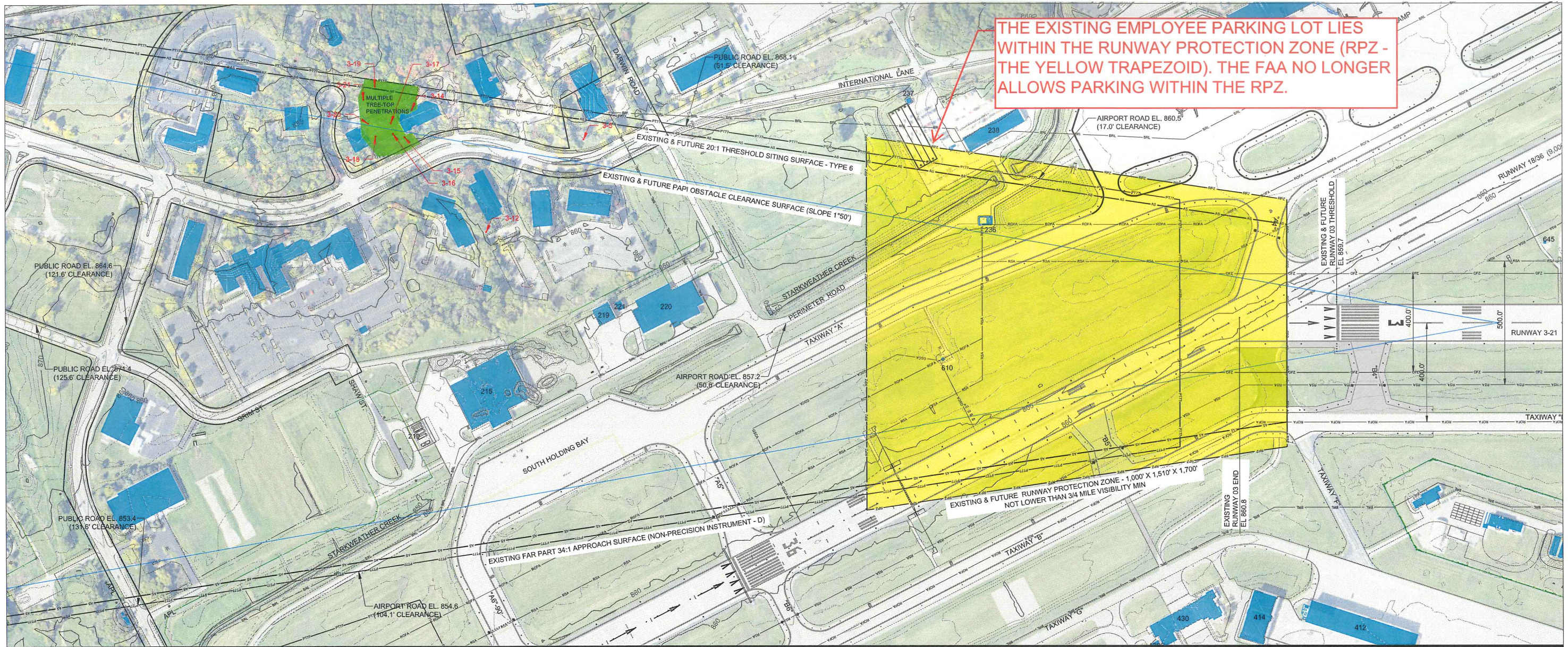
SCALE
N/A

SHEET NO.
19 of 41

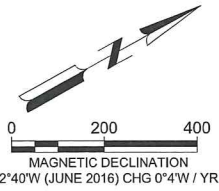
FINAL

These documents shall not be used for any purpose or project for which it is not intended. Mead & Hunt shall be indemnified by the client and held harmless from all claims, damages, liabilities, losses, and expenses, including attorney's fees and costs, arising out of such misuse or reuse of the documents. In addition, unauthorized reproduction of these documents, in part or as a whole, is prohibited.

The preparation of these documents was financed in part through a planning grant from the Federal Aviation Administration as provided under Section 505 of the Airport and Airway Improvement Act of 1982, as amended. The contents of this plan do not necessarily reflect the official views or policy of the FAA or the Wisconsin Department of Transportation Bureau of Aeronautics (BICA). Acceptance of this document by the FAA and the BICA does not in any way constitute a commitment on the part of the United States or the State of Wisconsin to participate in any development depicted herein nor does it indicate that the proposed development is environmentally acceptable in accordance with appropriate public laws.



THE EXISTING EMPLOYEE PARKING LOT LIES WITHIN THE RUNWAY PROTECTION ZONE (RPZ - THE YELLOW TRAPEZOID). THE FAA NO LONGER ALLOWS PARKING WITHIN THE RPZ.



OBSTRUCTIONS RWY 03_EX

NO.	POINT ID	DESCRIPTION	ELEVATION	PENETRATION PART 77	ALLOWABLE PART 77 HT.	PENETRATION TSS SURFACE	ALLOWABLE TSS SURF HT.	DISPOSITION
3-5	10795	TREE	946.3	14	855.1	----	1002.0	TO BE LOWERED / REMOVED
3-12	10155	TREE	947.6	4	855.3	----	1021.7	TO BE LOWERED / REMOVED
3-14	28462	TREE	957.8	5	855.3	----	1036.8	TO BE LOWERED / REMOVED
3-15	10699	TREE	957.4	4	855.4	----	1038.2	TO BE LOWERED / REMOVED
3-16	28430	TREE	960.8	6	855.4	----	1040.5	TO BE LOWERED / REMOVED
3-17	28422	TREE	960.8	6	855.4	----	1041.0	TO BE LOWERED / REMOVED
3-18	28414	TREE	964.0	7	855.4	----	1044.0	TO BE LOWERED / REMOVED
3-19	28454	TREE	966.0	9	855.5	N/A	N/A	TO BE LOWERED / REMOVED
3-20	28446	TREE	960.3	3	855.5	----	1045.6	TO BE LOWERED / REMOVED
3-21	10691	TREE	962.2	4	855.5	----	1046.5	TO BE LOWERED / REMOVED

DRAWING LEGEND

	EXISTING	FUTURE
AIRPORT PROPERTY LINE	APL	
AIRPORT BUILDINGS		
AIRPORT BUILDINGS (to be removed)	N/A	
AIRFIELD PAVEMENT		
AIRFIELD PAVEMENT/ROADWAY (to be removed)	N/A	
PAVED ROADS		
PART 77 APPROACH SURFACE	PT77	(SAME)
THRESHOLD SITING: APPROACH SURFACE	AS	(SAME)
THRESHOLD SITING: DEPARTURE SURFACE	DS	(SAME)
RUNWAY PROTECTION ZONE	RPZ	(SAME)
BUILDING RESTRICTION LINE	N/A	N/A
RUNWAY SAFETY AREA	RSA	(SAME)
RUNWAY OBJECT FREE AREA	ROFA	(SAME)
RUNWAY VISIBILITY ZONE	RVZ	(SAME)
RUNWAY OBSTACLE FREE ZONE	OFZ	(SAME)
PRECISION OBSTACLE FREE ZONE (POFZ)		(SAME)
GLIDESLOPE CRITICAL AREA	CSCA	(SAME)
LOCALIZER CRITICAL AREA	LOCA	(SAME)
TAXIWAY SAFETY AREA	TSA	(SAME)
TAXIWAY OBJECT FREE AREA	TOFA	(SAME)
OBSTRUCTION - GROUP OF TREES		(SAME)
OBSTRUCTION - TERRAIN		(SAME)
FENCE		
GROUND CONTOURS		N/A

NOTES

- SEE DATA SHEET FOR BUILDING LEGEND.

REVISIONS

NO.	ITEM	BY	DATE

**Dane County Regional Airport
Madison, Wisconsin
INNER PORTION
OF THE APPROACH SURFACE DRAWING
Existing Runway 03 - Plan View**



2440 Deming Way
Middleton, WI 53562
phone: 608-273-6380
meadhunt.com

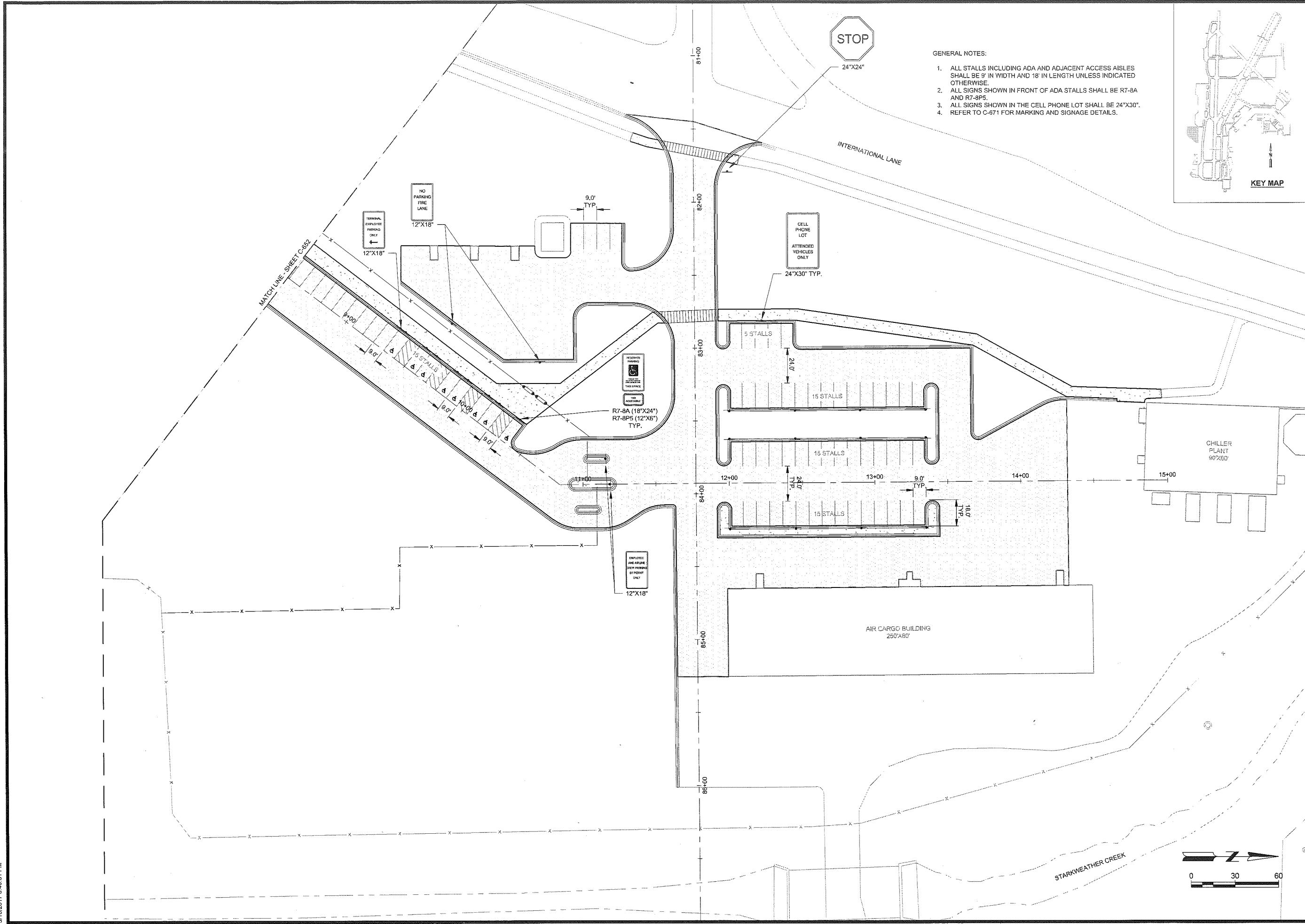
These documents shall not be used for any purpose or project for which it is not intended. Mead & Hunt shall be indemnified by the client and held harmless from all claims, damages, liabilities, losses, and expenses, including attorney's fees and costs, arising out of such misuse or reuse of the documents. In addition, unauthorized reproduction of these documents, in part or as a whole, is prohibited.

DATE: JAN 2017
SCALE: N/A
SHEET NO.: 18 of 41

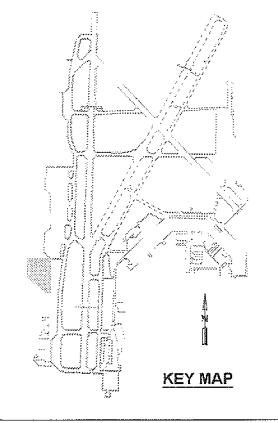
FINAL

The preparation of these documents was financed in part through a planning grant from the Federal Aviation Administration as provided under Section 505 of the Airport and Airway Improvement Act of 1982, as amended. The contents of this plan do not necessarily reflect the official views or policy of the FAA or the Wisconsin Department of Transportation Bureau of Aeronautics (BDA). Acceptance of this document by the FAA and the BDA does not in any way constitute a commitment on the part of the United States or the State of Wisconsin to participate in any development decided herein nor does it indicate that the proposed development is environmentally acceptable in accordance with appropriate public laws.

X:\2309936\161532.01\TECH\DRAWINGS\C-653 MARKING AND SIGNAGE PLAN - CELL PHONE LOT.DWG
3/10/2017 6:40:51 PM



- GENERAL NOTES:
1. ALL STALLS INCLUDING ADA AND ADJACENT ACCESS AISLES SHALL BE 9' IN WIDTH AND 18' IN LENGTH UNLESS INDICATED OTHERWISE.
 2. ALL SIGNS SHOWN IN FRONT OF ADA STALLS SHALL BE R7-8A AND R7-8P5.
 3. ALL SIGNS SHOWN IN THE CELL PHONE LOT SHALL BE 24"X30".
 4. REFER TO C-671 FOR MARKING AND SIGNAGE DETAILS.



Mead & Hunt
Mead and Hunt, Inc.
2440 Deming Way
Middleton, WI 53562
phone: 608-273-6380
meadhunt.com

DANE COUNTY REGIONAL AIRPORT
MADISON

These documents shall not be used for any purpose or project for which it is not intended. Mead & Hunt shall be indemnified by the client and held harmless from all claims, damages, liabilities, losses, and expenses, including attorney's fees and costs, arising out of such misuse or reuse of the documents. In addition, unauthorized reproduction of these documents, in part or as a whole, is prohibited.

**DANE COUNTY REGIONAL AIRPORT
CONSTRUCT EMPLOYEE PARKING
LOT AND MISC. IMPROVEMENTS**
4000 INTERNATIONAL LANE
MADISON, WI 53704

ISSUED

95% SUBMITTAL

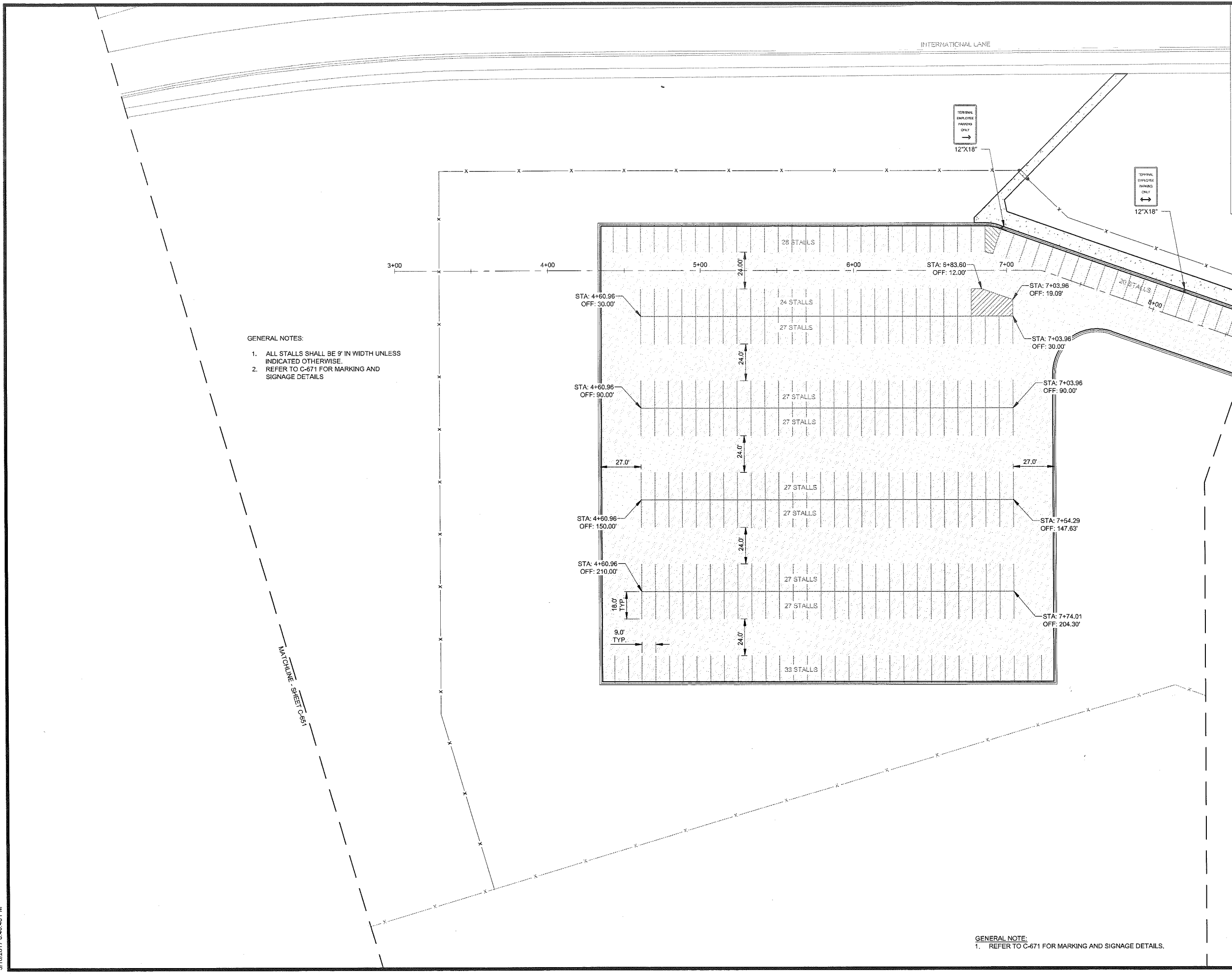
PROJ. NO.: MSN 1002
MSH NO.: 2309936-161532.01
DATE: February 21, 2017
DESIGNED BY: L/JN
DRAWN BY: DLU
CHECKED BY: CAR
DO NOT SCALE DRAWINGS

SHEET CONTENTS
MARKING AND SIGNAGE PLAN - CELL PHONE LOT

SHEET NO. 1 of X

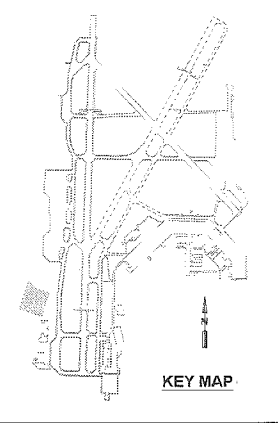
C-653

X:\2309936\161532.01\TECH\DRAWINGS\C-653 MARKING AND SIGNAGE PLAN - CELL PHONE LOT.DWG
3/10/2017 8:40:46 PM



GENERAL NOTES:
1. ALL STALLS SHALL BE 9' IN WIDTH UNLESS INDICATED OTHERWISE.
2. REFER TO C-671 FOR MARKING AND SIGNAGE DETAILS

GENERAL NOTE:
1. REFER TO C-671 FOR MARKING AND SIGNAGE DETAILS.



Mead & Hunt
Mead and Hunt, Inc.
2440 Deming Way
Middleton, WI 53562
phone: 608-273-6380
meadhunt.com

DANE COUNTY
REGIONAL AIRPORT
MADISON

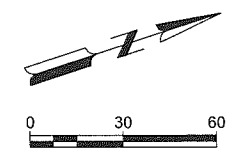
These documents shall not be used for any purpose or project for which it is not intended. Mead & Hunt shall be indemnified by the client and hold harmless from all claims, damages, liabilities, losses, and expenses, including attorney's fees and costs, arising out of such misuse or reuse of the documents. In addition, unauthorized reproduction of these documents, in part or as a whole, is prohibited.

**DANE COUNTY REGIONAL AIRPORT
CONSTRUCT EMPLOYEE PARKING
LOT AND MISC. IMPROVEMENTS**
4000 INTERNATIONAL LANE
MADISON, WI 53704

ISSUED

95% SUBMITTAL

PROJ. NO.: MSN 1002
MH NO.: 2309936-161532.01
DATE: February 21, 2017
DESIGNED BY: LUN
DRAWN BY: DLU
CHECKED BY: CAR
DO NOT SCALE DRAWINGS



SHEET CONTENTS
MARKING AND SIGNAGE PLAN - EMPLOYEE PARKING LOT

SHEET NO. 1 of X
C-652