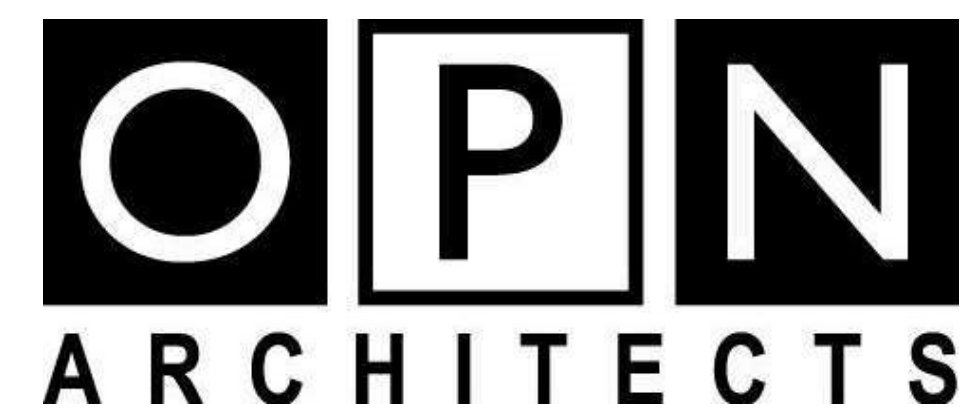




CITY OF MADISON - MADISON FIRE STATION 6 REMODEL

825 W BADGER RD, MADISON, WI 53713



301 N BROOM STREET #100, MADISON, WI 53703
 P. 608.819.0260 F. 608.819.0261 www.opnarchitects.com

CIVIL ENGINEER

JSD PROFESSIONAL SERVICES, INC.
 161 HORIZON DR #101
 VERONA, WI 53593

LANDSCAPE ARCHITECT

JSD PROFESSIONAL SERVICES, INC.
 161 HORIZON DR #101
 VERONA, WI 53593

STRUCTURAL ENGINEER

STRATEGIC STRUCTURAL DESIGN
 725 HEARTLAND TRAIL #203
 MADISON, WI 53717

ARCHITECT

OPN ARCHITECTS
 100 COURT AVENUE
 DES MOINES, IA 50309

ELECTRICAL ENGINEER

DESIGN ENGINEERS
 437 S YELLOWSTONE DR #110
 MADISON, WI 53719



Project
MADISON FIRE STATION 6 REMODEL
825 W BADGER RD
MADISON, WI 53713

Civil Engineer
JSD PROFESSIONAL SERVICES, INC.
161 HORIZON DR #101
VERONA, WI 53593
P: 608-848-5060

Landscape Architect
JSD PROFESSIONAL SERVICES, INC.
161 HORIZON DR #101
VERONA, WI 53593
P: 608-848-5060

Structural Engineer
STRATEGIC STRUCTURAL DESIGN
725 HEARTLAND TRAIL #203
MADISON, WI 53717
P: 608-841-1859

MEP/FP Engineer
DESIGN ENGINEERS
437 S YELLOWSTONE DR #110
MADISON, WI 53719
P: 608-424-8815

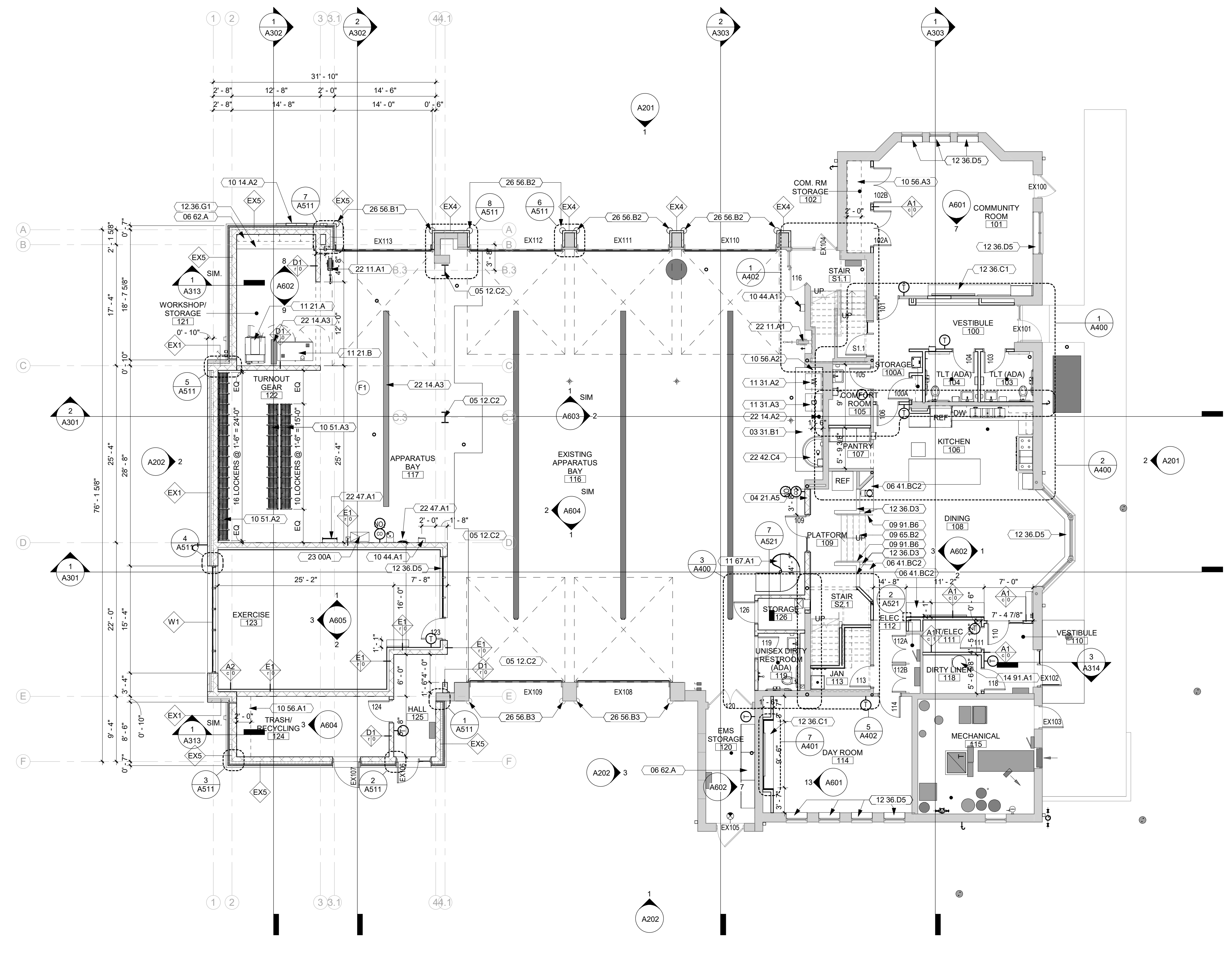
Revision	Description	Date

GENERAL NOTES

- EXISTING BUILDING CONDITIONS SHOWN ON THESE DRAWINGS ARE DERIVED FROM ORIGINAL BUILDING DRAWINGS AND LIMITED FIELD OBSERVATION.
- FIELD VERIFY ALL DIMENSIONS AND EXISTING CONDITIONS - TYPICAL FOR ALL DRAWINGS.
- DIMENSIONS ARE MEASURED FACE-OF-FINISH TO FACE-OF-FINISH OR ROUGH MASONRY OPENING UNLESS NOTED OTHERWISE - TYPICAL FOR ALL DRAWINGS.
- IN THE EVENT OF A DISCREPANCY BETWEEN ARCHITECTURAL AND CONSULTANT DRAWINGS, NOTIFY ARCHITECT IMMEDIATELY PRIOR TO COMMENCING WORK - TYPICAL FOR ALL DRAWINGS.
- ALL PENETRATIONS IN FIRE RATED FLOORS AND WALLS MUST BE SEALED WITH APPROPRIATE FIRESTOPPING SYSTEM.
- PATCH AND REPAIR EXISTING FLOOR SLABS AND WALL SURFACES DAMAGED FROM DEMOLITION.
- PATCH ALL CUT FLOOR SLABS DUE TO TRENCHING FOR NEW MEP WORK WITH NEW MATERIAL TO MATCH EXISTING FLOOR ASSEMBLY.
- PROVIDE CONCEALED WOOD BLOCKING AT ALL ACCESSORIES AND CASEWORK LOCATIONS, EXTEND BLOCKING A MINIMUM OF 6" BEYOND EACH END AND 6" ABOVE AND BELOW ALL ACCESSORY ITEMS.
- ALL MECHANICAL, ELECTRICAL, AND PLUMBING FIXTURES ARE SHOWN FOR COORDINATION PURPOSE ONLY. REFER TO DISCIPLINE FOR ADDITIONAL INFORMATION.
- ALL DOOR FRAMES TO BE LOCATED 4" FROM FINISH FACE OF WALL UNLESS NOTED OTHERWISE.
- REFER TO ENLARGED FLOOR PLANS AND INTERIOR DRAWINGS FOR ADDITIONAL FINISH INFORMATION.
- MOUNT REQUIRED ACCESSIBLE TOILET ACCESSORIES PER ADA GUIDELINES.

KEYNOTE LEGEND

- 03 31.B1 CONCRETE SLAB ON GRADE - REFER TO STRUCTURAL
- 04 21.A5 INFILL WALL TO MATCH ADJACENT WALL ASSEMBLY AND FINISH
- 05 12.C2 EXPOSED STRUCTURAL STEEL COLUMN, PAINT P-1 - REFER TO STRUCTURAL
- 06 41.BC2 QUARTZ Q-2 COUNTER & PLAM-1 BASE CABINETS
- 06 62.A HEAVY DUTY METAL STORAGE CABINETS
- 09 65.B2 ONE PIECE PREFORMED RUBBER STAIR TREAD AND RISER, R-2 ON EXISTING STAIR
- 09 91.B6 PAINT EXISTING GUARD/HAND RAIL, P-2
- 10 14.A2 SURFACE MOUNTED EXTERIOR ILLUMINATED LETTER BUILDING SIGN. PROVIDE POWER. REFER TO DETAIL 4/A502.
- 10 44.A1 SURFACE MOUNTED FIRE EXTINGUISHER CABINET
- 10 51.A2 TURNOUT GEAR LOCKER
- 10 51.A3 TURNOUT GEAR LOCKER W/ TUBULAR FRAME WALL STRUCTURE
- 10 56.A1 (5) HEAVY DUTY ADJUSTABLE SHELVING AND STANDARDS
- 10 56.A2 HEAVY DUTY SHELF AND STANDARDS
- 10 56.A3 (3) HEAVY DUTY ADJUSTABLE SHELVING AND STANDARDS @ 4'-6" AFF
- 11 21.A EXTRACTOR, OFCI
- 11 21.B DRYER CABINET, OFCI
- 11 31.A2 WASHING MACHINE W/ PEDESTAL BASE, OFCI
- 11 31.A3 VENTLESS DRYER W/ PEDESTAL BASE, OFCI
- 11 67.A1 FIRE SLIDE AND LANDING
- 12 36.C1 PLAM-2 COUNTER TOP
- 12 36.D3 QUARTZ Q-2 WALL CAP
- 12 36.D5 QUARTZ Q-2 WINDOW SILL, SHIM AS NECESSARY
- 12 36.G1 BUTCHER BLOCK WORKBENCH TOP
- 14 91.A1 LINEN CHUTE
- 22 11.A1 HOSE BIB - REFER TO PLUMBING DRAWINGS
- 22 14.A2 FLOOR DRAIN - SEE PLUMBING DRAWINGS
- 22 14.A3 TRENCH DRAIN, REFER TO PLUMBING DRAWINGS
- 22 42.C4 FOOT OPERATED HAND WASHING STATION, REFER TO PLUMBING DRAWINGS
- 22 47.A1 ADA DRINKING FOUNTAIN W/ BOTTLE FILLER, REFER TO PLUMBING
- 23 00A EXPOSED DUCT, PAINT P-1
- 26 56.B1 HEAVY DUTY 3/4 ROUND WHEEL GUARD, HIGH PERFORMANCE PAINT P-2
- 26 56.B2 REINSTALL SALVAGED HEAVY DUTY 3/4 ROUND WHEEL GUARD, CLEAN AND PREP SURFACE FOR HIGH PERFORMANCE PAINT P-2
- 26 56.B3 EXISTING WHEEL GUARD, CLEAN AND PREP SURFACE FOR HIGH PERFORMANCE PAINT P-2



1 LEVEL 1 FLOOR PLAN
1/8" = 1'-0"

PRELIMINARY. NOT FOR CONSTRUCTION.



Project
MADISON FIRE STATION 6 REMODEL
825 W BADGER RD
MADISON, WI 53713

Civil Engineer
JSD PROFESSIONAL SERVICES, INC.
161 HORIZON DR #101
VERONA, WI 53593
P: 608-848-5060

Landscape Architect
JSD PROFESSIONAL SERVICES, INC.
161 HORIZON DR #101
VERONA, WI 53593
P: 608-848-5060

Structural Engineer
STRATEGIC STRUCTURAL DESIGN
725 HEARTLAND TRAIL #203
MADISON, WI 53717
P: 608-841-1859

MEP/FP Engineer
DESIGN ENGINEERS
437 S YELLOWSTONE DR #110
MADISON, WI 53719
P: 608-424-8815

Revision	Description	Date

OPN Project No.
21613000

Sheet Issue Date
90% CONSTRUCTION DOCUMENTS 11/19/2021

Sheet Name
LEVEL 2 FLOOR PLAN

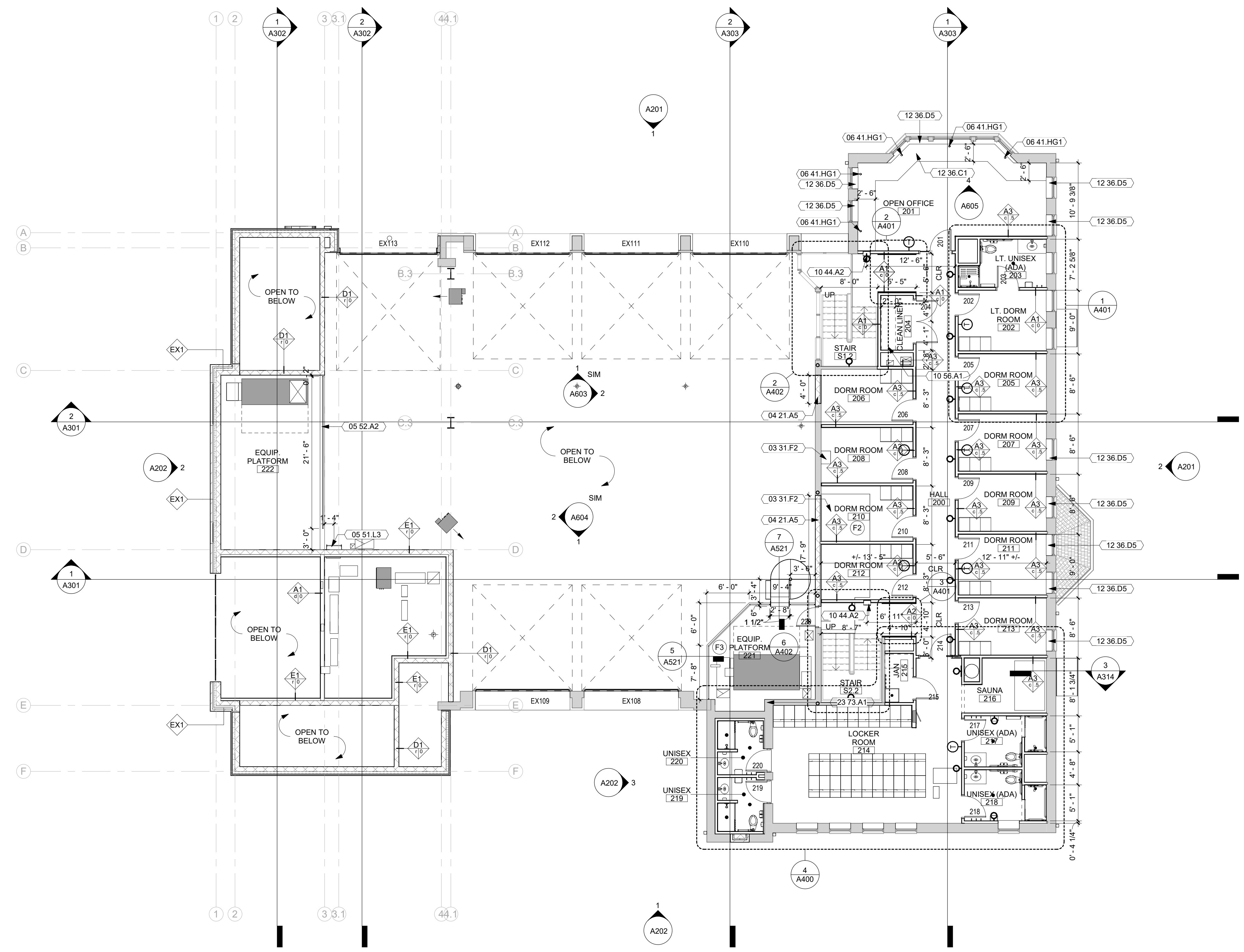
Sheet Number
A102

GENERAL NOTES

- EXISTING BUILDING CONDITIONS SHOWN ON THESE DRAWINGS ARE DERIVED FROM ORIGINAL BUILDING DRAWINGS AND LIMITED FIELD OBSERVATION.
- FIELD VERIFY ALL DIMENSIONS AND EXISTING CONDITIONS - TYPICAL FOR ALL DRAWINGS.
- DIMENSIONS ARE MEASURED FACE-OF-FINISH TO FACE-OF-FINISH OR ROUGH MASONRY OPENING UNLESS NOTED OTHERWISE - TYPICAL FOR ALL DRAWINGS.
- IN THE EVENT OF A DISCREPANCY BETWEEN ARCHITECTURAL AND CONSULTANT DRAWINGS, NOTIFY ARCHITECT IMMEDIATELY PRIOR TO COMMENCING WORK - TYPICAL FOR ALL DRAWINGS.
- ALL PENETRATIONS IN FIRE RATED FLOORS AND WALLS MUST BE SEALED WITH APPROPRIATE FIRESTOPPING SYSTEM.
- PATCH AND REPAIR EXISTING FLOOR SLABS AND WALL SURFACES DAMAGED FROM DEMOLITION.
- PATCH ALL CUT FLOOR SLABS DUE TO TRENCHING FOR NEW MEP WORK WITH NEW MATERIAL TO MATCH EXISTING FLOOR ASSEMBLY.
- PROVIDE CONCEALED WOOD BLOCKING AT ALL ACCESSORIES AND CASEWORK LOCATIONS. EXTEND BLOCKING A MINIMUM OF 6" BEYOND EACH END AND 6" ABOVE AND BELOW ALL ACCESSORY ITEMS.
- ALL MECHANICAL, ELECTRICAL, AND PLUMBING FIXTURES ARE SHOWN FOR COORDINATION PURPOSE ONLY. REFER TO DISCIPLINE FOR ADDITIONAL INFORMATION.
- ALL DOOR FRAMES TO BE LOCATED 4" FROM FINISH FACE OF WALL UNLESS NOTED OTHERWISE.
- REFER TO ENLARGED FLOOR PLANS AND INTERIOR DRAWINGS FOR ADDITIONAL FINISH INFORMATION.
- MOUNT REQUIRED ACCESSIBLE TOILET ACCESSORIES PER ADA GUIDELINES.

KEYNOTE LEGEND

- | | |
|-----------|---|
| 03 31.F2 | CONCRETE SLAB ON METAL DECK INFILL - SEE STRUCTURAL |
| 04 21.A5 | INFILL WALL TO MATCH ADJACENT WALL ASSEMBLY AND FINISH |
| 05 51.L3 | WALL MOUNTED EQUIP. PLATFORM ACCESS LADDER, PAINT P-2 |
| 05 52.A2 | TWO PIPE (1 1/2"Ø) STEEL GUARDRAIL W/ 1 1/2"Ø POSTS AT 5'-0" MAX. PAINT P-2 |
| 06 41.HG1 | COUNTER GROMMET. LOCATE EXACT LOCATION IN FIELD W/ OWNER/ARCHITECT |
| 10 44.A2 | SEMI-RECESSED FIRE EXTINGUISHER CABINET |
| 10 56.A1 | (5) HEAVY DUTY ADJUSTABLE SHELVING AND STANDARDS |
| 12 36.C1 | PLAM-2 COUNTERTOP |
| 12 36.D5 | QUARTZ Q-2 WINDOW SILL, SHIM AS NECESSARY |
| 23 73.A1 | MECHANICAL EQUIPMENT - REFER TO MECHANICAL DRAWINGS |



1 LEVEL 2 FLOOR PLAN
1/8" = 1'-0"

PRELIMINARY. NOT FOR CONSTRUCTION.



GENERAL NOTES

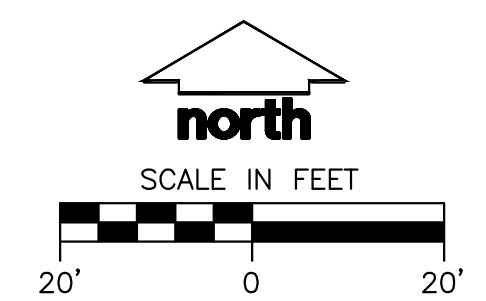
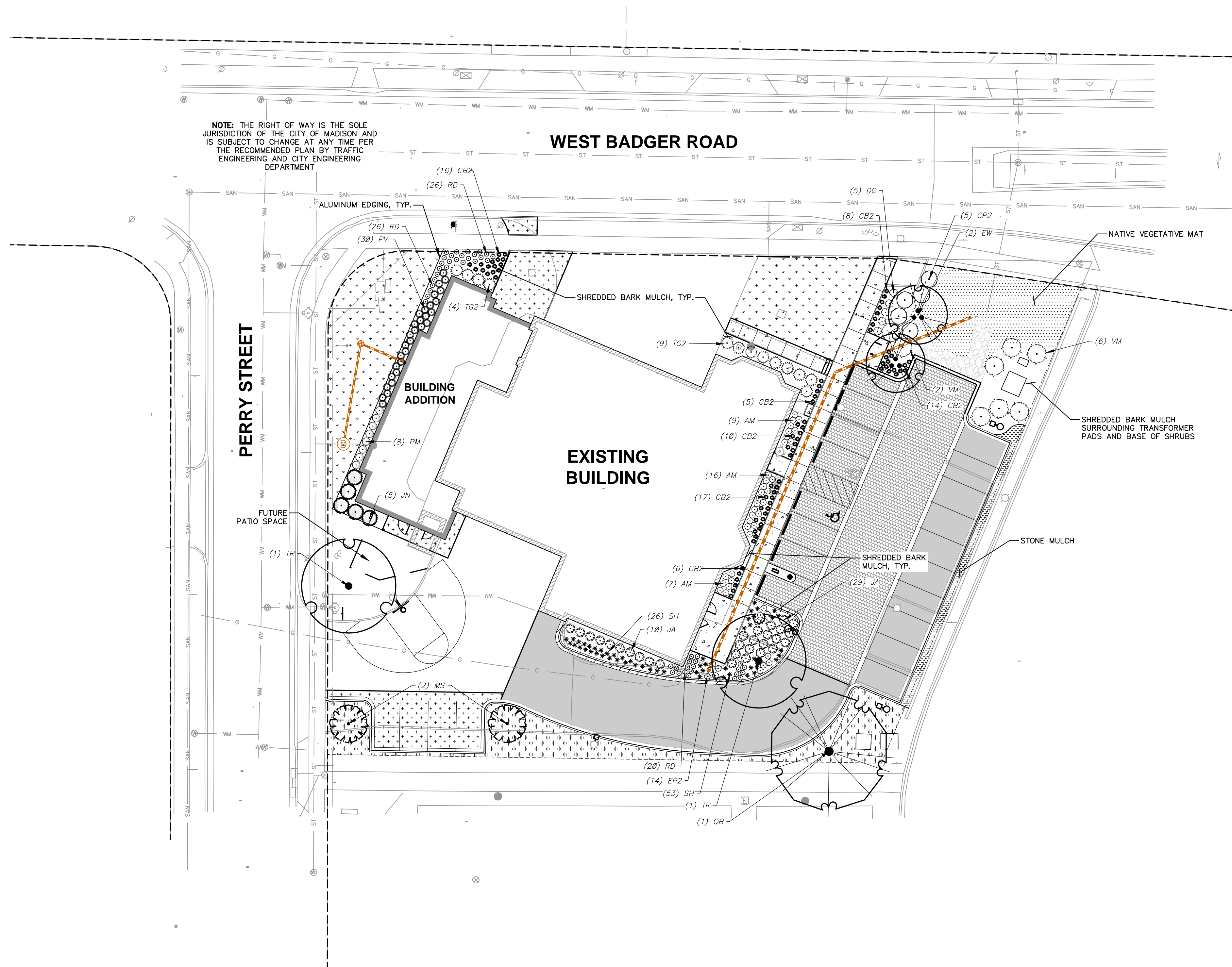
- REFER TO THE EXISTING CONDITIONS SURVEY FOR EXISTING CONDITIONS NOTES AND LEGEND.
- ALL WORK IN THE ROW SHALL BE IN ACCORDANCE WITH THE MUNICIPAL STANDARD SPECIFICATIONS FOR PUBLIC WORKS CONSTRUCTION.
- JSD SHALL BE HELD HARMLESS AND DOES NOT WARRANT ANY DEVIATIONS BY THE OWNER/CONTRACTOR FROM THE APPROVED CONSTRUCTION PLANS THAT MAY RESULT IN DISCIPLINARY ACTIONS BY ANY OR ALL REGULATORY AGENCIES.
- DRAWING FOR REVIEW – NOT FOR CONSTRUCTION UNLESS OTHERWISE NOTED IN THE TITLE BLOCK.
- THE LANDSCAPE CONTRACTOR SHALL COORDINATE ALL FINE GRADING AND TOPSOILING WITH GENERAL CONTRACTOR
- REFER TO "LANDSCAPE DETAILS AND NOTES" SHEET FOR ADDITIONAL DETAILS, NOTES AND SPECIFICATION INFORMATION INCLUDING MATERIALS, GUARANTEE AND EXECUTION RELATED TO LANDSCAPE PLAN
- CONTRACTOR SHALL REVIEW SITE CONDITIONS FOR UTILITY CONFLICTS, DRAINAGE ISSUES, SUBSURFACE ROCK, AND PLANT PLACEMENT CONFLICTS PRIOR TO PLANT INSTALLATION. REPORT ANY CONDITIONS THAT MAY HAVE ADVERSE IMPACT ON PLANTING OPERATIONS TO LANDSCAPE ARCHITECT
- DO NOT COMMENCE PLANTING OPERATIONS UNTIL ALL ADJACENT SITE IMPROVEMENTS, IRRIGATION INSTALLATION (IF APPLICABLE), AND FINISH GRADING ARE COMPLETE

LEGEND

---	PROPERTY LINE	=====	CONCRETE PAVEMENT
- - - - -	RIGHT-OF-WAY	=====	HEAVY DUTY CONCRETE PAVEMENT
- · - · -	EASEMENT LINE	=====	BIKE RACK
---	BUILDING OUTLINE	---	EXISTING SANITARY SEWER
- - - - -	BUILDING OVERHANG	---	EXISTING WATERMAIN
---	BUILDING SETBACK LINE	---	EXISTING STORM SEWER
---	PAVEMENT SETBACK LINE	---	ALUMINUM EDGING
---	EDGE OF PAVEMENT	=====	NATIVE VEGETATIVE MAT
---	STANDARD CURB AND GUTTER	=====	STONE MULCH
---	REJECT CURB AND GUTTER	=====	SEED, FERTILIZER, & MULCH
---	8" CONCRETE RIBBON CURB	=====	SOD

PLANT SCHEDULE

ORNAMENTAL TREES	CODE	BOTANICAL / COMMON NAME	CONT	SIZE	QTY
	EW	<i>Euonymus atropurpureus</i> / Eastern Wahoo	B & B	1.5" Cal (Multi-Stem)	2
	MS	<i>Malus x 'Spring Snow'</i> / Spring Snow Crabapple	B & B	1.5" Cal	2
OVERSTORY DECIDUOUS TREES	CODE	BOTANICAL / COMMON NAME	CONT	SIZE	QTY
	OB	<i>Quercus bicolor</i> / Swamp White Oak	B & B	2" Cal	1
	TR	<i>Tilia americana 'Redmond'</i> / Redmond American Linden	B & B	2.5" Cal	2
UPRIGHT EVERGREEN SHRUB	CODE	BOTANICAL / COMMON NAME	CONT	SIZE	QTY
	JN	<i>Juniperus virginiana 'J.N. Select Green'</i> TM / Emerald Feather Eastern Red Cedar	B & B	Min. 5' tall	5
DECIDUOUS SHRUBS	CODE	BOTANICAL / COMMON NAME	CONT	SIZE	QTY
	AM	<i>Aronia melanocarpa 'UCONNAM165'</i> TM / Low Scape Mound Chokeberry	#3	Min. 8"-18"	32
	CP2	<i>Cornus alba 'Prairie Fire'</i> / Prairie Fire Dogwood	#5	Min. 24-36" Ht.	6
	DC	<i>Diervilla sessilifolia 'Cool Splash'</i> / Cool Splash False Honeysuckle	#3	Min. 12"-24"	5
	VM	<i>Viburnum dentatum 'Blue Muffin'</i> / Blue Muffin Arrowwood Viburnum	#5	Min. 18-24" Ht.	8
EVERGREEN SHRUBS	CODE	BOTANICAL / COMMON NAME	CONT	SIZE	QTY
	JA	<i>Juniperus sabina 'Arcadia'</i> / Arcadia Juniper	3 gal	Min. 12"-24"	29
	PM	<i>Pinus strobus 'Minuta'</i> / Minuta Dwarf White Pine	3 gal	Min. 12" Ht.	8
	TG2	<i>Taxus x media 'Greenwave'</i> / Greenwave Anglo-Japanese Yew	#5	Min. 18-24" Ht.	13
PERENNIALS & GRASSES	CODE	BOTANICAL / COMMON NAME	CONT	SIZE	QTY
	CB2	<i>Carex bicknellii</i> / Prairie Sedge	#1	6" Ht.	76
	EP2	<i>Echinacea pallida</i> / Pale Purple Coneflower	#1	Min. 8"-18"	14
	PV	<i>Panicum virgatum 'Shenandoah'</i> / Shenandoah Switch Grass	#1	Min. 8"-18"	30
	RD	<i>Rudbeckia fulgida deamii</i> / Deam's Coneflower	#1	Min. 8"-18"	46
	SH	<i>Sporobolus heterolepis 'Tara'</i> / Prairie Dropseed	#1	Min. 8"-18"	53



PRELIMINARY. NOT FOR CONSTRUCTION.