

Time: 9/24/2019 1:38:44 PM

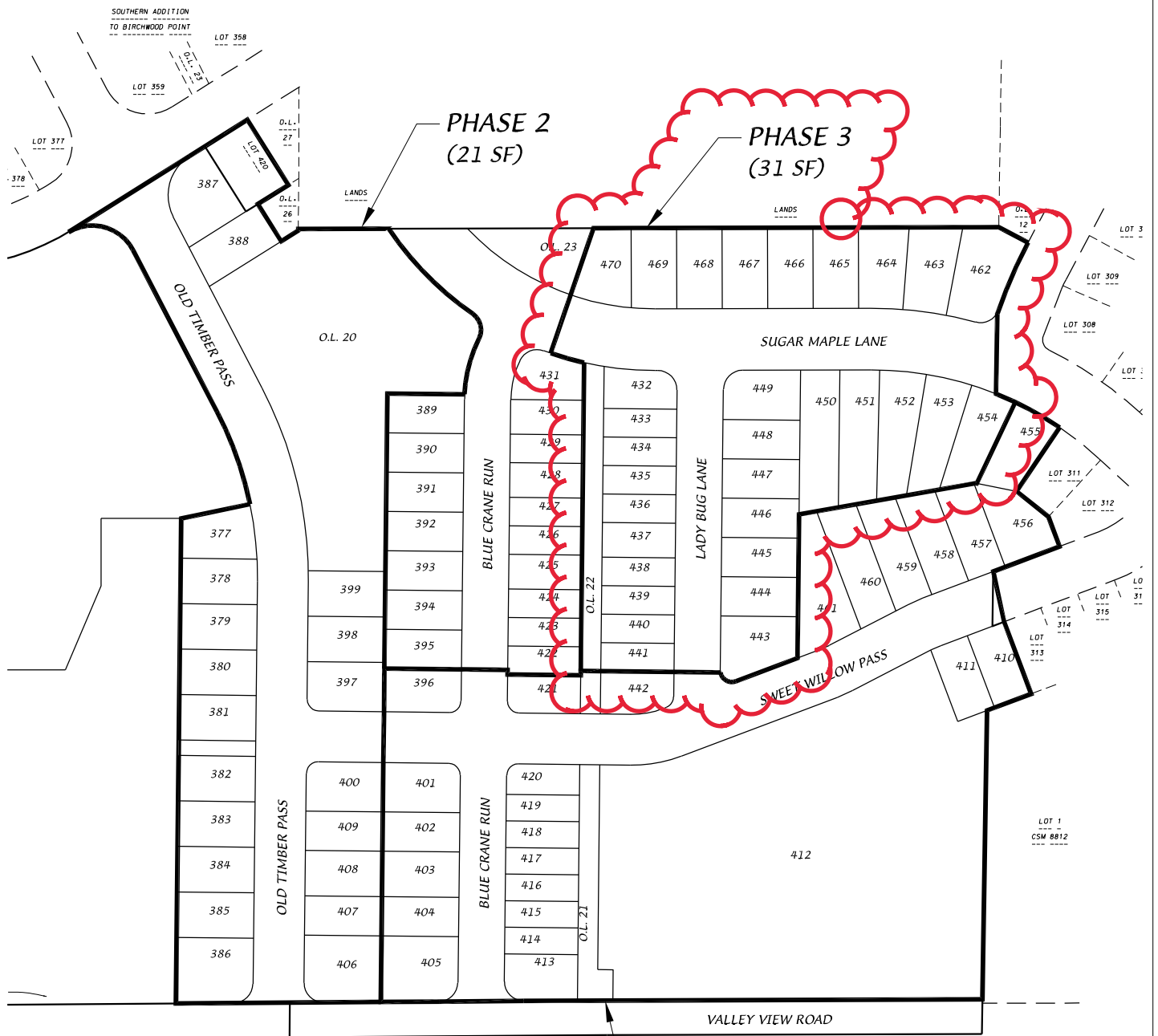
Session: C:\GTViewer\_Sessions\Deming & Fourier SW.gts

**City of Madison, WI - GIS/Mapping data**

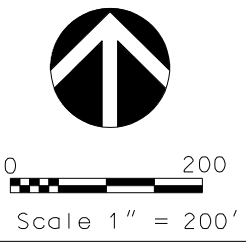
Printed By: entnt

Disclaimer: The City makes no representation about the accuracy of these records and shall not be liable for any damages

# Western Addition to 1000 Oaks



**D'ONOFRIO KOTTKE AND ASSOCIATES, INC.**  
 7530 Westward Way, Madison, WI 53717  
 Phone: 608.833.7530 • Fax: 608.833.1089  
 YOUR NATURAL RESOURCE FOR LAND DEVELOPMENT



**PHASE 1**  
 (17 SF, 8 TWINS & 1 MF)

DATE: 07-28-21  
 F.N.: 20-05-144  
 REV.

DRAWN BY: ATF



