

**APPLICATION FOR
URBAN DESIGN COMMISSION
REVIEW AND APPROVAL**

AGENDA ITEM # _____
Project # _____
Legistar # 19544

DATE SUBMITTED: <u>August 11, 2010</u>	Action Requested
UDC MEETING DATE: <u>September 1, 2010</u>	<input type="checkbox"/> Informational Presentation
	<input checked="" type="checkbox"/> Initial Approval and/or Recommendation
	<input checked="" type="checkbox"/> Final Approval and/or Recommendation

PLEASE PRINT!

PLEASE PRINT!

PROJECT ADDRESS: 5702 Femrite Drive, Madison, WI 53718

ALDERMANIC DISTRICT: 16

OWNER/DEVELOPER (Partners and/or Principals)
City of Madison Police Department

ARCHITECT/DESIGNER/OR AGENT:
Angus Young Associates - Jeff Hazekamp

Engineering Department, Randy Wiesner

555 S. River Street

1602 Emil Street / (608) 267-8679

Janesville, WI 53548

CONTACT PERSON: Jeff Hazekamp

Address: Angus Young Associates
555 S. River Street

Phone: (608) 756-2326

Fax: (608) 756-0464

E-mail address: jeffh@angusyoung.com

TYPE OF PROJECT:
(See Section A for:)

- Planned Unit Development (PUD)
 - General Development Plan (GDP)
 - Specific Implementation Plan (SIP)
- Planned Community Development (PCD)
 - General Development Plan (GDP)
 - Specific Implementation Plan (SIP)
- Planned Residential Development (PRD)
- New Construction or Exterior Remodeling in an Urban Design District * (A public hearing is required as well as a fee)
- School, Public Building or Space (Fee may be required)
- New Construction or Addition to or Remodeling of a Retail, Hotel or Motel Building Exceeding 40,000 Sq. Ft.
- Planned Commercial Site

(See Section B for:)
 New Construction or Exterior Remodeling in C4 District (Fee required)

(See Section C for:)
 R.P.S.M. Parking Variance (Fee required)

(See Section D for:)
 Comprehensive Design Review* (Fee required)
 Street Graphics Variance* (Fee required)
 Other _____

*Public Hearing Required (Submission Deadline 3 Weeks in Advance of Meeting Date)

Where fees are required (as noted above) they apply with the first submittal for either initial or final approval of a project.

Police Training Center 5702 Femrite Drive

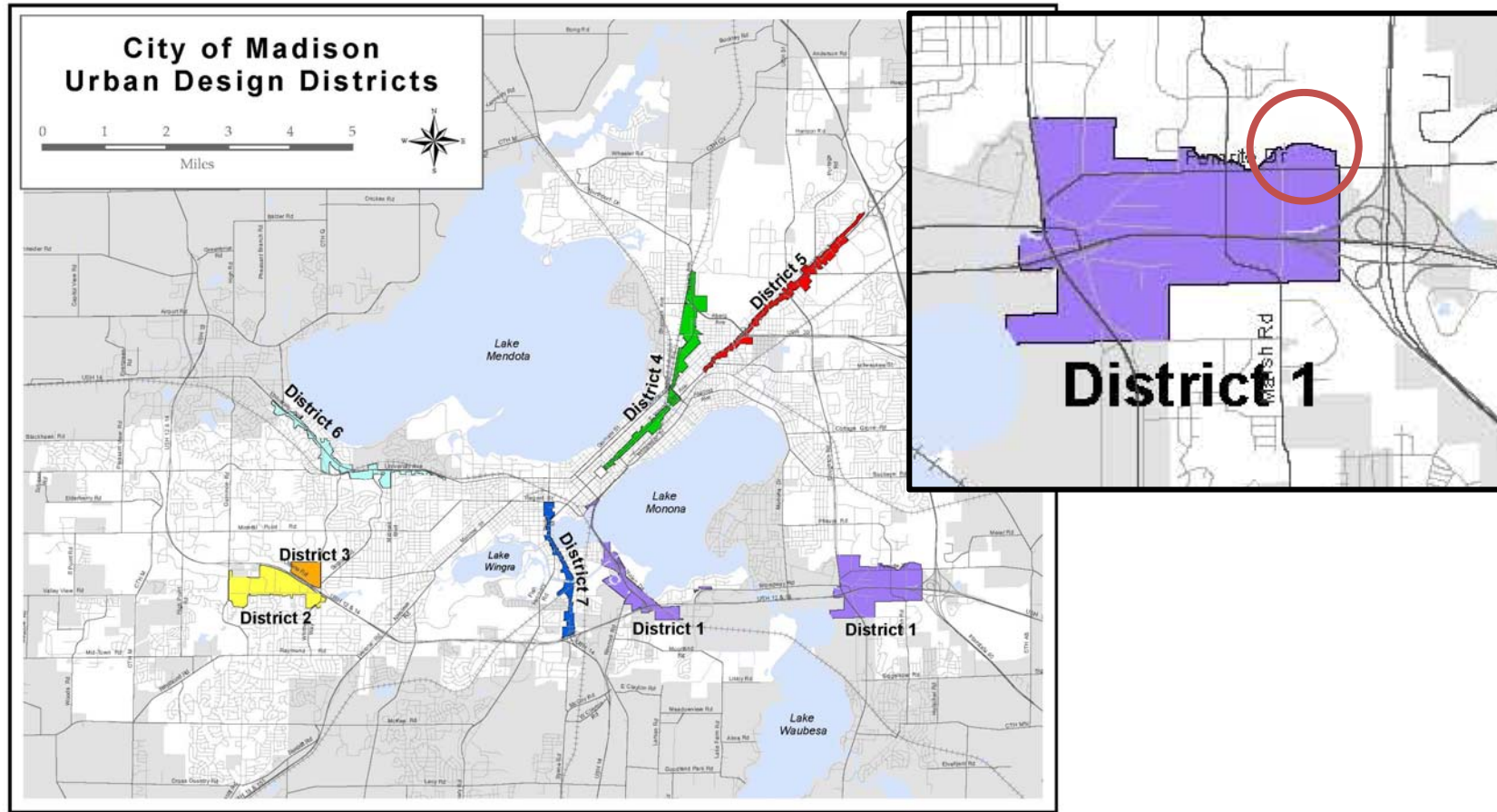
Urban Design Commission Submittal

September 1, 2010

Jeff Hazekamp & Katie Udell, Angus Young Associates

jeffh@angusyoung.com (608) 756-2326

Urban Design District 1



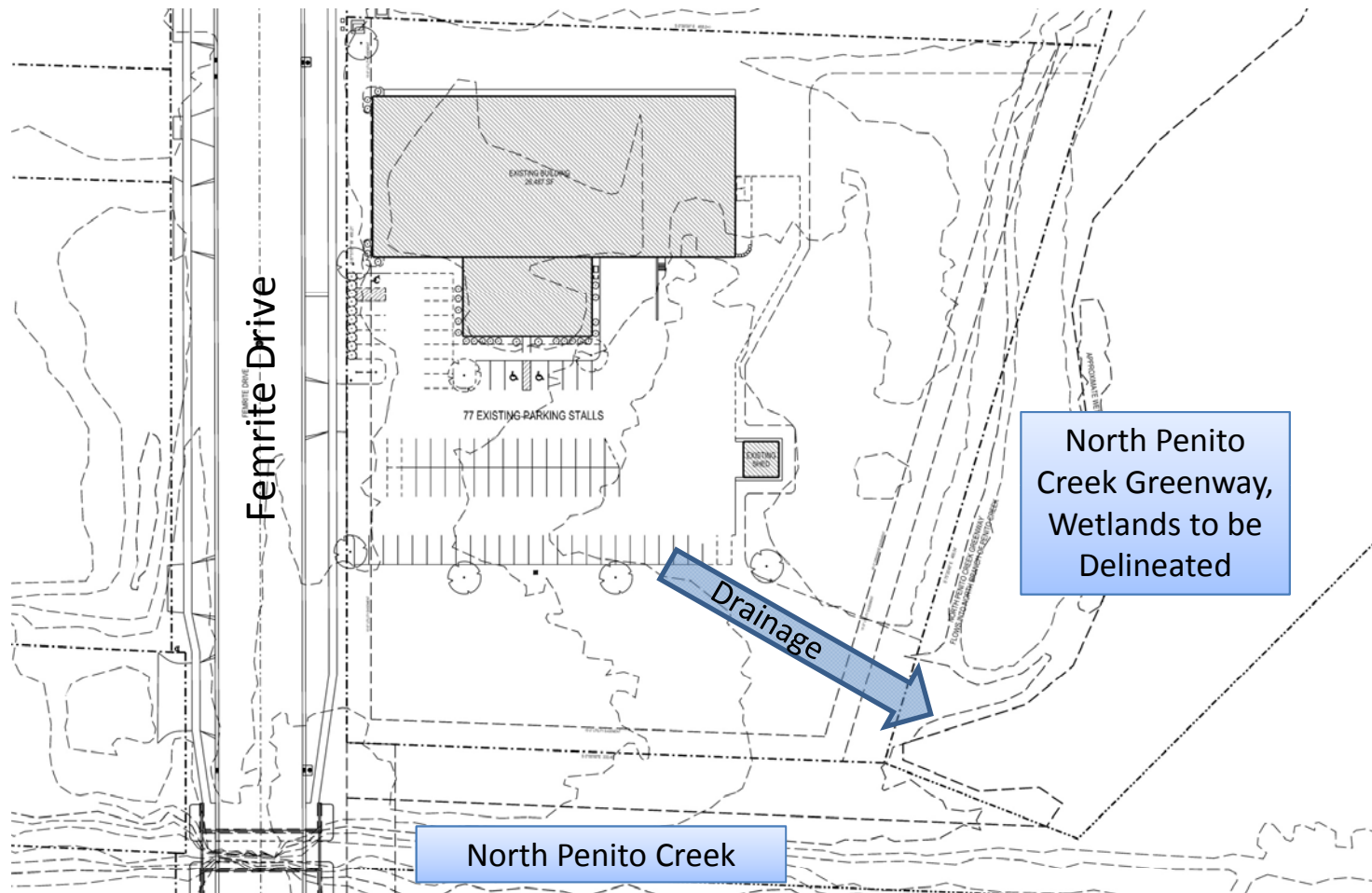
City of Madison Department of Planning & Community & Economic Development, Planning Unit, June 2009, s18

Location Map



- Zoned M-1 – Limited Manufacturing District
- Industrial Building

Existing Site Plan



Existing Pictures



View from South along Femrite

Existing Pictures

View of South side of Existing Office



View of North side of Existing Office



Existing Pictures

**View of Existing Warehouse from
East Looking West**



**View of South wall of Existing
Warehouse**



Existing Pictures

View of North Elevation



View of West side of Existing Warehouse



Existing Pictures

View to the North



View to the Northeast



Project Narrative

- Master Plan for Renovation and Expansion of Police Training Facility over (3) phases
 - Phase 1: Exterior Façade upgrades and partial interior renovation
 - Phase 2: Site Improvements and 8,785 SF Range Addition
 - Phase 3: Remainder of interior renovations

Project Narrative

- Highlights of Project: Grading
 - Addition of stormwater management bioretention/ filtration devices (awaiting geotechnical report on soils)
 - Bioretention device added off northeast corner of existing parking lot
 - Building addition is outside of 100-year floodplain, will match existing finish floor elevation

Project Narrative

- Highlights of Project: Landscaping
 - Screening of existing parking lot through perimeter landscaping – **natural forms**
 - Generous foundation landscaping
 - Bioretention/Filtration devices – incorporate native species
 - Existing native cover area to remain and be restored where disturbed during construction
 - **West side swale to become native seeded swale with oaks**

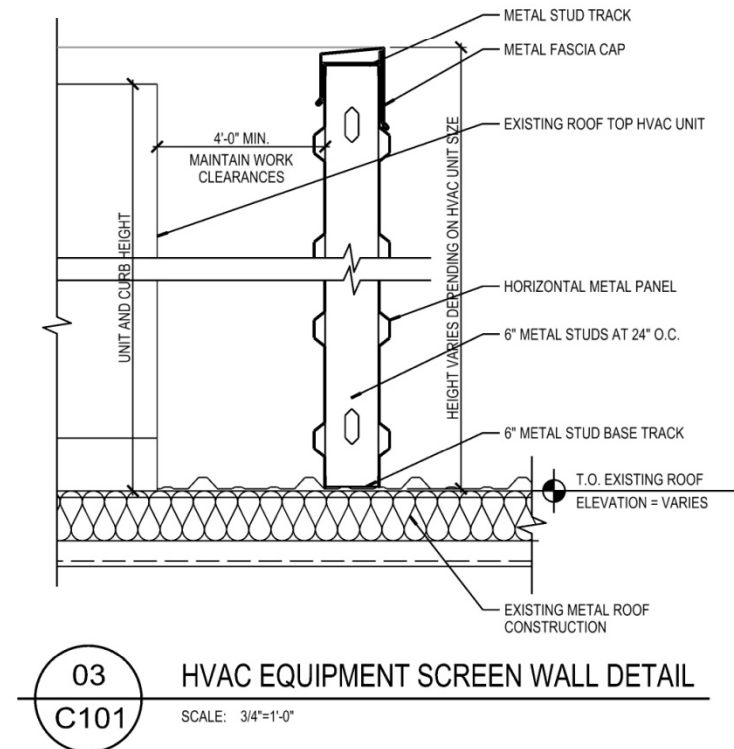
Project Narrative

- Highlights of Project: Lighting
 - Upgrade in exterior lighting to 30'-0" High 250-Watt Metal Halide lighting with cut-off fixtures (uses less energy on same number of poles than LED)
 - Wall-mounted lighting on new building main entry at southeast



Project Narrative

- Highlights of Project: Building Design
 - Existing building metal panel with new metal accent band and canopies with columns to maintain industrial feel
 - Screening of rooftops provided



Proposed Building Rendering



Madison Police Training Facility

Perspective Facing Northeast

FEATURES & SPECIFICATIONS

INTENDED USE— For building- and wall-mounted applications.

CONSTRUCTION— Rugged, die-cast, single-piece aluminum housing. Die-cast door frame has a 1/8" thick tempered glass lens. Door frame is fully gasketed with one-piece solid silicone.

FINISH— Standard finish is textured dark bronze (DBT) corrosion-resistant polyester powder finish. Additional architectural colors are available; see www.lithonia.com/archcolors. Striping is also available.

OPTICAL SYSTEM— Segmented reflectors for superior uniformity and control. Reflectors are interchangeable. Three full cutoff distributions available: FT (forward throw), MD (medium throw) and WT (wide throw).

ELECTRICAL SYSTEM— Ballast: 50W-150W utilizes a high reactance, high power factor ballast. Metal halide 150W and below are standard with pulse-start technology. 35S utilizes a reactance high power factor ballast. 175W utilizes a constant-wattage autotransformer ballast. Quick disconnect plug easily disconnects reflector from ballast. Ballasts are copper-wound and 100% factory-tested. CSA, NOM or INTL required for probe start shipments outside of the US for 175M. Not available 175M SCWA. Ceramic metal halide lamps are recommended for use in applications where superior color rendition, lumen maintenance and longer lamp life are desired.

Socket: Porcelain, medium-base socket with copper alloy, nickel-plated screw shell and center contact. UL listed 660W, 600V 4KV pulse rated.

INSTALLATION— Universal mounting mechanism with integral mounting support allows fixture to hinge down. Bubble level provides correct alignment with each installation.

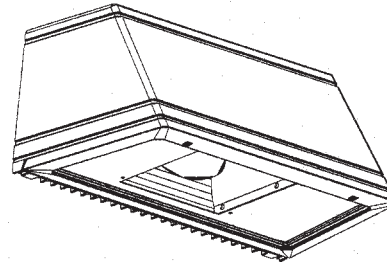
LISTING— UL Listed (standard). CSA Certified (see Options). Suitable for wet locations (damp location listed in lens-up orientation). WLU option offers wet location listing in up orientation (see Options). IP65 rated. 25°C ambient. ELED: U.S. Patent No. 7,737,640.

NOTE: Specifications subject to change without notice.

Catalog Number	
Notes	Type BB

Decorative Wall-Mounted Lighting

WST



METAL HALIDE
50W-175W
HIGH PRESSURE SODIUM
35W-150W

Specifications

Length: 16.25 (41.2)

Depth: 9.13 (23.2)

Overall Height: 7.25 (18.4)

*Weight: 30 lbs (13.6 kg)

* Weight as configured in example below.

All dimensions are inches (centimeters) unless otherwise specified.

ORDERING INFORMATION

For shortest lead times, configure product using **standard options (shown in bold)**.

Example: WST 100M FT TB LPI

Series	Distribution	Voltage	Ballast	Options	Lamp ¹⁸
WST	FT Forward throw	120	(blank) Magnetic ballast	Shipped installed in fixture	LPI Lamp included
Wattage/source	MD Medium throw (coated lamp std.)	208 ²	CWI Constant wattage isolated	SF Single fuse 120, 277, 347V ¹⁰	L/LP Less lamp
High pressure sodium	WT Wide throw	240 ²	Pulse Start	DC12 Emergency circuit 12 volt (35W lamp included std.) ⁶	Finish ¹⁶
Ceramic metal halide		277	SCWA Super CWA pulse start ballast ⁴	2DC12 Emergency circuit 12 volt (2, 35W lamps included) ⁶	(blank) Dark bronze, textured
35S ¹		347		DC2012 Emergency circuit 12 volt (20W lamp included) ⁶	DSST Sandstone, textured
50MHC		TB ³		2DC2012 Emergency circuit 12 volt (2, 20W lamps included) ⁶	DNAT Natural aluminum, textured
50S		23050HZ ⁵		ELED Emergency LED secondary source battery pack with time delay (-4°F min. operating temperature) ⁹	DWHG White, textured
70S				2ELED Emergency LED secondary source (two modules) battery pack with time delay (-4°F min. operating temperature) ⁹	DBLB Black, textured
100S				DFL Diffusing lens	CR Enhanced corrosion resistant
150S				EC Emergency circuit ^{7,11}	CRT Non-stick protective coating ¹⁷
Metal halide				IBS Internal backlight shield ¹²	
50M				PE Photoelectric cell-button type (n/a TB)^{13,14}	
70M				QRS Quartz restrrike system ^{8,11}	
100M				WLU Wet location door for up orientation	
150M				CSA CSA Certified	
175M ¹⁹				NOM NOM Certified ⁵	
				INTL International shipment for 175M	
				Shipped separately	
				BBW Surface-mounted back box ¹⁵	
				UT5 Uptilt 5 degrees ¹⁵	
				WG Wire guard ¹³	
				VG Vandal guard ¹³	

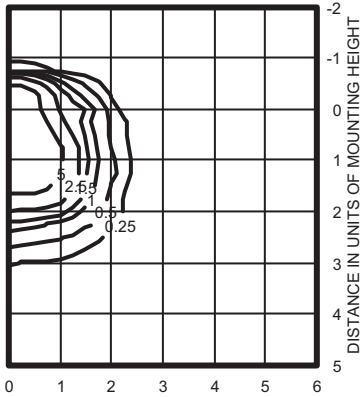
NOTES:

- 120V.
- Must specify CWI for use in Canada.
- Optional multi-tap ballast (120, 208, 240, 277V); (120, 277, 347V in Canada; ships as 120V/347V).
- Available with 150M or 150MHC only.
- Consult factory for available wattages.
- Not available with ELED, SF, DF, EC or QRS.
- Not available with ELED, QRS or DCs.
- Not available with ELED, EC or DCs.
- Maximum wattage 100M, 70S. Must specify 120V or 277V. Not available with QRS, EC or DC.
- Not available with DC options.
- Maximum allowable wattage lamp included.
- Not available with Medium Throw (MD, MDU, MDU5) distributions.
- Must be ordered with fixture; cannot be field installed.
- Not available with 347V.
- May be ordered as an accessory with prefix "WS". Must specify finish.
- See www.lithonia.com/archcolors for additional color options.
- Black finish only.
- Must be specified.
- These wattages do not comply with California Title 20 regulations.

WST Metal Halide, High Pressure Sodium Building Mounted

WST 150MHC FT LTL11069P

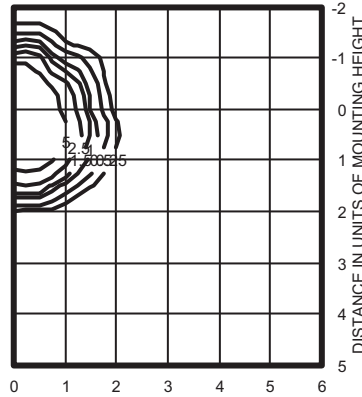
ISOILLUMINANCE PLOT (Footcandle)



150W pulse start metal halide lamp, horizontal lamp orientation Footcandle values based on 12' mounting height, 14000 rated lumens.
Luminaire Efficiency: 52.9%

WST 150MHC MD LTL11068P

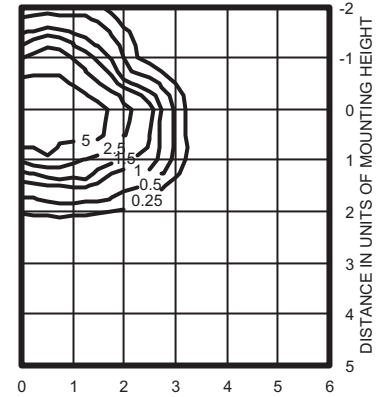
ISOILLUMINANCE PLOT (Footcandle)



150W pulse start metal halide lamp, horizontal lamp orientation Footcandle values based on 12' mounting height, 12500 rated lumens.
Luminaire Efficiency: 60.2%

WST 150MHC WT LTL11070P

ISOILLUMINANCE PLOT (Footcandle)



150W pulse start metal halide lamp, horizontal lamp orientation Footcandle values based on 12' mounting height, 14000 rated lumens.
Luminaire Efficiency: 62.5%

Lamp	Initial Lumens	Mounting Height			
		10'	12'	14'	16'
Metal Halide					
50W MH	3,900	0.43	0.30	0.22	0.17
70W MH	5,500	0.62	0.43	0.31	0.24
100W MH	8,500	0.95	0.66	0.48	0.37
150W MH	12,500	1.41	0.98	0.72	0.55
175W MH	12,800	1.44	1.0	0.73	0.56
High Pressure Sodium					
35W HPS	2,250	0.26	0.18	0.13	0.10
50W HPS	4,000	0.45	0.31	0.23	0.17
70W HPS	6,400	0.72	0.50	0.37	0.28
100W HPS	9,500	1.07	0.74	0.54	0.41
150W HPS	16,000	1.80	1.25	0.91	0.70

Emergency Option Lamp Compatibility

Lamp Options (# lamps/wattages)	DC12	2DC12	DC2012	2DC2012	EC	ELED	2ELED
35S	■	■	■	■	■	■	■
50S	■	■	■	■	■	■	■
70S	■	■	■	■	■	■	■
100S	■	■	■	■	■		
150S	■	■	■	■	■		
50M	■	■	■	■	■	■	■
70M	■	■	■	■	■	■	■
100M	■	■	■	■	■	■	■
150M	■	■	■	■	■		
175M	■	■	■	■	■		

FEATURES & SPECIFICATIONS

INTENDED USE — Streets, walkways, parking lots and surrounding areas.

CONSTRUCTION — Rugged, die-cast, single-piece aluminum housing with nominal wall thickness of 1/8". Die-cast door frame has impact-resistant, tempered, glass lens (3/16" thick). Door frame is fully gasketed with one-piece tubular silicone. **US. Patent No. D447,590. Canada Patent No. 94324.**

FINISH — Standard finish is dark bronze polyester powder finish. Additional architectural colors are available; see www.lithonia.com/archcolors.

OPTICAL SYSTEM — Anodized segmented reflectors for superior uniformity and control. Reflectors attach with tool-less fasteners and are rotatable and interchangeable. Five full cutoff distributions available: Type II (roadway), Type III (asymmetric), Type IV (forward throw), Type IV (wide, forward throw) and Type V (symmetric square).

ELECTRICAL SYSTEM — Ballast: Constant wattage autotransformer. Metal Halide: Super CWA (pulse start ballast), 88% efficient and EISA legislation compliant, is required for 175-400W (SCWA option) for US shipments only. CSA, NOM or INTL required for probe start shipments outside of the US. Pulse-start ballast (SCWA) required for 200W, 320W, or 350W. Ballast is 100% factory-tested. All ballasts are mounted on a removable power tray with tool-less latch and have positive locking disconnect plug.

Socket: Porcelain, horizontally-mounted, mogul-base socket with copper alloy, nickel-plated screw shell and center contact.

INSTALLATION — Integral arm for pole or wall mounting. Optional mountings available.

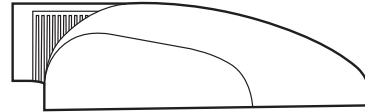
LISTING — UL Listed (standard). CSA Certified (see Options). UL listed for 25°C ambient and wet locations. IP65 Rated.

NOTE: Specifications subject to change without notice.

Catalog Number	
Notes	Type AA

Architectural Area & Roadway Luminaires

AS2



METAL HALIDE: 175W-400W
HIGH PRESSURE SODIUM: 200W-400W
 10' to 35' Mounting

Specifications

EPA: 1.2 ft²

Length: 28.6 (72.6)

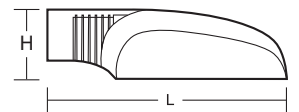
Width: 17.1 (43.4)

Depth: 8.3 (21.0)

*Weight: 40 lbs (18.2 kg)

*Weight as configured in example below.

All dimensions are inches (centimeters) unless otherwise specified.



ORDERING INFORMATION

For shortest lead times, configure product using **standard options (shown in bold)**.

Example: AS2 250M SR3 TB SCWA SPA LPI

AS2	250M	SR4W	SPA	SCWA				
Series	Wattage ¹	Voltage	Mounting	Ballast	Options	Finish ¹³	Lamp ¹⁴	
AS2	Metal halide 175M ¹⁵ 200M ² 250M¹⁶ 320M ² 350M ^{2,3,15} 400M^{3,16} High pressure sodium⁴ 200S 250S 400S	120 208 ⁵ 240 ⁵ 277 347 480 ⁵ TB⁶ 23050Hz ⁸	SPA Square pole mounting RPA Round pole mounting WBA Wall bracket (up or down) ⁹ ASKMA2 Mast arm adapter ¹⁰ DCAS2 Decorative curved arm, square pole only ¹⁰ DCAS2R Decorative curved arm, round pole only ¹⁰	(blank) Magnetic ballast CWI Constant wattage isolated Pulse Start SCWA Super CWA pulse start ballast NOTE: For shipments to U.S. territories, SCWA must be specified to comply with EISA.	Shipped installed in fixture SF Single fuse 120, 277, 347V DF Double fuse 208, 240, 480V PER NEMA twist-lock receptacle only (no photocontrol) EC Emergency circuit ¹¹ QRS Quartz restrrike system ¹¹ HS Houseside shield (SR2, SR3, SR4W) CSA CSA Certified NOM NOM Certified INTL Available for MH probe start shipping outside the U.S. REGC1 California Title 20 effective 1/1/2010 Shipped separately¹² PE1 NEMA twist-lock PE (120, 208, 240V) PE3 NEMA twist-lock PE (347V) PE4 NEMA twist-lock PE (480V) PE7 NEMA twist-lock PE (277V) VG Vandal guard SC Shorting cap	(blank) Dark bronze DBL Black DGC Charcoal gray DMB Medium bronze DNA Natural aluminum DWH White CR Corrosion resistance	LPI Lamp included L/LP Less lamp	
Distribution								

SR2 Segmented type II roadway

SR3 Segmented type III asymmetric

SR4SC Segmented type IV forward throw, sharp cutoff

SR4W Segmented type IV wide, forward throw

SR5S Segmented type V square

NOTES:

- Lower wattages available. Consult factory.
- Must be ordered with SCWA.
- Must use reduced jacket lamp.
- Not available with SCWA.
- Must specify CWI for use in Canada.
- Optional multi-tap ballast (120, 208, 240, 277V) (120, 277, 347V in Canada).
- Consult factory for available wattage.³
- Mounted in lens-up orientation, fixture is damp location listed.
- Shipped separately.
- Maximum allowance wattage lamp included.
- May be ordered as an accessory.
- Additional architectural colors available; see www.lithonia.com/archcolors.
- Must be specified.
- These wattages do not comply with California Title 20 regulations.
- These wattages require the REGC1 option to be chosen for shipments into California for Title 20 compliance. 250M REGC1 in not available in 347 or 480V.

Note: Aeris™ has a unique drilling template that requires an Aeris drilling pattern to be specified when ordering poles. See example below.
 Example: SSA 20 4C **DM19AS** DDB

Aeris Drilling Pattern

DM19AS	1 at 90 degrees
DM28AS	2 at 180 degrees
DM29AS	2 at 90 degrees
DM39AS	3 at 90 degrees
DM49AS	4 at 90 degrees
DM32AS	3 at 120 degrees (round poles only)

Accessories: Tenon Mounting Slipfitter

Order as separate catalog number. Must be used with round pole mounting (RPA).

Tenon O.D.	One	Two@180°	Two@90°	Three@120°	Three@90°	Four@90°
2-3/8"	AST20-190	AST20-280	AST20-290	AST20-320	AST20-390	AST20-490
2-7/8"	AST25-190	AST25-280	AST25-290	AST25-320	AST25-390	AST25-490
4"	AST35-190	AST35-280	AST35-290	AST35-320	AST35-390	AST35-490
AS2VG	Vandal guard					



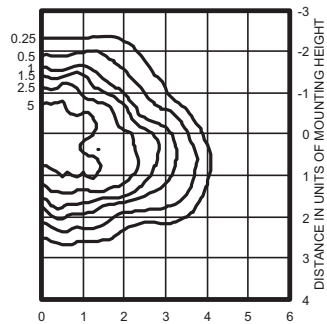
AS2 Metal Halide, High Pressure Sodium Area Lighting

Coefficient of Utilization

Initial Footcandles

AS2 400M SR3 TEST NO. LTL 10099P

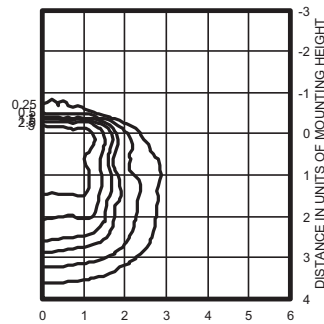
ISOILLUMINANCE PLOT (Footcandle)



400W pulse start metal halide lamp, rated 38000 lumens. Footcandle values based on 20' mounting height.
Classification: Type III, Medium, Full Cutoff

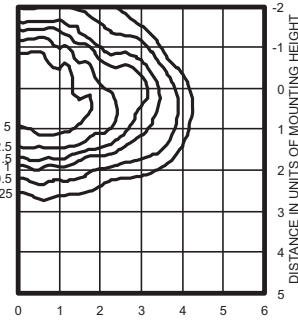
AS2 400M SR4SC TEST NO. LTL 10100P

ISOILLUMINANCE PLOT (Footcandle)



400W pulse start metal halide lamp, rated 38000 lumens. Footcandle values based on 20' mounting height.
Classification: Unclassified (Type IV, Very Short), Full Cutoff

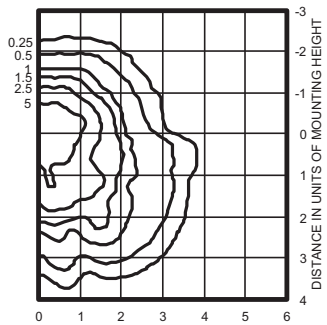
AS2 400S SR3 TEST NO: LTL10104



400W lamp, rated 50000 lumens. Footcandle values based on 20' mounting height.
Classification: Type II, Medium, Full Cutoff

AS2 400M SR4W TEST NO. LTL 10101P

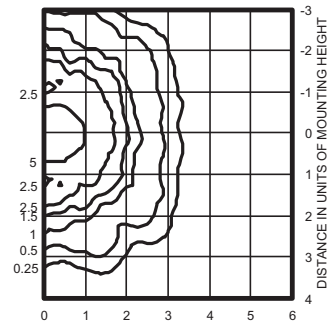
ISOILLUMINANCE PLOT (Footcandle)



400W pulse start metal halide lamp, rated 38000 lumens. Footcandle values based on 20' mounting height.
Classification: Type IV, Short, Full Cutoff

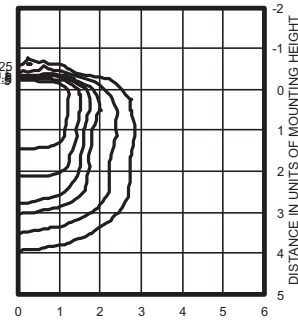
AS2 400M SR5S TEST NO. LTL 10102P

ISOILLUMINANCE PLOT (Footcandle)



150W pulse start metal halide lamp, rated 38000 lumens. Footcandle values based on 20' mounting height.
Classification: Unclassified (Type IV, Very Short), Full Cutoff

AS2 400S SR4SC TEST NO: LTL10105



400W lamp, rated 50000 lumens. Footcandle values based on 20' mounting height.
Classification: Unclassified (Type IV, Very Short), Full Cutoff

NOTES:

- 1 Photometric data for other distributions can be accessed at www.lithonia.com.
- 2 For electrical characteristics consult technical data tab.
- 3 Tested to current IESNA and NEMA standards under stabilized laboratory conditions. Various operating factors can cause differences between laboratory and actual field measurements. Dimensions and specifications are based on the most current data and are subject to change.

Mounting Height Correction Factor

(Multiply the fc level by the correction factor)

- 10 ft. = 12.25
- 15 ft. = 5.4
- 30 ft. = 1.36
- 40ft. = 0.77

$$\frac{\text{Existing Mounting Height}^2}{\text{New Mounting Height}^2} = \text{Correction Factor}$$

POLICE TRAINING CENTER MASTER PLAN CITY OF MADISON MADISON, WISCONSIN

Angus Young Architecture
Engineering
Interior Design
Balance in Creativity
555 South River Street, Janesville, WI 53448-4783
Ph: 608.756.2326 Fax: 608.756.0444
www.angusyong.com



SHEET INDEX

GENERAL

G001 COVER SHEET

CIVIL

C100 EXISTING AND DEMOLITION SITE MASTER PLAN
C101 SITE LAYOUT AND SITE UTILITY MASTER PLAN
C201 SITE GRADING MASTER PLAN
C601 MASTER SITE PLAN LIGHTING CALCULATIONS
L101 LANDSCAPE PLAN

ARCHITECTURAL

A100 FIRST FLOOR PLAN
A101 SECOND FLOOR PLAN
A400 EXTERIOR ELEVATIONS

REGULATORY DATA

PROJECT ADDRESS

5702 FEMRITE DRIVE
MADISON, WI 53718

BUILDING CODE

WISCONSIN ENROLLED 2006 IBC

USE AND OCCUPANCY CLASSIFICATION

EXISTING OFFICES = NO CHANGE IN USE/NO WORK
RENOVATION OF EXISTING METAL BUILDING = GROUP B
EXISTING OFFICE AND EXISTING METAL BUILDING ARE
SEPARATED BY AN EXISTING 4 HOUR FIRE WALL

GENERAL BUILDING HEIGHT AND AREA

MAXIMUM BUILDING AREA ALLOWED = 23,000 SF
EXISTING METAL BUILDING AREA = 22,500 SF
EXISTING OFFICE AREA = 4,000 SF
MAXIMUM STORIES ALLOWED = 4 STORIES
MAXIMUM HEIGHT ALLOWED = 55 FEET
EXISTING METAL BUILDING HEIGHT = 1 STORY / 20.33'
EXISTING OFFICE BUILDING HEIGHT = 2 STORIES / 23.33'

TYPE OF CONSTRUCTION

TYPE II B

AUTOMATIC SPRINKLER SYSTEM

PHASE 1 FULLY SPRINKLERED IN ACCORDANCE WITH 903.3.1.1

35	30	25	20	15	10	05
34	29	24	19	14	09	04
33	28	23	18	13	08	03
32	27	22	17	12	07	02
31	26	21	16	11	06	01

TITLE BLOCK

DETAILS IN THIS SET ARE PLACED
ON THE SHEETS AND NUMBERED WITH
RESPECT TO THE SHEET ABOVE.
CONSEQUENTLY, DETAILS ON A GIVEN
SHEET MAY OR MAY NOT BE NUMBERED
CONSECUTIVELY.

REGISTRATION STAMP AND SIGNATURE

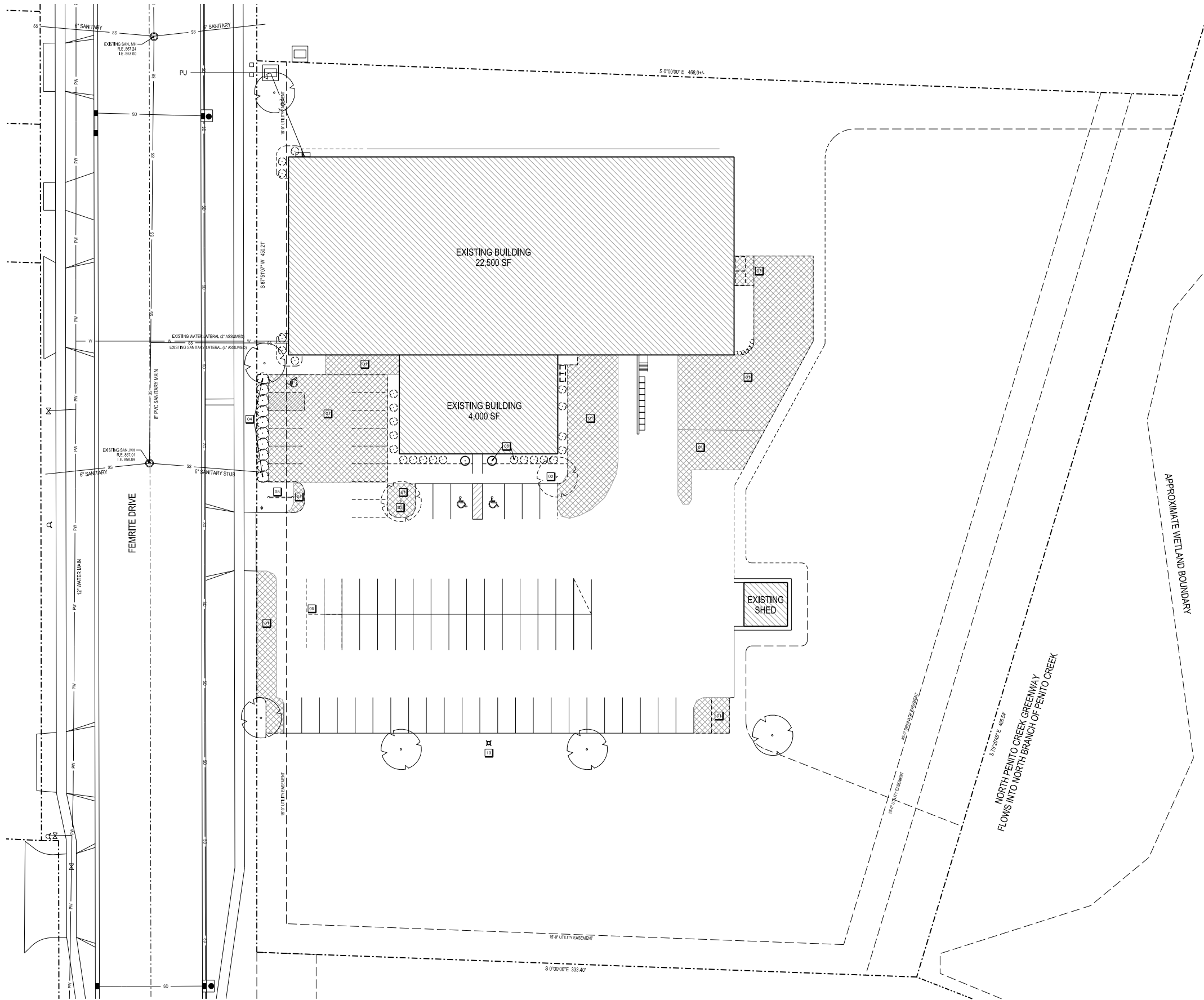
POLICE TRAINING CENTER MASTER PLAN CITY OF MADISON

PROJECT NO. 46450
DRAWN BY KAU
REVIEWED BY XXX
APPROVED BY XXX
ISSUANCES
REVISIONS
URBAN DESIGN COMMISSION - 05/25/2010

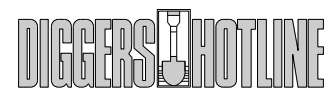
★ NOT FOR CONSTRUCTION ★
Due to electronic distribution, this drawing
may not be printed to the scale indicated
on the drawings. Do NOT use scale
to determine dimensions or sizes. ★

8/25/2010 8:25:43 AM
Copyright © 2010 Angus-Young Associates, All Rights Reserved

G001



EXISTING AND DEMO MASTER SITE PLAN
SCALE: 1"=20'
NORTH



CALL TOLL FREE 1-800-242-8511
MILWAUKEE AREA 414-259-1181
FAX A LOCATE 1-800-338-3860
TDD (HEARING IMPAIRED) 1-800-542-2289
ONLINE: www.DiggersHotline.com
WISCONSIN STATUTE REGS 10.01(4) REQUIRES A MINIMUM OF THREE (3) WORKING DAYS NOTICE PRIOR TO EXCAVATION.

- KEYNOTES**
- 1 REMOVE EXISTING PAVEMENT. SEE SHEET C101 FOR NEW PAVEMENT AREAS
 - 2 RELOCATE EXISTING CHAMPAGNE TO NEW LOCATION. SEE LANDSCAPE PLAN FOR NEW LOCATION
 - 3 RELOCATE EXISTING HONEY LOCUST TO NEW LOCATION. SEE LANDSCAPE PLAN FOR NEW LOCATION
 - 4 RELOCATE EXISTING DOGWOOD SHRUBS. SEE LANDSCAPE PLAN FOR NEW LOCATIONS
 - 5 REMOVE EXISTING SIGN
 - 6 REMOVE EXISTING SHRUBS, TYPICAL
 - 7 REMOVE EXISTING CHAINLINK FENCE WITH SLATS
 - 8 REMOVE EXISTING BOULDER RETAINING WALL
 - 9 REMOVE EXISTING PAINT STRIPE, TYPICAL
 - 10 REMOVE EXISTING LIGHT FIXTURE AND REPLACE WITH NEW FIXTURE. SEE SHEET C101. EXISTING POLE TO REMAIN

Due to electronic distribution, this drawing may not be printed to the scale indicated on the drawings. Do NOT use scale to determine dimensions or dates. Due to electronic distribution, this drawing may not be printed to the scale indicated on the drawings. Do NOT use scale to determine dimensions or dates.

PROJECT NUMBER: 000000000000000000
APPROVED BY: [Signature]
REVIEWED BY: [Signature]
DRAWN BY: KAU
8/24/2010 9:12:09 AM

ISSUANCES:
URBAN DESIGN COMMISSION - 06/20/10

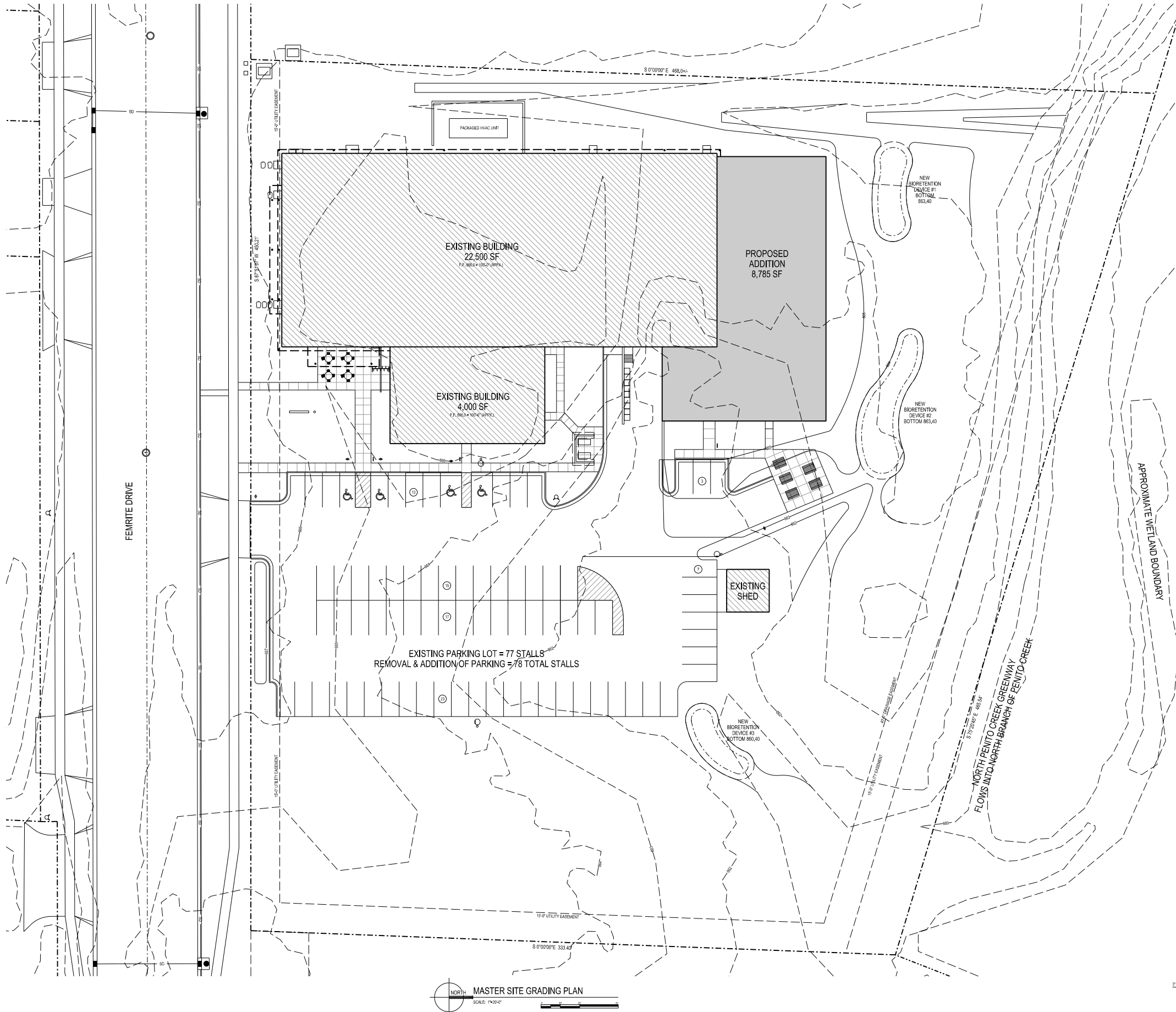
REVISIONS:

MADISON POLICE DEPARTMENT
TRAINING CENTER - PHASE I
CITY OF MADISON
MADISON, WISCONSIN

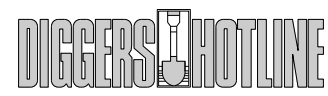
Angus Young
Architecture
Engineering
Interior Design
255 South Bates Street, Appleton, WI 53414-4733
Tel: 488.362.3236 Fax: 488.726.6564
www.angusyoung.com

Copyright © 2010 Angus Young Associates, Inc. All Rights Reserved.

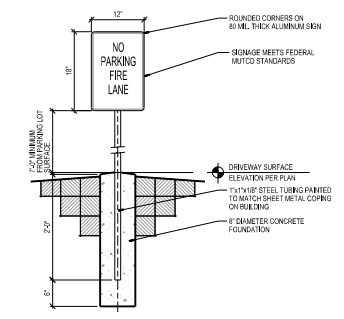
SCALE: 1/8"=1'-0"
 DATE: 02/20/10
 PROJECT: 103213



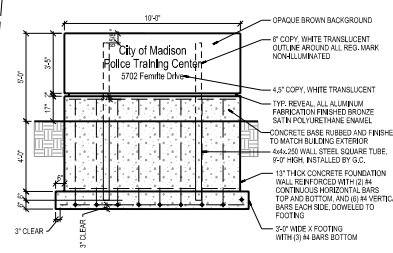
MASTER SITE GRADING PLAN
 SCALE: 1/8"=1'-0"



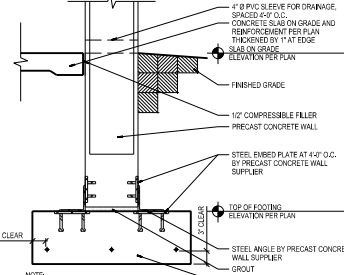
CALL TOLL FREE 1-800-242-8511
 MILWAUKEE AREA 414-259-1181
 FAX A LOCATE 1-800-338-3860
 TDD (HEARING IMPAIRED) 1-800-542-2289
 ONLINE: www.DiggersHotline.com
WISCONSIN STATUTE REGS 10.02(1) REQUIRES A MINIMUM OF THREE (3) WORKING DAYS NOTICE PRIOR TO EXCAVATION.



03 FIRE LANE SIGN DETAIL
 SCALE: 3/4"=1'-0"



02 INTERNALLY LIT MONUMENT SIGN
 SCALE: 1/4"=1'-0"



01 SCREEN PRECAST CONCRETE WALL AT FOOTING
 SCALE: 3/4"=1'-0"

PRELIMINARY - NOT FOR CONSTRUCTION

Due to electronic distribution, this drawing may not be printed to the scale indicated on the drawings. Do NOT use scale to determine dimensions or sizes.

ANGUS YOUNG
 Architecture
 Engineering
 Interior Design

255 South Bascom Street, Suite 200, Madison, WI 53706-1503
 Tel: 608.261.3236 Fax: 608.256.6844
 www.angusyong.com

**MADISON POLICE DEPARTMENT
 TRAINING CENTER - PHASE I
 CITY OF MADISON
 MADISON, WISCONSIN**

PROJECT NUMBER	103213
DATE	02/20/10
APPROVED BY	[Signature]
REVIEWED BY	[Signature]
DRAWN BY	KAU
SCALE	1/8"=1'-0"
DATE	02/20/10

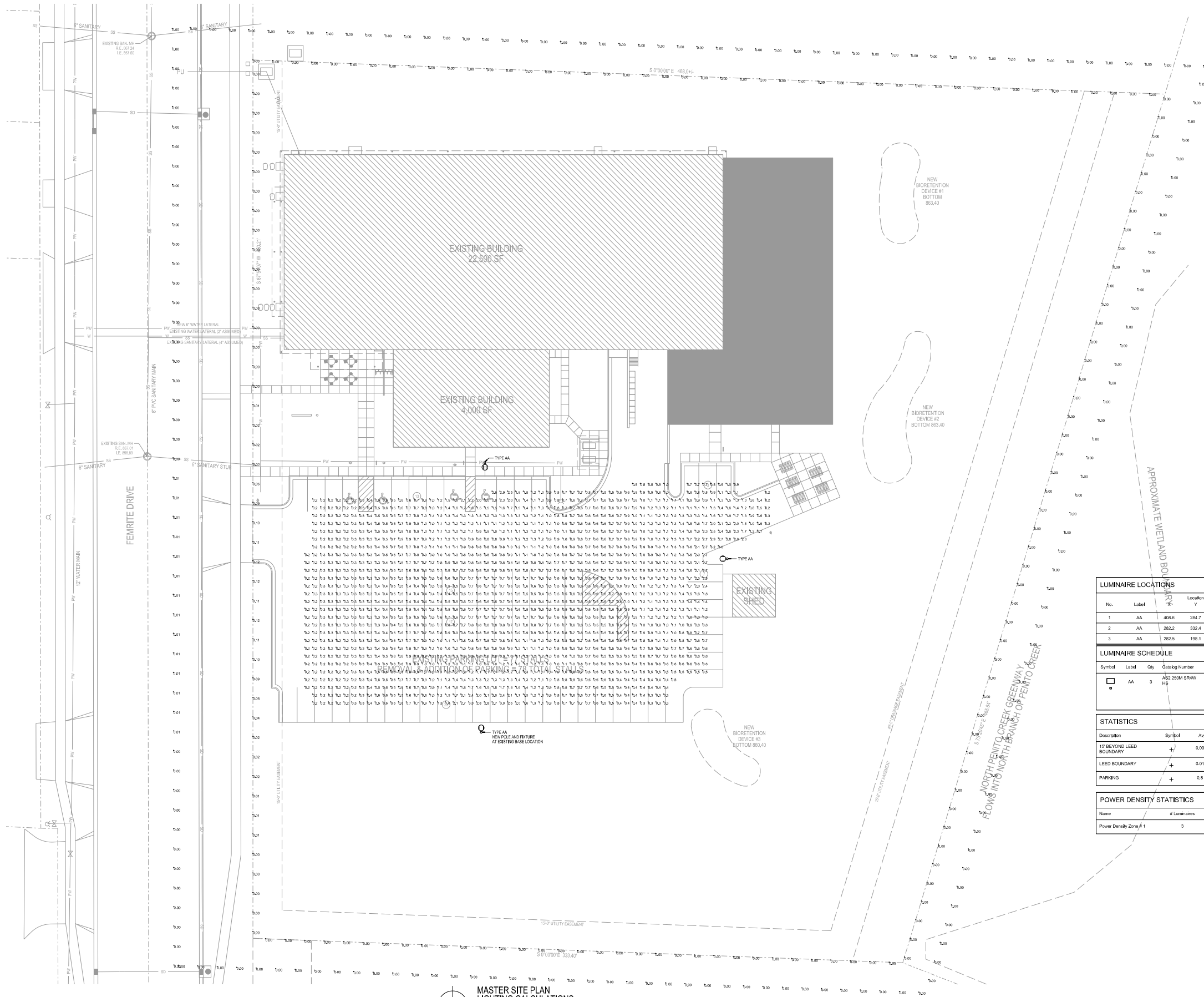
REVISIONS

NO.	DATE	DESCRIPTION

ESUNANCES
 URBAN DESIGN COMMISSION - 02/20/10

Copyright © 2010 Angus+Young Associates, Inc. All Rights Reserved.

C201



MASTER SITE PLAN
LIGHTING CALCULATIONS
SCALE: 1/8" = 1'-0"



CALL TOLL FREE 1-800-242-8511
MILWAUKEE AREA 414-259-1181
FAX A LOCATE 1-800-338-3860
TDD (HEARING IMPAIRED) 1-800-542-2289
ONLINE: www.DiggersHotline.com
WISCONSIN STATUTE HEARS (201) REQUIRES A MINIMUM OF THREE (3) WORKING DAYS NOTICE PRIOR TO EXCAVATION.

No.	Label	X	Y	Z	MH	Orientation	TR	X	Y	Z
1	AA	406.6	284.7	30.0	30.0	-90.0	0.0	407.4	284.7	0.0
2	AA	282.2	332.4	30.0	30.0	180.0	0.0	282.2	331.2	0.0
3	AA	282.5	198.1	30.0	30.0	1.0	0.0	282.5	198.2	0.0

Symbol	Label	Qty	Catalog Number	Description	Lamp	Fil.	Lumens	LLF	Watts
□	AA	3	AS2 250M SRW	ARCHITECTURAL ARM-MOUNTED CUTOFF LUMINAIRE WITH SRW REFLECTOR BLACK INTERNAL HOUSE SIDE SHIELD.	ONE (1) 250 WATT CLEAR 0/28 PULSE START METAL HALIDE LAMP IN HORIZONTAL POSITION	AS2_250M_SR 4W_LHS.kls	22500	0.95	288

Description	Symbol	Avg	Max	Min	Max/Min	Avg/Min
15' BEYOND LEED BOUNDARY	+	0.00 fc	0.01 fc	0.00 fc	N/A	N/A
LEED BOUNDARY	+	0.01 fc	0.12 fc	0.00 fc	N/A	N/A
PARKING	+	0.8 fc	3.2 fc	0.2 fc	16.0:1	4.0:1

Name	# Luminaires	Total Watts	Area	Density
Power Density Zone # 1	3	864.00 W	29044.27 R²	0.03 W/R²

KEYNOTES

1

GENERAL NOTES

- PARKING REQUIREMENTS: FOR BUSINESS/TRADE SCHOOLS: PROVIDE 1 STALL PER 2 EMPLOYEES PLUS 1 STALL PER STUDENT
6 EMPLOYEES / 2 + 3 STALLS
80 CAPACITY ASSESSMENT: 9 = 31 STALLS
TOTAL REQUIRED PARKING: 34 STALLS
TOTAL OFFERED PARKING: 71 STALLS
TOTAL PROPOSED PARKING: 70 STALLS
BICYCLE PARKING: 1 PER 10 PARKING SPACES = 8 BIKE SPACES

Due to electronic distribution, this drawing may not be printed to the scale indicated on the drawings. Do NOT use scale to determine dimensions or elevations. Do NOT use scale to determine dimensions or elevations.

REVISIONS	ISSUANCES
	URBAN DESIGN COMMISSION - 06/20/10

Angus Young
Architecture
Engineering
Interior Design
255 South Bascom Street, Suite 200, Madison, WI 53706-1733
PH: 608.262.3326 FX: 608.256.6844
www.angusyoung.com

MADISON POLICE DEPARTMENT
TRAINING CENTER - PHASE I
CITY OF MADISON
MADISON, WISCONSIN

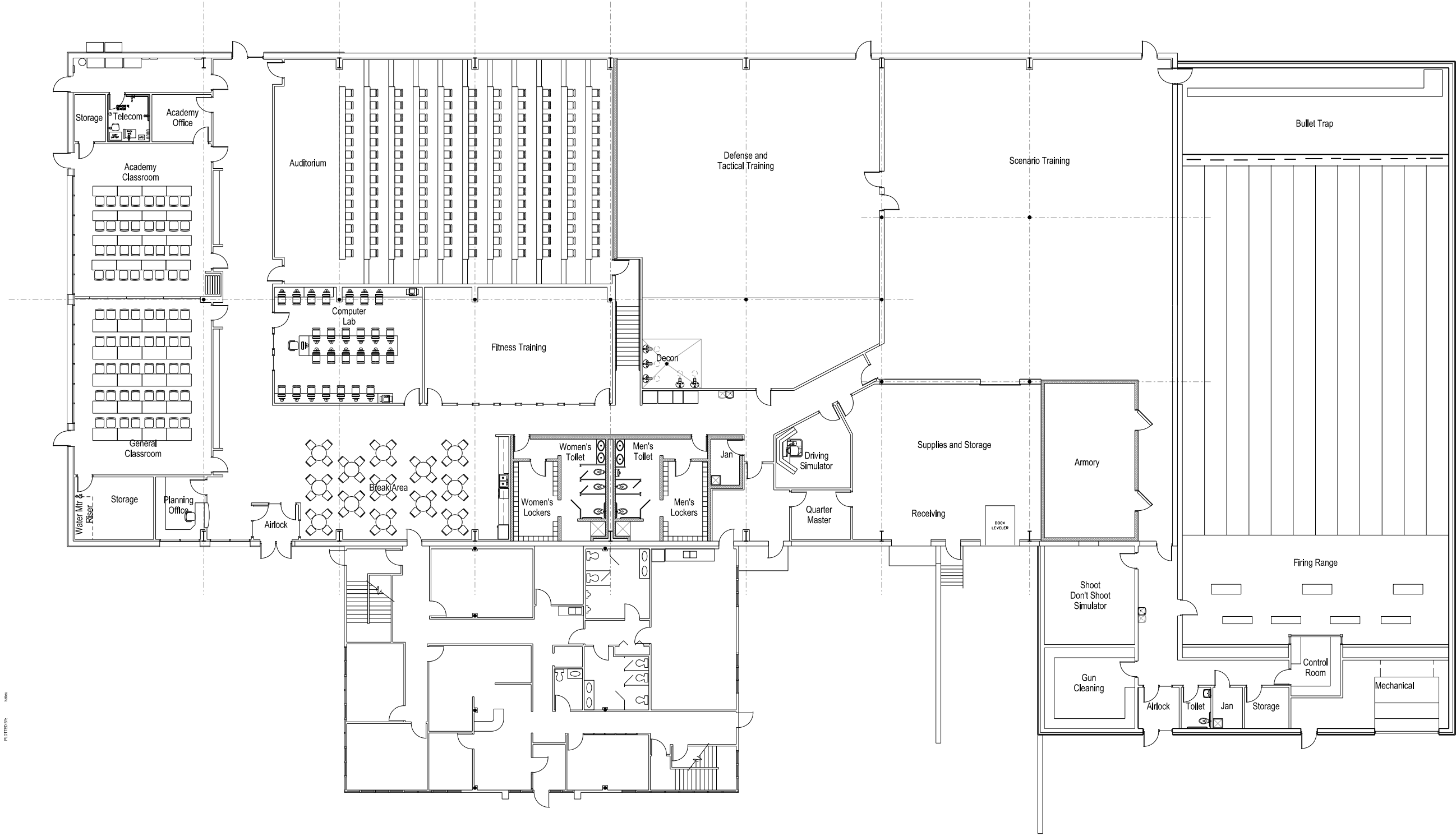
PROJECT NUMBER: 000000000000000000
APPROVED BY: [Signature]
REVIEWED BY: [Signature]
DRAWN BY: DLO
DATE: 06/20/10 9:12:38 AM

MASTER SITE PLAN
LIGHTING CALCULATIONS

C601

PRELIMINARY - NOT FOR CONSTRUCTION

ORIGIN: 10/27/09 10:47 AM
 X:\1000\1000\1000\1000.dwg
 SCALE: 1/8" = 1'-0"
 PLOT DATE: 10/27/09 10:47 AM



NORTH
 FIRST FLOOR PLAN
 SCALE: 1/8" = 1'-0"

Due to electronic distribution, this drawing may not be printed to the scale indicated on the drawings. Do NOT use scale to determine dimensions or sizes.

**MADISON POLICE DEPARTMENT
 TRAINING CENTER - PHASE I
 CITY OF MADISON
 MADISON, WISCONSIN**

Angus Young
 Architecture
 Engineering
 Interior Design

255 South Bates Street, Madison, WI 53704-1732
 Tel: 608.262.3226 Fax: 608.256.6364
 www.angusyoung.com

PROJECT NUMBER: 09000
 APPROVED BY: [Signature]
 REVIEWED BY: [Signature]
 DRAWN BY: JPH
 8/24/2010 9:11:57 AM

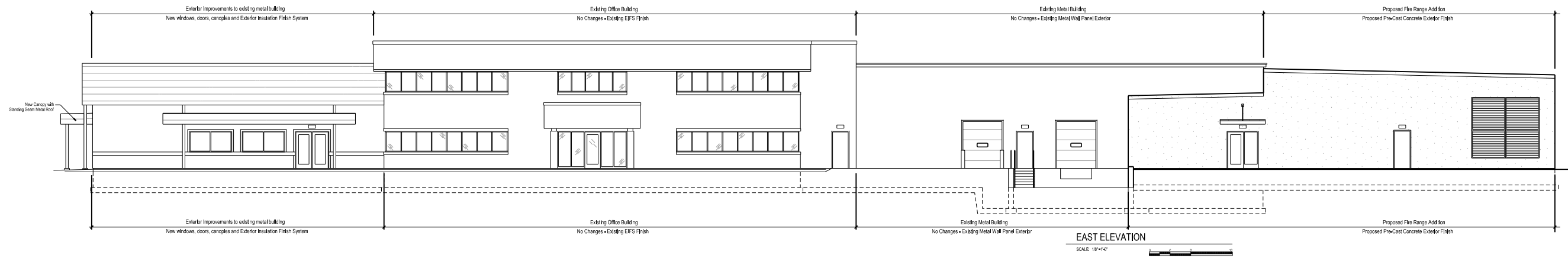
ISSUANCES:
 URBAN DESIGN COMMISSION - 08/25/2010

REVISIONS:

Copyright © 2010 Angus Young Associates, Inc. All Rights Reserved.

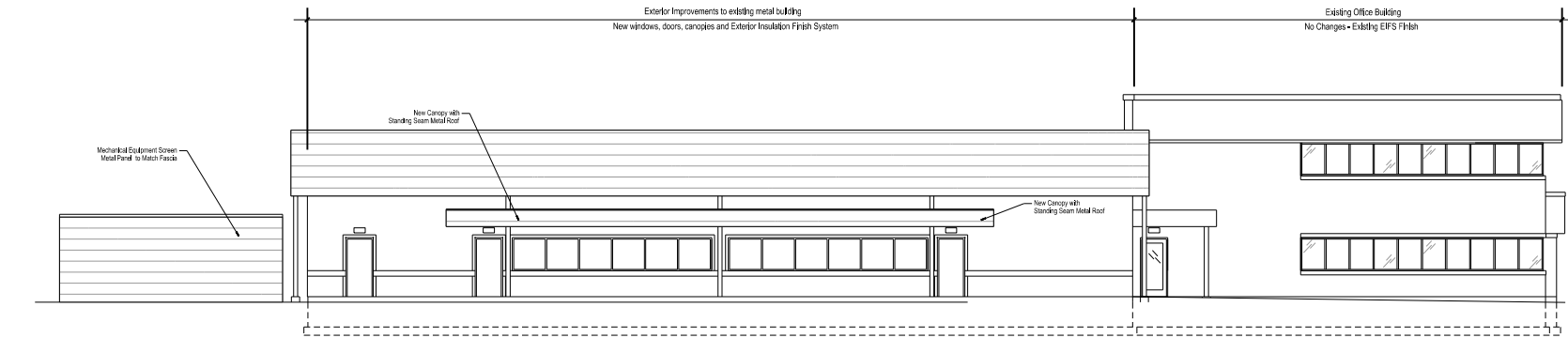
PRELIMINARY - NOT FOR CONSTRUCTION

A100



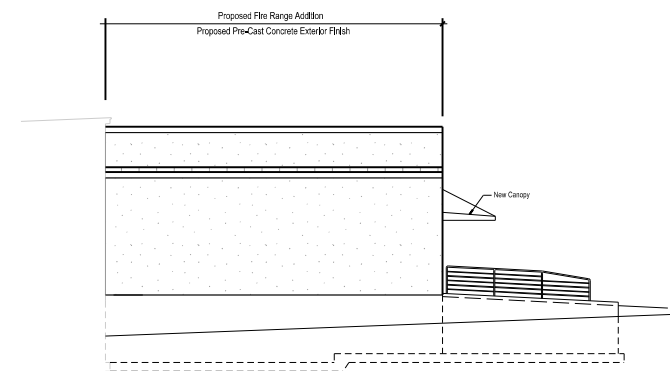
EAST ELEVATION

SCALE: 1/8"=1'-0"



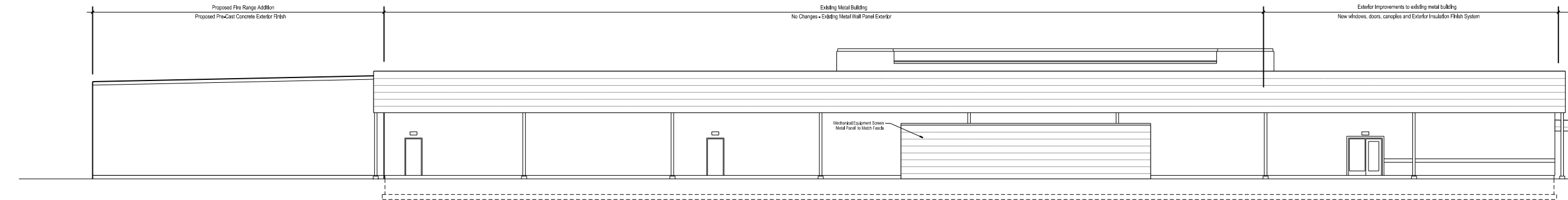
SOUTH ELEVATION

SCALE: 1/8"=1'-0"



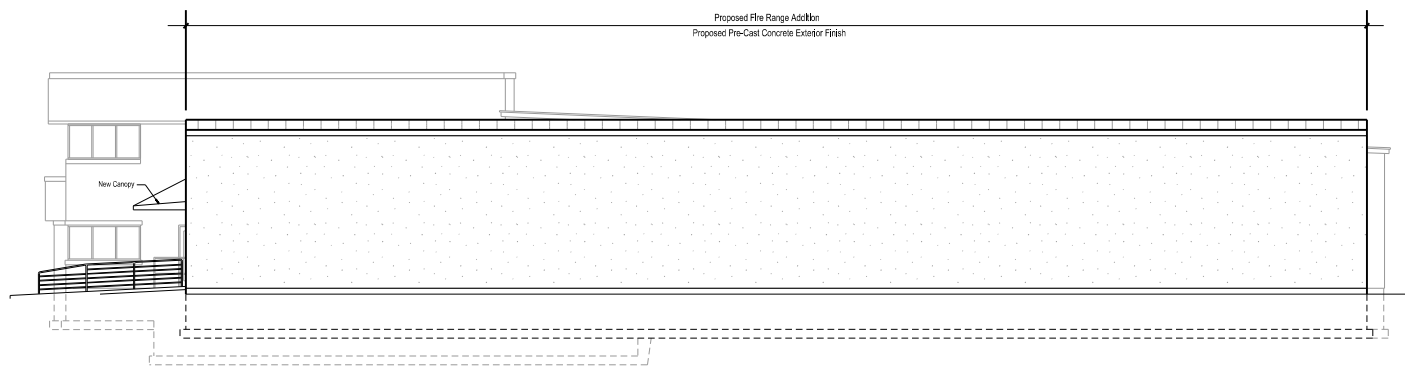
PARTIAL SOUTH ELEVATION

SCALE: 1/8"=1'-0"



WEST ELEVATION

SCALE: 1/8"=1'-0"



NORTH ELEVATION

SCALE: 1/8"=1'-0"



SCALE: 1/8"=1'-0"
PLOTTER: B1

ORIGIN: 10/17/12
X:\1010\1010\1010\1010.dwg

Due to electronic distribution, this drawing may not be printed to the scale indicated on the drawings. Do NOT use scale to determine dimensions or sizes. Do NOT use scale to determine dimensions or sizes.

REVISIONS
ISSUANCES
URBAN DESIGN COMMISSION - 06/20/10

Angus Young
Architecture
Engineering
Interior Design
255 South Bates Street, Appleton, WI 54912-1326
TEL: 920.836.3326 FAX: 920.836.6664
www.angusyoung.com

MADISON POLICE DEPARTMENT
TRAINING CENTER - PHASE I
CITY OF MADISON
MADISON, WISCONSIN

PROJECT NUMBER
1010
APPROVED BY
REVIEWED BY
DRAWN BY
DLH
8/24/2010 11:13:23 AM

EXTERIOR ELEVATIONS

PRELIMINARY - NOT FOR CONSTRUCTION

A400

LANDSCAPE WORKSHEET

Parking Lots, Storage Areas and Loading Areas (Section 28.04 Madison General Ordinance)

Project Location/Address: 5702 Femrite Drive
Name of Project: City of Madison Police Training Center
Owner/Contact: Angus Young Associates - Katie Udell
Address: 555 S. River Street - Janesville, WI 53548

FOR PARKING LOTS WITH GREATER THAN 20 STALLS, LANDSCAPE PLANS MUST BE STAMPED BY A REGISTERED LANDSCAPE ARCHITECT

I. Number of Trees Required

The number of trees required for a parking lot is based on the number of parking stalls. Using the Schedule for Required Trees on the reverse side of this worksheet, determine the number of trees required. (Example: One tree is required for 10 parking stalls).

Landscape requirements for storage areas are determined by dividing the total square footage of the storage area by (300) square feet. This converts area to stalls.

[Example: 10,000 square feet is equivalent to (33) stalls or (3) trees and (160) points].

Number of Parking Stalls _____ 78

Total Square Footage of the Storage Area _____
Divided by Three Hundred (300) Square Feet _____

Number of Canopy Shade Trees Required (2" - 2 1/2" Caliper) _____
(See Schedule on reverse side) 6

Met with 4 Existing and 2 New Shade Trees

II. Number of Landscape Points Required

The number of points required is also based on the number of parking stalls. Using the Point Schedule for Landscape Elements on the reverse side of this worksheet, determine the number of points required. (Example: 49.5 points are required for 10 stalls). A point fraction of (.5) or less may be disregarded, while a fraction in excess of (.5) must be counted as one point. Thus: 49.5 points would be rounded down to 49.0 points required.

_____ 361.7

The number of points required for loading areas is (75) points for each loading berth. _____
(See Schedule on reverse side) 150

Number of Points Required (See Schedule on reverse side) _____
511.7

Tabulation of Points and Credits

Indicate below the quantity and points for all pertinent landscape elements. Also, credit information for boundary screening and any existing elements to be retained.

ELEMENT	POINT VALUE	QUANTITY	POINTS ACHIEVED	CREDITS	
				QUANTITY	POINTS
Canopy Tree: 2" - 2 1/2"	35	12	385		
Deciduous Shrub	2	30	60		
Evergreen Shrub	3	11	33		
Decorative Wall or Fence (per 10 L.F.)	5				
Earth Berm (per 10 L.F.) Avg. Height 30" Avg. Height 15"	5 2	6	12		
Evergreen Trees 3' height minimum	15				
Canopy Tree or Small Tree 1 1/2" - 2" Caliper (i.e., Crab, Hawthorn)	15				
Sub Totals			525	+	

62 L.F @ 15" Height

TOTAL
= 525

Total No. of Points Provided
(Equal to or greater than points required)

*Trees required in Part I above, are not to be included in the point count.

Approved by: _____ Date: _____



Madison Police Training Facility

Perspective Facing North



Madison Police Training Facility

Perspective Facing Northwest



Madison Police Training Facility

Aerial Perspective

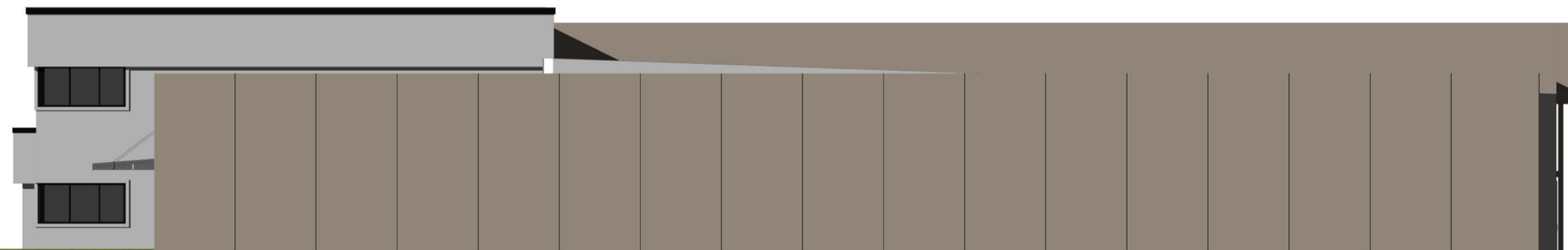


Madison Police Training Facility

Perspective Facing Northwest



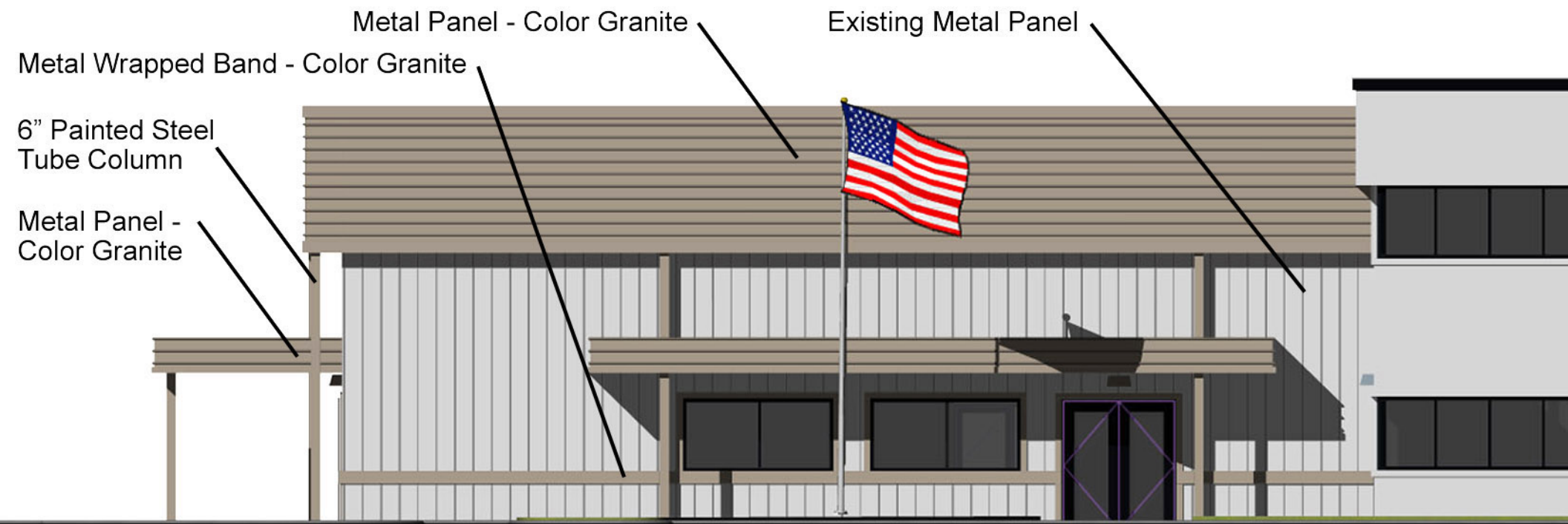
South Elevation



North Elevation



East Elevation



Metal Panel - Color Granite

Existing Metal Panel

Metal Wrapped Band - Color Granite

6" Painted Steel
Tube Column

Metal Panel -
Color Granite

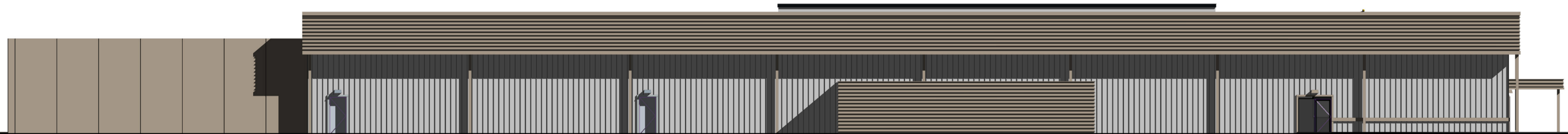
East Elevation

City of Madison Madison Police Training Center



- Phase I
- Phase II
- Phase III
- Existing Office





West Elevation