



## PEDESTRIAN ATMOSPHERE ALONG NORTH FACADE

SCALE: 1:1.84

NOUVEAU APARTMENTS AREA SUMMARY						
	NSF/Floor	APT floors	AREA	N/GSF floor efficiency	UNITS IN BUILDING	
RESIDENTIAL APARTMENTS	4175	3	12525			
	3916	3	11748	75%		
RETAIL COMMERCIAL			3832			
BASEMENT			2050			
Total GSF	Building		18407			
BEDROOMS		NSF/unit		Units/floor	Total NSF/floor	
		500		3	1500	9
EFFICIENCIES		480		3	1440	9
				stories		
NET RENTABLE AREA				3	2940	8820

WINDOW TO WALL AREA RATIO SUMMARY						
WEST ELEVATION GLASS/ WALL RATIO						
	# windows	area per window	total window area/ floor	Gross wall area/floor	G/W Ratio	
4TH FLOOR	7	18	126	595	21%	
3RD FLOOR	7	18	126	595	21%	
2ND FLOOR	7	18	126	595	21%	
1ST FLOOR	0	21	0	595	0%	
TOTAL			378	2380	16%	
SOUTH ELEVATION GLASS/WALL RATIO						
4TH FLOOR	8	18	144	719	20%	
3RD FLOOR	8	18	144	719	20%	
2ND FLOOR	8	18	144	719	20%	
1ST FLOOR	0	0	0	719	0%	
TOTAL			432	2876	15%	
NORTH ELEVATION APARTMENT FLOORS GLASS/WALL RATIO						
4TH FLOOR	7	25	175	719	24%	
3RD FLOOR	7	18	126	719	18%	
2ND FLOOR	7	18	126	719	18%	
TOTAL			427	2157	20%	
EAST ELEVATION APARTMENT FLOORS GLASS/WALL RATIO						
4TH FLOOR	5	25	125	719	17%	
3RD FLOOR	5	18	90	719	13%	
2ND FLOOR	5	18	90	719	13%	
TOTAL			305	2157	14%	
EAST AND NORTH ELEVATION STREET LEVEL GLASS/WALL RATIO						
NORTH ELEVATION	5	86.6	433			
	1	50	50			
	1	36	36			
TOTAL			519	989	52%	
EAST ELEVATION	3	86.6	259.8			
	1	50	50			
	1	36	36			
TOTAL			345.8	680	51%	
			TOTAL RESIDENTIAL GLASS AREA	TOTAL RESIDENTIAL WALL AREA		
<b>GRAND TOTAL ALL RESIDENTIAL FLOORS GLASS TO WALL RATIO</b>			1542	9570	<b>16%</b>	

# THE NOUVEAU

A Keller Real Estate Group Development

## ARCHITECT

**LINVILLE ARCHITECTS, LLC**  
 408 West Wilson Street Madison, WI 53703  
 608.251.6696  
 elinville@linvillearchitects.com

## CONSULTANTS

Architect:  
 Linville Architects  
 408 Wilson Ave  
 Madison, Wisconsin 53704

Civil Engineer:  
 Professional Engineering LLC  
 818 N. Meadowbrook Ln  
 Waunakee, Wisconsin 53597

Landscape Architect:  
 Ken Saika  
 Madison, Wisconsin

DATE: MAY 21, 2014  
 INFORMATIONAL  
 MEETING

## COVER SHEET



## SITE LOCATION

SCALE: 1:1.46

# A-1.1

SHEET 1 OF 14

# THE NOUVEAU

A Keller Real Estate Group Development

## ARCHITECT

**LINVILLE ARCHITECTS, LLC**  
 408 West Wilson Street Madison, WI 53703  
 608.251.6696  
 elinville@linvillearchitects.com

## CONSULTANTS

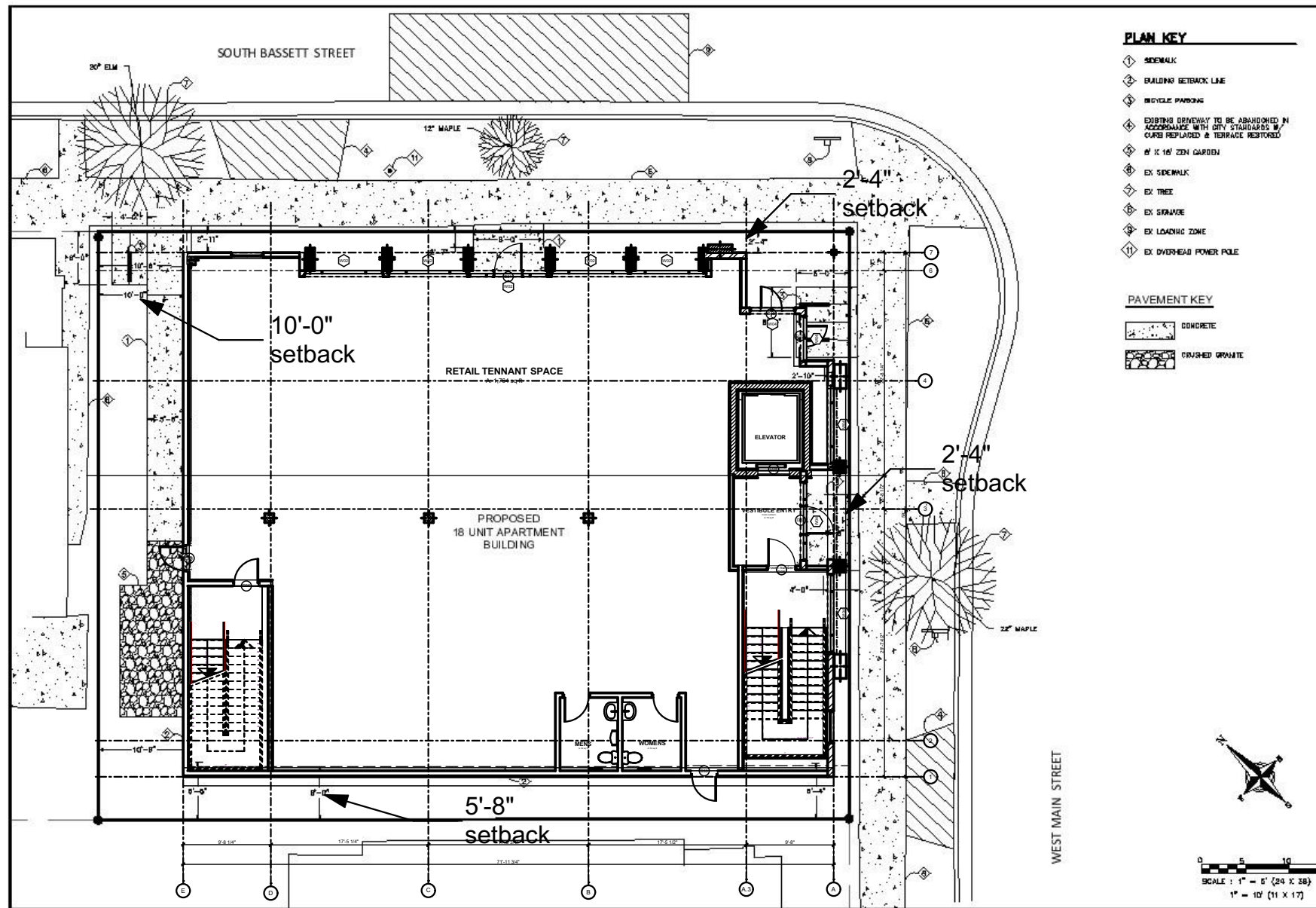
Architect:  
 Linville Architects  
 408 Wilson Ave  
 Madison, Wisconsin 53704

Civil Engineer:  
 Professional Engineering LLC  
 818 N. Meadowbrook Ln  
 Waunakee, Wisconsin 53597

Landscape Architect:  
 Ken Saika  
 Madison, Wisconsin

DATE: MAY 21, 2014  
 INFORMATIONAL  
 MEETING

## Architectural Site Plan

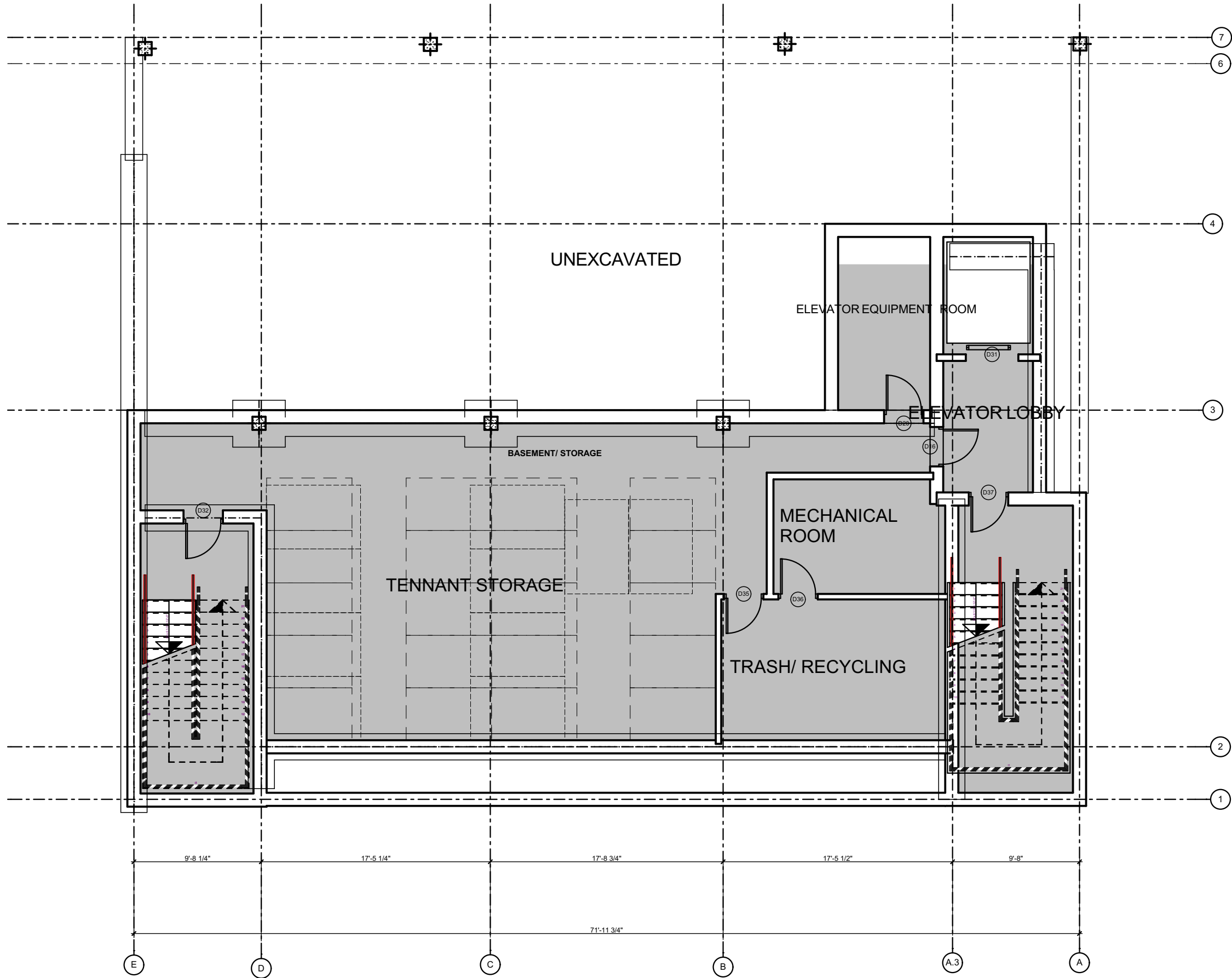


## SITE PLAN

SCALE: 1/16" = 1'-0"

# A-2.1

SHEET 2 OF 14



**BASEMENT 2050 GSF**

# THE NOUVEAU

*A Keller Real Estate  
Group Development*

## ARCHITECT

**LINVILLE ARCHITECTS, LLC**  
 408 West Wilson Street Madison, WI 53703  
 608.251.6696  
 elinville@linvillearchitects.com

## CONSULTANTS

Architect:  
 Linville Architects  
 408 Wilson Ave  
 Madison, Wisconsin 53704

Civil Engineer:  
 Professional Engineering LLC  
 818 N. Meadowbrook Ln  
 Waunakee, Wisconsin 53597

Landscape Architect:  
 Ken Saika  
 Madison, Wisconsin

DATE: MAY 21, 2014  
 INFORMATIONAL  
 MEETING

## Basement Plan

# A-2.2

SHEET 3 OF 14

# THE NOUVEAU

A Keller Real Estate  
Group Development

## ARCHITECT

 LINVILLE ARCHITECTS, LLC  
408 West Wilson Street Madison, WI 53703  
608.251.6696  
elinville@linvillearchitects.com

## CONSULTANTS

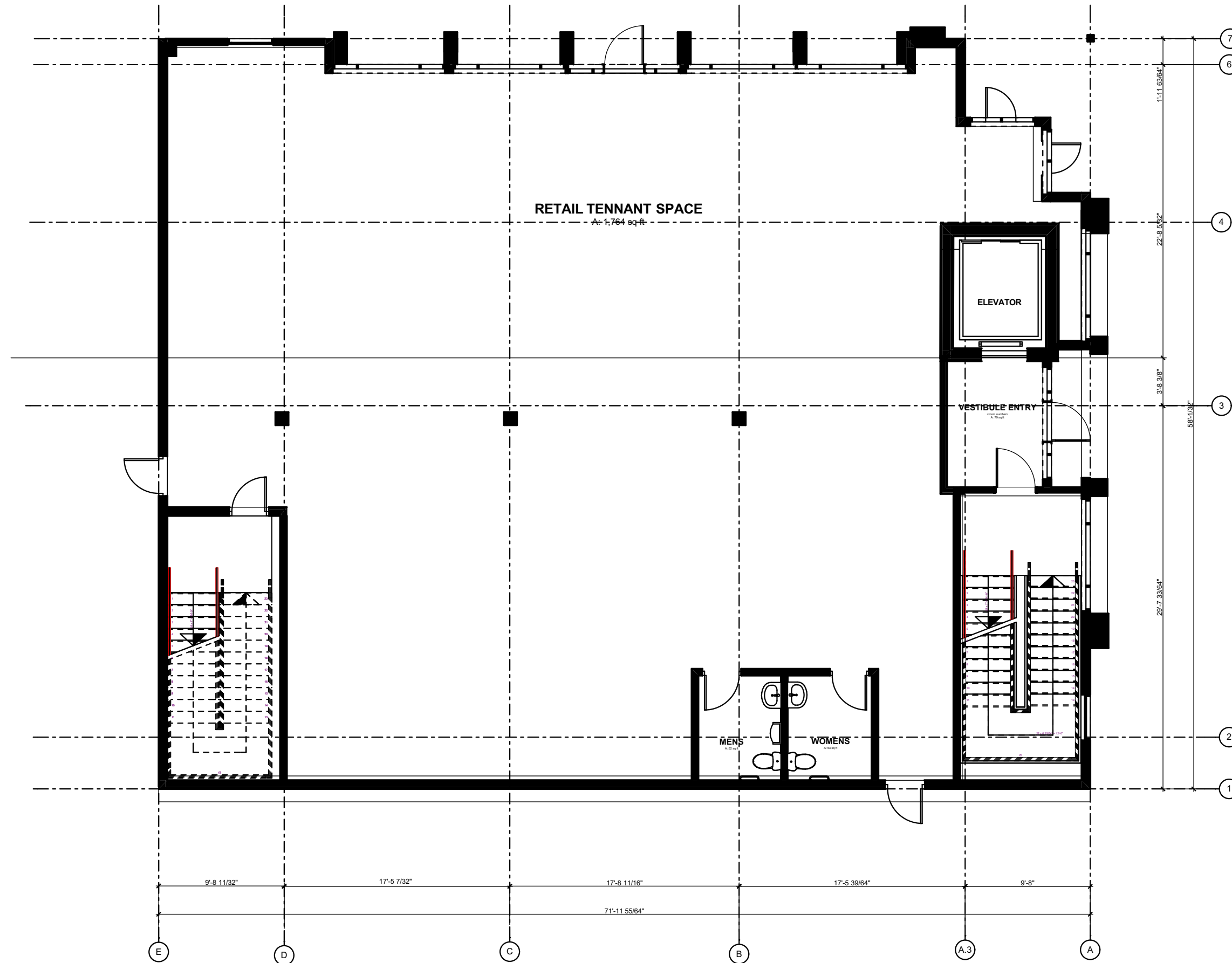
Architect:  
Linville Architects  
408 Wilson Ave  
Madison, Wisconsin 53704

Civil Engineer:  
Professional Engineering LLC  
818 N. Meadowbrook Ln  
Waunakee, Wisconsin 53597

Landscape Architect:  
Ken Saika  
Madison, Wisconsin

DATE: MAY 21, 2014  
INFORMATIONAL  
MEETING

## 1st FLOOR PLAN



FIRST FLOOR PLAN 3830 GLSF

# A-2.3

SHEET 4 OF 14

# THE NOUVEAU

A Keller Real Estate  
Group Development

## ARCHITECT

 LINVILLE ARCHITECTS, LLC  
408 West Wilson Street Madison, WI 53703  
608.251.6696  
elinville@linvillearchitects.com

## CONSULTANTS

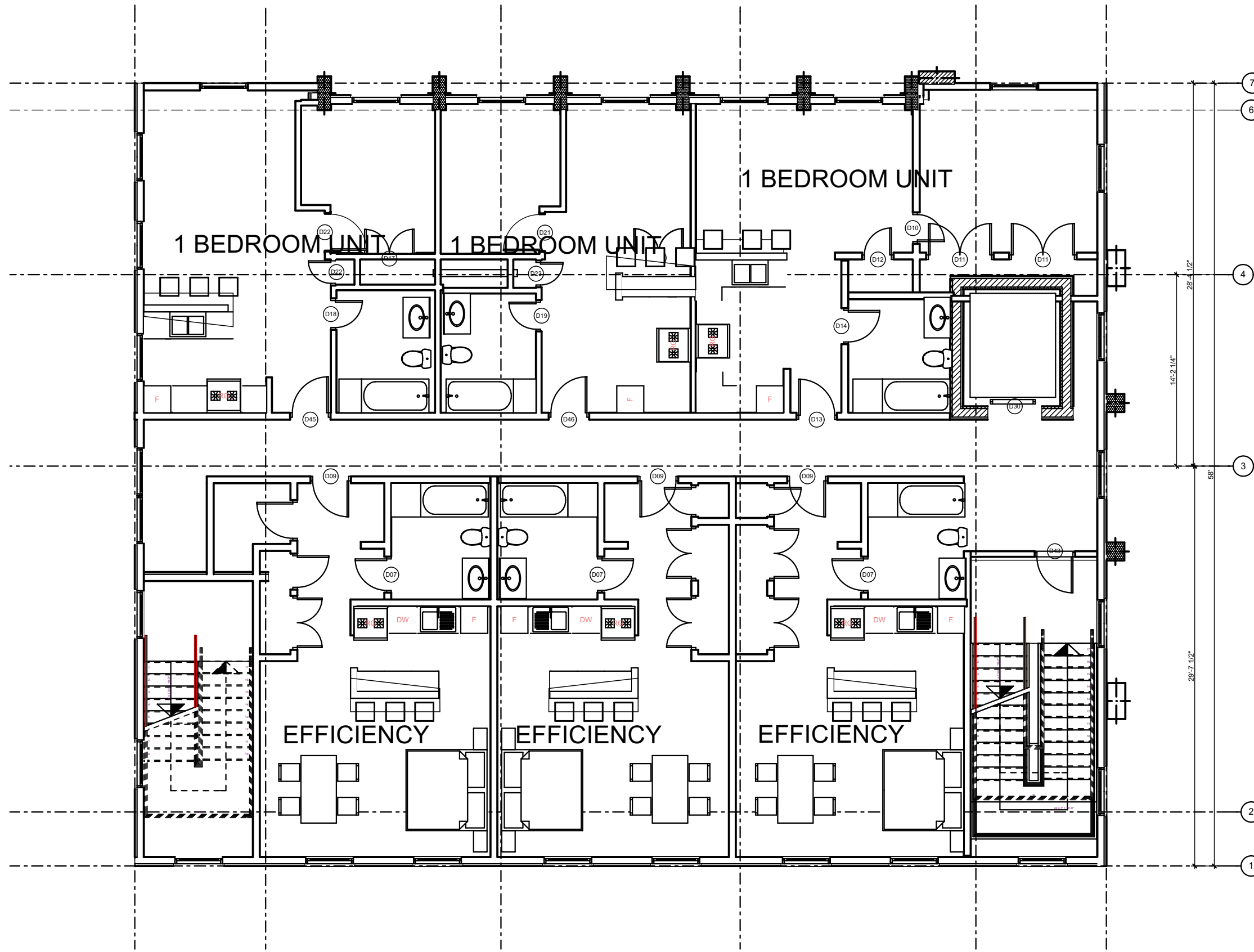
Architect:  
Linville Architects  
408 Wilson Ave  
Madison, Wisconsin 53704

Civil Engineer:  
Professional Engineering LLC  
818 N. Meadowbrook Ln  
Waunakee, Wisconsin 53597

Landscape Architect:  
Ken Saika  
Madison, Wisconsin

DATE: MAY 21, 2014  
INFORMATIONAL  
MEETING

## 2nd FLOOR PLAN



## 2nd FLOOR PLAN 4175 GSF

SCALE: 1/8" = 1'-0"

# A-2.4

SHEET 5 OF 14

# THE NOUVEAU

A Keller Real Estate  
Group Development

## ARCHITECT

 LINVILLE ARCHITECTS, LLC  
408 West Wilson Street Madison, WI 53703  
608.251.6696  
elinville@linvillearchitects.com

## CONSULTANTS

Architect:  
Linville Architects  
408 Wilson Ave  
Madison, Wisconsin 53704

Civil Engineer:  
Professional Engineering LLC  
818 N. Meadowbrook Ln  
Waunakee, Wisconsin 53597

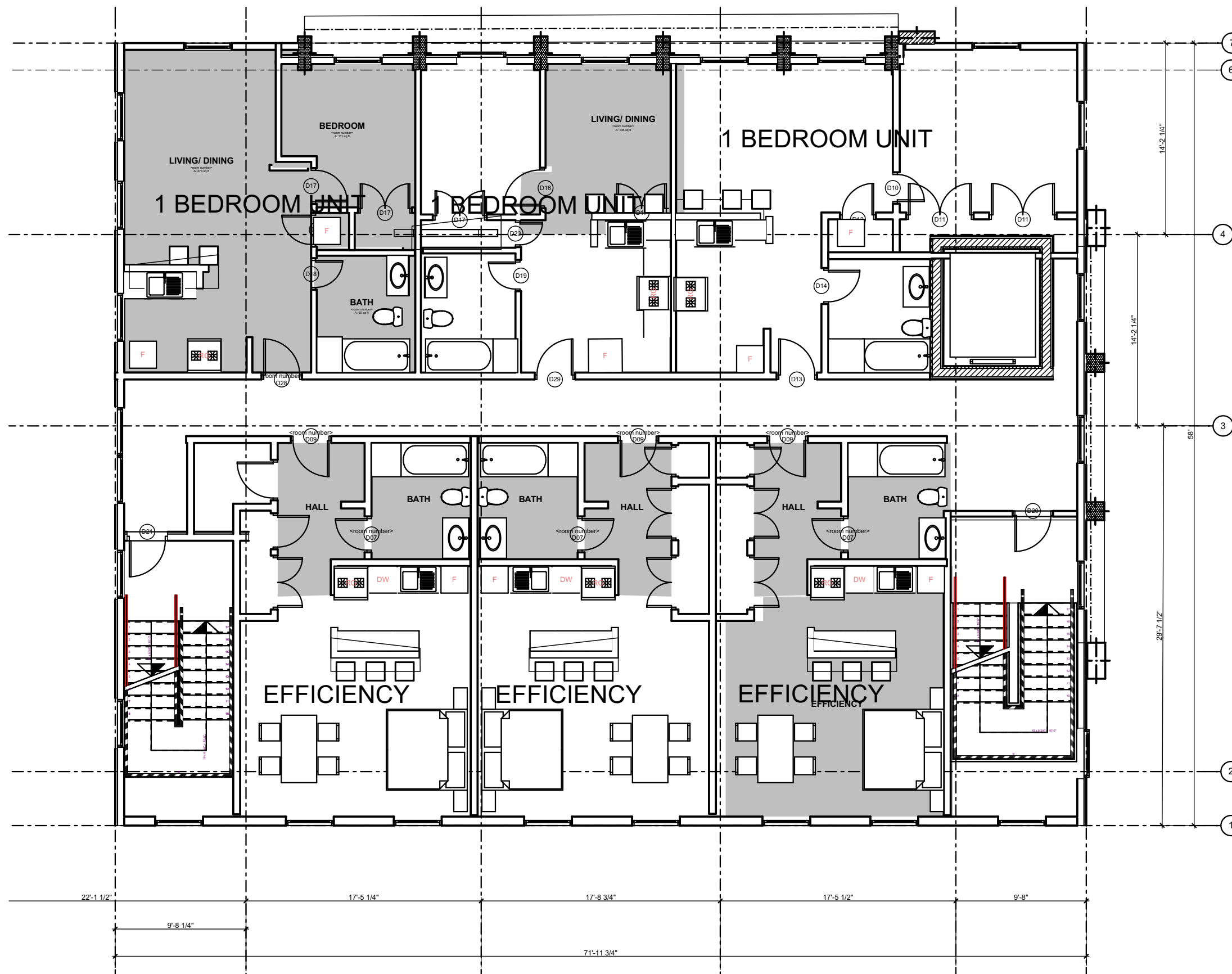
Landscape Architect:  
Ken Saika  
Madison, Wisconsin

DATE: MAY 21, 2014  
INFORMATIONAL  
MEETING

3. 3rdfloor

# A-2.5

SHEET 6 OF 14



## 3rd FLOOR PLAN 4175 GSF

SCALE: 1/8" = 1'-0"

# THE NOUVEAU

A Keller Real Estate  
Group Development

## ARCHITECT

 LINVILLE ARCHITECTS, LLC  
408 West Wilson Street Madison, WI 53703  
608.251.6696  
elinville@linvillearchitects.com

## CONSULTANTS

Architect:  
Linville Architects  
408 Wilson Ave  
Madison, Wisconsin 53704

Civil Engineer:  
Professional Engineering LLC  
818 N. Meadowbrook Ln  
Waunakee, Wisconsin 53597

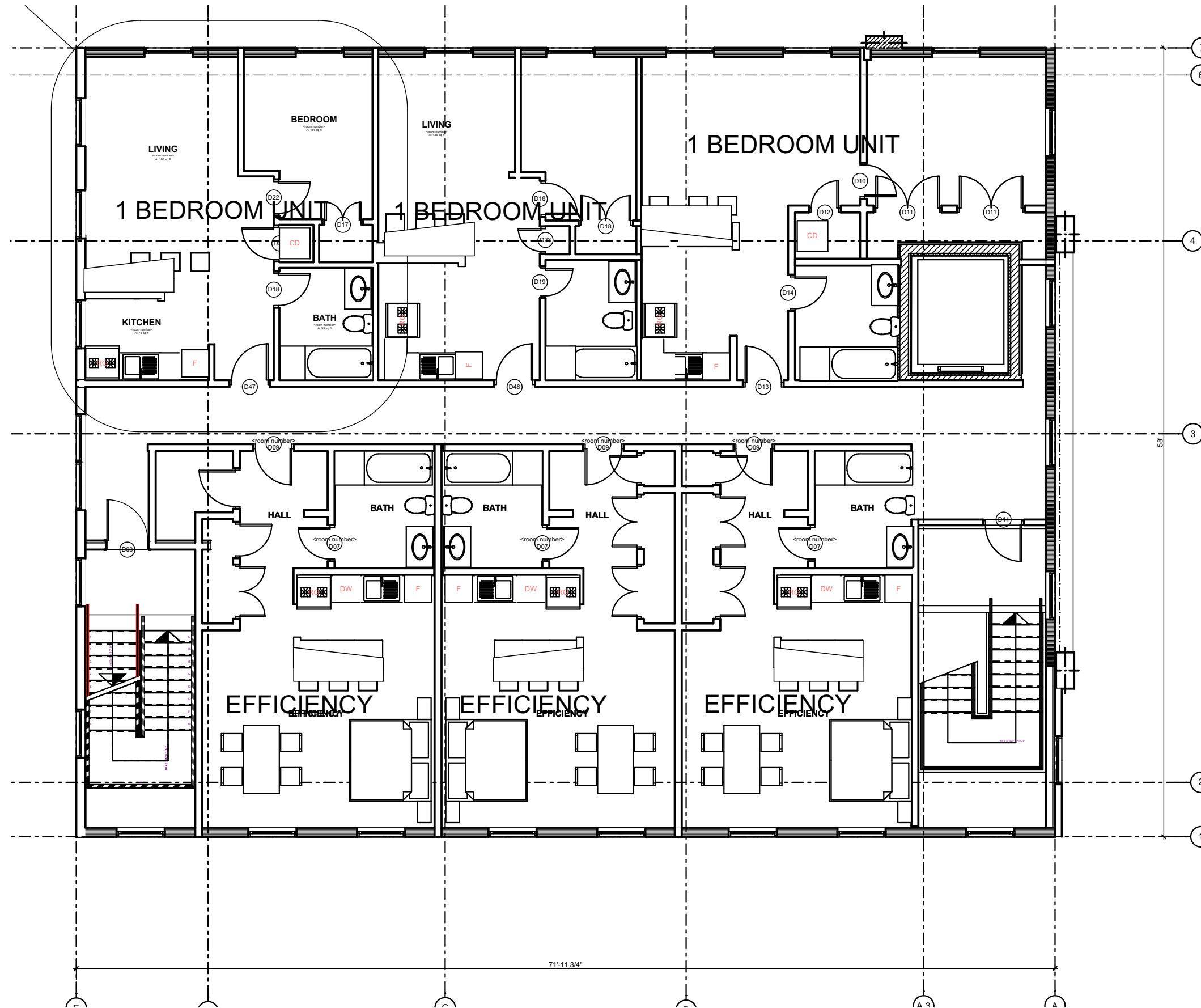
Landscape Architect:  
Ken Saika  
Madison, Wisconsin

DATE: MAY 21, 2014  
INFORMATIONAL  
MEETING

4. 4th floor

# A-2.7

SHEET 8 OF 14



4th FLOOR 4175 GSF



METAL COPING -  
RUSTIC BLOCK

E.I.F.S.

BRICK

METAL GRID  
STRUCTURE

NORTH ELEVATION

BACK  
LIGHT @  
JUNCTION  
OF METAL  
GRID (TYP)

AWNING  
SIGNAGE PANEL  
TYPICAL





WEST  
ELEVATION

APARTMENT  
ENTRY

SIGN  
PANEL

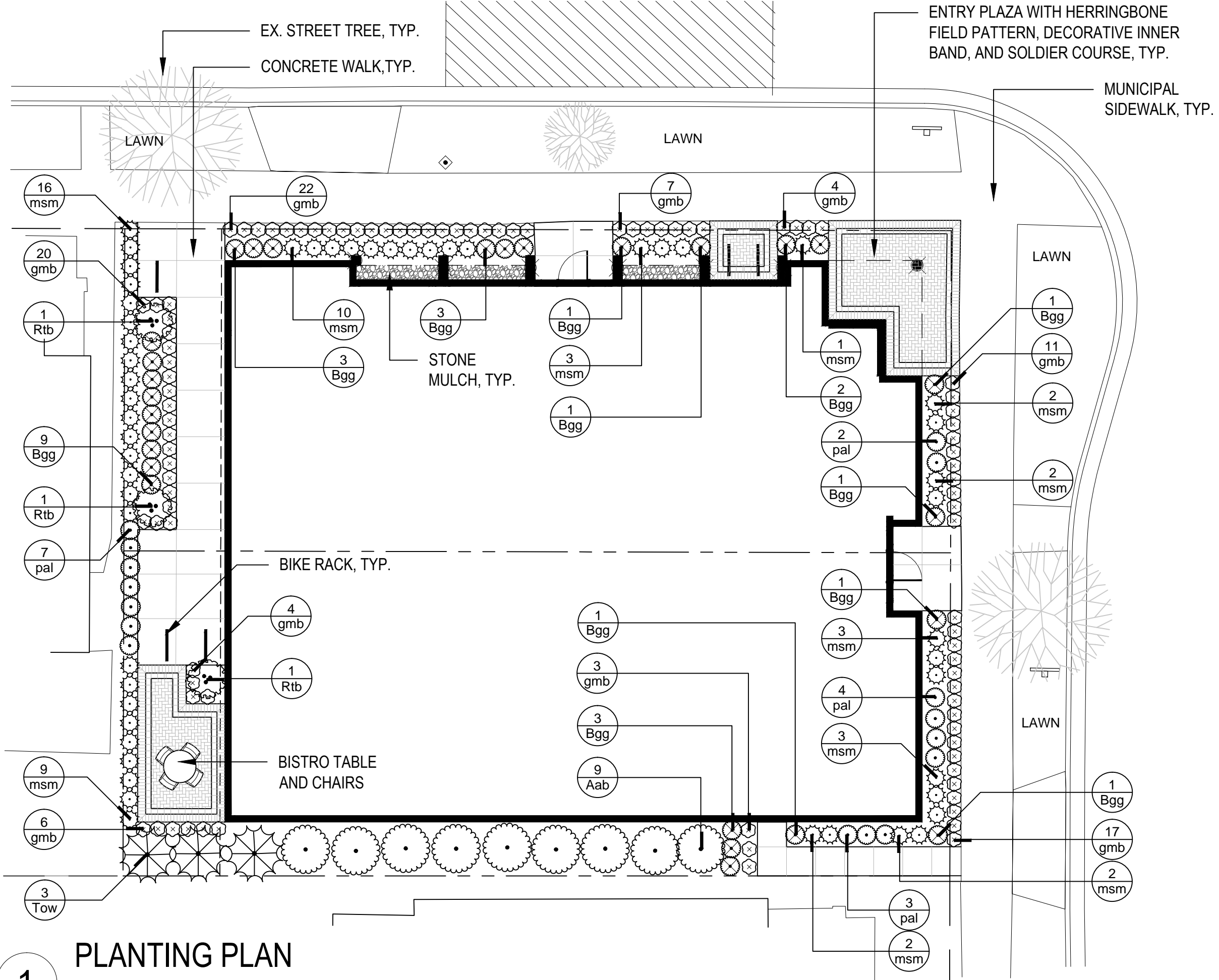
RETAIL  
ENTRY



SOUTH ELEVATION



WEST ELEVATION



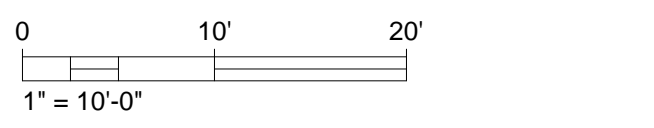
THE NOUVEAU  
A Keller Real Estate Group  
Development

ARCHITECT  
LINVILLE ARCHITECTS, LLC  
408 West Wilson Street Madison, WI 53703  
608.251.6696  
elinville@linvillearchitects.com

CONSULTANT  
KEN SAIKI  
DESIGN INC  
LANDSCAPE ARCHITECTS

DATE: 04-01-2014

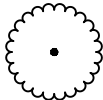


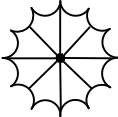



PLANTING PLAN



TRUE PLAN SHEET L100

**1** PLANTING PLAN  
SCALE: 1" = 10"

## PLANT SCHEDULE

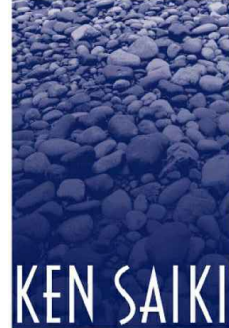
<u>DECIDUOUS SHRUBS</u>	<u>CODE</u>	<u>BOTANICAL NAME</u>	<u>COMMON NAME</u>	<u>SIZE</u>	<u>QTY</u>
	Aab	Aronia arbutifolia `Brilliantissima`	Brilliant Red Chokeberry/Red Chokeberry	5 gal	9
	Rtb	Rhus typhina `Baltiger` TM	Tiger Eyes Sumac	5 gal	3
<u>EVERGREEN SHRUBS</u>	<u>CODE</u>	<u>BOTANICAL NAME</u>	<u>COMMON NAME</u>	<u>SIZE</u>	<u>QTY</u>
	Bgg	Buxus x `Green Gem`	Green Gem Boxwood	3 gal	27
	Tow	Thuja occidentalis `Wintergreen`	Arborvitae	5 gal	3
<u>ORNAMENTAL GRASSES</u>	<u>CODE</u>	<u>BOTANICAL NAME</u>	<u>COMMON NAME</u>	<u>SIZE</u>	<u>QTY</u>
	msm	Miscanthus sinensis `Morning Light`	Eulalia Grass	1 gal	53
<u>PERENNIALS</u>	<u>CODE</u>	<u>BOTANICAL NAME</u>	<u>COMMON NAME</u>	<u>SIZE</u>	<u>QTY</u>
	gmb	Geranium macrorrhizum `Beven`s Variety`	Beven`s Variety Geranium	1 gal	94
	pal	Perovskia atriplicifolia `Little Spire` TM	Little Spire Russian Sage	1 gal	16

THE NOUVEAU  
A Keller Real Estate Group  
Development

### ARCHITECT

 LINVILLE ARCHITECTS, LLC  
408 West Wilson Street Madison, WI 53703  
608.251.6696  
elinville@linvillearchitects.com

### CONSULTANT

 KEN SAKI  
DESIGN INC  
LANDSCAPE  
ARCHITECTS

DATE: 04-01-2014

PLANTING SCHEDULE