

STATE PROJECT	FEDERAL PROJECT	
	PROJECT	CONTRACT
5992-09-41		
5992-09-42		
5992-09-43		

STATE OF WISCONSIN
 DEPARTMENT OF TRANSPORTATION

PLAN OF PROPOSED IMPROVEMENT

CITY OF MADISON, BUCKEYE ROAD
 (MONONA DRIVE TO STOUGHTON ROAD)
 CTH AB
 DANE COUNTY

STATE PROJECT NUMBER
5992-09-41/42/43

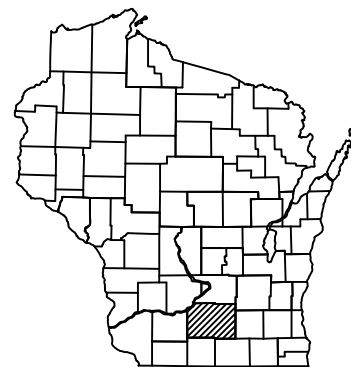
ORDER OF SHEETS

- Section No. 1 Title
- Section No. 2 Typical Sections and Details (Includes Erosion Control Plans)
- Section No. 3 Estimate of Quantities
- Section No. 3 Miscellaneous Quantities
- Section No. 4 Right of Way Plat
- Section No. 5 Plan and Profile
- Section No. 6 Standard Detail Drawings
- Section No. 7 Sign Plates
- Section No. 8 Structure Plans
- Section No. 9 Computer Earthwork Data
- Section No. 9 Cross Sections

TOTAL SHEETS =

PROJECT ID: 5992-09-41/42/43
WITH: N/A

COUNTY: DANE



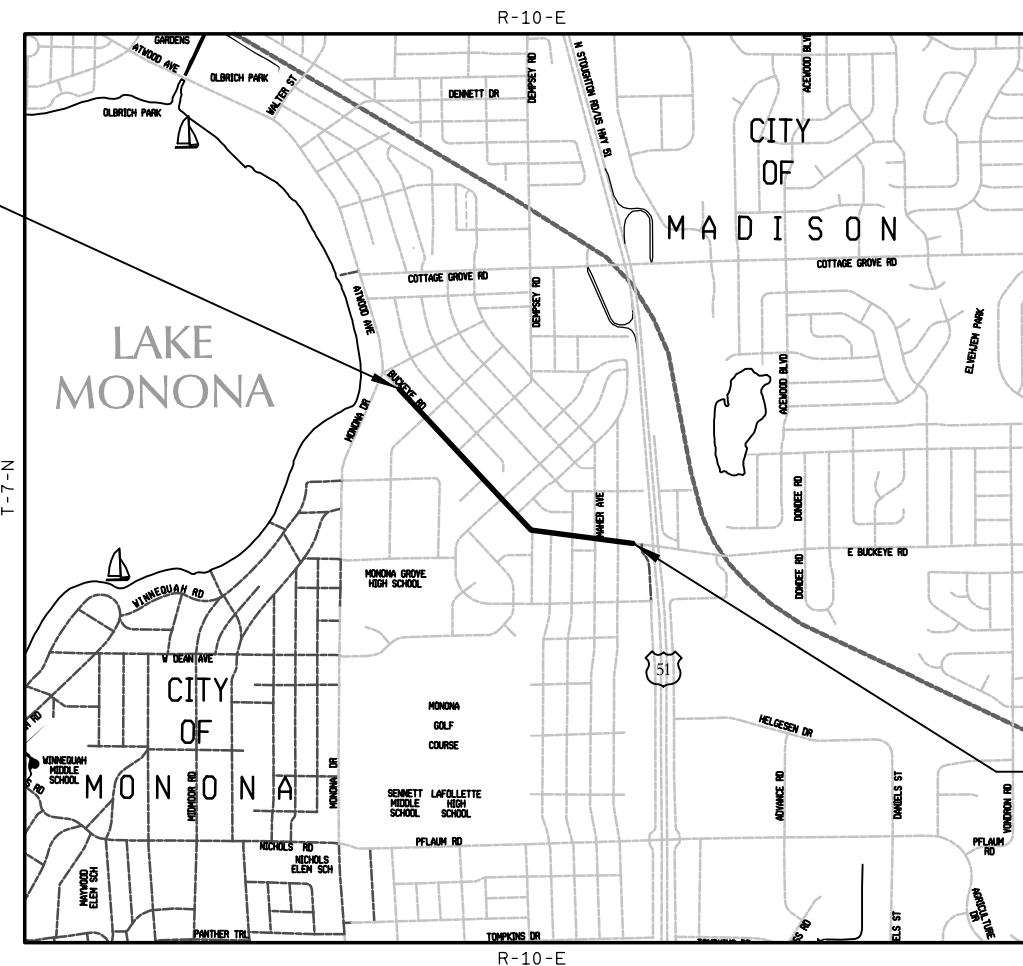
BEGIN PROJECT
 STA. 103+00.00
 Y = 484,578.86
 X = 837,460.50

DESIGN DESIGNATION

- A.A.D.T. (2018) = 5,970
- A.A.D.T. (2038) = 6,900
- D.H.V. = 759
- D.D. = 59/41
- T. = 5.2%
- DESIGN SPEED = 25 M.P.H
- ESALS = 580,000

CONVENTIONAL SYMBOLS

PLAN		PROFILE	
CORPORATE LIMITS		GRADE LINE	
PROPERTY LINE		ORIGINAL GROUND	
LOT LINE		MARSH OR ROCK PROFILE (To be noted as such)	
LIMITED HIGHWAY EASEMENT		SPECIAL DITCH	
EXISTING RIGHT OF WAY		GRADE ELEVATION	
PROPOSED OR NEW R/W LINE		CULVERT (Profile View)	
SLOPE INTERCEPT		UTILITIES	
REFERENCE LINE		ELECTRIC	
EXISTING CULVERT		FIBER OPTIC	
PROPOSED CULVERT (Box or Pipe)		GAS	
COMBUSTIBLE FLUIDS		SANITARY SEWER	
MARSH AREA		STORM SEWER	
WOODED OR SHRUB AREA		TELEPHONE	
		WATER	
		UTILITY PEDESTAL	
		POWER POLE	
		TELEPHONE POLE	



END PROJECT
 STA. 144+00.00

LAYOUT
 SCALE 0 0.25 MI.

TOTAL NET LENGTH OF CENTERLINE = 0.777 MI.

COORDINATES ON THIS PLAN ARE REFERENCED TO THE WISCONSIN COUNTY COORDINATE SYSTEM (WCCS), DANE COUNTY.

ACCEPTED FOR THE CITY OF MADISON

DATE: _____ CITY ENGINEER

ACCEPTED FOR DANE COUNTY

DATE: _____ ASSISTANT HIGHWAY AND TRANSPORTATION COMMISSIONER

ORIGINAL PLANS PREPARED BY:

SA STRAND ASSOCIATES[®]
 910 WEST WINGRA DRIVE
 MADISON, WISCONSIN 53715
 (608) 251-4843

STATE OF WISCONSIN
 DEPARTMENT OF TRANSPORTATION

PREPARED BY

Surveyor _____ STRAND ASSOCIATES, INC.

Designer _____ STRAND ASSOCIATES, INC.

Management Consultant _____ KL ENGINEERING, INC.

APPROVED FOR THE DEPARTMENT

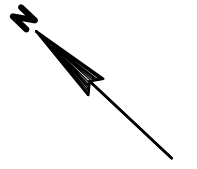
DATE: _____ (Management Consultant Signature)

E

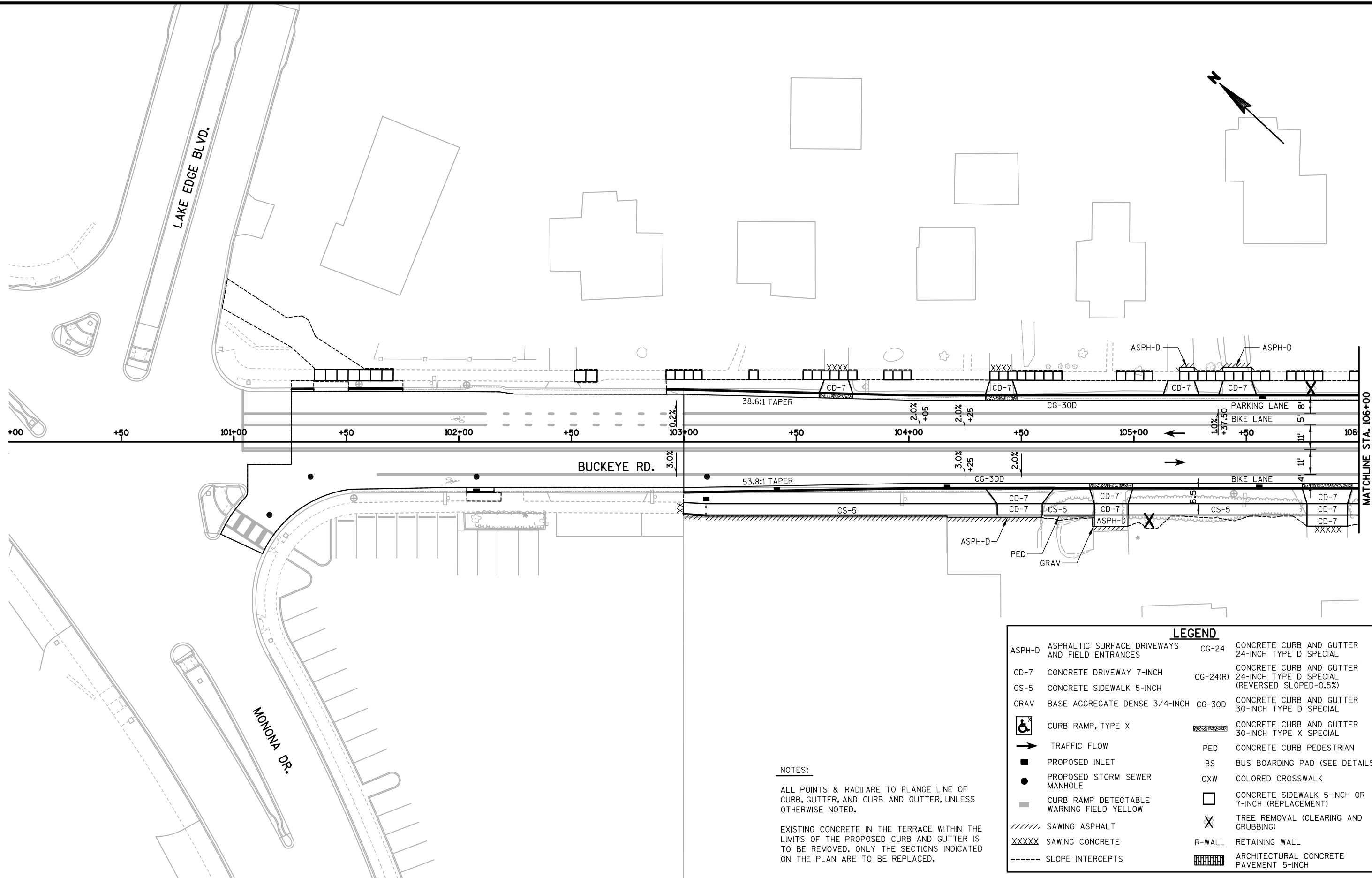
ID: 5992-09-42 IS FOR WATER MAIN CONSTRUCTION
ID: 5992-09-43 IS FOR SANITARY SEWER CONSTRUCTION

2

2



PROJECT NO: 5992-09-41/42/43	HWY: BUCKEYE ROAD	COUNTY: DANE	PROJECT OVERVIEW	SHEET	E
------------------------------	-------------------	--------------	------------------	-------	---



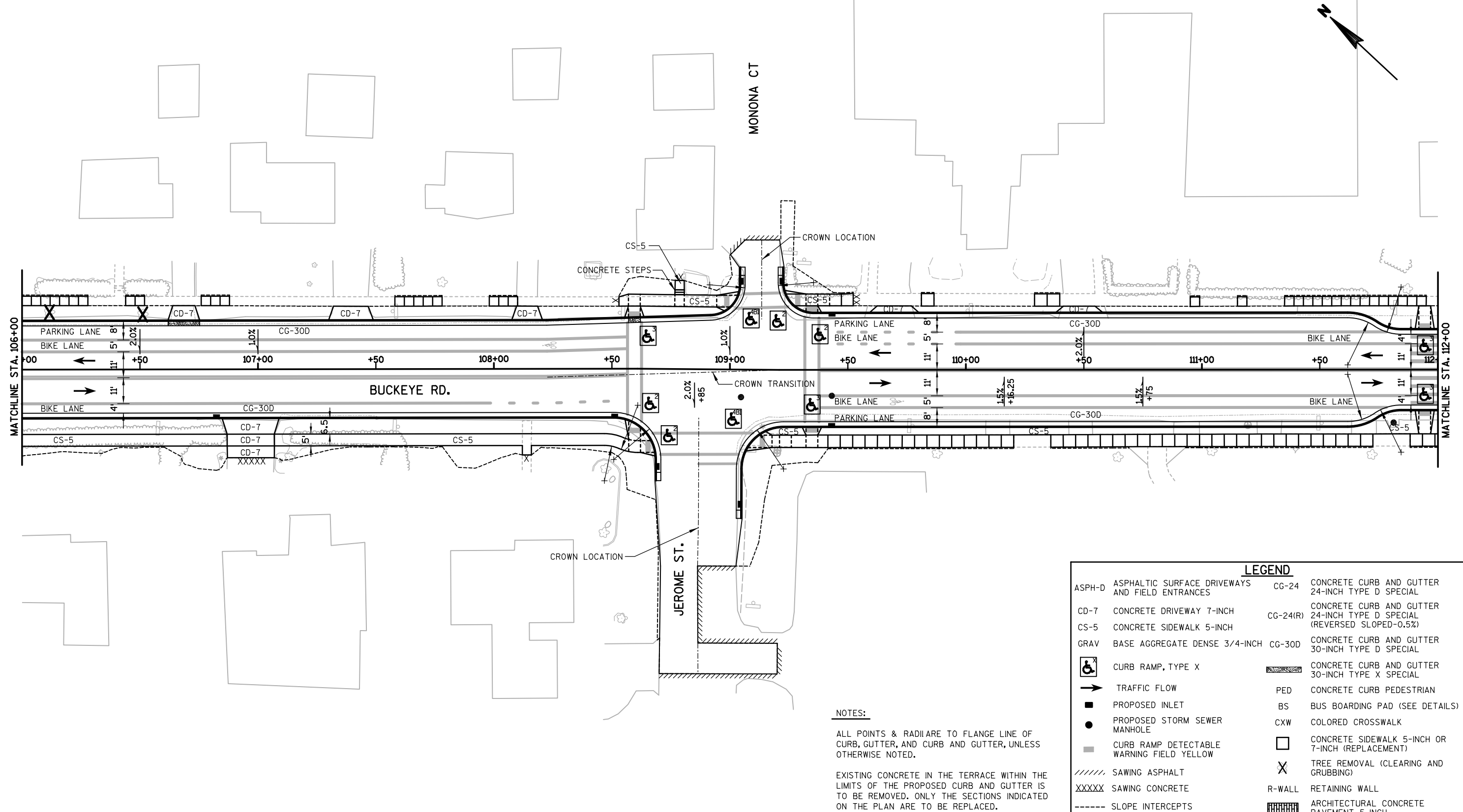
NOTES:

ALL POINTS & RADII ARE TO FLANGE LINE OF CURB, GUTTER, AND CURB AND GUTTER, UNLESS OTHERWISE NOTED.

EXISTING CONCRETE IN THE TERRACE WITHIN THE LIMITS OF THE PROPOSED CURB AND GUTTER IS TO BE REMOVED. ONLY THE SECTIONS INDICATED ON THE PLAN ARE TO BE REPLACED.

LEGEND

ASPH-D ASPHALTIC SURFACE DRIVEWAYS AND FIELD ENTRANCES	CG-24 CONCRETE CURB AND GUTTER 24-INCH TYPE D SPECIAL
CD-7 CONCRETE DRIVEWAY 7-INCH	CG-24(R) CONCRETE CURB AND GUTTER 24-INCH TYPE D SPECIAL (REVERSED SLOPED-0.5%)
CS-5 CONCRETE SIDEWALK 5-INCH	CG-30D CONCRETE CURB AND GUTTER 30-INCH TYPE D SPECIAL
GRAV BASE AGGREGATE DENSE 3/4-INCH	CONCRETE CURB AND GUTTER 30-INCH TYPE X SPECIAL
CURB RAMP, TYPE X	PED CONCRETE CURB PEDESTRIAN
TRAFFIC FLOW	BS BUS BOARDING PAD (SEE DETAILS)
PROPOSED INLET	CXW COLORED CROSSWALK
PROPOSED STORM SEWER MANHOLE	CONCRETE SIDEWALK 5-INCH OR 7-INCH (REPLACEMENT)
CURB RAMP DETECTABLE WARNING FIELD YELLOW	X TREE REMOVAL (CLEARING AND GRUBBING)
SAWING ASPHALT	R-WALL RETAINING WALL
SAWING CONCRETE	ARCHITECTURAL CONCRETE PAVEMENT 5-INCH
SLOPE INTERCEPTS	

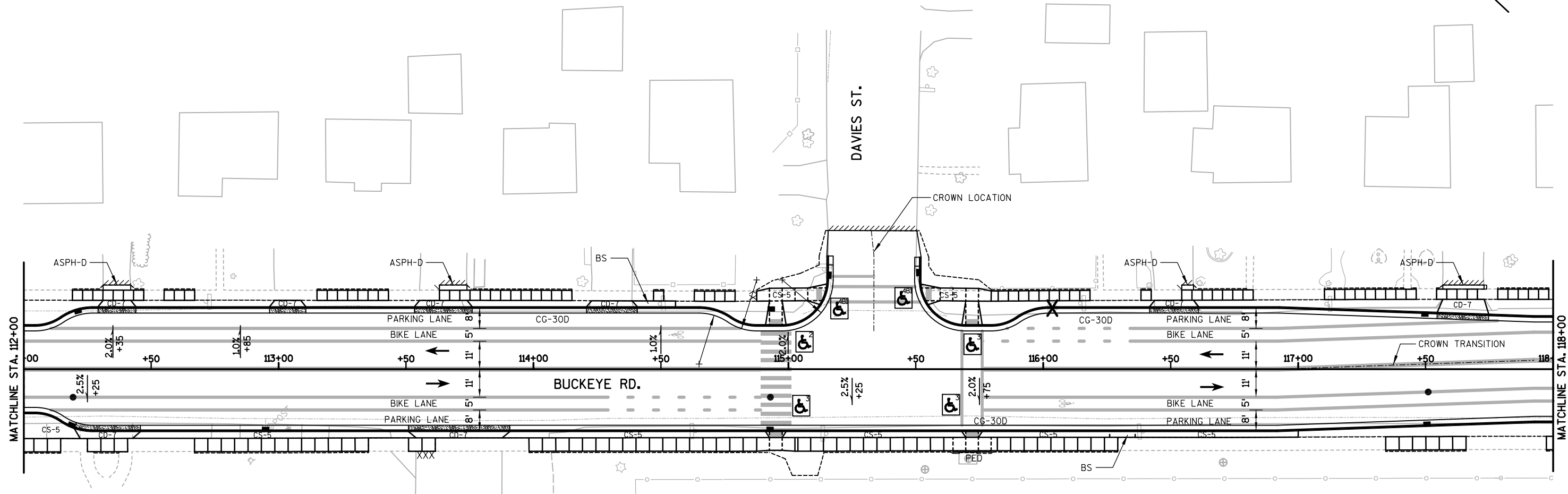


NOTES:

ALL POINTS & RADII ARE TO FLANGE LINE OF CURB, GUTTER, AND CURB AND GUTTER, UNLESS OTHERWISE NOTED.

EXISTING CONCRETE IN THE TERRACE WITHIN THE LIMITS OF THE PROPOSED CURB AND GUTTER IS TO BE REMOVED. ONLY THE SECTIONS INDICATED ON THE PLAN ARE TO BE REPLACED.

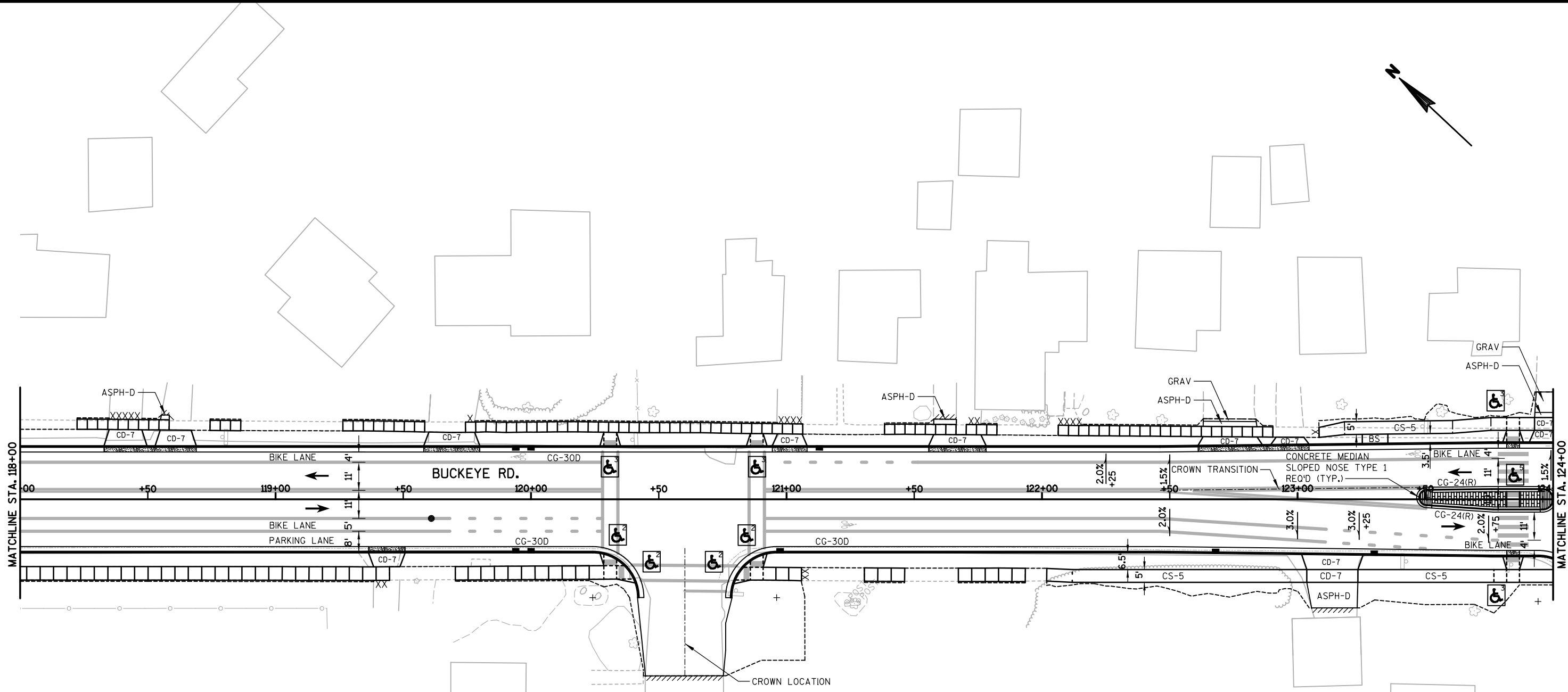
LEGEND			
ASPH-D	ASPHALTIC SURFACE DRIVEWAYS AND FIELD ENTRANCES	CG-24	CONCRETE CURB AND GUTTER 24-INCH TYPE D SPECIAL
CD-7	CONCRETE DRIVEWAY 7-INCH	CG-24(R)	CONCRETE CURB AND GUTTER 24-INCH TYPE D SPECIAL (REVERSED SLOPED-0.5%)
CS-5	CONCRETE SIDEWALK 5-INCH	CG-30D	CONCRETE CURB AND GUTTER 30-INCH TYPE D SPECIAL
GRAV	BASE AGGREGATE DENSE 3/4-INCH	CG-30D	CONCRETE CURB AND GUTTER 30-INCH TYPE X SPECIAL
	CURB RAMP, TYPE X		CONCRETE CURB PEDESTRIAN
	TRAFFIC FLOW	BS	BUS BOARDING PAD (SEE DETAILS)
	PROPOSED INLET	CXW	COLORLED CROSSWALK
	PROPOSED STORM SEWER MANHOLE		CONCRETE SIDEWALK 5-INCH OR 7-INCH (REPLACEMENT)
	CURB RAMP DETECTABLE WARNING FIELD YELLOW		TREE REMOVAL (CLEARING AND GRUBBING)
	SAWING ASPHALT	R-WALL	RETAINING WALL
	SAWING CONCRETE		ARCHITECTURAL CONCRETE PAVEMENT 5-INCH
	SLOPE INTERCEPTS		



LEGEND

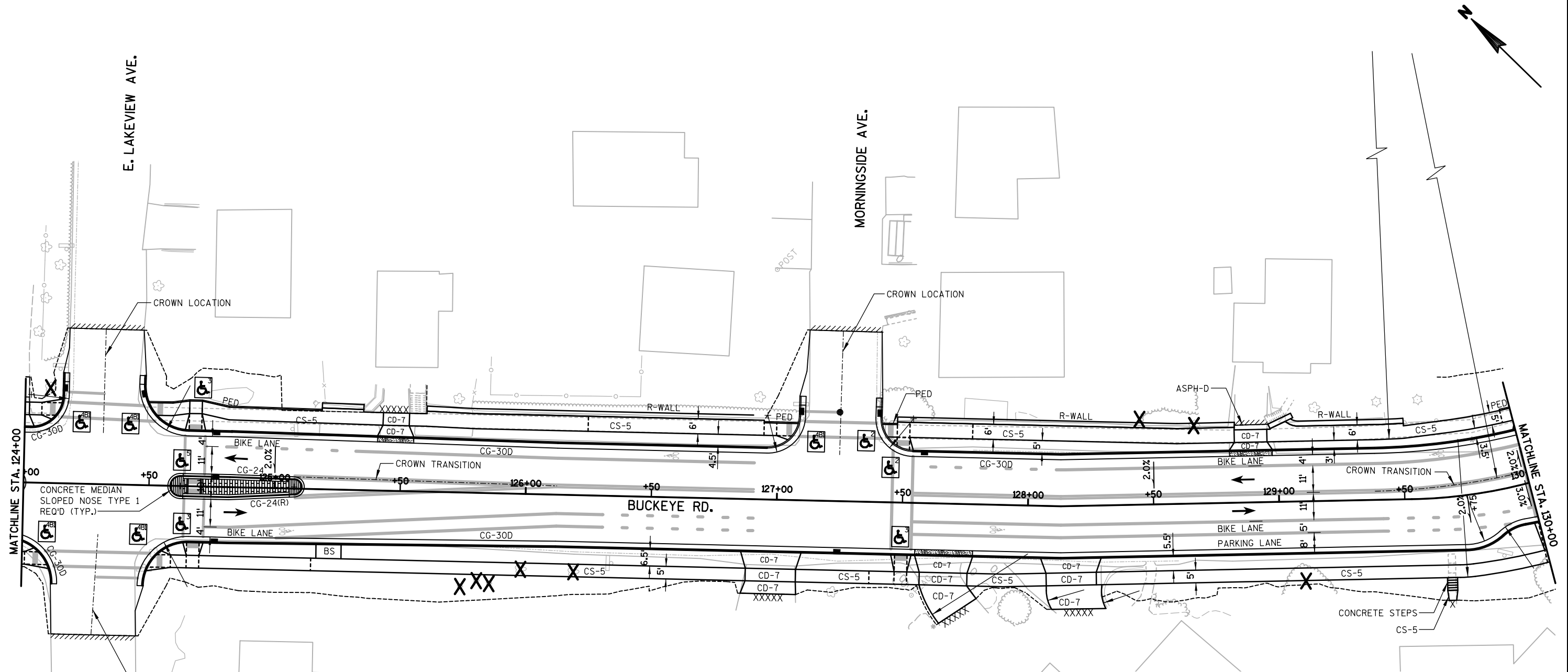
ASPH-D	ASPHALTIC SURFACE DRIVEWAYS AND FIELD ENTRANCES	CG-24	CONCRETE CURB AND GUTTER 24-INCH TYPE D SPECIAL
CD-7	CONCRETE DRIVEWAY 7-INCH	CG-24(R)	CONCRETE CURB AND GUTTER 24-INCH TYPE D SPECIAL (REVERSED SLOPED-0.5%)
CS-5	CONCRETE SIDEWALK 5-INCH	CG-30D	CONCRETE CURB AND GUTTER 30-INCH TYPE D SPECIAL
GRAV	BASE AGGREGATE DENSE 3/4-INCH	CG-30D	CONCRETE CURB AND GUTTER 30-INCH TYPE X SPECIAL
	CURB RAMP, TYPE X	PED	CONCRETE CURB PEDESTRIAN
	TRAFFIC FLOW	BS	BUS BOARDING PAD (SEE DETAILS)
	PROPOSED INLET	CXW	COLORLED CROSSWALK
	PROPOSED STORM SEWER MANHOLE		CONCRETE SIDEWALK 5-INCH OR 7-INCH (REPLACEMENT)
	CURB RAMP DETECTABLE WARNING FIELD YELLOW		TREE REMOVAL (CLEARING AND GRUBBING)
	SAWING ASPHALT	R-WALL	RETAINING WALL
	SAWING CONCRETE		ARCHITECTURAL CONCRETE PAVEMENT 5-INCH
	SLOPE INTERCEPTS		

NOTES:
 ALL POINTS & RADIARE TO FLANGE LINE OF CURB, GUTTER, AND CURB AND GUTTER, UNLESS OTHERWISE NOTED.
 EXISTING CONCRETE IN THE TERRACE WITHIN THE LIMITS OF THE PROPOSED CURB AND GUTTER IS TO BE REMOVED. ONLY THE SECTIONS INDICATED ON THE PLAN ARE TO BE REPLACED.



NOTES:
 ALL POINTS & RADII ARE TO FLANGE LINE OF CURB, GUTTER, AND CURB AND GUTTER, UNLESS OTHERWISE NOTED.
 EXISTING CONCRETE IN THE TERRACE WITHIN THE LIMITS OF THE PROPOSED CURB AND GUTTER IS TO BE REMOVED. ONLY THE SECTIONS INDICATED ON THE PLAN ARE TO BE REPLACED.

LEGEND	
ASPH-D	ASPHALTIC SURFACE DRIVEWAYS AND FIELD ENTRANCES
CD-7	CONCRETE DRIVEWAY 7-INCH
CS-5	CONCRETE SIDEWALK 5-INCH
GRAV	BASE AGGREGATE DENSE 3/4-INCH
	CURB RAMP, TYPE X
	TRAFFIC FLOW
	PROPOSED INLET
	PROPOSED STORM SEWER MANHOLE
	CURB RAMP DETECTABLE WARNING FIELD YELLOW
	SAWING ASPHALT
	SAWING CONCRETE
	SLOPE INTERCEPTS
CG-24	CONCRETE CURB AND GUTTER 24-INCH TYPE D SPECIAL
CG-24(R)	CONCRETE CURB AND GUTTER 24-INCH TYPE D SPECIAL (REVERSED SLOPED-0.5%)
CG-30D	CONCRETE CURB AND GUTTER 30-INCH TYPE D SPECIAL
	CONCRETE CURB AND GUTTER 30-INCH TYPE X SPECIAL
PED	CONCRETE CURB PEDESTRIAN
BS	BUS BOARDING PAD (SEE DETAILS)
CXW	COLORLED CROSSWALK
	CONCRETE SIDEWALK 5-INCH OR 7-INCH (REPLACEMENT)
X	TREE REMOVAL (CLEARING AND GRUBBING)
R-WALL	RETAINING WALL
	ARCHITECTURAL CONCRETE PAVEMENT 5-INCH

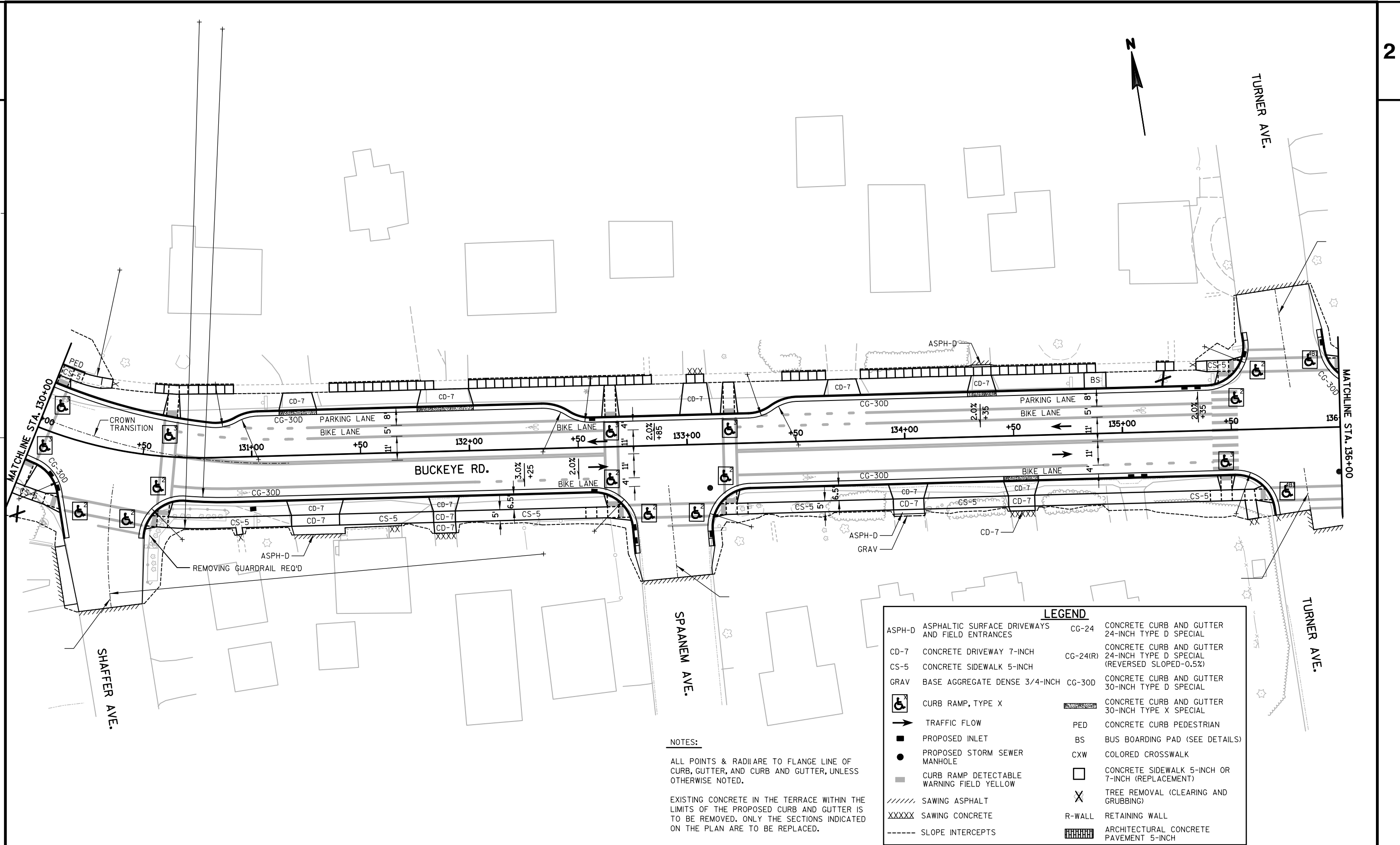


NOTES:

ALL POINTS & RADII ARE TO FLANGE LINE OF CURB, GUTTER, AND CURB AND GUTTER, UNLESS OTHERWISE NOTED.

EXISTING CONCRETE IN THE TERRACE WITHIN THE LIMITS OF THE PROPOSED CURB AND GUTTER IS TO BE REMOVED. ONLY THE SECTIONS INDICATED ON THE PLAN ARE TO BE REPLACED.

LEGEND	
ASPH-D	ASPHALTIC SURFACE DRIVEWAYS AND FIELD ENTRANCES
CD-7	CONCRETE DRIVEWAY 7-INCH
CS-5	CONCRETE SIDEWALK 5-INCH
GRAV	BASE AGGREGATE DENSE 3/4-INCH
	CURB RAMP, TYPE X
	TRAFFIC FLOW
	PROPOSED INLET
	PROPOSED STORM SEWER MANHOLE
	CURB RAMP DETECTABLE WARNING FIELD YELLOW
	SAWING ASPHALT
	SAWING CONCRETE
	SLOPE INTERCEPTS
CG-24	CONCRETE CURB AND GUTTER 24-INCH TYPE D SPECIAL
CG-24(R)	CONCRETE CURB AND GUTTER 24-INCH TYPE D SPECIAL (REVERSED SLOPED-0.5%)
CG-30D	CONCRETE CURB AND GUTTER 30-INCH TYPE D SPECIAL
	CONCRETE CURB AND GUTTER 30-INCH TYPE X SPECIAL
PED	CONCRETE CURB PEDESTRIAN
BS	BUS BOARDING PAD (SEE DETAILS)
CXW	COLORLED CROSSWALK
	CONCRETE SIDEWALK 5-INCH OR 7-INCH (REPLACEMENT)
	TREE REMOVAL (CLEARING AND GRUBBING)
R-WALL	RETAINING WALL
	ARCHITECTURAL CONCRETE PAVEMENT 5-INCH

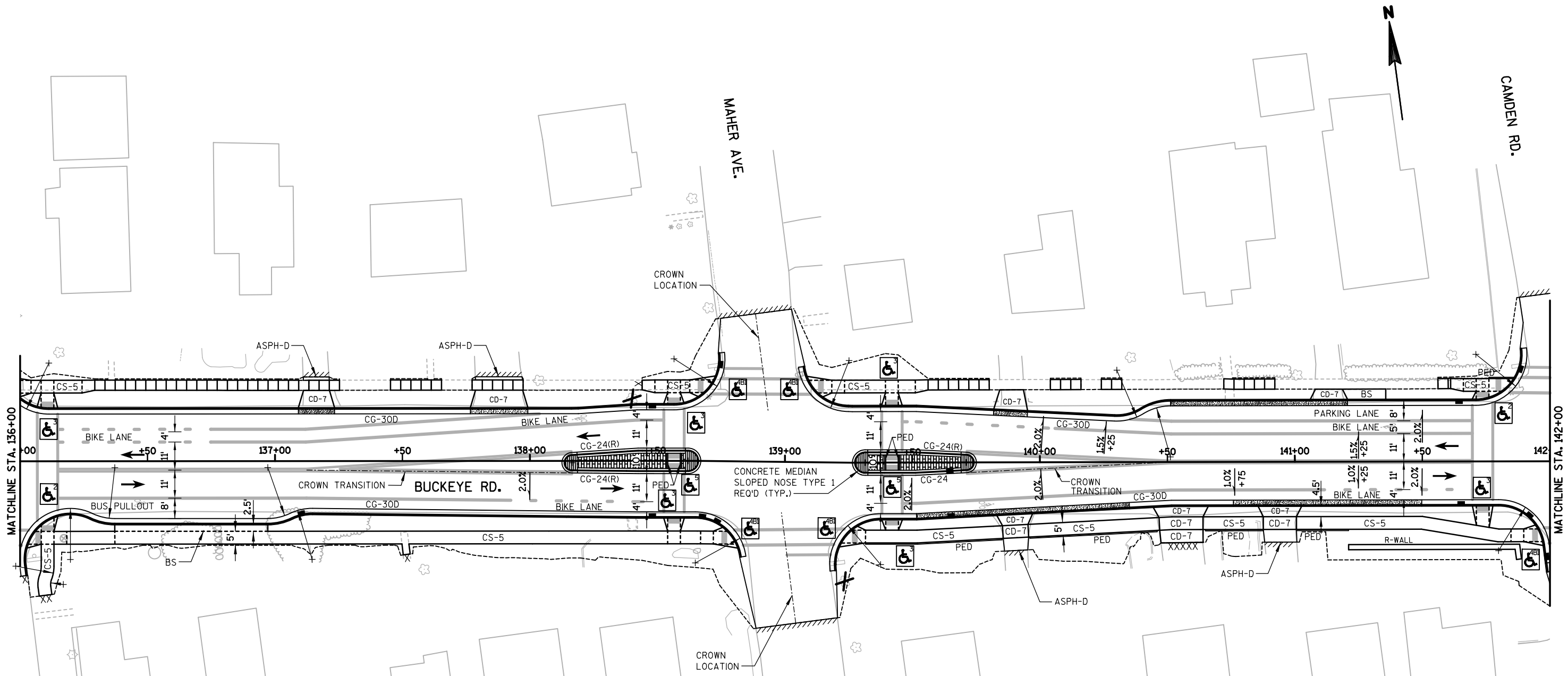


NOTES:

ALL POINTS & RADII ARE TO FLANGE LINE OF CURB, GUTTER, AND CURB AND GUTTER, UNLESS OTHERWISE NOTED.

EXISTING CONCRETE IN THE TERRACE WITHIN THE LIMITS OF THE PROPOSED CURB AND GUTTER IS TO BE REMOVED. ONLY THE SECTIONS INDICATED ON THE PLAN ARE TO BE REPLACED.

LEGEND	
ASPH-D	ASPHALTIC SURFACE DRIVEWAYS AND FIELD ENTRANCES
CD-7	CONCRETE DRIVEWAY 7-INCH
CS-5	CONCRETE SIDEWALK 5-INCH
GRAV	BASE AGGREGATE DENSE 3/4-INCH
	CURB RAMP, TYPE X
	TRAFFIC FLOW
	PROPOSED INLET
	PROPOSED STORM SEWER MANHOLE
	CURB RAMP DETECTABLE WARNING FIELD YELLOW
	SAWING ASPHALT
	SAWING CONCRETE
	SLOPE INTERCEPTS
CG-24	CONCRETE CURB AND GUTTER 24-INCH TYPE D SPECIAL
CG-24(R)	CONCRETE CURB AND GUTTER 24-INCH TYPE D SPECIAL (REVERSED SLOPED-0.5%)
CG-30D	CONCRETE CURB AND GUTTER 30-INCH TYPE D SPECIAL
	CONCRETE CURB AND GUTTER 30-INCH TYPE X SPECIAL
PED	CONCRETE CURB PEDESTRIAN
BS	BUS BOARDING PAD (SEE DETAILS)
CXW	COLORLED CROSSWALK
	CONCRETE SIDEWALK 5-INCH OR 7-INCH (REPLACEMENT)
	TREE REMOVAL (CLEARING AND GRUBBING)
R-WALL	RETAINING WALL
	ARCHITECTURAL CONCRETE PAVEMENT 5-INCH

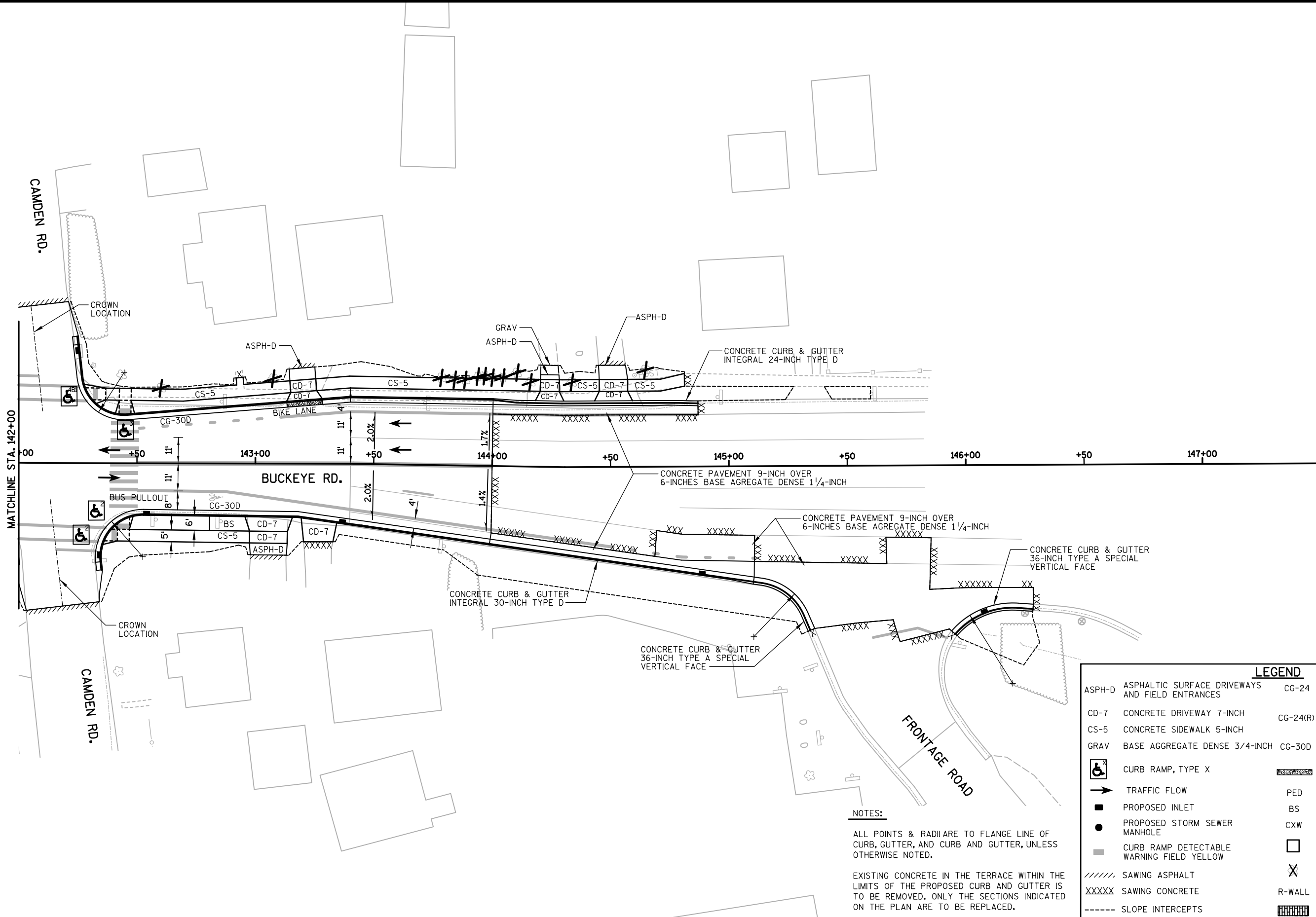


NOTES:

ALL POINTS & RADII ARE TO FLANGE LINE OF CURB, GUTTER, AND CURB AND GUTTER, UNLESS OTHERWISE NOTED.

EXISTING CONCRETE IN THE TERRACE WITHIN THE LIMITS OF THE PROPOSED CURB AND GUTTER IS TO BE REMOVED. ONLY THE SECTIONS INDICATED ON THE PLAN ARE TO BE REPLACED.

LEGEND	
ASPH-D	ASPHALTIC SURFACE DRIVEWAYS AND FIELD ENTRANCES
CD-7	CONCRETE DRIVEWAY 7-INCH
CS-5	CONCRETE SIDEWALK 5-INCH
GRAV	BASE AGGREGATE DENSE 3/4-INCH
	CURB RAMP, TYPE X
	TRAFFIC FLOW
	PROPOSED INLET
	PROPOSED STORM SEWER MANHOLE
	CURB RAMP DETECTABLE WARNING FIELD YELLOW
	SAWING ASPHALT
	SAWING CONCRETE
	SLOPE INTERCEPTS
CG-24	CONCRETE CURB AND GUTTER 24-INCH TYPE D SPECIAL
CG-24(R)	CONCRETE CURB AND GUTTER 24-INCH TYPE D SPECIAL (REVERSED SLOPED-0.5%)
CG-30D	CONCRETE CURB AND GUTTER 30-INCH TYPE D SPECIAL
	CONCRETE CURB AND GUTTER 30-INCH TYPE X SPECIAL
PED	CONCRETE CURB PEDESTRIAN
BS	BUS BOARDING PAD (SEE DETAILS)
CXW	COLORLED CROSSWALK
	CONCRETE SIDEWALK 5-INCH OR 7-INCH (REPLACEMENT)
	TREE REMOVAL (CLEARING AND GRUBBING)
R-WALL	RETAINING WALL
	ARCHITECTURAL CONCRETE PAVEMENT 5-INCH

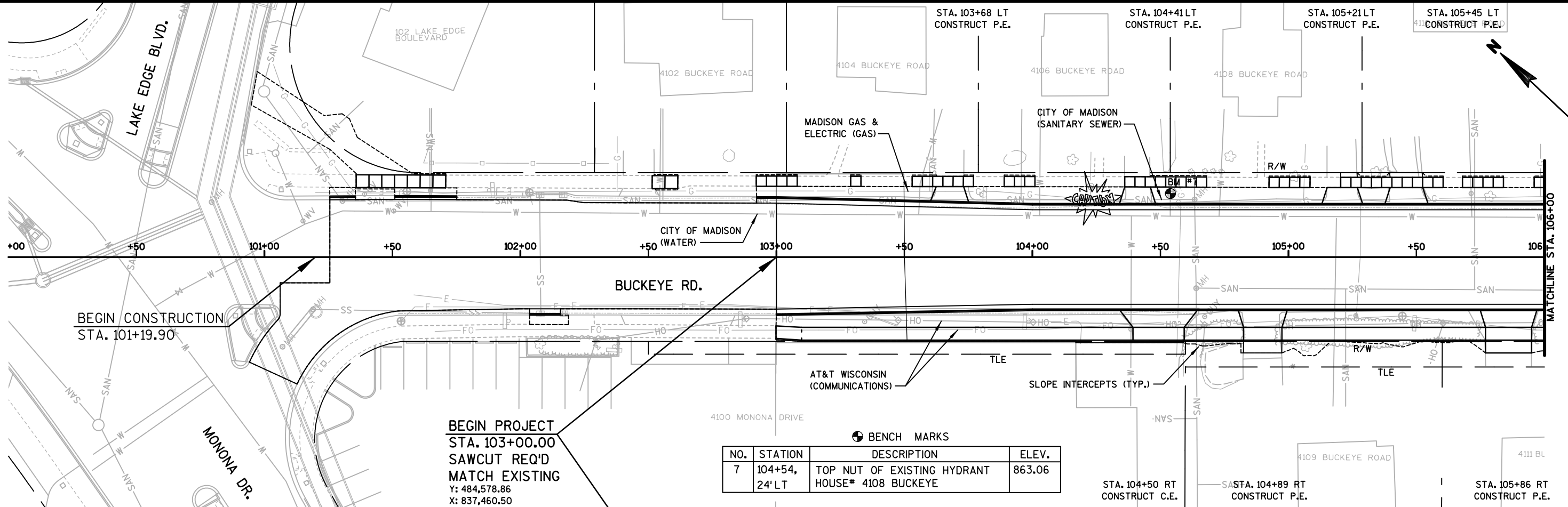


NOTES:

ALL POINTS & RADII ARE TO FLANGE LINE OF CURB, GUTTER, AND CURB AND GUTTER, UNLESS OTHERWISE NOTED.

EXISTING CONCRETE IN THE TERRACE WITHIN THE LIMITS OF THE PROPOSED CURB AND GUTTER IS TO BE REMOVED. ONLY THE SECTIONS INDICATED ON THE PLAN ARE TO BE REPLACED.

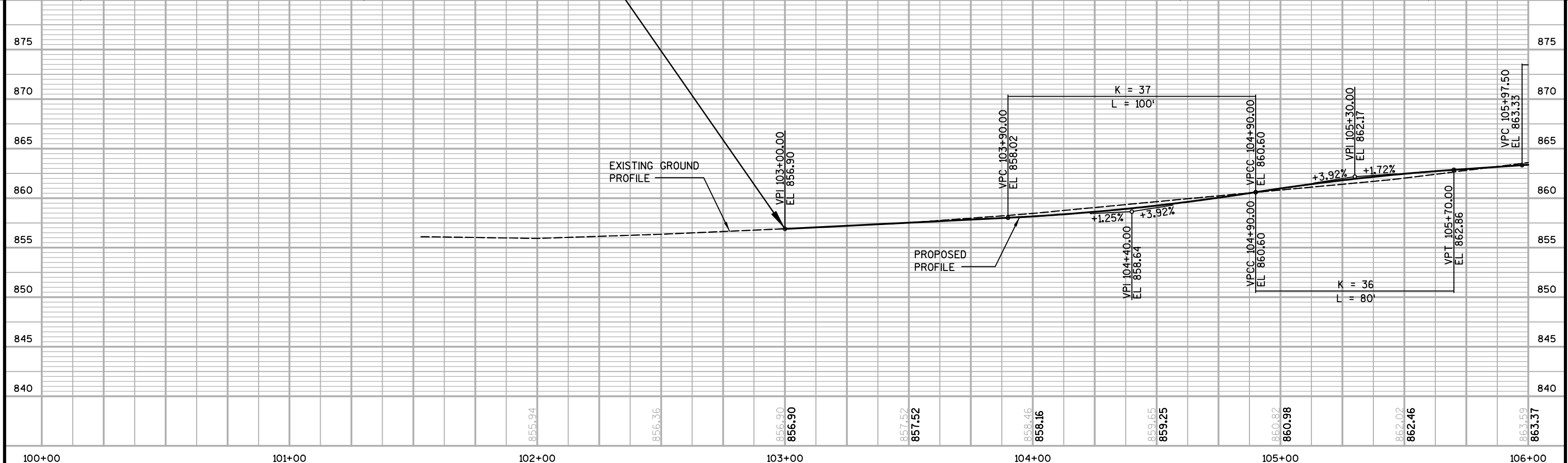
LEGEND	
ASPH-D	ASPHALTIC SURFACE DRIVEWAYS AND FIELD ENTRANCES
CD-7	CONCRETE DRIVEWAY 7-INCH
CS-5	CONCRETE SIDEWALK 5-INCH
GRAV	BASE AGGREGATE DENSE 3/4-INCH
	CURB RAMP, TYPE X
	TRAFFIC FLOW
	PROPOSED INLET
	PROPOSED STORM SEWER MANHOLE
	CURB RAMP DETECTABLE WARNING FIELD YELLOW
	SAWING ASPHALT
	SAWING CONCRETE
	SLOPE INTERCEPTS
CG-24	CONCRETE CURB AND GUTTER 24-INCH TYPE D SPECIAL
CG-24(R)	CONCRETE CURB AND GUTTER 24-INCH TYPE D SPECIAL (REVERSED SLOPED-0.5%)
CG-30D	CONCRETE CURB AND GUTTER 30-INCH TYPE D SPECIAL
	CONCRETE CURB AND GUTTER 30-INCH TYPE X SPECIAL
PED	CONCRETE CURB PEDESTRIAN
BS	BUS BOARDING PAD (SEE DETAILS)
CXW	COLORLED CROSSWALK
	CONCRETE SIDEWALK 5-INCH OR 7-INCH (REPLACEMENT)
	TREE REMOVAL (CLEARING AND GRUBBING)
R-WALL	RETAINING WALL
	ARCHITECTURAL CONCRETE PAVEMENT 5-INCH

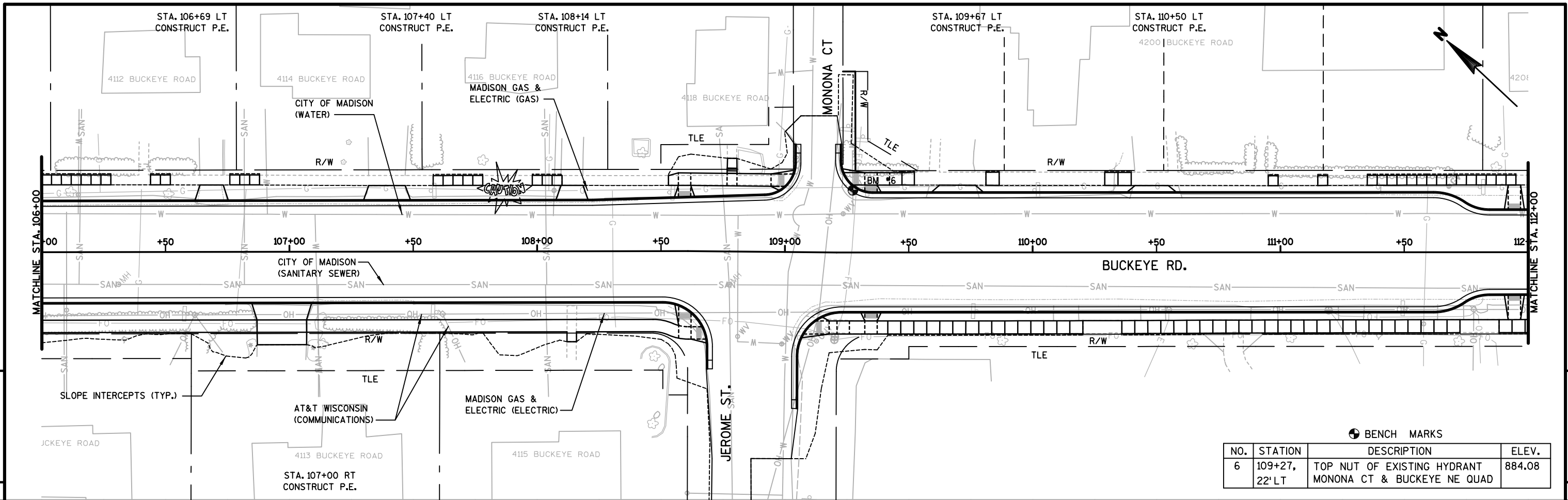


BENCH MARKS

NO.	STATION	DESCRIPTION	ELEV.
7	104+54, 24' LT	TOP NUT OF EXISTING HYDRANT HOUSE# 4108 BUCKEYE	863.06

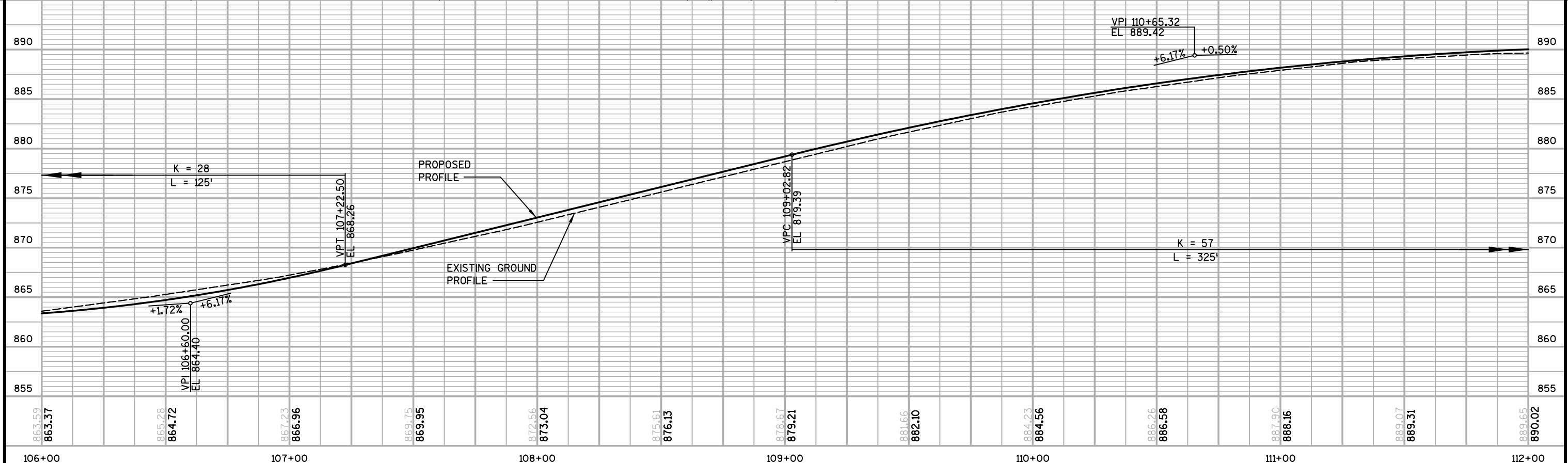
BEGIN PROJECT
STA. 103+00.00
SAWCUT REQ'D
MATCH EXISTING
Y: 484,578.86
X: 837,460.50

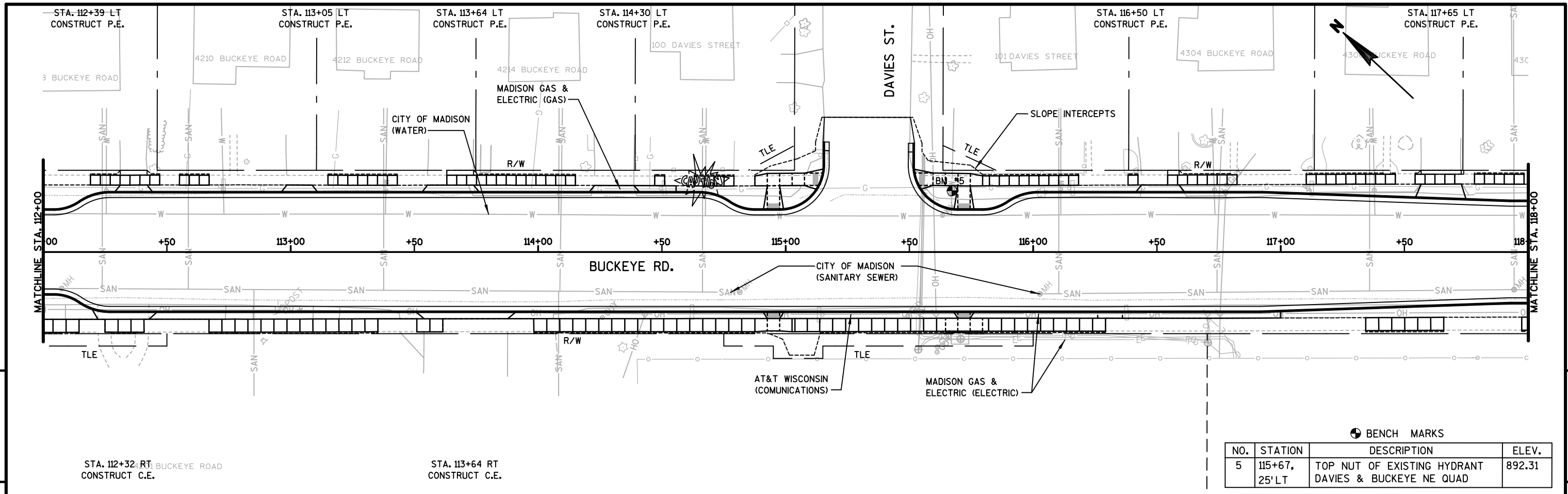




⊕ BENCH MARKS

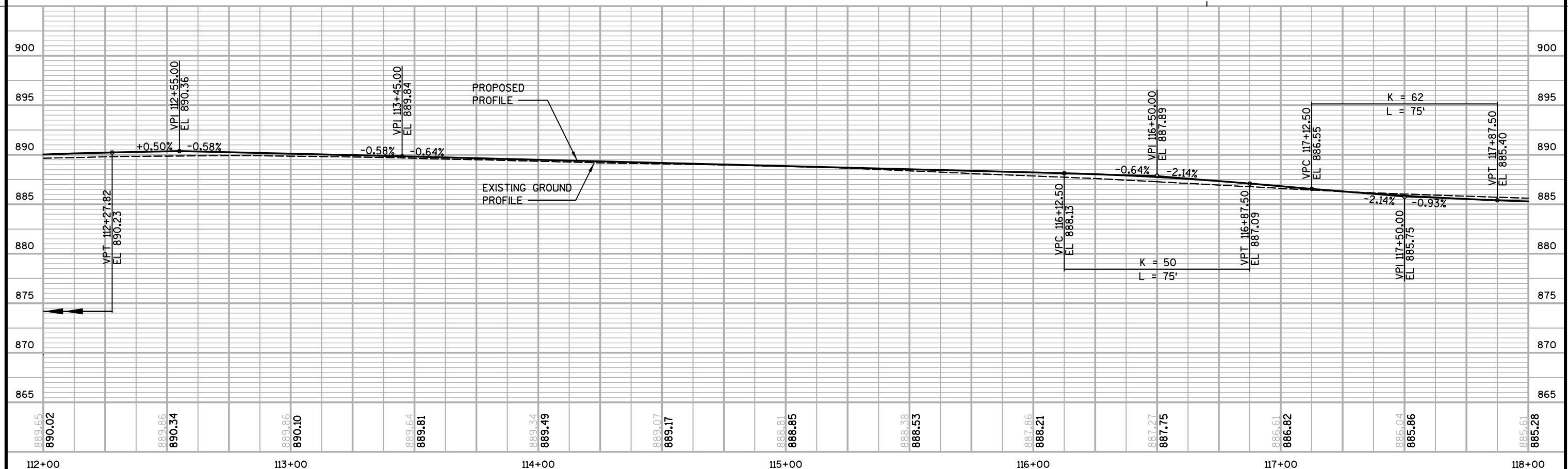
NO.	STATION	DESCRIPTION	ELEV.
6	109+27, 22' LT	TOP NUT OF EXISTING HYDRANT MONONA CT & BUCKEYE NE QUAD	884.08



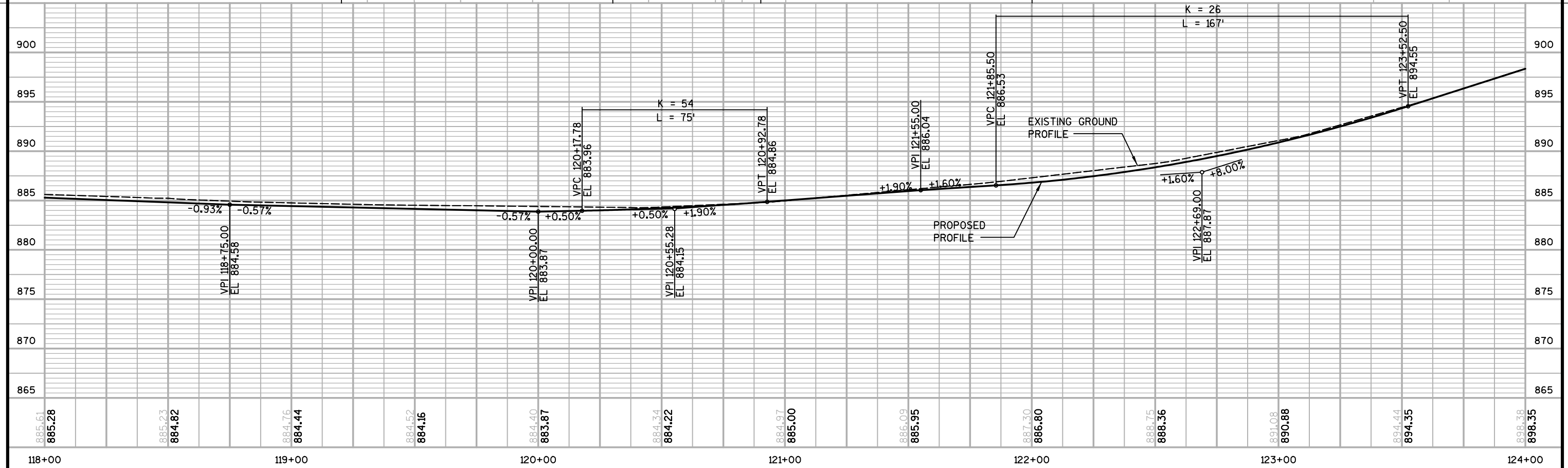
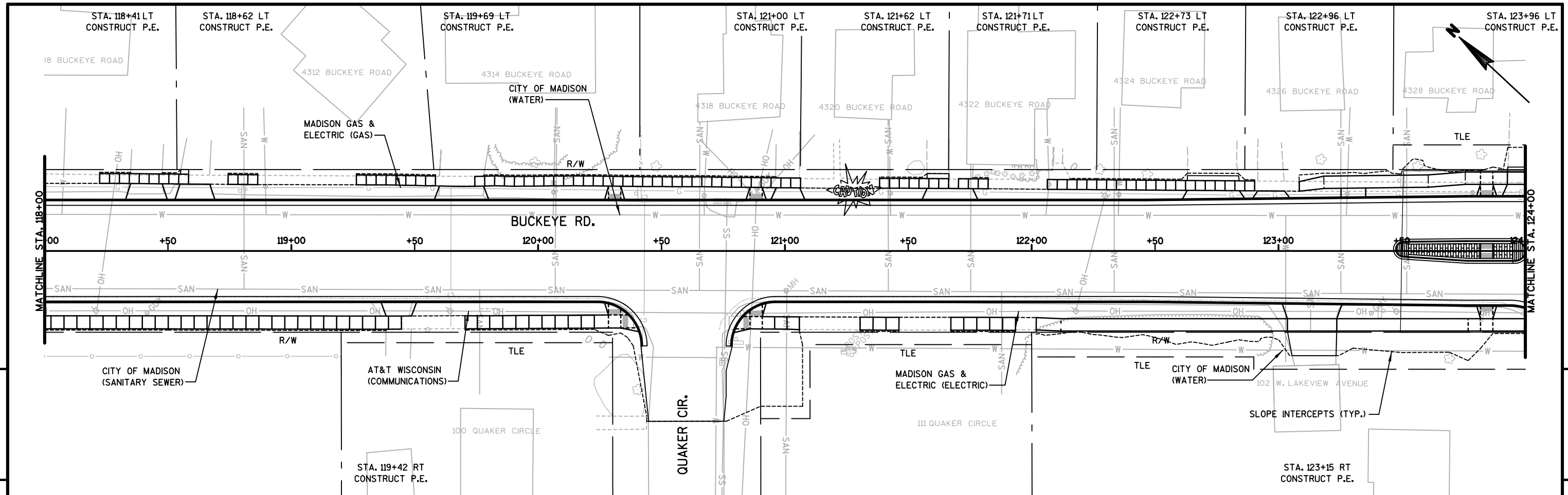


⊕ BENCH MARKS

NO.	STATION	DESCRIPTION	ELEV.
5	115+67, 25' LT	TOP NUT OF EXISTING HYDRANT DAVIES & BUCKEYE NE QUAD	892.31

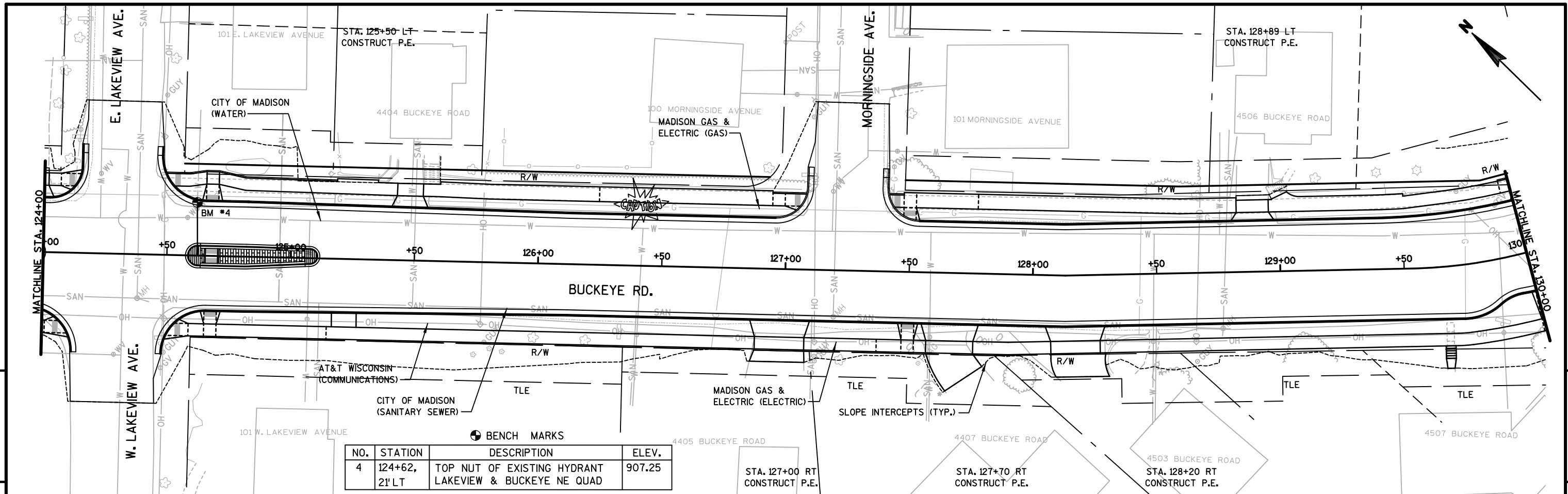


PROJECT NO: 5992-09-41 HWY: BUCKEYE ROAD COUNTY: DANE PLAN AND PROFILE - BUCKEYE ROAD SHEET E

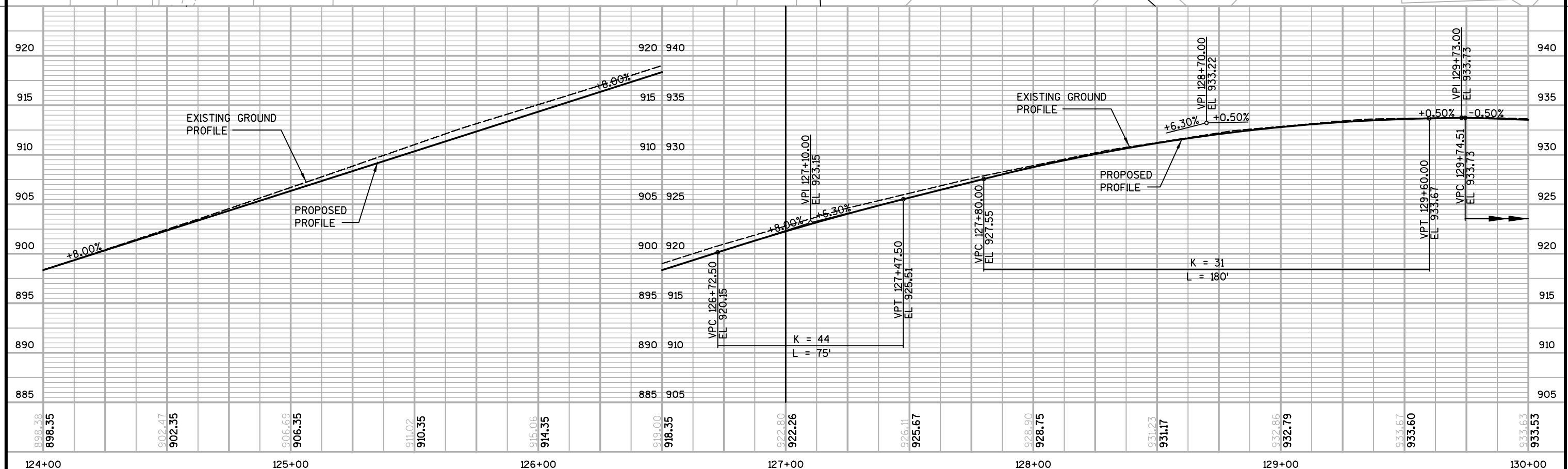


885.61 885.28	885.23 884.82	884.76 884.44	884.52 884.16	884.40 883.87	884.34 884.22	884.97 885.00	886.09 885.95	887.30 886.80	888.75 888.36	891.08 890.88	894.44 894.35	896.38 896.35
118+00		119+00		120+00		121+00		122+00		123+00		124+00

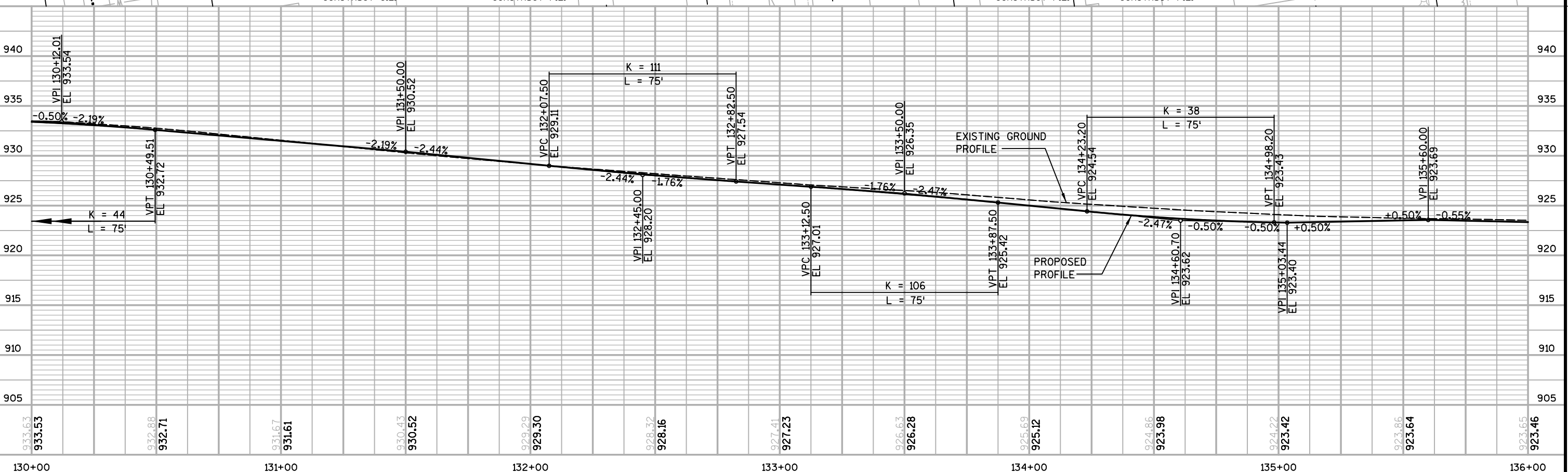
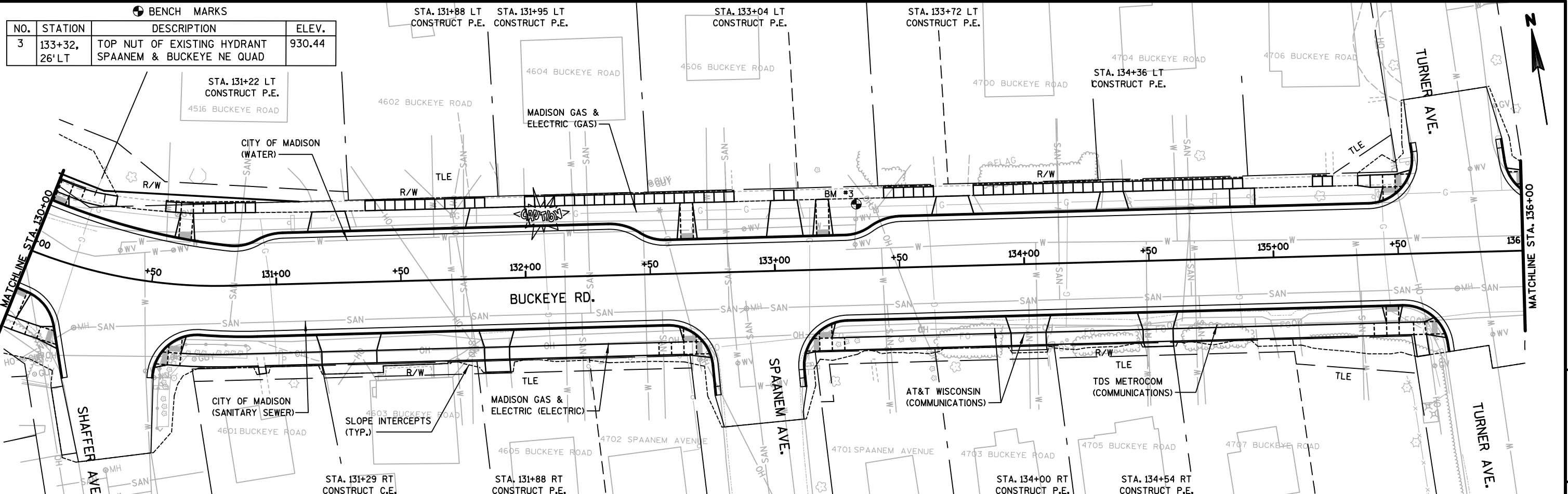
PROJECT NO: 5992-09-41 HWY: BUCKEYE ROAD COUNTY: DANE PLAN AND PROFILE - BUCKEYE ROAD SHEET E



NO.	STATION	DESCRIPTION	ELEV.
4	124+62, 21' LT	TOP NUT OF EXISTING HYDRANT LAKEVIEW & BUCKEYE NE QUAD	907.25

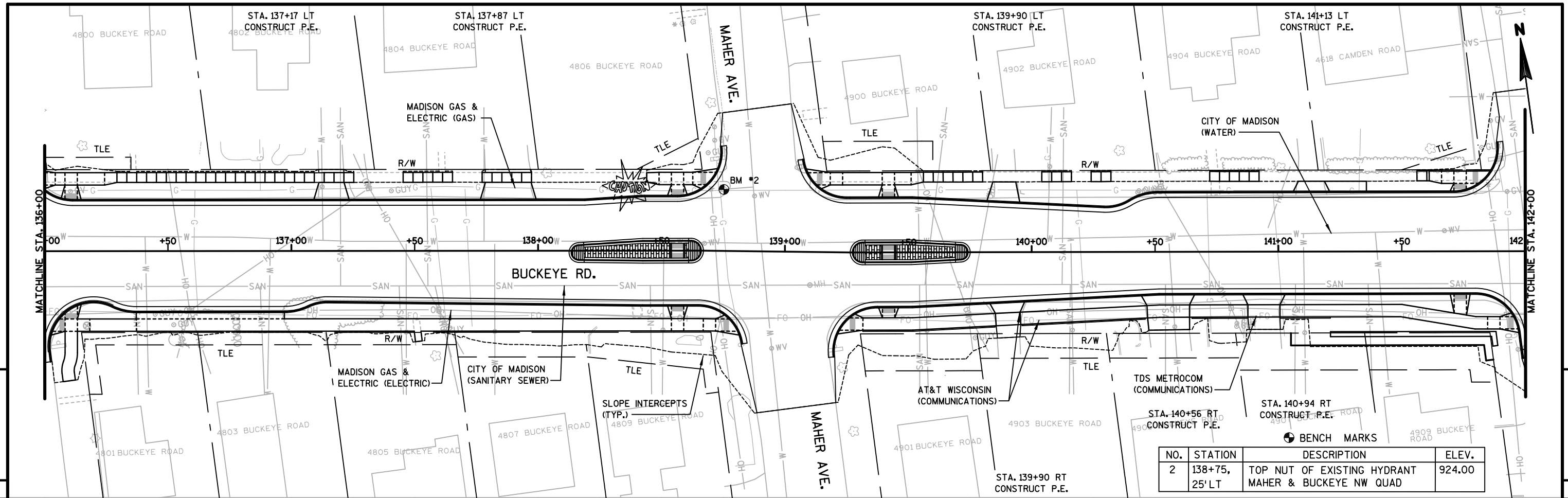


898.38 898.35	902.47 902.35	906.69 906.35	911.02 910.35	915.06 914.35	919.00 918.35	922.80 922.26	926.11 925.67	928.90 928.75	931.23 931.17	932.86 932.79	933.67 933.60	933.63 933.53
124+00	125+00	126+00	127+00	128+00	129+00	130+00						

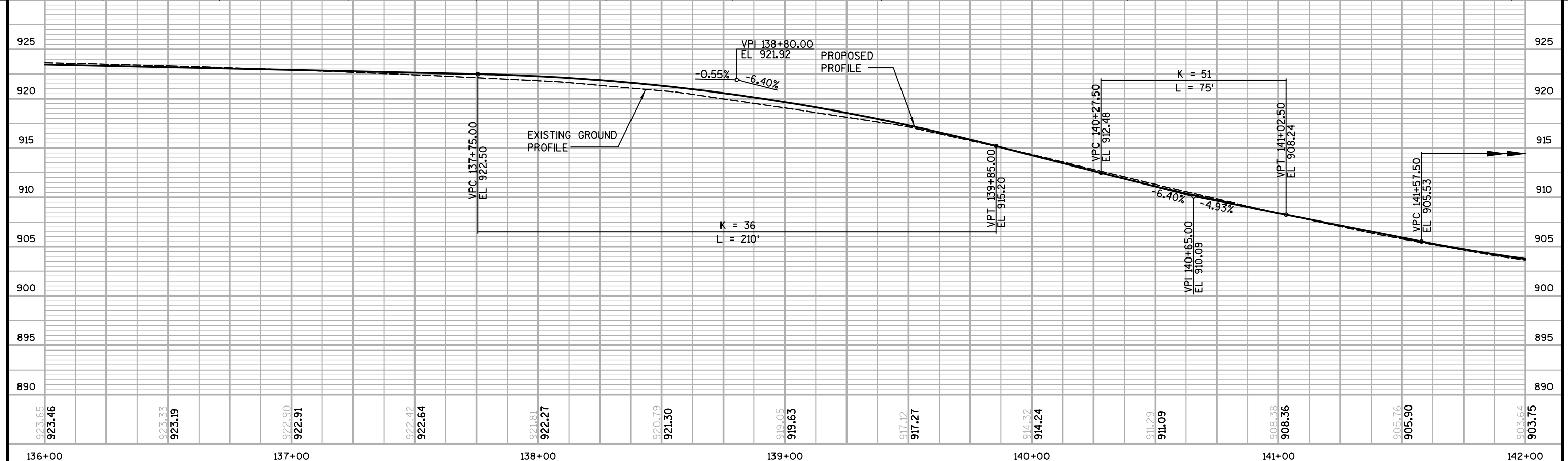


933.63 933.53	932.88 932.71	931.67 931.61	930.43 930.52	929.29 929.30	928.32 928.16	927.41 927.23	926.63 926.28	925.69 925.12	924.86 923.98	924.22 923.42	923.86 923.64	923.65 923.46
130+00	131+00	132+00	133+00	134+00	135+00	136+00						

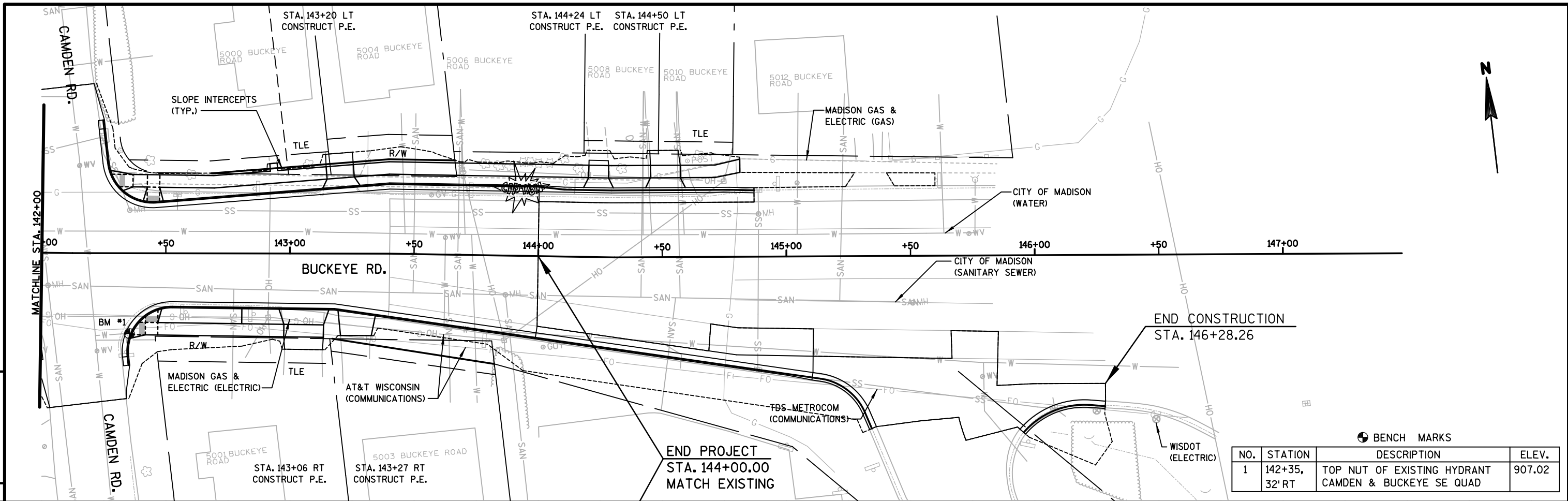
PROJECT NO: 5992-09-41 HWY: BUCKEYE ROAD COUNTY: DANE PLAN AND PROFILE - BUCKEYE ROAD SHEET E



NO.	STATION	DESCRIPTION	ELEV.
2	138+75, 25' LT	TOP NUT OF EXISTING HYDRANT MAHER & BUCKEYE NW QUAD	924.00



923.65 923.46	923.33 923.19	922.90 922.91	922.42 922.64	921.81 922.27	920.79 921.30	919.05 919.63	917.12 917.27	914.32 914.24	911.29 911.09	908.38 908.36	905.76 905.90	903.64 903.75
136+00		137+00		138+00		139+00		140+00		141+00		142+00



BENCH MARKS			
NO.	STATION	DESCRIPTION	ELEV.
1	142+35, 32' RT	TOP NUT OF EXISTING HYDRANT CAMDEN & BUCKEYE SE QUAD	907.02

