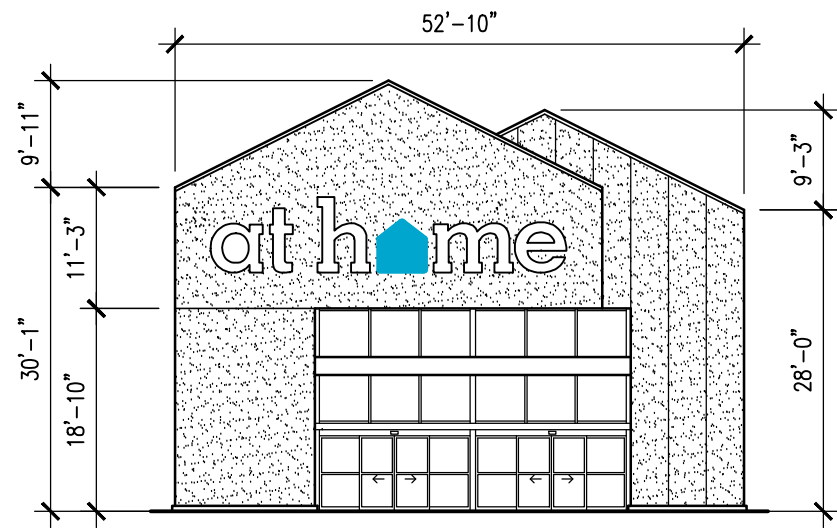
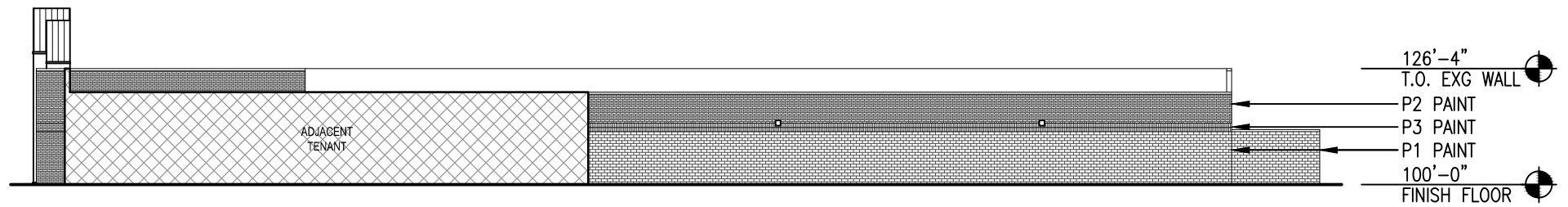


At Home Store #263
 Madison, Wisconsin

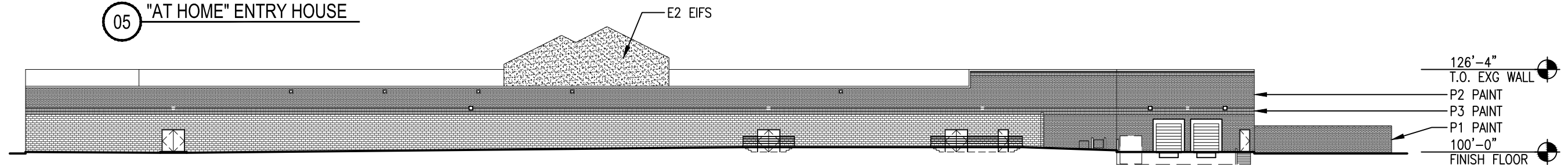
FLOOR PLAN
 SCALE: N.T.S.



05 "AT HOME" ENTRY HOUSE

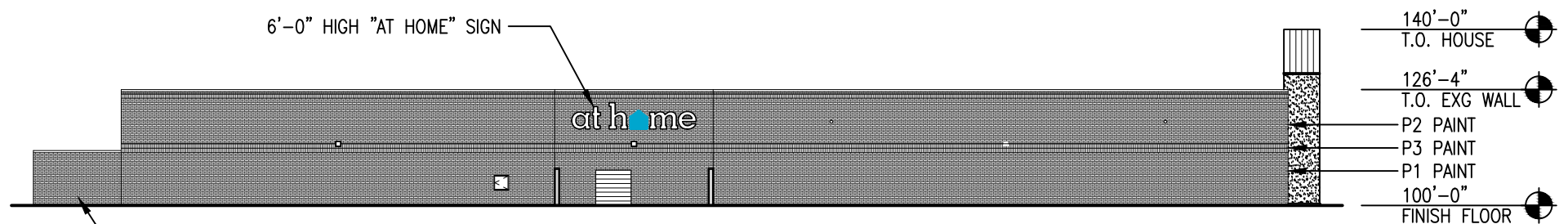


04 EAST ELEVATION

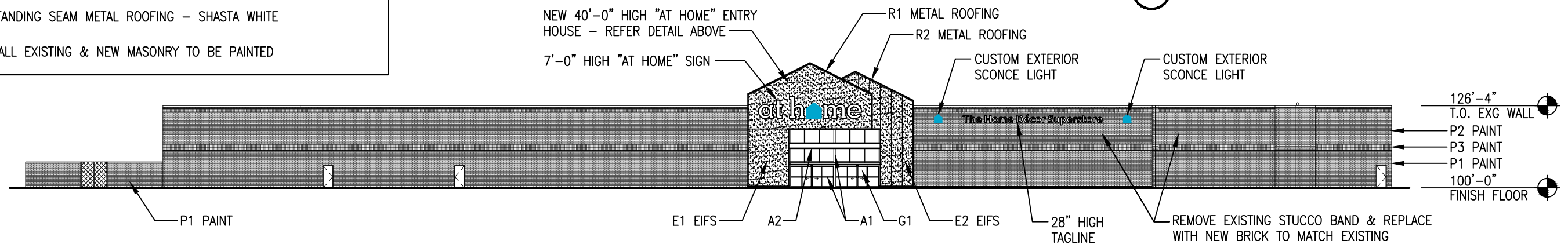


03 NORTH ELEVATION

EXTERIOR MATERIALS SCHEDULE	
A1	ALUMINUM STOREFRONT (CLEAR ANODIZED FINISH)
A2	ALUMINUM CANOPY (CLEAR ANODIZED FINISH)
E1	EIFS - SAND FINISH (COLOR MATCH "AT HOME" DARK GRAY)
E2	EIFS - SAND FINISH (COLOR MATCH "AT HOME" JENISON GRAY)
G1	GLAZING - LOW-E CLEAR, TEMPERED
P1	EXTERIOR PAINT - SW COLOR "AT HOME" DARK GRAY
P2	EXTERIOR PAINT - SW COLOR "AT HOME" JENISON GRAY
P3	EXTERIOR PAINT - SW COLOR 7551 GREEK VILLA
R1	STANDING SEAM METAL ROOFING - ZINC GREY
R2	STANDING SEAM METAL ROOFING - SHASTA WHITE
NOTE: ALL EXISTING & NEW MASONRY TO BE PAINTED	



02 WEST ELEVATION

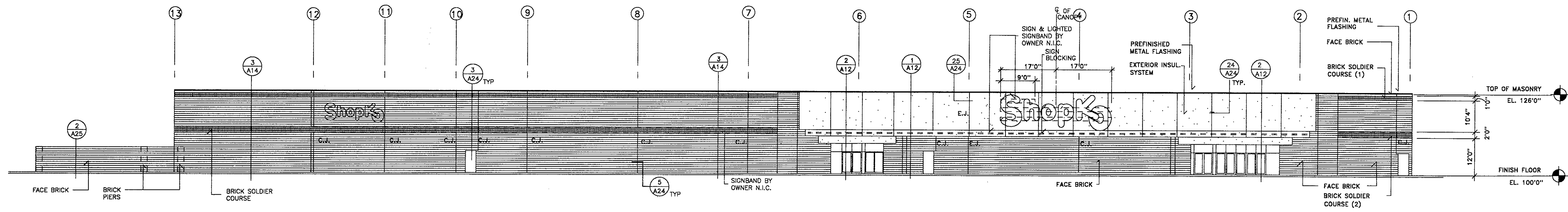
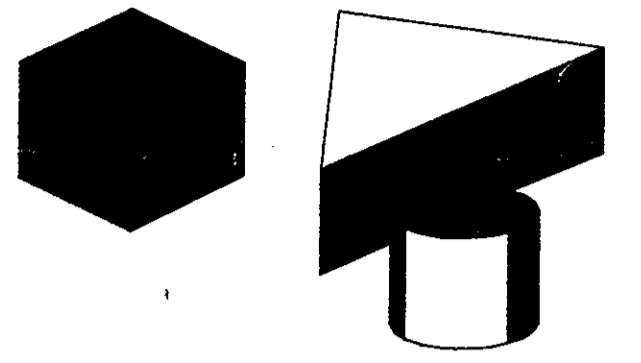


01 SOUTH ELEVATION

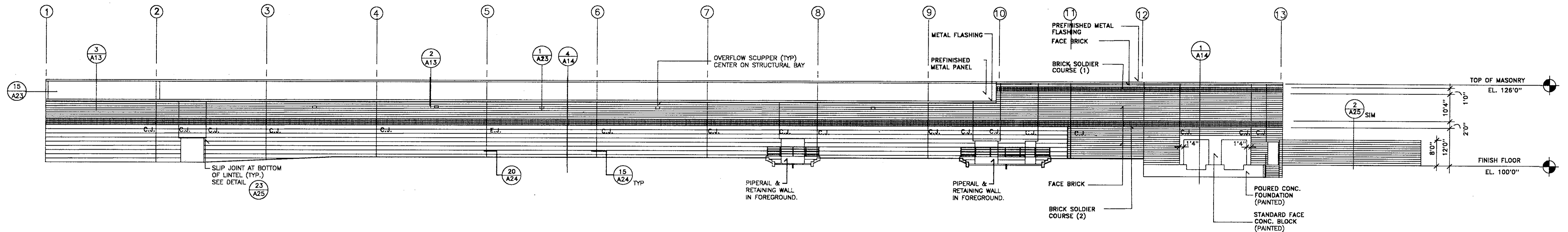
At Home Store #263
Madison, Wisconsin

callaway
architecture

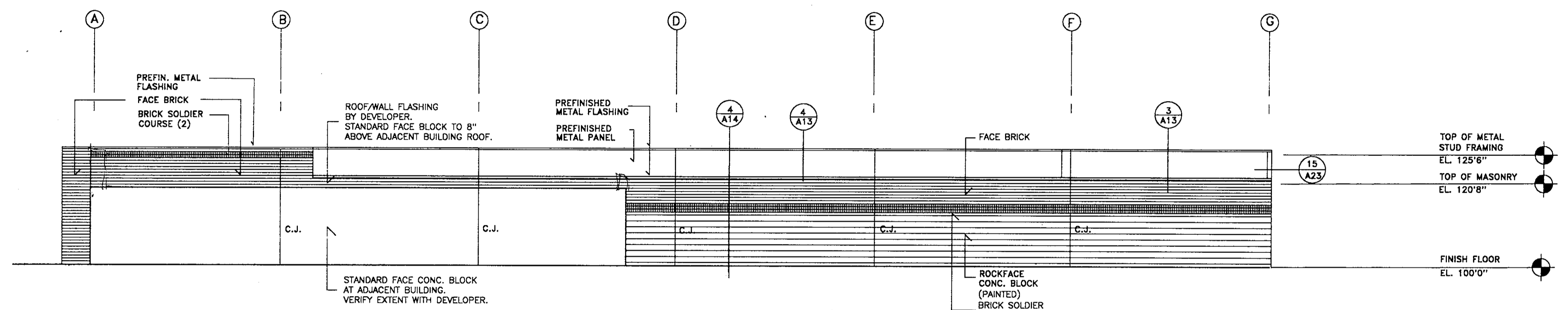
1207 HAMPSHIRE LN, ST# 105, RICHARDSON, TX 75080
PHONE: 214.368.2525 PROJECT#: 19009 DATE: 04.23.19



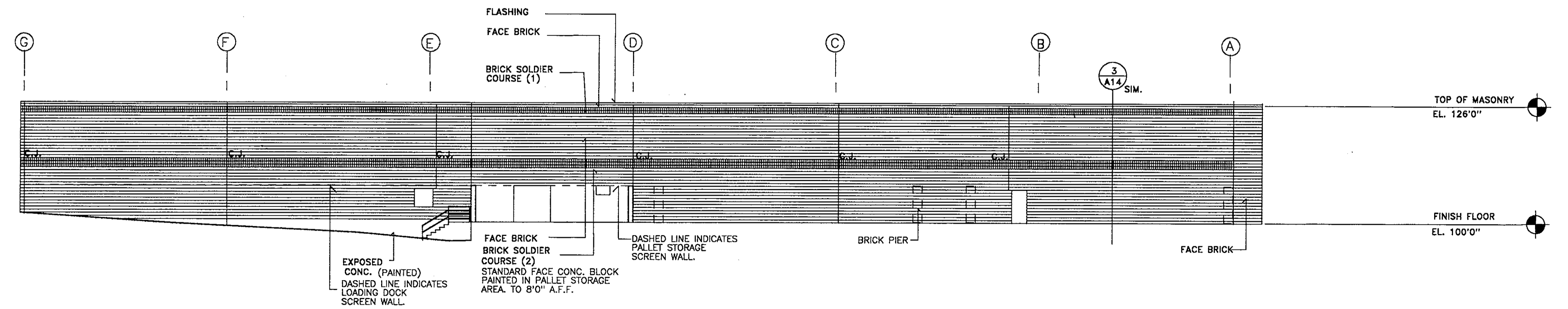
1 FRONT ELEVATION
1/16"=1'-0"



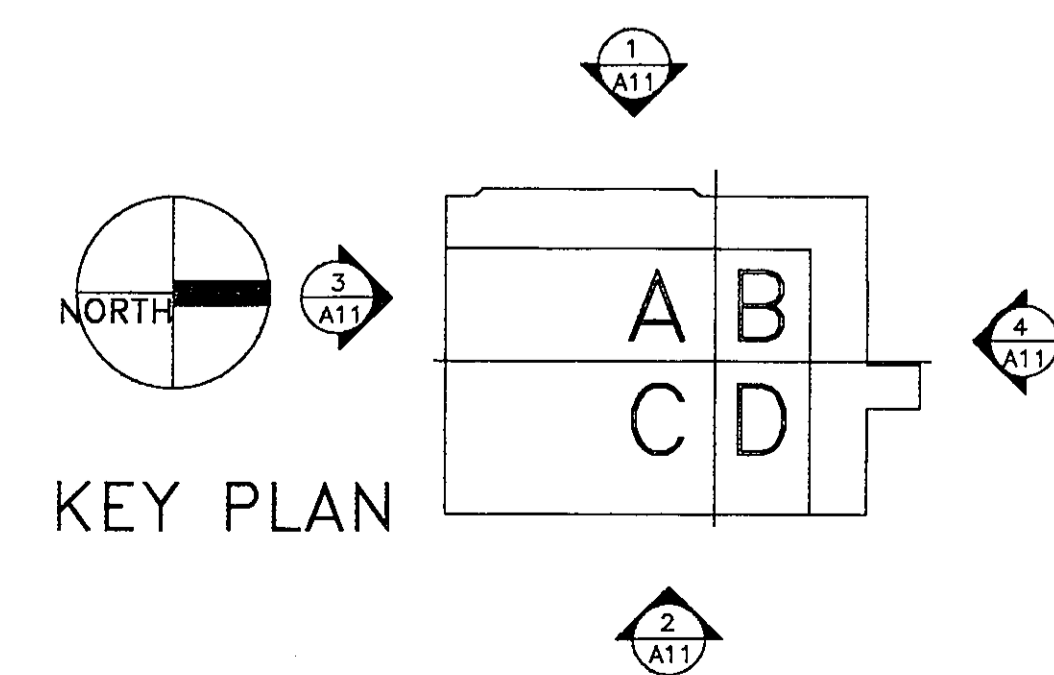
2 BACK ELEVATION
1/16"=1'-0"



3 RIGHT ELEVATION
1/16"=1'-0"



4 LEFT ELEVATION
1/16"=1'-0"



SHOPKO
STORE #
MADISON, WISCONSIN
PROTOTYPE P94

EXTERIOR
ELEVATIONS

1/16"=1'0"

I hereby certify that this plan, specification, or report was prepared by me or under my direct supervision, and that I am a duly registered Architect under the laws of the State of WISCONSIN.

Date 7-16-87 Reg. No. 5373

Signed *[Signature]*

No. Date Revision Description

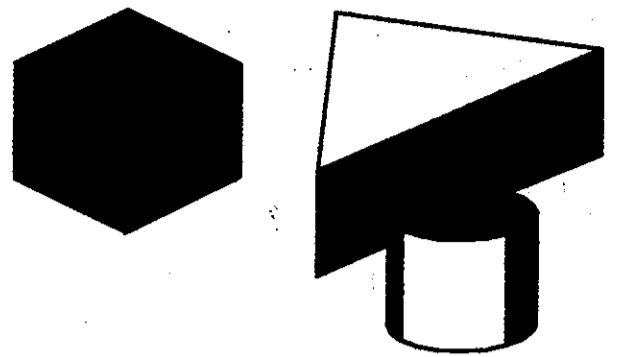
Project No. 87-01-4012-01 Sheet

Date 6-12-87

Drawn by JL

Checked by DFA

A11



SHOPKO
STORE #
MADISON, WISCONSIN
PROTOTYPE P94

LIGHTING
FIRST FLOOR
QUAD A

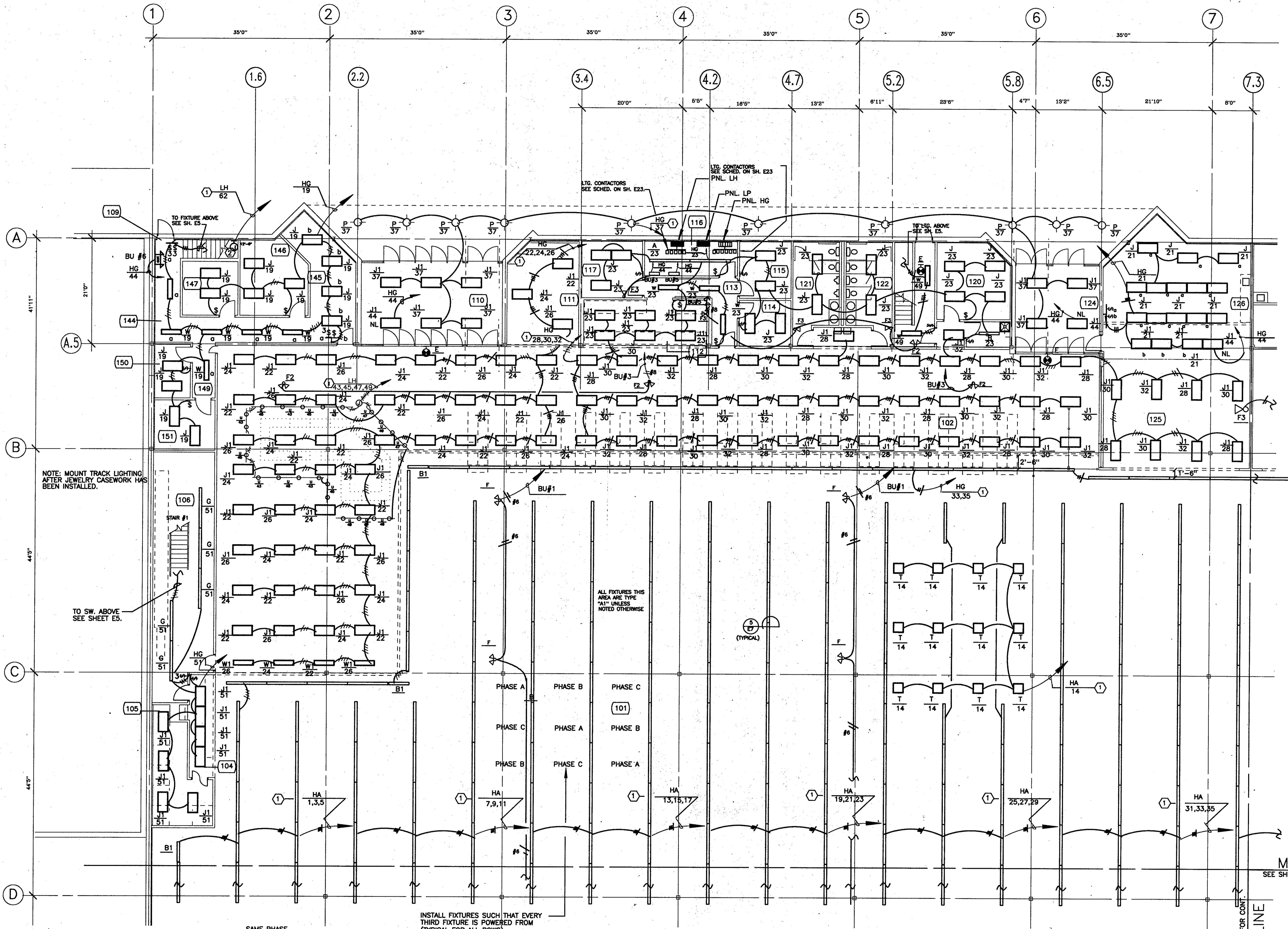
I hereby certify that this plan, specification, or report was prepared by me or under my direct supervision, and that I am a duly registered Engineer under the laws of the State of Wisconsin.
Date 7/16/87
ERDMANN
REG-274 E15474

Signed *[Signature]*

No.	Date	Revision Description

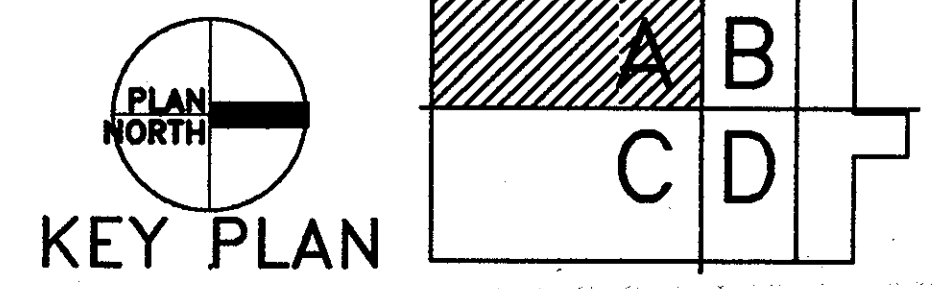
JUL 21 1987

Project No.	87-30	Sheet	E1
Date	6/22/87	Drawn by	RB / TC
Checked by	AE	of	23

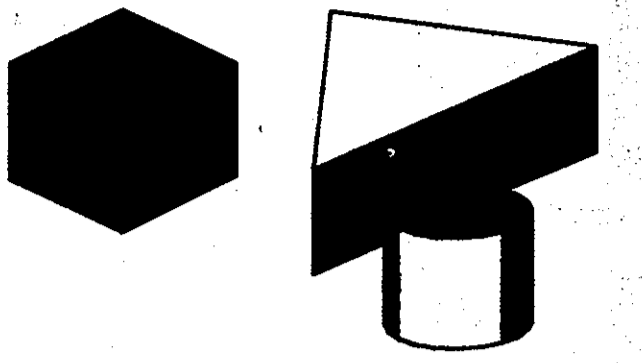


- LIGHTING NOTES**
- CIRCUIT VIA CONTACTOR LOCATED ADJACENT TO PANELBOARD SEE CONTACTOR SCHEDULE ON SHEET E23.
 - J-BOX FOR SIGN BAND. LEAVE 12" EXCESS CONDUCTOR IN J-BOX. EXTENSION OF WIRE AND FINAL CONNECTIONS BY SIGN CONTRACTOR.

1 FIRST FLOOR QUAD A - LIGHTING
E1
1/8" = 1'-0"



BACKGROUND 7/8/87
MERCHANDISING PLOT-BID SET 7/16/87



SHOPKO

STORE #
MADISON, WISCONSIN
PROTOTYPE P94

LIGHTING
FIRST FLOOR
QUAD B

I hereby certify that the design, calculation, or report was prepared by me or under my direct supervision, and that I am a duly registered Engineer under the laws of the State of Wisconsin.
Date 7/16/87
Reg. No. 66248

Signed *Amber Erickson*

No. Date Revision Description

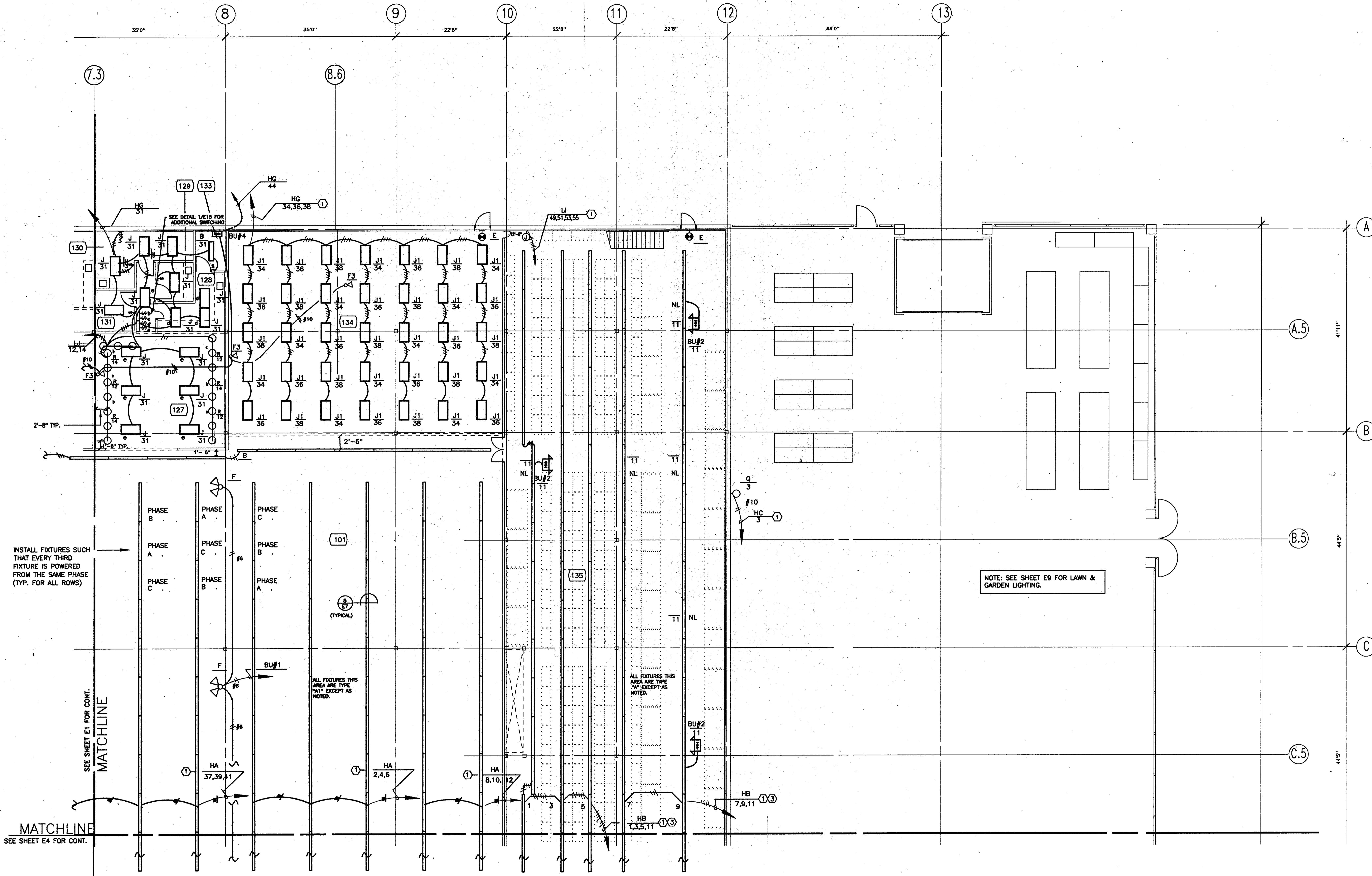
JUL 21 1987

Project No. 87-30 Sheet

Date 6/22/87 E2

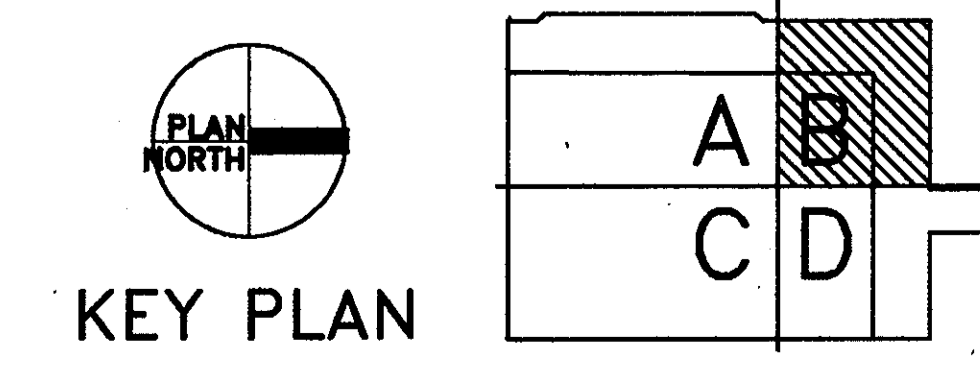
Drawn by RB,TC

Checked by AE of 23

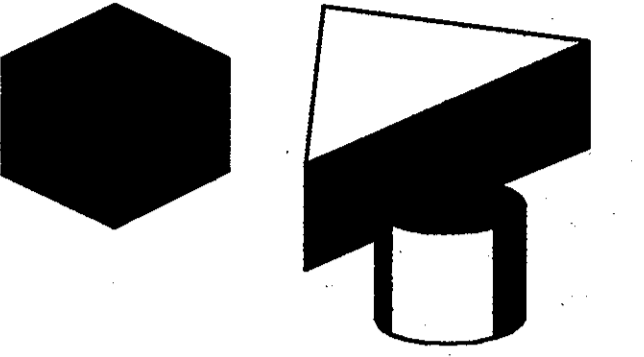


- LIGHTING NOTES
- 1 CIRCUIT VIA CONTACTOR LOCATED ADJACENT TO PANELBOARD. SEE CONTACTOR SCHEDULE ON SHEET E23
 - 2 J-BOX FOR CONNECTION OF STORE SIGN. LEAVE 12" OF WIRE IN BOX. EXTENSION OF WIRING AND FINAL CONNECTIONS BY SIGN CONT.
 - 3 DO NOT CIRCUIT NITE LIGHTING VIA CONTACTORS.

1 FIRST FLOOR QUAD B - LIGHTING
E2 SCALE: 1/8" = 1'-0"



BACKGROUND MERCHANDISING PLOT-BID SET 7/16/87



SHOPKO
STORE #
MADISON, WISCONSIN
PROTOTYPE P94

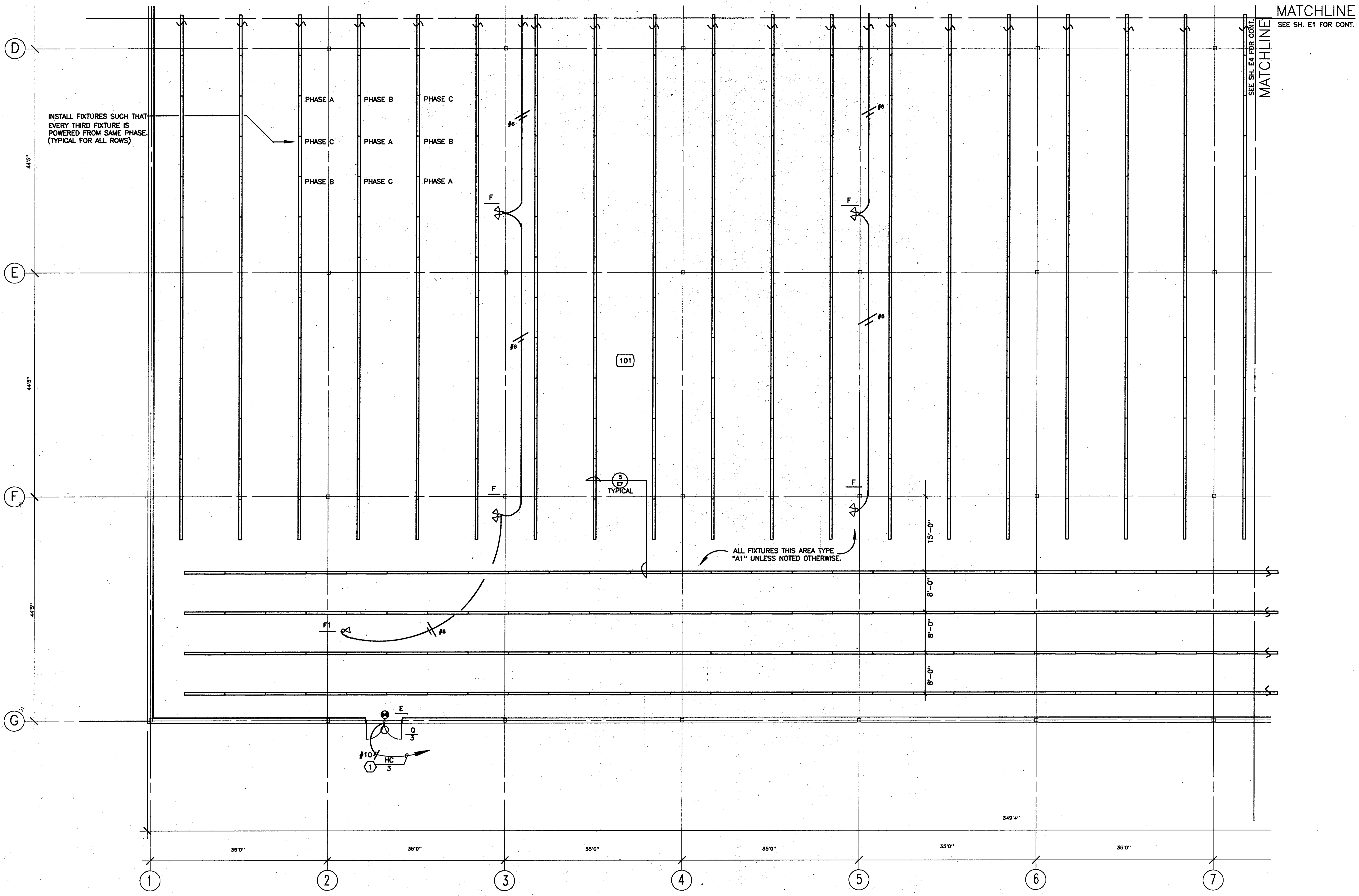
LIGHTING
FIRST FLOOR
QUAD C

I hereby certify that this plan, specification, or report was prepared by me or under my direct supervision, and that I am a duly registered Engineer under the laws of the State of Wisconsin.
ER. MANN
Date 7/16/87 Reg. No., Ed 572

Signed *Er. Mann*

No.	Date	Revision Description

Project No. 87-30 Sheet
Date 6/22/87 E3
Drawn by RB-3
Checked by AE of 23

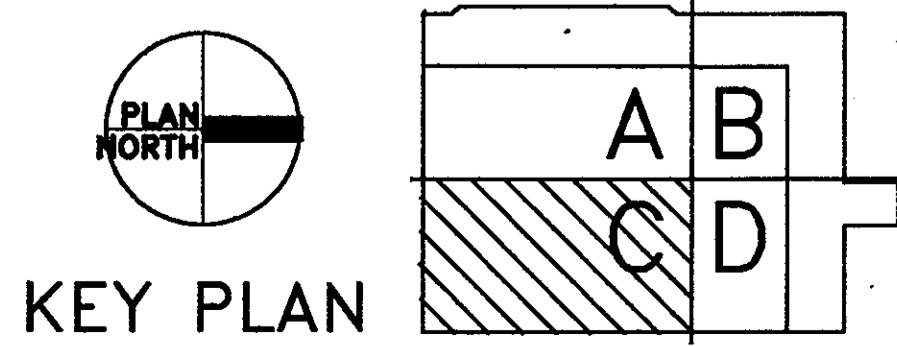


BACKGROUND 5/2/87
MERCHANDISING 5/1/87
PLOT (BID SET) 5/8/87

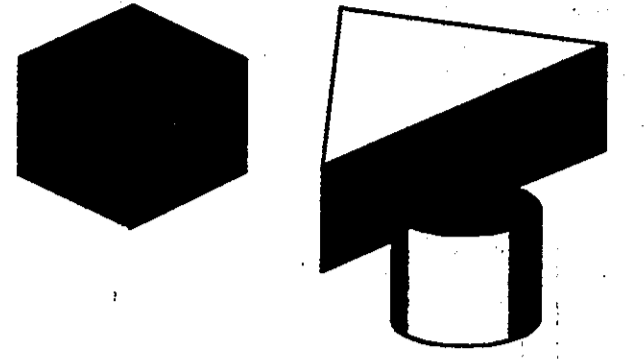
LIGHTING NOTES

- ① CIRCUIT VIA CONTACTOR LOCATED ADJACENT TO PANELBOARD SEE CONTACTOR SCHEDULE ON SHEET E23

1 FIRST FLOOR QUAD C - LIGHTING
E3 1/8" = 1' - 0"



PLAN NORTH
KEY PLAN

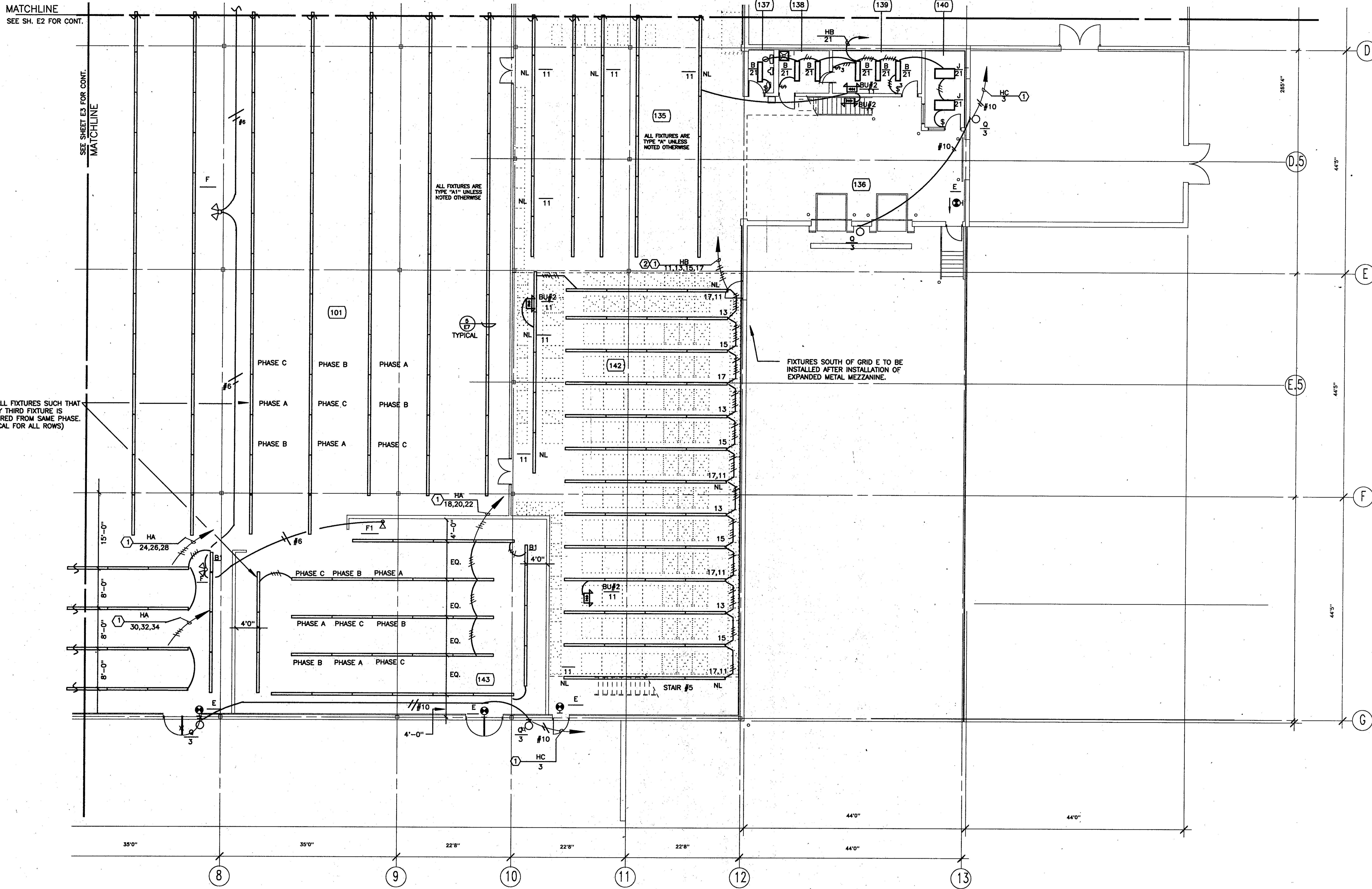


I hereby certify that this specification, or report was prepared by me or under my direct supervision, and that I am a duly registered Engineer under the laws of the State of Wisconsin.
Date 7/16/87
E 15478
Prof. No. E 11

Signed *A. Erickson*
PROFESSIONAL ENGINEER

No.	Date	Revision	Description

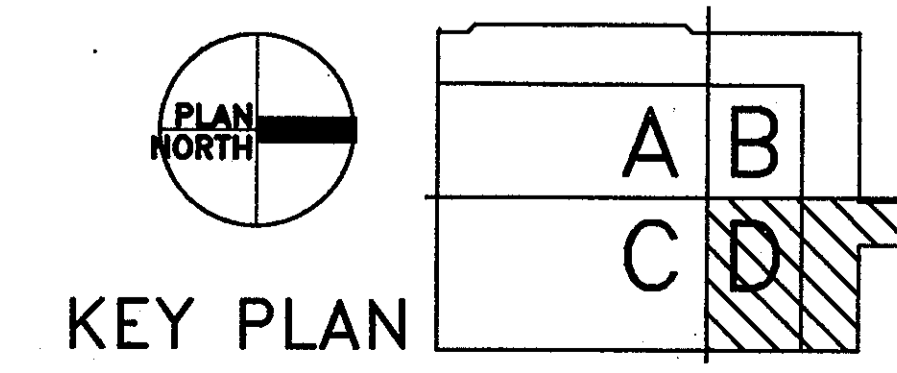
Project No. 87-30 Sheet
Date 6/22/87 E4
Drawn by RB
Checked by AE of 23



ELECTRICAL NOTES

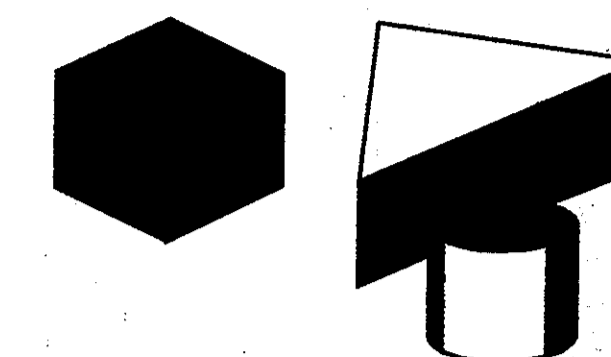
- ① CIRCUIT VIA CONTACTOR LOCATED ADJACENT TO PANELBOARD. SEE CONTACTOR SCHEDULE ON SHEET E23.
- ② DO NOT CIRCUIT NITE LIGHTING VIA CONTACTORS.

1 FIRST FLOOR QUAD D - LIGHTING
E4 1/8" = 1'-0"



BACKGROUND FLO-0-BID SET 7/2/87

MERCHANDISING FLO-0-BID SET 7/16/87

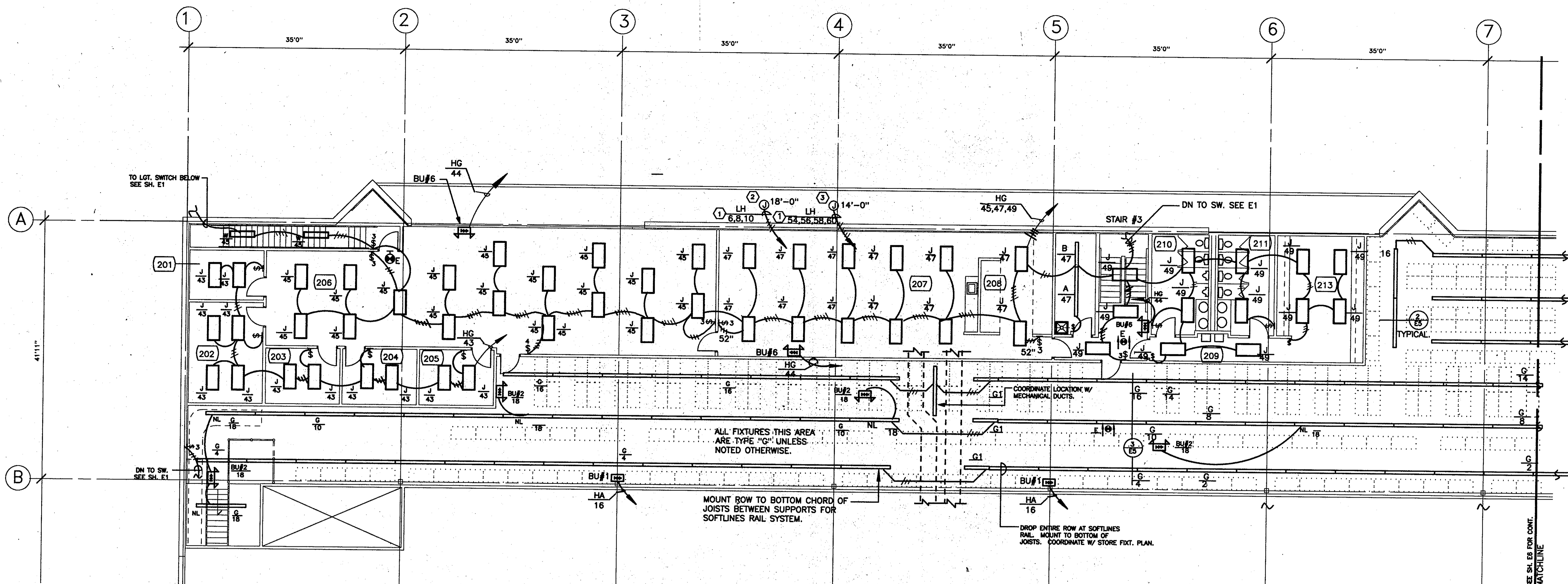


I hereby certify that this drawing, or report was prepared by me or under my direct supervision, and that I am a duly registered Engineer under the laws of the State of Minnesota.
E-15474
Exp. No. E15474
Date 7/16/87

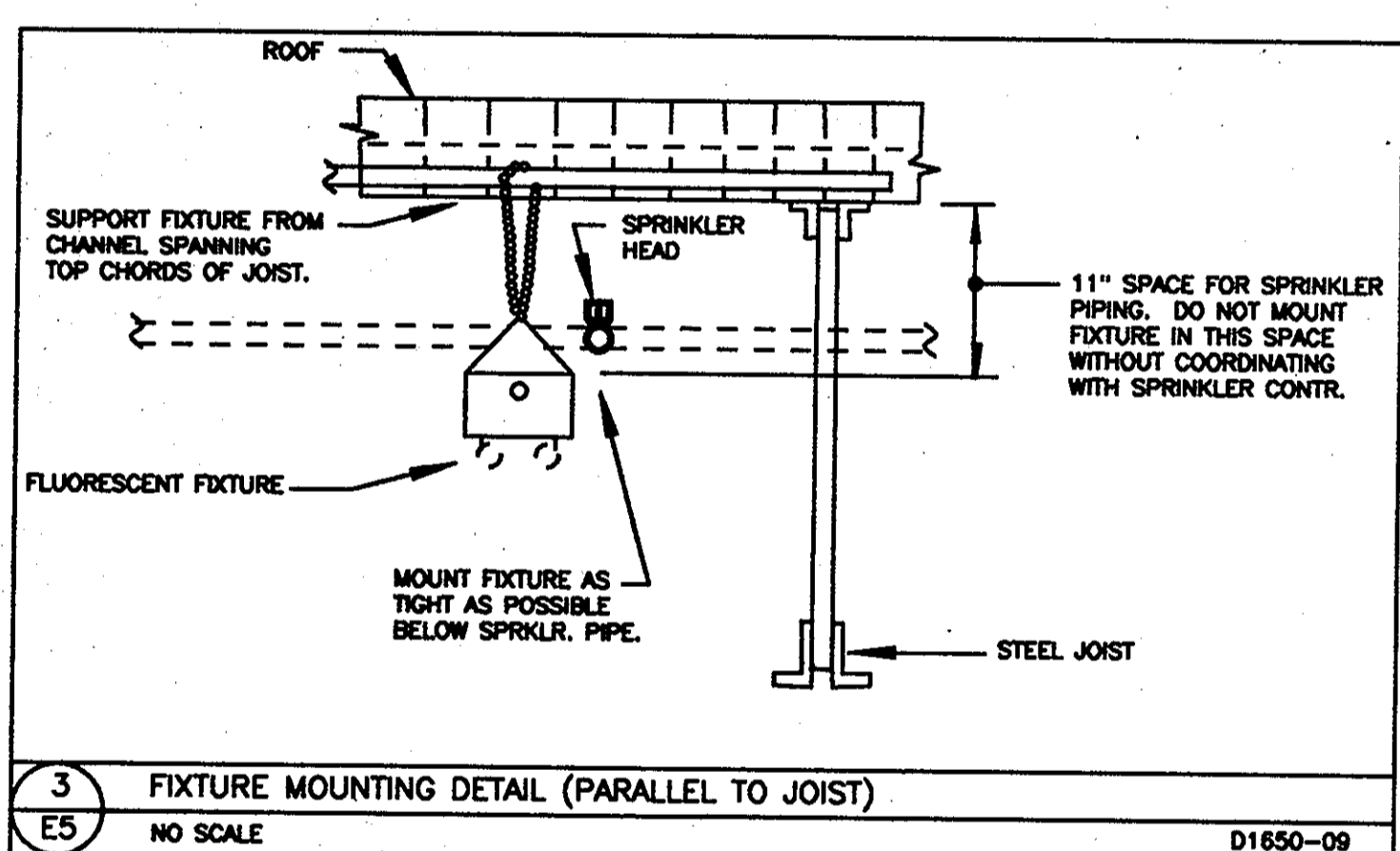
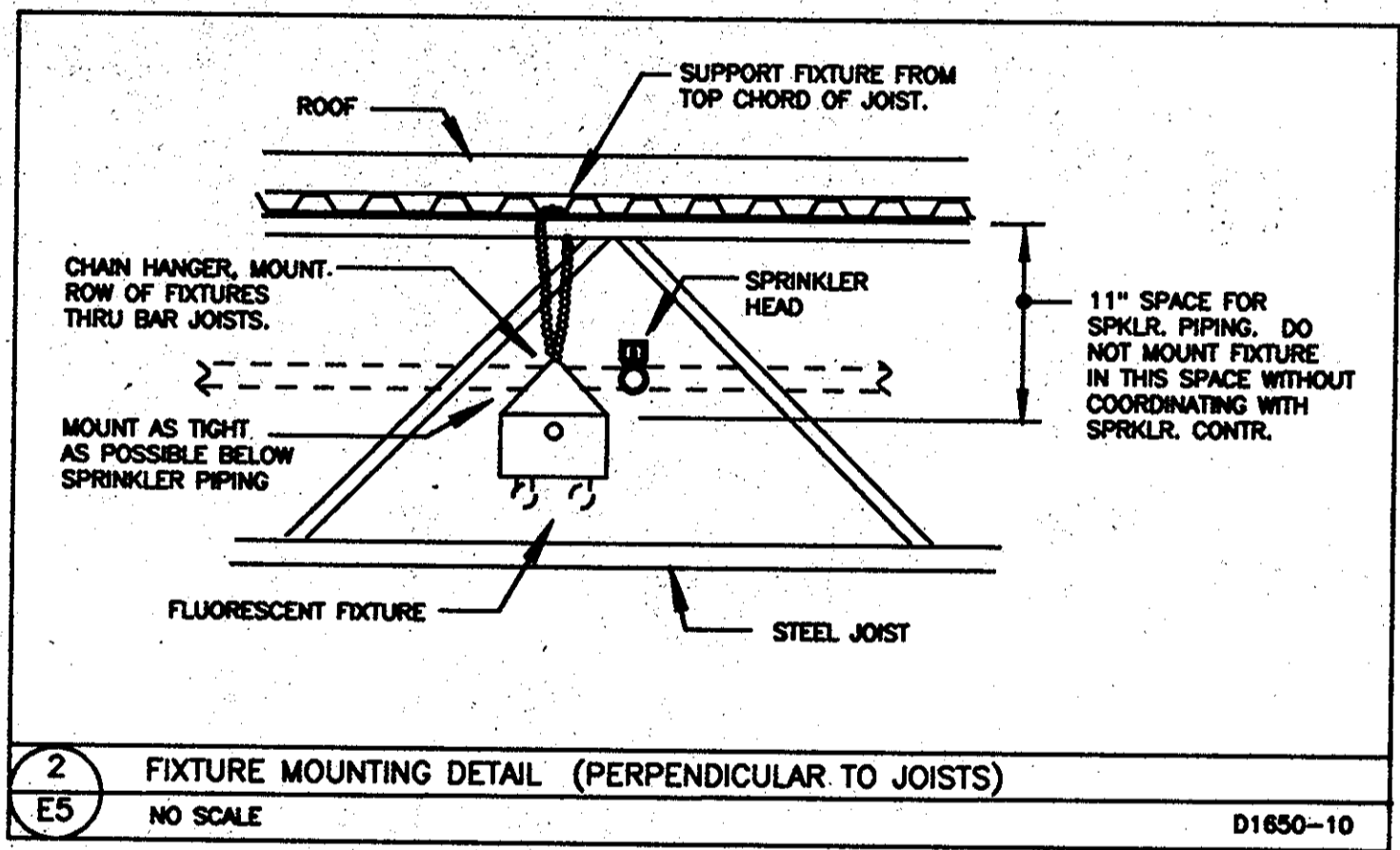
Signed *Amelia*

No. Date Revision Description

Project No. 6/22/87 Sheet
Date // E5
Drawn by RB
Checked by AE of 23



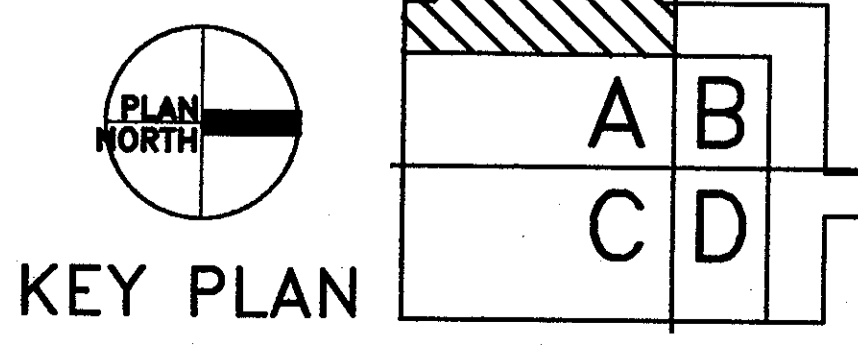
1 MEZZANINE LIGHTING QUAD A
E5 1/8"=1'-0"

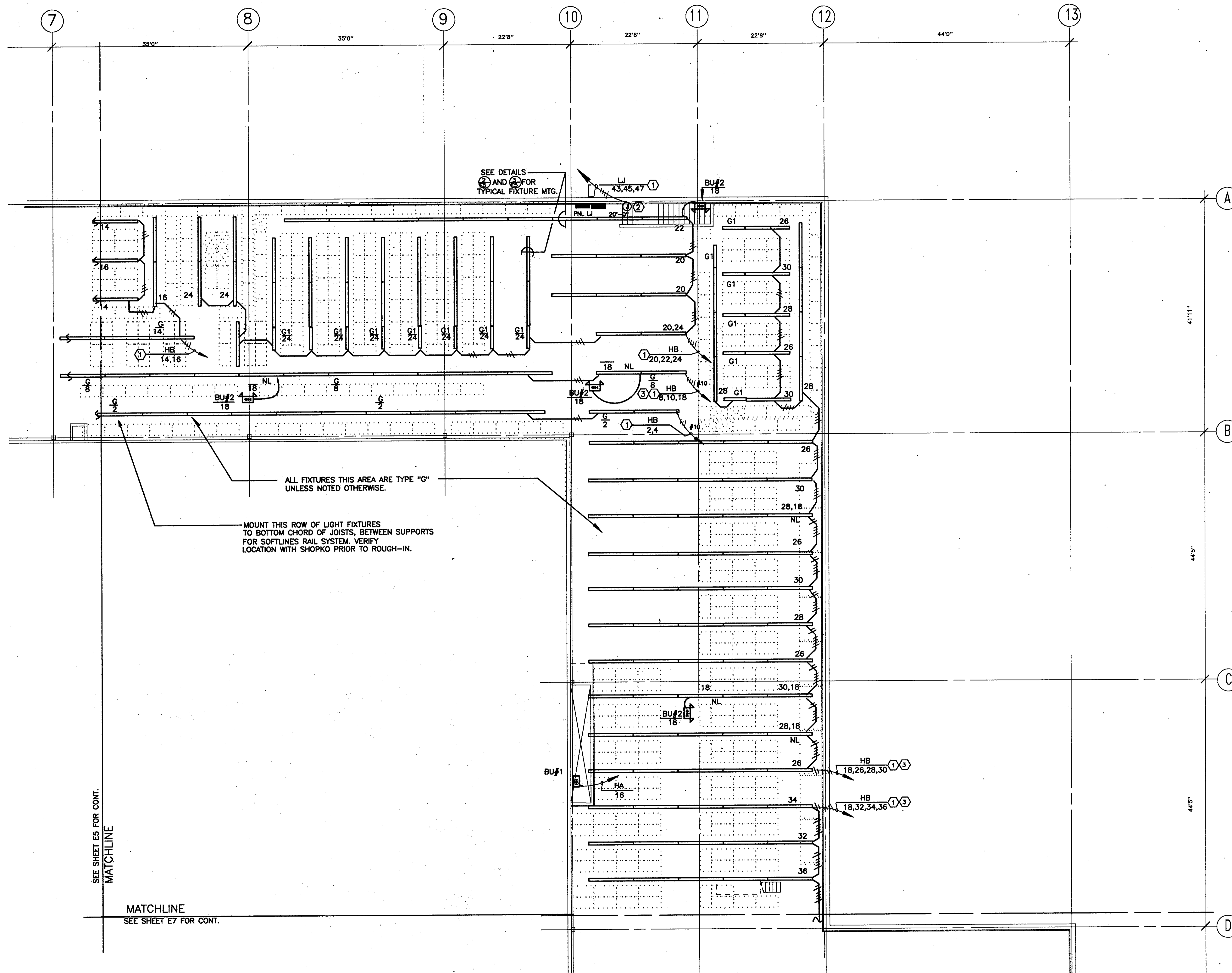
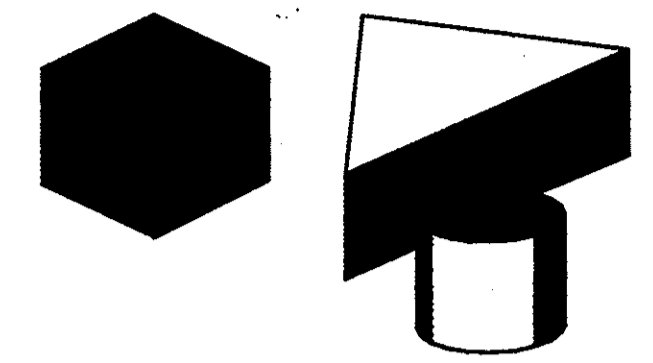


LIGHTING NOTES

- ① CIRCUIT VIA CONTACTOR LOCATED ADJACENT TO PANEL. SEE CONTACTOR SCHEDULE ON SHEET E23.
- ② J-BOX FOR CONNECTION OF STORE SIGN. LEAVE 12" EXCESS CONDUCTOR IN J-BOX. EXTENSION OF WIRING AND FINAL CONNECTION BY SIGN CONTRACTOR.
- ③ J-BOX FOR OF SIGN BAND. LEAVE 12" EXCESS CONDUCTOR IN J-BOX. EXTENSION OF WIRING AND FINAL CONNECTION BY SIGN CONTRACTOR.

BACKGROUND MERCHANDISING PLOT-GRID SET 7/8/87





SEE SHEET E5 FOR CONT.
MATCHLINE

MATCHLINE
SEE SHEET E7 FOR CONT.

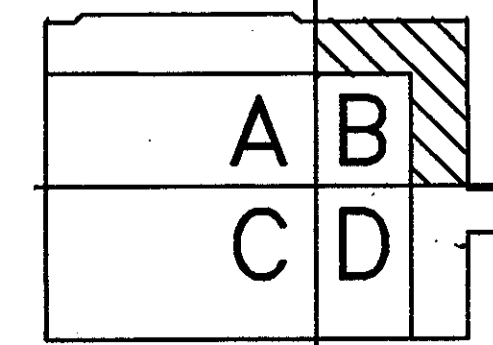
ALL FIXTURES THIS AREA ARE TYPE "G" UNLESS NOTED OTHERWISE.

MOUNT THIS ROW OF LIGHT FIXTURES TO BOTTOM CHORD OF JOISTS, BETWEEN SUPPORTS FOR SOFTLINES RAIL SYSTEM. VERIFY LOCATION WITH SHOPKO PRIOR TO ROUGH-IN.

LIGHTING NOTES

- ① CIRCUIT VIA LIGHTING CONTACTOR LOCATED ADJACENT TO PANELBOARD. SEE CONTACTOR SCHEDULE ON SHEET E23.
- ② J-BOX FOR CONNECTION OF STORE SIGN. LEAVE 12" EXCESS WIRE IN J-BOX. EXTENSION OF WIRING AND FINAL CONNECTION BY SIGN CONTRACTOR
- ③ DO NOT CIRCUIT NITE LIGHTING VIA CONTACTOR.

1 MEZZANINE QUAD B - LIGHTING
E6 1/8"=1'-0"



KEY PLAN

SHOPKO
STORE #
MADISON, WISCONSIN
PROTOTYPE P94

LIGHTING
MEZZANINE
QUAD B

I hereby certify that the preparation, calculation, or report was prepared by me or under my direct supervision, and that I am a duly Licensed Engineer under the laws of the State of Wisconsin.
7/16/87
E. 15474
Reg. No. E 15474

Signed *[Signature]*

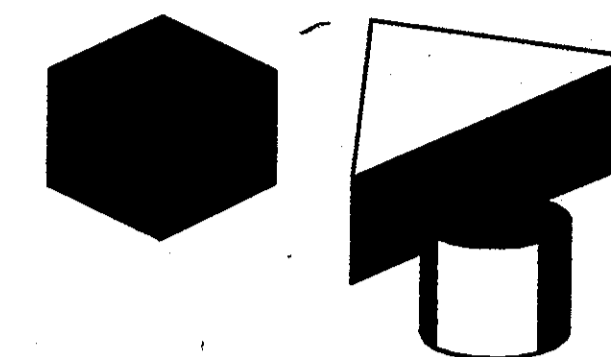
Date	Revision	Description

Project No.	87-30	Sheet	E6
Date	6/22/87	Drawn by	RB
Checked by	AE	of	23

BACKGROUND
7/8/87

MERCHANDISING
7/16/87

PLO-BID SET
7/16/87



SHOPKO
STORE #
MADISON, WISCONSIN
PROTOTYPE P94

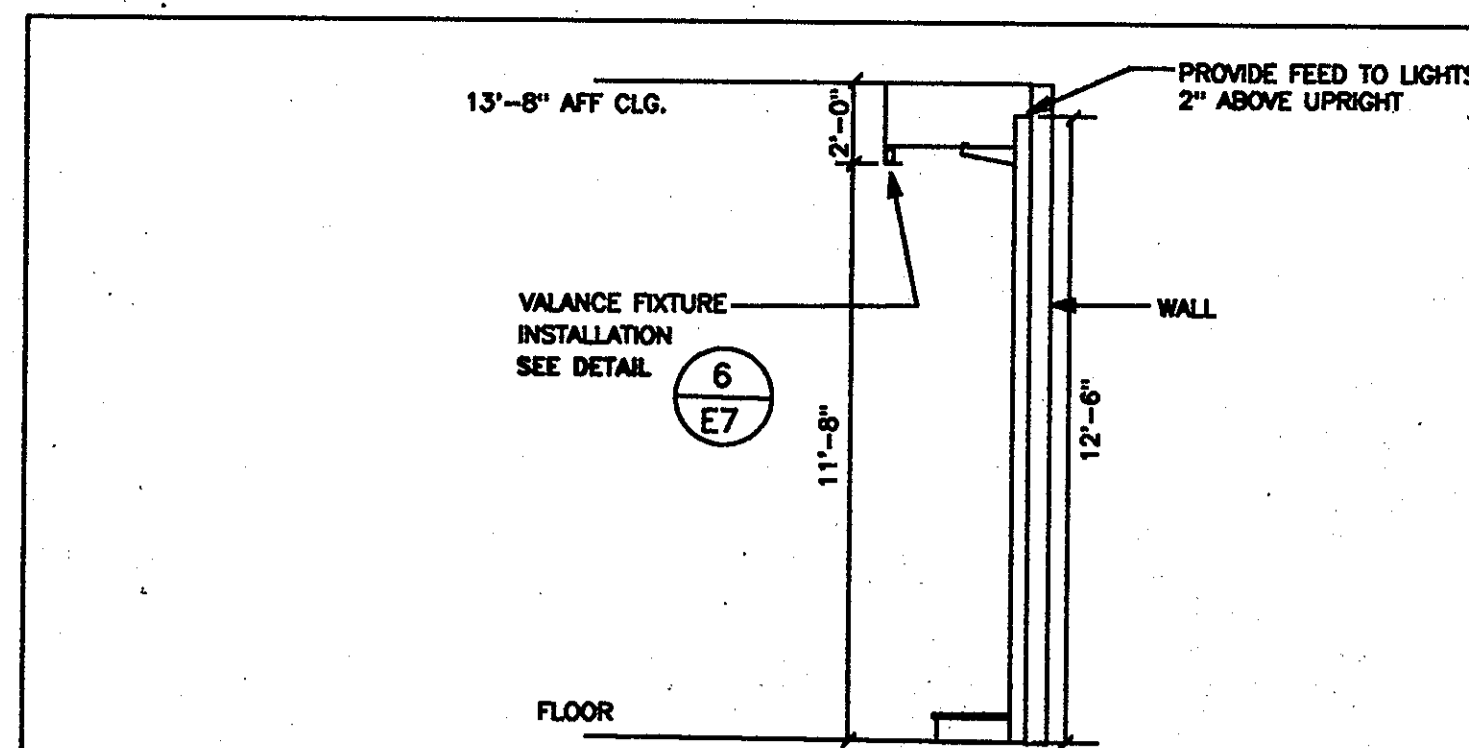
LIGHTING
MEZZANINE
QUAD D

I hereby certify that this specification, or report was prepared by me or under my direct supervision, and that I am a duly registered Engineer under the laws of the state of Minnesota.
Date 7/16/87

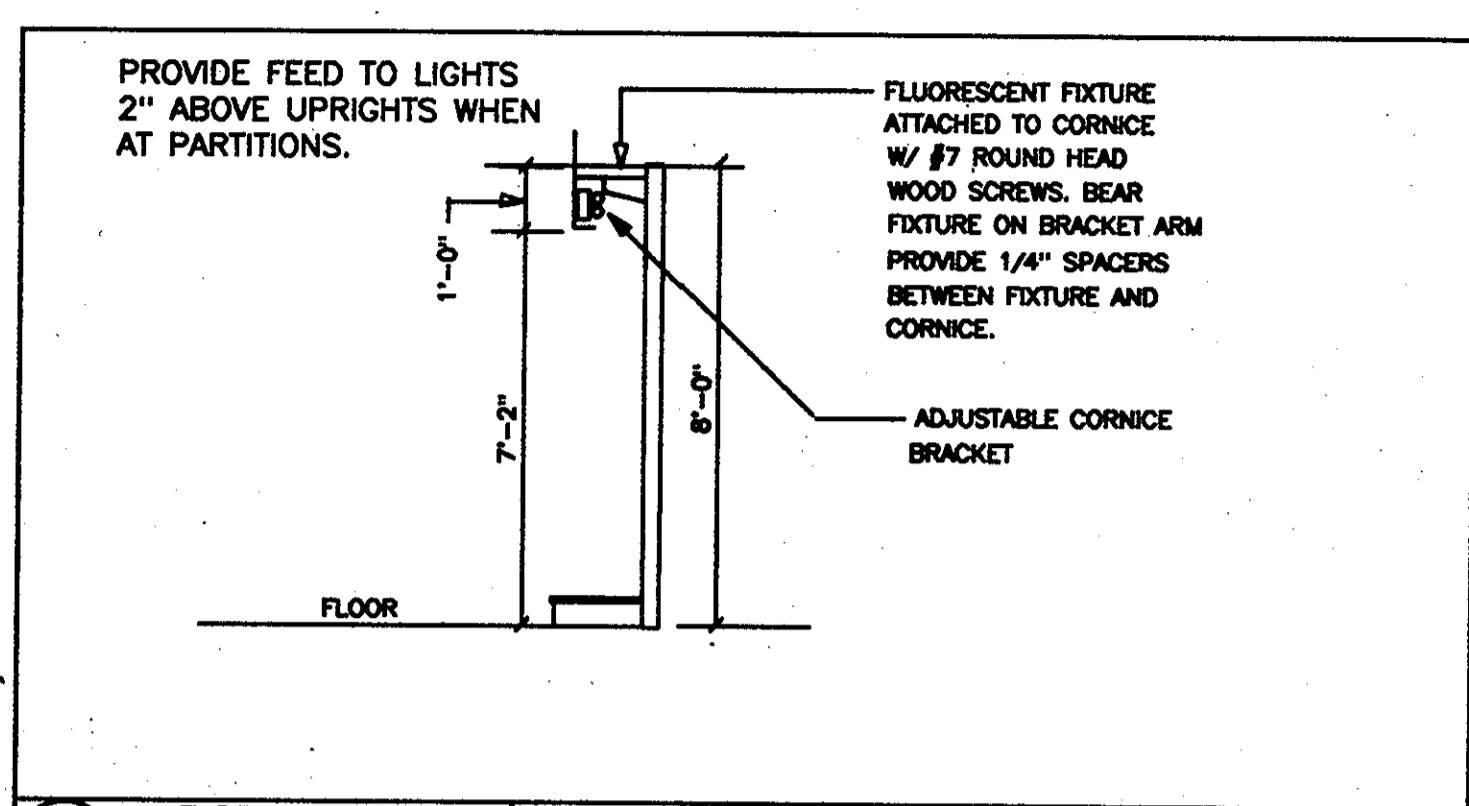
Signed *[Signature]*

No.	Date	Revision	Description

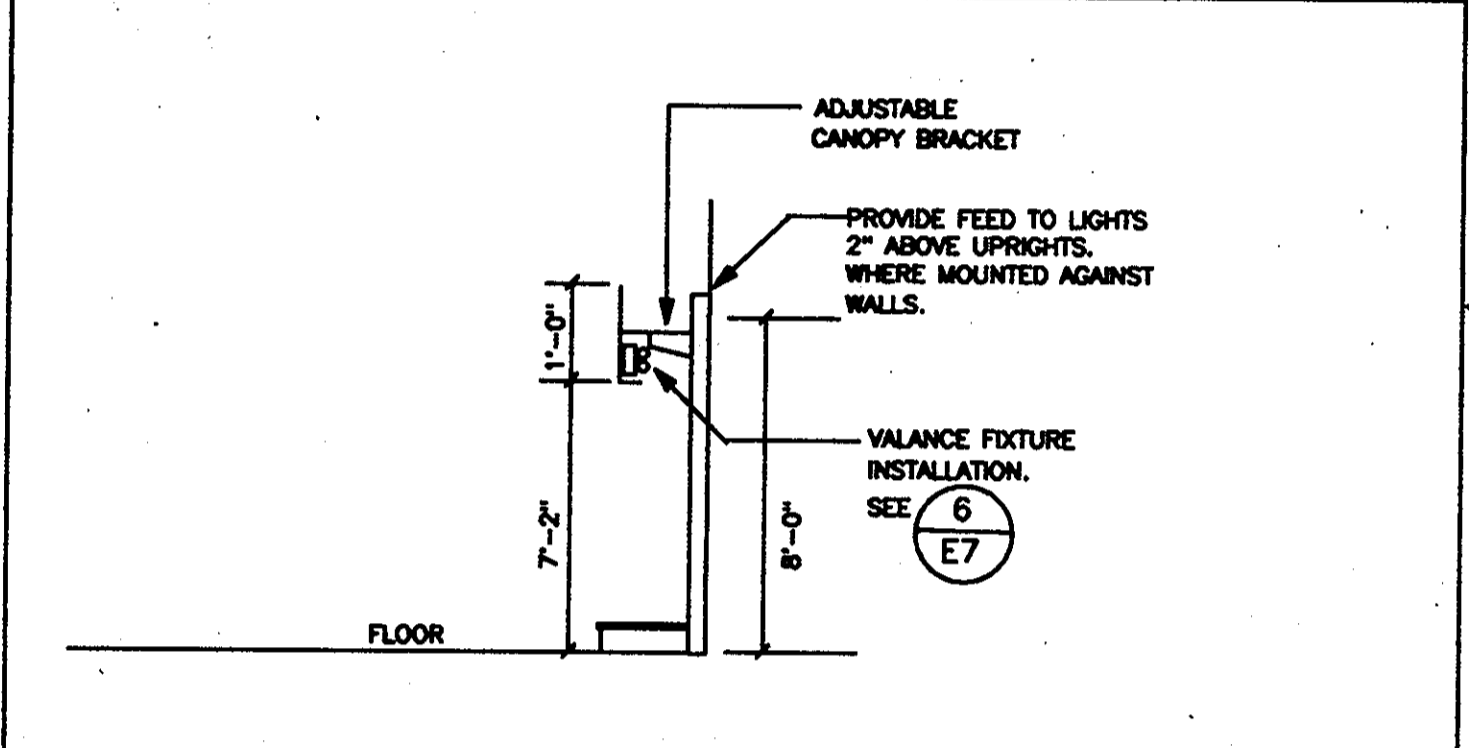
Project No. 86-192 Sheet
Date 6/22/87 E7
Drawn by RB
Checked by AE of 23



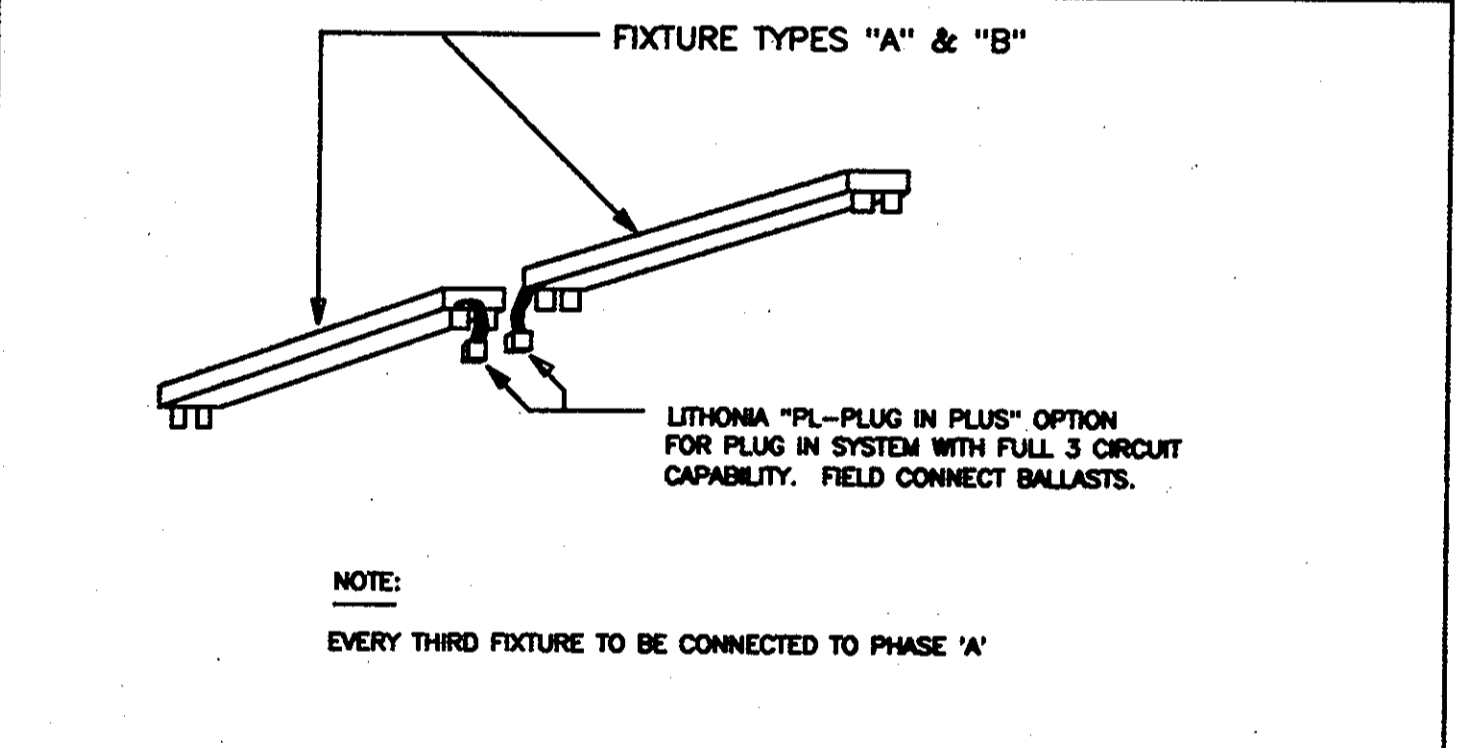
2 TYPE "1" SALES AREA: PERIMETER WALL/HARDLINES
NO SCALE D1650-01



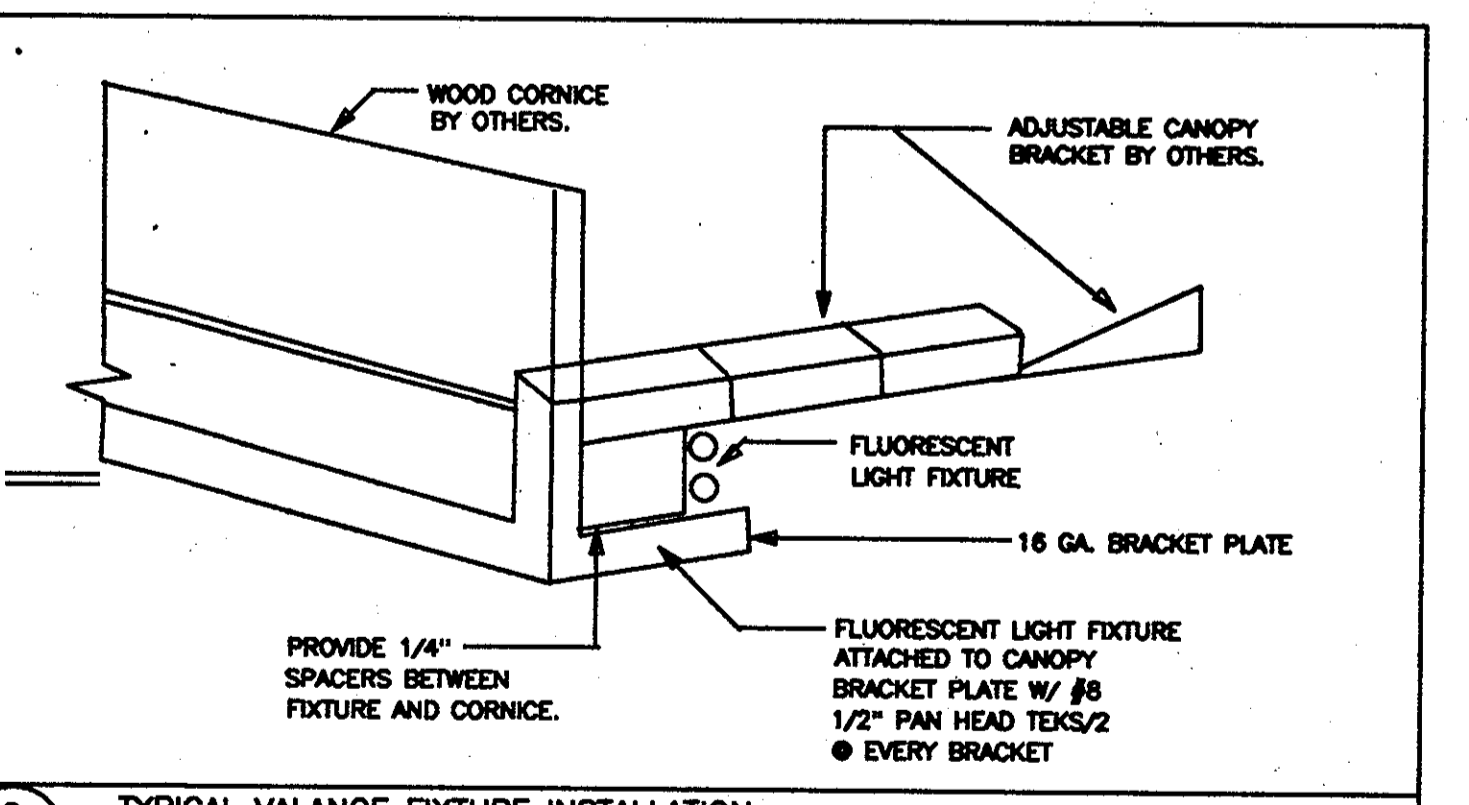
3 TYPE "6" (PHARMACY)
NO SCALE D1650-06



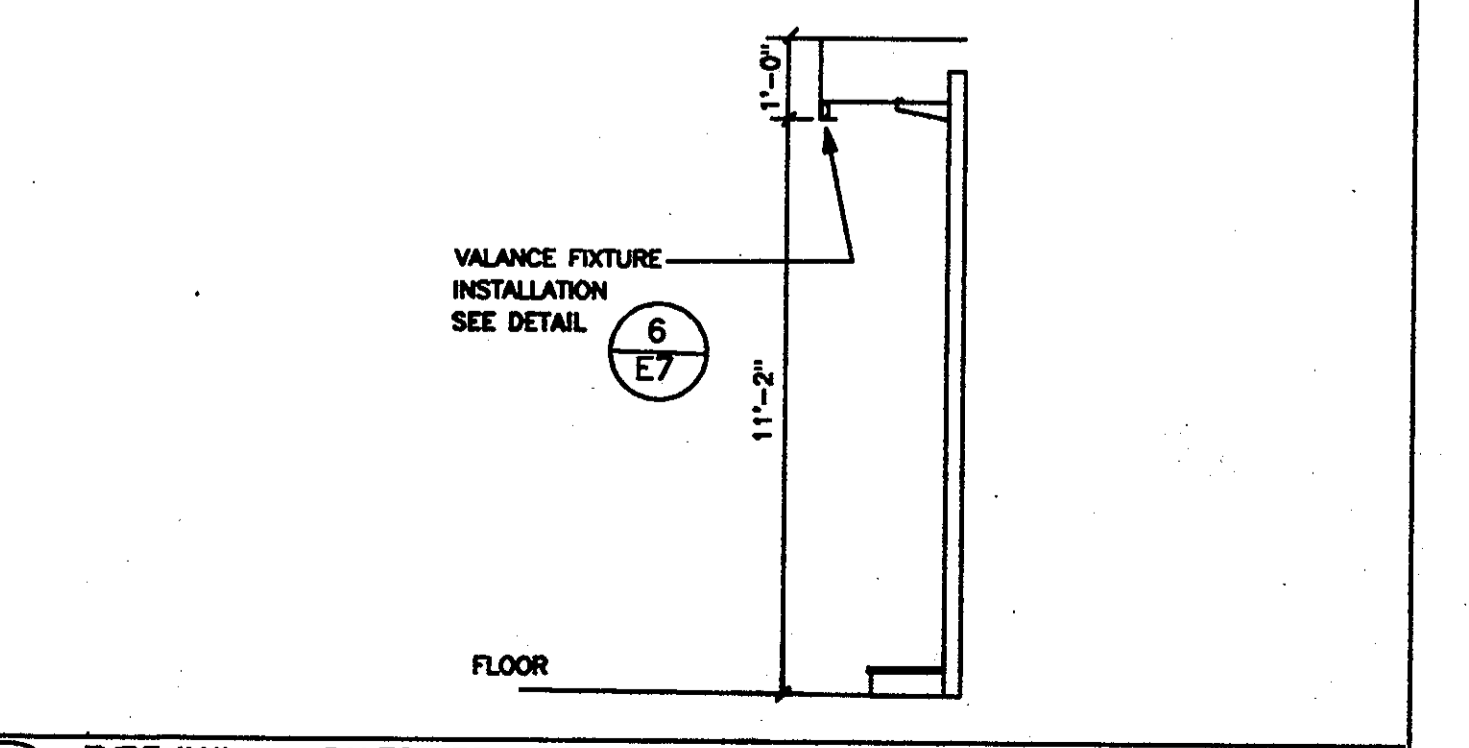
4 TYPE "3" LOW FIXTURES/FREE STANDING GONDOLAS
NO SCALE D1650-03



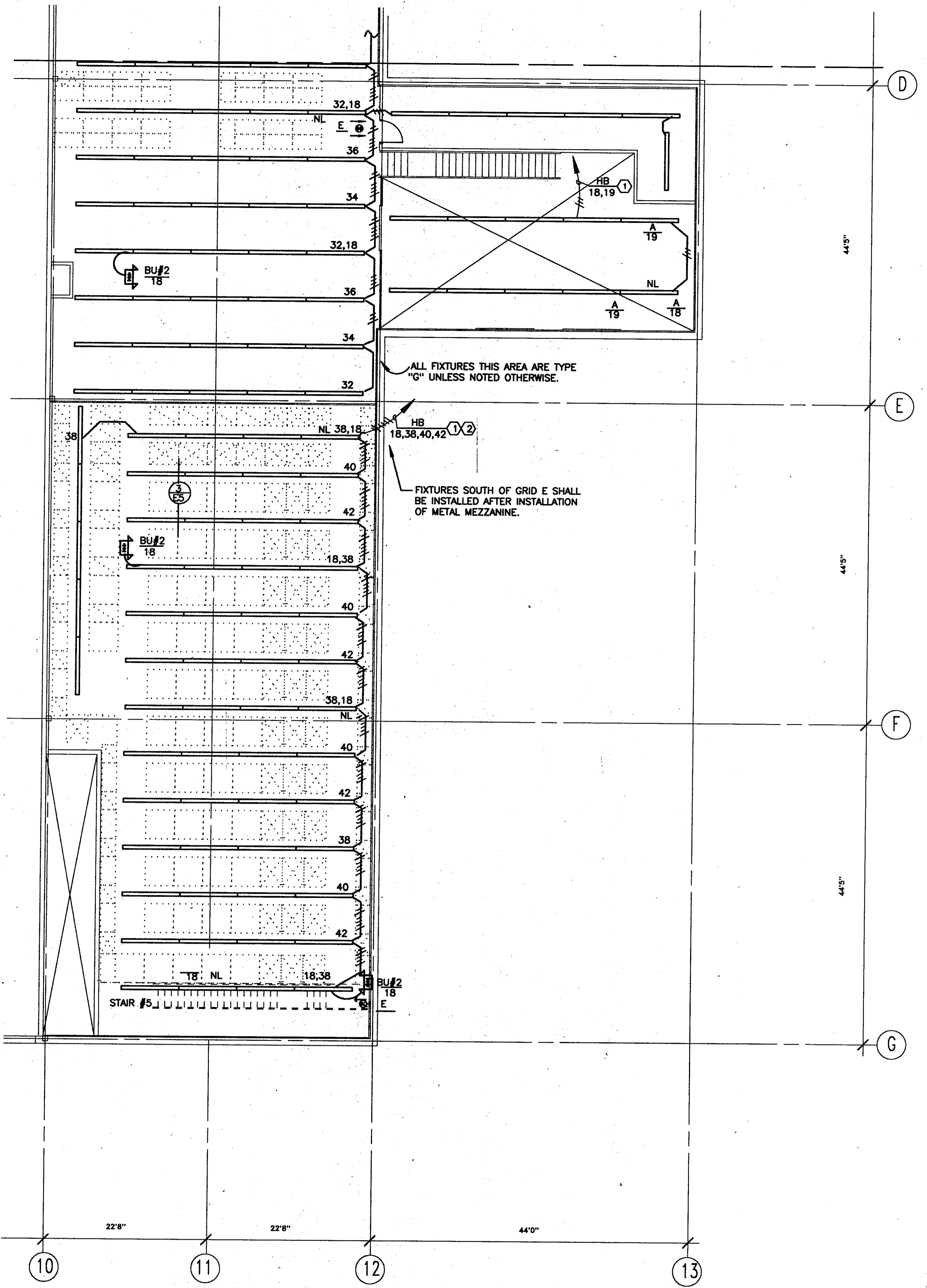
5 PLUG IN DETAIL
NO SCALE D1650-07



6 TYPICAL VALANCE FIXTURE INSTALLATION
NO SCALE D1650-11



7 TYPE "1" SALES AREA: DOMESTICS VALANCE
NO SCALE D1650-12



- LIGHTING NOTES
- CIRCUIT VIA CONTACTOR LOCATED ADJACENT TO PANELBOARD. SEE CONTACTOR SCHEDULE ON SHEET E23.
 - DO NOT CIRCUIT NIGHT LIGHTING VIA CONTACTOR.

1 MEZZANINE LIGHTING QUAD D
1/8"=1'-0"

BACKGROUND 7/8/87
MERCHANDISING PLOT-BID SET 7/16/87

