

APPLICATION FOR  
URBAN DESIGN COMMISSION  
REVIEW AND APPROVAL

AGENDA ITEM # \_\_\_\_\_  
Project # \_\_\_\_\_

DATE SUBMITTED: <u>3/5/08</u>	<b>Action Requested</b>
UDC MEETING DATE: <u>3/12/08</u>	<input checked="" type="checkbox"/> Informational Presentation
	<input type="checkbox"/> Initial Approval and/or Recommendation
	<input type="checkbox"/> Final Approval and/or Recommendation

PROJECT ADDRESS: LOTS 48, 49 & 50  
SECOND ADDITION TO TRUAX AIR PARK WEST

ALDERMANIC DISTRICT: 15

OWNER/DEVELOPER (Partners and/or Principals) THE RIFKEN GROUP ARCHITECT/DESIGNER/OR AGENT: POTTER LAWSON, INC.  
14. W. MIFFLIN ST., SUITE 300 15 ELLIS POTTER CT.  
MADISON WI 53701 MADISON WI 53711

CONTACT PERSON: MICHAEL GORDON  
Address: 15 ELLIS POTTER CT.  
MADISON WI 53711  
Phone: 608/274-2741  
Fax: 608/274-3674  
E-mail address: mikeg@potterlawson.com

TYPE OF PROJECT:

(See Section A for:)

- Planned Unit Development (PUD)
  - General Development Plan (GDP)
  - Specific Implementation Plan (SIP)
- Planned Community Development (PCD)
  - General Development Plan (GDP)
  - Specific Implementation Plan (SIP)
- Planned Residential Development (PRD)
- New Construction or Exterior Remodeling in an Urban Design District \* (A public hearing is required as well as a fee)
- School, Public Building or Space (Fee may be required)
- New Construction or Addition to or Remodeling of a Retail, Hotel or Motel Building Exceeding 40,000 Sq. Ft.
- Planned Commercial Site

(See Section B for:)

- New Construction or Exterior Remodeling in C4 District (Fee required)

(See Section C for:)

- R.P.S.M. Parking Variance (Fee required)

(See Section D for:)

- Comprehensive Design Review\* (Fee required)
- Street Graphics Variance\* (Fee required)
- Other \_\_\_\_\_

\*Public Hearing Required (Submission Deadline 3 Weeks in Advance of Meeting Date)

Where fees are required (as noted above) they apply with the first submittal for either initial or final approval of a project.

MATC's Center for Human & Protective Services Education is currently located in inadequate facilities. The College is seeking to provide a new facility for part of the program. The Protective Services Center will be home for MATC's programs for Law Enforcement, Fire, and EMS Services training. In addition, City fire and police departments will have space and share training facilities.

The Rifken Group will construct the building and lease it to MATC. It will be located in the Airport Urban Design District, between Packers Avenue and Pankratz Street, south of the International Lane intersection. The property is approximately 6 ½ acres with a slight slope, draining to a swale in the east setback.

The building will be about 70,500 sf. Spaces within the building will include classrooms, labs, offices, a lecture hall (amphitheater), firing range and a garage for training vehicles. Most spaces will occupy a two-story bar, at the north edge of the site. A single story wing will connect to the two-story bar at the west edge of the property. This single story wing will accommodate the apparatus garage, fire range and related spaces.

The site was planned for expansion. Parking will be provided to meet Zoning and user needs. For the occasional assembly functions involving greater numbers of occupants, they will be transported from the main MATC parking lots. Landscaping has not been explored, but will be used to screen parking to the extent that the west wing does not.

The exterior materials have not been finalized. However we are exploring either masonry or precast concrete used in conjunction with glass in aluminum frames and metal panels. Glazing will be concentrated on the north and south facades. The east and west facades establish a language of massive planes supporting exterior walls of lighter materials.

Urban Design Commission Informational Submittal 05, March, 2008



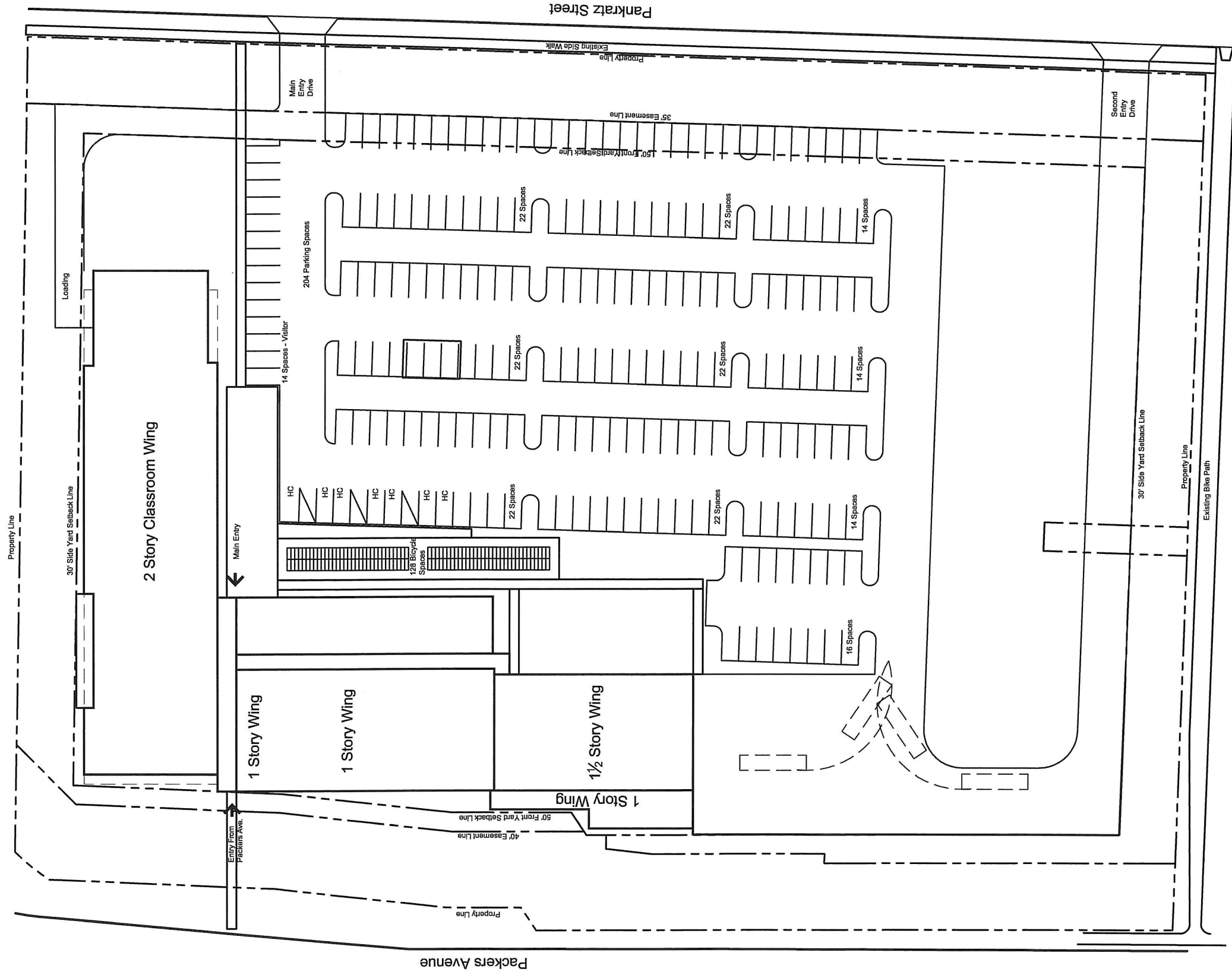
DEVELOPMENT  
BROKERAGE  
MANAGEMENT

**MATC Protective Services Center - Madison, Wisconsin**

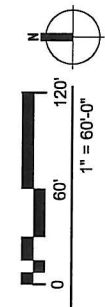
Potter Lawson Copyright 2008 15 Ellis Potter Court, Madison, Wisconsin 53711





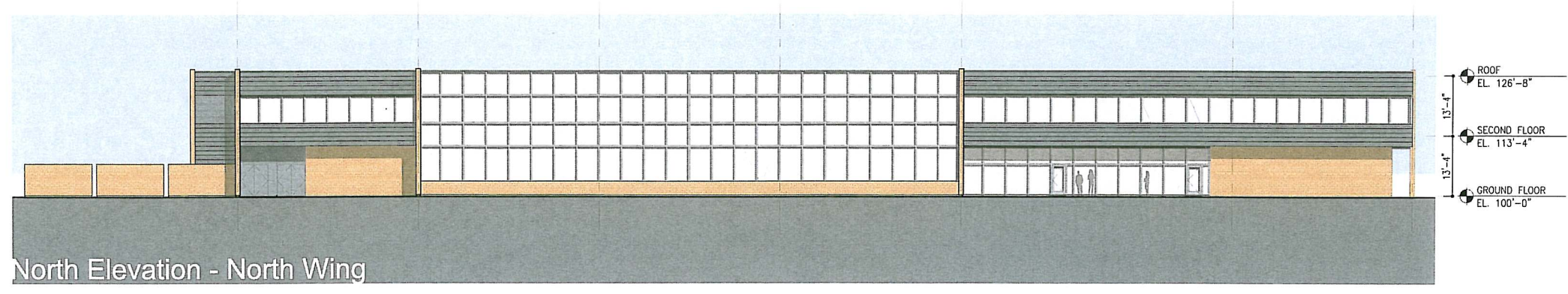


Site Plan





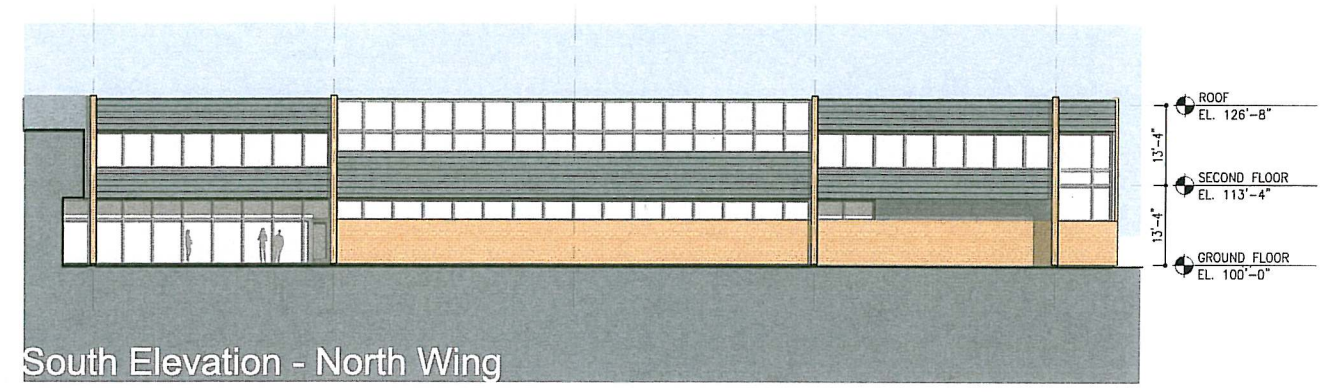




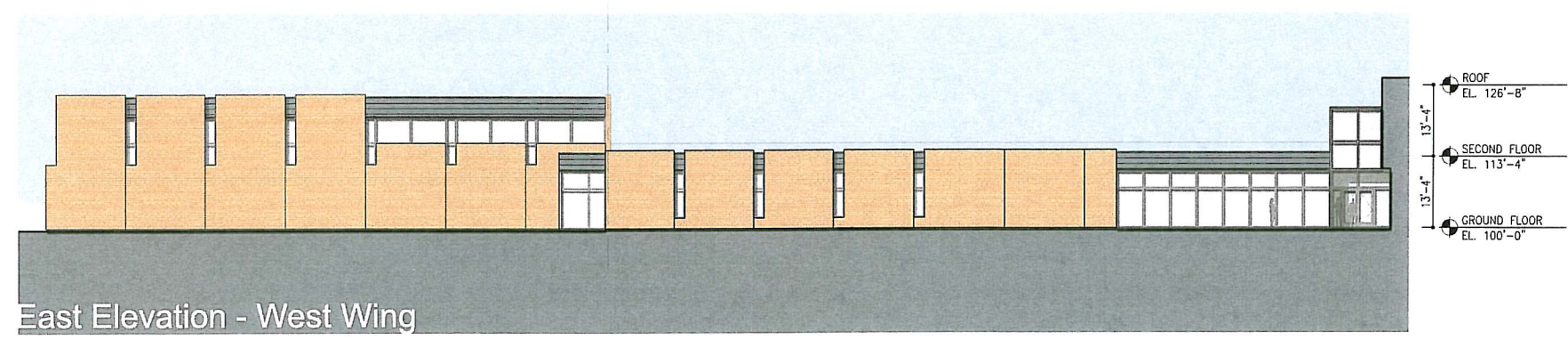
North Elevation - North Wing



South Elevation - West Wing



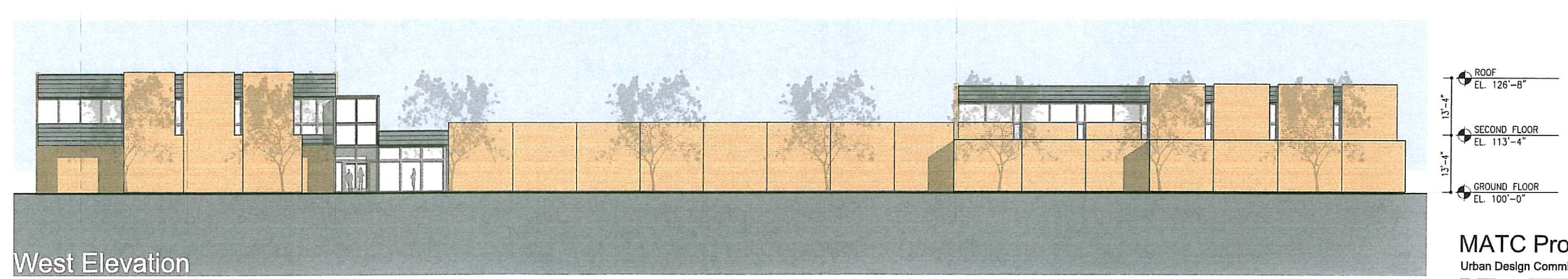
South Elevation - North Wing



East Elevation - West Wing



East Elevation - North Wing



West Elevation



