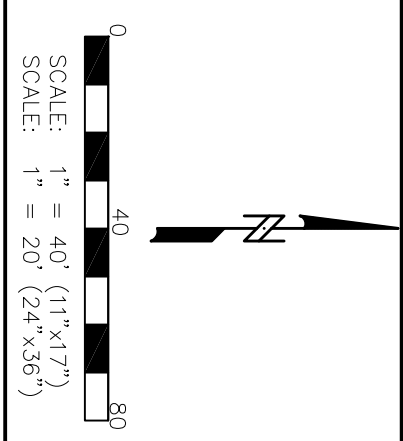


**LEGEND**

•	3/4" SOLID IRON ROD FOUND	□	ELECTRIC PEDESTAL
•	1-1/4" SOLID IRON ROD FOUND	□	TV PEDESTAL
( )	INDICATES RECORDED AS	□	TELEPHONE PEDESTAL
( )	DISTANCES ARE MEASURED TO THE NEAREST HUNDRETH OF A FOOT.	□	HYDRANT
—	GUY WIRE	□	GAS VALVE
—	MANHOLE	□	WATER VALVE
⊙	SANITARY MANHOLE	□	UTILITY POLE
⊙	STORM MANHOLE	□	LIGHT POLE
—		—	STORM "H" INLET
—		—	OVERHEAD UTILITY LINE
—		—	BURIED GAS LINE
—		—	WATER MAIN
—		—	SANITARY SEWER
—		—	STORM SEWER
—		—	BURIED TELEPHONE LINE
—		—	BURIED ELECTRIC LINE
—		—	BURIED FIBER OPTIC LINE
—		—	BURIED CABLE TELEVISION LINE

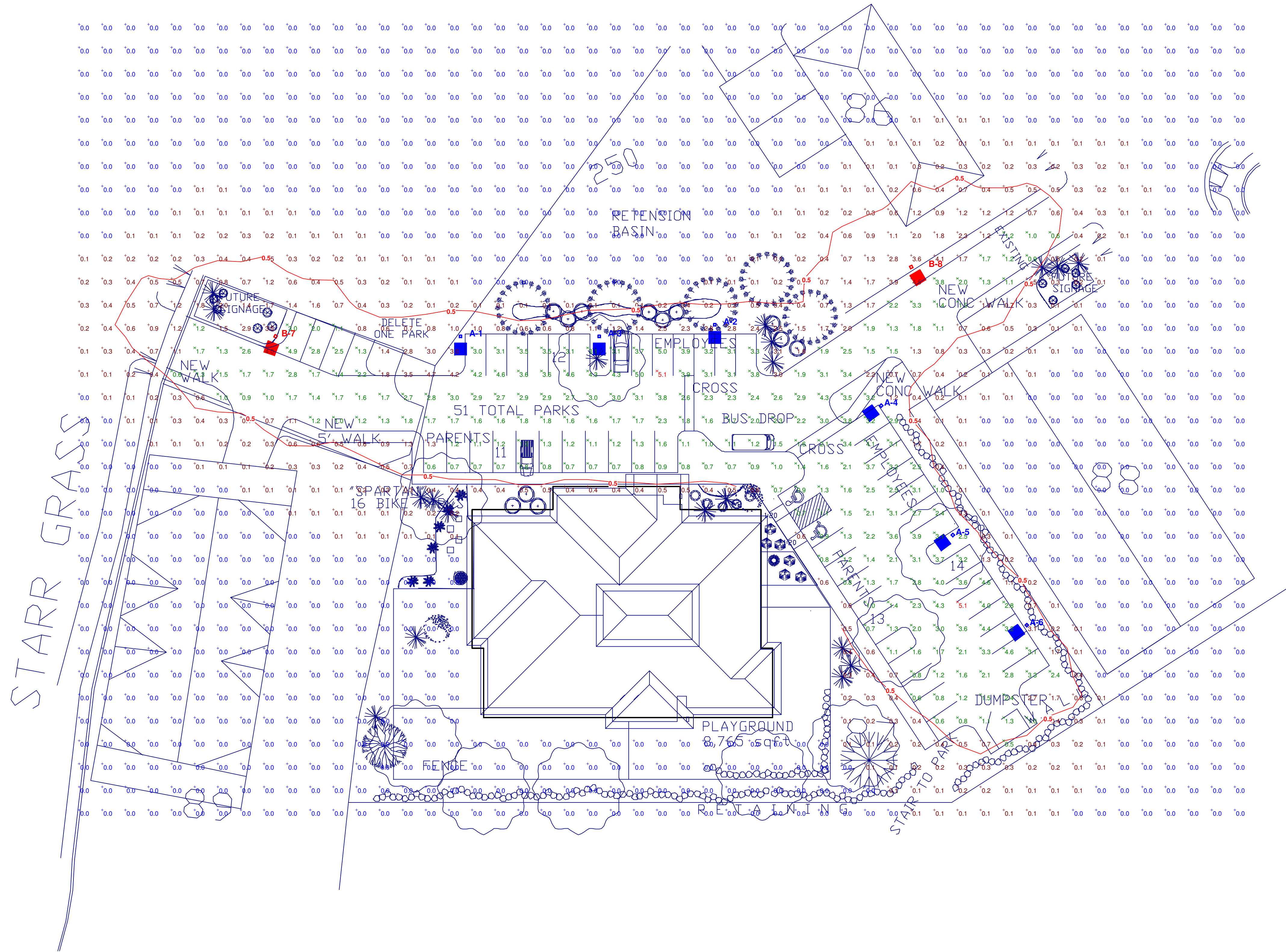




LUMINAIRE SCHEDULE									
Symbol	Label	Qty	Catalog Number	Description	Lamp	File	Lumens	LLF	Watts
■	A	6	AS2 250M PS SR4SC	ARCHITECTURAL ARM-MOUNTED CUTOFF LUMINAIRE WITH SR4SC REFLECTOR.	MH 250/HOR/PS	Lt110399.ies	23600	0.72	297
■	B	2	AS2 250M PS SR2	ARCHITECTURAL ARM-MOUNTED CUTOFF LUMINAIRE WITH SR2 REFLECTOR.	MH 250/HOR/PS	Lt110417.ies	23600	0.72	297

STATISTICS						
Description	Symbol	Avg	Max	Min	Max/Min	Avg/Min
PARKING LOT	⊗	2.2 fc	5.1 fc	0.5 fc	10.2:1	4.4:1
SITE CALCULATIONS	+	0.5 fc	5.1 fc	0.0 fc	N/A	N/A

LUMINAIRE LOCATIONS											
No.	Label	X	Location Y	Z	MH	Orientation	Tilt	X	Aim Y	Z	
1	A	165.0	205.0	22.0	22.0	180.0	0.0	165.0	203.6	0.0	
2	A	275.0	210.0	22.0	22.0	180.0	0.0	275.0	208.6	0.0	
3	A	225.0	205.0	22.0	22.0	180.0	0.0	225.0	203.6	0.0	
4	A	347.0	175.0	22.0	22.0	234.5	0.0	345.9	174.2	0.0	
5	A	378.0	119.0	22.0	22.0	234.5	0.0	376.9	118.2	0.0	
6	A	410.0	80.0	22.0	22.0	234.5	0.0	408.9	79.2	0.0	
7	B	85.0	205.0	22.0	22.0	200.0	0.0	84.5	203.7	0.0	
8	B	360.0	235.0	22.0	22.0	147.5	0.0	360.7	233.8	0.0	



Plan View  
Scale 1" = 25'





SITE AND ADJACENT BUILDING PHOTOS





## FEATURES & SPECIFICATIONS

**INTENDED USE** — Streets, walkways, parking lots and surrounding areas.

**CONSTRUCTION** — Rugged, die-cast, single-piece aluminum housing with nominal wall thickness of 1/8". Die-cast door frame has impact-resistant, tempered, glass lens (3/16" thick). Door frame is fully gasketed with one-piece tubular silicone. **US. Patent No. D447,590. Canada Patent No. 94324.**

**FINISH** — Standard finish is dark bronze polyester powder finish. Additional architectural colors are available; see [www.lithonia.com/archcolors](http://www.lithonia.com/archcolors).

**OPTICAL SYSTEM** — Anodized segmented reflectors for superior uniformity and control. Reflectors attach with tool-less fasteners and are rotatable and interchangeable. Five full cutoff distributions available: Type II (roadway), Type III (asymmetric), Type IV (forward throw), Type IV (wide, forward throw) and Type V (symmetric square).

**ELECTRICAL SYSTEM** — Ballast: Constant-wattage autotransformer ballast standard. Super CWA pulse-start ballast required 200W, 320W and 350W (SCWA option). Ballast is copper-wound and 100% factory-tested. All ballasts are mounted on a removable power tray with tool-less latch and have positive locking disconnect plugs.

Socket: Porcelain, horizontally-mounted, mogul-base socket with copper alloy, nickel-plated screw shell and center contact.

**INSTALLATION** — Integral arm for pole or wall mounting. Optional mountings available.

**LISTING** — UL Listed (standard). CSA Certified (see Options). UL listed for 25°C ambient and wet locations. IP65 Rated.

NOTE: Specifications subject to change without notice.

Catalog Number		<b>MIDTOWNE COMMONS DAYCARE</b>	
Notes		Type	
AS2 250M SR4SC TB SPA SCWA DDB LPI (QTY 6)		<b>A</b>	

# AERIS™

Architectural Area & Roadway Luminaires

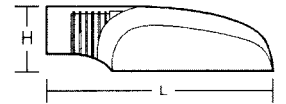
## AS2



### Specifications

EPA: 1.2 ft<sup>2</sup>  
 Length: 28.6 (72.6)  
 Width: 17.1 (43.4)  
 Depth: 8.3 (21.0)  
 \*Weight: 40 lbs (18.2 kg)  
 \*Weight as configured in example below.

**METAL HALIDE: 200W-400W**  
**HIGH PRESSURE SODIUM: 200W-400W**  
 10' to 35' Mounting



All dimensions are inches (centimeters) unless otherwise specified.

## ORDERING INFORMATION

For shortest lead times, configure product using **standard options (shown in bold)**.

Example: AS2 250M SR3 TB SPA LPI

AS2	250M	SR4SC	TB	SPA	SCWA		DDB	LPI
Series	Wattage <sup>1</sup>		Voltage	Mounting	Ballast	Options	Finish <sup>13</sup>	Lamp <sup>14</sup>
<b>AS2</b>	<u>Metal halide</u>		120	<b>SPA Square pole mounting</b>	(blank) <b>Magnetic ballast</b>	<u>Shipped installed in fixture</u>	(blank) <b>Dark bronze</b>	<b>LPI Lamp included</b>
	200M <sup>2</sup>		208 <sup>5</sup>	<b>RPA Round pole mounting</b>	CWI Constant wattage isolated	SF Single fuse 120, 277, 347V	<b>DBL Black</b>	<b>L/LP Less lamp</b>
	250M <sup>2</sup>		240 <sup>6</sup>	WBA Wall bracket (up or down) <sup>9</sup>	<b>Pulse Start</b>	DF Double fuse 208, 240, 480V	DGC Charcoal gray	
	320M <sup>2</sup>		277	ASKMA2 Mast arm adapter <sup>10</sup>	SCWA Super CWA pulse start ballast	PER NEMA twist-lock receptacle only (no photocontrol)	<b>DMB Medium bronze</b>	
	350M <sup>2,3</sup>		347	DCAS2 Decorative curved arm, square pole only <sup>10</sup>	NOTE: SCWA ballast must be selected to comply with California Title 20 metal halide regulations. SCWA also may be required to meet other states' regulations. Consult local authorities.	EC Emergency circuit <sup>11</sup>	<b>DNA Natural aluminum</b>	
	400M <sup>3</sup>		480 <sup>6</sup>	DCAS2R Decorative curved arm, round pole only <sup>10</sup>		QRS Quartz restrike system <sup>11</sup>	<b>DWH White</b>	
	<u>High pressure sodium<sup>4</sup></u>		TB <sup>6</sup>			HS Houseside shield (SR2, SR3, SR4W)	CR Corrosion resistance	
	200S		TBV <sup>7</sup>			CSA CSA Certified		
	250S		23050HZ <sup>8</sup>			NOM NOM Certified		
	400S					<u>Shipped separately<sup>12</sup></u>		
	Distribution					PE1 NEMA twist-lock PE (120, 208, 240V)		
	SR2 Segmented type II roadway					PE3 NEMA twist-lock PE (347V)		
	<b>SR3 Segmented type III asymmetric</b>					PE4 NEMA twist-lock PE (480V)		
	<b>SR4SC Segmented type IV forward throw, sharp cutoff</b>					PE7 NEMA twist-lock PE (277V)		
	<b>SR4W Segmented type IV wide, forward throw</b>					VG Vandal guard		
	SR5S Segmented type V square					SC Shorting cap		

### NOTES:

- Lower wattages available. Consult factory.
- Must be ordered with SCWA.
- Must use reduced jacket lamp.
- Not available with SCWA.
- Must specify CWI for use in Canada.
- Optional multi-tap ballast (120, 208, 240, 277V) (120, 277, 347V in Canada).
- Optional 5-tap ballast (120, 208, 240, 277, 480V).
- Consult factory for available wattage.<sup>3</sup>
- Mounted in lens-up orientation, fixture is damp location listed.
- Shipped separately.
- Maximum allowance wattage lamp included.
- May be ordered as an accessory.
- Additional architectural colors available; see [www.lithonia.com/archcolors](http://www.lithonia.com/archcolors).
- Must be specified.

Note: Aeris™ has a unique drilling template that requires an Aeris drilling pattern to be specified when ordering poles. See example below.  
 Example: SSA 20 4C **DM19AS** DDB

### Aeris Drilling Pattern

<b>DM19AS</b>	1 at 90 degrees
<b>DM28AS</b>	2 at 180 degrees
<b>DM29AS</b>	2 at 90 degrees
<b>DM39AS</b>	3 at 90 degrees
<b>DM49AS</b>	4 at 90 degrees
<b>DM32AS</b>	3 at 120 degrees (round poles only)



Consistent with LEED® goals & Green Globes™ criteria for light pollution reduction

### Accessories: Tenon Mounting Slipfitter

Order as separate catalog number. Must be used with round pole mounting (RPA).

Tenon O.D.	Number of fixtures					
	One	Two@180°	Two@90°	Three@120°	Three@90°	Four@90°
2-3/8"	AST20-190	AST20-280	AST20-290	AST20-320	AST20-390	AST20-490
2-7/8"	AST25-190	AST25-280	AST25-290	AST25-320	AST25-390	AST25-490
4"	AST35-190	AST35-280	AST35-290	AST35-320	AST35-390	AST35-490
AS2VG	Vandal guard					





## FEATURES & SPECIFICATIONS

**INTENDED USE** — Streets, walkways, parking lots and surrounding areas.

**CONSTRUCTION** — Rugged, die-cast, single-piece aluminum housing with nominal wall thickness of 1/8". Die-cast door frame has impact-resistant, tempered, glass lens (3/16" thick). Door frame is fully gasketed with one-piece tubular silicone. **US. Patent No. D447,590. Canada Patent No. 94324.**

**FINISH** — Standard finish is dark bronze polyester powder finish. Additional architectural colors are available; see [www.lithonia.com/archcolors](http://www.lithonia.com/archcolors).

**OPTICAL SYSTEM** — Anodized segmented reflectors for superior uniformity and control. Reflectors attach with tool-less fasteners and are rotatable and interchangeable. Five full cutoff distributions available: Type II (roadway), Type III (asymmetric), Type IV (forward throw), Type IV (wide, forward throw) and Type V (symmetric square).

**ELECTRICAL SYSTEM** — Ballast: Constant-wattage autotransformer ballast standard. Super CWA pulse-start ballast required 200W, 320W and 350W (SCWA option). Ballast is copper-wound and 100% factory-tested. All ballasts are mounted on a removable power tray with tool-less latch and have positive locking disconnect plugs.

Socket: Porcelain, horizontally-mounted, mogul-base socket with copper alloy, nickel-plated screw shell and center contact.

**INSTALLATION** — Integral arm for pole or wall mounting. Optional mountings available.

**LISTING** — UL Listed (standard). CSA Certified (see Options). UL listed for 25°C ambient and wet locations. IP65 Rated.

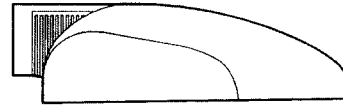
NOTE: Specifications subject to change without notice.

Catalog Number		<b>MIDTOWNE COMMONS DAYCARE</b>	
Notes	AS2 250M SR2 TB SPA SCWA DDB LPI (QTY 2)		Type
			<b>B</b>

# AERIS™

Architectural Area & Roadway Luminaires

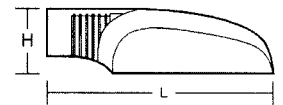
## AS2



**METAL HALIDE: 200W-400W**  
**HIGH PRESSURE SODIUM: 200W-400W**  
 10' to 35' Mounting

### Specifications

EPA: 1.2 ft<sup>2</sup>  
 Length: 28.6 (72.6)  
 Width: 17.1 (43.4)  
 Depth: 8.3 (21.0)  
 \*Weight: 40 lbs (18.2 kg)  
 \*Weight as configured in example below.



All dimensions are inches (centimeters) unless otherwise specified.

## ORDERING INFORMATION

For shortest lead times, configure product using **standard options (shown in bold)**.

Example: AS2 250M SR3 TB SPA LPI

AS2	250M	SR2	TB	SPA	SCWA	DDB	LPI	
Series	Wattage <sup>1</sup>		Voltage	Mounting	Ballast	Options	Finish <sup>13</sup>	Lamp <sup>14</sup>
<b>AS2</b>	<u>Metal halide</u>		120	<b>SPA Square pole mounting</b>	(blank) <b>Magnetic ballast</b>	<u>Shipped installed in fixture</u>	(blank) <b>Dark bronze</b>	<b>LPI Lamp included</b>
	200M <sup>2</sup>		208 <sup>5</sup>	<b>RPA Round pole mounting</b>	CWI Constant wattage isolated	SF Single fuse 120, 277, 347V	<b>DBL Black</b>	<b>L/LP Less lamp</b>
	<b>250M</b>		240 <sup>6</sup>	WBA Wall bracket (up or down) <sup>9</sup>	<b>Pulse Start</b>	DF Double fuse 208, 240, 480V	DGC Charcoal gray	
	320M <sup>2</sup>		277	ASKMA2 Mast arm adapter <sup>10</sup>	SCWA Super CWA pulse start ballast	PER NEMA twist-lock receptacle only (no photocontrol)	<b>DMB Medium bronze</b>	
	350M <sup>2,3</sup>		347	DCAS2 Decorative curved arm, square pole only <sup>10</sup>	NOTE: SCWA ballast must be selected to comply with California Title 20 metal halide regulations. SCWA also may be required to meet other states' regulations. Consult local authorities.	EC Emergency circuit <sup>11</sup>	<b>DNA Natural aluminum</b>	
	<b>400M<sup>3</sup></b>		480 <sup>5</sup>	DCAS2R Decorative curved arm, round pole only <sup>10</sup>		QRS Quartz restrrike system <sup>11</sup>	<b>DWH White</b>	
	<u>High pressure sodium<sup>4</sup></u>		TB <sup>6</sup>			HS Houseside shield (SR2, SR3, SR4W)	CR Corrosion resistance	
	200S		TB <sup>7</sup>			CSA CSA Certified		
	250S		23050HZ <sup>8</sup>			NOM NOM Certified		
	400S					<u>Shipped separately<sup>12</sup></u>		
Distribution								
SR2 Segmented type II roadway								
<b>SR3 Segmented type III asymmetric</b>								
<b>SR4SC Segmented type IV forward throw, sharp cutoff</b>								
<b>SR4W Segmented type IV wide, forward throw</b>								
SR5S Segmented type V square								

**Note:** Aeris™ has a unique drilling template that requires an Aeris drilling pattern to be specified when ordering poles. See example below.  
 Example: SSA 20 4C **DM19AS DDB**

**Aeris Drilling Pattern**

<b>DM19AS</b>	1 at 90 degrees
<b>DM28AS</b>	2 at 180 degrees
<b>DM29AS</b>	2 at 90 degrees
<b>DM39AS</b>	3 at 90 degrees
<b>DM49AS</b>	4 at 90 degrees
<b>DM32AS</b>	3 at 120 degrees (round poles only)

- NOTES:
- Lower wattages available. Consult factory.
  - Must be ordered with SCWA.
  - Must use reduced jacket lamp.
  - Not available with SCWA.
  - Must specify CWI for use in Canada.
  - Optional multi-tap ballast (120, 208, 240, 277V) (120, 277, 347V in Canada).
  - Optional 5-tap ballast (120, 208, 240, 277, 480V).
  - Consult factory for available wattage.<sup>5</sup>
  - Mounted in lens-up orientation, fixture is damp location listed.
  - Shipped separately.
  - Maximum allowance wattage lamp included.
  - May be ordered as an accessory.
  - Additional architectural colors available; see [www.lithonia.com/archcolors](http://www.lithonia.com/archcolors).
  - Must be specified.

### Accessories: Tenon Mounting Slipfitter

Order as separate catalog number. Must be used with round pole mounting (RPA).

Tenon O.D.	Number of fixtures					
	One	Two@180°	Two@90°	Three@120°	Three@90°	Four@90°
2-3/8"	AST20-190	AST20-280	AST20-290	AST20-320	AST20-390	AST20-490
2-7/8"	AST25-190	AST25-280	AST25-290	AST25-320	AST25-390	AST25-490
4"	AST35-190	AST35-280	AST35-290	AST35-320	AST35-390	AST35-490
AS2VG	Vandal guard					

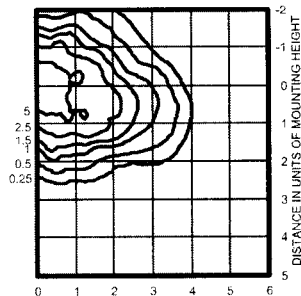


# AS2 Metal Halide, High Pressure Sodium Area Lighting

## Coefficient of Utilization Initial Footcandles

**AS2 400M SR3**

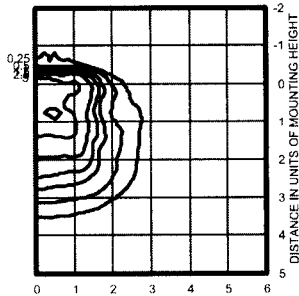
TEST NO: LTL10099



400W lamp, rated 32000 lumens. Footcandle values based on 20' mounting height.  
Classification: Type III, Medium, Full Cutoff

**AS2 400M SR4SC**

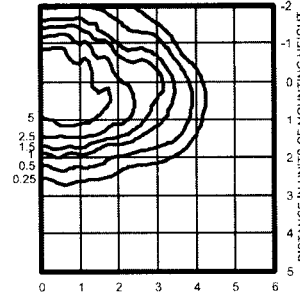
TEST NO: LTL10100



400W lamp, rated 32000 lumens. Footcandle values based on 20' mounting height.  
Classification: Unclassified (Type IV, Very Short), Full Cutoff

**AS2 400S SR3**

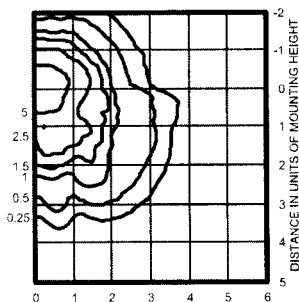
TEST NO: LTL10104



400W lamp, rated 50000 lumens. Footcandle values based on 20' mounting height.  
Classification: Type II, Medium, Full Cutoff

**AS2 400M SR4W**

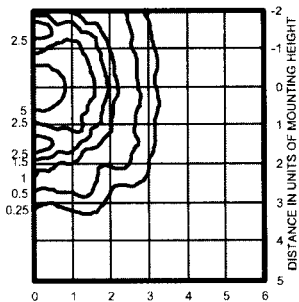
TEST NO: LTL10101



400W lamp, rated 32000 lumens. Footcandle values based on 20' mounting height.  
Classification: Type IV, Short, Full Cutoff

**AS2 400M SR5S**

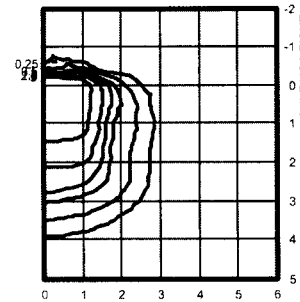
TEST NO: LTL10102



400W lamp, rated 32000 lumens. Footcandle values based on 20' mounting height.  
Classification: Unclassified (Type V), Full Cutoff

**AS2 400S SR4SC**

TEST NO: LTL10105



400W lamp, rated 50000 lumens. Footcandle values based on 20' mounting height.  
Classification: Unclassified (Type IV, Very Short), Full Cutoff

### NOTES:

- 1 Photometric data for other distributions can be accessed at [www.lithonia.com](http://www.lithonia.com).
- 2 For electrical characteristics consult technical data tab.
- 3 Tested to current IESNA and NEMA standards under stabilized laboratory conditions. Various operating factors can cause differences between laboratory and actual field measurements. Dimensions and specifications are based on the most current data and are subject to change.

### Mounting Height Correction Factor

(Multiply the fc level by the correction factor)

10 ft.	=	12.25
15 ft.	=	5.4
30 ft.	=	1.36
40ft.	=	0.77

$$\frac{\text{Existing Mounting Height}^2}{\text{New Mounting Height}^2} = \text{Correction Factor}$$



An Acuity Brands Company



## FEATURES & SPECIFICATIONS

### CONSTRUCTION

Weldable-grade, hot-rolled, commercial-quality carbon steel tubing with a minimum yield of 55,000 psi (11-gauge), 50,000 psi (7-gauge). Uniform wall thickness of .125" or .188". Shafts are one-piece with a longitudinal electric resistance weld. Uniformly square in cross-section with flat sides, small corner radii and excellent torsion. Available shaft widths are 4", 5" and 6".

Anchor base is fabricated from hot-rolled carbon steel plate that meets or exceeds a minimum yield strength of 36,000 psi. The anchor base is provided with slotted holes. Base cover is finished to match pole.

A handhole having nominal dimensions of 3" x 5" for all shafts. Included is a cover with attachment screws.

Top cap provided with all drill-mount poles.

Fasteners are high-strength galvanized zinc-plated or stainless steel.

**FINISH** — Dark bronze (DDB) polyester galvanized standard. Other architectural colors available. See [www.lithonia.com/archcolors](http://www.lithonia.com/archcolors).

**GROUNDING** — A nut holder located immediately inside the handhole rim is provided (ground bolt and nut provided by others).

**ANCHOR BOLTS** — Top portion of anchor bolt is galvanized per ASTM A-153. Made of steel rod having a minimum yield strength of 55,000 psi.

Catalog Number <b>MIDTOWNE COMMONS DAYCARE</b>	
Notes SSS 20 4C DM19AS DDB (QTY 8)	Type <b>A&amp;B</b>



Anchor Base Poles

# SSS

SQUARE STRAIGHT STEEL

## ORDERING INFORMATION

Lead times will vary depending on options selected. Consult with your sales representative.

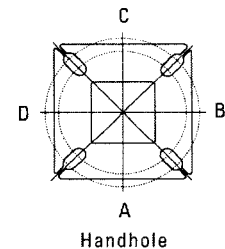
Example: SSS 20 5C DM19 DDB

SSS	20	4C	DM19AS		DDB
Shaft type SSS	Nominal shaft length 10 – 39 feet (see back page.)	Nominal shaft base size/ wall thickness (See back page.)	Mounting <sup>1</sup>	Options	Finish <sup>7</sup>
			<u>Tenon Mounting</u> PT Open top T20 2-3/8" O.D. (2" NPS) T25 2-7/8" O.D. (2-1/2" NPS) T30 3-1/2" O.D. (3" NPS) T35 4" O.D. (3-1/2" NPS)	<u>Shipped installed</u> L/AB Less anchor bolts VD Vibration damper TP Tamper proof Hxx Horizontal arm bracket (1 fixture) <sup>4,5</sup> FDLxx Festoon outlet less electrical <sup>4</sup> FGLxx Festoon GFI outlet less electrical <sup>4</sup> 12CPxx 1/2" coupling <sup>4</sup> 34CPxx 3/4" coupling <sup>4</sup> 1CPxx 1" coupling <sup>4</sup> 12NPxx 1/2" threaded nipple <sup>4</sup> 34NPxx 3/4" threaded nipple <sup>4</sup> 1NPxx 1" threaded nipple <sup>4</sup> HHxx Extra handhole <sup>4,6</sup>	DDB Dark bronze DWH White DBL Black DMB Medium bronze DNA Natural aluminum GALV Galvanized finish
			<u>Drill Mounting<sup>2</sup></u> DM19 1 at 90° DM28 2 at 180° DM28PL 2 at 180° with one side plugged DM29 2 at 90° DM39 3 at 90° DM49 4 at 90°		
			<u>AERIS/OMERO Drill Mounting<sup>2</sup></u> DM19AS 1 at 90° DM28AS 2 at 180° DM29AS 2 at 90° DM39AS 3 at 90° DM49AS 4 at 90°		
			<u>AERIS Suspend Drill Mounting<sup>2,3</sup></u> DM19AST_ 1 at 90° DM28AST_ 2 at 180° DM29AST_ 2 at 90° DM39AST_ 3 at 90° DM49AST_ 4 at 90°		
			<u>OMERO Suspend Drill Mounting<sup>2,3</sup></u> DM19MRT_ 1 at 90° DM28MRT_ 2 at 180° DM29MRT_ 2 at 90° DM39MRT_ 3 at 90° DM49MRT_ 4 at 90°		

### NOTES:

- When ordering tenon mounting and drill mounting for the same pole, follow this example: DM28/T20. The combination requires an extra handhole.
- The drilling template to be used for a particular luminaire depends on the luminaire that is used. Refer to the Technical Data Section of the Outdoor Binder for Drilling Templates.
- Insert "1" or "2" to designate fixture size; e.g. DM19AST2.
- Specify location and orientation when ordering option.  
For 1st "x": Specify the height in feet above base of pole.  
Example: 5ft = 5 and 20ft = 20  
For 2nd "x": Specify orientation from handhole (A,B,C,D)  
Refer to the Handhole Orientation diagram on this page.
- Horizontal arm is 18" x 2-3/8" O.D. tenon standard.
- Combination of tenon-top and drill mount requires extra handhole.
- Additional colors available; see [www.lithonia.com/archcolors](http://www.lithonia.com/archcolors). Powder finish standard.

## HANDHOLE ORIENTATION

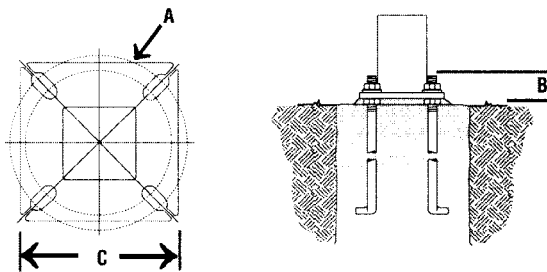




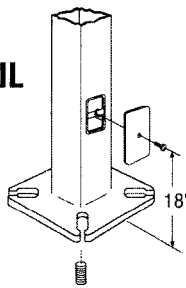
# SSS Square Straight Steel Poles

## TECHNICAL INFORMATION

Catalog Number	Nominal shaft length (feet)	Pole Shaft Size (in x in x ft)	Wall Thickness (inches)	Gauge	EPA (ft <sup>2</sup> ) with 1.3 gust						Bolt Circle (inches)	Bolt Size (in. x in. x in.)	Approximate ship weight (pounds)
					80 mph	Max. weight	90 mph	Max. weight	100 mph	Max. weight			
SSS 10 4C	10	4.0 x 10.0	0.125	11	30.6	765	23.8	595	18.9	473	8--9	3/4 x 18 x 3	75
SSS 12 4C	12	4.0 x 12.0	0.125	11	24.4	610	18.8	470	14.8	370	8--9	3/4 x 18 x 3	90
SSS 14 4C	14	4.0 x 14.0	0.125	11	19.9	498	15.1	378	11.7	293	8--9	3/4 x 18 x 3	100
SSS 16 4C	16	4.0 x 16.0	0.125	11	15.9	398	11.8	295	8.9	223	8--9	3/4 x 18 x 3	115
SSS 18 4C	18	4.0 x 18.0	0.125	11	12.6	315	9.2	230	6.7	168	8--9	3/4 x 18 x 3	125
SSS 20 4C	20	4.0 x 20.0	0.125	11	9.6	240	6.7	167	4.5	150	8--9	3/4 x 18 x 3	140
SSS 20 4G	20	4.0 x 20.0	0.188	7	16.5	415	12.25	310	9.3	240	8--9	3/4 x 30 x 3	198
SSS 20 5C	20	5.0 x 20.0	0.125	11	17.7	443	12.7	343	9.4	235	10--12	1 x 36 x 4	185
SSS 20 5G	20	5.0 x 20.0	0.188	7	28.1	703	21.4	535	16.2	405	10--12	1 x 36 x 4	265
SSS 25 4C	25	4.0 x 25.0	0.125	11	4.8	150	2.6	100	1.0	50	8--9	3/4 x 18 x 3	170
SSS 25 4G	25	4.0 x 25.0	0.188	7	10.8	270	7.7	188	5.4	135	8--9	3/4 x 30 x 3	245
SSS 25 5C	25	5.0 x 25.0	0.125	11	9.8	245	6.3	157	3.7	150	10--12	1 x 36 x 4	225
SSS 25 5G	25	5.0 x 25.0	0.188	7	18.0	350	12.6	350	9.0	250	10--12	1 x 36 x 4	320
SSS 30 4G	30	4.0 x 30.0	0.188	7	6.4	160	4.0	100	2.3	58	8--9	3/4 x 30 x 3	295
SSS 30 5C	30	5.0 x 30.0	0.125	11	4.7	150	2.0	50	--	--	10--12	1 x 36 x 4	265
SSS 30 5G	30	5.0 x 30.0	0.188	7	10.7	267	6.7	167	3.9	100	10--12	1 x 36 x 4	380
SSS 30 6G	30	6.0 x 30.0	0.188	7	15.7	392	10.2	257	6.4	160	11--13	1 x 36 x 4	520
SSS 35 5G	35	5.0 x 35.0	0.188	7	5.9	150	2.5	100	--	--	10--12	1 x 36 x 4	440
SSS 35 6G	35	6.0 x 35.0	0.188	7	9.5	237	5.0	150	1.8	50	11--13	1 x 36 x 4	540
SSS 39 6G	39	6.0 x 39.0	0.188	7	5.1	128	1.3	33	--	--	11--13	1 x 36 x 4	605



BASE DETAIL



Shaft Base Size	Bolt Circle A	Bolt Projection B	Base Square C	Anchor Bolt Description	Warehouse Anchor Description	Template Bolt Number
4"C	8-1/2"	2-3/4"-4"	8"	ABSSS-4C	AB18-0	PJ50004
4"G	8-1/2"	2-3/4"-4"	8"	ABSSS-4G	AB30-0	PJ50004
5"	10"-12"	3-3/8"-4"	11"	ABSSS-5	AB36-0	PJ50010
6"	11"-13"	3-3/8"-4"	12-1/2"	ABSSS-6	AB36-0	PJ50011

**IMPORTANT INSTALLATION NOTES:**

- Do not erect poles without having fixtures installed.
- Factory-supplied templates must be used when setting anchor bolts. Lithonia will not accept claim for incorrect anchorage placement due to failure to use factory template.
- If poles are stored outside, all protective wrapping must be removed immediately to prevent finish damage.
- Lithonia is not responsible for the foundation design.
- Installation requires grout to be packed under base to ensure full contact with foundation.

**IMPORTANT:**

- These specifications are intended for general purposes only. Lithonia reserves the right to change material or design, without prior notice, in a continuing effort to upgrade its products.



An Acuity Brands Company



## FEATURES & SPECIFICATIONS

### INTENDED USE

Ideal for parking areas, street lighting, walkways and car lots.

### CONSTRUCTION

Rugged, die-cast, soft corner aluminum housing with 0.12" nominal wall thickness. Die-cast door frame has impact-resistant, tempered, glass lens that is fully gasketed with one-piece tubular silicone.

### FINISH

Standard finish is dark bronze (DDB) polyester powder finish, with other architectural colors available.

### OPTICAL SYSTEM

Anodized, aluminum hydroformed reflectors: IES full cutoff distributions R2 (asymmetric), R3 (asymmetric), R4 (forward throw) and R5S (square) are interchangeable. High-performance anodized, segmented aluminum reflectors IES full cutoff distributions SR2 (asymmetric), SR3 (asymmetric) and SR4SC (forward throw, sharp cutoff). Segmented reflectors attach with tool-less fasteners and are rotatable and interchangeable.

### ELECTRICAL SYSTEM

Ballast: High reactance, high power factor for 70-150W. Constant wattage autotransformer for 175-400W. Metal halide 150W and below are standard with pulse-start ignitor technology; super CWA pulse-start ballast required for 200W, 320W and 350W (SCWA option). Ballast is copper-wound and 100% factory-tested.

Socket: Porcelain, horizontally oriented medium base socket for 70-150W and mogul base socket for 175W and above, with copper alloy, nickel-plated screw shell and center contact. UL listed 1500W, 600V.

### LISTING

UL Listed (standard). CSA Certified (see Options). UL listed for 25°C ambient and wet locations. IP65 rated in accordance with standard IEC 529.

Specifications subject to change without notice.

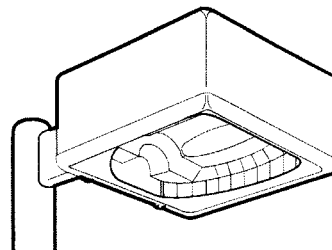
Catalog Number		<b>MIDTOWNE COMMONS DAYCARE</b>	
Notes	KAD 250M R4 TB SPD04 SCWA DDB HS (QTY 6)		Type
			<b>A</b>



Soft Square Lighting

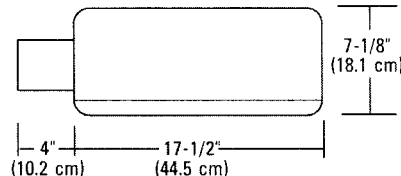
# KAD

**METAL HALIDE**  
70W-400W  
**HIGH PRESSURE SODIUM**  
70W-400W  
20' to 35' Mounting



### Specifications

EPA: 1.2 ft.<sup>2</sup>  
\*Weight: 35.9 lbs (16.28 kg)  
Length: 17-1/2" (44.5 cm)  
Width: 17-1/2" (44.5 cm)  
Depth: 7-1/8" (18.1 cm)  
\*Weight as configured in example below.



## ORDERING INFORMATION

For shortest lead times, configure product using **standard options (shown in bold)**.

Example: KAD 400M R3 TB SPD04 LPI

KAD	250M	R4	TB	SPD04	SCWA	HS	DDB	LPI
Series	Wattage		Voltage	Mounting	Ballast	Options		Lamp <sup>19</sup>
<b>KAD</b>	<b>Metal halide pressure sodium<sup>1</sup></b>		120	Type	(blank) <b>Magnetic ballast</b>	<b>Shipped installed in fixture</b>		<b>LPI Lamp included</b>
	70M <sup>1,2,3</sup>		208 <sup>7</sup>	<b>SPD</b> <b>Square pole</b>	CWI Constant wattage isolated	SF Single fuse 120, 277, 347V <sup>14</sup>		<b>L/LP Less lamp</b>
	100M <sup>1</sup>		240 <sup>7</sup>	RPD <b>Round pole</b>	<b>Pulse Start</b>	DF Double fuse 208, 240, 480 <sup>14</sup>		
	150M <sup>3</sup>		277	04 <b>4" arm</b>		PD Power tray <sup>15</sup>		
	175M <sup>1</sup>		347	06 <b>6" arm</b>		PER NEMA twist-lock receptacle only (no photocontrol)		
	200M <sup>4</sup>		480 <sup>7</sup>	09 <b>9" arm</b>		QRS Quartz restrike system <sup>16</sup>		
	250M		TB <sup>8</sup>	12 <b>12" arm</b>	SCWA Super CWA pulse start ballast	QRSTD QRS time delay <sup>10,16</sup>		
	400S		TBV <sup>9</sup>	WBD <b>Wall bracket</b>	NOTE: SCWA ballast must be selected to comply with California Title 20 metal halide regulations. SCWA also may be required to meet other states' regulations. Consult local authorities.	WTB Terminal wiring block <sup>15</sup>		
	320M <sup>4</sup>		23050HZ <sup>10</sup>	WWD <b>Wood pole or wall</b>		HS House-side shield		
	350M <sup>4</sup>			DAD12P Degree arm (pole) <sup>12</sup>		CSA CSA Certified		
	400M <sup>5</sup>			DAD12WB Degree arm (wall) <sup>12</sup>		<b>Shipped separately<sup>17</sup></b>		
Distribution				WBA Decorative wall bracket <sup>12,13</sup>		PE1 NEMA twist-lock PE (120, 208, 240V)		Finish <sup>18</sup>
				KMA Mast arm external fitter		PE3 NEMA twist-lock PE (347V)		(blank) <b>Dark bronze</b>
				KTMB Twin mounting bar		PE4 NEMA twist-lock PE (480V)		<b>DWH White</b>
						PE7 NEMA twist-lock PE (277V)		<b>DBL Black</b>
						SC Shortening cap for PER option		<b>DMB Medium bronze</b>
						VG Vandal guard		<b>DNA Natural aluminum</b>
						WG Wire guard		

### Hydroformed reflectors

- R2 IES type II asymmetric<sup>6</sup>
- R3 IES type III asymmetric<sup>6</sup>**
- R4 IES type IV forward throw<sup>9</sup>**
- R5S IES type V square

### Segmented reflectors

- SR2 IES type II asymmetric<sup>6</sup>
- SR3 IES type III asymmetric<sup>6</sup>
- SR4SC IES type IV forward throw

### NOTES:

- Not available with SCWA.
- Not available with 480V.
- Not available with TBV.
- Must be ordered with SCWA.
- Reduced jacket ED28 required for SR2, SR3 and SR4SC optics.
- House-side shield available.
- Must specify CWI for use in Canada.
- Optional multi-tap ballast (120, 208, 240, 277V; in Canada: 120, 277, 347V).
- Optional five-tap ballast (120, 208, 240, 277, 480V).
- Consult factory for available wattages.
- 9" arm is required when two or more luminaires are oriented on a 90° drilling pattern.
- Ships separately.
- Available with SPD04 and SPD09.
- Must specify voltage. N/A with TB.
- Only available with SR2, SR3, & SR4SC optics.
- Max allowable wattage lamp included.
- May be ordered as an accessory.
- See www.lithonia.com/archolors for additional color options.
- Must be specified.
- Must use RPD09

### Accessories

Order as separate catalog number.

### Tenon Mounting Slipfitter

Tenon O.D.	One	Two@180°	Two@90°	Three@120°	Three@90°	Four@90°
2-3/8"	T20-190	T20-280	T20-290 <sup>20</sup>	T20-320 <sup>20</sup>	T20-390 <sup>20</sup>	T20-490 <sup>20</sup>
2-7/8"	T25-190	T25-280	T25-290 <sup>20</sup>	T25-320	T25-390 <sup>20</sup>	T25-490 <sup>20</sup>
4"	T35-190	T35-280	T35-290 <sup>20</sup>	T35-320	T35-390 <sup>20</sup>	T35-490 <sup>20</sup>

KADVG Vandal guard  
KADWG Wire guard



Consistent with LEED<sup>®</sup> goals & Green Globes<sup>™</sup> criteria for light pollution reduction



## FEATURES & SPECIFICATIONS

### INTENDED USE

Ideal for parking areas, street lighting, walkways and car lots.

### CONSTRUCTION

Rugged, die-cast, soft corner aluminum housing with 0.12" nominal wall thickness. Die-cast door frame has impact-resistant, tempered, glass lens that is fully gasketed with one-piece tubular silicone.

### FINISH

Standard finish is dark bronze (DDB) polyester powder finish, with other architectural colors available.

### OPTICAL SYSTEM

Anodized, aluminum hydroformed reflectors: IES full cutoff distributions R2 (asymmetric), R3 (asymmetric), R4 (forward throw) and R5S (square) are interchangeable. High-performance anodized, segmented aluminum reflectors IES full cutoff distributions SR2 (asymmetric), SR3 (asymmetric) and SR4SC (forward throw, sharp cutoff). Segmented reflectors attach with tool-less fasteners and are rotatable and interchangeable.

### ELECTRICAL SYSTEM

Ballast: High reactance, high power factor for 70-150W. Constant wattage autotransformer for 175-400W. Metal halide 150W and below are standard with pulse-start ignitor technology; super CWA pulse-start ballast required for 200W, 320W and 350W (SCWA option). Ballast is copper-wound and 100% factory-tested.

Socket: Porcelain, horizontally oriented medium base socket for 70-150W and mogul base socket for 175W and above, with copper alloy, nickel-plated screw shell and center contact. UL listed 1500V, 600V.

### LISTING

UL Listed (standard). CSA Certified (see Options). UL listed for 25°C ambient and wet locations. IP65 rated in accordance with standard IEC 529.

Specifications subject to change without notice.

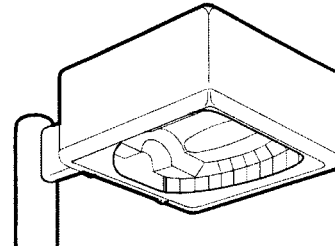
Catalog Number <b>MIDTOWNE COMMONS DAYCARE</b>	
Notes KAD 250M R2 TB SPD04 SCWA DDB (QTY 2)	Type <b>B</b>



Soft Square Lighting

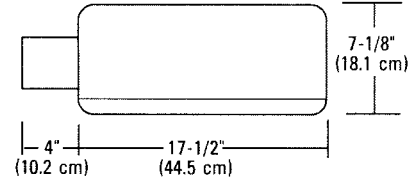
# KAD

**METAL HALIDE**  
70W-400W  
**HIGH PRESSURE SODIUM**  
70W-400W  
20' to 35' Mounting



### Specifications

EPA: 1.2 ft.<sup>2</sup>  
\*Weight: 35.9 lbs (16.28 kg)  
Length: 17-1/2" (44.5 cm)  
Width: 17-1/2" (44.5 cm)  
Depth: 7-1/8" (18.1 cm)  
\*Weight as configured in example below.



## ORDERING INFORMATION

For shortest lead times, configure product using **standard options (shown in bold)**.

Example: KAD 400M R3 TB SPD04 LPI

KAD	250M	R2	TB	SPD04	SCWA		DDB	LPI	
Series	Wattage		Voltage	Mounting		Ballast	Options		Lamp <sup>19</sup>
<b>KAD</b>	<b>Metal halide</b>	<b>High pressure sodium<sup>1</sup></b>	120	Type	Length <sup>11</sup>	(blank) <b>Magnetic ballast</b>	Shipped installed in fixture		<b>LPI Lamp included</b>
	70M <sup>1,2,3</sup>	70S <sup>2</sup>	208 <sup>7</sup>	<b>SPD</b> Square pole	<b>04</b> 4" arm	CWI Constant wattage isolated	SF	Single fuse 120, 277, 347V <sup>14</sup>	<b>L/LP Less lamp</b>
	100M <sup>1</sup>	100S	240 <sup>7</sup>	RPD Round pole	<b>06</b> 6" arm	<b>Pulse Start</b>	DF	Double fuse 208, 240, 480 <sup>14</sup>	Finish <sup>18</sup>
	150M <sup>3</sup>	150S	277	WBD Wall bracket	<b>09</b> 9" arm		PER	NEMA twist-lock receptacle only (no photocontrol)	
	<b>175M<sup>1</sup></b>	<b>150S<sup>2</sup></b>	347	WWD Wood pole or wall	12 12" arm	SCWA Super CWA pulse start ballast	QRS	Quartz restrike system <sup>16</sup>	(blank) <b>Dark bronze</b>
	200M <sup>4</sup>	<b>250S</b>	480 <sup>7</sup>	DAD12P Degree arm (pole) <sup>12</sup>		NOTE: SCWA ballast must be selected to comply with California Title 20 metal halide regulations. SCWA also may be required to meet other states' regulations. Consult local authorities.	QRSTD	QRS time delay <sup>10,16</sup>	<b>DWH White</b>
	<b>250M</b>	<b>400S</b>	TB <sup>8</sup>	DAD12WB Degree arm (wall) <sup>12</sup>			WTB	Terminal wiring block <sup>15</sup>	<b>DBL Black</b>
	320M <sup>4</sup>		TBV <sup>9</sup>	WBA Decorative wall bracket <sup>12,13</sup>			HS	House-side shield	<b>DMB Medium bronze</b>
	350M <sup>4</sup>		23050HZ <sup>10</sup>	KMA Mast arm external fitter			CSA	CSA Certified	<b>DNA Natural aluminum</b>
	<b>400M<sup>5</sup></b>			KTMB Twin mounting bar			Shipped separately <sup>17</sup>	PE1	NEMA twist-lock PE (120, 208, 240V)
Distribution							PE3	NEMA twist-lock PE (347V)	
Hydroformed reflectors							PE4	NEMA twist-lock PE (480V)	
	R2	IES type II asymmetric <sup>6</sup>					PE7	NEMA twist-lock PE (277V)	
	R3	IES type III asymmetric <sup>6</sup>					SC	Shortening cap for PER option	
	R4	IES type IV forward throw <sup>6</sup>					VG	Vandal guard	
	R5S	IES type V square					WG	Wire guard	
Segmented reflectors									
	SR2	IES type II asymmetric <sup>6</sup>	9	Optional five-tap ballast (120, 208, 240, 277, 480V).					
	SR3	IES type III asymmetric <sup>6</sup>	10	Consult factory for available wattages.					
	SR4SC	IES type IV forward throw	11	9" arm is required when two or more luminaires are oriented on a 90° drilling pattern.					
NOTES:									
1	Not available with SCWA.			12	Ships separately.				
2	Not available with 480V.			13	Available with SPD04 and SPD09.				
3	Not available with TBV.			14	Must specify voltage. N/A with TB.				
4	Must be ordered with SCWA.			15	Only available with R2, SR3, & SR4SC optics.				
5	Reduced jacket ED28 required for SR2, SR3 and SR4SC optics.			16	Max allowable wattage lamp included.				
6	House-side shield available.			17	May be ordered as an accessory.				
7	Must specify CWI for use in Canada.			18	See www.lithonia.com/archolors for additional color options.				
8	Optional multi-tap ballast (120, 208, 240, 277V; in Canada: 120, 277, 347V).			19	Must be specified.				
				20	Must use RPD09				
Accessories									
Order as separate catalog number.									
Tenon Mounting Slipfitter									
Number of fixtures									
Tenon O.D.	One	Two@180°	Two@90°	Three@120°	Three@90°	Four@90°			
2-3/8"	T20-190	T20-280	T20-290 <sup>20</sup>	T20-320 <sup>20</sup>	T20-390 <sup>20</sup>	T20-490 <sup>20</sup>			
2-7/8"	T25-190	T25-280	T25-290 <sup>20</sup>	T25-320	T25-390 <sup>20</sup>	T25-490 <sup>20</sup>			
4"	T35-190	T35-280	T35-290 <sup>20</sup>	T35-320	T35-390 <sup>20</sup>	T35-490 <sup>20</sup>			
KADVG Vandal guard									
KADWG Wire guard									



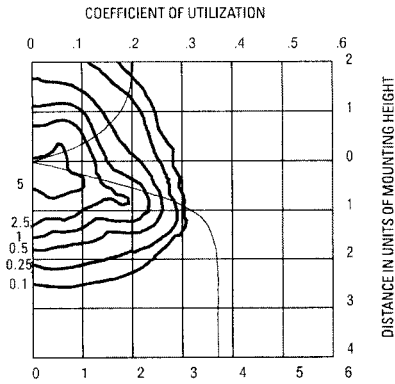
Consistent with LEED® goals & Green Globes™ criteria for light pollution reduction.



# KAD 400M Arm-mounted Soft Square Cutoff

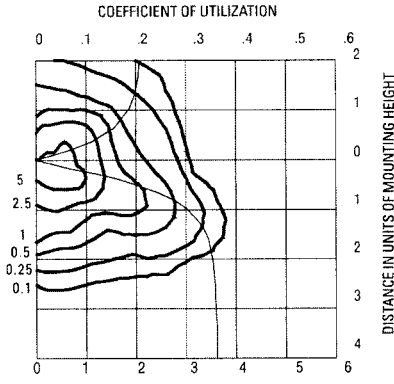
Coefficient of Utilization \_\_\_\_\_  
 Initial Footcandles \_\_\_\_\_

**KAD R2** Test no. 1193083101



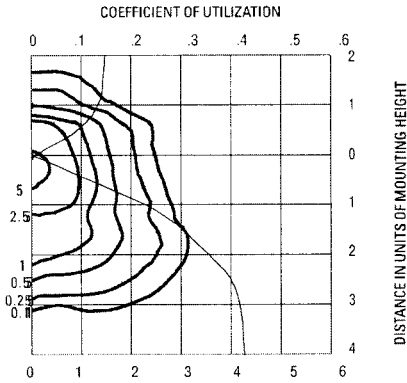
400W Metal Halide lamp, 32,000 rated lumens,  
 Footcandle values based on 30' mounting height,  
 Distribution Type II, cutoff.

**KAD R3** Test no. 1192040902



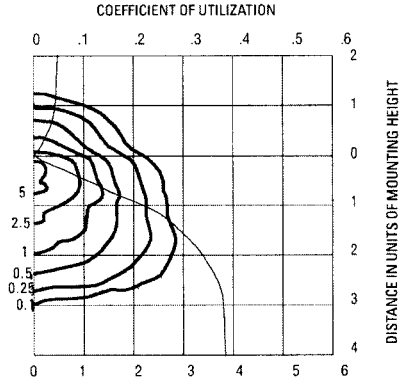
400W Metal Halide lamp, 32,000 rated lumens,  
 Footcandle values based on 30' mounting height,  
 Distribution Type III, cutoff.

**KAD R4** Test no. 1191110101



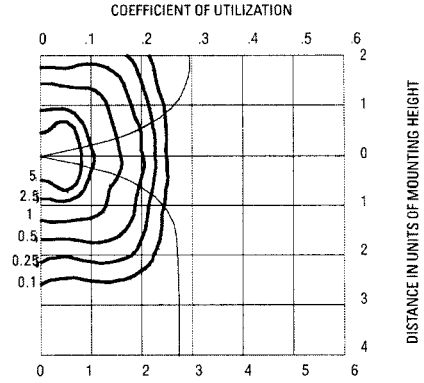
400W Metal Halide lamp, 32,000 rated lumens,  
 Footcandle values based on 30' mounting height,  
 Distribution Type IV, cutoff.

**KAD R4HS** Test no. 1192061101



400W Metal Halide lamp, 32,000 rated lumens,  
 Footcandle values based on 30' mounting height,  
 Distribution Type IV, cutoff.

**KAD R5S** Test no. 1193111901



400W Metal Halide lamp, 32,000 rated lumens,  
 Footcandle values based on 30' mounting height,  
 Distribution Type V, cutoff.

## Electrical Characteristics

Wattage/ballast	Primary voltage	Line current (Amps)		Primary dropout voltage	Input watts	Power factor (%)	Regulation Line V = Lamp lumens
		Start	Operating				
400CWA	120	2.50	4.00	55	455	90+	±10% = ±10%
Peak-lead	208	1.45	2.30	95			
Autotransformer	240	1.25	2.00	110			
	277	1.10	1.75	125			
	480	.73	1.00	225			

Tested to current IES and NEMA standards under stabilized laboratory conditions. Various operating factors can cause differences between laboratory data and actual field measurements. Dimensions and specifications on this sheet are based on the most current available data and are subject to change without notice.

## NOTES:

1 Photometric data for other distributions can be accessed from [www.lithonia.com](http://www.lithonia.com).

## Mounting Height Correction Factor

(Multiply the fc level by the correction factor)

25 ft. = 1.44

35 ft. = 0.73

40 ft. = .56

$$\left( \frac{\text{Existing Mounting Height}}{\text{New Mounting Height}} \right)^2 = \text{Correction Factor}$$





## FEATURES & SPECIFICATIONS

### CONSTRUCTION

Weldable-grade, hot-rolled, commercial-quality carbon steel tubing with a minimum yield of 55,000 psi (11-gauge), 50,000 psi (7-gauge). Uniform wall thickness of .125" or .188". Shafts are one-piece with a longitudinal electric resistance weld. Uniformly square in cross-section with flat sides, small corner radii and excellent torsion. Available shaft widths are 4", 5" and 6".

Anchor base is fabricated from hot-rolled carbon steel plate that meets or exceeds a minimum yield strength of 36,000 psi. The anchor base is provided with slotted holes. Base cover is finished to match pole.

A handhole having nominal dimensions of 3" x 5" for all shafts. Included is a cover with attachment screws.

Top cap provided with all drill-mount poles.

Fasteners are high-strength galvanized zinc-plated or stainless steel.

**FINISH** — Dark bronze (DDB) polyester powder standard. Other architectural colors available. See [www.lithonia.com/archcolors](http://www.lithonia.com/archcolors).

**GROUNDING** — A nut holder located immediately inside the handhole rim is provided (ground bolt and nut provided by others).

**ANCHOR BOLTS** — Top portion of anchor bolt is galvanized per ASTM A-153. Made of steel rod having a minimum yield strength of 55,000 psi.

Catalog Number		<b>MIDTOWNE COMMONS DAYCARE</b>	
Notes		Type	
SSS 20 4C DM19 DDB (QTY 8)		<b>A&amp;B</b>	



Anchor Base Poles

# SSS

**SQUARE STRAIGHT STEEL**

## ORDERING INFORMATION

Lead times will vary depending on options selected. Consult with your sales representative.

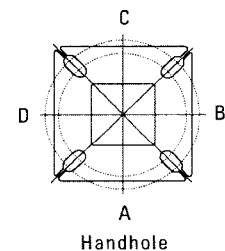
Example: SSS 20 5C DM19 DDB

SSS	20	4C	DM19		DDB
Shaft type	Nominal shaft length	Nominal shaft base size/wall thickness	Mounting <sup>1</sup>	Options	Finish <sup>7</sup>
SSS	10 – 39 feet (see back page.)	(See back page.)	<u>Tenon Mounting</u> PT Open top T20 2-3/8" O.D. (2" NPS) T25 2-7/8" O.D. (2-1/2" NPS) T30 3-1/2" O.D. (3" NPS) T35 4" O.D. (3-1/2" NPS) <u>Drill Mounting<sup>2</sup></u> DM19 1 at 90° DM28 2 at 180° DM28PL 2 at 180° with one side plugged DM29 2 at 90° DM39 3 at 90° DM49 4 at 90° <u>AERIS/OMERO Drill Mounting<sup>2</sup></u> DM19AS 1 at 90° DM28AS 2 at 180° DM29AS 2 at 90° DM39AS 3 at 90° DM49AS 4 at 90° <u>AERIS Suspend Drill Mounting<sup>2,3</sup></u> DM19AST_ 1 at 90° DM28AST_ 2 at 180° DM29AST_ 2 at 90° DM39AST_ 3 at 90° DM49AST_ 4 at 90° <u>OMERO Suspend Drill Mounting<sup>2,3</sup></u> DM19MRT_ 1 at 90° DM28MRT_ 2 at 180° DM29MRT_ 2 at 90° DM39MRT_ 3 at 90° DM49MRT_ 4 at 90°	<u>Shipped installed</u> L/AB Less anchor bolts VD Vibration damper TP Tamper proof Hxx Horizontal arm bracket (1 fixture) <sup>4,5</sup> FDLxx Festoon outlet less electrical <sup>4</sup> FGLxx Festoon GFI outlet less electrical <sup>4</sup> 12CPxx 1/2" coupling <sup>4</sup> 34CPxx 3/4" coupling <sup>4</sup> 1CPxx 1" coupling <sup>4</sup> 12NPxx 1/2" threaded nipple <sup>4</sup> 34NPxx 3/4" threaded nipple <sup>4</sup> 1NPxx 1" threaded nipple <sup>4</sup> HHxx Extra handhole <sup>4,6</sup>	DDB Dark bronze DWH White DBL Black DMB Medium bronze DNA Natural aluminum GALV Galvanized finish

### NOTES:

- When ordering tenon mounting and drill mounting for the same pole, follow this example: DM28/T20. The combination requires an extra handhole.
- The drilling template to be used for a particular luminaire depends on the luminaire that is used. Refer to the Technical Data Section of the Outdoor Binder for Drilling Templates.
- Insert "1" or "2" to designate fixture size; e.g. DM19AST2.
- Specify location and orientation when ordering option.  
 For 1st "x": Specify the height in feet above base of pole.  
*Example: 5ft = 5 and 20ft = 20*  
 For 2nd "x": Specify orientation from handhole (A,B,C,D)  
*Refer to the Handhole Orientation diagram on this page.*
- Horizontal arm is 18" x 2-3/8" O.D. tenon standard.
- Combination of tenon-top and drill mount requires extra handhole.
- Additional colors available; see [www.lithonia.com/archcolors](http://www.lithonia.com/archcolors). Powder finish standard.

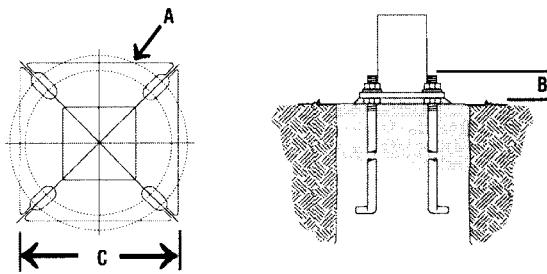
## HANDHOLE ORIENTATION



# SSS Square Straight Steel Poles

## TECHNICAL INFORMATION

Catalog Number	Nominal shaft length (feet)	Pole Shaft Size (in x in x ft)	Wall Thickness (inches)	Gauge	EPA (ft <sup>2</sup> ) with 1.3 gust						Bolt Circle (inches)	Bolt Size (in. x in. x in.)	Approximate ship weight (pounds)
					80 mph	Max. weight	90 mph	Max. weight	100 mph	Max. weight			
SSS 10 4C	10	4.0 x 10.0	0.125	11	30.6	765	23.8	595	18.9	473	8--9	3/4 x 18 x 3	75
SSS 12 4C	12	4.0 x 12.0	0.125	11	24.4	610	18.8	470	14.8	370	8--9	3/4 x 18 x 3	90
SSS 14 4C	14	4.0 x 14.0	0.125	11	19.9	498	15.1	378	11.7	293	8--9	3/4 x 18 x 3	100
SSS 16 4C	16	4.0 x 16.0	0.125	11	15.9	398	11.8	295	8.9	223	8--9	3/4 x 18 x 3	115
SSS 18 4C	18	4.0 x 18.0	0.125	11	12.6	315	9.2	230	6.7	168	8--9	3/4 x 18 x 3	125
SSS 20 4C	20	4.0 x 20.0	0.125	11	9.6	240	6.7	167	4.5	150	8--9	3/4 x 18 x 3	140
SSS 20 4G	20	4.0 x 20.0	0.188	7	16.5	415	12.25	310	9.3	240	8--9	3/4 x 30 x 3	198
SSS 20 5C	20	5.0 x 20.0	0.125	11	17.7	443	12.7	343	9.4	235	10--12	1 x 36 x 4	185
SSS 20 5G	20	5.0 x 20.0	0.188	7	28.1	703	21.4	535	16.2	405	10--12	1 x 36 x 4	265
SSS 25 4C	25	4.0 x 25.0	0.125	11	4.8	150	2.6	100	1.0	50	8--9	3/4 x 18 x 3	170
SSS 25 4G	25	4.0 x 25.0	0.188	7	10.8	270	7.7	188	5.4	135	8--9	3/4 x 30 x 3	245
SSS 25 5C	25	5.0 x 25.0	0.125	11	9.8	245	6.3	157	3.7	150	10--12	1 x 36 x 4	225
SSS 25 5G	25	5.0 x 25.0	0.188	7	18.0	350	12.6	350	9.0	250	10--12	1 x 36 x 4	320
SSS 30 4G	30	4.0 x 30.0	0.188	7	6.4	160	4.0	100	2.3	58	8--9	3/4 x 30 x 3	295
SSS 30 5C	30	5.0 x 30.0	0.125	11	4.7	150	2.0	50	--	--	10--12	1 x 36 x 4	265
SSS 30 5G	30	5.0 x 30.0	0.188	7	10.7	267	6.7	167	3.9	100	10--12	1 x 36 x 4	380
SSS 30 6G	30	6.0 x 30.0	0.188	7	15.7	392	10.2	257	6.4	160	11--13	1 x 36 x 4	520
SSS 35 5G	35	5.0 x 35.0	0.188	7	5.9	150	2.5	100	--	--	10--12	1 x 36 x 4	440
SSS 35 6G	35	6.0 x 35.0	0.188	7	9.5	237	5.0	150	1.8	50	11--13	1 x 36 x 4	540
SSS 39 6G	39	6.0 x 39.0	0.188	7	5.1	128	1.3	33	--	--	11--13	1 x 36 x 4	605



**BASE DETAIL**

Shaft Base Size	Bolt Circle A	Bolt Projection B	Base Square C	Anchor Bolt Description	Warehouse Anchor Description	Template Bolt Number
4\"C	8-1/2"	2-3/4"-4"	8"	ABSSS-4C	AB18-0	PJ50004
4\"G	8-1/2"	2-3/4"-4"	8"	ABSSS-4G	AB30-0	PJ50004
5"	10"-12"	3-3/8"-4"	11"	ABSSS-5	AB36-0	PJ50010
6"	11"-13"	3-3/8"-4"	12-1/2"	ABSSS-6	AB36-0	PJ50011

**IMPORTANT INSTALLATION NOTES:**

- Do not erect poles without having fixtures installed.
- Factory-supplied templates must be used when setting anchor bolts. Lithonia will not accept claim for incorrect anchorage placement due to failure to use factory template.
- If poles are stored outside, all protective wrapping must be removed immediately to prevent finish damage.
- Lithonia is not responsible for the foundation design.
- Installation requires grout to be packed under base to ensure full contact with foundation.

**IMPORTANT:**

- These specifications are intended for general purposes only. Lithonia reserves the right to change material or design, without prior notice, in a continuing effort to upgrade its products.



An Acuity Brands Company

**Lithonia Lighting  
Outdoor**

One Lithonia Way, Conyers, GA 30012  
Phone: 770-922-9000 Fax: 770-918-1209  
www.lithonia.com



**KITLESON LANDSCAPE INC.**  
 10486 CTR DR (608) 437-4427  
 Blue Mounds, WI 53517 (608) 437-4427

**MIDTOWNE COMMONS DAYCARE**  
 Mansion Hill Ave., Madison, WI 53711  
 11-20-08 08-1091 JPK

Not for construction without written consent of Kittleson Landscape Inc.

Bioretention area, to be seeded with native seed mix

Bailey Redtwig Dogwood (6)

White Pine (3)

Oak, Swamp White

Seed mix Prairie Nursery Detention  
 Basin Wet Prairie Mix or similar

Oak, Swamp White

Sumac, 'low gro' (12)  
 Planted in bark

'Autumn Magic' Chokeberry (3)

Sumac, 'low gro' (10)  
 Planted in bark

'Autumn Magic' Chokeberry (3)

'State Street' Maple

Parking

Red Maple

Sumac, 'low gro' (10)  
 Planted in bark

'Autumn Jazz' Viburnum (10)

Juniper Virginea (8)

'Wahoo' Euonymous (3)

Sumac, 'low gro' (24)  
 Planted in bark

Red Maple (2)

Bark Mulch

Condensers

Bark Mulch

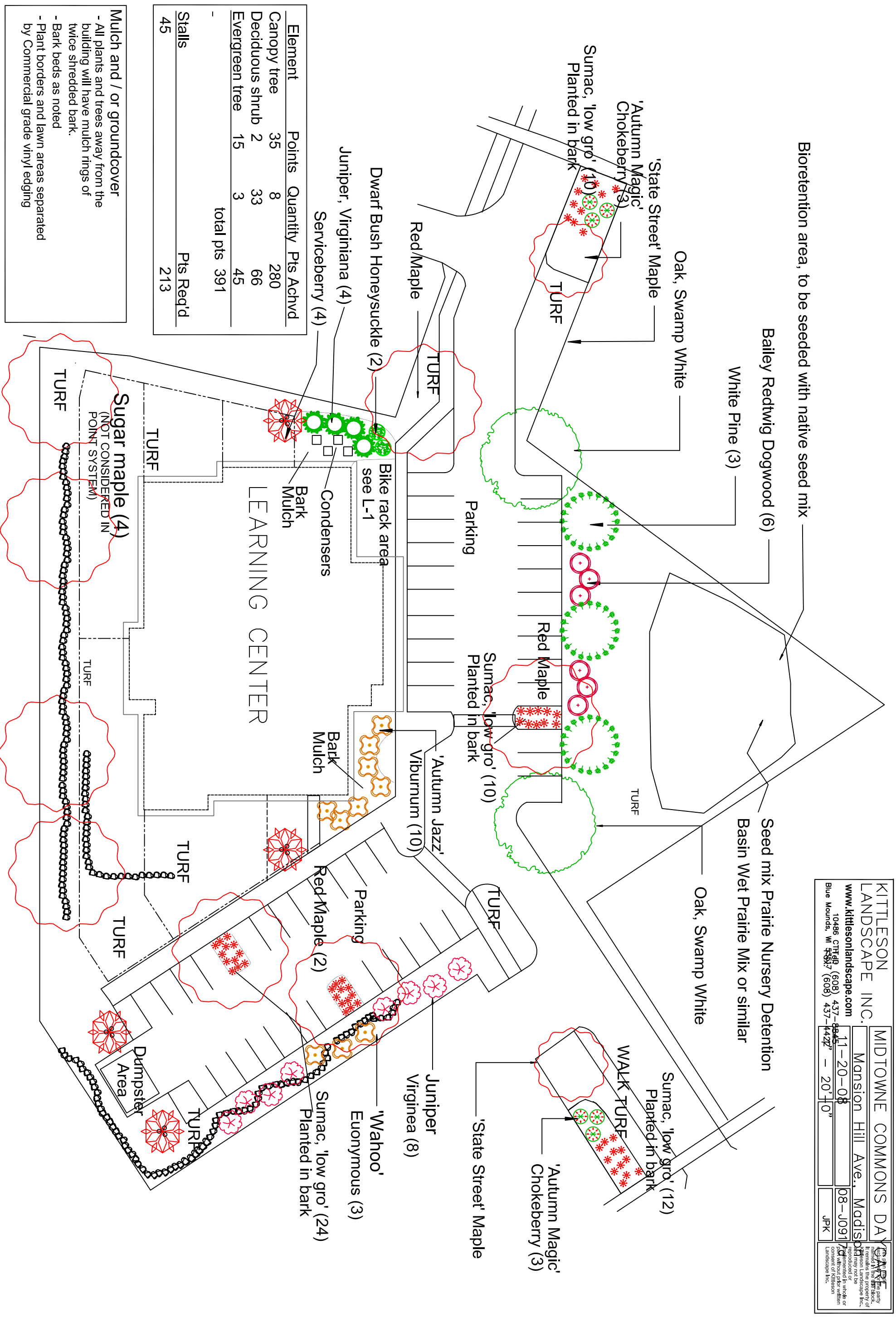
Bike rack area see L-1

LEARNING CENTER

Sugar maple (4)  
 (NOT CONSIDERED IN POINT SYSTEM)

Element	Points	Quantity	Pts Achvd
Canopy tree	35	8	280
Deciduous shrub	2	33	66
Evergreen tree	15	3	45
		total pts	391
Stalls	45		Pts Req'd 213

**Mulch and / or groundcover**  
 - All plants and trees away from the building will have mulch rings of twice shredded bark.  
 - Bark beds as noted  
 - Plant borders and lawn areas separated by Commercial grade vinyl edging



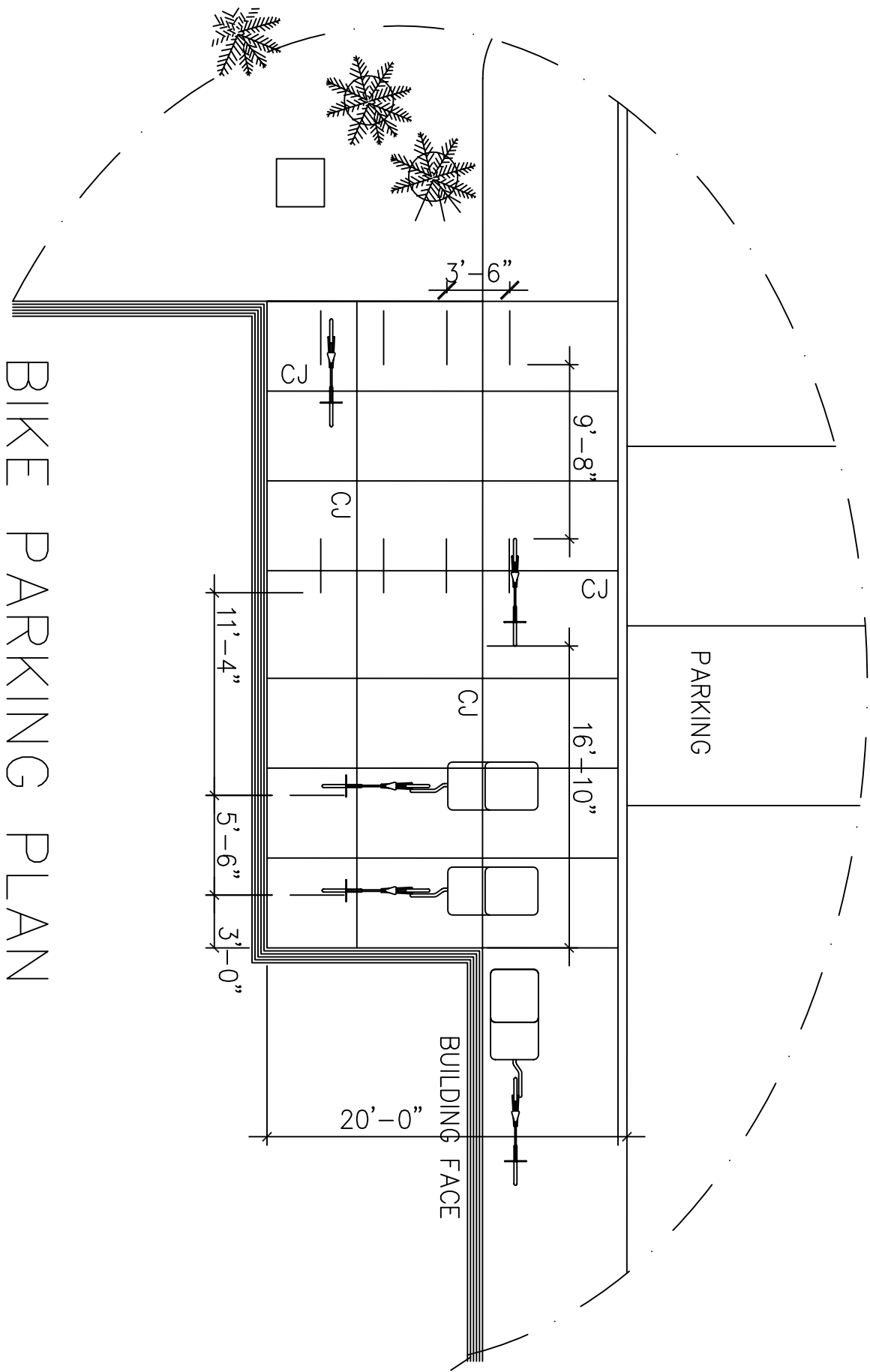
**architects**  
 701 ridge.st.madison.wi.53705

Owner: L87, LLC.  
 625 North Segoe Road  
 Suite 101  
 Madison Wisconsin 53705

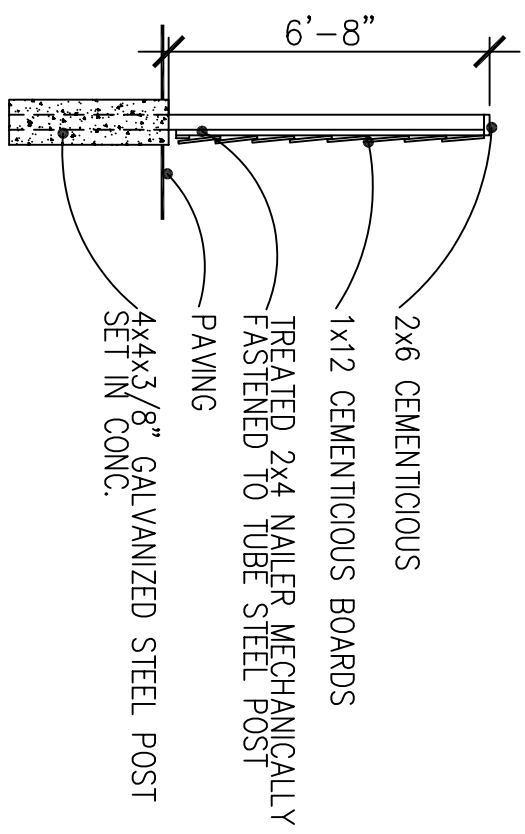
Midtowne Commons Daycare  
 Lot 87  
 8133 Mansion Hill Avenue  
 Madison Wisconsin 53711

Landscape Plan  
 SCALE: 1" = 30' - 0"

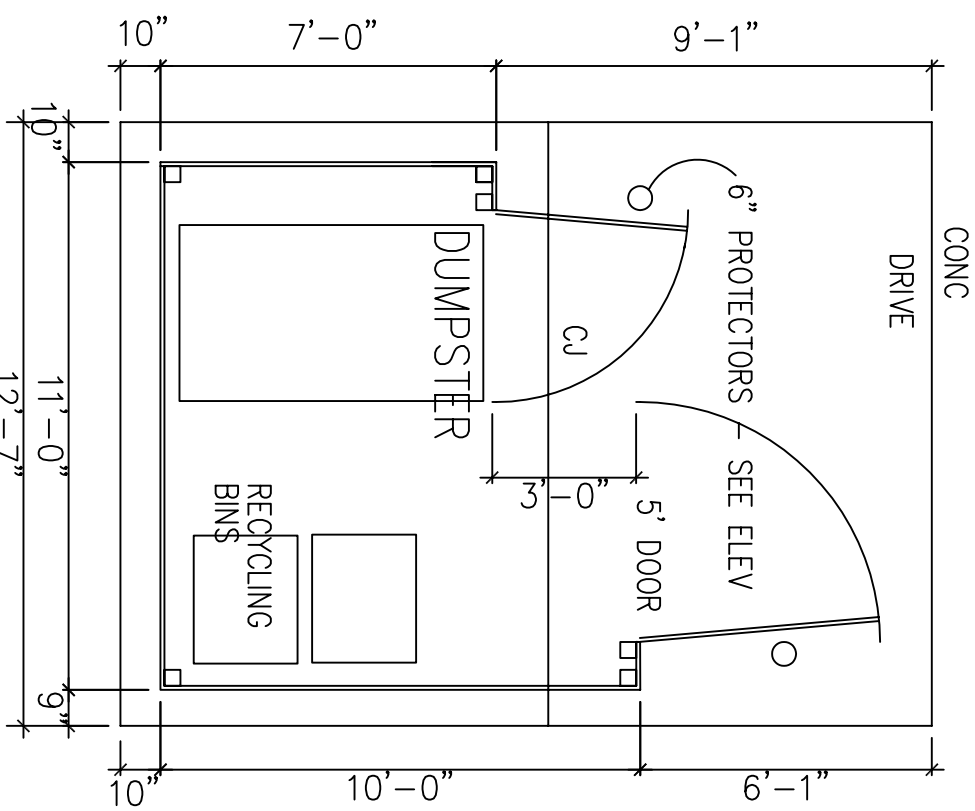
D A T E  
 12.10.08  
 JOB NO.  
 6104  
 SHEET  
 L-2



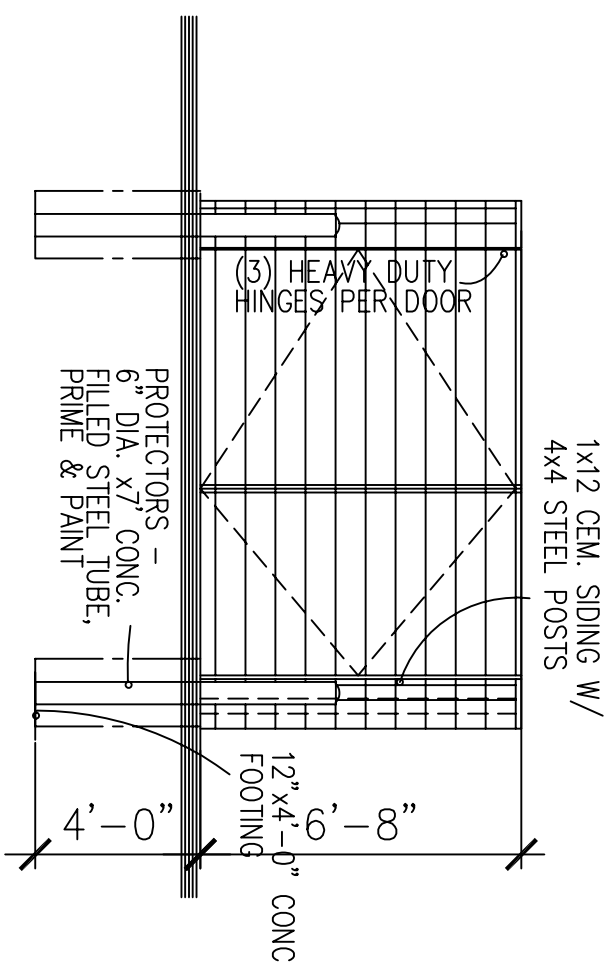
BIKE PARKING PLAN



SECTION



DUMPSTER PLAN

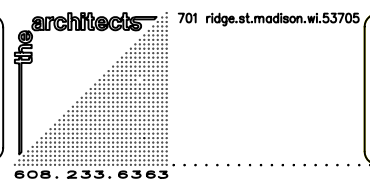


ELEVATION

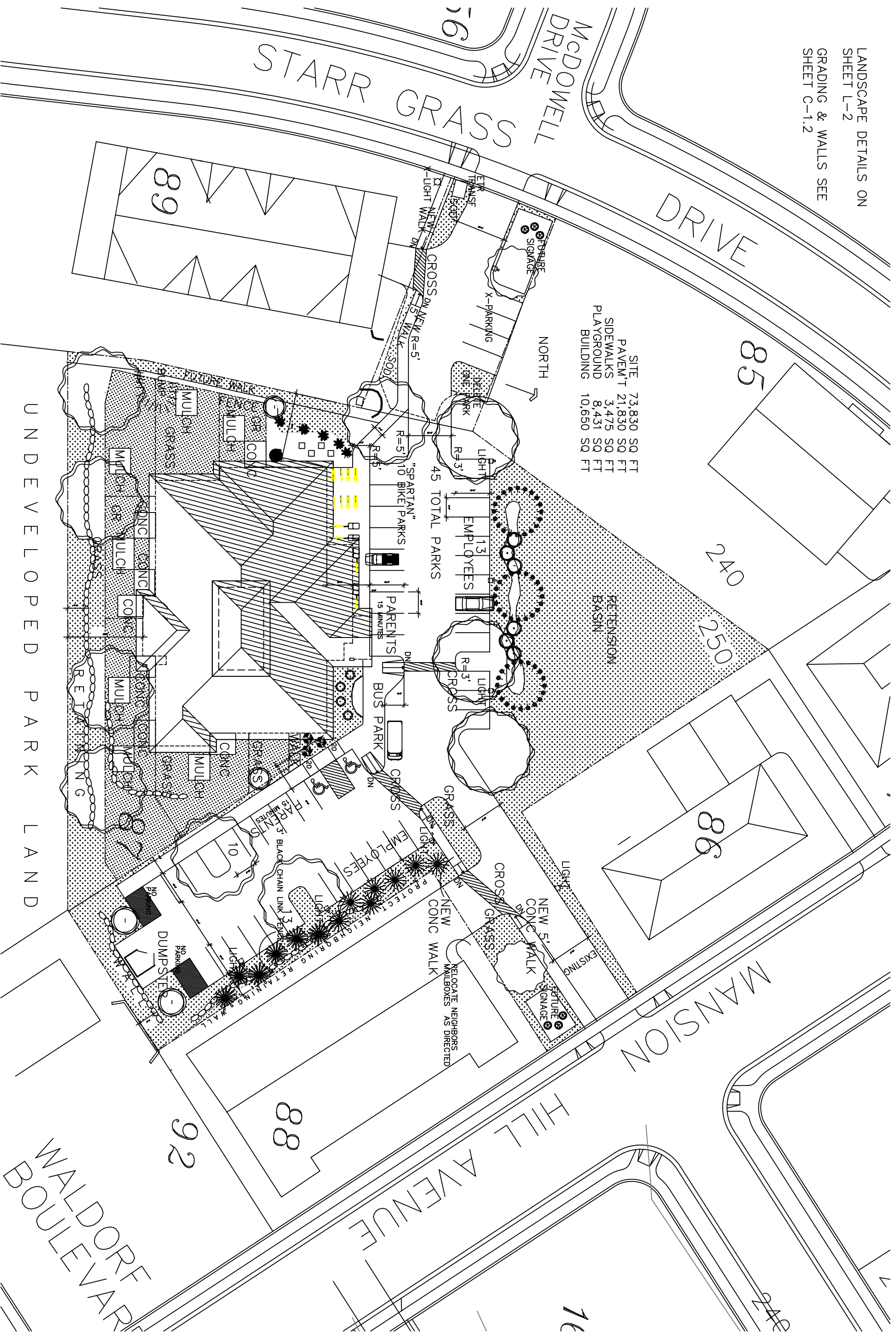
Site Plan  
SCALE: 1" = 20' - 0"

Midtowne Commons Daycare  
Lot 87  
8133 Mansion Hill Avenue  
Madison Wisconsin 53711

Owner: L87, LLC.  
625 North Segoe Road  
Suite 101  
Madison Wisconsin 53705



D A T E  
12.9.08  
JOB NO.  
6104  
SHEET  
L-1.5



SITE	73,830	SQ FT
PAVEM'T	21,830	SQ FT
SIDEWALKS	3,475	SQ FT
PLAYGROUND	8,431	SQ FT
BUILDING	10,650	SQ FT

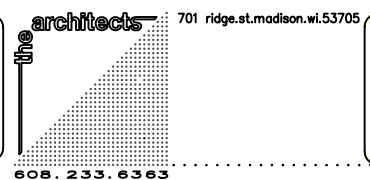
45 TOTAL PARKS

UNDEVELOPED PARK LAND

Site Plan  
SCALE: 1" = 20' - 0"

Midtowne Commons Daycare  
Lot 87  
8133 Mansion Hill Avenue  
Madison Wisconsin 53711

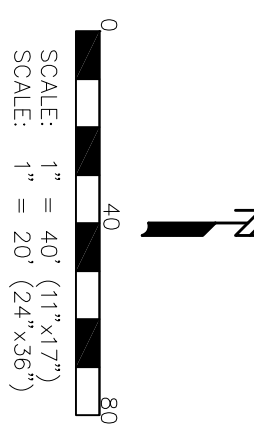
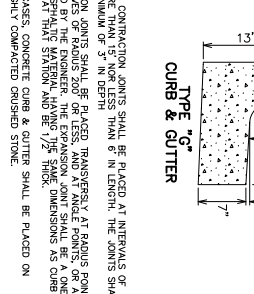
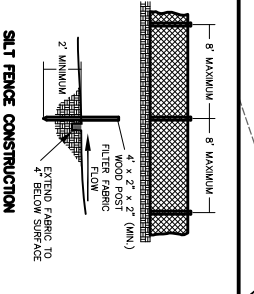
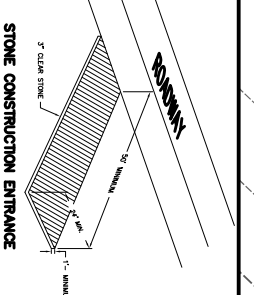
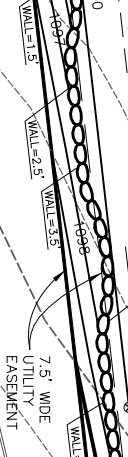
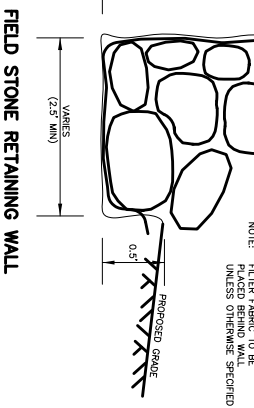
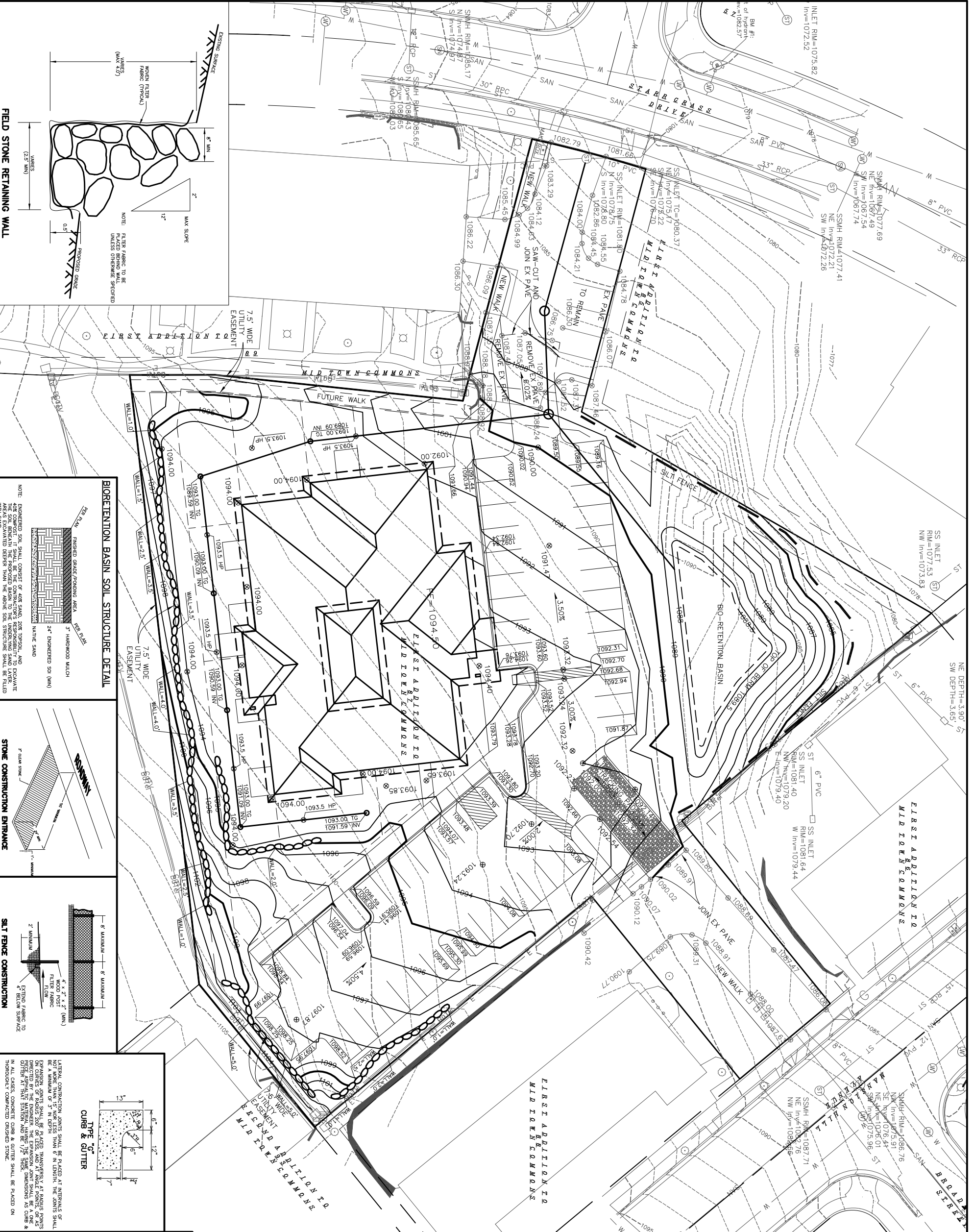
Owner: L87, LLC.  
625 North Segoe Road  
Suite 101  
Madison Wisconsin 53705



D A T E  
12.5.08  
JOB NO.  
6104  
SHEET  
L-1

2005





**GENERAL NOTES:**  
 STONE CONSTRUCTION ENTRANCE SHALL BE INSTALLED PRIOR TO ANY GRADING OPERATIONS AND MAINTAINED UNTIL GRAVEL BASE IS INSTALLED.  
 SILT FENCE AND ALL OTHER EROSION CONTROL MEASURES SHALL BE INSTALLED PRIOR TO ANY GRADING OPERATIONS AND MAINTAINED THROUGHOUT THE CONSTRUCTION PHASE OF THIS PROJECT.  
 TRACKED MATERIAL TO ADJACENT STREETS SHALL BE COLLECTED AT THE END OF EACH WORK DAY OR AS REQUIRED BY THE VILLAGE OF COTTAGE GROVE.  
 BIO-RETENTION BASINS SHALL BE EXCAVATED AND USED AS SEDIMENT TRAPS DURING CONSTRUCTION. UPON COMPLETION OF CONSTRUCTION AND SITE STABILIZATION, THE BASINS SHALL BE OVER-EXCAVATED 2 FEET (OR UNTIL THE NATIVE SANDY SOIL IS REACHED) IN ORDER TO ALLOW FOR FERTILIZER APPLICATION. THE RECOMMENDED SOIL FERTILIZER SHALL BE 10-10-10 (N-P-K) WITH 3 INCHES OF EMPLOYED. 3 INCHES OF HARDWOOD MULCH SHALL BE ADDED ON TOP OF THE ENGINEERED SOIL.  
 ALL AREAS WHICH ARE NOT PAVED SHALL RECEIVE A MINIMUM OF 4\"/>

**LEGEND:**  
 ⊗ 900.00 = PROPOSED SPOT ELEVATION  
 ⊗ 900.0 = EXISTING SPOT ELEVATION  
 ○ ○ ○ ○ ○ = RETAINING WALL  
 ○ ○ ○ ○ ○ = STONE CONSTRUCTION ENTRANCE  
 — — — — — = SILT FENCE  
 → = DIRECTION OF FLOW

**INSTALL EROSION CONTROL MEASURES:**  
 BEGIN CONSTRUCTION:  
 GRAVEL BASE COURSE INSTALLATION COMPLETED:

**NOTE:** AN EROSION CONTROL PERMIT EXTENSION SHALL BE FILED WITH THE CITY OF MADISON PRIOR TO THE GRAVEL BASE COURSE INSTALLATION DATE INDICATED ABOVE. IF THIS DATE WILL NOT BE MET, THE CONTRACTOR SHALL NOTIFY THE ENGINEER IF AN EXTENSION IS NECESSARY.

**FOR THE FIRST SIX WEEKS AFTER THE INITIAL STABILIZATION OF A DISTURBED AREA, PROVISIONS SHALL BE MADE FOR WATERING WHENEVER MORE THAN SEVEN DAYS OF DRY WEATHER ELAPSE. EROSION AND SEDIMENT CONTROL MEASURES SHALL BE INSPECTED AND REPAIRED BY THE CONTRACTOR, IF NECESSARY, EVERY 7 DAYS AND WITHIN 24 HOURS AFTER A PRECIPITATION EVENT OF 0.3\"/>**

**MULCH SHOULD BE APPLIED SO THAT THE SOIL SURFACE IS FULLY COVERED. MULCHING APPLICATION SHALL CONSIST OF STRAW AT A MIN. RATE OF 1.5 TONS PER ACRE. MULCH MUST BE CHIPPED.**

**PUMPING OF WATER FROM FOUNDATION AREA DURING CONSTRUCTION SHALL NOT EXCEED A RATE OF 70 GALLONS PER HOUR PER FOOT OF FOUNDATION PER LINEAL FOOT. MULCHING APPLICATION SHALL BE STOPPED AND A CLOTH/VEGETATION SOCK SHALL BE PLACED ON THE OUTLET END OF THE PIPE TO CONTROL SEDIMENT LOSS.**

**ALL EROSION AND SEDIMENT CONTROL MEASURES AND STABILIZATION SHALL BE MAINTAINED AND REPAIRED WITHIN 24 HOURS AFTER A 0.5 INCH OR GREATER RAINFALL EVENT. ALL NECESSARY MAINTENANCE SHALL FOLLOW WITHIN 24 HOURS OF THE INSPECTION.**

**FOR THE FIRST SIX WEEKS AFTER THE INITIAL STABILIZATION OF A DISTURBED AREA, PROVISIONS SHALL BE MADE FOR WATERING WHENEVER MORE THAN SEVEN DAYS OF DRY WEATHER ELAPSE. EROSION AND SEDIMENT CONTROL MEASURES SHALL BE INSPECTED AND REPAIRED BY THE CONTRACTOR, IF NECESSARY, EVERY 7 DAYS AND WITHIN 24 HOURS AFTER A PRECIPITATION EVENT OF 0.3\"/>**

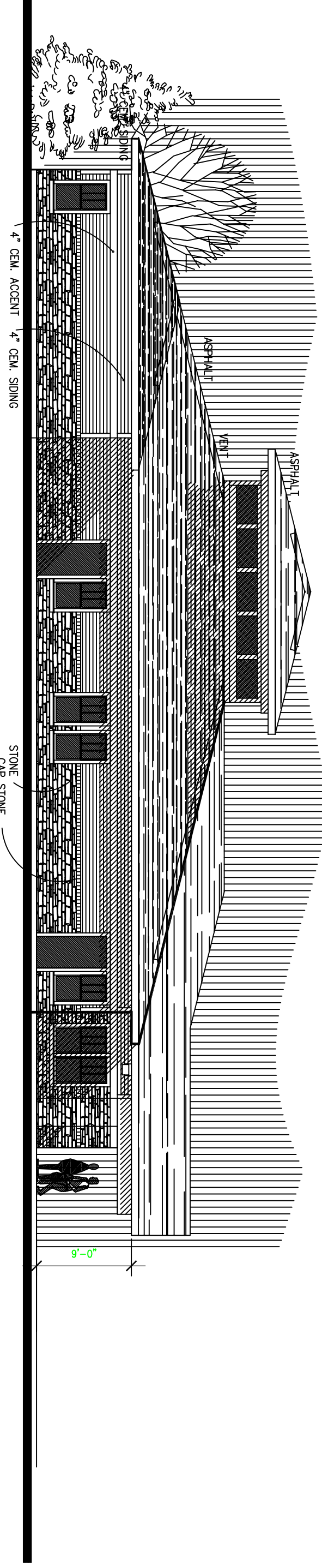
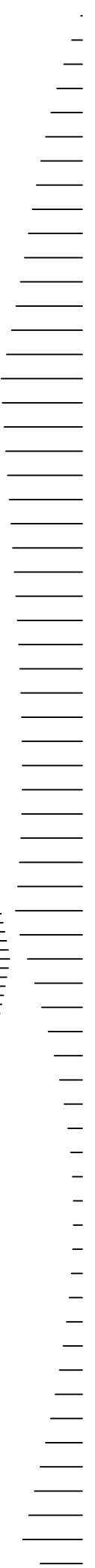
**DEVELOPER SHALL REPAIR/REPLACE ANY SIDEWALK, CURB, OR PAVEMENT DAMAGED DURING CONSTRUCTION OR AS DETERMINED NECESSARY BY THE CITY ENGINEER.**

**GRASS AREAS SHALL RECEIVE FERTILIZER, SEED, AND MULCH TO BE APPLIED TO THE SOIL SURFACE AT THE RATE OF 10 POUNDS OF DOT SPECIFICATIONS AND SHALL BE APPLIED AT A RATE OF FOUR POUNDS PER 1,000 SQUARE FEET. FERTILIZER SHALL MEET THE FOLLOWING REQUIREMENTS THAT FOLLOW: NITROGEN, NOT LESS THAN 10%, PHOSPHORUS, NOT LESS THAN 10%, POTASSIUM, NOT LESS THAN 10%. FERTILIZER SHOULD BE APPLIED AT THE RATE OF SEVEN POUNDS PER 1,000 SQUARE FEET.**

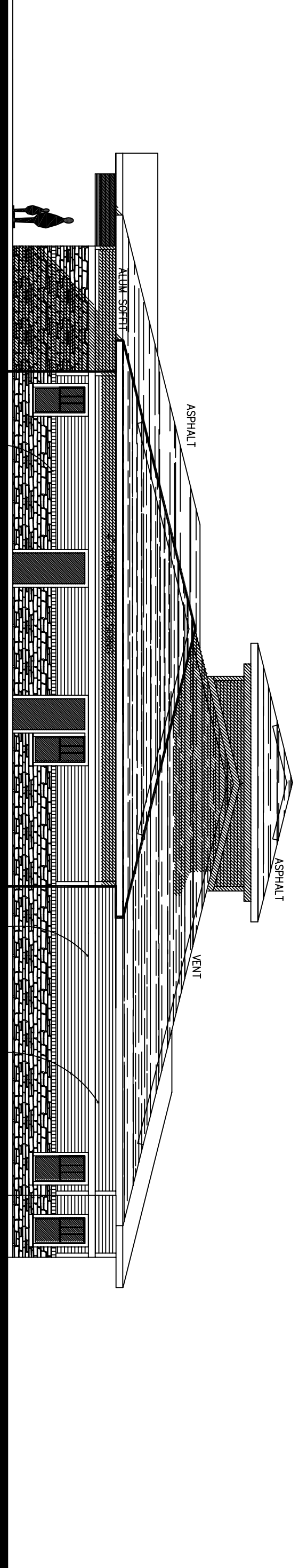
**MULCH SHOULD BE APPLIED SO THAT THE SOIL SURFACE IS FULLY COVERED. MULCHING APPLICATION SHALL CONSIST OF STRAW AT A MIN. RATE OF 1.5 TONS PER ACRE. MULCH MUST BE CHIPPED.**

**PUMPING OF WATER FROM FOUNDATION AREA DURING CONSTRUCTION SHALL NOT EXCEED A RATE OF 70 GALLONS PER HOUR PER FOOT OF FOUNDATION PER LINEAL FOOT. MULCHING APPLICATION SHALL BE STOPPED AND A CLOTH/VEGETATION SOCK SHALL BE PLACED ON THE OUTLET END OF THE PIPE TO CONTROL SEDIMENT LOSS.**

**ALL EROSION AND SEDIMENT CONTROL MEASURES AND STABILIZATION SHALL BE MAINTAINED AND REPAIRED WITHIN 24 HOURS AFTER A 0.5 INCH OR GREATER RAINFALL EVENT. ALL NECESSARY MAINTENANCE SHALL FOLLOW WITHIN 24 HOURS OF THE INSPECTION.**

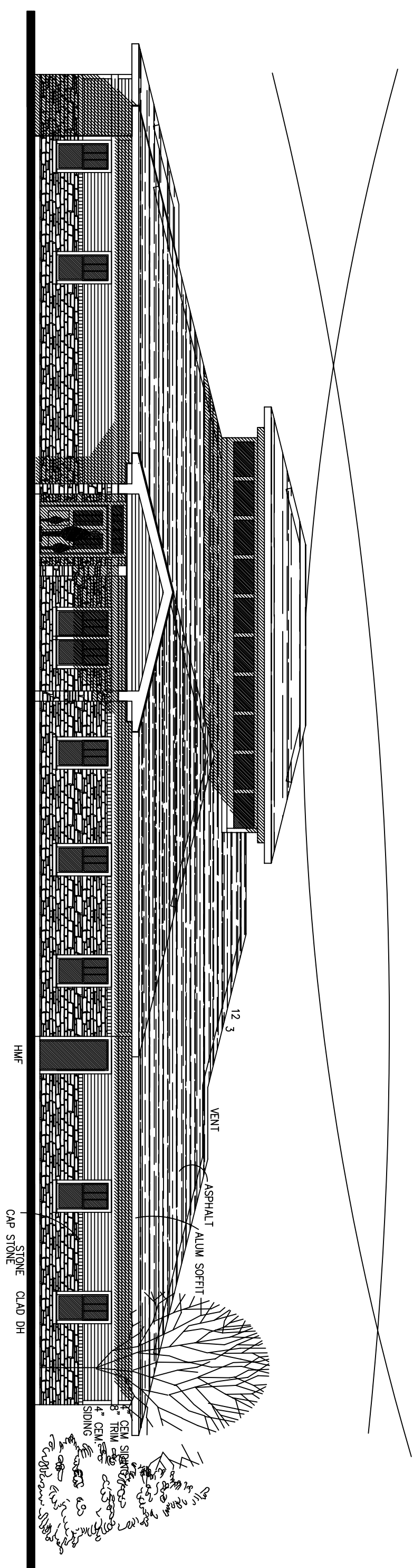


LEFT SIDE ELEVATION

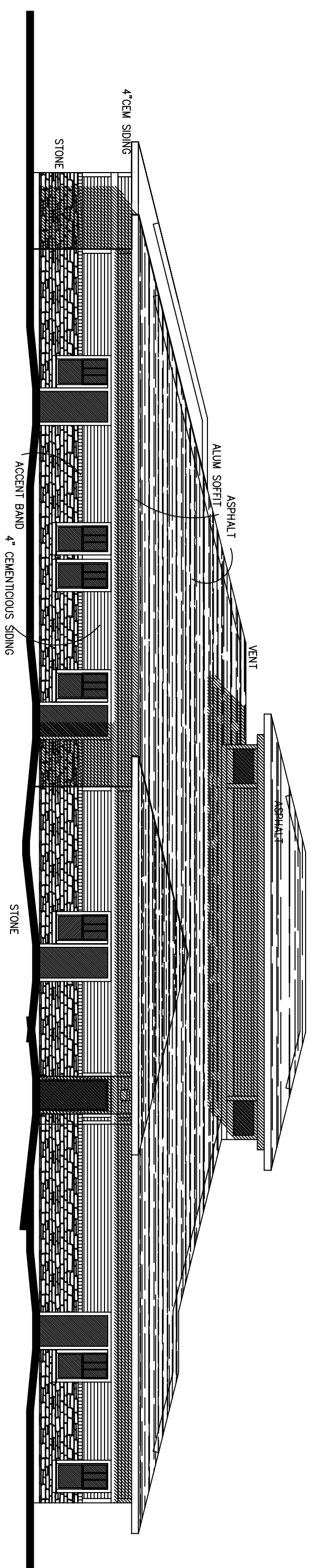


RIGHT SIDE ELEVATION

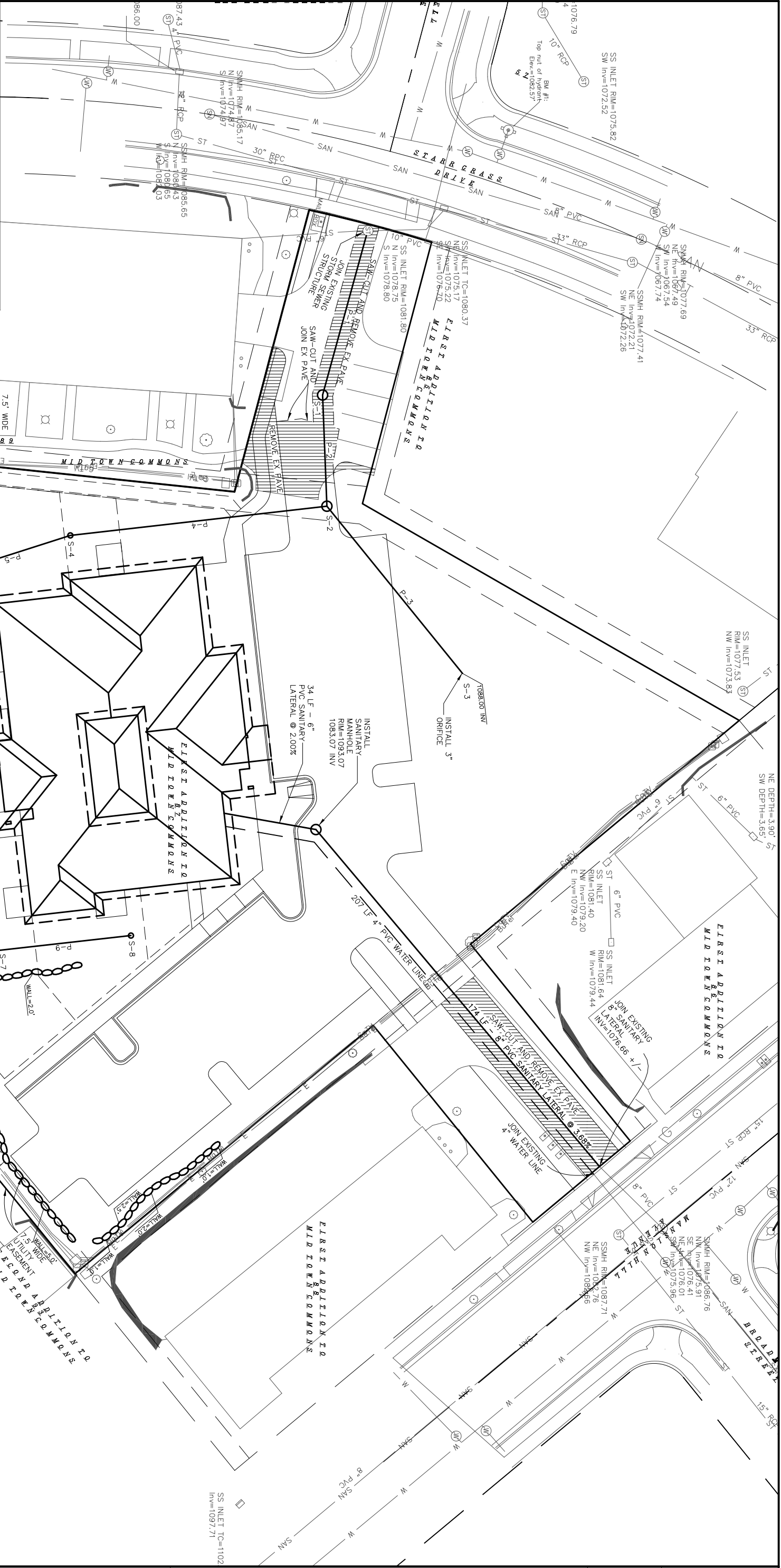
FRONT ELEVATION



REAR ELEVATION







**GENERAL NOTES:**

CONTRACTOR SHALL OBTAIN NECESSARY CONNECTION AND EXCAVATION PERMITS FROM CITY ENGINEERING PRIOR TO WORK COMMENCING.  
 CONTRACTOR SHALL FIELD VERIFY THE SIZE, TYPE, LOCATION, AND ELEVATION OF EXISTING UTILITIES.  
 THE CONTRACTOR SHALL NOTIFY ALL AREA UTILITY COMPANIES PRIOR TO COMMENCING WORK UNDER THIS CONTRACT AND REQUEST THAT UNDERGROUND UTILITIES BE LOCATED IN ACCORDANCE WITH SECTION 82.07(2) OF THE WISCONSIN STATUTES. ANY DISCREPANCIES WITH THE RECORD DRAWINGS OR FIELD CONDITIONS SHALL BE REPORTED TO THE CITY OF MADISON PRIOR TO THE START OF WORK. THE CONTRACTOR SHALL FIELD VERIFY THE SIZE, TYPE, LOCATION, AND ELEVATION OF EXISTING UTILITIES.  
 ALL WORK WITHIN THE PUBLIC RIGHT OF WAY SHALL BE CONSTRUCTED PER THE CITY OF MADISON STANDARD SPECIFICATIONS FOR PUBLIC WORKS CONSTRUCTION.  
 UNLESS OTHERWISE INDICATED, WATER AND SANITARY SEWER LATERALS AND STORM SEWER ENDS SHALL BE MARKED WITH A 4" X 4" POST EXTENDING FOUR FEET (4') BELOW GROUND AND THREE FEET (3') ABOVE GROUND. WHERE BOTH THE WATER AND SANITARY SEWER ENDS ARE TO BE MARKED AT THE SAME LOCATION, A COMMON 4" X 4" POST MAY BE USED TO MARK THE ENDS.  
 ALL SANITARY SEWER, WATER MAIN, AND STORM SEWER SHALL BE CONSTRUCTED PER THE CITY OF MADISON STANDARD SPECIFICATIONS FOR PUBLIC WORKS CONSTRUCTION.  
 PRIVATE STORM SEWER SHALL BE ADS N-12.  
 PRIVATE SANITARY SEWER AND LATERALS SHALL BE PVC (ASTM D3034-SDR35).  
 ALL SANITARY LATERALS ARE TO BE AT A SLOPE OF 1/8" FT UNLESS OTHERWISE SPECIFIED.  
 COORDINATE WORK WITH BUILDING PLUMBING CONTRACTOR(S).

