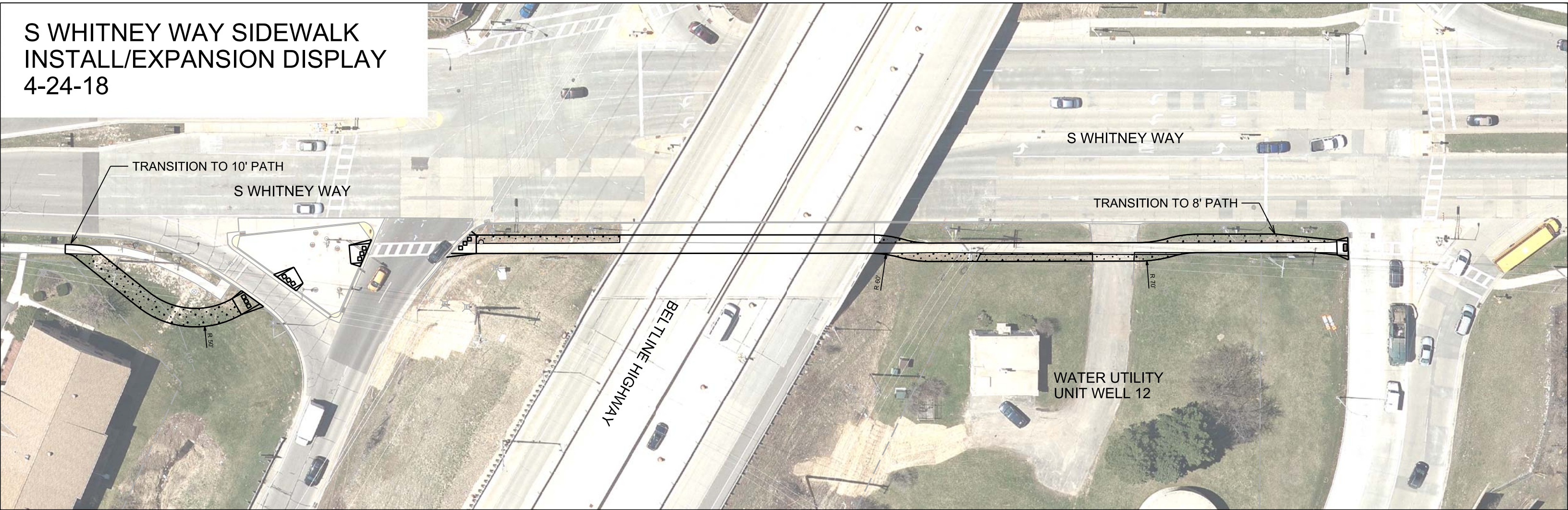


S WHITNEY WAY SIDEWALK  
INSTALL/EXPANSION DISPLAY  
4-24-18



TRANSITION TO 10' PATH

S WHITNEY WAY

S WHITNEY WAY

TRANSITION TO 8' PATH

BELTLINE HIGHWAY

WATER UTILITY  
UNIT WELL 12

R 50'

R 60'

R 70'