







PLAN NORTH
1 LOCATION MAP
 1/4" = 1'-0"



2 FENCE EXAMPLE
 NOT TO SCALE

No.	Description	Date

WORKING DRAFT BEER
 COMPANY

BREW PUB

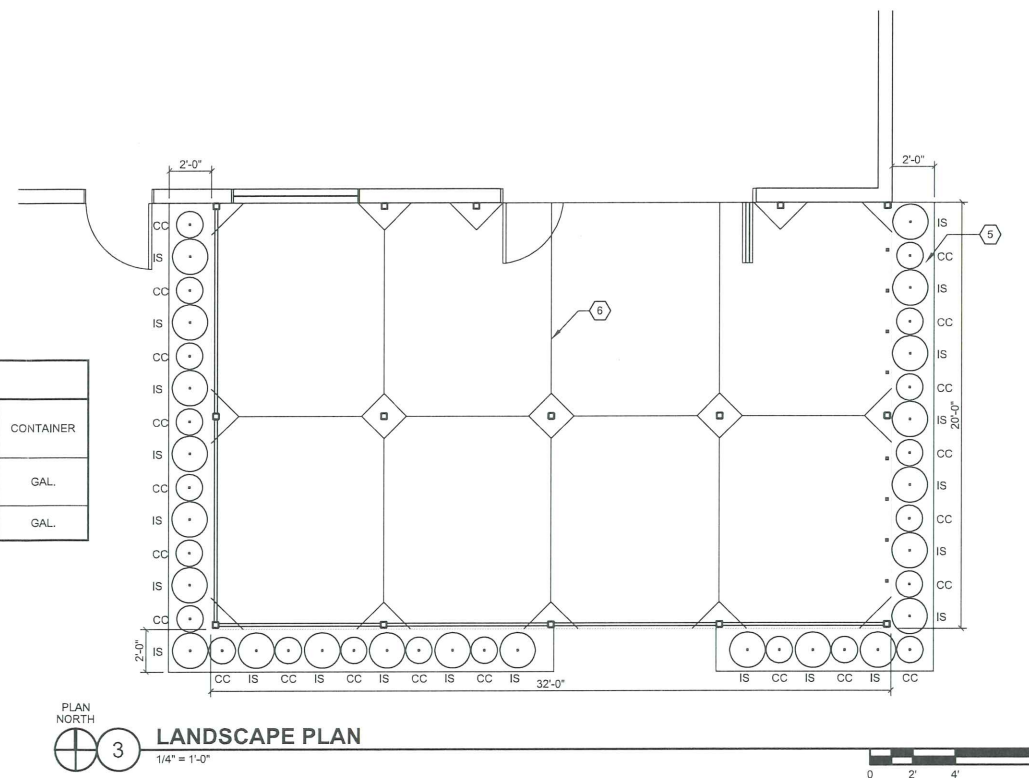
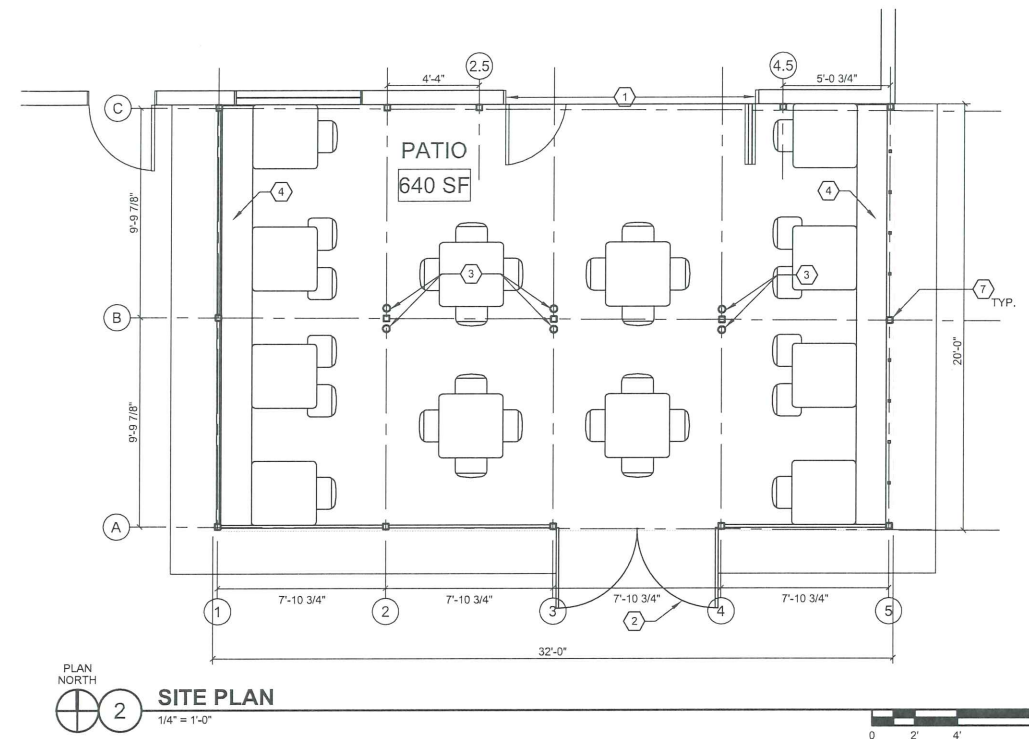
1129 E. WILSON ST
 MADISON, WI 53703

LOCATION PLAN AND
 FENCE EXAMPLE

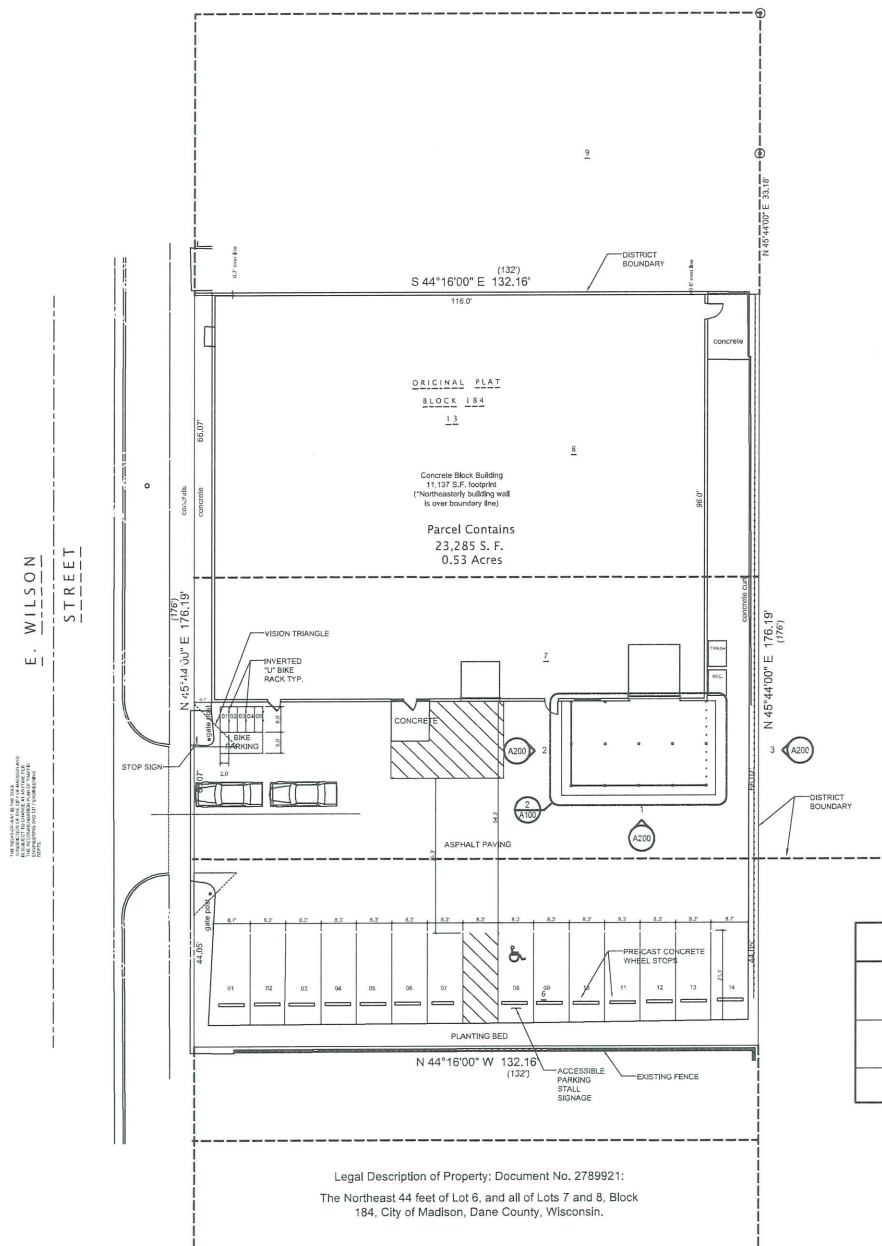
CONDITIONAL USE PERMIT	
Project number	WOR-17-01
Date	03/21/2018

A001

- KEYED NOTES:**
- 1 OPERABLE GLASS PARTITION
 - 2 MAINTENANCE ACCESS GATE
 - 3 POLE MOUNTED LED DOWNLIGHT
 - 4 WOOD BENCH
 - 5 PLANTING BED - REMOVE EXISTING FILL DOWN TO A DEPTH OF 18" AND REPLACE W/ NEW GARDEN BED TOPSOIL. COVER WITH 3" HARDWOOD MULCH AFTER PLANTING
 - 6 CONTROL JOINTS IN CONCRETE SLAB
 - 7 PAINTED STEEL COL. 3 1/2"X3 1/2"X114"



PLANT LEGEND			
CODE	NAME	SIZE WHEN GROWN	CONTAINER
CC	CAREX COMOSA (BRISTLY SEDGE)	1'-3" TALL X 1'-3" WIDE	GAL.
IS	I. SIBERILA (SIBERIAN IRIS)	40" TALL X 40" WIDE	GAL.



No.	Description	Date

WORKING DRAFT BEER COMPANY

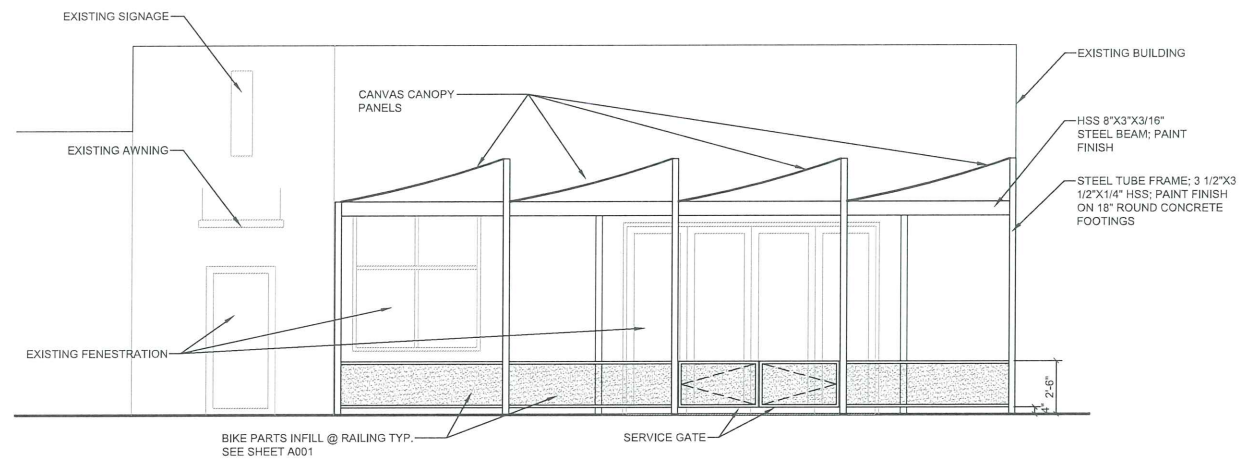
BREW PUB

1129 E. WILSON ST
MADISON, WI 53703

SITE AND LANDSCAPE PLAN

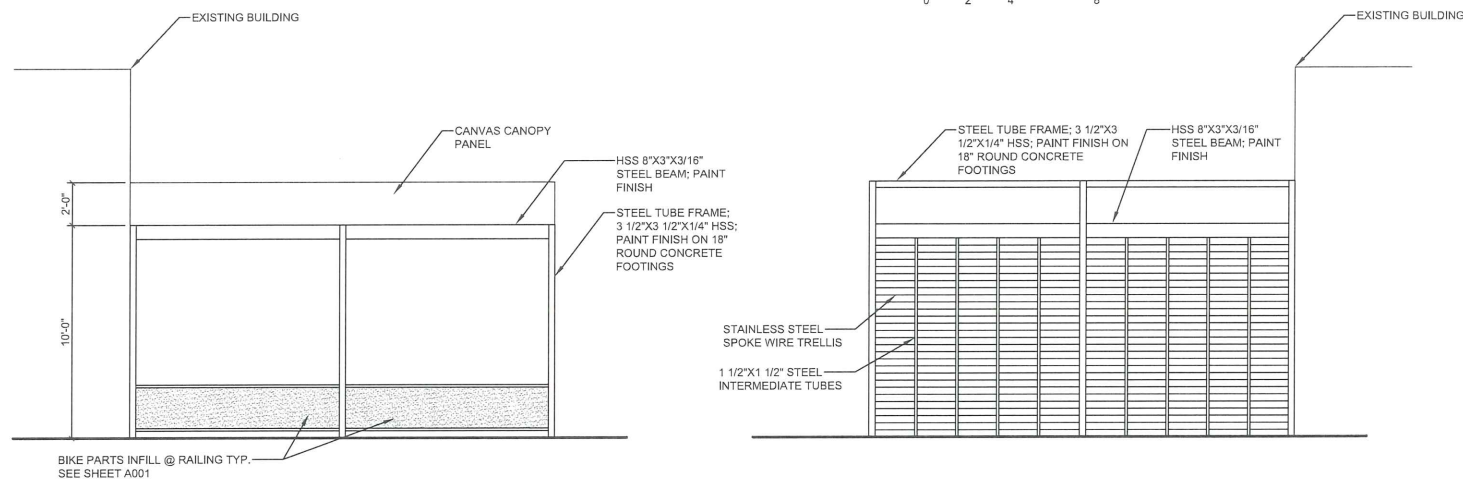
CONDITIONAL USE PERMIT	
Project number	WOR-17-01
Date	03/21/2018

A100



1 SOUTH ELEVATION

1/4" = 1'-0"



2 WEST ELEVATION

1/4" = 1'-0"



3 EAST ELEVATION

1/4" = 1'-0"



No.	Description	Date

WORKING DRAFT BEER COMPANY

BREW PUB

1129 E. WILSON ST
MADISON, WI 53703

ELEVATIONS

CONDITIONAL USE PERMIT
 Project number: WOR-17-01
 Date: 03/21/2018

A200

FCC4304

4" Round Wall or Pendant Mounted
Die-Cast Aluminum Cylinder.



ORDERING



20 pcs or Less / ships in 2 weeks *

EXAMPLE: FCC4304-120V-3K-1000-BK-FL

SERIES	VOLTAGE	SOURCE/TEMPERATURE	LED LUMENS	FINISH	LED OPTICS	ACCESSORIES
FCC4304	120V	LED 3K	600 Lumens (8W)	BK Black	SP Spot	LD LED Dimming (0-10V)
FCC4304P	277V	4K	1000 Lumens (12W)	BZ Bronze	NFL Narrow Flood	BBU Battery Backup, Remote
		35K		SL Silver	FL Flood	D CFL Dimming (0-10v)
		PL 13T		WH White	WFL Wide Flood	CPLX Custom Pendant Length (X= Inches)
		INC 75W PAR30		CC Custom Color		

SPECIFICATION

MOUNTING

- Mounts directly to junction box. Pendant (18" length standard) with swivel canopy.
- Custom pendant lengths available.

CONSTRUCTION

- Marine grade, corrosion resistant, heavy walled, high pressure die-cast aluminum with die-cast back mounting plate.
- Lens is clear, tempered glass.
- Silicone continuous gasket to seal out contaminants.

LED

- Lumens stated are the minimum delivered out of the luminaire. LED lifetime is greater than or equal to 70,000 hours with the lumen depreciation greater than L70. All of our luminaires are LM-80 tested and are ≥ CRI80, with a 4-step MacAdam Ellipse color consistency. Integral power supply standard. Input voltage 120V or 277V standard. Consult factory for non-white static LED colors; Red, Green, Blue or Amber.

FINISH

- Six stage chemical pre-treatment process that includes iron phosphate, to prepare the substrate for a UV stable, super durable standard polyester powder coat.
- Optional e-coat process is added to the standard finish including zinc phosphate for a 5 year limited warranty.

ELECTRICAL

- Socket** PL: Four pin plug-in type compact fluorescent lamp holder (*lamp by others*).

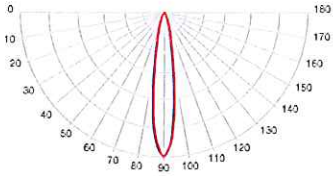
LISTING

- UL & cUL/ETL, U.S. and CA listed for damp locations. IP65 Rating.

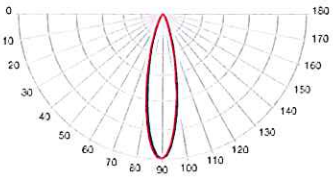
* Terms & Conditions for our Go Green Speed, quick ship program are located on our website: fclighting.com

PHOTOMETRY

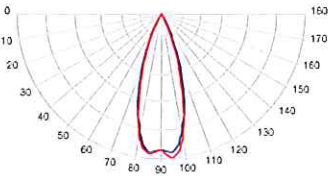
FCC4304 120V LED 4000K 1000 Lumens Spot Distribution



FCC4304 120V LED 4000K 1000 Lumens Narrow Flood Distribution

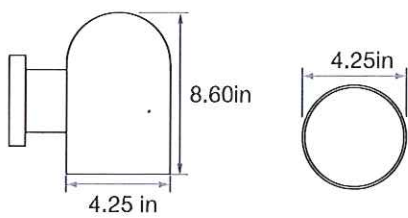


FCC4304 120V LED 4000K 1000 Lumens Flood Distribution



DIMENSIONS

FCC4304



FCC4304P

