

**APPLICATION FOR
URBAN DESIGN COMMISSION
REVIEW AND APPROVAL**

AGENDA ITEM # _____

Project # _____

DATE SUBMITTED: <u>October 26, 2011</u>	Action Requested
UDC MEETING DATE: <u>November 2, 2011</u>	<input type="checkbox"/> Informational Presentation
	<input type="checkbox"/> Initial Approval and/or Recommendation
	<input checked="" type="checkbox"/> Final Approval and/or Recommendation

PROJECT ADDRESS: 1001 University Avenue

ALDERMANIC DISTRICT: Scott Resnick- District #8

OWNER/DEVELOPER (Partners and/or Principals)

ARCHITECT/DESIGNER/OR AGENT:

LZ Ventures / John Leja

Knothe & Bruce Architects, LLC

1022 W. Johnson Street , Suite One

7601 University Avenue, Suite 201

Madison, WI 53715

Middleton, Wisconsin 53562

CONTACT PERSON: J. Randy Bruce/Knothe & Bruce Architects, LLC

Address: 7601 University Avenue, Suite 201

Middleton, Wisconsin 53562

Phone: 608-836-3690

Fax: 608-836-6934

E-mail address: rbruce@knothebruce.com

TYPE OF PROJECT:

(See Section A For:)

- Planned Unit Development (PUD)
 - General Development Plan (GDP)
 - Specific Implementation Plan (SIP)
- Planned Community Development (PCD)
 - General Development Plan (GDP)
 - Specific Implementation Plan (SIP)
- Planned Residential Development (PRD)
- New Construction or Exterior Remodeling in an Urban Design District* (A public hearing is required as well as a fee)
- School, Public Building or Space (Fee may be required)
- New Construction or Addition to or Remodeling of a Retail, Hotel, or Motel Building Exceeding 50,000 Sq.Ft.
- Planned Commercial Site

(See Section B for:)

- New Construction or Exterior Remodeling in C4 District (Fee required)

(See Section C for:)

- R.P.S.M. Parking Variance (Fee required)

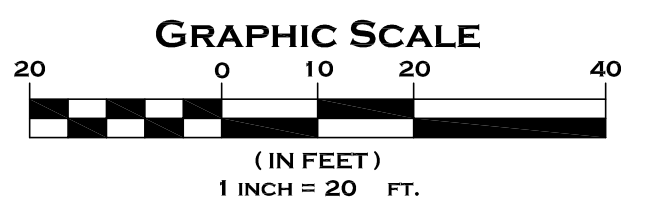
(See Section D for:)

- Comprehensive Design Review* (Fee required)
- Street Graphics Variance* (Fee Required)
- Other _____

*Public Hearing Required (Submission Deadline 3 Weeks in Advance of Meeting Date)

Consultant

Notes



SHEET INDEX
C-1.1 OVERALL SITE PLAN
C-1.2 SITE PLAN

L-1.1 SITE PLANTING PLAN
L-1.2 PLANT SCHEDULE

A-1.1 PARKING LEVEL - TWO
A-1.2 PARKING LEVEL - ONE
A-1.3 FIRST FLOOR PLAN
A-1.4 SECOND-FIFTH FLOOR PLAN
A-1.5 SIXTH FLOOR PLAN
A-1.6 SEVENTH-EIGHTH FLOOR PLAN
A-2.1 EXTERIOR ELEVATIONS
A-2.2 ELEVATION ALONG UNIVERSITY AVENUE
A-2.3 WEST ELEVATION
A-2.4 ELEVATION ALONG CONKLIN PLACE
A-2.5 ELEVATION ALONG BROOKS STREET

SITE STATISTICS

Dwelling Unit Mix:

One-Bedroom	8
Two-Bedroom	20
Three-Bedroom	20
Four-Bedroom	23
Five-Bedroom	8
Total Dwelling Units	79

Areas:

Total Gross Floor Area	90668 S.F.
------------------------	------------

Densities:

Lot Area	24,661 or .51 acres
----------	---------------------

Building Height: Eight Stories

Vehicle Parking:

Underground-Residential	62 stalls
-------------------------	-----------

Bike Parking:

Underground-Residential 2'x6'	50 stalls
Underground-Residential Wall Hung	104 stalls
On site-2'x6'	46 stalls
Total	200 stalls

Moped Parking:

Underground-Residential	39 stalls
Total	39 stalls

Revisions

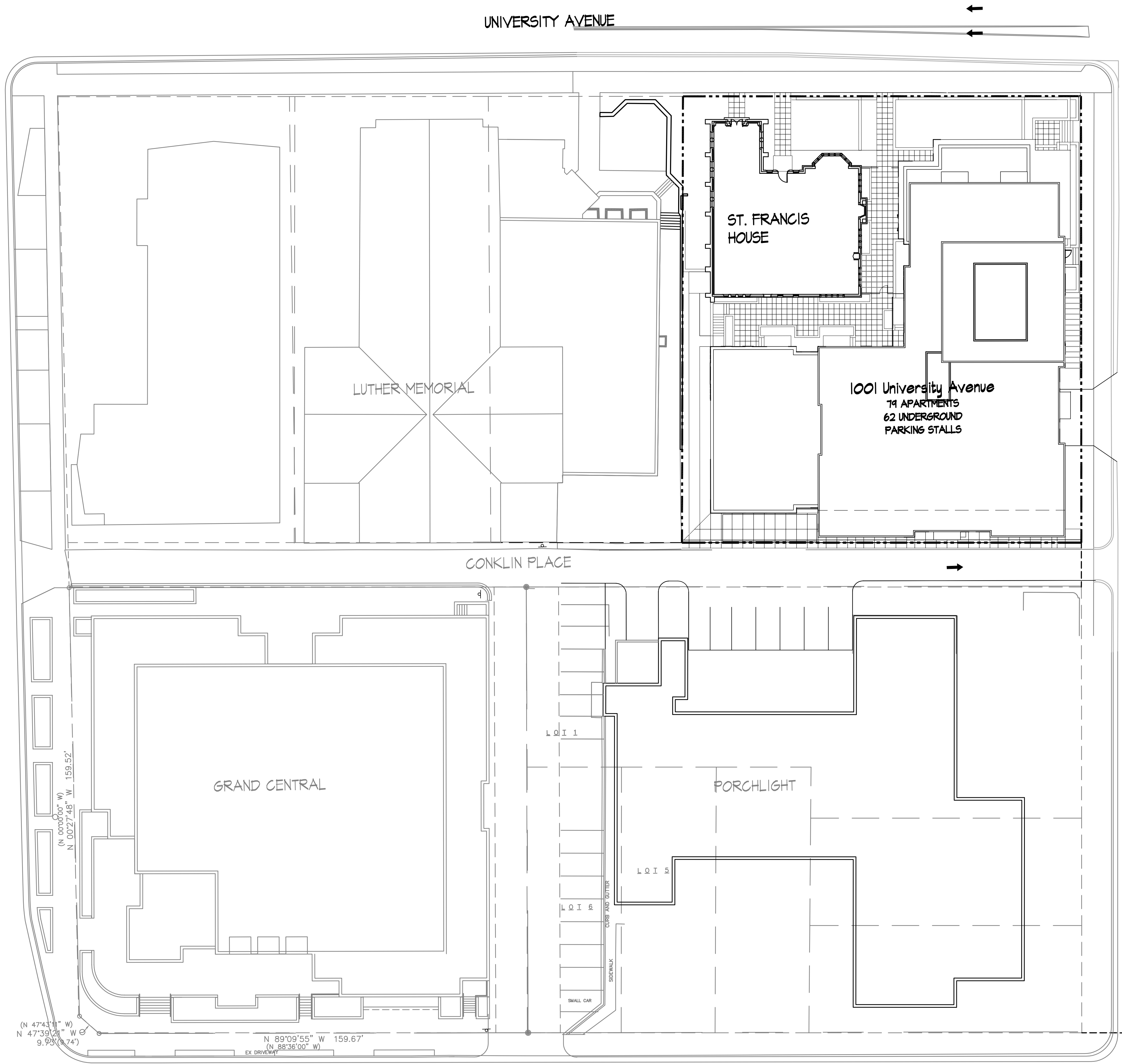
- City Plan Review - April 20, 2011
- City Plan Review Revised - August 31, 2011
- UDC- October 26, 2011

Project Title
1001 University Avenue
Madison, WI

Drawing Title
Overall Site Plan

Project No. **1037** Drawing No. **C-1.0**

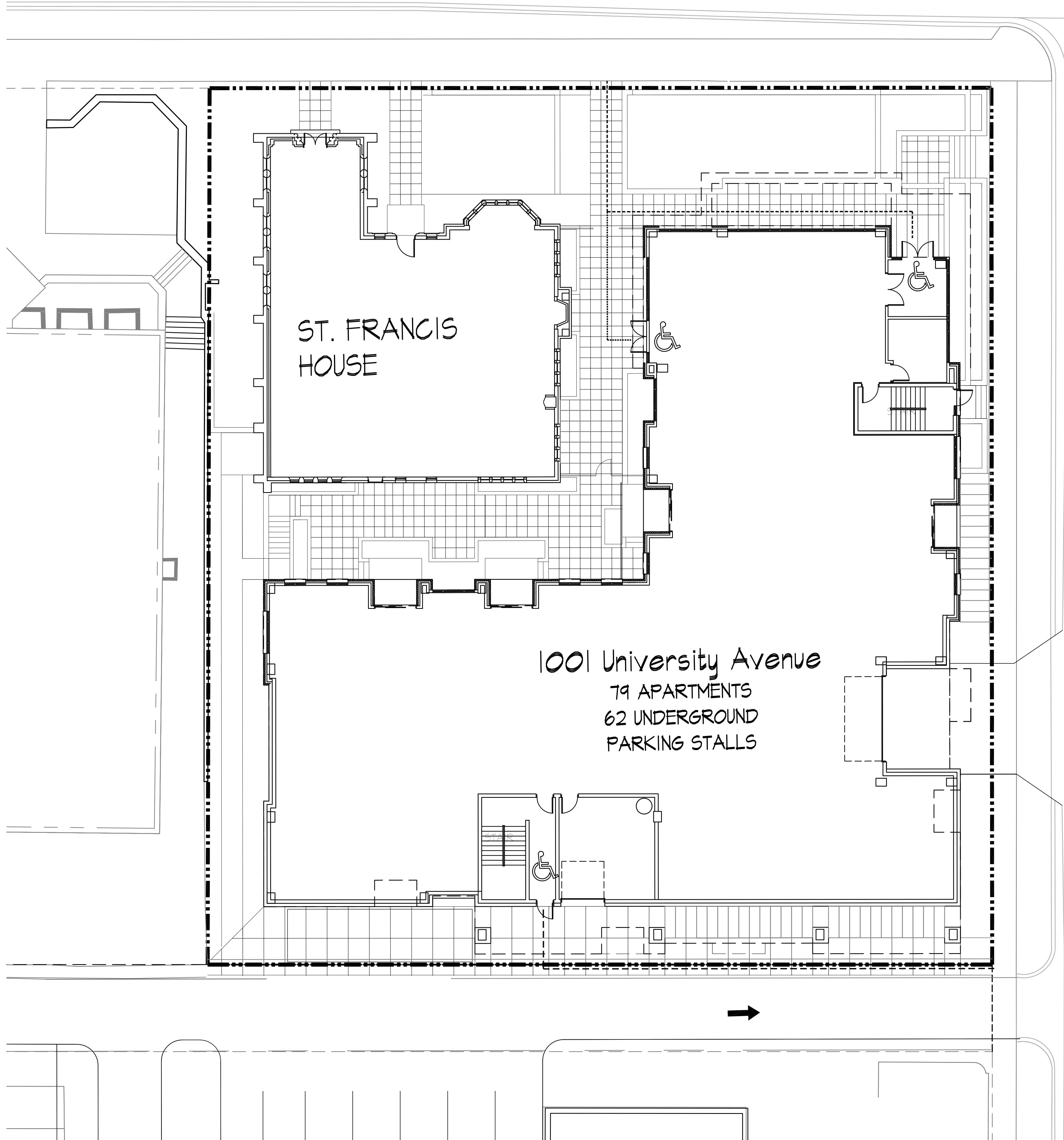
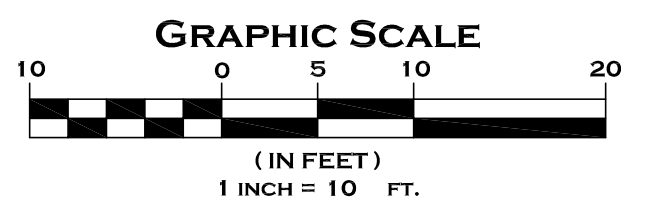
This document contains confidential or proprietary information of Knothe & Bruce Architects. Neither the document nor the information herein is to be reproduced, distributed, used, or disclosed, either in whole or in part, except as specifically authorized by Knothe & Bruce Architects. Knothe & Bruce Architects is a Limited Liability Company of Wisconsin.



A SITE PLAN
1"=20'-0"

Consultant

Notes



ST. FRANCIS
HOUSE

1001 University Avenue
79 APARTMENTS
62 UNDERGROUND
PARKING STALLS

N. BROOKS STREET

A SITE PLAN
1"=20'-0"

Revisions

- City Plan Review - April 20, 2011
- UDC- October 26, 2011

Project Title

1001 University Avenue
Madison, WI

Drawing Title

Overall Site Plan

Project No.

1037

Drawing No.

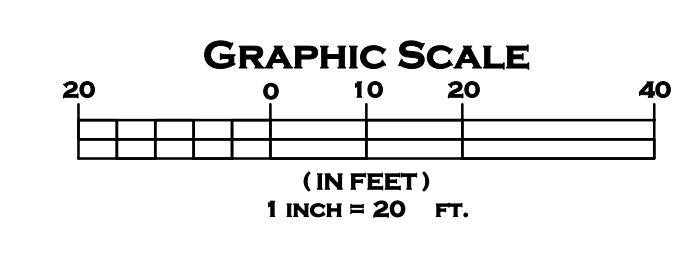
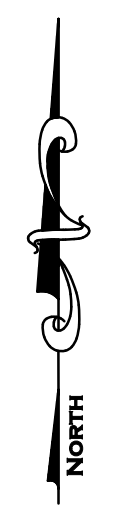
C-1.1

This document contains confidential or proprietary information of Knothe & Bruce Architects. Neither the document nor the information herein is to be reproduced, distributed, used, or disclosed, either in whole or in part, except as specifically authorized by Knothe & Bruce Architects. Knothe & Bruce Architects is a Limited Liability Company of Wisconsin.

Consultant



Notes



Revisions

- City Plan Review - April 20, 2011
- UDC Review - August 31, 2011
- UDC Review - October 26, 2011

Project Title

1001 University Avenue

1001 UNIVERSITY AVE.

Drawing Title

Site Planting Plan

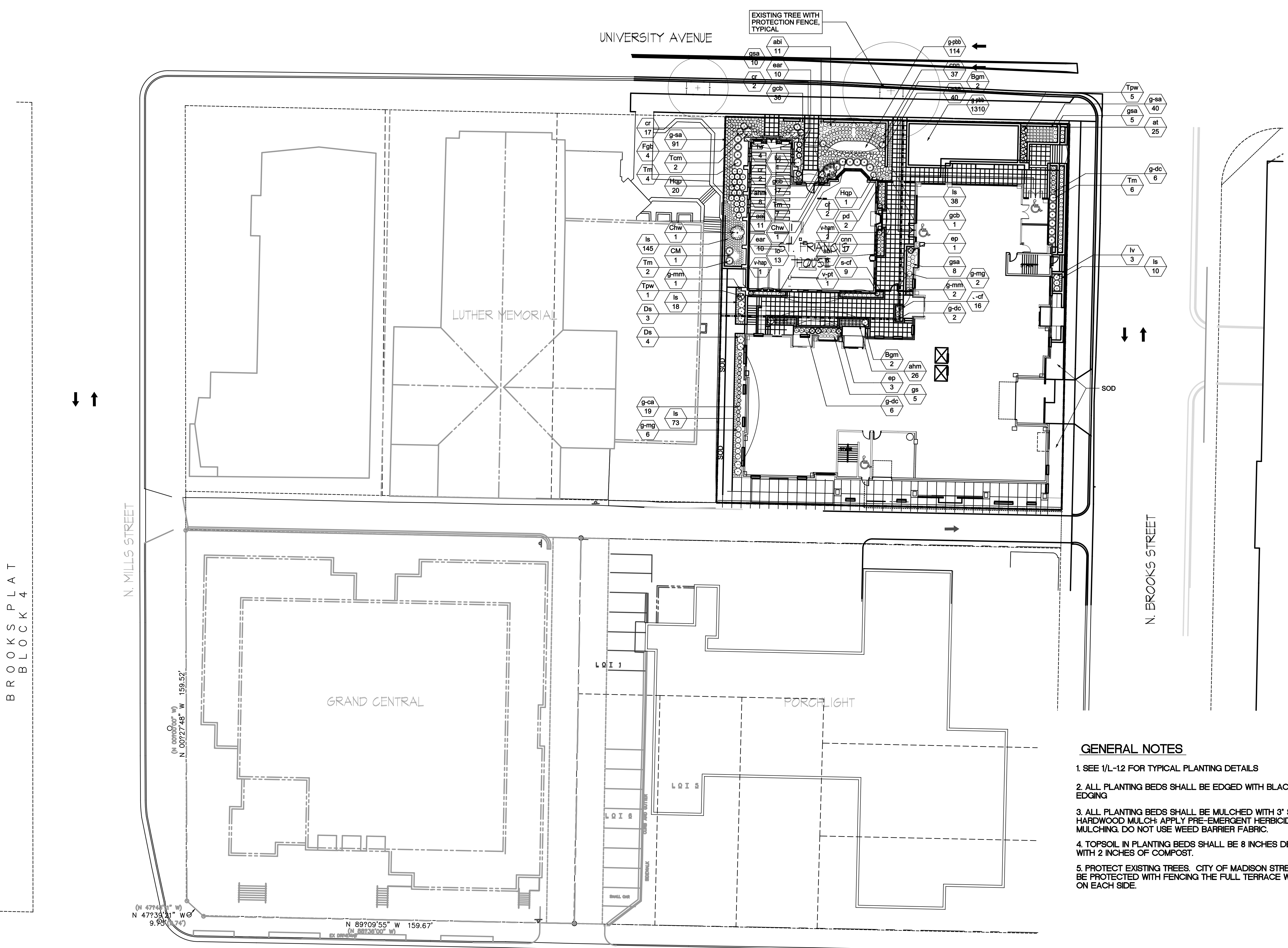
Project No.

1037

Drawing No.

L-1.1

This document contains confidential or proprietary information of Knothe & Bruce Architects. Neither the document nor the information herein is to be reproduced, distributed, used, or disclosed, either in whole or in part, except as specifically authorized by Knothe & Bruce Architects. Knothe & Bruce Architects is a Limited Liability Company of Wisconsin.



GENERAL NOTES

1. SEE 1/L-12 FOR TYPICAL PLANTING DETAILS
2. ALL PLANTING BEDS SHALL BE EDGED WITH BLACK ALUMINUM EDGING
3. ALL PLANTING BEDS SHALL BE MULCHED WITH 3" SHREDDED HARDWOOD MULCH; APPLY PRE-EMERGENT HERBICIDE PRIOR TO MULCHING. DO NOT USE WEED BARRIER FABRIC.
4. TOPSOIL IN PLANTING BEDS SHALL BE 8 INCHES DEEP AND AMENDED WITH 2 INCHES OF COMPOST.
5. PROTECT EXISTING TREES. CITY OF MADISON STREET TREES SHALL BE PROTECTED WITH FENCING THE FULL TERRACE WIDTH AND 5'-0" MIN ON EACH SIDE.

1 SITE PLANTING PLAN
1"=20'

BROOKS PLAT
BLOCK 4

N. MILLS STREET

N. BROOKS STREET

UNIVERSITY AVENUE

LUTHER MEMORIAL

GRAND CENTRAL

PORCHLIGHT

(N 0000'00" W)
N 00'27.48" W 159.52'

(N 477'44" W)
N 47'39.31" W 9.92'

N 89'09"55" W 159.67'
(N 88'36"00" W)

EXISTING TREE WITH PROTECTION FENCE, TYPICAL

↓ ↑

SOD

LOI 1

LOI 5

LOI 8

SHALL ONE

abi 11
gsa 10
ear 10
cr 2
gcb 36

g-pbb 114
/con 37
Bgm 2
g-pbb 40
g-pbb 1310

g-pbb 5
g-pbb 40
g-pbb 25

g-pbb 6

lv 3
ls 10

cr 17
g-sa 91
Tcm 4
Tm 2
Hqp 20

ls 145
Tm 2
g-mm 1
Tpww 1
Ds 3
Ds 4

g-ca 19
g-mg 6

ls 73

Chw 1
CM 1
g-mm 1
Tpww 1
Ds 3
Ds 4

ls 145
Tm 2
g-mm 1
Tpww 1
Ds 3
Ds 4

Chw 1
CM 1
g-mm 1
Tpww 1
Ds 3
Ds 4

ls 145
Tm 2
g-mm 1
Tpww 1
Ds 3
Ds 4

Chw 1
CM 1
g-mm 1
Tpww 1
Ds 3
Ds 4

ls 145
Tm 2
g-mm 1
Tpww 1
Ds 3
Ds 4

Chw 1
CM 1
g-mm 1
Tpww 1
Ds 3
Ds 4

ls 145
Tm 2
g-mm 1
Tpww 1
Ds 3
Ds 4

Chw 1
CM 1
g-mm 1
Tpww 1
Ds 3
Ds 4

ls 145
Tm 2
g-mm 1
Tpww 1
Ds 3
Ds 4

gcb 1
gcb 2
gcb 3
gcb 4
gcb 5
gcb 6

gcb 1
gcb 2
gcb 3
gcb 4
gcb 5
gcb 6

gcb 1
gcb 2
gcb 3
gcb 4
gcb 5
gcb 6

gcb 1
gcb 2
gcb 3
gcb 4
gcb 5
gcb 6

gcb 1
gcb 2
gcb 3
gcb 4
gcb 5
gcb 6

gcb 1
gcb 2
gcb 3
gcb 4
gcb 5
gcb 6

gcb 1
gcb 2
gcb 3
gcb 4
gcb 5
gcb 6

gcb 1
gcb 2
gcb 3
gcb 4
gcb 5
gcb 6

gcb 1
gcb 2
gcb 3
gcb 4
gcb 5
gcb 6

gcb 1
gcb 2
gcb 3
gcb 4
gcb 5
gcb 6

gcb 1
gcb 2
gcb 3
gcb 4
gcb 5
gcb 6

gcb 1
gcb 2
gcb 3
gcb 4
gcb 5
gcb 6

gcb 1
gcb 2
gcb 3
gcb 4
gcb 5
gcb 6

gcb 1
gcb 2
gcb 3
gcb 4
gcb 5
gcb 6

gcb 1
gcb 2
gcb 3
gcb 4
gcb 5
gcb 6

gcb 1
gcb 2
gcb 3
gcb 4
gcb 5
gcb 6

gcb 1
gcb 2
gcb 3
gcb 4
gcb 5
gcb 6

gcb 1
gcb 2
gcb 3
gcb 4
gcb 5
gcb 6

gcb 1
gcb 2
gcb 3
gcb 4
gcb 5
gcb 6

gcb 1
gcb 2
gcb 3
gcb 4
gcb 5
gcb 6

gcb 1
gcb 2
gcb 3
gcb 4
gcb 5
gcb 6

gcb 1
gcb 2
gcb 3
gcb 4
gcb 5
gcb 6

gcb 1
gcb 2
gcb 3
gcb 4
gcb 5
gcb 6

gcb 1
gcb 2
gcb 3
gcb 4
gcb 5
gcb 6

gcb 1
gcb 2
gcb 3
gcb 4
gcb 5
gcb 6

gcb 1
gcb 2
gcb 3
gcb 4
gcb 5
gcb 6

gcb 1
gcb 2
gcb 3
gcb 4
gcb 5
gcb 6

gcb 1
gcb 2
gcb 3
gcb 4
gcb 5
gcb 6

gcb 1
gcb 2
gcb 3
gcb 4
gcb 5
gcb 6

gcb 1
gcb 2
gcb 3
gcb 4
gcb 5
gcb 6

gcb 1
gcb 2
gcb 3
gcb 4
gcb 5
gcb 6

gcb 1
gcb 2
gcb 3
gcb 4
gcb 5
gcb 6

gcb 1
gcb 2
gcb 3
gcb 4
gcb 5
gcb 6

gcb 1
gcb 2
gcb 3
gcb 4
gcb 5
gcb 6

gcb 1
gcb 2
gcb 3
gcb 4
gcb 5
gcb 6

gcb 1
gcb 2
gcb 3
gcb 4
gcb 5
gcb 6

gcb 1
gcb 2
gcb 3
gcb 4
gcb 5
gcb 6

gcb 1
gcb 2
gcb 3
gcb 4
gcb 5
gcb 6

gcb 1
gcb 2
gcb 3
gcb 4
gcb 5
gcb 6

gcb 1
gcb 2
gcb 3
gcb 4
gcb 5
gcb 6

gcb 1
gcb 2
gcb 3
gcb 4
gcb 5
gcb 6

gcb 1
gcb 2
gcb 3
gcb 4
gcb 5
gcb 6

gcb 1
gcb 2
gcb 3
gcb 4
gcb 5
gcb 6

gcb 1
gcb 2
gcb 3
gcb 4
gcb 5
gcb 6

gcb 1
gcb 2
gcb 3
gcb 4
gcb 5
gcb 6

gcb 1
gcb 2
gcb 3
gcb 4
gcb 5
gcb 6

gcb 1
gcb 2
gcb 3
gcb 4
gcb 5
gcb 6

gcb 1
gcb 2
gcb 3
gcb 4
gcb 5
gcb 6

gcb 1
gcb 2
gcb 3
gcb 4
gcb 5
gcb 6

gcb 1
gcb 2
gcb 3
gcb 4
gcb 5
gcb 6

gcb 1
gcb 2
gcb 3
gcb 4
gcb 5
gcb 6

gcb 1
gcb 2
gcb 3
gcb 4
gcb 5
gcb 6

gcb 1
gcb 2
gcb 3
gcb 4
gcb 5
gcb 6

gcb 1
gcb 2
gcb 3
gcb 4
gcb 5
gcb 6

gcb 1
gcb 2
gcb 3
gcb 4
gcb 5
gcb 6

gcb 1
gcb 2
gcb 3
gcb 4
gcb 5
gcb 6

gcb 1
gcb 2
gcb 3
gcb 4
gcb 5
gcb 6

gcb 1
gcb 2
gcb 3
gcb 4
gcb 5
gcb 6

gcb 1
gcb 2
gcb 3
gcb 4
gcb 5
gcb 6

gcb 1
gcb 2
gcb 3
gcb 4
gcb 5
gcb 6

gcb 1
gcb 2
gcb 3
gcb 4
gcb 5
gcb 6

gcb 1
gcb 2
gcb 3
gcb 4
gcb 5
gcb 6

gcb 1
gcb 2
gcb 3
gcb 4
gcb 5
gcb 6

gcb 1
gcb 2
gcb 3
gcb 4
gcb 5
gcb 6

gcb 1
gcb 2
gcb 3
gcb 4
gcb 5
gcb 6

gcb 1
gcb 2
gcb 3
gcb 4
gcb 5
gcb 6

gcb 1
gcb 2
gcb 3
gcb 4
gcb 5
gcb 6

gcb 1
gcb 2
gcb 3
gcb 4
gcb 5
gcb 6

gcb 1
gcb 2
gcb 3
gcb 4
gcb 5
gcb 6

gcb 1
gcb 2
gcb 3
gcb 4
gcb 5
gcb 6

gcb 1
gcb 2
gcb 3
gcb 4
gcb 5
gcb 6

gcb 1
gcb 2
gcb 3
gcb 4
gcb 5
gcb 6

gcb 1
gcb 2
gcb 3
gcb 4
gcb 5
gcb 6

gcb 1
gcb 2
gcb 3
gcb 4
gcb 5
gcb 6

gcb 1
gcb 2
gcb 3
gcb 4
gcb 5
gcb 6

gcb 1
gcb 2
gcb 3
gcb 4
gcb 5
gcb 6

gcb 1
gcb 2
gcb 3
gcb 4
gcb 5
gcb 6

gcb 1
gcb 2
gcb 3
gcb 4
gcb 5
gcb 6

gcb 1
gcb 2
gcb 3
gcb 4
gcb 5
gcb 6

gcb 1
gcb 2
gcb 3
gcb 4
gcb 5
gcb 6

gcb 1
gcb 2
gcb 3
gcb 4
gcb 5
gcb 6

gcb 1
gcb 2
gcb 3
gcb 4
gcb 5
gcb 6

gcb 1
gcb 2
gcb 3
gcb 4
gcb 5
gcb 6

gcb 1
gcb 2
gcb 3
gcb 4
gcb 5
gcb 6

gcb 1
gcb 2
gcb 3
gcb 4
gcb 5
gcb 6

gcb 1
gcb 2
gcb 3
gcb 4
gcb 5
gcb 6

gcb 1
gcb 2
gcb 3
gcb 4
gcb 5
gcb 6

gcb 1
gcb 2
gcb 3
gcb 4
gcb 5
gcb 6

gcb 1
gcb 2
gcb 3
gcb 4
gcb 5
gcb 6

gcb 1
gcb 2
gcb 3
gcb 4
gcb 5
gcb 6

gcb 1
gcb 2
gcb 3
gcb 4
gcb 5
gcb 6

gcb 1
gcb 2
gcb 3
gcb 4
gcb 5
gcb 6

gcb 1
gcb 2
gcb 3
gcb 4
gcb 5
gcb 6

gcb 1
gcb 2
gcb 3
gcb 4
gcb 5
gcb 6

gcb 1
gcb 2
gcb 3
gcb 4
gcb 5
gcb 6

gcb 1
gcb 2
gcb 3
gcb 4
gcb 5
gcb 6

gcb 1
gcb 2
gcb 3
gcb 4
gcb 5
gcb 6

gcb 1
gcb 2
gcb 3
gcb 4
gcb 5
gcb 6

gcb 1
gcb 2
gcb 3
gcb 4
gcb 5
gcb 6

gcb 1
gcb 2
gcb 3
gcb 4
gcb 5
gcb 6

gcb 1
gcb 2
gcb 3
gcb 4
gcb 5
gcb 6

gcb 1
gcb 2
gcb 3
gcb 4
gcb 5
gcb 6

gcb 1
gcb 2
gcb 3
gcb 4
gcb 5
gcb 6

gcb 1
gcb 2
gcb 3
gcb 4
gcb 5
gcb 6

gcb 1
gcb 2
gcb 3
gcb 4
gcb 5
gcb 6

gcb 1
gcb 2
gcb 3
gcb 4
gcb 5
gcb 6

gcb 1
gcb 2
gcb 3
gcb 4
gcb 5
gcb 6

gcb 1
gcb 2
gcb 3
gcb 4
gcb 5
gcb 6

gcb 1
gcb 2
gcb 3
gcb 4
gcb 5
gcb 6

gcb 1
gcb 2
gcb 3
gcb 4
gcb 5
gcb 6

gcb 1
gcb 2
gcb 3
gcb 4
gcb 5
gcb 6

gcb 1
gcb 2
gcb 3
gcb 4
gcb 5
gcb 6

gcb 1
gcb 2
gcb 3
gcb 4
gcb 5
gcb 6

gcb 1
gcb 2
gcb 3
gcb 4
gcb 5
gcb 6

gcb 1
gcb 2
gcb 3
gcb 4
gcb 5
gcb 6

gcb 1
gcb 2
gcb 3
gcb 4
gcb 5
gcb 6

gcb 1
gcb 2
gcb 3
gcb 4
gcb 5
gcb 6

gcb 1
gcb 2
gcb 3
gcb 4
gcb 5
gcb 6

gcb 1
gcb 2
gcb 3
gcb 4
gcb 5
gcb 6

gcb 1
gcb 2
gcb 3
gcb 4
gcb 5
gcb 6

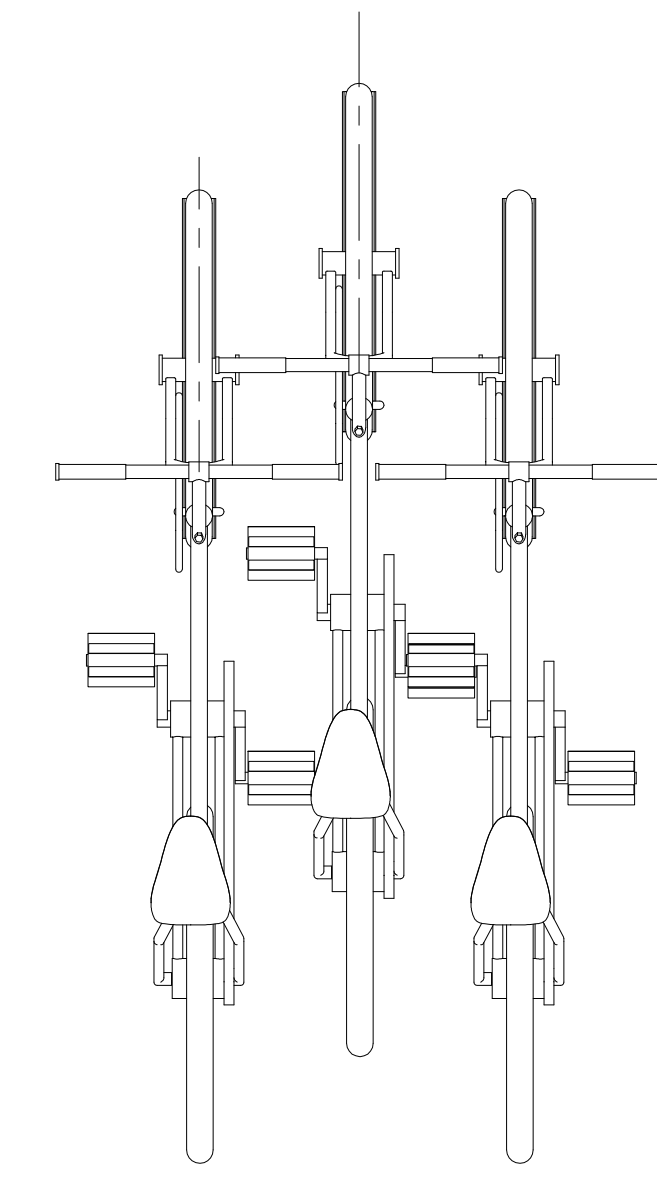
gcb 1
gcb 2
gcb 3
gcb 4
gcb 5
gcb 6

gcb 1
gcb 2
gcb 3
gcb 4
gcb 5
gcb 6

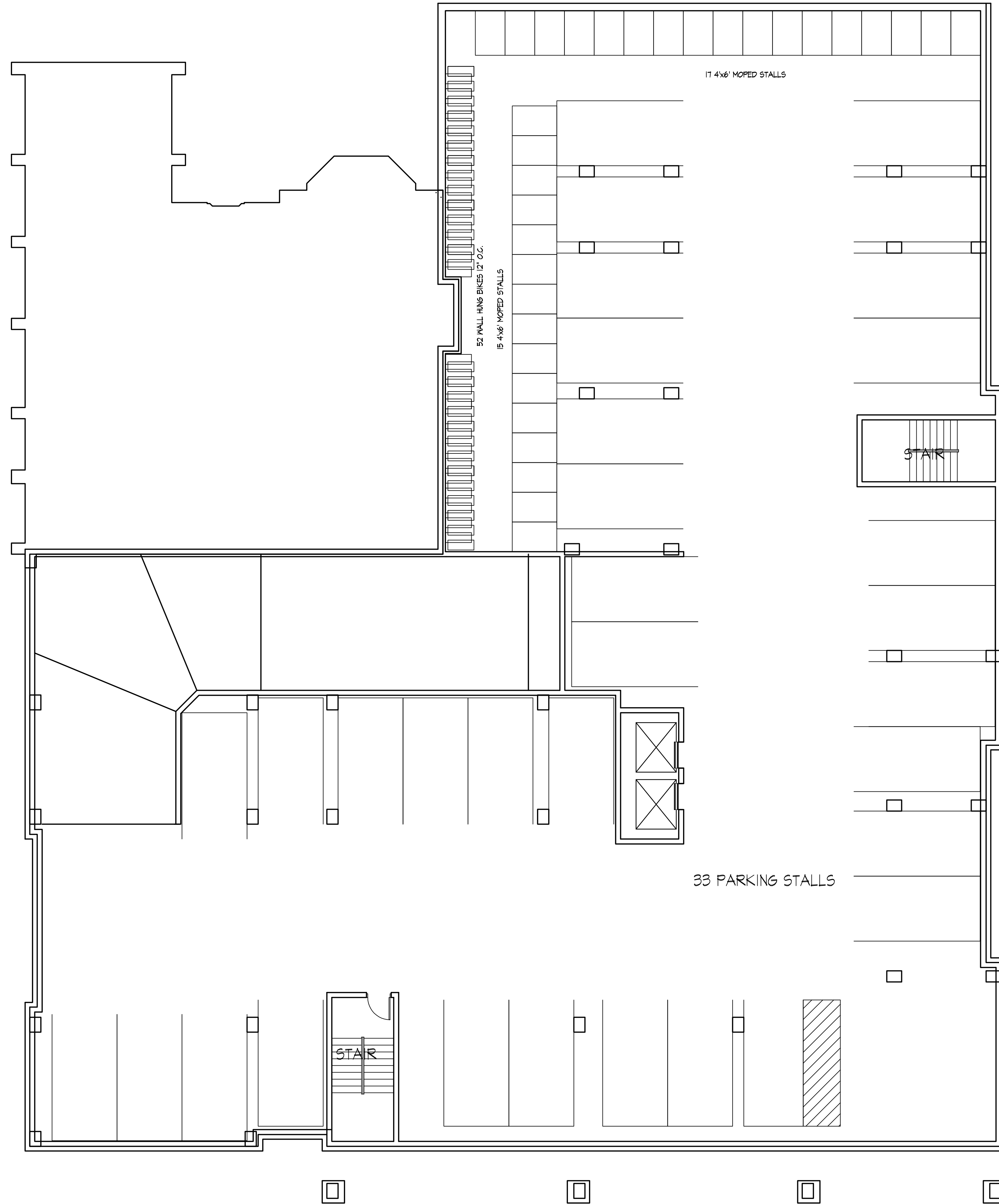
gcb 1
gcb 2
gcb 3
gcb 4
gcb 5
gcb 6

Consultant

Notes



○ WALL MOUNTED BIKE RACK



○ PARKING LEVEL - TWO
1/8" = 1'-0"

Revisions

- City Plan Review - April 20, 2011
- City Plan Review (Resubmit) - AUGUST 31, 2011
- UDC - OCTOBER 26, 2011

Project Title

1001 University Avenue
Madison, WI

Drawing Title

Parking Level - Two

Project No.

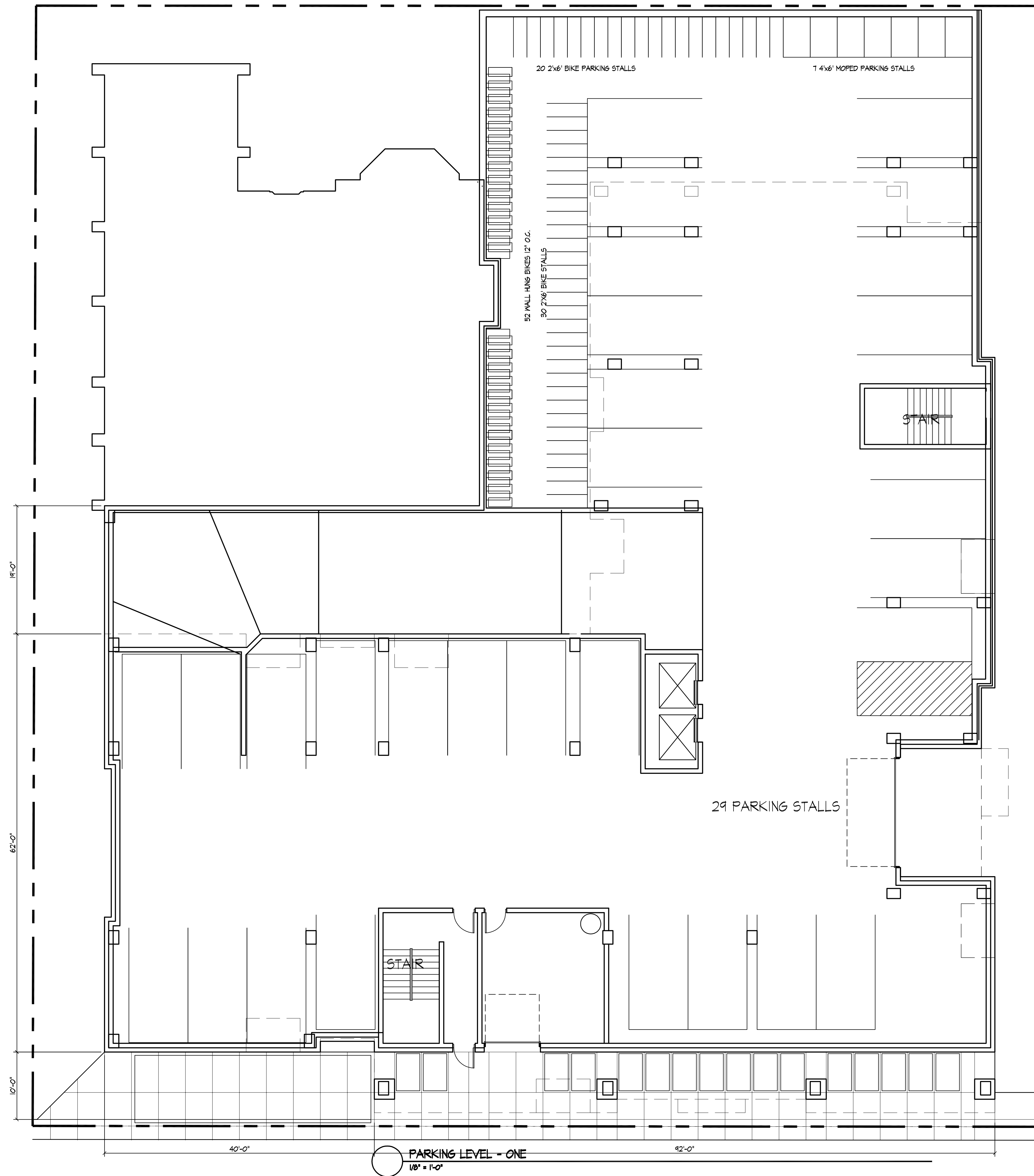
1037

Drawing No.

A-1.1

Consultant

Notes



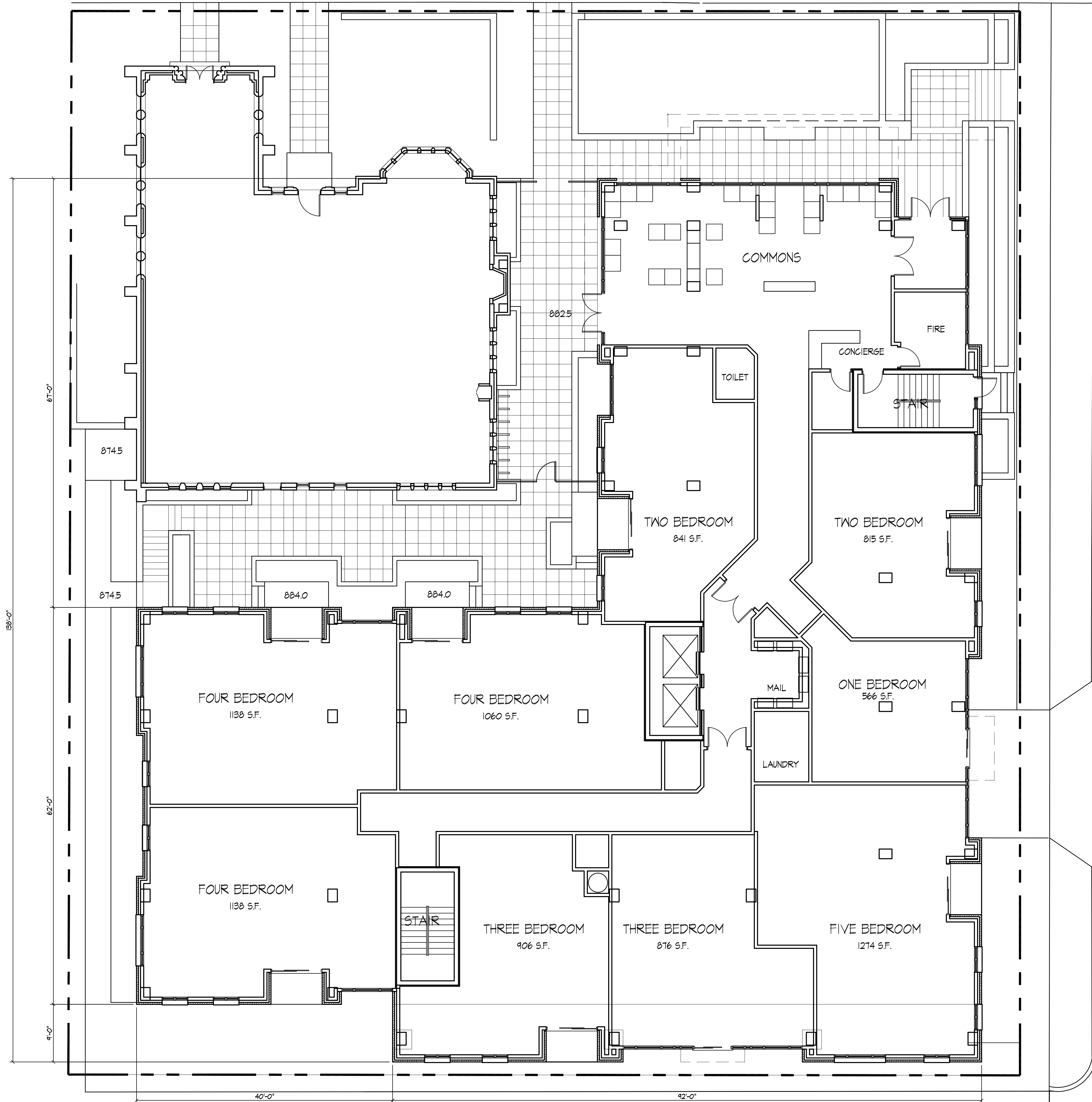
Revisions
City Plan Review - April 20, 2011
City Plan Review (Resubmit) - AUGUST 31, 2011
UDC - OCTOBER 26, 2011

Project Title
1001 University Avenue
Madison, WI

Drawing Title
Parking Level - One

Project No. **1037** Drawing No. **A-1.2**

This document contains confidential or proprietary information of Knothe & Bruce Architects. Neither the document nor the information herein is to be reproduced, distributed, used, or disclosed, either in whole or in part, except as specifically authorized by Knothe & Bruce Architects. Knothe & Bruce Architects is a Limited Liability Company of Wisconsin.



Revisions
 City Plan Review - April 20, 2011
 City Plan Review (Resubmit) - AUGUST 31, 2011
 UDC - OCTOBER 26, 2011

Project Title
1001 University Avenue
 Madison, WI

Drawing Title
First Floor Plan

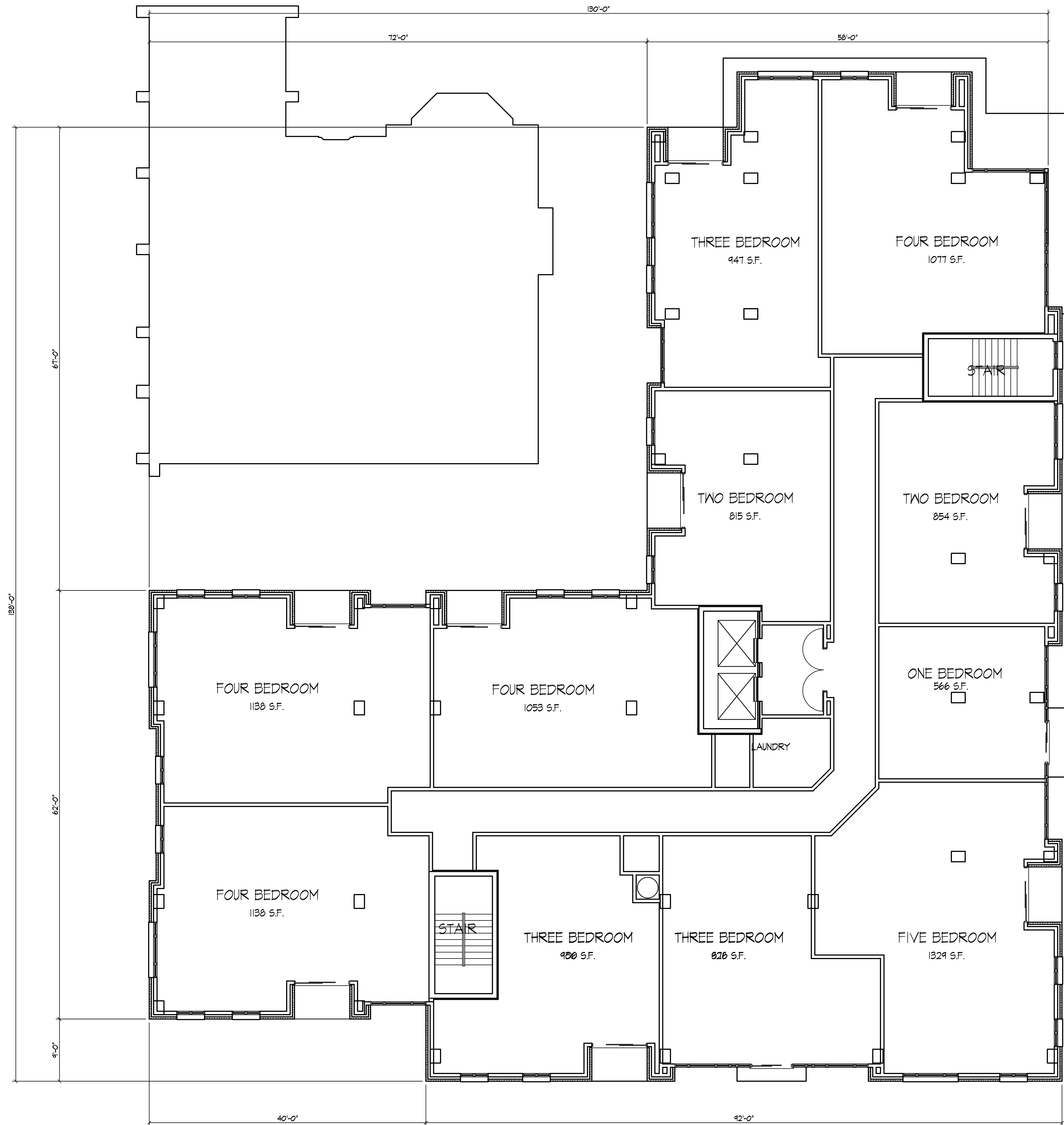
Project No. Drawing No.

1037

A-1.3

Consultant

Notes



Revisions

- City Plan Review - April 20, 2011
- City Plan Review (Resubmit) - AUGUST 31, 2011
- UDC - OCTOBER 26, 2011

Project Title

1001 University Avenue
Madison, WI

Drawing Title

**Second-Fifth
Floor Plan**

Project No.

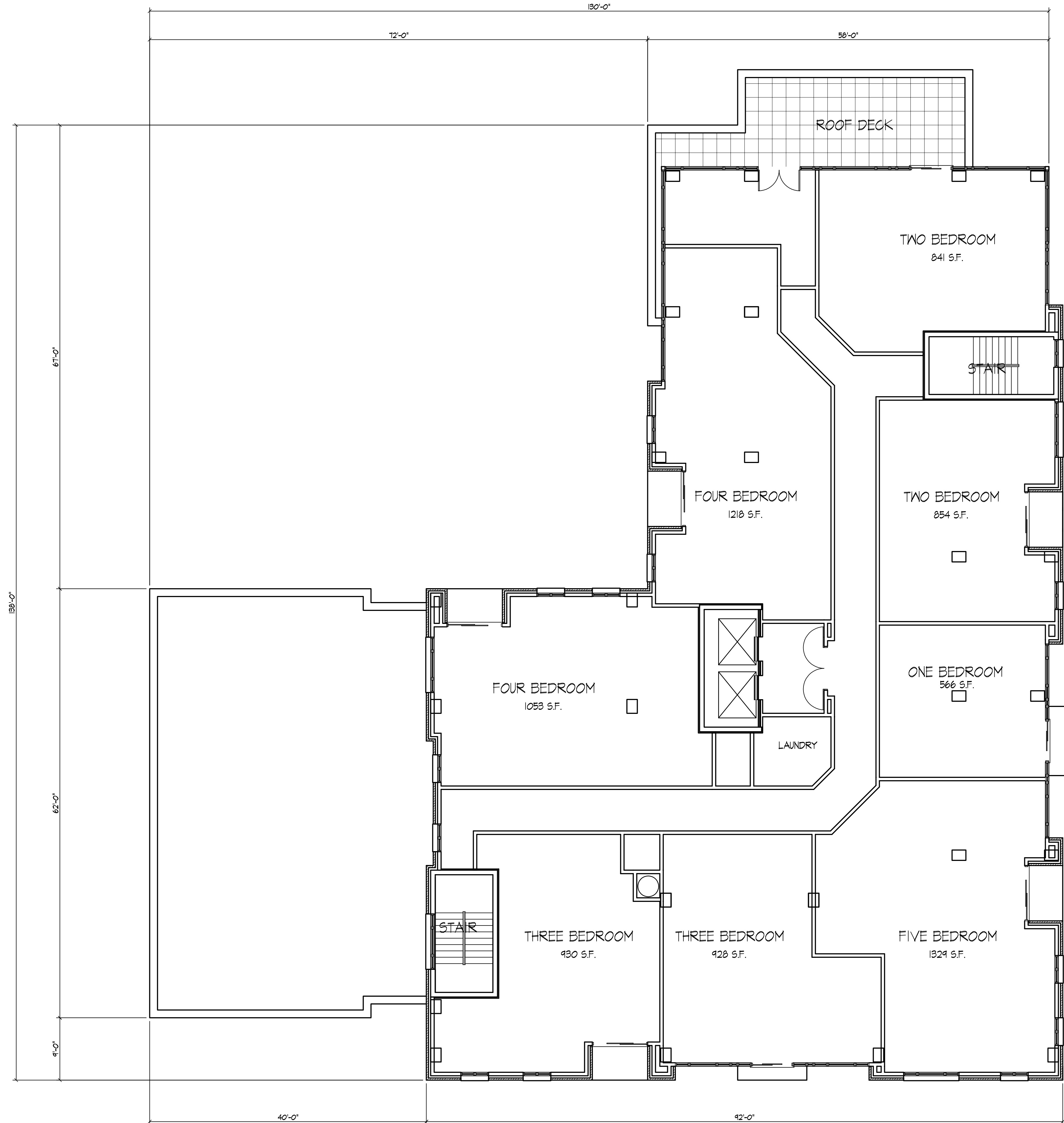
1037

Drawing No.

A-1.4

Consultant

Notes



Revisions

- City Plan Review - April 20, 2011
- City Plan Review (Resubmit) - AUGUST 31, 2011
- UDC - OCTOBER 26, 2011

Project Title

1001 University Avenue
 Madison, WI

Drawing Title

Sixth Floor Plan

Project No.

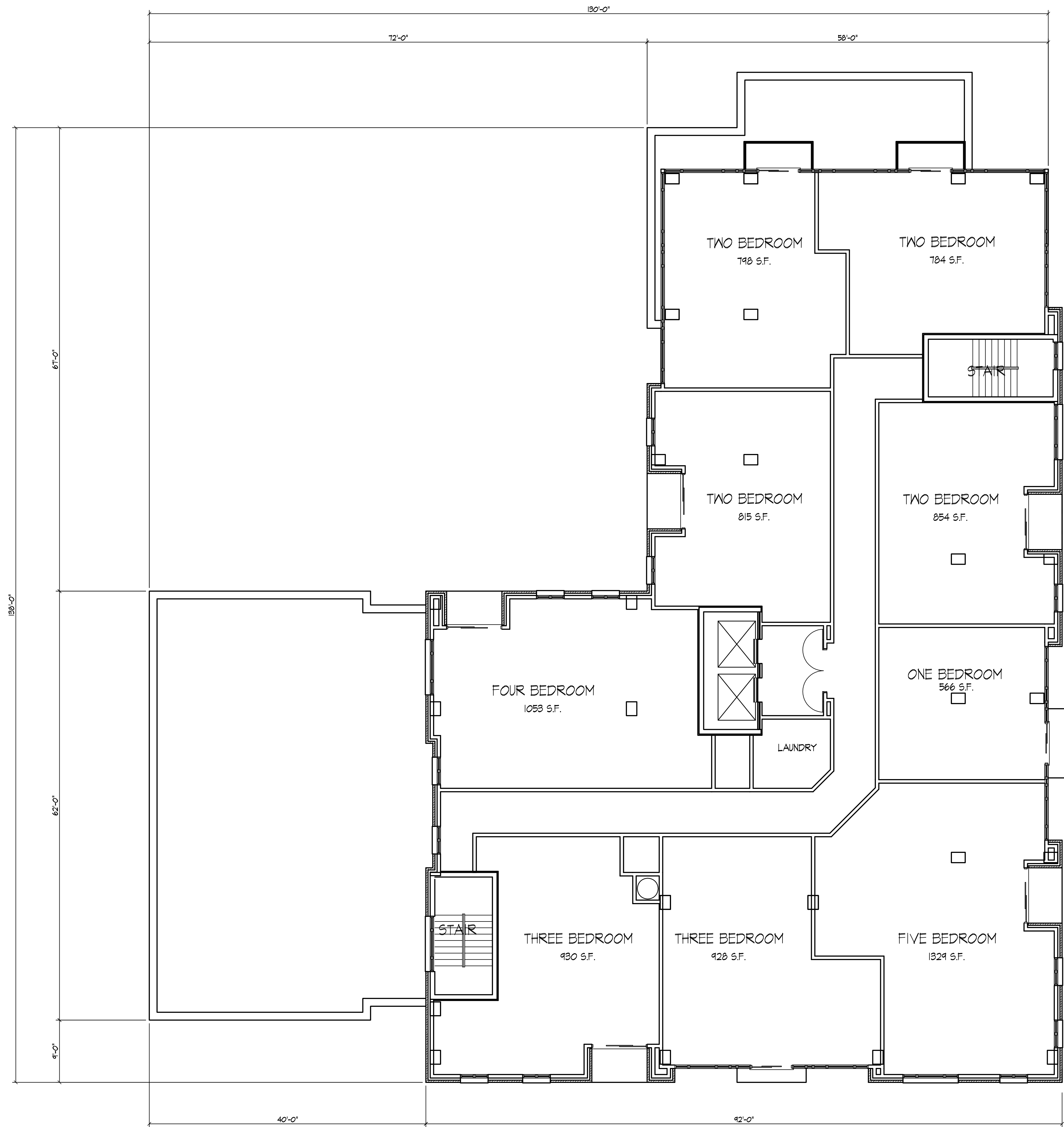
1037

Drawing No.

A-1.5

Consultant

Notes



Revisions
City Plan Review - April 20, 2011
City Plan Review (Resubmit) - August 31, 2011
UDC - OCTOBER 26, 2011

Project Title
1001 University Avenue
Madison, WI

Drawing Title
**Seventh-Eighth
Floor Plan**

Project No. Drawing No.

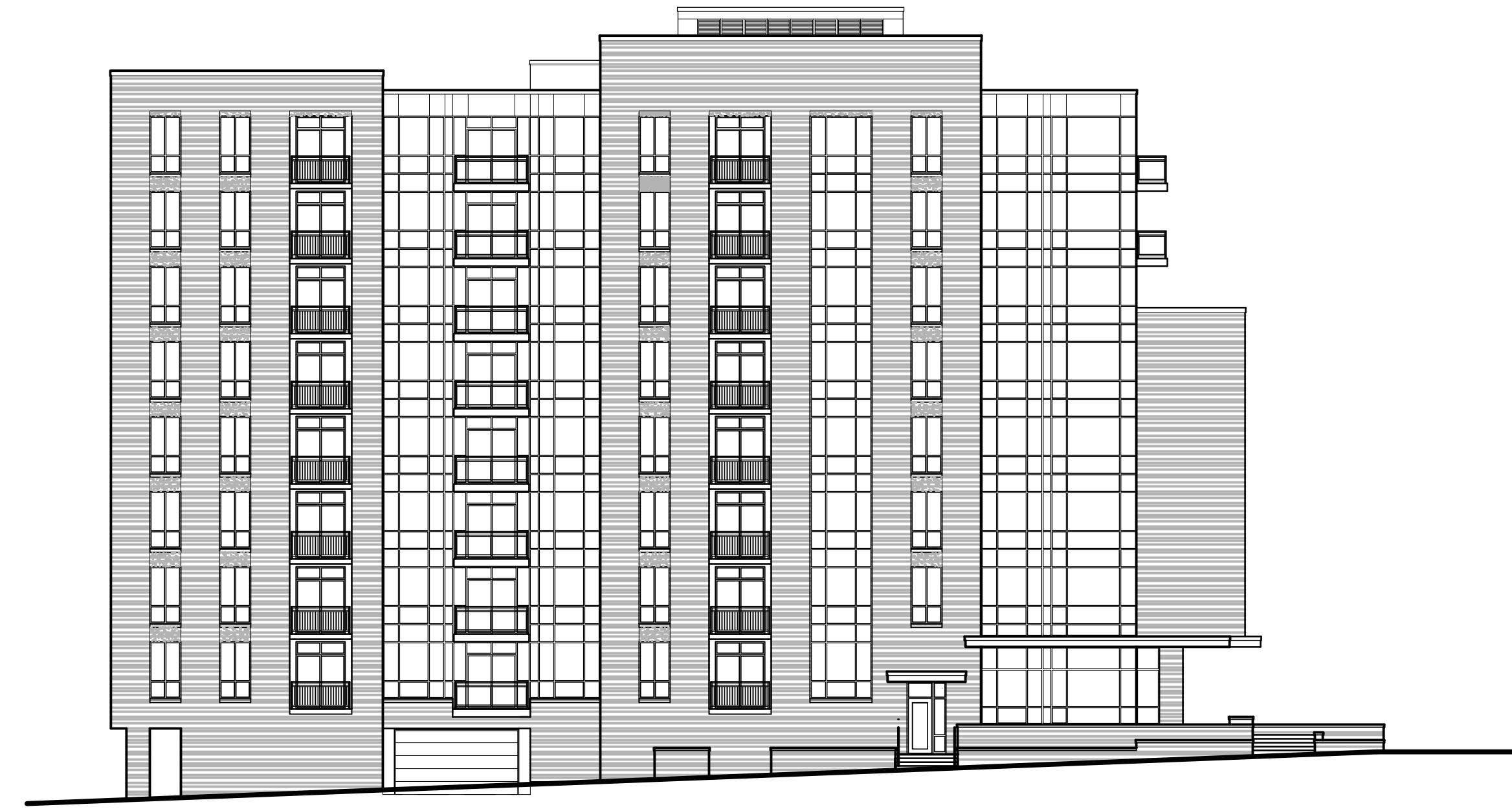
1037 A-1.6

SEVENTH-EIGHTH FLOOR PLAN
1/8" = 1'-0"

This document contains confidential or proprietary information of Knothe & Bruce Architects. Neither the document nor the information herein is to be reproduced, distributed, used, or disclosed, either in whole or in part, except as specifically authorized by Knothe & Bruce Architects. Knothe & Bruce Architects is a Limited Liability Company of Wisconsin.



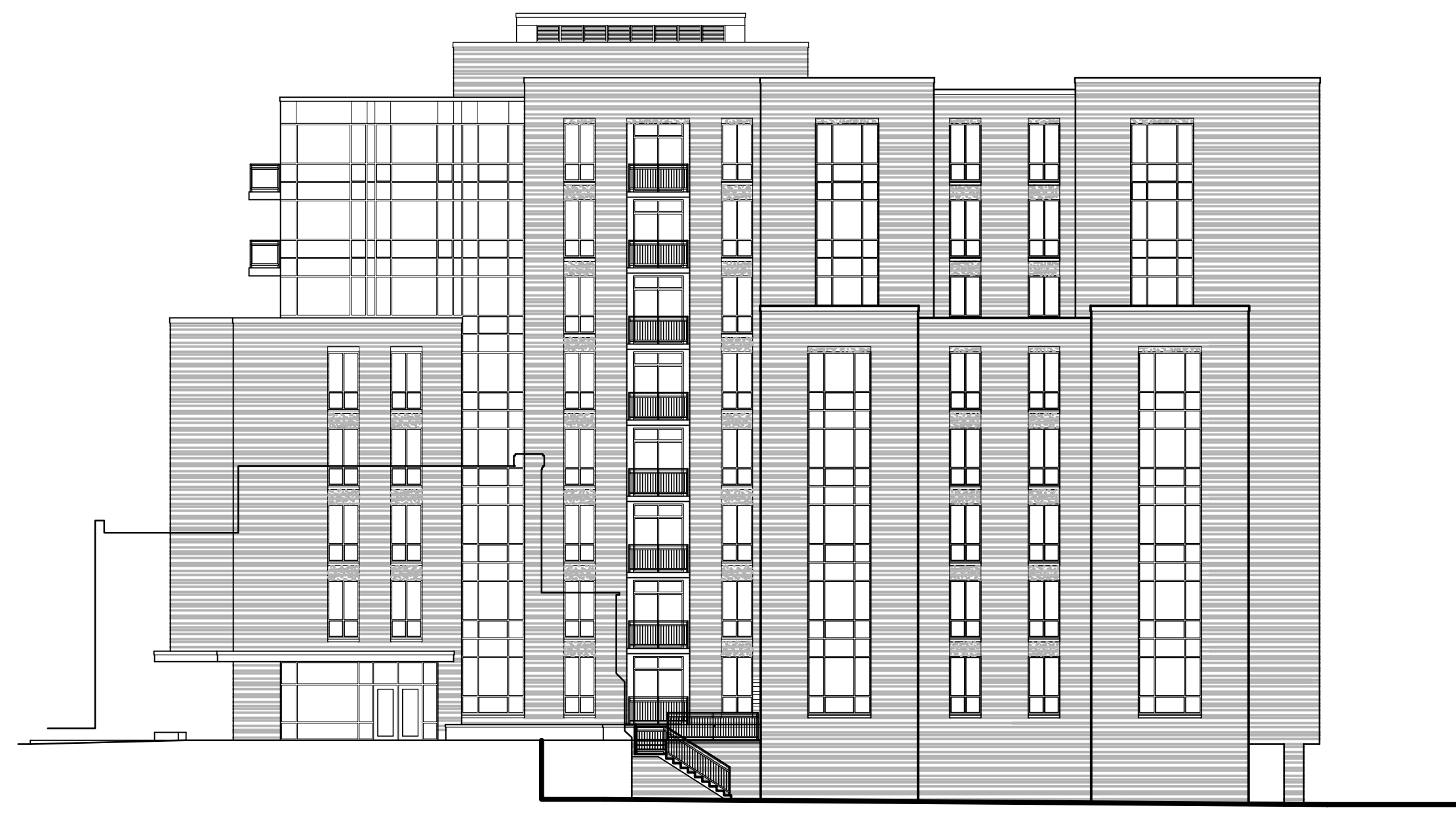
ELEVATION ALONG UNIVERSITY
1/16" = 1'-0"



ELEVATION ALONG BROOKS STREET
1/16" = 1'-0"



ELEVATION ALONG CONKLIN PLACE
1/16" = 1'-0"



WEST ELEVATION
1/16" = 1'-0"

Revisions
Issued- July 11, 2011

Project Title
1001 University Avenue
Madison, WI

Drawing Title
EXTERIOR ELEVATIONS

Project No.

1037

Drawing No.

A-2.1



Revisions
City Plan Review - April 20, 2011
City Plan Review (Resubmit) - AUGUST 31, 2011
UDC - OCTOBER 26, 2011

Project Title
1001 University Avenue
Madison, WI

Drawing Title
**Elevation Along
University Ave.**

Project No. Drawing No.

1037

A-2.2

ELEVATION ALONG UNIVERSITY
1/8" = 1'-0"

Consultant

Notes



Revisions
City Plan Review - April 20, 2011
City Plan Review (Resubmit) - AUGUST 31, 2011
UDC - OCTOBER 26, 2011

Project Title
1001 University Avenue
Madison, WI

WEST ELEVATION
1/8" = 1'-0"

Drawing Title
West Elevation

Project No. Drawing No.

1037 A-2.3

This document contains confidential or proprietary information of Knothe & Bruce Architects. Neither the document nor the information herein is to be reproduced, distributed, used, or disclosed, either in whole or in part, except as specifically authorized by Knothe & Bruce Architects. Knothe & Bruce Architects is a Limited Liability Company of Wisconsin.

Consultant

Notes



Revisions

City Plan Review - April 20, 2011
City Plan Review (Resubmit) - AUGUST 31, 2011
UDC - OCTOBER 26, 2011

Project Title

1001 University Avenue
Madison, WI

Drawing Title

**Elevation Along
Conklin Place**

Project No.

1037

Drawing No.

A-2.4

ELEVATION ALONG CONKLIN PLACE
1/8" = 1'-0"

Consultant

Notes



Revisions

City Plan Review - April 20, 2011
City Plan Review (Resubmit) - AUGUST 31, 2011
UDC - OCTOBER 26, 2011

Project Title

1001 University Avenue
Madison, WI

Drawing Title

**Elevation Along
Brooks Street**

Project No.

1037

Drawing No.

A-2.5

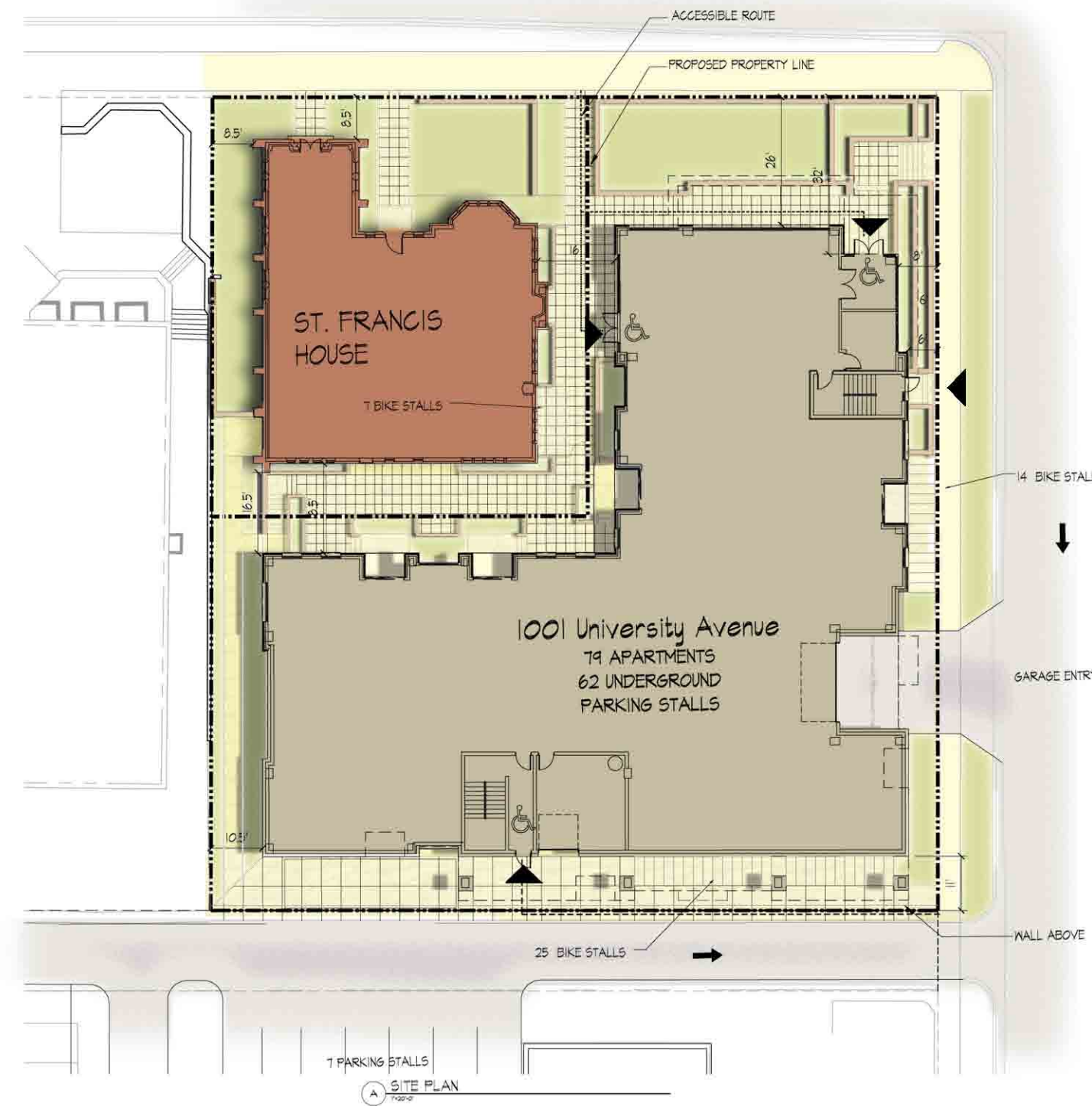
ELEVATION ALONG BROOKS STREET
1/8" = 1'-0"



1001 University Development
University Elevation

October 26, 2011

UNIVERSITY AVENUE



Project Summary

Dwelling Unit Mix:	
One-Bedroom	8
Two-Bedroom	20
Three-Bedroom	20
Four-Bedroom	23
Five-Bedroom	8
Total Dwelling Units	79

Areas:	
Total Gross Floor Area	90,668 S.F.

Densities:	
Lot Area	24,661 or .57 acres

Building Height: Eight Stories

Vehicle Parking:	
Underground-Residential	62 stalls

Bike Parking:	
Underground-Residential 2'x6'	50 stalls
Underground-Residential Wall Hung	104 stalls
On site-2'x6'	46 stalls
Total	200 stalls

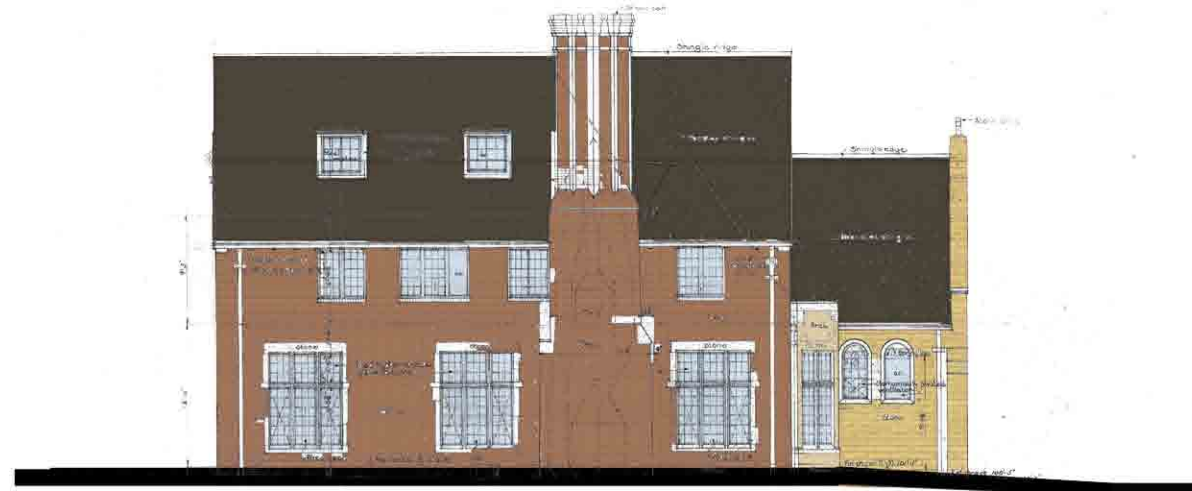
Moped Parking:	
Underground-Residential	39 stalls
Total	39 stalls

1001 University Development
Site Plan

October 26, 2011



NORTH ELEVATION



EAST ELEVATION



WEST ELEVATION



SOUTH ELEVATION

1001 University Development
St. Francis House

October 26, 2011

**KNOTHE
& BRUCE**
architects

Project # 1037