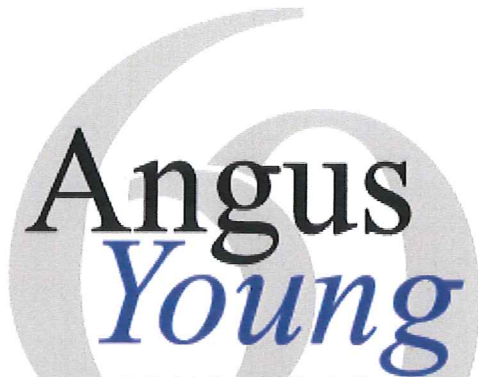




PELTON PLACE
RESIDENCES



1956-2016

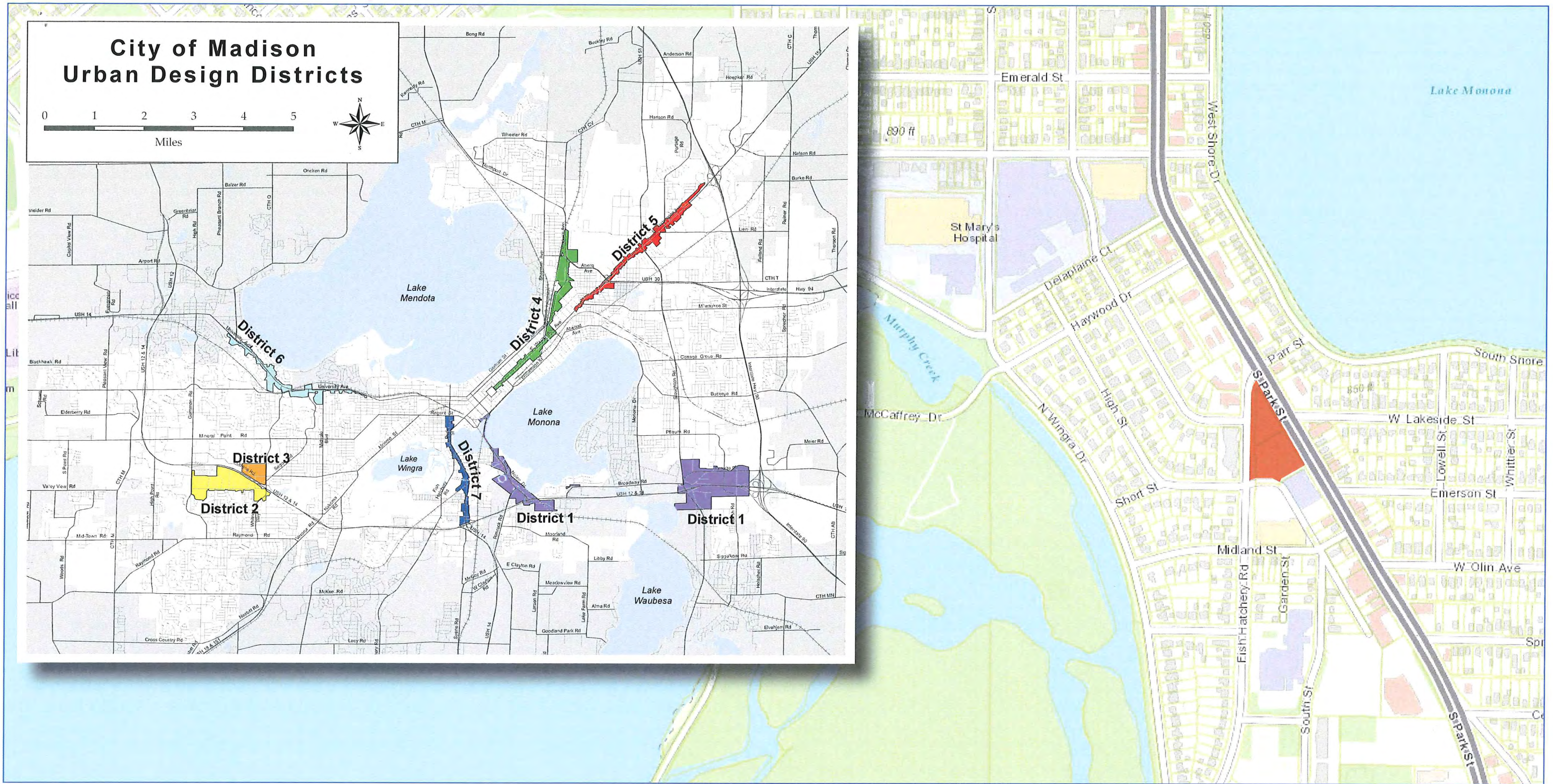
Balance in Creativity

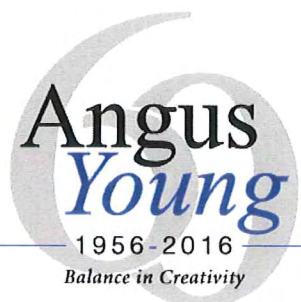
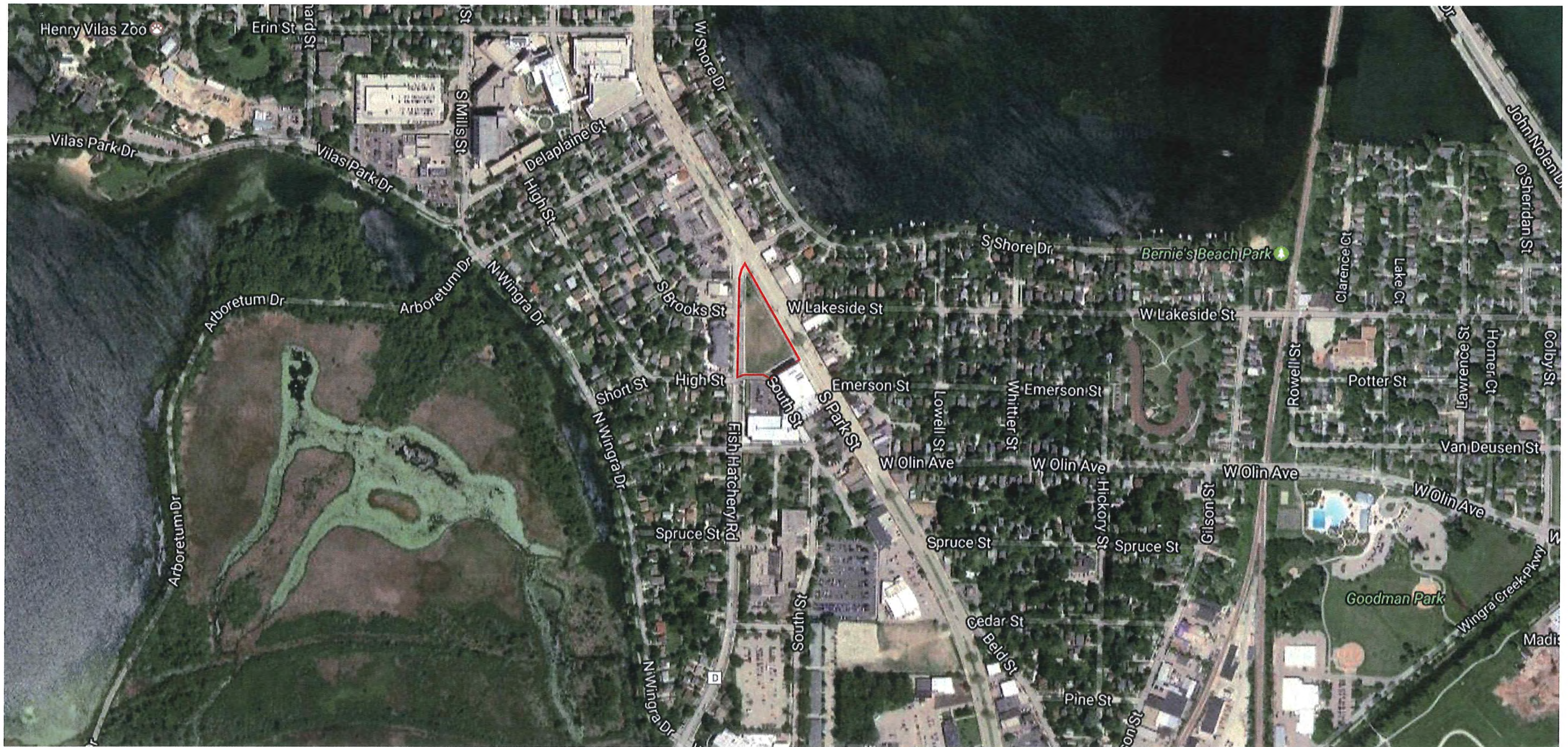
Peloton Place Residences
Peloton Residences, LLC

Urban Design Commission
Initial and Final Approval Submittal
and
Land Use Application Submittal

Jeff Davis
Angus-Young Associates
jeffd@angusyoung.com
608.284.8225

Jon Hepner
Peloton Residences, LLC
jon@twallenterprises.com
608.444-5552

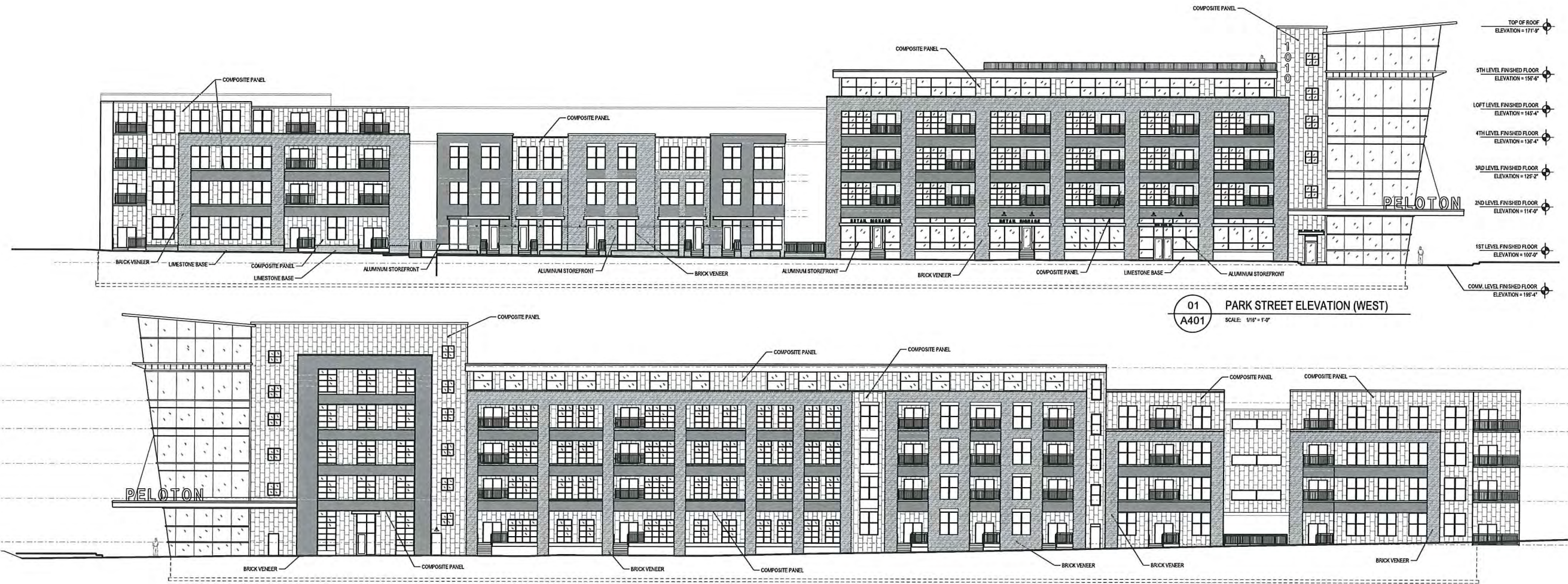




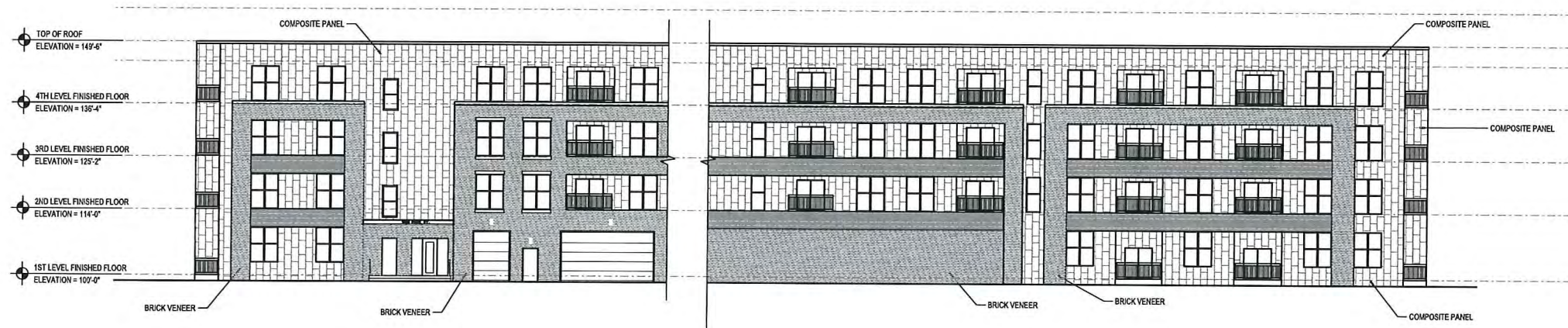
ZONED PUD-SIP

1010 PARK STREET · URBAN DESIGN DISTRICT 7 · PELTON PLACE RESIDENCES

August 18, 2017



Exterior Materials:
 Limestone Base
 Brick Veneer
 Composite siding and flat panel
 Fiberglass and Vinyl Windows for residential
 Aluminum storefront for commercial
 Aluminum curtainwall at prow
 Aluminum trim and fascia



01 SOUTH STREET ELEVATION (SOUTH)
A401 SCALE: 1/16" = 1'-0"

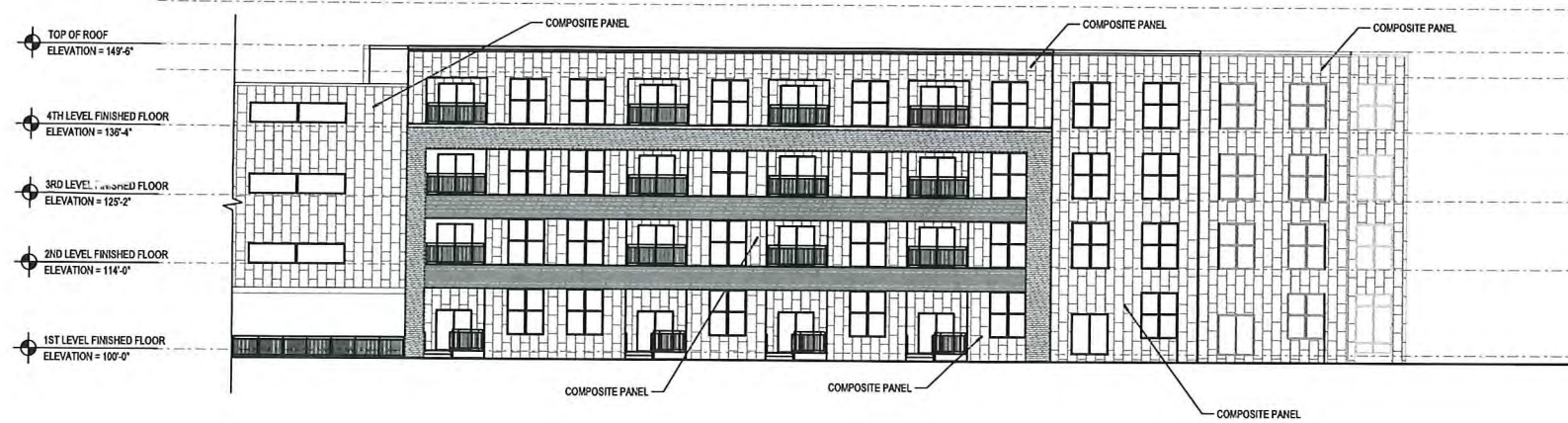
- Exterior Materials:
- Limestone Base
 - Brick Veneer
 - Composite siding and flat panel
 - Fiberglass and Vinyl Windows for residential
 - Aluminum storefront for commercial
 - Aluminum curtainwall at prow
 - Aluminum trim and fascia



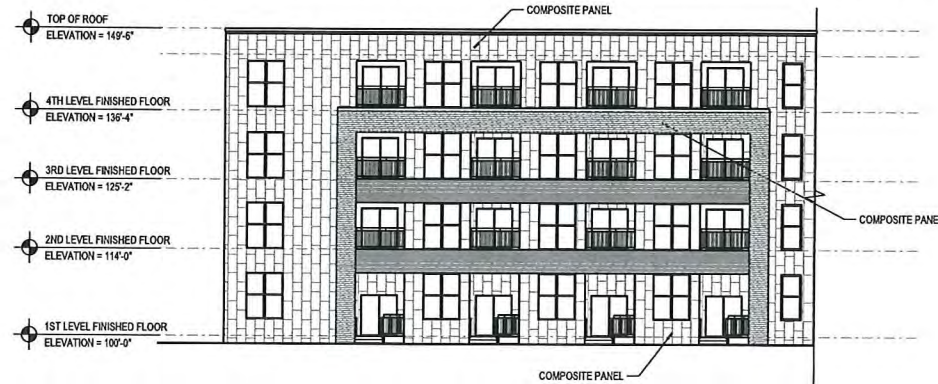
SOUTH ELEVATIONS

1010 PARK STREET · URBAN DESIGN DISTRICT 7 · PELTON PLACE RESIDENCES

August 18, 2017



02 INTERIOR COURTYARD (WEST)
A401 SCALE: 1/16" = 1'-0"



03 INTERIOR COURTYARD (SOUTH)
A401 SCALE: 1/16" = 1'-0"

Exterior Materials:
 Limestone Base
 Brick Veneer
 Composite siding and flat panel
 Fiberglass and Vinyl Windows for residential
 Aluminum storefront for commercial
 Aluminum curtainwall at prow
 Aluminum trim and fascia



Angus
Young
1956-2016
Balance in Creativity


PELTON PLACE
RESIDENCES

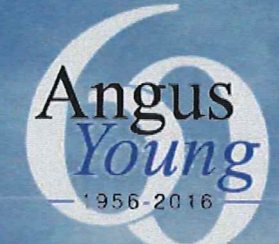
Angus
Young
1956-2016
Balance in Creativity

PROPOSED PERSPECTIVE RENDERINGS - Prow

1010 PARK STREET · URBAN DESIGN DISTRICT 7 · PELTON PLACE RESIDENCES

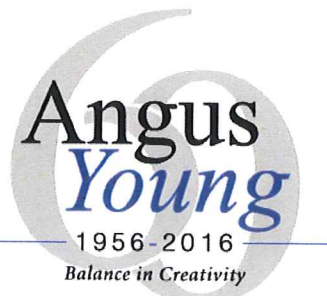
August 18, 2017





Balance in Creativity


PELTON PLACE
RESIDENCES



Balance in Creativity

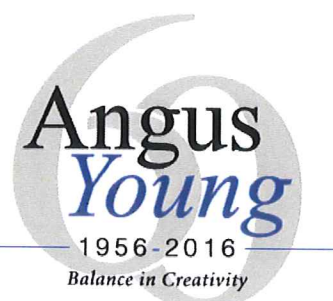
PROPOSED PERSPECTIVE RENDERINGS - Prow

1010 PARK STREET · URBAN DESIGN DISTRICT 7 · PELTON PLACE RESIDENCES

August 18, 2017




PELTON PLACE
RESIDENCES


**Angus
Young**
1956-2016
Balance in Creativity

PROPOSED PERSPECTIVE RENDERINGS - Fish Hatchery

1010 PARK STREET · URBAN DESIGN DISTRICT 7 · PELTON PLACE RESIDENCES

August 18, 2017




PELTON PLACE
RESIDENCES

Angus
Young
1956-2016
Balance in Creativity

PROPOSED PERSPECTIVE RENDERINGS - Live/Work

1010 PARK STREET · URBAN DESIGN DISTRICT 7 · PELTON PLACE RESIDENCES

August 18, 2017









Angus
Young
1956-2016
Balance in Creativity


PELTON PLACE
RESIDENCES

Angus
Young
1956-2016
Balance in Creativity

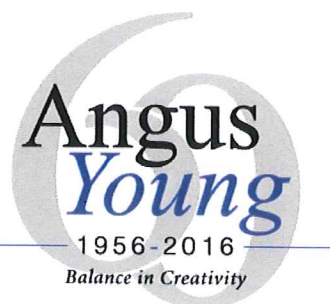
PROPOSED PERSPECTIVE RENDERINGS - Park Street

1010 PARK STREET · URBAN DESIGN DISTRICT 7 · PELTON PLACE RESIDENCES

August 18, 2017



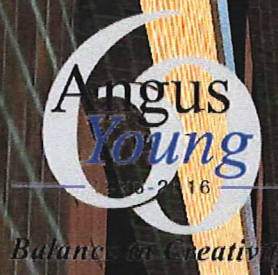

PELTON PLACE
RESIDENCES


**Angus
Young**
1956-2016
Balance in Creativity

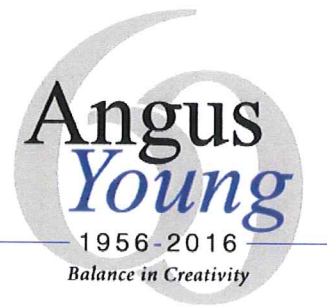
PROPOSED PERSPECTIVE RENDERINGS - South Street

1010 PARK STREET · URBAN DESIGN DISTRICT 7 · PELTON PLACE RESIDENCES

August 18, 2017




PELTON PLACE
RESIDENCES



PROPOSED PERSPECTIVE RENDERINGS - Courtyard

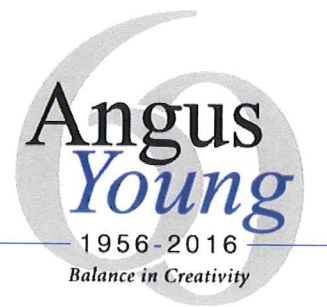
1010 PARK STREET · URBAN DESIGN DISTRICT 7 · PELTON PLACE RESIDENCES

August 18, 2017






PELTON PLACE
 RESIDENCES



PROPOSED PERSPECTIVE RENDERINGS - Courtyard

1010 PARK STREET · URBAN DESIGN DISTRICT 7 · PELTON PLACE RESIDENCES

August 18, 2017