



# 2017 EAB Plan Update

Presentation to Madison Common Council: January, 2018

# Objectives

- Provide update on the 2017 activities as they relate to the plan
- Provide information on planned 2018 activities
- Answer Council questions

# Value of the Urban Forest

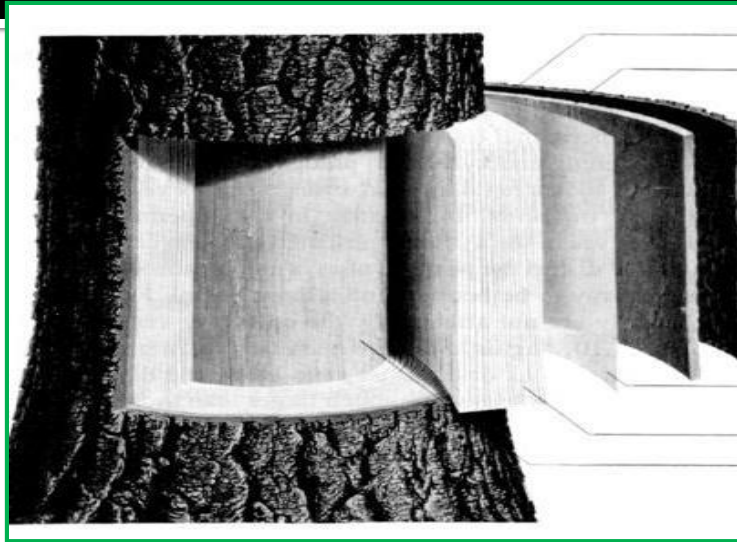
- Every year public street trees provide benefits equal to **\$11.7 Million**.
- For every \$1 spent on street trees the city receives **\$3.35** of benefits in return.
- Madison's street trees intercept **115 Million** gallons of rainfall every year =enough to fill **17** Olympic-sized pools annually.

# Ash trees in Our Community

- Average life span of an ash street tree is 30 to 40 years.
- Landscape and street trees increase property values.
- Contribute to the quality of life in a neighborhood
- Estimate: 22% of Madison's street trees are ash (or 22,000 trees).
- Estimate: 20,000 or more ash trees on Park Property.
- Estimate: 30% of Madison's privately owned trees are ash (30,000).
- Estimate: 5.4 Million ash trees in Wisconsin.



# How EAB harms ash trees



*emerald ash borer*  
*madison, wisconsin*



# Dealing with EAB



- Needed integrated solution
- Plan needed for state agencies, City operations, policy decision-makers and city residents and property owners
- Defined Plan
  - Response to infestation—evaluate/recommend options
  - Identify staffing & equipment needs
  - Communication vehicle for all stakeholders
  - Reinforce mission of preserving the urban forest

# EAB Task Force Members

## ■ **PARKS DIVISION**

- Eric Knepp, Parks Superintendent
- Charles Romines, Asst. Parks Superintendent
- Ann Shea, PIO

## ■ **FORESTRY**

- Marla Eddy, City Forester
- Brittany Prosser, Forestry Program Assistant

## ■ **MAYOR'S OFFICE**

- Katie Crawley, Deputy Mayor

## ■ **QUALITY, ORGANIZATIONAL EFFECTIVENESS & SUSTAINABILITY**

- Karl van Lith, Org. Dev. & Training Officer

## ■ **STREETS DIVISION**

- Steve Schultz, Interim Streets Superintendent

## ■ **FLEET SERVICES**

- Mahanth Joishy, Fleet Service Superintendent

## ■ **PUBLIC WORKS**

- Rob Philips

## ■ **FINANCE**

- Betsy York, Finance Analyst
- Travis Martin, Finance Analyst





# 2013 Council Approved Response Plan

- Implement a chemical treatment program for terrace trees 10 inches diameter at breast height (DBH) and above, excluding trees in poor condition ~~or under power transmission lines.~~
- Preemptively remove ash street trees in poor condition. *Replace those trees.*
- Remove ash trees designated in poor condition ~~or under power transmission lines~~ during infrastructure maintenance projects. Offer property owners the option of removing fair or good condition ash street trees during infrastructure maintenance projects. *Replace those trees.*
- Adopt-A- Tree program for ash trees in ***city parks only*** that preserves legacy or high value trees and preserves tree canopy for environmental, economic or social reasons.



# Chemical Treatment

- Original 2-year treatment cycle was modified to 3-year cycle
- Product application rate was effective for three years per US Forest Service
- 10,724 street trees are in treatment.

# Street Tree Preemptive removals

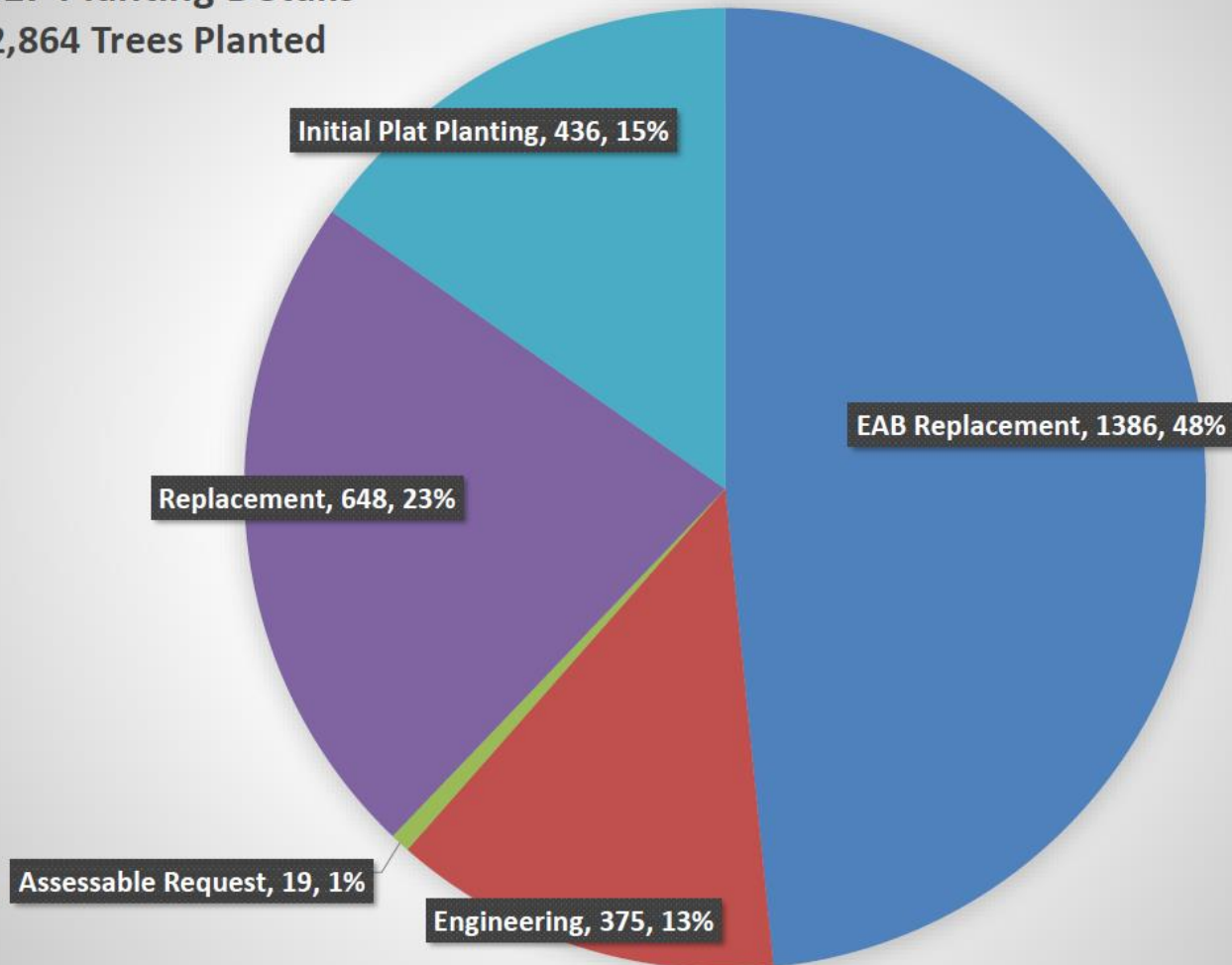
- Plan was 1,700 annually-now 2,000
- Dependent on infrastructure projects and weather impacts
- Approximately 6,200 removed thus far
- Approximately 4,500 remaining to be removed

# Street tree replacements

- Replant trees within three seasons after tree was remove
- Forestry plants both spring and fall
- 3,065 trees replaced thus far
- Approximately 48% of all tree replacements annually are EAB replacements

# Street Tree Planting Categories

2017 Planting Details  
2,864 Trees Planted



# Preemptive Removals in 2017

East	West	Engineering	Grand Total
872	786	116	1,774

# Stump Grubbing

- Done by Streets Division
- Integral to replanting process

	2017	2016	2015
<b>Stump Grubbing (removal)</b>	<b>2,750</b>	<b>3,146</b>	<b>2,746</b>

# Park Ash Trees

- New ash park adoptions will close at the end of 2017

	2017
Preemptive ash park/golf tree removals	1,310
Replanting	348
Adopt- a – Tree Program	254*

\* Note: Park adoptions in 2017 includes 42 new adoptions and 7 renewal adoptions.



# 2017 Achievements

- City staff continuing to meet with committees and neighborhood groups to educate on Forestry procedures, EAB and mitigation efforts
- Urban Forestry Taskforce approved
- Contract Grower with Johnson's Nursery, Inc to plant specific numbers and species in quantities that will deliver 1,990 trees in 2018. (Through 2020)

# 2017 Achievements

- Partnership with Wisconsin Urban Wood (WUW) continued for reuse and recycle of ash tree removals (173 logs)
- Emergency tree work done as needed. For example, the Oct 7<sup>th</sup> tornado had 41 ROW trees removed.

# 2017 Achievements

- Continuing to follow Integrated Pest Management (IPM) focusing on pest prevention and use of pesticides only as needed to limit impact on water systems and pollinators
- Continue to monitor other invasive pests.
  - In spring 2017, a total of 187 acres were treated for gypsy moth.
  - Nearest known Asian Longhorned Beetle infestation is in Clermont County, Ohio.

# Future considerations

Due to the necessary work mitigating EAB, other Forestry services such as non-emergency request work and annual pruning cycles are being negatively impacted. The EAB taskforce will continue to discuss the impacts of this and what to do with the postponed work in 2019 and beyond.

Questions?

Thank you