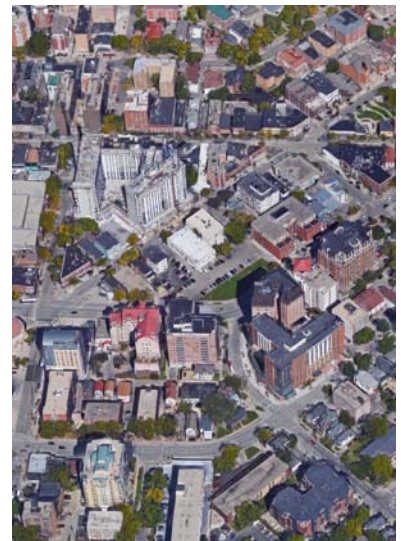




# UrbanFootprint

Growth scenario modeling tool = analysis of the impacts of different styles of growth



Images from: Google Maps

# UrbanFootprint

## 1. Public Health

Active transportation & related health conditions

How place impacts people

## 2. Transportation

Mode split; VMT

## 3. Greenhouse Gas Emissions

Due to transportation & power generation

## 4. Energy & Water Use

Residential gal/year and residential BTU/year

## 5. Land Consumption

Rural-to-urban square miles

## 6. Fiscal Impacts

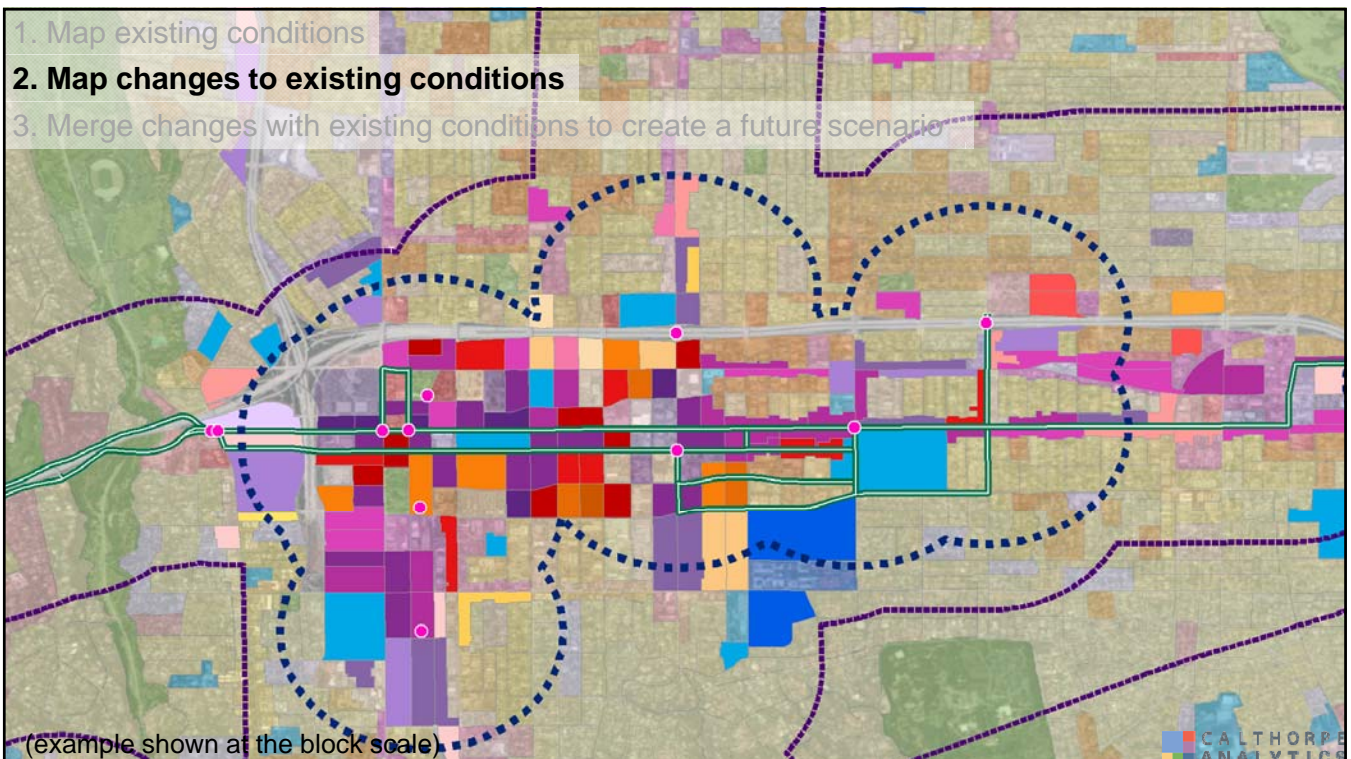
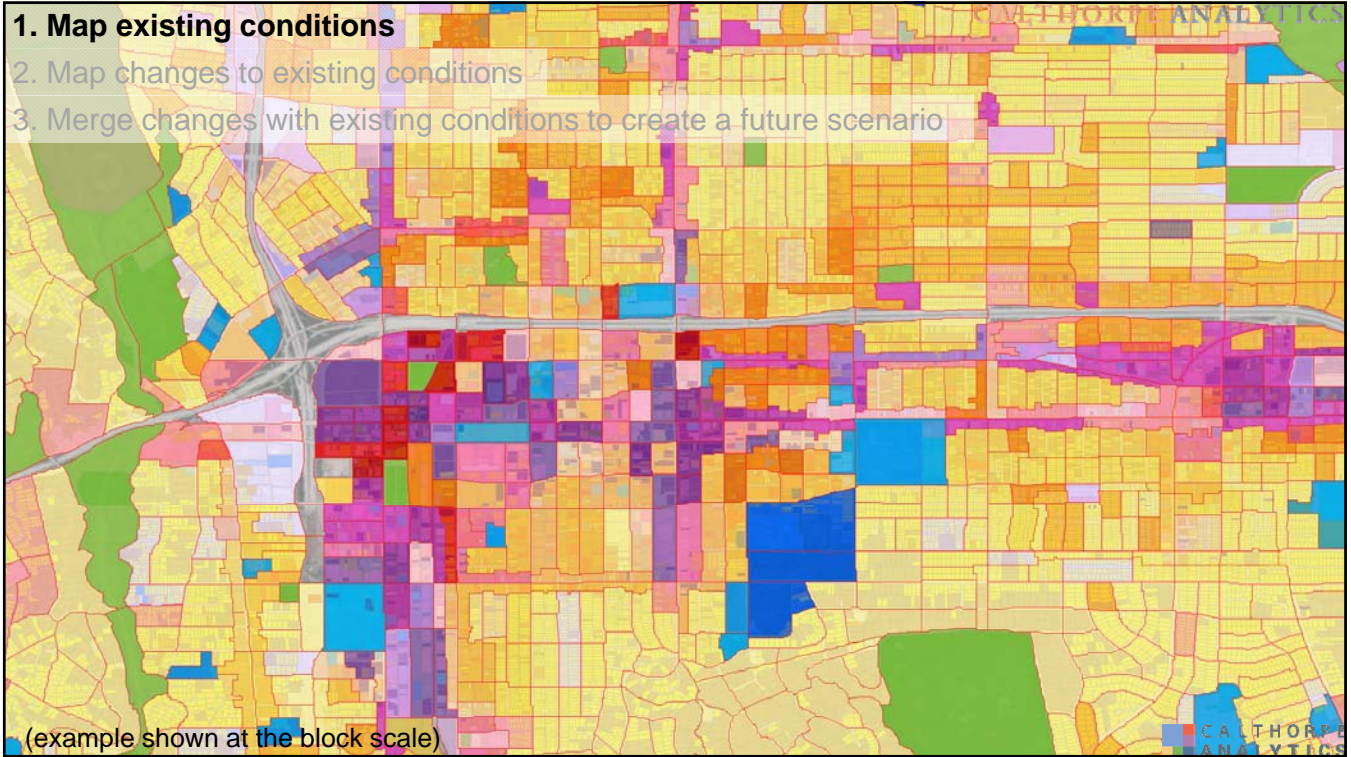
Municipal impacts (roads, utilities, fire dept)

Household impacts (transportation, energy, water)

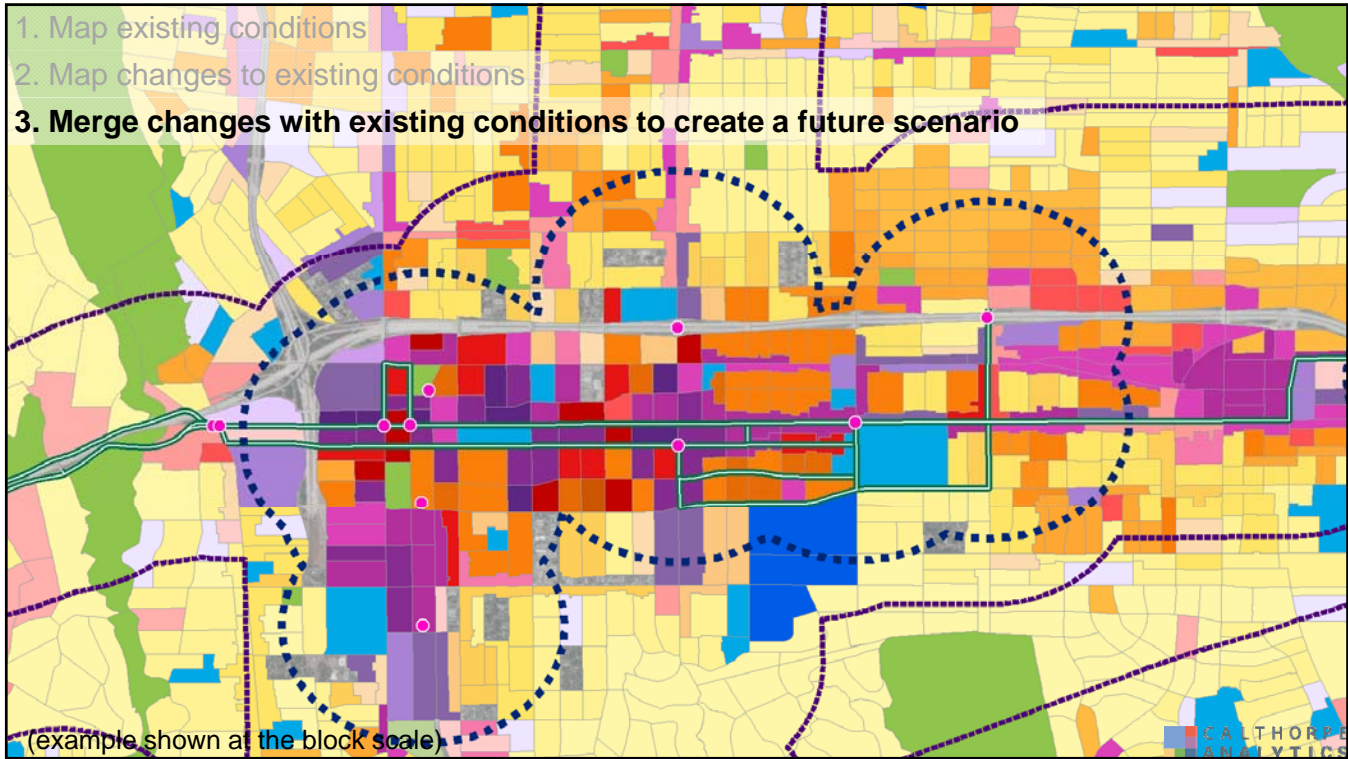
# How Does UrbanFootprint Work?



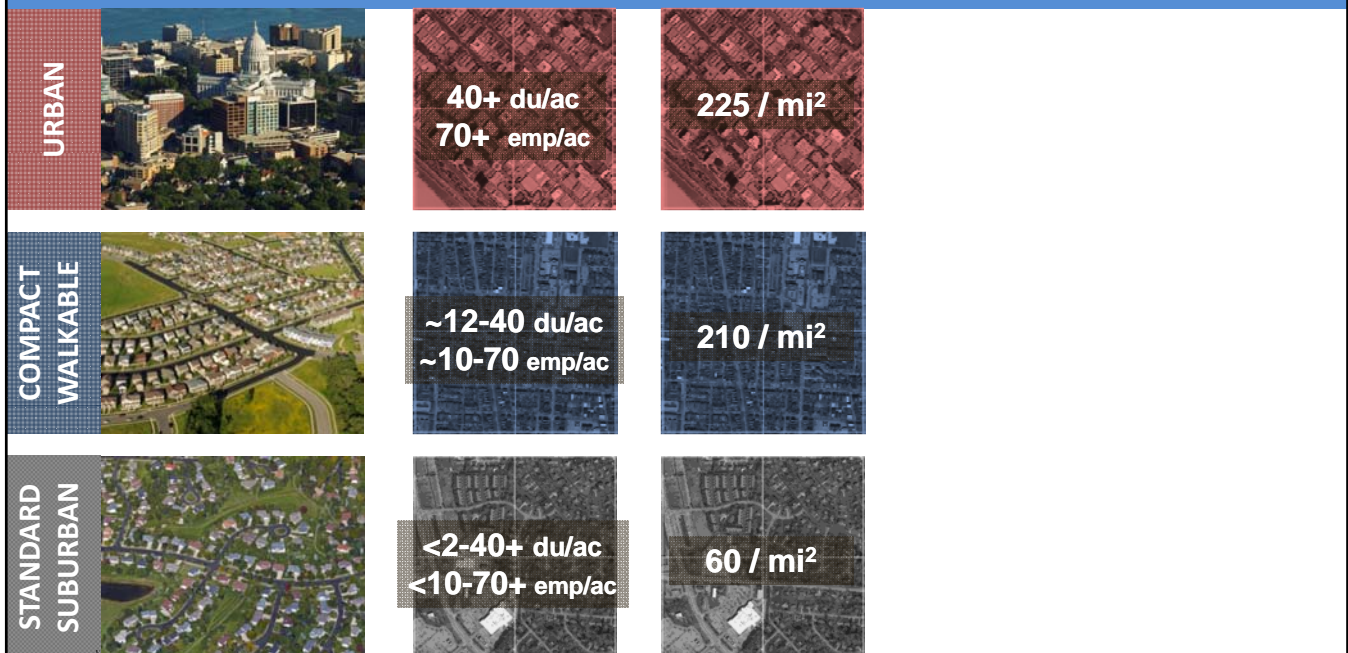


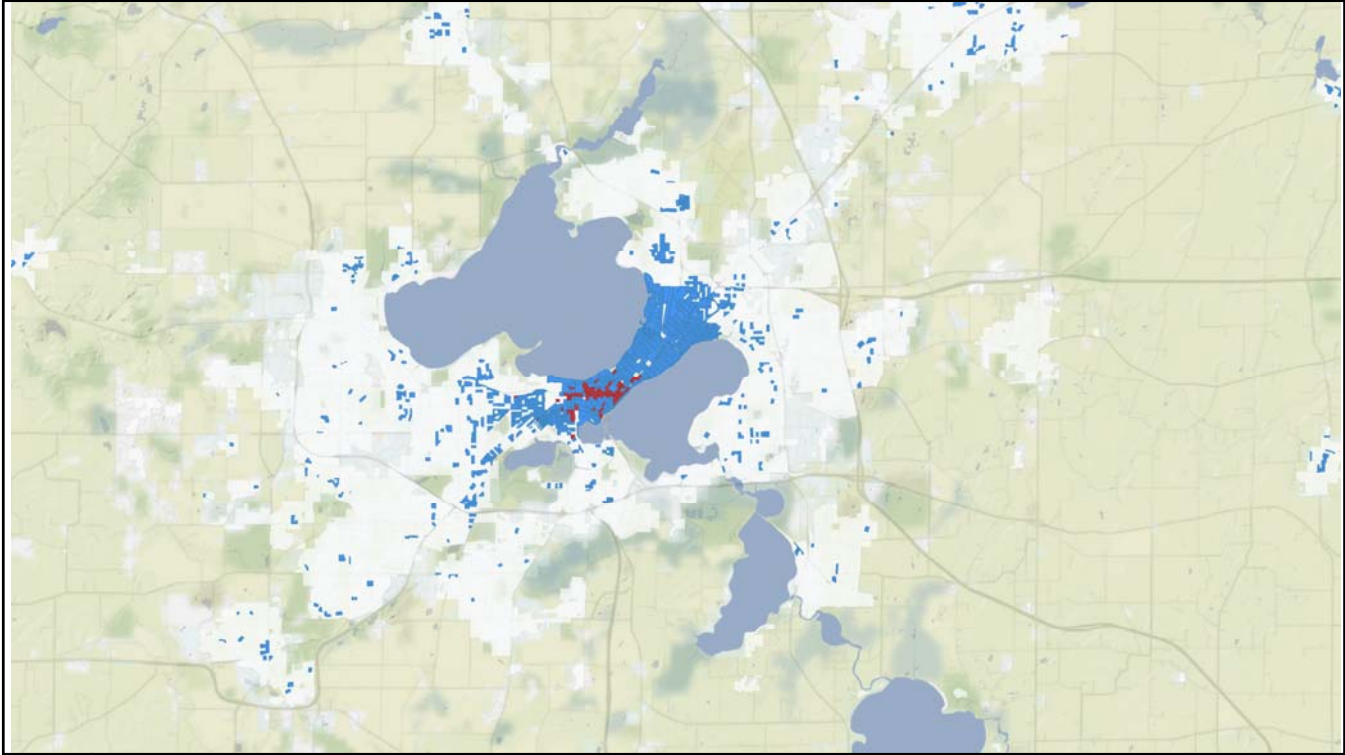






## Land Development Categories





\* Driving & HH energy, water energy use  
^ Transp., bldg. energy, bldg water





# Health Outcomes Related to LDCs

DRAFT

*Dane County, 2015*

Health Outcome	Urban	Compact	Suburban
Adult – BMI*	26.9	27.4	28.3
Adult – Overweight	37.6%	42.9%	53.1%
Adult – Obese	15.9%	17.6%	22.0%
Adult – High Blood Pressure	11.4%	14.8%	23.3%
Adult – Heart Disease	1.2%	1.5%	2.3%
Adult – Type 2 Diabetes	3.3%	4.1%	6.3%

\* Normal weight: 18.5 to 25, overweight: 25 to 30, obese: over 30

## Countywide Test Scenarios

### Scenario #1: Suburban Trend

Modified version of MPO RTP scenario; approximates 2000-2010 growth pattern

(more single family, more greenfield development)

*(Most Suburban)*

### Scenario #2: Enhanced Redevelopment

MPO RTP scenario; approximates 2010-2015 growth pattern

(more multifamily, more redevelopment)

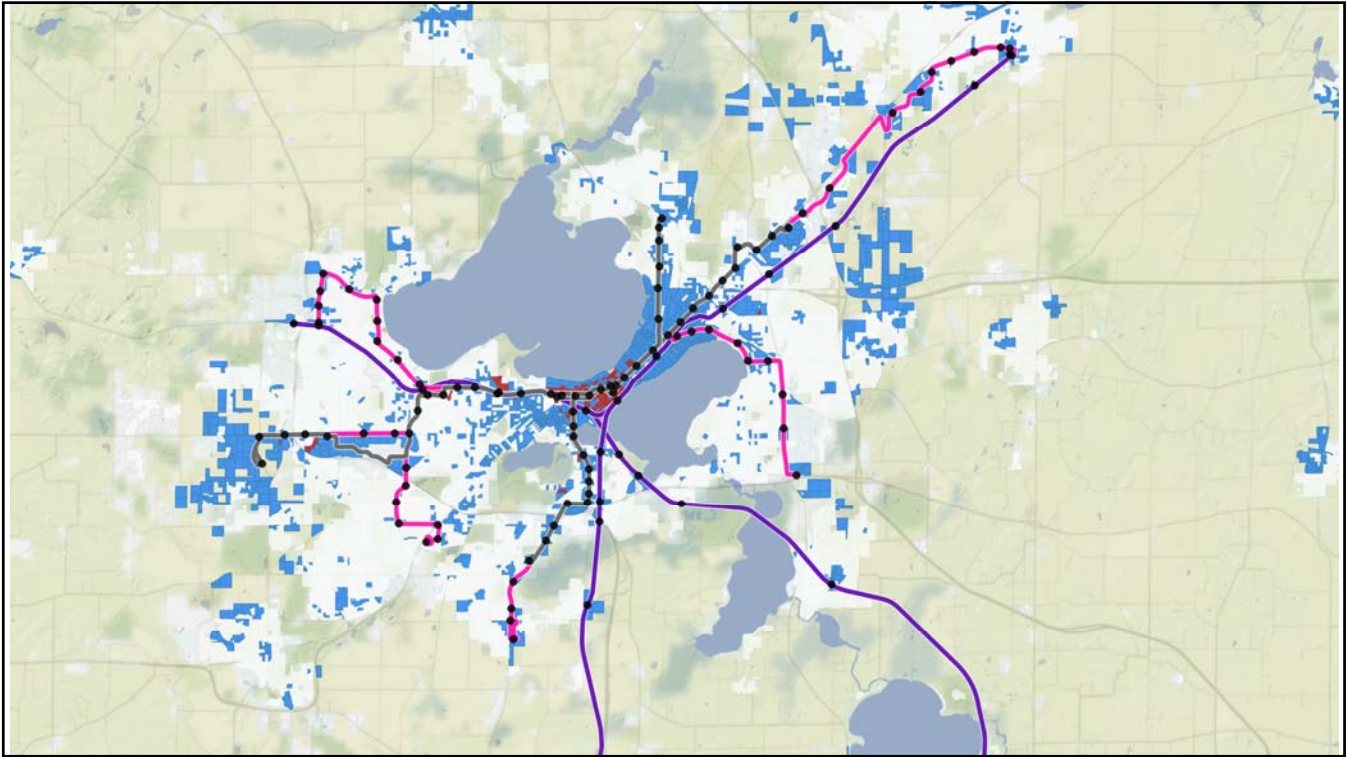
### Scenario #3: Concentrated Redevelopment

MiM TMP scenario; focused redevelopment

(greater percentage of redevelopment than is currently occurring)

*(Most Urban)*

Growth from 2015-2050 kept constant in all three scenarios at: +177,000 population; +81,000 HH; +87,000 employees.

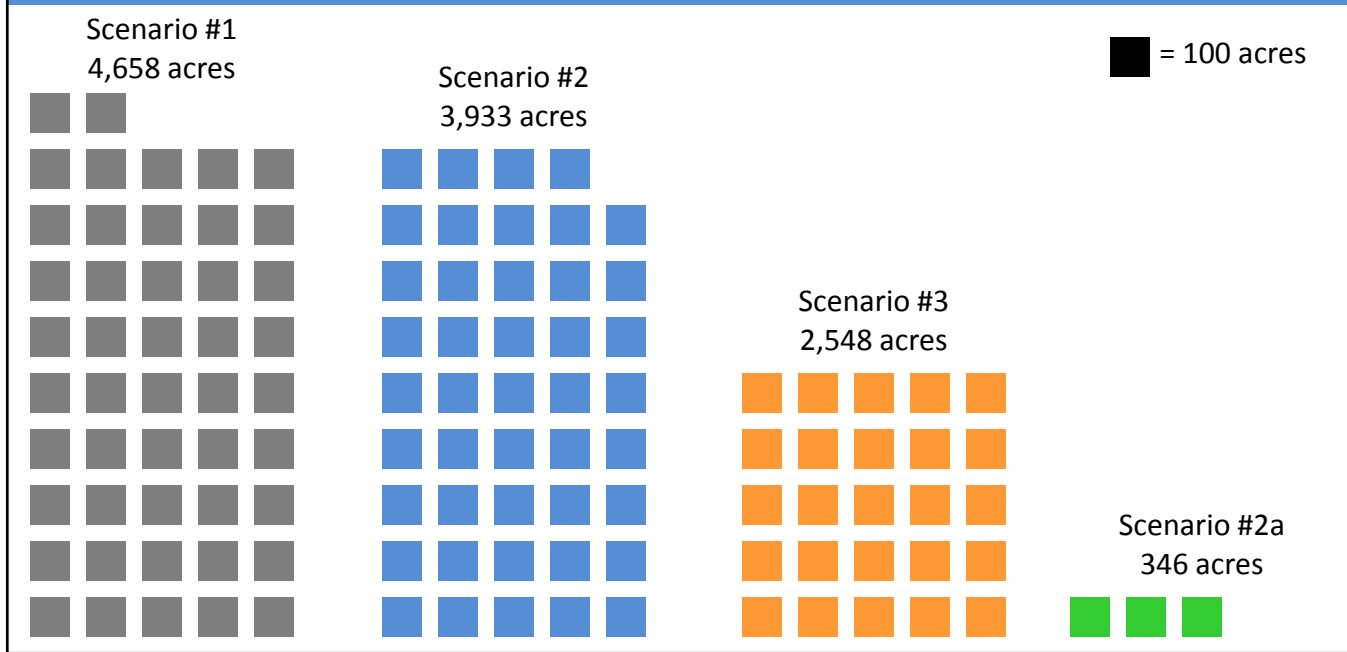


## Land Consumption

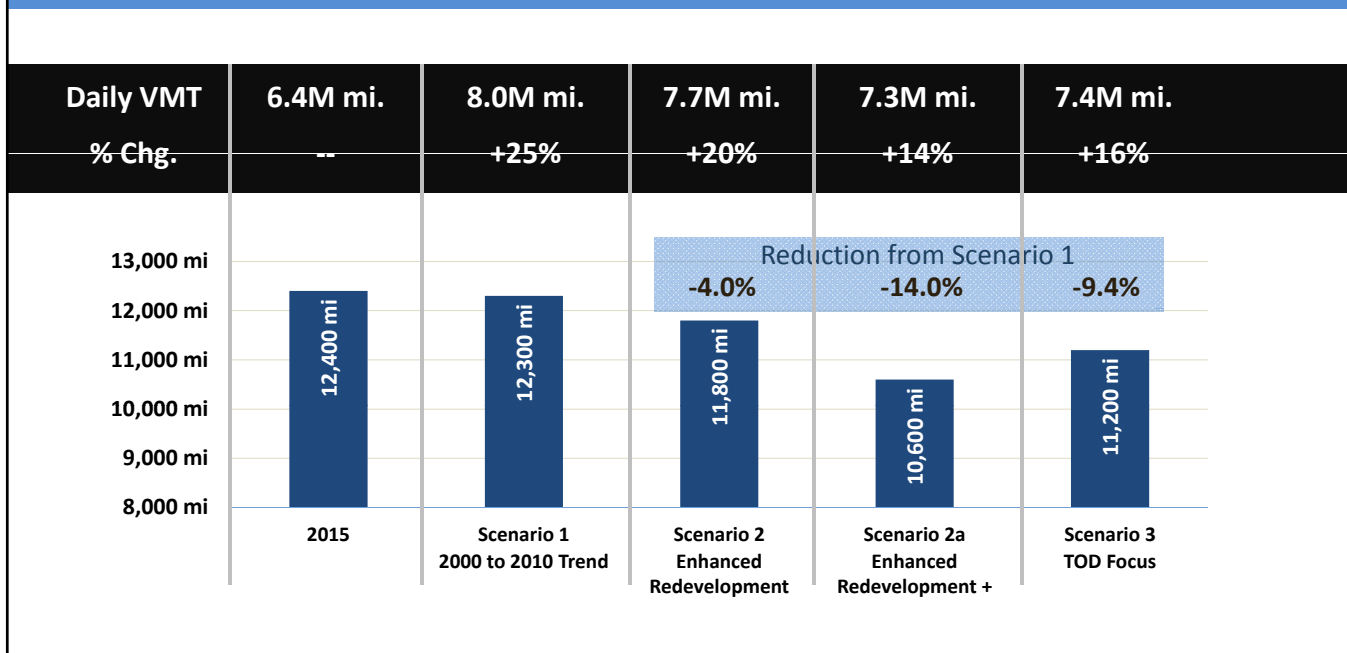




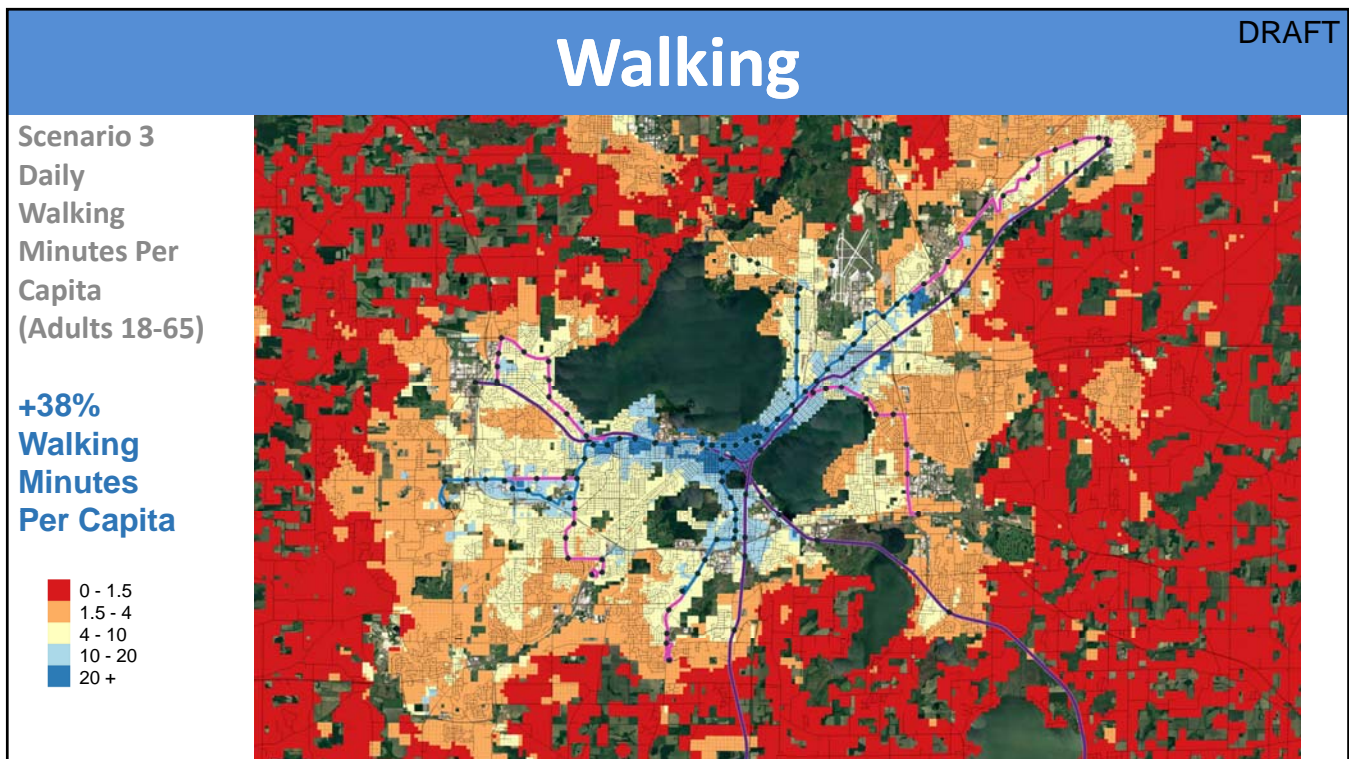
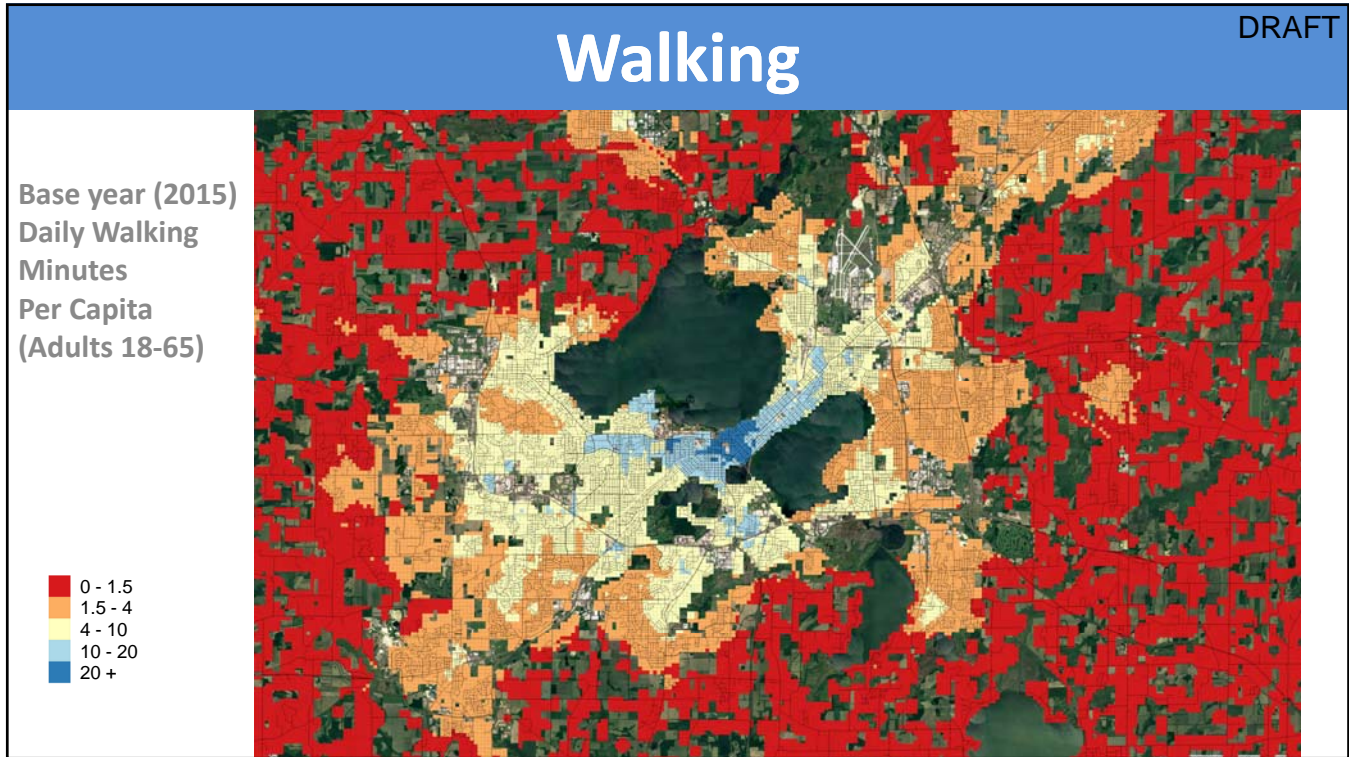
# Land Consumption: City of Madison, 2050



# Household Driving in City of Madison









# UrbanFootprint Use

- TOD-scale planning.



# Questions?

