


City of Madison Resurfacing Program



12/5/2016 1

City Engineering Division RESURFACING PROGRAM

- Resurface about 3 miles of streets throughout the City
- Resurfacing program which includes resurfacing, crack filling, mill/overlay and seal coat is designed to improve the quality of the street and delay the need for total reconstruction
- Deficient C&G sections are replaced
- Terraces are restored (topsoil, seed & mulch)
- Pavement is milled or pulverized
- New layer(s) of asphalt are paved
- Project Highlights

12/5/2016 2

SELECTION PROCESS

- How are streets selected for resurfacing?
- Streets rated bi-annually
 - ▣ PASER Scale (UW-Madison)
- Coordination with other public works projects
- Group streets around City for cost/efficiency

12/5/2016 3

RATING SYSTEM

- PASER rates streets from 1 – 10
- Resurface streets with a pavement rating of 5 or less and a c&g rating of 6 or greater
- Reconstruct streets with lower ratings (these streets require extensive replacement and not cost effective for resurfacing)

12/5/2016 4

State of Our Streets

All Streets:	2001	2010	2011	2012	2013	2014	2015
Total Miles	682.35	789.14	771.59	773.08	777.05	779.69	784.79
Total Lane Miles	1715.31	1794.75	1741.78	1741.78	1739.29	1733.97	1732.64
Average Section Year	1992	1991	1992	1992	1993	1994	1994
Average Curb Rating	6.86	7.19	7.28	7.29	7.29	7.29	7.28
Average Pavement Rating	6.53	6.93	7.01	6.93	6.85	6.88	6.84

All Streets by Class	2001	2010	2011	2012	2013	2014	2015
Arterial Streets							
Total Miles	75.21	93.35	94.35	94.35	94.80	94.97	95.46
Total Lane Miles	342.57	325.93	327.98	328.84	328.84	328.66	328.54
Average Section Year	1996	1996	2000	2001	2001	2002	2002
Average Curb Rating	7.64	7.87	7.78	7.78	7.85	7.85	7.86
Average Pavement Rating	6.98	7.22	7.28	7.32	7.33	7.33	7.30
Collector Streets							
Total Miles	153.99	166.48	166.55	166.62	167.13	168.58	169.30
Total Lane Miles	397.19	378.54	379.29	379.29	381.19	373.56	369.65
Average Section Year	1997	1996	1997	1998	1998	1999	2000
Average Curb Rating	7.05	7.23	7.31	7.32	7.49	7.39	7.40
Average Pavement Rating	6.80	7.00	7.16	6.98	6.95	6.98	6.84
Local Streets							
Total Miles	453.18	589.31	511.69	512.32	515.12	516.72	520.54
Total Lane Miles	1078.54	1028.54	1031.89	1034.59	1040.20	1038.41	1045.64
Average Section Year	1989	1988	1989	1990	1990	1991	1992
Average Curb Rating	6.07	6.29	6.52	6.54	6.46	6.38	6.32
Average Pavement Rating	6.18	6.76	6.84	6.73	6.71	6.71	6.65

740 miles of streets. Ave curb and pavement rating is 7

12/5/2016 5

State of Our Streets

Arterial, Collector and Local	2001	2010	2011	2012	2013	2014	2015
% Miles at or below Cond State 10	100.0%	100.0%	100.0%	100.0%	100.0%	100.0%	100.0%
% Miles at or below Cond State 9	94.3%	97.4%	96.6%	97.1%	98.3%	98.5%	97.7%
% Miles at or below Cond State 8	87.7%	89.9%	87.3%	89.4%	90.9%	92.2%	93.4%
% Miles at or below Cond State 7	65.0%	63.2%	60.0%	55.7%	55.6%	66.2%	62.0%
% Miles at or below Cond State 6	57.2%	37.4%	34.1%	34.6%	33.8%	38.8%	40.7%
% Miles at or below Cond State 5	32.1%	24.0%	24.1%	24.0%	24.0%	25.2%	24.6%
% Miles at or below Cond State 4	9.3%	6.5%	7.7%	9.9%	10.8%	12.9%	14.4%
% Miles at or below Cond State 3	1.8%	0.7%	0.9%	0.9%	1.0%	2.1%	2.7%
% Miles at or below Cond State 2	0.7%	0.0%	0.0%	0.0%	0.0%	0.1%	0.1%
% Miles at or below Cond State 1	0.6%	0.0%	0.0%	0.0%	0.0%	0.0%	0.0%
% Miles at or below Cond State 0	0.3%	0.0%	0.0%	0.0%	0.0%	0.0%	0.0%

Goal (26%) is centered around the number of streets rated at or below 5.

12/5/2016 6

State of Our Arterial Streets

Arterial	2001	2010	2011	2012	2013	2014	2015
% Miles at or below Good State 10	100.0%	100.0%	100.0%	100.0%	100.0%	100.0%	100.0%
% Miles at or below Good State 9	98.3%	92.0%	87.2%	88.8%	97.3%	97.6%	98.0%
% Miles at or below Good State 8	87.0%	76.6%	69.3%	73.9%	80.0%	84.7%	89.8%
% Miles at or below Good State 7	58.4%	47.0%	36.1%	41.6%	44.7%	60.4%	56.4%
% Miles at or below Good State 6	46.3%	28.2%	17.9%	22.9%	24.4%	32.7%	37.8%
% Miles at or below Good State 5	23.3%	15.8%	10.2%	10.0%	11.2%	16.3%	18.8%
% Miles at or below Good State 4	2.0%	8.1%	3.6%	4.6%	5.0%	6.3%	7.1%
% Miles at or below Good State 3	0.5%	0.8%	1.0%	1.0%	0.2%	1.9%	2.8%
% Miles at or below Good State 2	0.0%	0.0%	0.0%	0.0%	0.0%	0.0%	0.0%
% Miles at or below Good State 1	0.0%	0.0%	0.0%	0.0%	0.0%	0.0%	0.0%
% Miles at or below Good State 0	0.0%	0.0%	0.0%	0.0%	0.0%	0.0%	0.0%

Goal: less than 15% of total miles of local streets at or below 5

12/5/2016

7

State of Our Collector Streets

Collector	2001	2010	2011	2012	2013	2014	2015
% Miles at or below Good State 10	100.0%	100.0%	100.0%	100.0%	100.0%	100.0%	100.0%
% Miles at or below Good State 9	94.2%	76.9%	95.9%	98.2%	98.8%	98.2%	94.4%
% Miles at or below Good State 8	86.1%	89.0%	87.4%	89.0%	90.9%	92.3%	90.8%
% Miles at or below Good State 7	58.3%	48.2%	44.2%	52.3%	51.4%	64.0%	58.8%
% Miles at or below Good State 6	48.0%	32.4%	30.9%	32.0%	33.1%	39.8%	39.0%
% Miles at or below Good State 5	17.0%	19.3%	16.0%	19.3%	21.1%	22.7%	18.0%
% Miles at or below Good State 4	6.0%	4.7%	4.2%	8.0%	9.1%	10.9%	9.1%
% Miles at or below Good State 3	0.3%	0.8%	1.0%	1.3%	1.0%	4.8%	2.9%
% Miles at or below Good State 2	0.0%	0.0%	0.0%	0.0%	0.0%	0.0%	0.0%
% Miles at or below Good State 1	0.0%	0.0%	0.0%	0.0%	0.0%	0.0%	0.0%
% Miles at or below Good State 0	0.0%	0.0%	0.0%	0.0%	0.0%	0.0%	0.0%

Goal: less than 20% of total miles of collector streets at or below 5

12/5/2016

8

State of Our Local Streets

Local	2001	2010	2011	2012	2013	2014	2015
% Miles at or below Good State 10	100.0%	100.0%	100.0%	100.0%	100.0%	100.0%	100.0%
% Miles at or below Good State 9	93.9%	98.6%	98.9%	98.2%	98.3%	98.8%	98.1%
% Miles at or below Good State 8	88.3%	92.6%	90.5%	91.8%	92.9%	93.0%	94.9%
% Miles at or below Good State 7	68.2%	56.0%	51.4%	59.4%	59.0%	70.8%	64.1%
% Miles at or below Good State 6	61.8%	49.7%	38.1%	37.4%	35.8%	39.0%	41.8%
% Miles at or below Good State 5	31.9%	19.3%	22.8%	28.1%	29.1%	27.0%	27.0%
% Miles at or below Good State 4	11.6%	6.7%	9.0%	11.3%	12.4%	16.2%	17.2%
% Miles at or below Good State 3	2.4%	0.6%	0.5%	0.8%	1.1%	2.8%	2.7%
% Miles at or below Good State 2	0.9%	0.0%	0.0%	0.0%	0.0%	0.1%	0.1%
% Miles at or below Good State 1	0.8%	0.0%	0.0%	0.0%	0.0%	0.0%	0.0%
% Miles at or below Good State 0	0.4%	0.0%	0.0%	0.0%	0.0%	0.0%	0.0%

Goal: less than 30% of total miles of arterial streets at or below 5

12/5/2016

9

Curb & Gutter

⇒ What is the purpose of curb & gutter?

- Drainage
- Define parking
- Keep terrace intact

12/5/2016

10

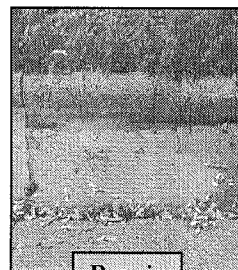
Selection Criteria

- ⇒ Look for 6 different types of problems in c&g:
- ⇒ Vertical Offset
- ⇒ Horizontal Offset
- ⇒ Water Ponding
- ⇒ Curb Head
- ⇒ Tipped Curb
- ⇒ Pitted Concrete

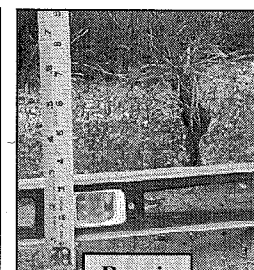
12/5/2016

11

Vertical Offset



Repair

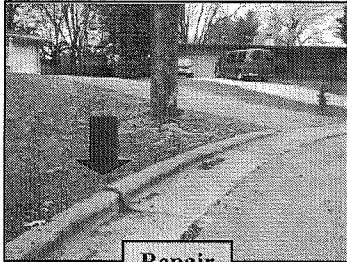


Repair

12/5/2016

12

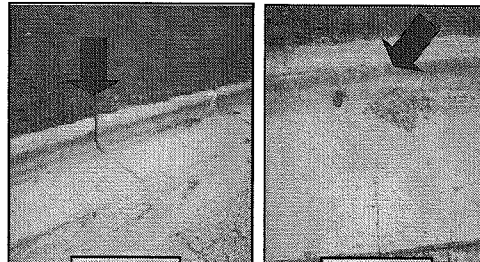
Horizontal Offset



12/5/2016

13

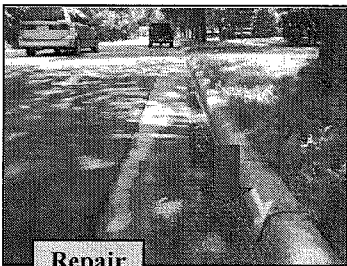
Cracks



12/5/2016

14

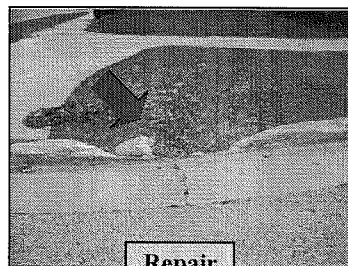
Water Ponding



12/5/2016

15

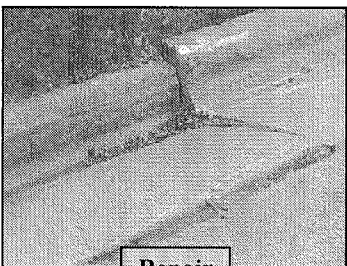
Curb Head



12/5/2016

16

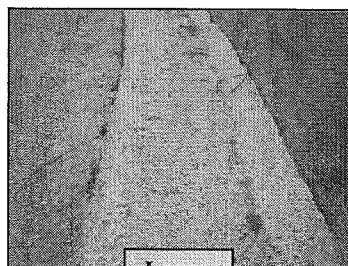
Tipped Curb



12/5/2016

17

Pitted Concrete



12/5/2016

18

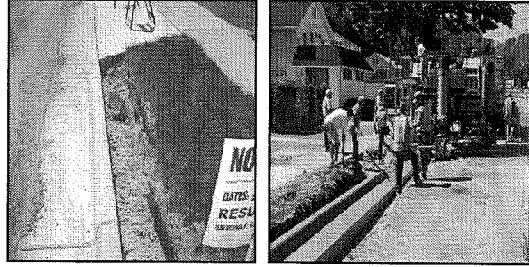
Assessments

- ⇒ Cost split with property owner and City
- ⇒ Curb & Gutter work associated with storm sewer inlets is not assessed to property owners
- ⇒ Public hearings at Board of Public Works and Common Council meetings
- ⇒ Pay assessment in full the year invoiced or pay installments over an eight year period

12/5/2016

19

CURB & GUTTER CONSTRUCTION

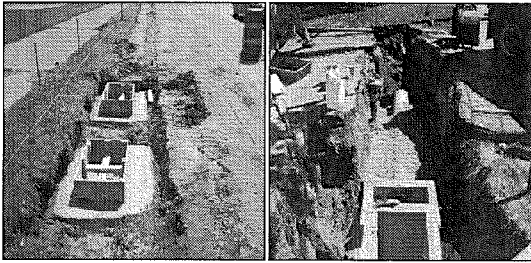


- ⇒ HAND PLACED C&G VS. MACHINE PLACED C&G

12/5/2016

20

STORM SEWER CONSTRUCTION

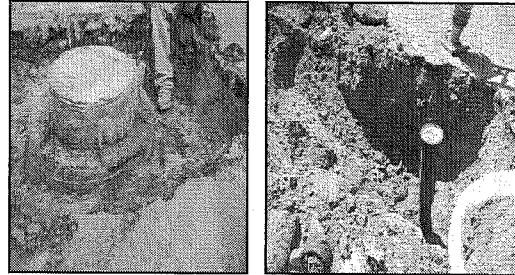


- ⇒ REBUILDING INLETS
- ⇒ INSTALLING NEW INLET AND PIPE

12/5/2016

21

UTILITY CASTING ADJUSTMENTS

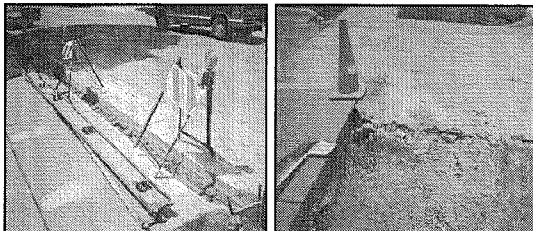


- ⇒ ADJUSTING CASTING
- ⇒ ADJUSTING WATER VALVE BOX

12/5/2016

22

DRIVE APRON CONSTRUCTION

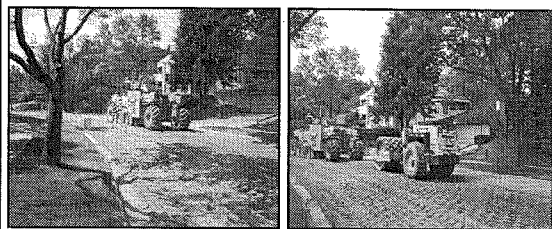


- ⇒ PARTIAL REPLACEMENT OF DRIVE APRON
- ⇒ FULL REPLACEMENT OF DRIVE APRON IN PHASES

12/5/2016

23

PAVEMENT PULVERIZING



- ⇒ ASPHALT AND GRAVEL BASE ARE PULVERIZED
- ⇒ NEW BASE IS GRADED AND COMPACTED
- ⇒ NEW BASE IS TEST ROLLED AND UNDERCUT
- ⇒ NEW BASE IS FINISHED ROLLED TO FINAL GRADE

12/5/2016

24

PAVEMENT PULVERIZING

↻ ROLLED AND COMPACTED BASE
 ↻ UNDERCUT SOFT AREA AFTER TEST ROLL

12/5/2016 25

PAVEMENT MILLING

↻ MILLING OPERATION
 ↻ SOFT AREA THAT WILL BE UNDERCUT OR BASE PATCHED

12/5/2016 26

PAVEMENT MILLING - UNDERCUT

↻ TEST ROLL PAVEMENT
 ↻ EXCAVATE SOFT AREAS
 ↻ PLACE BREAKER RUN STONE OR ASPHALT

12/5/2016 27

ASPHALT PAVING

↻ TACK COAT APPLIED TO LOWER ASPHALT LAYER
 ↻ PAVING FINAL LIFT OF ASPHALT

12/5/2016 28

ASPHALT PAVING & RESTORATION

↻ ASPHALT PAVING
 ↻ RESTORATION OF TERRACES AFTER C&G INSTALLED

12/5/2016 29

City Engineering Division RESURFACING PROGRAM

- PUBLIC INFORMATION MEETINGS: Nov 30 & Dec 1.
- TONIGHT IS THE APPROVAL OF 3 CONTRACTS
 - CURB AND GUTTER REPLACEMENT WITH RESURFACING
 - PULVERIZING & PAVING WITH RESURFACING
 - PATCHING
- PUBLIC HEARING ON ASSESSMENTS TONIGHT
- COMMON COUNCIL HEARING JANUARY 4, 2017
- SURFACE PAVING NINE PLAT PHASES: CITY COST SHARE FOR IMPROVEMENTS TO EXISTING STREETS
- PAVEMENT PATCHING/MILLING/OVERLAY CITYWIDE
- 2017 BUDGET IS \$2,938,000, ASSESSMENTS \$80,500

12/5/2016 30