



plant guide: | [home](#) | [view plants by genus](#) | [view all plants](#) | [advanced plant finder](#) | [wholesale contact](#) |



Ginkgo biloba

Ginkgo 'Windover Gold'

Plant type: tree

Size: 40'H x 25'W

Shape: broadly pyramidal to oval

Plant Zones: 4-8

Fall Color: golden yellow

Flower: insignificant

Fruit: fruitless

Feature: foliage and fall color

Sun/Shade: full sun

Description:

A broadly pyramidal male clone with stout branching.

[Click on photo\(s\) to enlarge](#)

Copyright © 2017, Roy G. Klehm, Beaver Creek Nursery, inc. All rights reserved.

Emerald Spire® Columnar Crabapple



An outstanding compact, columnar crabapple with disease-resistant, copper-green foliage, large pink flowers in spring and sparse red fruit in fall.

Botanical Name: *Malus x 'Jefgreen'*

Family: Rosaceae

Common Name: Emerald Spire® Columnar Crabapple

Origin: An open-pollinated seedling of T4 Crabapple believed to have 'Selkirk' as the male parent. T4 Crabapple arose from the cross Wijcik x Thunderchild made by Dr. David Lane of Summerland Research Station.

Hardiness: Zone 2 (Canadian and USDA)

Growth Rate: A slow-growing small tree. Mature size of 15' (5 m) x 6' (2 m).

Description: Emerald Spire® has a columnar tree form, and grows more slowly compared to the ornamental crabapple cultivars currently on the market today. It produces a lower number of flowers and fewer fruit. Its disease-free foliage is outstanding throughout the growing season.

Culture: Grows best in full sunlight or partial shade. Prefers well drained, medium textured soils with adequate moisture.

Pest and Disease: No specific problems. Excellent foliar resistance to apple scab.

Landscape Value: The most notable characteristics of Emerald Spire are its disease-free foliage and dwarf, columnar habit. It serves as an ideal accent tree or summer privacy screen.

Propagation: Budding on Crabapple. CVI budwood of Emerald Spire® Crabapple is available. Propagation by softwood cuttings may also prove successful.

Sales Potential: Emerald Spire® Crabapple is a significant addition to the prairie landscape. It has shown good winter hardiness and solid disease resistance in Manitoba for the last 5 years.

Production: Propagation of Emerald Spire® is not open to other growers at the present time. JNL Royalty of \$1.50 per plant. CPBRAFF, USPPAF

For additional information about Emerald Spire® Crabapple, contact:

Jeffries Nurseries Ltd.

P.O. Box 402, Portage la Prairie, Manitoba R1N 3B7

Phone: (204) 857-5288 Fax: (204) 857-2877 www.jeffriesnurseries.com



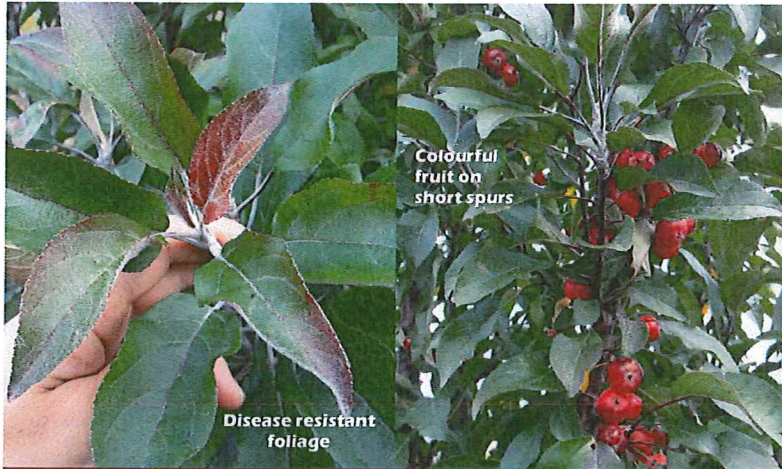
www.jeffriesnurseries.com



© Jeffries Nurseries Ltd., 2012

Emerald Spire® Crabapple *Malus x 'Jefgreen'*





Colourful fruit on short spurs

Disease resistant foliage

EMERALD SPIRE®



Dazzling spring flowers

Unique columnar growth habit



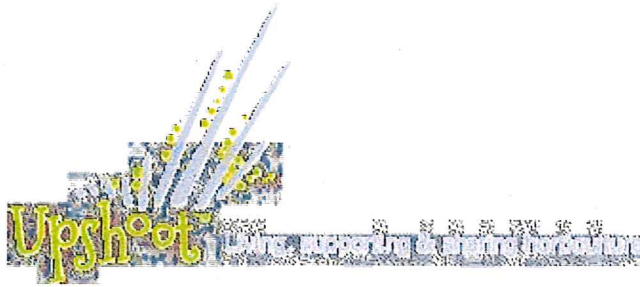
Emerald Spire®

Purple Spire®

The latest edition in the towering Spire® series
 Emerald Spire® offers a unique columnar growth habit for flowering crabapples in today's compact landscapes. This exciting new cultivar also features attractive pink spring flowers and outstanding foliar resistance to apple scab. A durable and colourful privacy screen!



Sign up for our Monthly E



- [HOME](#)
- [ABOUT US](#)
- [NEW PLANTS](#)
- [WRITING](#)
- [SERVICES](#)
- [EVENTS](#)
- [BLOG](#)
- [CONTACT](#)

- [PLANTS](#)
- [Press Releases](#)
- [Landscape Use](#)
- [Plant Articles](#)
- [Plant Testimonials](#)
- [Plant List and Forms](#)
 - [Associations](#)
- [Preferred Breeders / Plants We Represent](#)

Plants

[« Previous Plant](#)

[Next Plant »](#)

Mystic Ruby™ Buckeye

Mystic Ruby™ Buckeye
Aesculus x bushii 'Aaron 1' PPAF



Height & Spread	14' high x 6' spread
Shape	Oval
Flower	Pinkish-red
Fruit	Nut
Zone	5
Foliage	Dark Green
Features	<ul style="list-style-type: none"> – A red flowered Buckeye – Fair producer of nuts – Hardier than other red flowered Aesculus

'Aaron 1' is a buckeye tree that arose from a crop of open pollinated *Aesculus glabra* seedlings at Johnson's Nursery that were germinated in 1995 (crop #94S045). It was a chance seedling found by Aaron Jambura in 2003. *Aesculus pavia*, which was growing nearby the mother plants, is suspected to be the pollen parent.

What makes 'Aaron 1' unique is the fact that it has beautiful pinkish-red flowers on a tree that is considerably hardier than other red flowered Aesculus. In addition, the tree has excellent foliage qualities with minimal leaf blotch and leaf scorch problems in Southern Wisconsin.

The best performing red flowered Aesculus at Johnson's Nursery over the past 15 years, other than 'Aaron #1', has been *Aesculus x carnea* 'Fort McNair'. It has had less foliage problems than all other red flowered Aesculus grown at Johnson's Nursery. It has been readily available as a liner and has had a good demand in the marketplace. The winter of 2013-14 changed the game in that regard for red flowered Aesculus in our area. Virtually all of the *Aesculus x carnea* trees, 2" in caliper and smaller in the nursery, including the cultivar 'Fort McNair', were severely damaged or killed by the winter conditions that year. The 'Aaron 1' trees were not damaged. The potential value of this new cultivar has increased as a result.

The tree is small to medium sized in scale. The original plant has a 4-1/2" caliper trunk and is 14' tall by 6' wide at 21 years old. Plants grafted on *Aesculus glabra* in the summer of 2003 (crop-#03G003) are 2-1/2" in caliper and 12' tall by 3' wide in fall of 2015. So the plants are relatively slow growing even for a Buckeye. Understocks other than *Aesculus glabra* may be useful in increasing the cultivar's growth rate.

'Aaron 1' does produce a fair amount of nuts in most seasons and doesn't fall color to any extent in fall. The plant transplants readily and does best in full sun to partial shade with moist well drained soils.

This cultivar is co-owned by JN Plant Selections, LLC and Johnson's Nursery.

Copyright © 2017 UpShoot™ LLC. All rights reserved. Site by [BatesMeron](#).

Northern Acclaim[®] Thornless Honeylocust

Gledistia triacanthos var. *inermis* 'Harve' (Family: Fabaceae)

Description: A medium to large spreading upright pyramidal tree selection of thornless honeylocust with greater winter hardiness than the standard available cultivars in the nursery trade. Introduced by North Dakota State University, Northern Acclaim[®] is seedless and maintains attractive bright green foliage during the summer months changing to golden-yellow in the fall.

Hardiness: USDA hardiness zones 3b – 6

Mature Size: Height: 40 – 50', Spread: 30 – 35'

Form: Pyramidal to upright spreading with age.

Growth Rate: Moderate to Fast

Foliage:

Summer: Bright green Pinnately and bi-pinnately compound leaves producing a dappled shade during the summer months.

Autumn: Golden yellow fall color.

Texture: Fine-Medium in leaf, Medium in winter.

Flowers: Greenish-yellow racemes (male), insignificant.

Fruit: This cultivar is seedless (fruitless); it does not produce the pods associated with female honeylocust plants.

Light Preference: Full sun exposure.

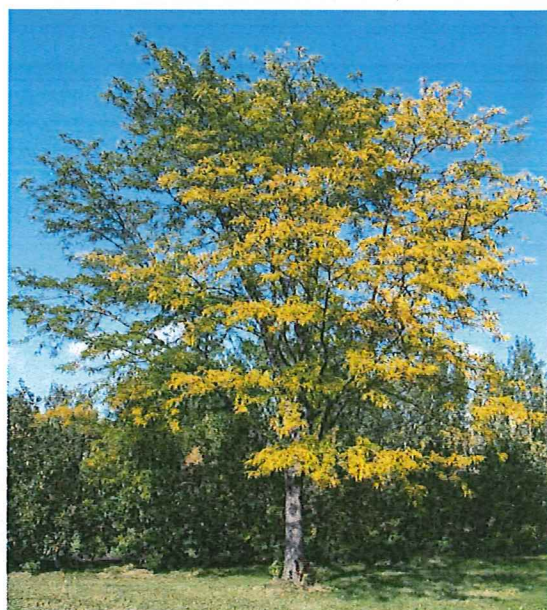
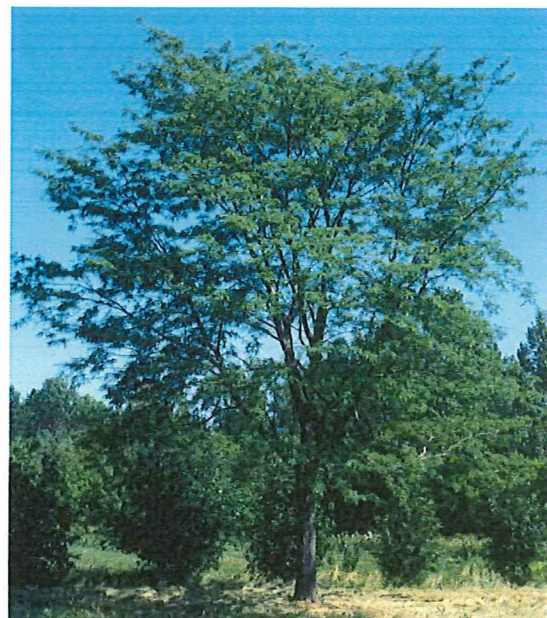
Soil Preference: Well drained soils, pH adaptable and tolerant of higher pH soils. Has shown good drought tolerance.

Propagation: Chip budding onto one-year field established rootstocks.

Ornamental Attributes: The pyramidal to upright spreading growth form combined with the thornless and seedless attributes and greater cold hardiness make Northern Acclaim[®] a valuable addition to the tree selections list for use in the central and northern US and southern Canada where adapted.

Landscape Attributes: Northern Acclaim[®] is an urban tolerant, turf friendly and drought tolerant selection. Minimum leaf litter, making autumn cleanup unnecessary. Uses for this cultivar are in landscape, boulevard, and parks plantings where an attractive hardy ornamental tree is desired. Resistant to canker disease.

Availability: Widely available in the wholesale and retail nursery industry.





Shingle Oak

Quercus imbricaria

Zone: 5

Height: 50'

Spread: 40'

Shape: Broadly oval

Foliage: Dark green, glossy

Fall Color: Yellow to rusty red

Native to the midwest and well adapted to conditions there, including calcareous soils. A large shade tree with beautiful summer foliage.



J. FRANK
SCHMIDT
& SON CO.

P.O. Box 189 • Boring OR 97009
503-663-4128 • Fax 503-663-2121

Toll-Free 1-800-825-8202 • Toll-Free Fax 1-800-283-7537

www.jfschmidt.com