

Transportation Commission (06.11.25)

Metro Transit

- Route 75 stop and trip updates
- Additional bus stop changes



metro transit



Request to Approve:

- Stop updates on Nesbitt Rd. related to D2 extension to Verona
- Reallocation of additional Route 75 trips to D2
- Other stop updates related to service changes and construction projects

D2 Extension

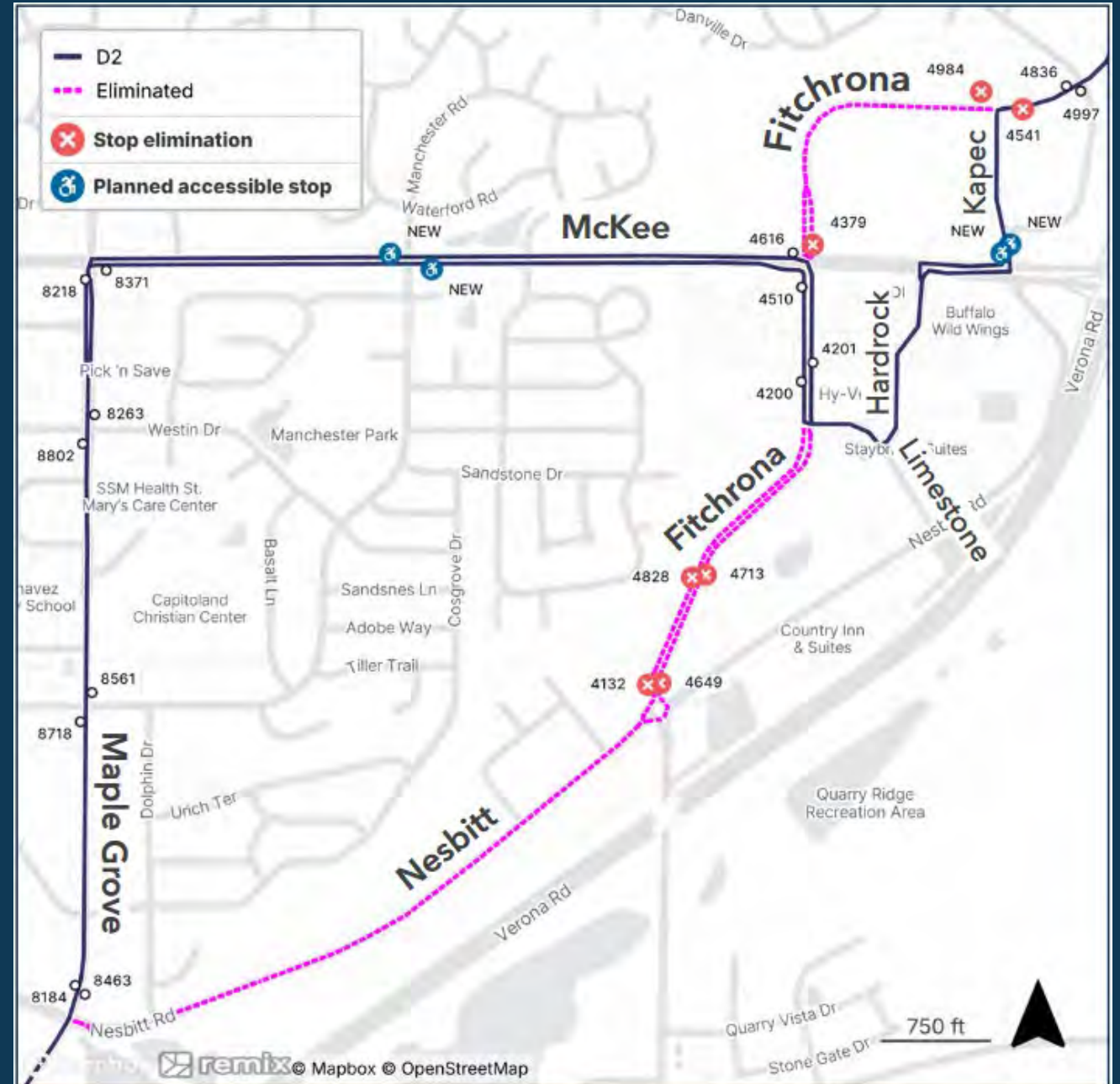
- Internal conversations and customer feedback caused the need for additional look at stop changes related to D2 extension
- Segment on Fitchrona Rd. north of McKee to Kapec proposed to be eliminated
- Two new stops on Kapec Rd. would replace 3 stops on Fitchrona Rd.
- Has generated feedback from The Point Apartments.



Fitchrona Stops Proposed for Deletion

ID	Stop Name	Direction	Google Walk to Closet Stop	Wkday boardings	Sat boardings	Sun boardings
4132	Fitchrona at Nesbit	Westbound	10 minutes to Hy-Vee/Target stop	0.05	0	0
4379	Fitchrona at McKee	Eastbound	1 minute to McKee/FR Stop (improvements planned)	4	2	7
4649	Fitchrona at Nesbitt	Eastbound	10 minutes to Hy-Vee/Target Stop	9	2	5
4713	Fitchrona at Crosswalk	Eastbound	7 minutes to Hy-Vee/Target Stop	0	0	0
4828	Fitchrona at Crosswalk	Westbound	7 minutes to Hy-Vee/Target Stop	0.2	1	0.3
4984	Fitchrona at Kapec	Westbound	3 minutes to King James Stop	0	0	0
4541	Fitchrona at Kapec	Eastbound	2 minutes to King James Stop	15	5	7

Fitchrona Stops Proposed for Deletion



Route 75 Trip Reallocations

In addition to Route 75 trips presented at public hearing, an additional 4 trips need to be reallocated to D2 service to Verona.



Route 75 trips presented at last meeting

ROUTE 75								
Weekday Eastbound								Epic // Pinckney & Main
From Route	Epic	Verona & Maple Grove Park N' Ride	McKee & Maple Grove	Fish Hatchery & Cadis	Fish Hatchery & Badger	Park & Erin	Pinckney & Main	To Route
	7	6	5	4	3	2	1	
75	6:40	6:49	6:55	7:04	-	-	-	75
55	6:50	6:59	7:05	7:14	7:19	7:24	7:34	75
75	7:10	7:19	7:25	7:34	-	-	-	75
55	7:20	7:29	7:35	7:44	7:49	7:54	8:04	75
75	7:40	7:49	7:55	8:04	-	-	-	75
55	7:50	7:59	8:05	8:14	8:19	8:24	8:34	GA
75	8:10	8:19	8:25	8:34	-	-	-	75
55	8:20	8:29	8:35	8:44	8:49	8:54	9:04	GA
75	8:40	8:49	8:55	9:04	9:09	9:14	9:24	GA
55	8:50	8:59	9:05	9:14	9:19	9:24	9:34	GA
75	9:15	9:24	9:30	9:39	9:44	9:49	9:59	GA
GA	4:45	4:54	5:00	5:09	5:14	5:19	5:29	75
75	4:55	5:04	5:10	5:19	-	-	-	75
55	5:05	5:14	5:20	5:29	5:34	5:39	5:49	GA
75	5:10	5:19	5:25	5:34	5:39	5:44	5:54	GA
55	5:20	5:29	5:35	5:44	5:49	5:54	6:04	GA
55	5:35	5:44	5:50	5:59	6:04	6:09	6:19	GA
75	6:00	6:09	6:15	6:24	6:29	6:34	6:44	GA
55	6:05	6:14	6:20	6:29	6:34	6:39	6:49	GA
55	6:35	6:44	6:50	6:59	7:04	7:09	7:19	GA

ROUTE 75								
Weekday Westbound								Pinckney & Main // Epic
From Route	Pinckney & Main	Park & Erin	Fish Hatchery & Badger	Fish Hatchery & Cadis	Maple Grove & McKee	Verona & Maple Grove Park N' Ride	Epic	To Route
	1	2	3	4	5	6	7	
GA	5:52	6:02	6:06	6:10	6:20	6:25	6:35	75
GA	6:07	6:17	6:21	6:25	6:35	6:40	6:50	55
GA	6:22	6:32	6:36	6:40	6:50	6:55	7:05	75
GA	6:37	6:47	6:51	6:55	7:05	7:10	7:20	55
75	-	-	-	7:10	7:20	7:25	7:35	75
GA	7:07	7:17	7:21	7:25	7:35	7:40	7:50	55
75	-	-	-	7:40	7:50	7:55	8:05	75
GA	7:27	7:37	7:41	7:45	7:55	8:00	8:10	55
75	7:42	7:52	7:56	8:00	8:10	8:15	8:25	55
75	-	-	-	8:10	8:20	8:25	8:35	75
75	8:12	8:22	8:26	8:30	8:40	8:45	8:55	55
75	-	-	-	8:45	8:55	9:00	9:10	75
GA	3:27	3:37	3:41	3:45	3:55	4:00	4:10	55
GA	3:57	4:07	4:11	4:15	4:25	4:30	4:40	55
GA	4:07	4:17	4:21	4:25	4:35	4:40	4:50	75
GA	4:22	4:32	4:36	4:40	4:50	4:55	5:05	75
GA	4:27	4:37	4:41	4:45	4:55	5:00	5:10	55
GA	4:57	5:07	5:11	5:15	5:25	5:30	5:40	55
75	-	-	-	5:30	5:40	5:45	5:55	75
75	5:37	5:47	5:51	5:55	6:05	6:10	6:20	55

Additional trips that need to be removed:

ROUTE 75

Weekday Eastbound

Epic // Pinckney & Main

From Route	Epic	Verona & Maple Grove Park N' Ride	McKee & Maple Grove	Fish Hatchery & Cadis	Fish Hatchery & Badger	Park & Erin	Pinckney & Main	To Route
	7	6	5	4	3	2	1	
75	6:40	6:49	6:55	7:04	-	-	-	75
55	6:50	6:59	7:05	7:14	7:19	7:24	7:34	75
75	7:10	7:19	7:25	7:34	-	-	-	75
55	7:20	7:29	7:35	7:44	7:49	7:54	8:04	75
75	7:40	7:49	7:55	8:04	-	-	-	75
55	7:50	7:59	8:05	8:14	8:19	8:24	8:34	GA
75	8:10	8:19	8:25	8:34	-	-	-	75
55	8:20	8:29	8:35	8:44	8:49	8:54	9:04	GA
75	8:40	8:49	8:55	9:04	9:09	9:14	9:24	GA
55	8:50	8:59	9:05	9:14	9:19	9:24	9:34	GA
75	9:15	9:24	9:30	9:39	9:44	9:49	9:59	GA
GA	4:45	4:54	5:00	5:09	5:14	5:19	5:29	75
75	4:55	5:04	5:10	5:19	-	-	-	75
55	5:05	5:14	5:20	5:29	5:34	5:39	5:49	GA
75	5:10	5:19	5:25	5:34	5:39	5:44	5:54	GA
55	5:20	5:29	5:35	5:44	5:49	5:54	6:04	GA
55	5:35	5:44	5:50	5:59	6:04	6:09	6:19	GA
75	6:00	6:09	6:15	6:24	6:29	6:34	6:44	GA
55	6:05	6:14	6:20	6:29	6:34	6:39	6:49	GA
55	6:35	6:44	6:50	6:59	7:04	7:09	7:19	GA

ROUTE 75

Weekday Westbound

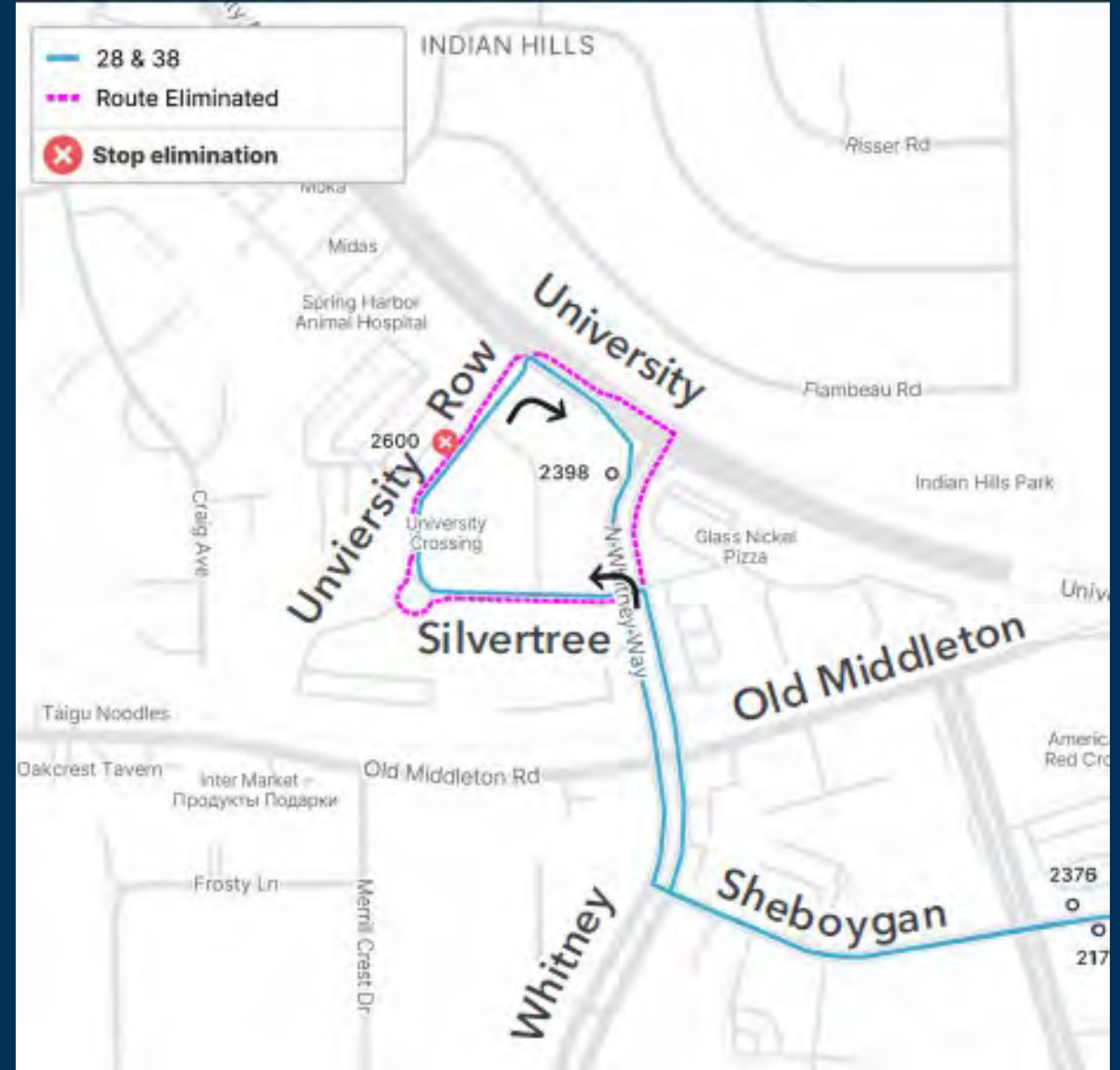
Pinckney & Main // Epic

From Route	Pinckney & Main	Park & Erin	Fish Hatchery & Badger	Fish Hatchery & Cadis	Maple Grove & McKee	Verona & Maple Grove Park N' Ride	Epic	To Route
	1	2	3	4	5	6	7	
GA	5:52	6:02	6:06	6:10	6:20	6:25	6:35	75
GA	6:07	6:17	6:21	6:25	6:35	6:40	6:50	55
GA	6:22	6:32	6:36	6:40	6:50	6:55	7:05	75
GA	6:37	6:47	6:51	6:55	7:05	7:10	7:20	55
75	-	-	-	7:10	7:20	7:25	7:35	75
GA	7:07	7:17	7:21	7:25	7:35	7:40	7:50	55
75	-	-	-	7:40	7:50	7:55	8:05	75
GA	7:27	7:37	7:41	7:45	7:55	8:00	8:10	55
75	7:42	7:52	7:56	8:00	8:10	8:15	8:25	55
75	-	-	-	8:10	8:20	8:25	8:35	75
75	8:12	8:22	8:26	8:30	8:40	8:45	8:55	55
75	-	-	-	8:45	8:55	9:00	9:10	75
GA	3:27	3:37	3:41	3:45	3:55	4:00	4:10	55
GA	3:57	4:07	4:11	4:15	4:25	4:30	4:40	55
GA	4:07	4:17	4:21	4:25	4:35	4:40	4:50	75
GA	4:22	4:32	4:36	4:40	4:50	4:55	5:05	75
GA	4:27	4:37	4:41	4:45	4:55	5:00	5:10	55
GA	4:57	5:07	5:11	5:15	5:25	5:30	5:40	55
75	-	-	-	5:30	5:40	5:45	5:55	75
75	5:37	5:47	5:51	5:55	6:05	6:10	6:20	55

Additional Stop Changes

University Row – Bus will change direction. Stop by Digestive Center will close.

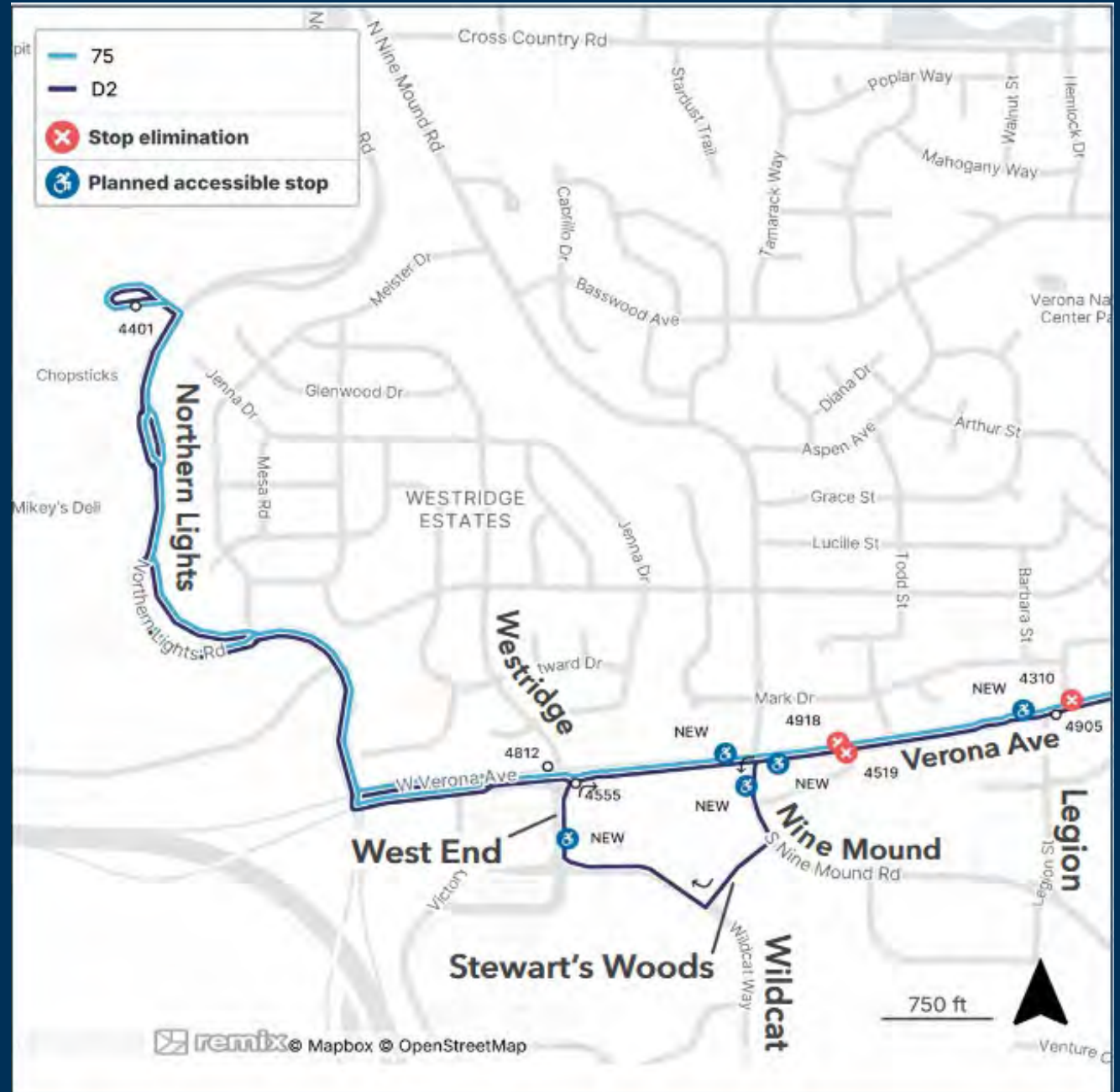
New stop will be on Whitney Way.



Additional Stop Changes

Verona

- Stops to close at Verona Ave. and Todd St.
- New stops at Verona Ave. and Nine Mound
- Legion St. stop moved to where a new traffic signal is planned



Additional Stop Changes

To close to improve on-time performance and support N/S BRT.

South Transfer Point Closure (December 2025)

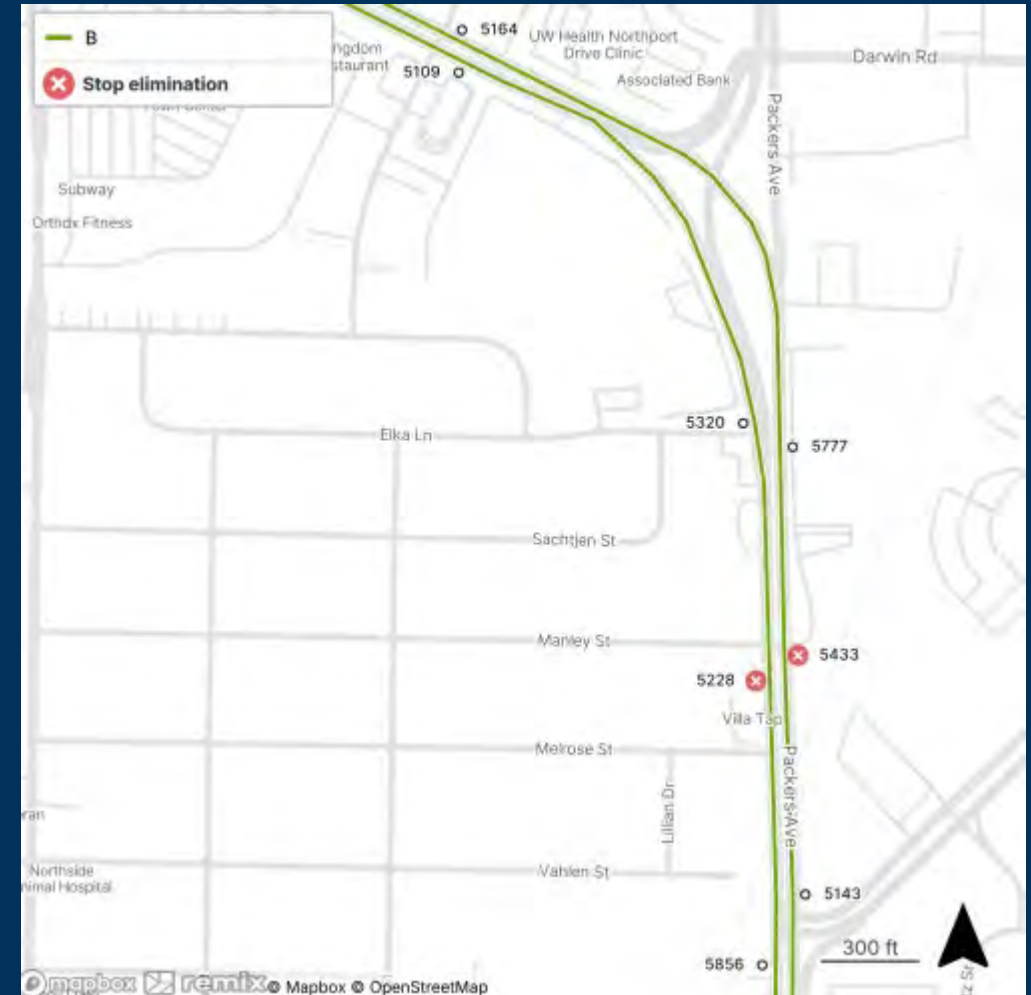
- New Route B stops added on Park and Hughes.
- New Route G stops added on Badger at Park.
- Stops on Badger at Fish Hatchery, Fiedler removed.
- Stops on Park at Buick removed.



Additional Stop Changes

Packers / Manley

- This was in your packet materials but not included in your presentation slides.
- However, due to updates with North/South BRT station site planning, **we're no longer proposing this closure.**



Additional Stop Changes

To close to improve on-time performance and support N/S BRT.

South Transfer Point Closure (December 2025):

ID	Stop Name	Direction	Planned Status	Google Walk to Closet Stop	Boardings
0816	Fish Hatchery at Badger		Proposed for Deletion	670 feet to next stop	28
0121	Badger/Fiedler		Proposed for Deletion	610 feet to next stop	21
STP	South Transfer Point		Proposed for Deletion	360 feet to next stop	918
0906	Park/Buick	Southbound	Proposed for Deletion	560 feet to next stop	11
0475	Park/Buick	Northbound	Proposed for Deletion	560 feet to next stop	122

Equity Concerns

D2 Extension

- The Point Apartments (10-minute walk)
- Small pocket of paratransit eligibility reduction (no current riders)

South Transfer Point closure

- Some riders will need to walk further
 - Offset by new stops on Hughes with new shelter and better access to Village on Park St. and nearby apartments

Thank You!

Metro Transit

mymetrobus@cityofmadison.com
608.266.4466 (customer service)

