


PRIVATE STORM SEWER EASEMENT

PART OF THE NORTHWEST 1/4 OF THE NORTHWEST 1/4 OF SECTION 07, TOWNSHIP 07 NORTH, RANGE 10 EAST, CITY OF MADISON, DANE COUNTY, WISCONSIN.

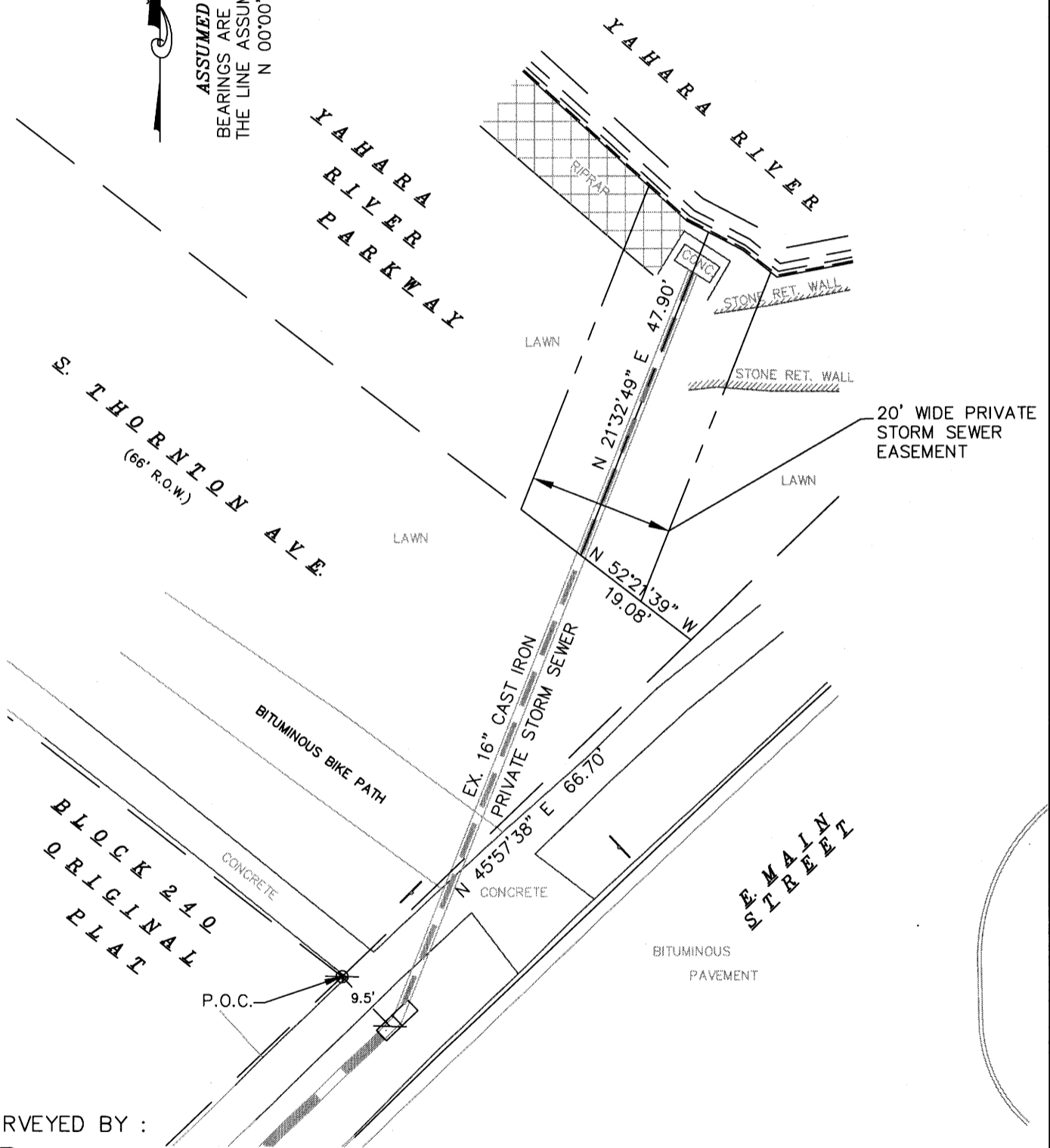


 ASSUMED NORTH

 BEARINGS ARE BASED UPON

 THE LINE ASSUMED TO BEAR

 N 00°00'00" E



SURVEYED BY :

Burse

surveying & engineering INC

1400 E. Washington Ave, Suite 158
 Madison, WI 53703 608.250.9263
 Fax: 608.250.9266
 email: mburse@bse-inc.net
 www.bursesurveyengr.com

SURVEYED FOR :

YAHARA SQUARE ASSOCIATES, LLP
 401 N. CARROLL ST.
 MADISON, WI 53703

Date: January 13, 2011
 Plot View: Ease Exhibit

\\PROJECTS\\BSE296\\Engineering\\BSE296BASE.DWG

SHEET 1 OF 1