

**APPLICATION FOR  
URBAN DESIGN COMMISSION  
REVIEW AND APPROVAL**

**AGENDA ITEM #** \_\_\_\_\_

**Project #** \_\_\_\_\_

DATE SUBMITTED: <u>November 24, 2008</u>	<b>Action Requested</b>
UDC MEETING DATE: <u>December 3, 2008</u>	<input type="checkbox"/> Informational Presentation
	<input type="checkbox"/> Initial Approval and/or Recommendation
	<input checked="" type="checkbox"/> Final Approval and/or Recommendation

PROJECT ADDRESS: 1022 West Johnson Street

ALDERMANIC DISTRICT: Eli B. Judge - District #8

OWNER/DEVELOPER (Partners and/or Principals)

ARCHITECT/DESIGNER/OR AGENT:

Ten Twenty Two, LLC

Knothe & Bruce Architects, LLC

P.O.Box 7726

7601 University Avenue, Suite 201

Madison, WI 53707

Middleton, Wisconsin 53562

CONTACT PERSON: J. Randy Bruce/Knothe & Bruce Architects, LLC

Address: 7601 University Avenue, Suite 201

Middleton, Wisconsin 53562

Phone: 608-836-3690

Fax: 608-836-6934

E-mail address: [rbruce@knothebruce.com](mailto:rbruce@knothebruce.com)

**TYPE OF PROJECT:**

(See Section A For:)

- Planned Unit Development (PUD)
  - General Development Plan (GDP)
  - Specific Implementation Plan (SIP)
- Planned Community Development (PCD)
  - General Development Plan (GDP)
  - Specific Implementation Plan (SIP)
- Planned Residential Development (PRD)
- New Construction or Exterior Remodeling in an Urban Design District\* (A public hearing is required as well as a fee)
- School, Public Building or Space (Fee may be required)
- New Construction or Addition to or Remodeling of a Retail, Hotel, or Motel Building Exceeding 50,000 Sq.Ft.
- Planned Commercial Site

(See Section B for:)

- New Construction or Exterior Remodeling in C4 District (Fee required)

(See Section C for:)

- R.P.S.M. Parking Variance (Fee required)

(See Section D for:)

- Comprehensive Design Review\* (Fee required)
- Street Graphics Variance\* (Fee Required)
- Other \_\_\_\_\_

\*Public Hearing Required (Submission Deadline 3 Weeks in Advance of Meeting Date)

November 24, 2008

Al Martin  
Urban Design Committee  
Planning and Development  
City of Madison

RE: 1022 West Johnson Street (Grand Central)

Dear Mr. Martin:

The attached application and attachments are submitted for final review and approval by the Urban Design Commission. The following revisions and additions to the exterior of the Grand Central project have occurred since the final UDC approval was granted:

- Exterior lighting has been selected and is illustrated on the elevations and plans.
- A wall-mounted, 4-sided decorative clock has been added to the southwest corner of the building.
- Limited areas of precast concrete finish have been changed to EIFS. These areas include the balcony corners on floors 1 through 3 and vertical separation elements on floors 5 through 12 near the southwest corner. The EIFS color and finish will match the finish of the precast.
- The coursing of the cast stone at floors 1 through 4 at the southwest corner has been revised.
- Mechanical penetrations have been sized and located on the north and east elevations of floor 1. Decorative window elements were removed to accommodate the mechanical equipment.

All of the above items are illustrated on the attached plans and elevations. Thank you for your time reviewing these changes. We look forward to addressing any questions you may have.

Very truly yours,

J. Randy Bruce, AIA  
Managing Member

Attachments:

Exterior Lighting:

- C-1.5 - Site Lighting and Signage Plans
- A-2.1-A-2.5 - Building Elevations  
Individual light fixture cut sheets.

Other Revisions:

- A-1.2-A-2.5 - Building Elevations

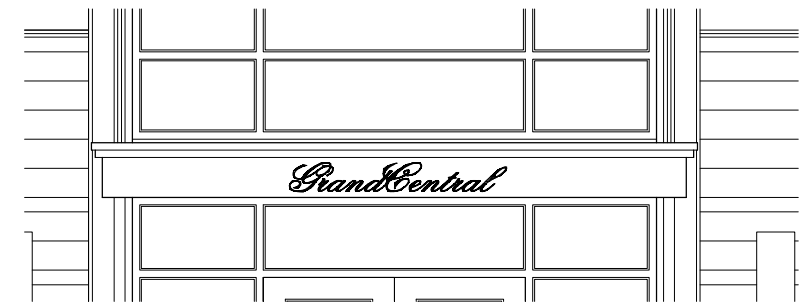
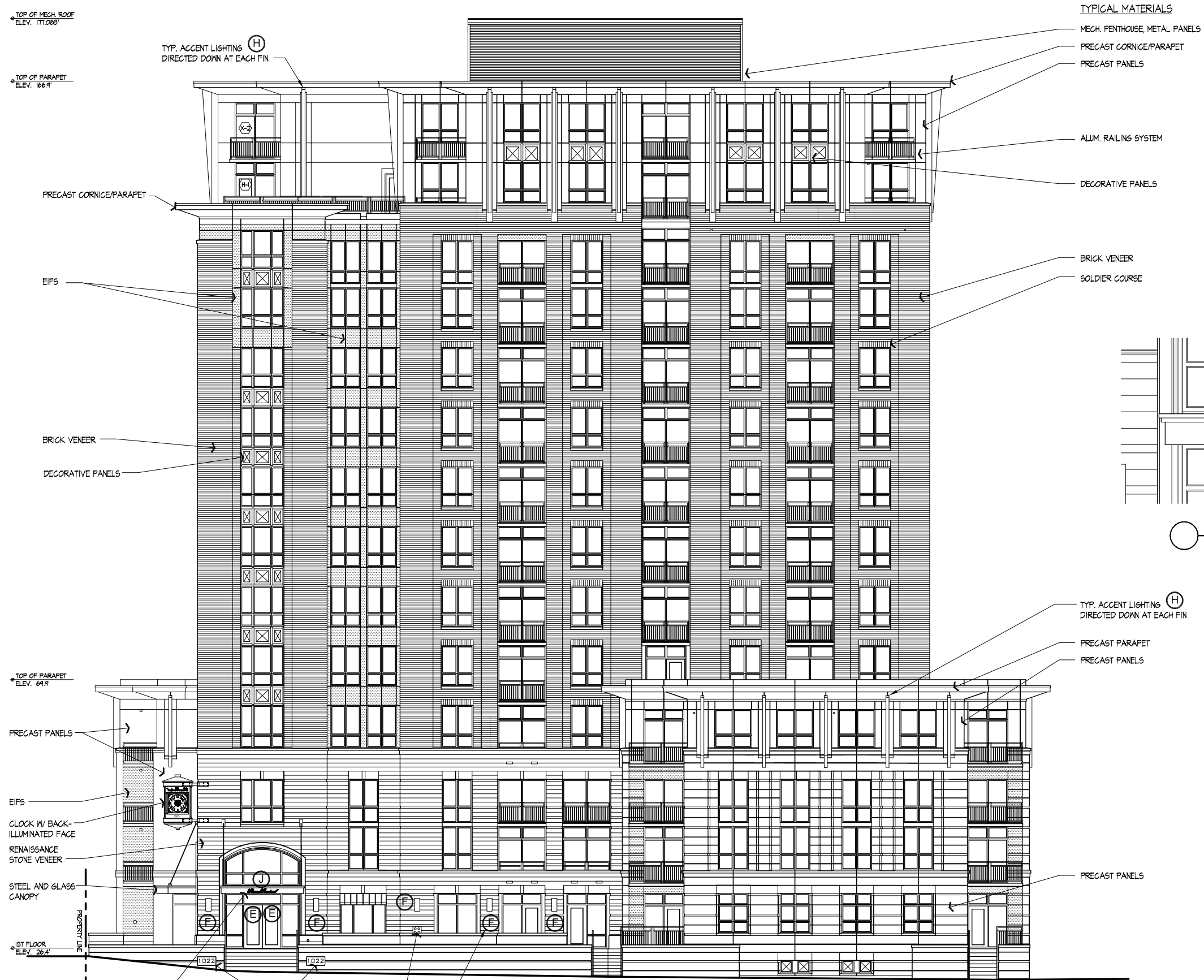


# Site Locator Map

1022 West Johnson Street  
Madison, WI

Consultant

Notes  
1. ELEVATIONS SHOWN ARE IN RELATION TO CITY DATUM WHERE CITY DATUM ZERO (0.00) FEET SHALL BE ESTABLISHED AS (845.6) FEET ABOVE SEE LEVEL.



Enlarged Elevation of Canopy Signage  
1/2" = 1'-0"

South Elevation  
1/8" = 1'-0"

Revisions  
Issued for Approval - November 14, 2008

Project Title  
Grand Central

1022 West Johnson  
Drawing Title  
South Elevation -  
Lighting and Signage  
Project No. Drawing No.

0622

A-2.1

This document contains confidential or proprietary information of Knothe & Bruce Architects. It is to be reproduced, distributed, used, or disclosed, either in whole or in part, except as specifically authorized by Knothe & Bruce Architects. Knothe & Bruce Architects is a Limited Liability Company of Wisconsin.

Notes  
1. ELEVATIONS SHOWN ARE IN RELATION TO CITY DATUM WHERE CITY DATUM ZERO (0.00) FEET SHALL BE ESTABLISHED AS (845.6) FEET ABOVE SEE LEVEL.

Revisions  
Issued for Approval - November 14, 2008

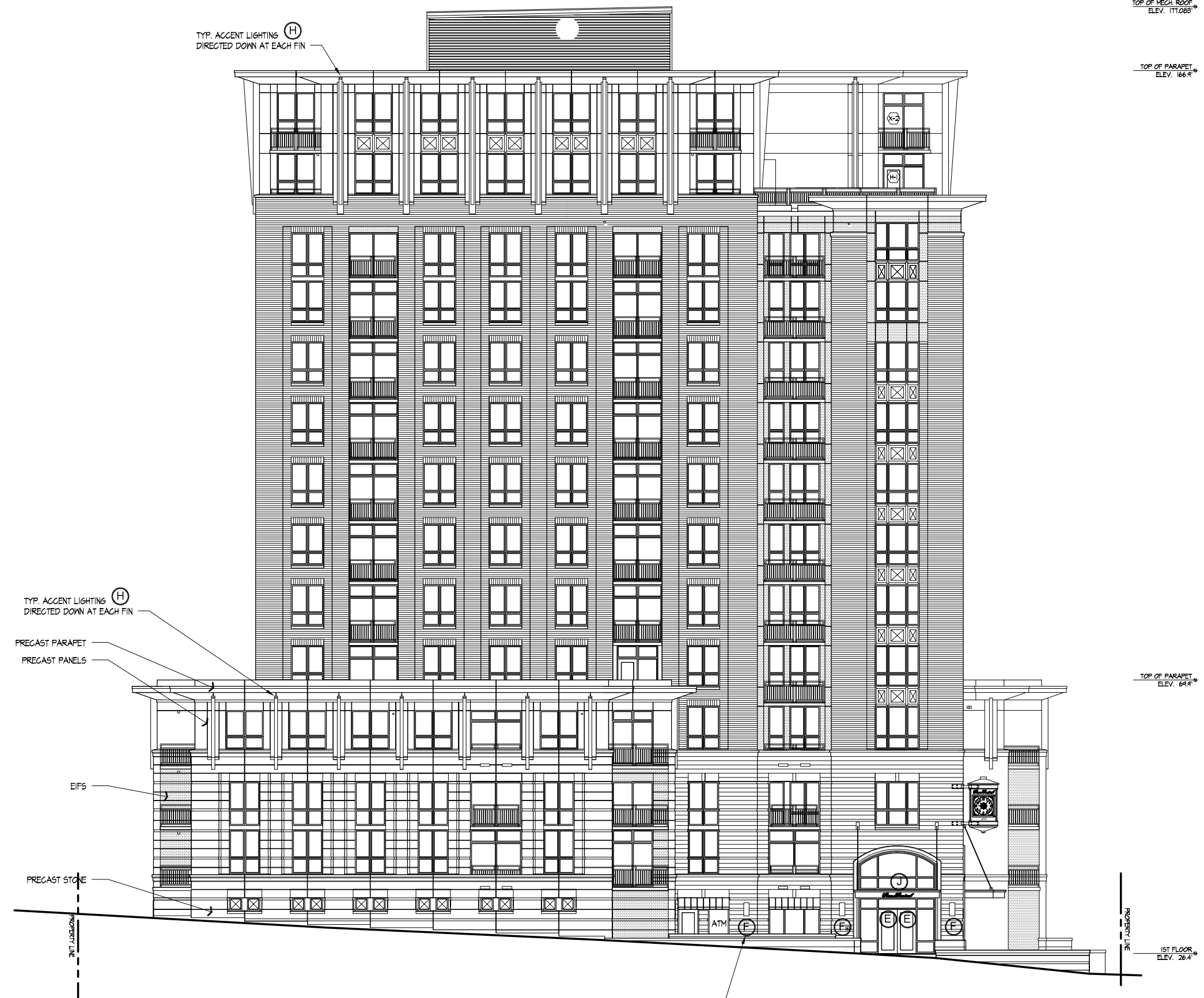
Project Title  
Grand Central

1022 West Johnson  
Drawing Title  
West Elevation -  
Lighting and Signage

Project No. Drawing No.

0622 A-2.2

This document contains confidential or proprietary information of Knothe & Bruce Architects. Neither the document nor the information herein is to be reproduced, distributed, used, or disclosed, either in whole or in part, except as specifically authorized by Knothe & Bruce Architects. Knothe & Bruce Architects is a Limited Liability Company of Wisconsin.



West Elevation  
1/8" = 1'-0"

Notes  
1. ELEVATIONS SHOWN ARE IN RELATION TO CITY DATUM WHERE CITY DATUM ZERO (0.00) FEET SHALL BE ESTABLISHED AS (845.6) FEET ABOVE SEE LEVEL.

Revisions  
Issued for Approval - November 14, 2008

Project Title  
Grand Central

1022 West Johnson  
Drawing Title  
North Elevation -  
Lighting and Signage

Project No. Drawing No.

0622 A-2.3

This document contains confidential or proprietary information of Knothe & Bruce Architects. Reproduction of this document in whole or in part, except as specifically authorized by Knothe & Bruce Architects, Knothe & Bruce Architects is a Limited Liability Company of Wisconsin.

TOP OF MECH. ROOF  
ELEV. 111.083'

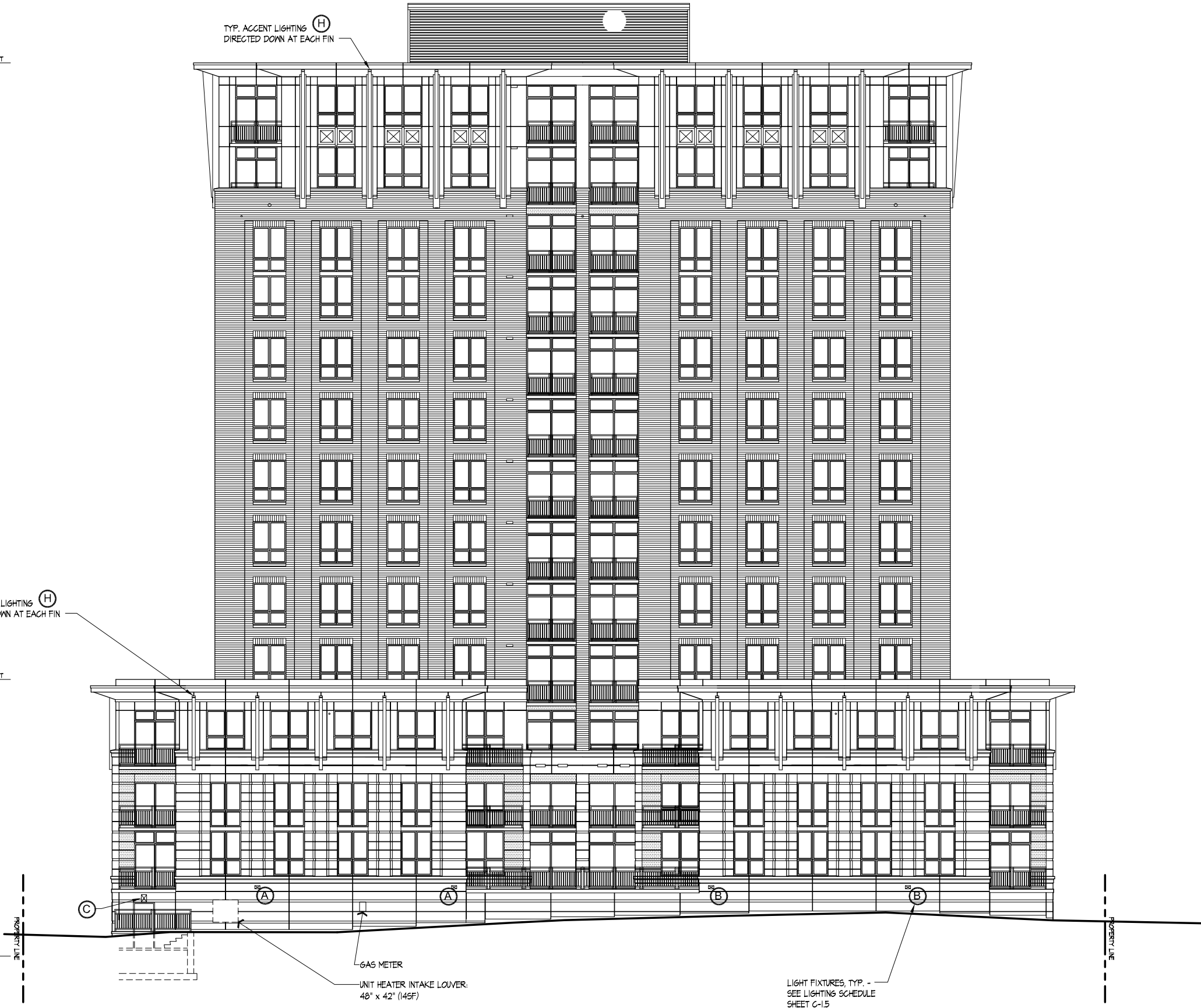
TOP OF PARAPET  
ELEV. 106.9'

TYP. ACCENT LIGHTING  
DIRECTED DOWN AT EACH FIN

TYP. ACCENT LIGHTING  
DIRECTED DOWN AT EACH FIN

TOP OF PARAPET  
ELEV. 84.9'

1ST FLOOR  
ELEV. 26.4'



North Elevation  
1/8" = 1'-0"

Notes  
1. ELEVATIONS SHOWN ARE IN RELATION TO CITY DATUM WHERE CITY DATUM ZERO (0.00) FEET SHALL BE ESTABLISHED AS (8456) FEET ABOVE SEE LEVEL.

Revisions  
Issued for Approval - November 14, 2008

Project Title  
Grand Central

1022 West Johnson  
Drawing Title  
East Elevation - Lighting and Signage  
Project No. Drawing No.

0622 A-2.4

This document contains confidential or proprietary information of Knothe & Bruce Architects. Neither the document nor the information herein is to be reproduced, distributed, used, or disclosed, either in whole or in part, except as specifically authorized by Knothe & Bruce Architects. Knothe & Bruce Architects is a Limited Liability Company of Wisconsin.

TOP OF MECH. ROOF  
ELEV. 177.083'

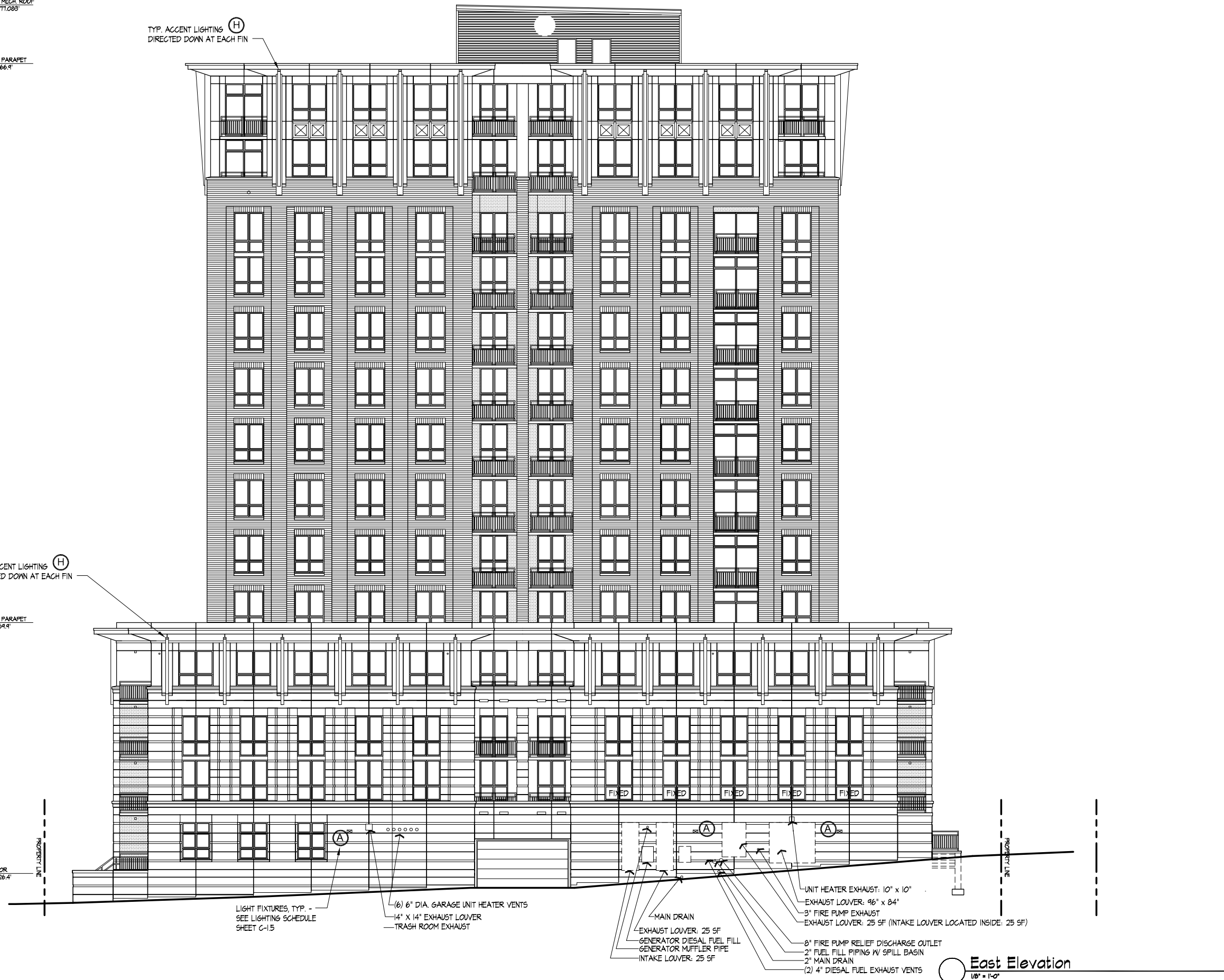
TOP OF PARAPET  
ELEV. 166.9'

TYP. ACCENT LIGHTING  
DIRECTED DOWN AT EACH FIN

TYP. ACCENT LIGHTING  
DIRECTED DOWN AT EACH FIN

TOP OF PARAPET  
ELEV. 64.4'

1ST FLOOR  
ELEV. 26.4'



LIGHT FIXTURES, TYP. -  
SEE LIGHTING SCHEDULE  
SHEET C-15

(6) 6" DIA. GARAGE UNIT HEATER VENTS  
14" X 14" EXHAUST LOUVER  
TRASH ROOM EXHAUST

MAIN DRAIN  
EXHAUST LOUVER: 25 SF  
GENERATOR DIESEL FUEL FILL  
GENERATOR MUFFLER PIPE  
INTAKE LOUVER: 25 SF

UNIT HEATER EXHAUST: 10" x 10"  
EXHAUST LOUVER: 96" x 84"  
3" FIRE PUMP EXHAUST  
EXHAUST LOUVER: 25 SF (INTAKE LOUVER LOCATED INSIDE: 25 SF)

8" FIRE PUMP RELIEF DISCHARGE OUTLET  
2" FUEL FILL PIPING W/ SPILL BASIN  
2" MAIN DRAIN  
(2) 4" DIESEL FUEL EXHAUST VENTS

East Elevation  
1/8" = 1'-0"

Consultant

Notes  
1. ELEVATIONS SHOWN ARE IN RELATION TO CITY DATUM  
WHERE CITY DATUM ZERO (0.00) FEET SHALL BE  
ESTABLISHED AS (845.6) FEET ABOVE SEE LEVEL.

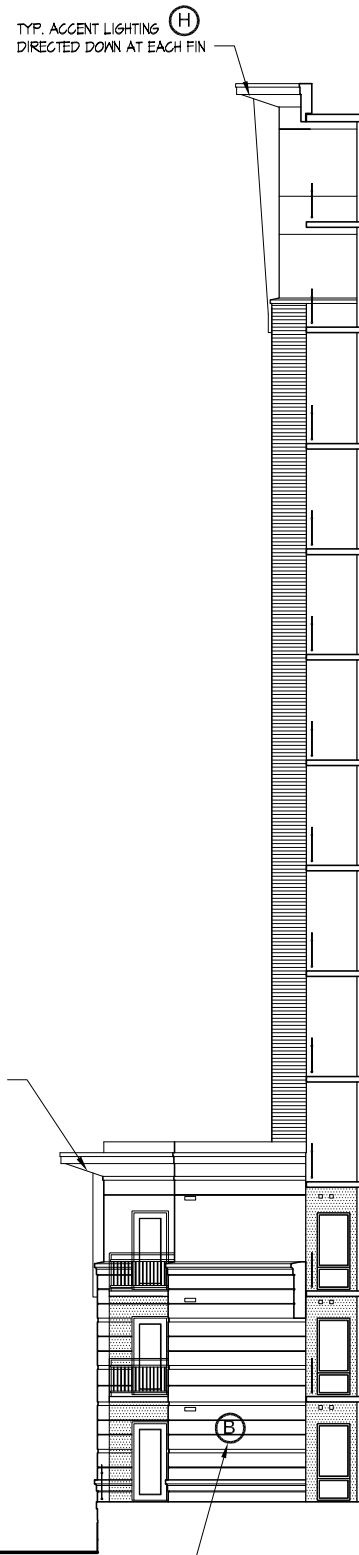
Revisions  
Issued for Approval - November 14, 2008

Project Title  
Grand Central

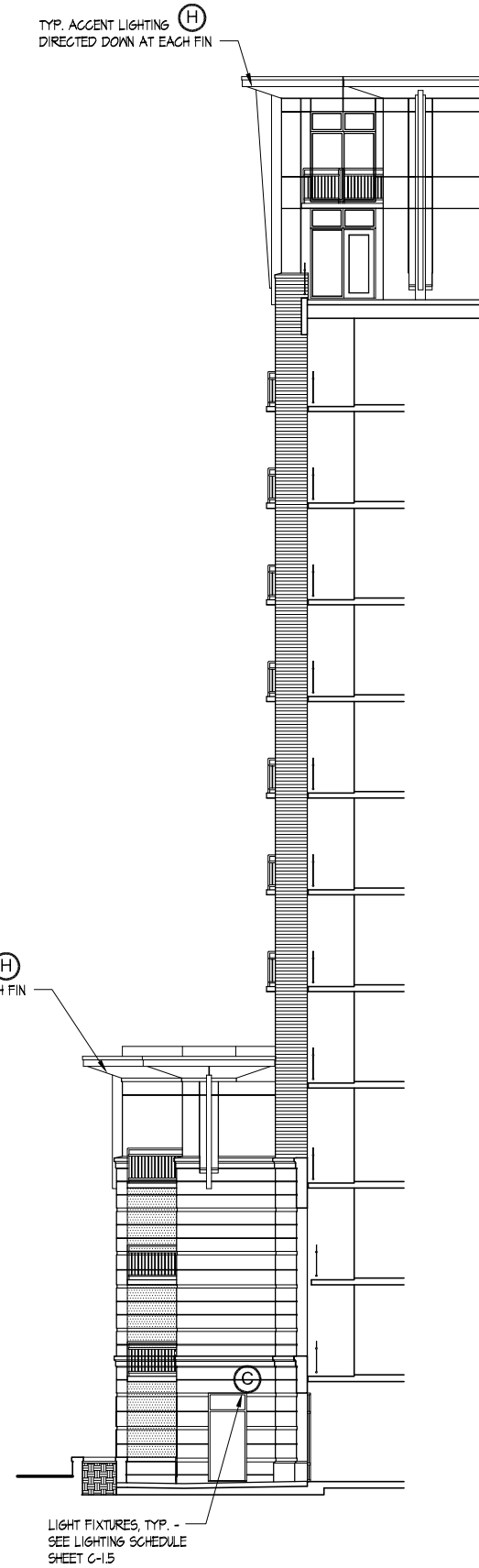
1022 West Johnson  
Drawing Title  
Hidden Elevations -  
Lighting and Signage  
Project No. Drawing No.

0622 A-2.5

This document contains confidential or proprietary information of Knothe & Bruce Architects. Reproduction of this document or the information herein is not to be reproduced, distributed, used, or disclosed, either in whole or in part, except as specifically authorized by Knothe & Bruce Architects. Knothe & Bruce Architects is a Limited Liability Company of Wisconsin.



**B** Hidden Elevation  
1/8" = 1'-0"



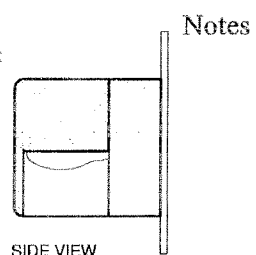
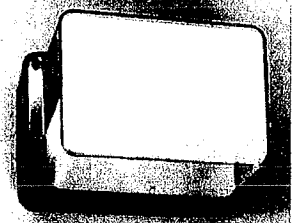
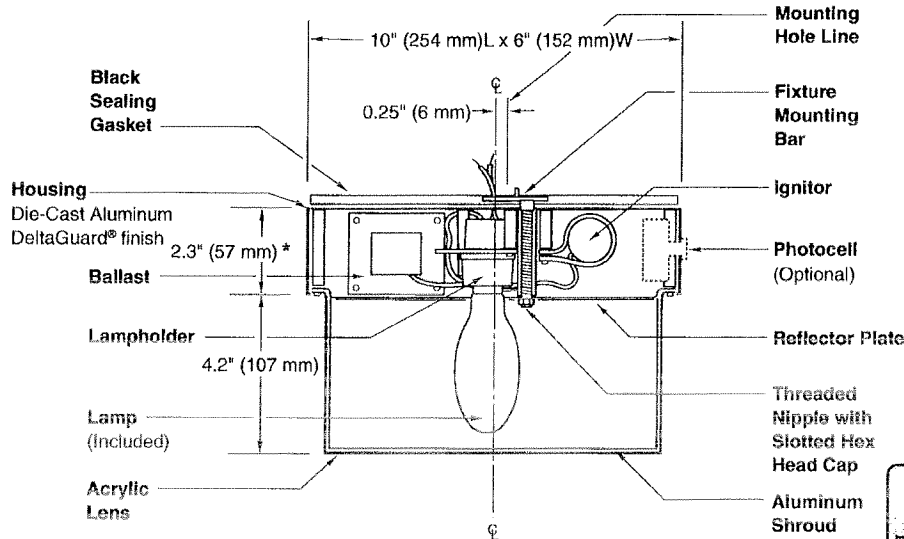
**A** Hidden Elevation  
1/8" = 1'-0"



**RECTANGULAR HID WALL MOUNT  
DEEP SHIELDED**

**E8-H  
SERIES**

OA  
**(A) + (B)**



**NOTE:**  
\* For all M, T and 6 voltages, this dimension is 3.0" (76 mm)

SPEC #	MOUNTING POSITION	WATTAGE	CATALOG #
<b>METAL HALIDE</b>			
SPEC #	Wall Downlight	50W MH	E8405-(a)(b)
SPEC #	Wall Downlight	70W MH	E8407-(a)(b)
<b>HIGH PRESSURE SODIUM</b>			
SPEC #	Any	35W HPS	E8503-(a)(b)
SPEC #	Any	50W HPS	E8505-(a)(b)
SPEC #	Wall Downlight	70W HPS	E8507-(a)(b)
SPEC #	Wall Downlight	100W HPS	E8510-(a)(b)

Specify (a) Voltage & (b) Options.

(a) VOLTAGE SUFFIX KEY	
<b>M</b>	120/208/240/277V (Standard: 50 – 70W MH) (50 – 100W HPS)
<b>T</b>	120/277/347V (Canada Only) (70W MH; 70 – 100W HPS)
<b>1</b>	120V (Standard: 35 – 100W HPS)
<b>2</b>	277V (35 – 50W HPS)
<b>3</b>	208V
<b>4</b>	240V
<b>6</b>	347V (Canada Only) (50W HPS)

For voltage availability outside the US and Canada, see Bulletin TD-9 or contact your Ruud Lighting authorized International Distributor.

(b) OPTIONS (factory-installed)	
<b>BS</b>	Bronze Color Shroud
<b>GS</b>	Gold Color Shroud (n/a on 100W HPS)
<b>H</b>	High Power Factor Ballast
<b>J</b>	Tamperproof Lens Fasteners
<b>-(a)P</b>	Photocell
<b>V</b>	Polycarbonate Lens

Specify (a) Single Voltage — See Voltage Suffix Key

**GENERAL DESCRIPTION**

Aluminum die-cast ballast housing features a thermal air isolation chamber separating the ballast core and coil from the other electrical components. Supplied with a neoprene sealing gasket for complete weatherproofing at the mounting surface. A silicone rubber seal is furnished between housing and lens to ensure a water- and insect-tight seal. Steel fixture mounting bar and threaded nipple provided for direct mounting to recessed junction box. Clear acrylic lens is fastened to housing with phillips-head captive stainless-steel screws. Combination of internal polished aluminum shroud (inside painted white and outside painted silver on 100W HPS) and diffuse reflector plate provides front brightness shielding without sacrificing wide light distribution.

**ELECTRICAL**

Fixture includes clear, medium-base lamp and porcelain enclosed, 4kv-rated screw-shell-type lampholder with spring-loaded center contact. Lamp ignitor included where required. All ballast assemblies are normal power factor and use the following circuit types:

- Reactor* (120V only)  
35 – 100W HPS
- Reactor/Transformer* (277V)  
35 – 50W HPS
- HX — High Reactance*  
50 – 70W MH; 50 – 100W HPS

**FINISH**

Exclusive Colorfast DeltaGuard® finish features an E-coat epoxy primer with medium bronze acrylic powder topcoat, providing excellent resistance to corrosion, ultraviolet degradation and abrasion. The finish is covered by our seven-year limited warranty.

**ACCESSORIES**

<b>ESB-7</b>	Surface Mounting Box
<b>PAS-7</b>	Pole Mounting Bracket
<b>TPS-1</b>	Tamperproof Screwdriver

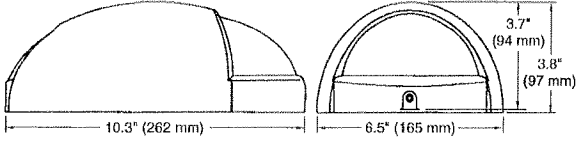
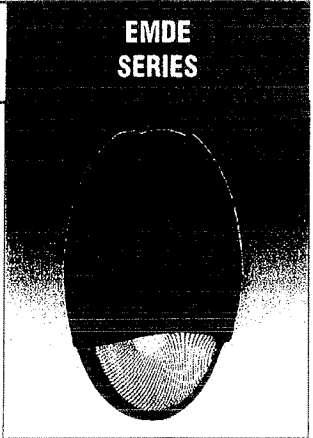
**LABELS**

ANSI lamp wattage label supplied, visible during relamping. UL Listed in the US and Canada for wet locations and enclosure classified IP54 per IEC 529 and IEC 598.



ER1

**EMERGENCY LIGHT**



Notes

**SPEC # CATALOG # DESCRIPTION**  
EMDE SERIES

SPEC #	EMDE(a)	Emergency Light
--------	---------	-----------------

(a) Specify finish color WH = White, BZ = Bronze  
NOTE: Exit and emergency products not available in Canada.

**GENERAL DESCRIPTION**

Bronze or white housing is die-cast aluminum with an acrylic, injection-molded prismatic lens. Silicone gasket between housing halves assures a watertight seal. Battery test switch and charge monitor LED indicator are located on the bottom of the fixture housing. For wall mount only. Mounts directly over recessed junction box. Also provided with a 1/2" conduit entry for surface wiring. Housing includes knockout pattern for direct mount to all standard J-boxes. Factory-installed sealing back gasket.

**ELECTRICAL**

Two – 6-volt, 6-watt 2-pin G4 Xenon lamps. 120/277 VAC dual-voltage, solid-state electronic charger. Unit consumes 3.0 watts. Maintenance-free, long-life, nickel-cadmium 6-volt battery operates both lamps for 90 minutes (minimum) after power outage. Battery has 10-year estimated service life when operated at an ambient temperature of 20°F (-7°C) to 85°F (30°C).  
An automatic low-voltage disconnect protects the battery from deep discharge. Labor saving AC lockout prevents battery discharge when fixture is installed on a non-energized AC circuit. Automatic brownout protection turns the lights on when AC voltage drops to 80% of nominal.

**LABELS**

Listed for wet locations 32°F – 122°F (0°C – 50°C) and to current UL924 Emergency and Power Equipment Safety Standard. Complies with NFPA 101 Life Safety Code, as well as NEC and OSHA illumination standards.





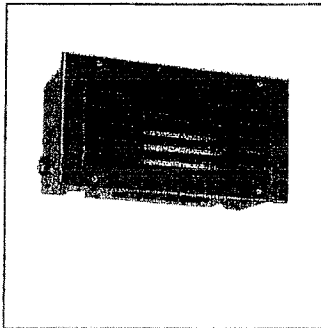
DATE: \_\_\_\_\_ TYPE: \_\_\_\_\_

FIRM NAME: \_\_\_\_\_

PROJECT: \_\_\_\_\_



For conversion to millimeters,  
multiply inches by 25.4  
Not to Scale



## Recessed Step Light **37CFT26EB**

One 26W Triple Tube Compact  
Fluorescent Lamp  
Non-IC Rated  
120V, 208V, 240V, or 277V

### APPLICATIONS:

The 37CFT26EB compact fluorescent step light is a heavy-duty, energy efficient step light for a wide variety of interior and exterior applications. Fully gasketed, the 37CFT26EB luminaire is approved for wet or concrete pour applications.

### HOUSING:

Diecast aluminum housing with white baked enamel finish.

### FACEPLATE:

Die cast aluminum faceplates are available with a choice of louvered with a prismatic glass lens (LF) or open with a prismatic glass lens (OF). Available in black (BL), bronze (BZ), or Prescolite's exclusive Zet (Z, metallic silver) finish.

### BALLAST:

One (1) multi-volt (120V thru 277V) compact fluorescent class "P" electronic ballast suitable for operating 26W triple tube lamps. Ballast is accessible through the housing for servicing. See reverse side for additional ballast information.

### LAMP:

One (1) 26W (GX24Q-3 base) 4-pin triple tube compact fluorescent lamp. Lamp furnished by others.

### SOCKET:

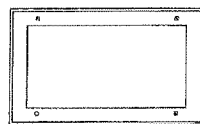
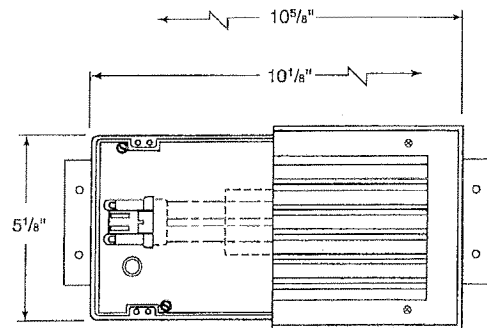
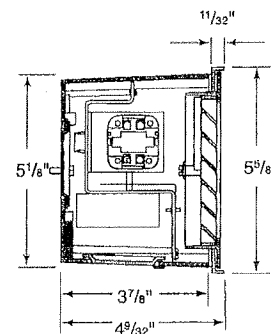
One (1) injection molded socket (GX24Q-3 base) suitable for 26W triple tube lamps.

### INSTALLATION:

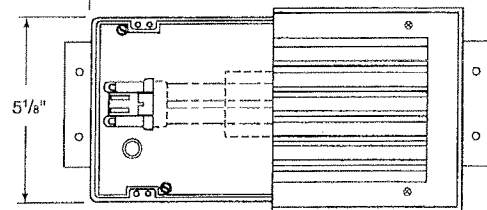
Galvanized steel mounting brackets are included.

### LABELS/WEIGHT:

U.L., CSA approved for wet locations and concrete pour. Note: Salt air application may cause cast aluminum to oxidize over time. Contact Technical Support for questions. Approved for exterior/interior installations. Non-IC rated. Consult factory for N.Y. City approval.



Open Faceplate (OF)



Louvered Faceplate (LF)

CATALOG NUMBER:

EXAMPLE: 37CFT26EB LFZ TPS

HOUSING	HOUSING OPTION	FACEPLATE	FINISH	ACCESSORIES
<input type="checkbox"/> <b>37CFT26EB</b> 26W triple tube CFL, Non-IC, recessed step light	<input type="checkbox"/> <b>TW</b> Through wiring capability	<input type="checkbox"/> <b>LF</b> Diecast aluminum louvered faceplate with prismatic lens <input type="checkbox"/> <b>OF</b> Diecast aluminum open faceplate with prismatic lens	<input type="checkbox"/> <b>BL</b> Black <input type="checkbox"/> <b>BZ</b> Bronze <input type="checkbox"/> <b>Z</b> Zet, metallic silver	<input type="checkbox"/> <b>TPS</b> Tamper proof screws



In a continuing effort to offer the best product possible we reserve the right to change, without notice, specifications or materials that in our opinion will not alter the function of the product.  
Web: [www.prescolite.com](http://www.prescolite.com) • Tech Support: (888) 777-4832

L5-005



An Acuity Brands Company

# 4620 KNUCKLE MOUNT

## ACCENT LIGHT

### DESCRIPTION:

The 4620 knuckle mount accent light is uniquely designed with rugged sealed die-cast aluminum construction and an offset swivel mount for balance. This is a compact, versatile fixture which accepts low voltage MR-16 lamps, PAR20 incandescent, T4MH and PAR20 MH lamps, for architectural and landscape applications to thirty feet. A wide range of photometric performance is available with internal and/or external glare control.

### SPECIFICATIONS:

**MATERIAL:** Fixture and Knuckle: Die-cast copper-free aluminum A360. All materials are chem-filmed or anodized prior to painting.

**LAMP: Low Voltage:** MR16, 50W Max. with integral transformer  
75W with external transformer.

**Quartz:** PAR20, 50W Max.

**MH:** PAR20 or T4, 35W Max.

**SOCKET: Low Voltage:** GX5. 3 bi-pin

**Quartz & PAR20 MH:** Pulse rated medium base or E27 base

**T4 MH:** G8.5

**VOLTAGE:** See Ordering Guide

**DISTRIBUTION:** Beam spread by lamp type on PAR and MR lamps; SP or FL reflector on T4 lamp.

**LENS:** Crowned tempered glass.

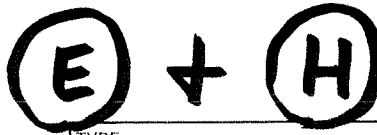
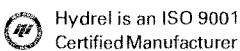
**MOUNTING:** 1/2" NPT or PG16 adjustable knuckle.

**FINISH:** See ordering guide

**FASTENERS:** Stainless steel.

**LISTING:** C.E., U.L., C.U.L.

NOTE: HYDREL RESERVES THE RIGHT TO MODIFY SPECIFICATION WITHOUT NOTICE. Any dimension on this sheet is to be assumed as a reference dimension: "Used for information purposes only. It does not govern manufacturing or inspection requirements." (ANSI Y14.5-1973)

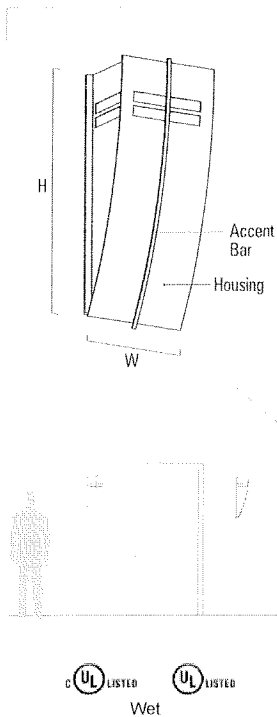
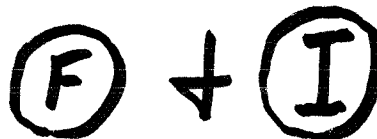


IP66

TYPE					JOB NAME				
PART NUMBER									
Model		Lamp Type		Voltage		Distribution		Mounting	
Mounting Options		Acces.		Options		Lamp		Listing	
<p><b>KM Knuckle Mount</b></p>									
APPROVALS									

# Cypress-Cascade | OW1222

Catalog Number: OW1222



### Dimensions

Key	English	Metric
D (depth)	7-3/4"	197mm
H (height)	25"	635mm
MC (mounting center)	12-3/8"	314mm
W (width)	10-1/2"	267mm

### Options

- Fusing**  
 FUSE Fusing
- Emergency**  
 REM Remote Emergency Battery Pack
- XPS Option**  
 XPS Express 10 Day Shipment

### Lamping Choices

Lamping	Voltage	Max Amps
<input type="radio"/> 1H70(120/277V) (1) 70 watt, Metal Halide, PAR30, MED Ballast(s): V, Integral, H.P.F., , HID ballast.	120/277V	.81/35
<input type="radio"/> 1H70(347V) (1) 70 watt, Metal Halide, PAR30, Med Ballast(s): V, Integral, H.P.F., , HID ballast.	347V	.28
<input type="radio"/> 1PH70(120/277V) (1) 70 watt, Pulse Start, ED17, MED Ballast(s): V, Integral, H.P.F., , HID ballast.	120/277V	.85/37
<input type="radio"/> 1PH70(347V) (1) 70 watt, Pulse Start, ED17, MED Ballast(s): V, Integral, H.P.F., , HID ballast.	347V	.29
<input type="radio"/> 1T75(120V) (1) 75 watt, Tungsten-Halogen, PAR30, Med	120V	.63
<input type="radio"/> 1N150(120V) (1) 150 watt, Incandescent, A21, Med	120V	1.25
<input type="radio"/> 2TF32(120/277V) (2) 32 watt, Triple Twin Fluorescent, Triple, GX24q-3 Ballast(s): Integral, electronic, H.P.F. Fluorescent.	120/277V	.66/28
<input type="radio"/> 2TF32(347V) (2) 32 watt, Triple Twin Fluorescent, TRIPLE, GX24q-3 Ballast(s): Integral, electronic, H.P.F. Fluorescent.	347V	.22

### Mounting:

Mounts over an electrical box (by others) with hardware provided. See mounting center dimensions (M.C.) on the above drawing to locate the electrical box. Requires structural blocking. The distance between the mounting holes is 7 in. x 16 in.

### Mounting note:

May be mounted in up or down position.

### Mounting note(2):

Must be mounted a minimum of 3 feet above grade.

### Finishes

#### Housing Finish

- |  |  |   |  |
|--|--|---|--|
| <input type="radio"/> PTCTBS Unspecified           | <input type="radio"/> DR8012 Deep Red (RAL 8012)   | <input type="radio"/> PB1035 Pearl Beige (RAL 1035)   | <input type="radio"/> VER Verdegris Powder |
| <input type="radio"/> AG7038 Agate Grey (RAL 7038) | <input type="radio"/> GLIM Glimmer                 | <input type="radio"/> PG7032 Pebble Grey (RAL 7032)   | <input type="radio"/> WHT White            |
| <input type="radio"/> BBH Black-Brass Hammertone   | <input type="radio"/> GN6004 Green (RAL 6004)      | <input type="radio"/> RBH Red-Bronze Hammertone       | <input type="radio"/> PTD Painted          |
| <input type="radio"/> BLH Black-Silver Hammertone  | <input type="radio"/> GW9002 Grey White (RAL 9002) | <input type="radio"/> RCOP Rich Copper                |  |
| <input type="radio"/> BLK Black                    | <input type="radio"/> GY7005 Mouse Grey (RAL 7005) | <input type="radio"/> RG6013 Reed Green (RAL 6013)    |  |
| <input type="radio"/> BMAT Bronze Matte            | <input type="radio"/> IBRS Imperial Brass          | <input type="radio"/> SLH Silver Hammertone           |  |
| <input type="radio"/> BRNZ Bronze Power Coat (V6)  | <input type="radio"/> JB9005 Jet Black (RAL 9005)  | <input type="radio"/> SR3001 Signal Red (RAL 3001)    |  |
| <input type="radio"/> COPR Copper                  | <input type="radio"/> MG7003 Moss Grey (RAL 7003)  | <input type="radio"/> SUNG Sungold                    |  |
| <input type="radio"/> COPT Coppertone              | <input type="radio"/> MT6033 Mint (RAL 6033)       | <input type="radio"/> TG7042 Traffic Grey (RAL 7042)  |  |
| <input type="radio"/> CW9001 Cream (RAL 9001)      | <input type="radio"/> NB5022 Night Blue (RAL 5022) | <input type="radio"/> TW9016 Traffic White (RAL 9016) |  |

#### Accent Bar Finish

- |  |  |   |  |
|--|--|---|--|
| <input type="radio"/> PTCTBS Unspecified           | <input type="radio"/> DR8012 Deep Red (RAL 8012)   | <input type="radio"/> PB1035 Pearl Beige (RAL 1035)   | <input type="radio"/> VER Verdegris Powder         |
| <input type="radio"/> AG7038 Agate Grey (RAL 7038) | <input type="radio"/> GLIM Glimmer                 | <input type="radio"/> PG7032 Pebble Grey (RAL 7032)   | <input type="radio"/> WHT White                    |
| <input type="radio"/> BBH Black-Brass Hammertone   | <input type="radio"/> GN6004 Green (RAL 6004)      | <input type="radio"/> RBH Red-Bronze Hammertone       | <input type="radio"/> BSS Brushed Stainless Steel  |
| <input type="radio"/> BLH Black-Silver Hammertone  | <input type="radio"/> GW9002 Grey White (RAL 9002) | <input type="radio"/> RCOP Rich Copper                | <input type="radio"/> PSS Polished Stainless Steel |
| <input type="radio"/> BLK Black                    | <input type="radio"/> GY7005 Mouse Grey (RAL 7005) | <input type="radio"/> RG6013 Reed Green (RAL 6013)    | <input type="radio"/> PTD Painted                  |
| <input type="radio"/> BMAT Bronze Matte            | <input type="radio"/> IBRS Imperial Brass          | <input type="radio"/> SLH Silver Hammertone           |  |
| <input type="radio"/> BRNZ Bronze Power Coat (V6)  | <input type="radio"/> JB9005 Jet Black (RAL 9005)  | <input type="radio"/> SR3001 Signal Red (RAL 3001)    |  |
| <input type="radio"/> COPR Copper                  | <input type="radio"/> MG7003 Moss Grey (RAL 7003)  | <input type="radio"/> SUNG Sungold                    |  |
| <input type="radio"/> COPT Coppertone              | <input type="radio"/> MT6033 Mint (RAL 6033)       | <input type="radio"/> TG7042 Traffic Grey (RAL 7042)  |  |
| <input type="radio"/> CW9001 Cream (RAL 9001)      | <input type="radio"/> NB5022 Night Blue (RAL 5022) | <input type="radio"/> TW9016 Traffic White (RAL 9016) |  |

### Variations -

### Notes

## DESCRIPTION

This compact fluorescent housing offers a universal voltage 120/277V electronic ballast. The H280 series offers the reliability and versatility of the H7 family with the operating efficiencies of higher wattage compact fluorescent operation. Fixtures with an "L" suffix are shipped with one compact fluorescent lamp included.

Catalog #		Type
Project		
Comments		Date
Prepared by		

## DESIGN FEATURES

### A...Housing

Aluminum single wall construction helps dissipate heat.

### B...Plaster Frame

Housing adjusts 1-3/4" in plaster frame for different ceiling thicknesses. Includes locking screws for hanger bars and cutouts for crimping hanger bars in position.

### C...Junction Box

- Junction Box is listed for through branch circuit wiring and has seven 1/2" knockouts and four non metallic (NM) sheathed cable knockouts with true pry out slots. NM sheathed cable knockouts include built in strain relief and require no additional clamps

### D...Got NAIL!" Bar Hangers

- Bar Hanger Features include:
- Pre-installed nail easily installs

in regular lumber, engineered lumber and laminated beams

- Safety and guidance system prevents snagging, ensures smooth straight nail penetration and allows bar hangers to be easily removed if necessary.
- Automatic levelling flange aligns the housing and lets you hold the housing in place with one hand while driving nails
- Housing can be positioned at any point within 24" joist span
- Bar hangers do not need to be removed from frame for shortening
- Score lines allow "toolless" shortening for 12" joists.
- Bar hangers can be repositioned 90° on plaster frame
- Integral T-bar clip snaps onto T-bars - no additional clips required

### E...Ballast:

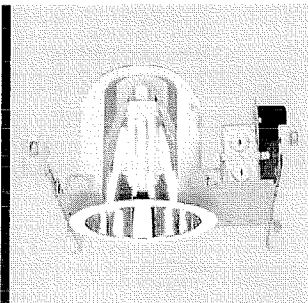
Electronic ballast is universal voltage 120V-277V, provides flicker free and noise free operation and quick starting. High ballast factor provides full light output while high power factor and low THD provide efficient electronic operation. End of life protection, sound rating A, and FCC non-consumer ratings are standard

### F...Replacement Lamps:

26 Watt - Z126TE30, 4-pin, GX24q-3, 3000°K

### Listings

- UL/cUL Damp Location
- UL/cUL Feed Through



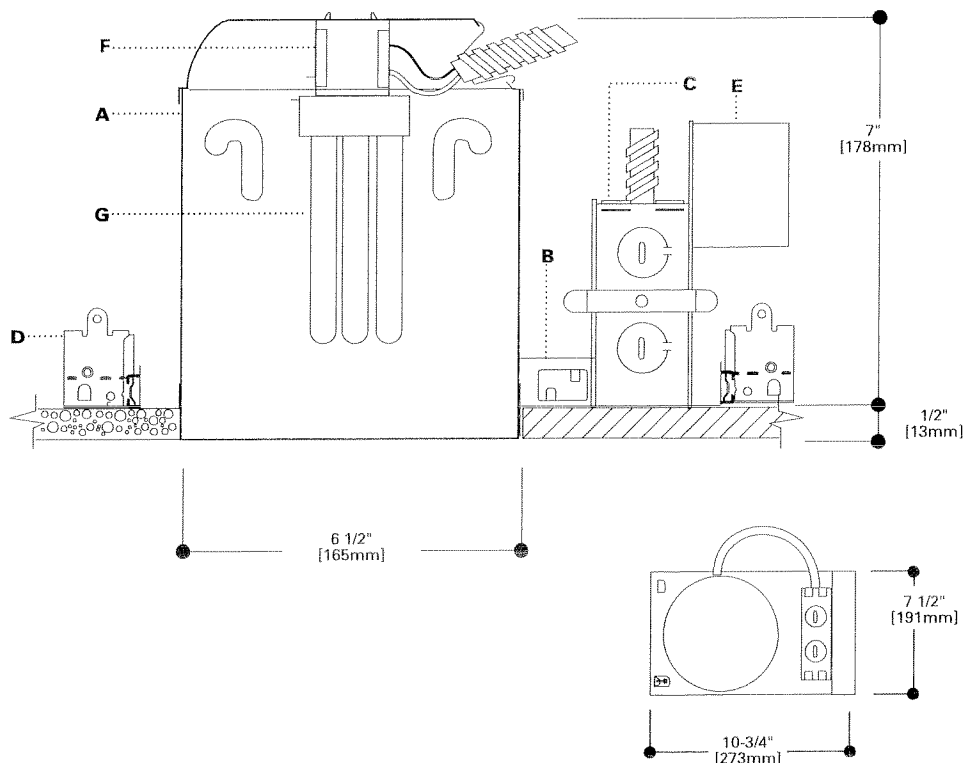
## H285E H285EL

26W Triple Twin Tube 4-pin

**Electronic Compact  
Fluorescent  
Recessed Housing**  
7"

**Non-Insulated Ceiling**

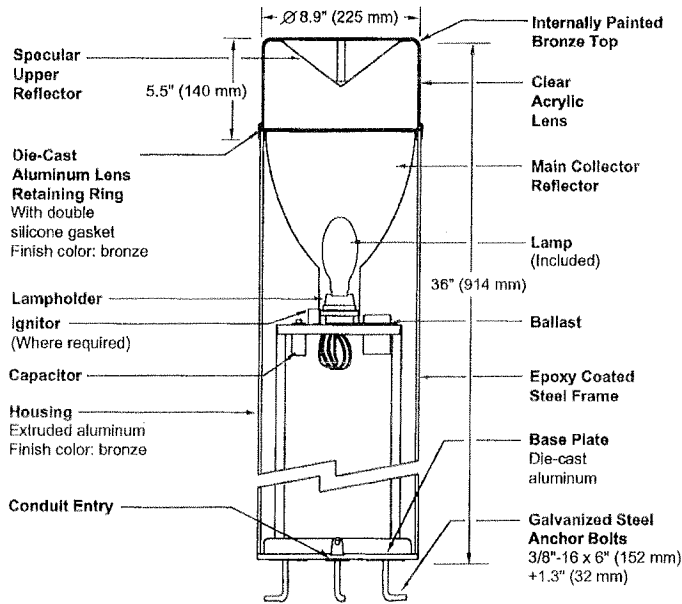
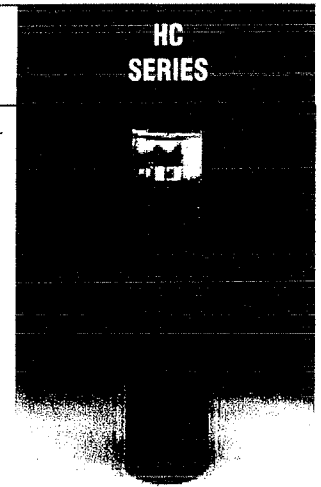
**7" TRIMS  
FOR USE IN NON-  
INSULATED CEILINGS  
OR  
INSULATED CEILINGS  
BUT INSULATION  
MUST BE KEPT 3"  
FROM ALL SIDES OF  
FIXTURE**



### ENERGY DATA

H285E, H285EL  
(1) 26W DTT or TTT 4-pin CFL  
Type: CFQ26W/G24Q or  
CFTR26W/GX24q  
Ballast: 120V-277V  
Input Watts: 28  
120V Line Amps: 0.25  
277V Line Amps: 0.11  
Power Factor: >0.98  
Ballast Factor: 1.02  
Min Start Temp: 0°F/-18°C  
120V THD: <10%  
277V THD: <15%  
EMI/RFI: FCC 47CFR Part 18 Non-  
Consumer

**CLEAR LENS — FLAT TOP**  
**ROUND BOLLARD**



Notes

SPEC #	WATTAGE	CATALOG #
<b>METAL HALIDE</b>		
<input type="checkbox"/> SPEC #	50W MH	HC405-(a)(b)
<input type="checkbox"/> SPEC #	70W MH	HC407-(a)(b)
<input type="checkbox"/> SPEC #	100W MH	HC410-(a)(b)
<b>HIGH PRESSURE SODIUM</b>		
<input type="checkbox"/> SPEC #	35W HPS	HC503-(a)(b)
<input type="checkbox"/> SPEC #	50W HPS	HC505-(a)(b)
<input type="checkbox"/> SPEC #	70W HPS	HC507-(a)(b)
<input type="checkbox"/> SPEC #	100W HPS	HC510-(a)(b)
<b>FLUORESCENT</b>		
<input type="checkbox"/> SPEC #	13W FL	HC213-(a)(b)

Specify (a) Voltage & (b) Options.

(a) VOLTAGE SUFFIX KEY	
D	120/277V (Standard: 50 – 100W MH; 50 – 70W HPS)
M	120/208/240/277V (Standard: 100W HPS)
T	120/277/347V (Canada Only) (Standard: 70 – 100W MH)
1	120V (Standard: 13W FL, 35W HPS)
2	277V
3	208V
4	240V
6	347V (Canada Only)

For voltage availability outside the US and Canada, see Bulletin TD-9 or contact your Ruud Lighting authorized International Distributor.

(b) OPTIONS (factory-installed)	
A	180° Shielded Clear Lens
-(a)F	Fusing
J	Tamperproof Lens Fasteners
-(a)P	Photocell
V	Polycarbonate Lens

Specify (a) Single Voltage — See Voltage Suffix Key

**GENERAL DESCRIPTION**

Extruded aluminum housing supplied internally with a formed and channeled 16 gauge steel frame supports the electrical components and main reflector. Housing fastens to a die-cast aluminum base with four 1/4"-20 phillips flat head screws. Base is secured to concrete footing using provided masonite template and three 3/8"-16 x 6" (152 mm) galvanized steel anchor bolts with leveling nuts and washers. Suggested poured base: 2' (610 mm) deep x 12" (305 mm) dia., depending on soil types and frost line in your area. A 3" (76 mm) dia. conduit opening is provided in the base for ease of wiring. Injection molded clear acrylic lens with specular collecting reflector attaches to the top of the housing with an over-lapping die-cast aluminum retaining ring, held by two stainless-steel allen flat head fasteners. Two silicone lens seals prevent moisture from entering the lens, while a double lip silicone seal at the top of the reflector and sealed lampholder prevent insects, dirt and moisture from entering the optical chamber.

**ELECTRICAL**

Fluorescent fixture includes a quad tube compact fluorescent lamp. HID fixtures include a clear, medium-base lamp and porcelain enclosed, 4kv-rated screw-shell-type lampholder with spring-loaded center contact. Lamp ignitor included where required. All ballast assemblies are high-power factor and use the following circuit types:

- Preheat*  
13W FL
- Reactor (120V only)*  
35W HPS
- HX — High Reactance*  
50 – 100W MH; 50 – 100W HPS

**LABELS**

ANSI lamp wattage label supplied, visible during relamping. UL Listed in the US and Canada for wet locations and enclosure classified IP65 per IEC 529 and IEC 598.

**FINISH**

Exclusive DeltaGuard® finish features an E-coat epoxy primer with medium bronze acrylic powder topcoat, providing excellent resistance to corrosion, ultraviolet degradation and abrasion. The finish is covered by our seven-year limited warranty.

**PATENT**

US 5,105,347

**ACCESSORIES**

HCL	Louver
TPS-1	Tamperproof Screwdriver



Notes  
1. ELEVATIONS SHOWN ARE IN RELATION TO CITY DATUM WHERE CITY DATUM ZERO (0.00) FEET SHALL BE ESTABLISHED AS (845.6) FEET ABOVE SEE LEVEL.

Revisions  
Issued for Approval - November 14, 2008

Project Title  
**Grand Central**

1022 West Johnson  
Drawing Title  
**South Elevation**

Project No. Drawing No.

0622 A-2.1

This document contains confidential or proprietary information of Knothe & Bruce Architects. Neither the document nor the information herein is to be reproduced, distributed, used, or disclosed, either in whole or in part, except as specifically authorized by Knothe & Bruce Architects. Knothe & Bruce Architects is a Limited Liability Company of Wisconsin.

TOP OF MECH. ROOF  
ELEV. 177.088'

TOP OF PARAPET  
ELEV. 166.9'

TOP OF PARAPET  
ELEV. 69.9'

1ST FLOOR  
ELEV. 26.4'

TYPICAL MATERIALS

MECH. PENTHOUSE, METAL PANELS

PRECAST CORNICE/PARAPET

PRECAST PANELS

ALUM. RAILING SYSTEM

DECORATIVE PANELS

BRICK VENEER

SOLDIER COURSE

PRECAST PARAPET

PRECAST PANELS

PRECAST PANELS

PRECAST CORNICE/PARAPET

EIFS

REVISED: PRECAST CONCRETE FINISH CHANGED TO EIFS FINISH, THIS AREA ONLY. EIFS FINISH TO MATCH PRECAST.

BRICK VENEER

DECORATIVE PANELS

PRECAST PANELS

EIFS

CLOCK W/ BACK-ILLUMINATED FACE

RENAISSANCE STONE VENEER

STEEL AND GLASS CANOPY

REVISION LINE

1ST FLOOR

ELEV. 26.4'

1022

1022

1022

1022

1022

1022

1022

1022

1022

1022

1022

1022

"GRAND CENTRAL" BUILDING NAME SIGNAGE, APPROX. 6'-0" W x 1'-11"

"1022" BUILDING ADDRESS SIGNAGE, APPROX. 2'-0" W x 1'-6" T

FIRE DEPARTMENT CONNECTION

REVISED: CAST STONE COURSING REVISED (RENAISSANCE STONE, COLOR "SAVANNAH")

REVISED: PRECAST CONCRETE FINISH CHANGED TO EIFS FINISH, THIS AREA ONLY. EIFS FINISH TO MATCH PRECAST.

South Elevation  
1/8" = 1'-0"



Notes  
1. ELEVATIONS SHOWN ARE IN RELATION TO CITY DATUM WHERE CITY DATUM ZERO (0.00) FEET SHALL BE ESTABLISHED AS (845.6) FEET ABOVE SEE LEVEL.

Revisions  
Issued for Approval - November 14, 2008

Project Title  
**Grand Central**

1022 West Johnson  
Drawing Title  
**West Elevation**

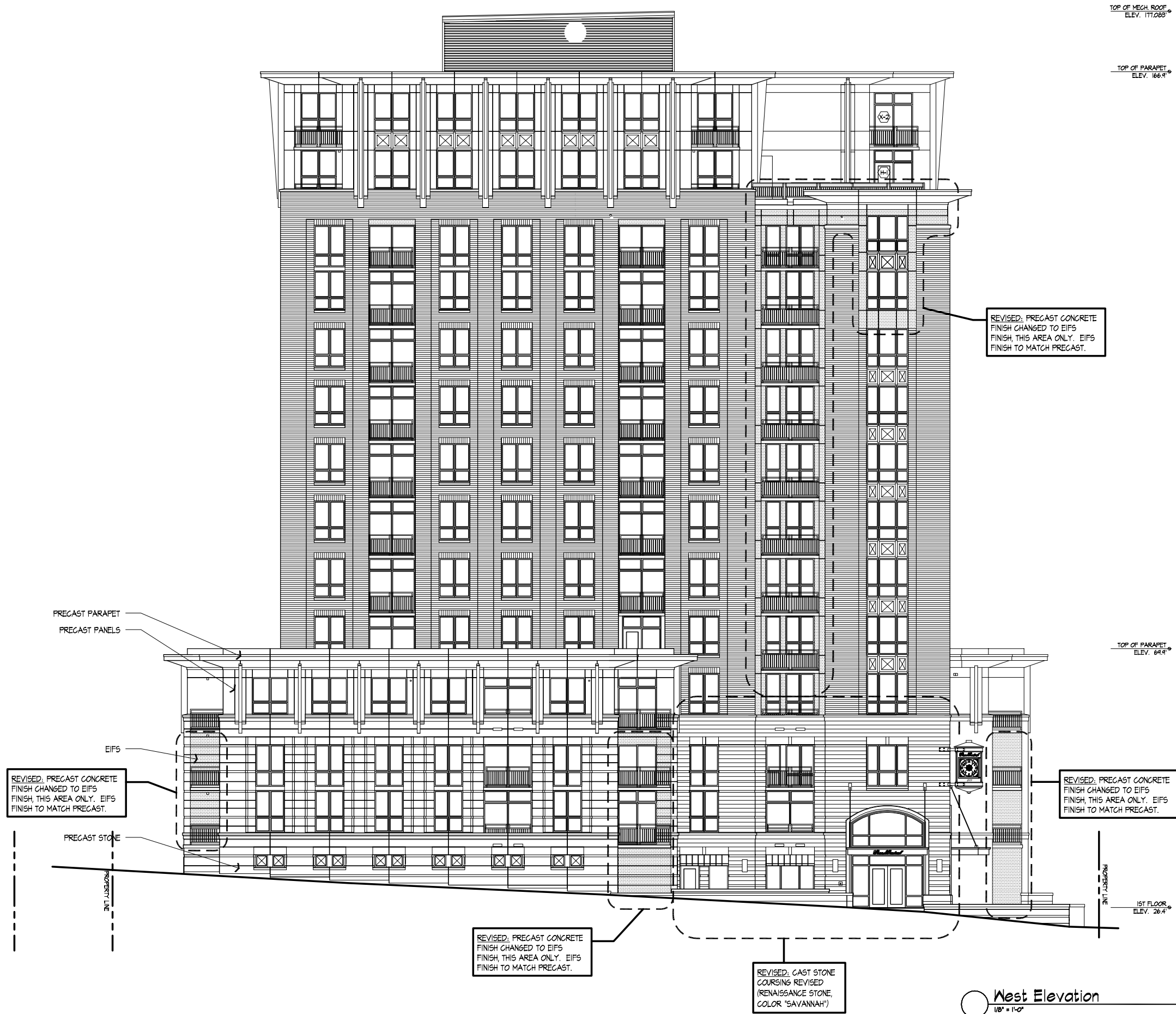
Project No.

0622

Drawing No.

A-2.2

This document contains confidential or proprietary information of Knothe & Bruce Architects. Neither the document nor the information herein is to be reproduced, distributed, used, or disclosed, either in whole or in part, except as specifically authorized by Knothe & Bruce Architects. Knothe & Bruce Architects is a Limited Liability Company of Wisconsin.



**West Elevation**  
1/8" = 1'-0"

Notes  
1. ELEVATIONS SHOWN ARE IN RELATION TO CITY DATUM WHERE CITY DATUM ZERO (0.00) FEET SHALL BE ESTABLISHED AS (845.6) FEET ABOVE SEE LEVEL.

Revisions  
Issued for Approval - November 14, 2008

Project Title  
Grand Central

1022 West Johnson  
Drawing Title  
North Elevation

Project No. Drawing No.  
0622 A-2.3

This document contains confidential or proprietary information of Knothe & Bruce Architects. Reproduction of this document for any purpose without the written consent of Knothe & Bruce Architects is prohibited. Knothe & Bruce Architects is a Limited Liability Company of Wisconsin.

TOP OF MECH. ROOF  
ELEV. 171.083'

TOP OF PARAPET  
ELEV. 166.9'

TOP OF PARAPET  
ELEV. 64.9'

1ST FLOOR  
ELEV. 26.4'

REVISED: PRECAST CONCRETE FINISH CHANGED TO EIFS FINISH, THIS AREA ONLY. EIFS FINISH TO MATCH PRECAST.

REVISED: PRECAST CONCRETE FINISH CHANGED TO EIFS FINISH, THIS AREA ONLY. EIFS FINISH TO MATCH PRECAST.

REVISED: MECHANICAL PENETRATIONS LOCATED

REVISED: PRECAST CONCRETE FINISH CHANGED TO EIFS FINISH, THIS AREA ONLY. EIFS FINISH TO MATCH PRECAST.

6AS METER  
UNIT HEATER INTAKE LOUVER:  
48" x 42" (145F)

North Elevation  
1/8" = 1'-0"

TOP OF MECH. ROOF  
ELEV. 177.083'

TOP OF PARAPET  
ELEV. 166.9'

TOP OF PARAPET  
ELEV. 64.4'

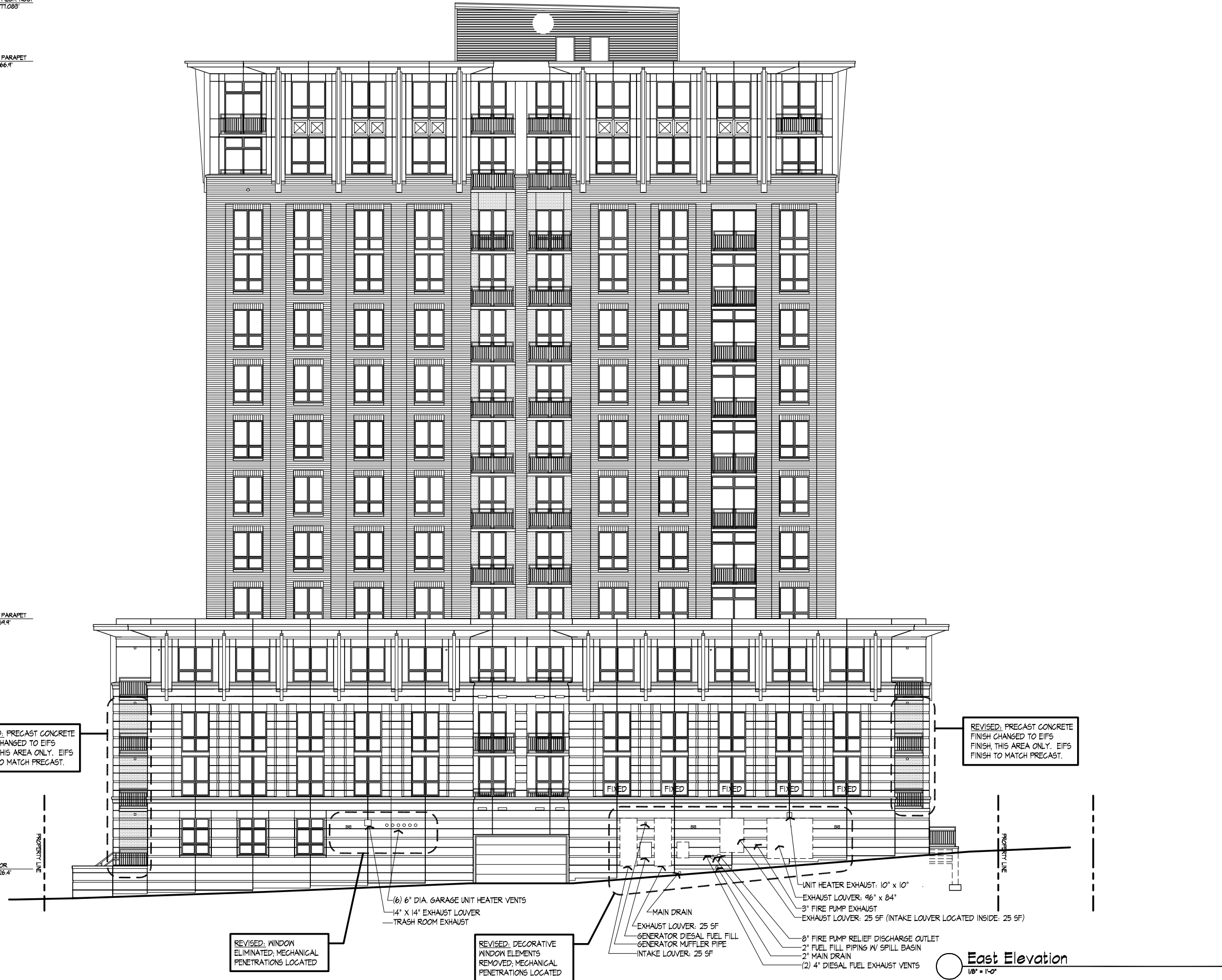
1ST FLOOR  
ELEV. 26.4'

REVISED: PRECAST CONCRETE FINISH CHANGED TO EIFS FINISH, THIS AREA ONLY. EIFS FINISH TO MATCH PRECAST.

REVISED: PRECAST CONCRETE FINISH CHANGED TO EIFS FINISH, THIS AREA ONLY. EIFS FINISH TO MATCH PRECAST.

REVISED: WINDOW ELIMINATED; MECHANICAL PENETRATIONS LOCATED

REVISED: DECORATIVE WINDOW ELEMENTS REMOVED; MECHANICAL PENETRATIONS LOCATED



East Elevation  
1/8" = 1'-0"

Revisions  
Issued for Approval - November 14, 2008

Project Title  
Grand Central

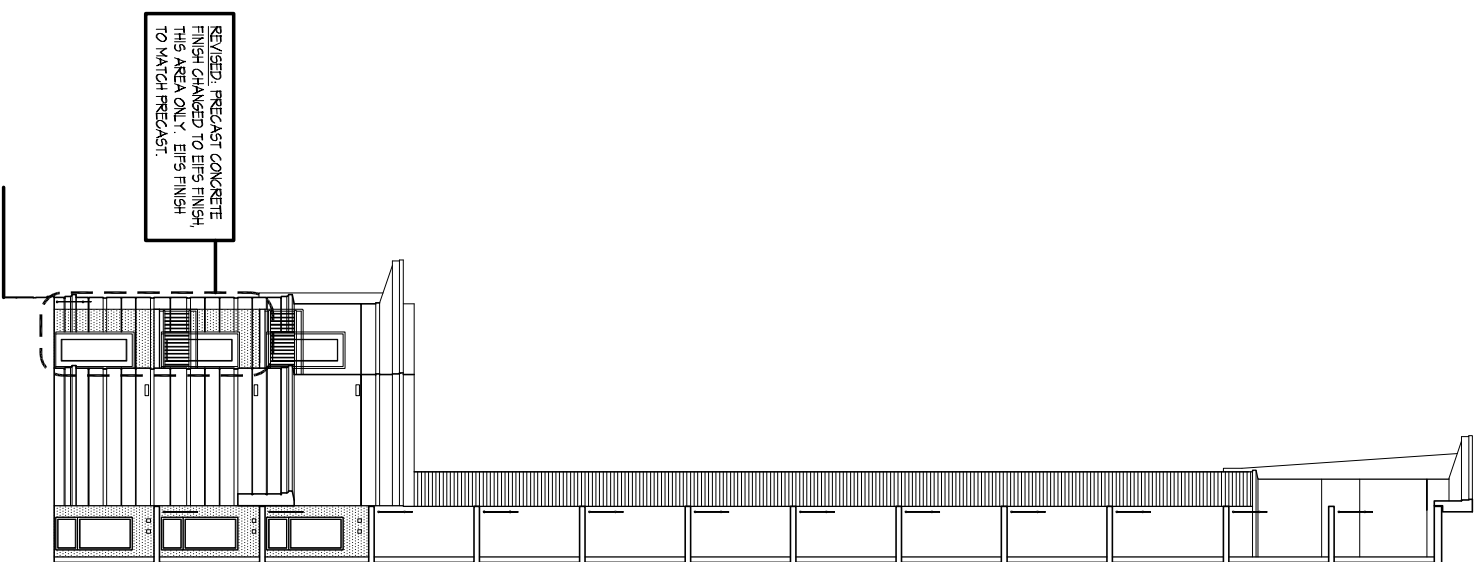
1022 West Johnson  
Drawing Title  
East Elevation

Project No. 0622 Drawing No. A-2.4

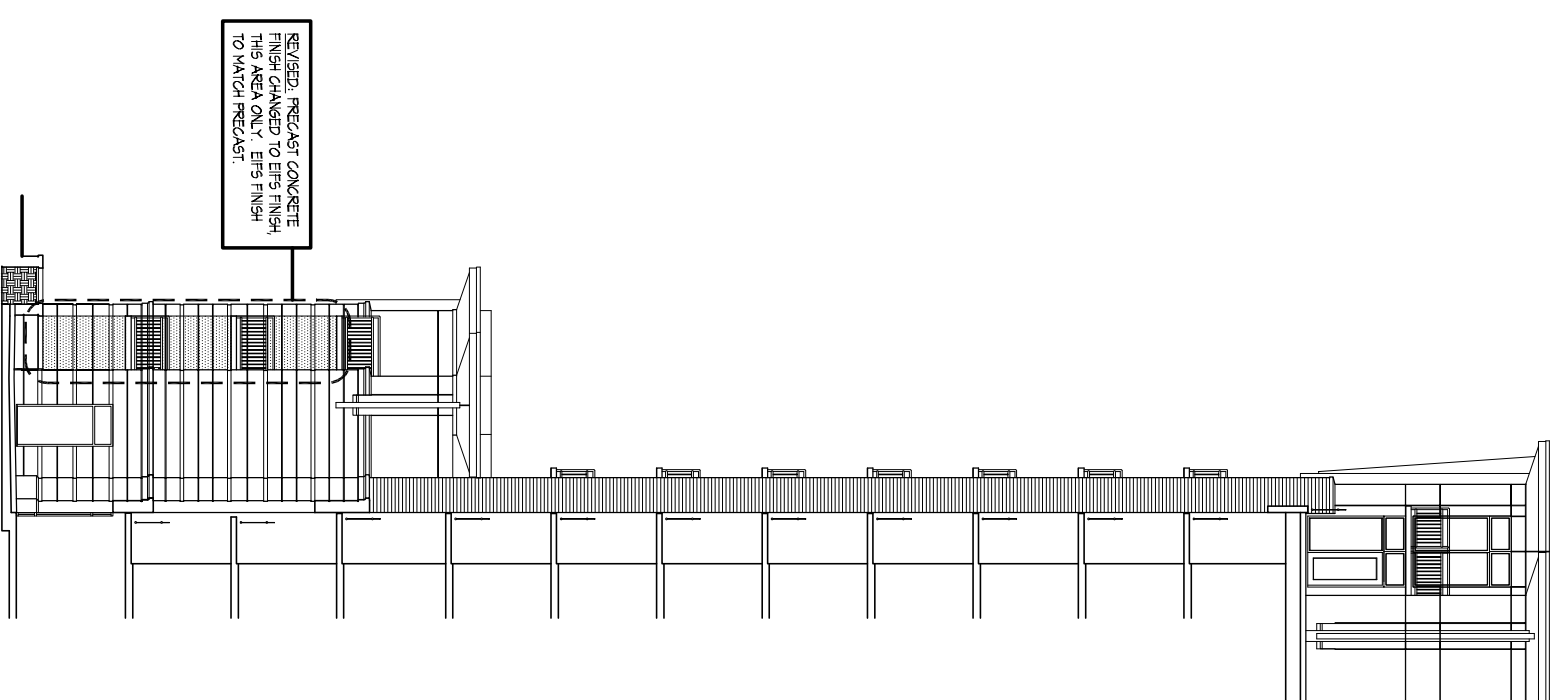
This document contains confidential or proprietary information of Knothe & Bruce Architects. Neither the document nor the information herein is to be reproduced, distributed, used, or disclosed, either in whole or in part, except as specifically authorized by Knothe & Bruce Architects. Knothe & Bruce Architects is a Limited Liability Company of Wisconsin.

Consultant

Notes  
1. ELEVATIONS SHOWN ARE IN RELATION TO CITY DTM  
MIDDLE CITY DATUM ZERO (0.00) FEET SHALL BE  
ESTABLISHED AS (845.6) FEET ABOVE SEE LEVEL.



**B**  
1/8" = 1'-0"  
Hidden Elevation



**A**  
1/8" = 1'-0"  
Hidden Elevation

Revisions  
Issued for Approval - November 14, 2008

Project Title  
Grand Central

1022 West Johnson  
Drawing Title  
Hidden Elevations

Project No. 0622  
Drawing No. A-2.5

The documents contained herein are the property of KNOTHE & BRUCE ARCHITECTS. They are to be used only for the project and site for which they were prepared. No part of these documents may be reproduced or transmitted in any form or by any means, electronic, mechanical, photocopying, recording, or by any information storage and retrieval system, without the prior written permission of KNOTHE & BRUCE ARCHITECTS.