

QUAM ENGINEERING, LLC 4604 Sigelkow Road, Suite A - McFarland, WI 53558 (608) 838-7750 \RD-10-13\RD10BASE.DWG

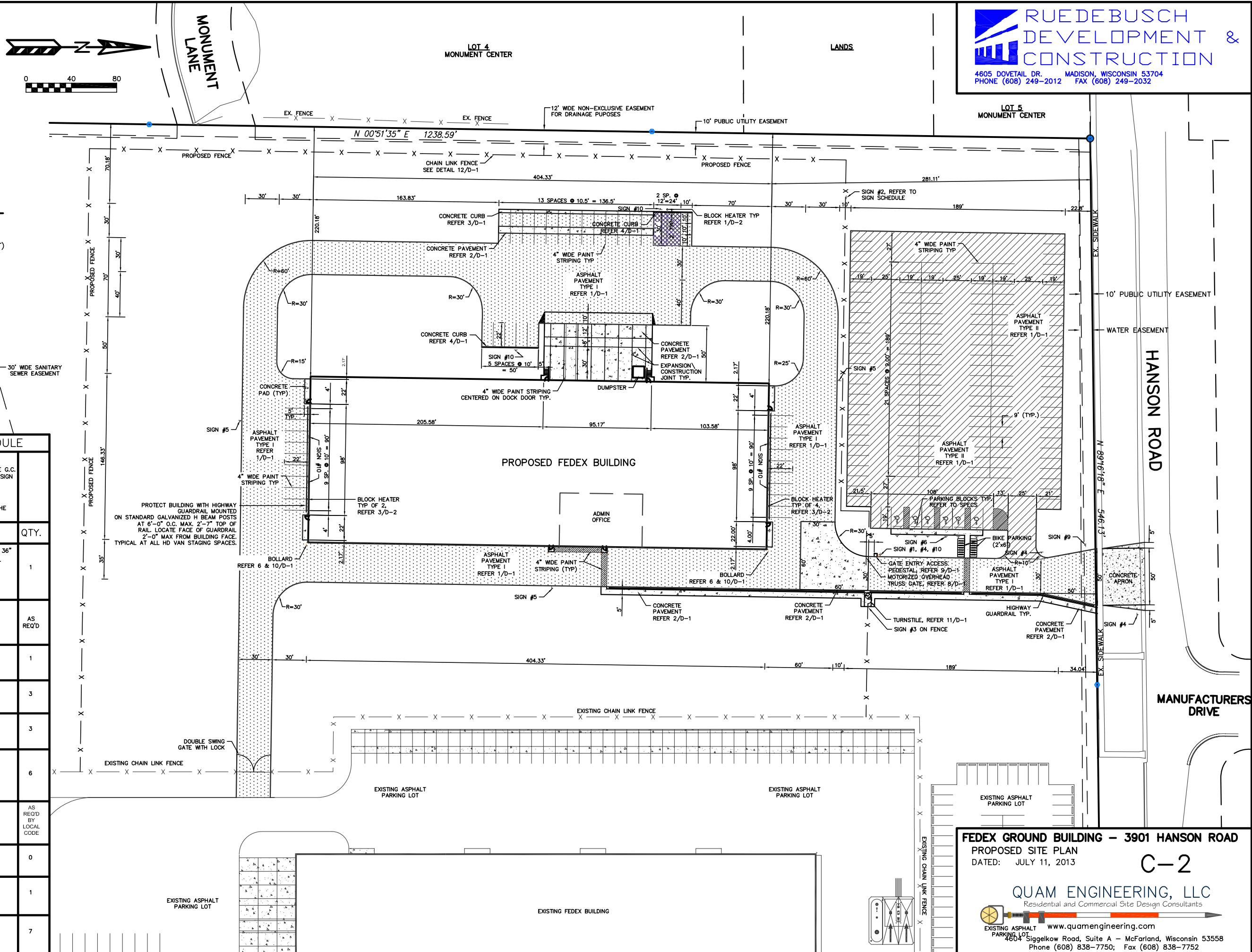
PARKING LOT PLAN SITE INFORMATION BLOCK

Site Address	3901 HANSON ROAD
Site acreage (total)	13.76 ACRES
Number of building stories (above grade)	1
Building height	28 FEET
DSPS type of construction (new structures or additions)	IBB
Total square footage of building	59,167 SQUARE FEET
Use of property	DISTRIBUTION FACILITY
Gross square feet of office	3,431
Gross square feet of retail area	N/A
Number of employees in warehouse	115
Number of employees in production	N/A
Capacity of restaurant/place of assembly	N/A
Number of bicycle stalls shown	15
Number of Parking stalls:	
Small Car	0
Large Car	141
Accessible	6
Total	147
Number of trees shown (See Landscape Plan)	

- LEGEND:**
- ASPHALT PAVEMENT TYPE I
 - ASPHALT PAVEMENT TYPE II
 - ASPHALT PAVEMENT TYPE I (W/ SEALCOAT)
 - CONCRETE PAD

STATION SITE SIGN SCHEDULE

SIGN #	DESCRIPTION	QTY.
1	NOTICE - NO ADMITTANCE UNAUTHORIZED - 24" x 36" UNAUTHORIZED PERSONS OR PRIVATE VEHICLES NOT ALLOWED BEYOND THIS POINT. VIOLATORS WILL BE PROSECUTED. REFERENCE: TAPCO PART NO. 373-01091 IBIS SIGNS PART NO. 11-2436A	1
2	NO TRESPASSING - 18" x 12" REFERENCE: TAPCO PART NO. 373-04409 IBIS SIGNS PART NO. 11-1812B (FOR PERIMETER FENCE) INSTALL AT 100'-0" INTERVALS	AS REQ'D
3	ALL VISITORS MUST REPORT TO OFFICE - 18" x 18" REFERENCE: TAPCO PART NO. 373-00844 IBIS SIGNS PART NO. 11-1818C	1
4	STOP SIGN - STANDARD 24" x 24" REFERENCE: TAPCO PART NO. 373-01632 IBIS SIGNS PART NO. 11-R1-1	3
5	SPEED LIMIT 10 MPH - 24" x 18" REFERENCE: TAPCO PART NO. 373-04730 IBIS SIGNS PART NO. 11-R2-1	3
6	ADA ACCESSIBILITY SIGN - 18" x 12" REFERENCE: TAPCO PART NO. 373-00081D9-6 IBIS SIGNS PART NO. 11-R7-8 PC ALUMINUM W/VINYL GRAPHIC (SEE NOTE #5)	6
7	VAN ACCESSIBILITY SIGN - 9" x 18" REFERENCE: TAPCO PART NO. 373-04828 IBIS SIGNS PART NO. 11-R7-8A (SEE NOTE #5)	AS REQ'D BY LOCAL CODE
8	MOTORCYCLE PARKING ONLY SIGN - 18" x 12" REFERENCE: TAPCO PART NO. 373-05906 IBIS SIGNS PART NO. 11-18M0	0
9	FACILITY ADDRESS SIGN - 36"H x 60"W x 72" OAH (MIN.) REF. BLAIR PART NO. D411G COORDINATE WITH AUTHORITY HAVING JURISDICTION	1
10	NO ENGINE IDLING SIGN - 20" x 24" REFERENCE: TAPCO PART NO. 100092 IBIS SIGNS PART NO. 11-2024D	7



RUEDEBUSCH DEVELOPMENT & CONSTRUCTION
 4605 DOVETAIL DR. MADISON, WISCONSIN 53704
 PHONE (608) 249-2012 FAX (608) 249-2032

FEDEX GROUND BUILDING - 3901 HANSON ROAD
 PROPOSED SITE PLAN
 DATED: JULY 11, 2013
C-2
QUAM ENGINEERING, LLC
 Residential and Commercial Site Design Consultants
 4604 Sigelkow Road, Suite A - McFarland, Wisconsin 53558
 Phone (608) 838-7750; Fax (608) 838-7752