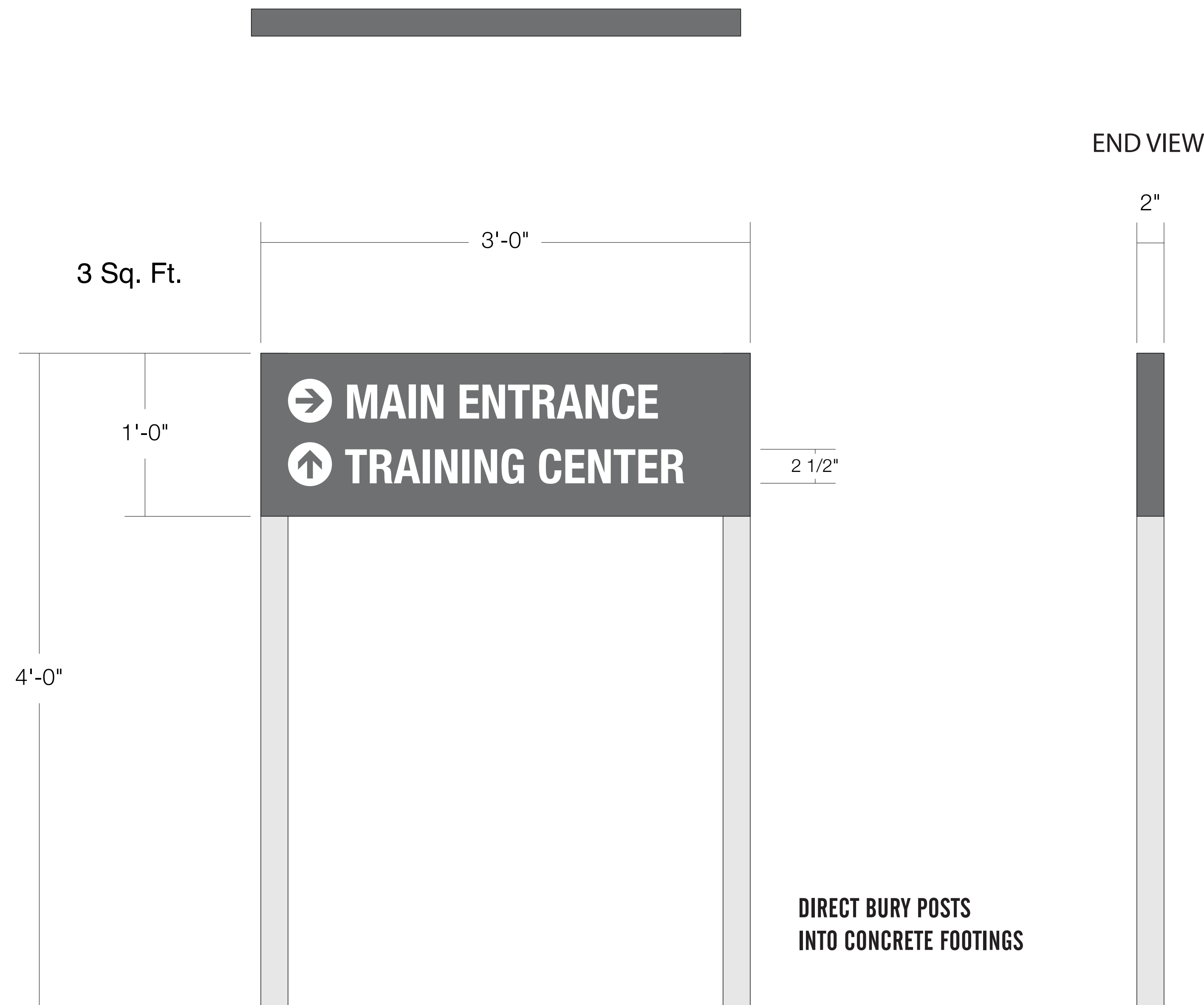


**SIGN APPROVED AS IS PER MADISON SIGN ORDINANCE**

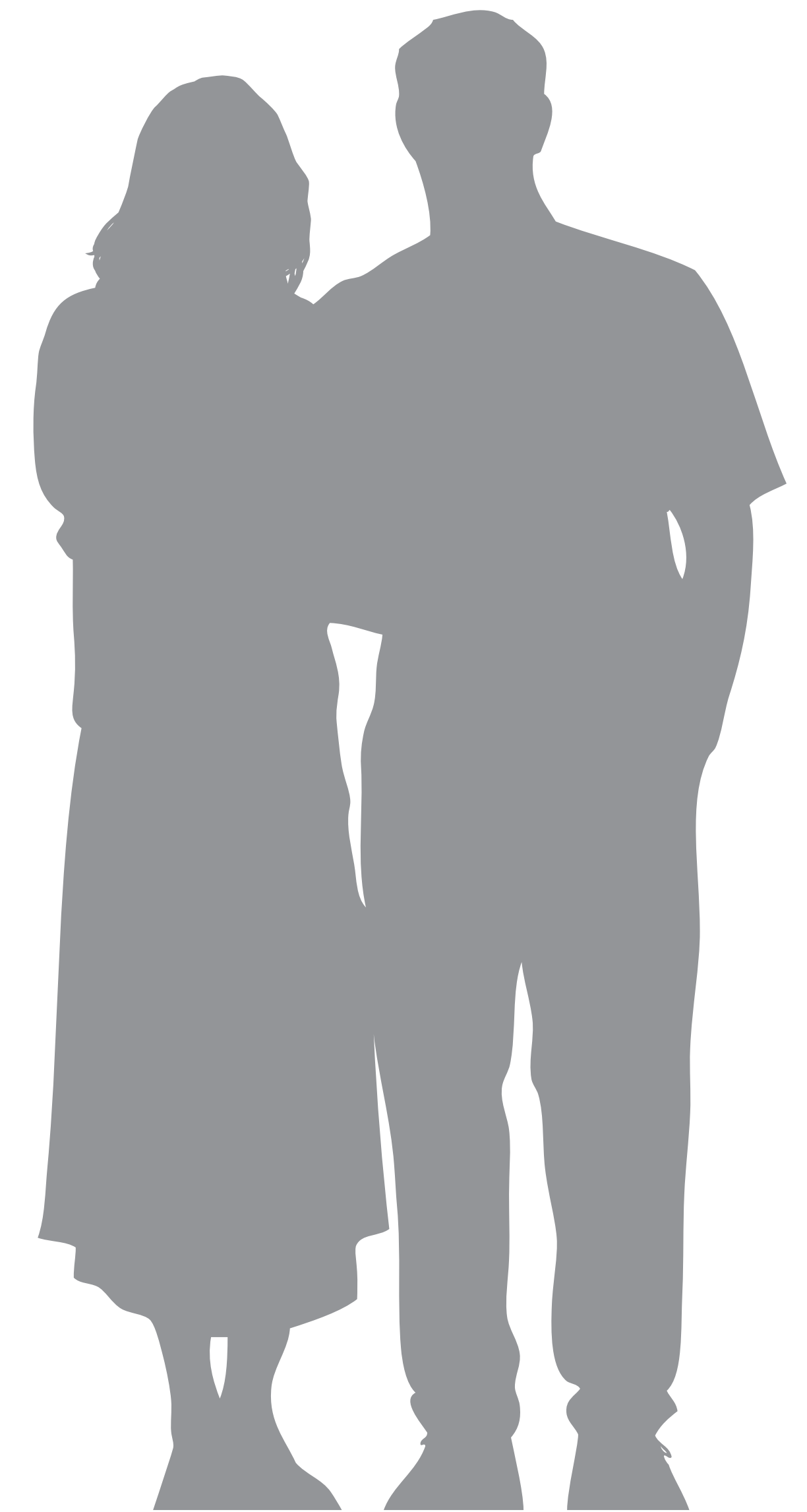
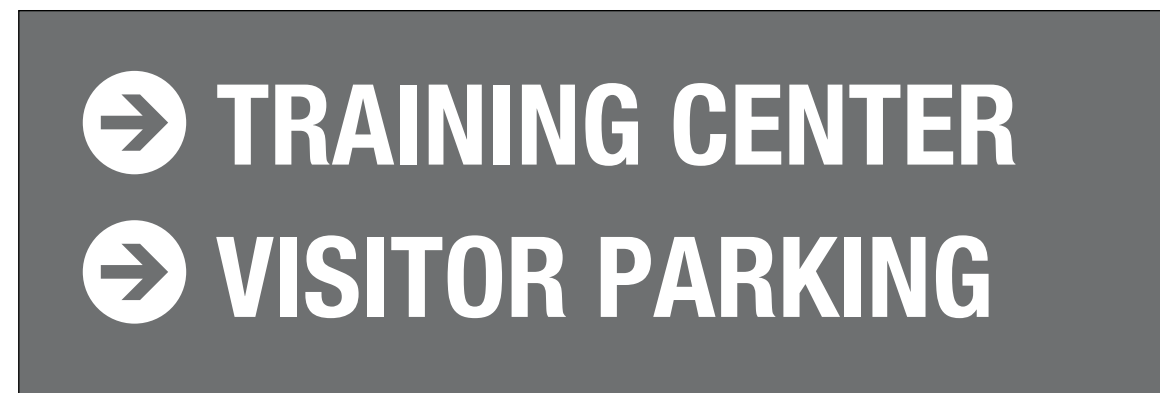
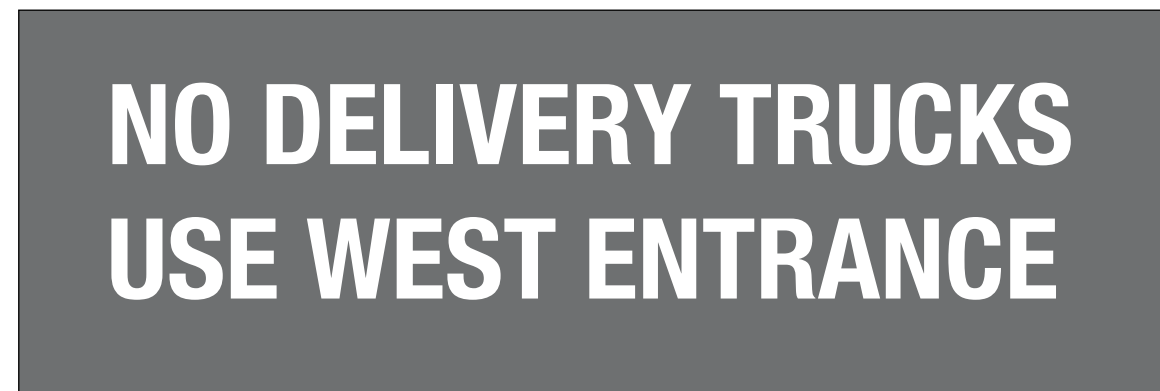
TOP VIEW



**POST & PANEL SIGN 3 φ EACH**

FOUR (4) NEW NON-ILLUMINATED POST & PANEL DIRECTIONAL SIGNS  
 1/8" ALUMINUM SIGN FACES w/ 2" X 2" X 4' SQ ALUMINUM TUBE SUPPORTS  
 PANELS & POSTS PAINTED, (COLOR T.B.D.) w/ 3M WHITE REFLECTIVE VINYL GRAPHICS  
 DIRECT BURY POSTS INTO TYPICAL CONCRETE FOOTINGS

NOTE: Actual Copy T.B.D.



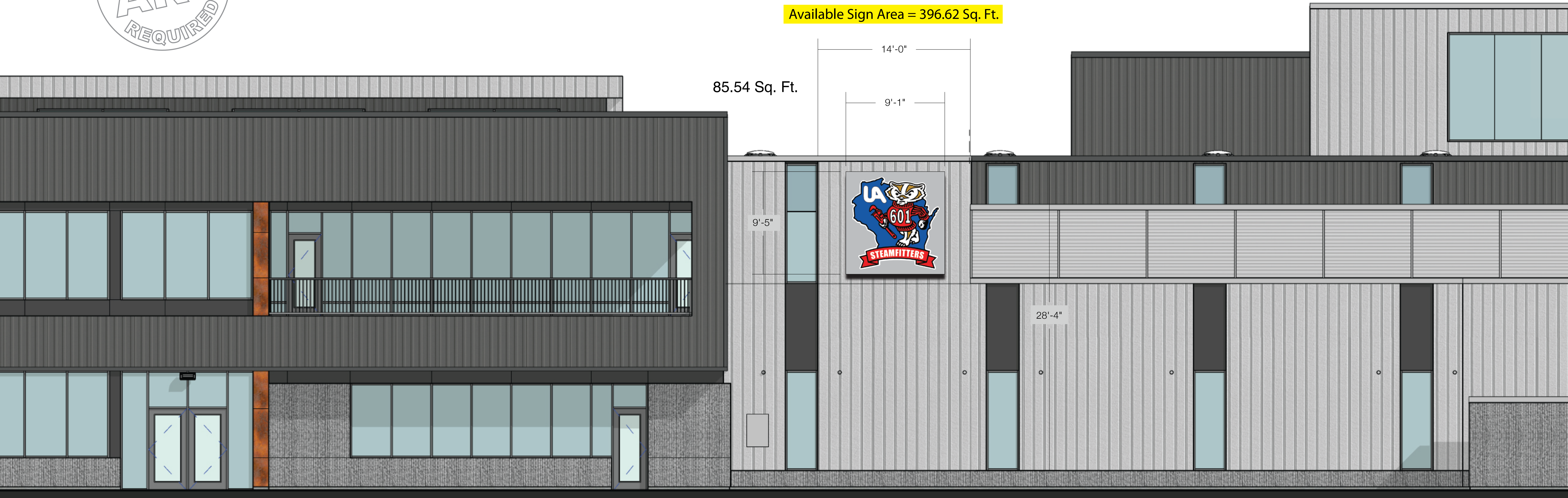
DIRECT BURY POSTS  
 INTO CONCRETE FOOTINGS





**SIGN APPROVED AS IS PER MADISON SIGN ORDINANCE**

Available Sign Area = 396.62 Sq. Ft.



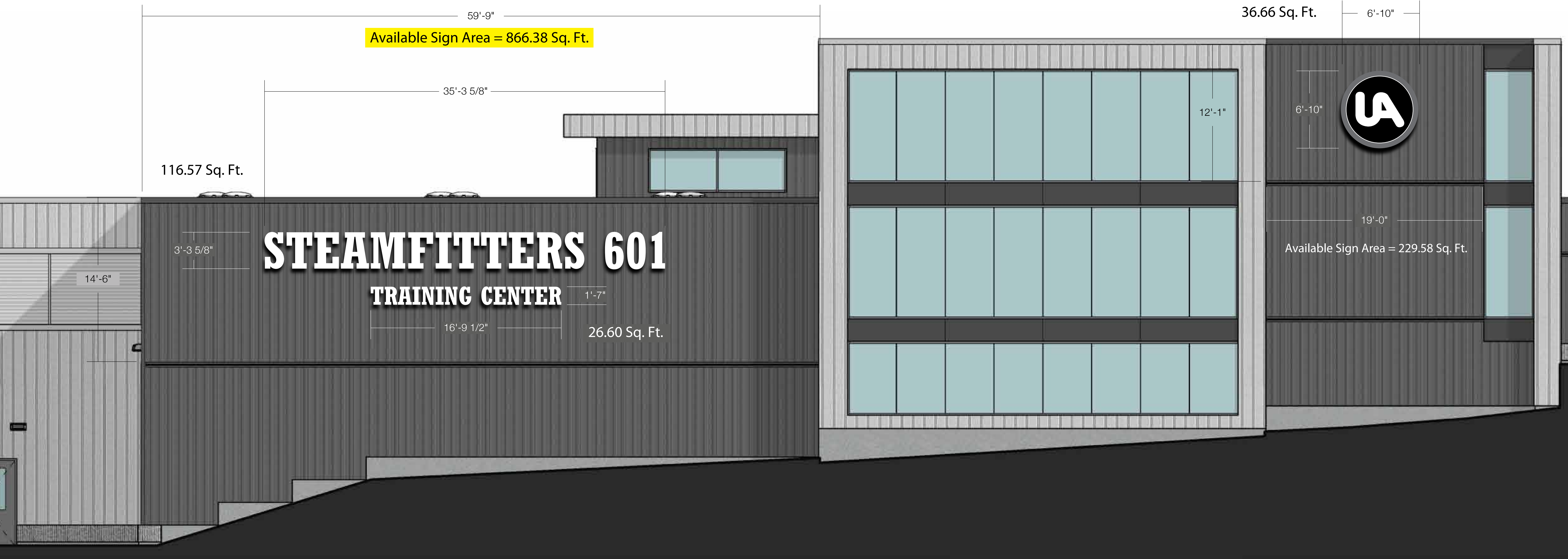
2  
A201

EAST ELEVATION

1/4" = 1'-0"



NOTE: "UA" Logo Illuminates Blue  
w/ a Gold Halo



NOTE: "STEAMFITTERS 601" Illuminates Blue  
"TRAINING CENTER" Illuminates Gold

1  
A201

**NORTH ELEVATION**

1/4" = 1'-0"

116.57 Sq. Ft.  
26.60 Sq. Ft.  
+ 36.66 Sq. Ft.  

---

179.83 Sq. Ft. Total



SIGNS

4085 North 128th Street, Brookfield, WI 5300  
p. 262.781.1500  
f. 262.781.1540  
www.lembergelectric.com



NOTE: "STEAMFITTERS 601" Illuminates Blue  
 "TRAINING CENTER" Illuminates Gold

1  
 A201

NORTH ELEVATION

1/4" = 1'-0"

56.74 Sq. Ft.  
 26.60 Sq. Ft.  
 + 36.66 Sq. Ft.  
 120.00 Sq. Ft. Total



SIGNS

4085 North 128th Street, Brookfield, WI 5300  
 p. 262.781.1500  
 f. 262.781.1540  
 www.lembergelectric.com





3  
A201

**SOUTH ELEVATION**

1/4" = 1'-0"

56.75 Sq. Ft.  
+ 19.63 Sq. Ft.  
76.38 Sq. Ft. Total



Rail Mount Example



4085 North 128th Street, Brookfield, WI 5300  
p. 262.781.1500  
f. 262.781.1540  
www.lembergelectric.com





**SIGN APPROVED AS IS PER MADISON SIGN ORDINANCE**

**3 SOUTH ELEVATION**  
A201 1/4" = 1'-0"



Rail Mount Example



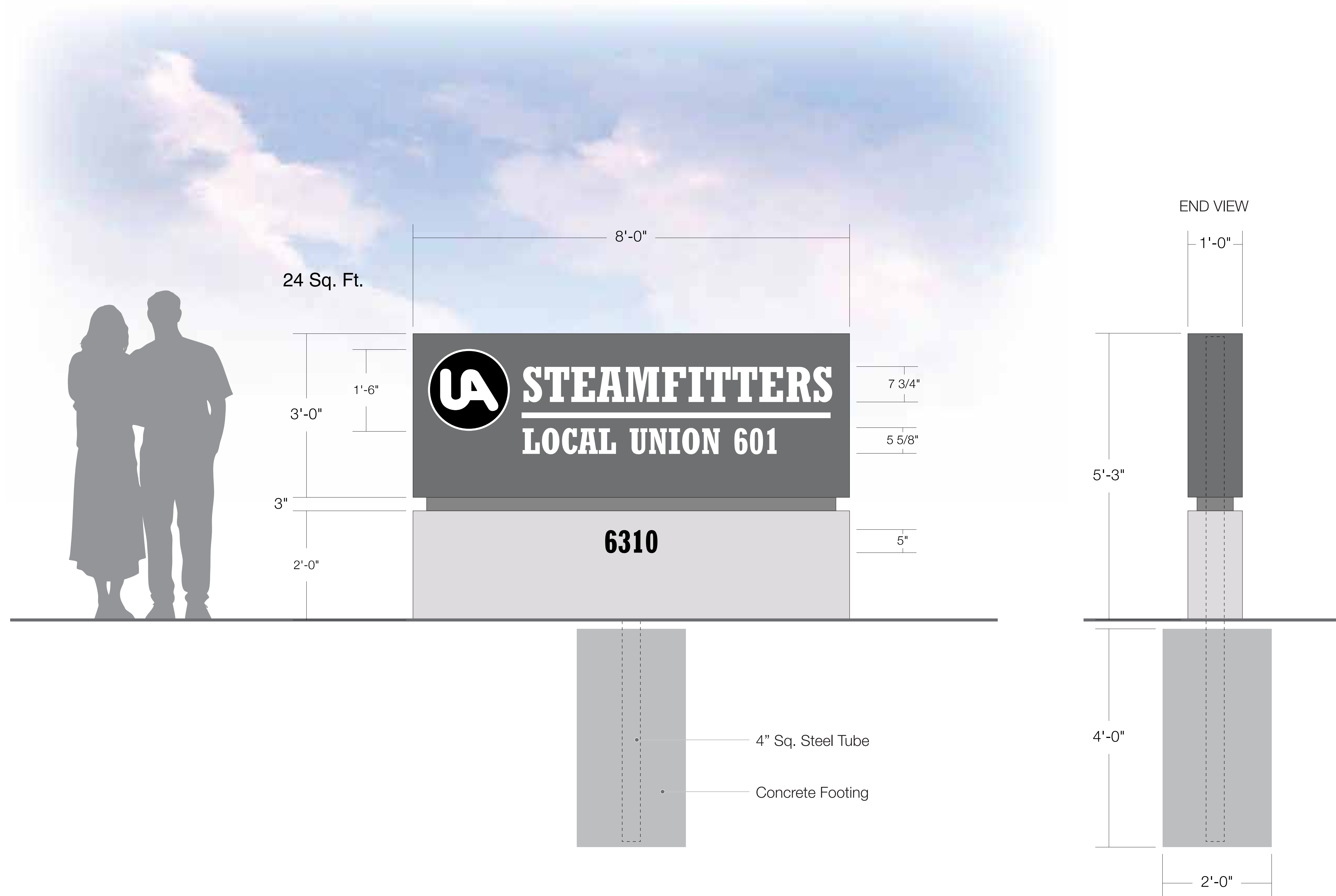








Steamfitters Local 601 - Double Sided Monument Sign / Illuminated



SIGNS

4085 North 128th Street, Brookfield, WI 5300  
p. 262.781.1500  
f. 262.781.1540  
www.lembergelectric.com



