

DATE	04-07-10
DRAWN BY	RJJ
REVISION	
DATE	
REVISION	

818 N Meadowbrook Ln  
 Waunakee, WI 53597  
 phone (608) 849-9378  
 fax (608) 237-2129

**PROFESSIONAL ENGINEERING LLC**

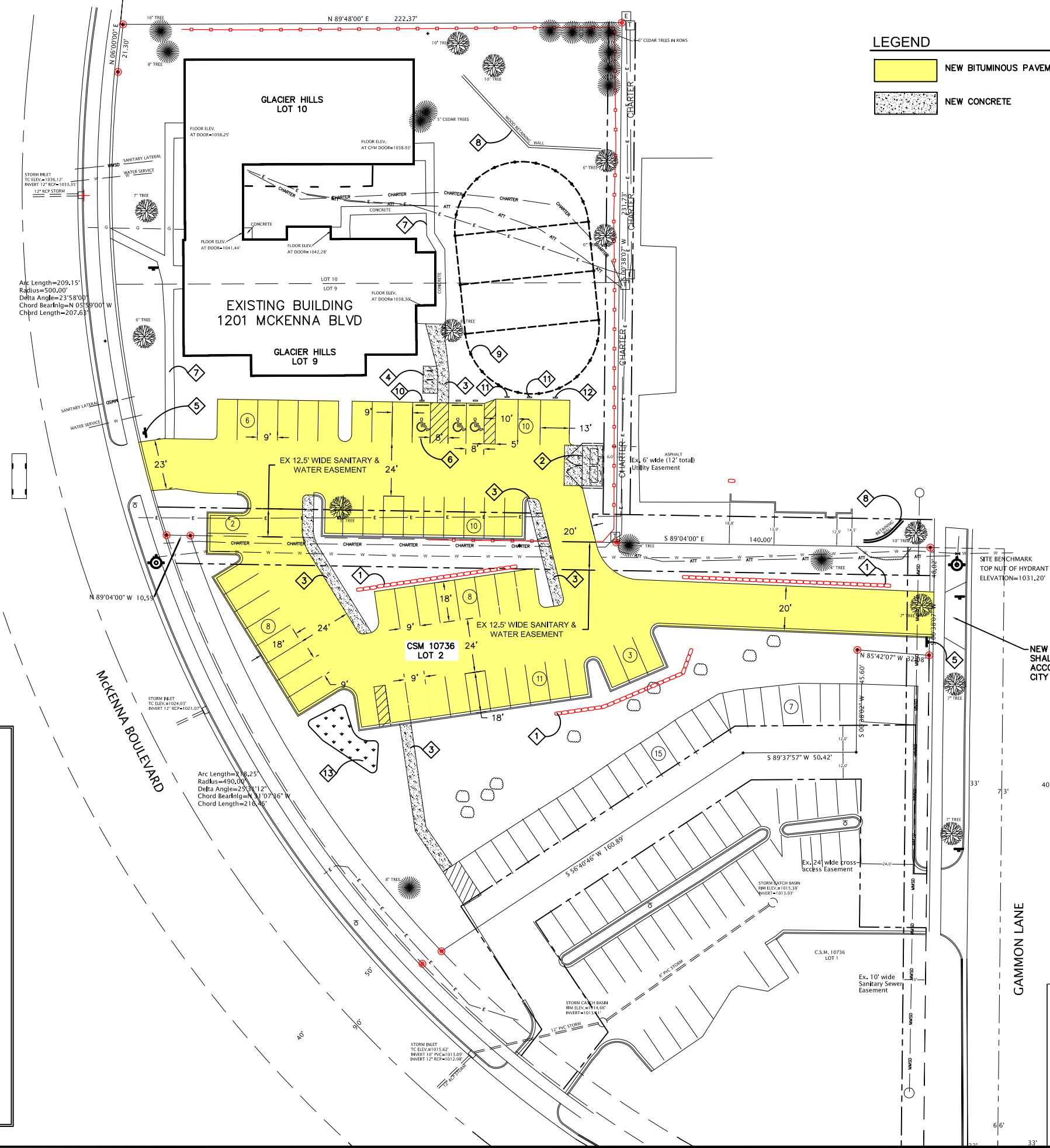
**WYC PARKING LOT IMPROVEMENTS  
 SITE PLAN**

MADISON, WISCONSIN

**C101**

- LEGEND**
- NEW BITUMINOUS PAVEMENT
  - NEW CONCRETE

- PLAN KEY**
- ① NEW RETAINING WALL
  - ② NEW TRASH ENCLOSURE
  - ③ NEW SIDEWALK
  - ④ NEW BICYCLE PARKING
  - ⑤ NEW 7' HIGH STOP SIGN
  - ⑥ NEW VAN ACCESSIBLE STALL
  - ⑦ EXISTING SIDEWALK
  - ⑧ EXISTING RETAINING WALL
  - ⑨ 48' CIRCUS TENT STAKE LOCATION (TYP)
  - ⑩ NEW ACCESSIBLE PARKING SIGN
  - ⑪ NEW VAN PARKING SIGN
  - ⑫ NEW BUS PARKING SIGN
  - ⑬ BIORETENTION AREA



**SITE INFORMATION**

SITE ADDRESS: 1217 MCKENNA BLVD  
 1201 MCKENNA BLVD  
 1117 MCKENNA BLVD

SITE ACREAGE TOTAL: 87,313 SF (2.00 ACRES)

NUMBER OF EXISTING BUILDING STORIES = 1

BUILDING HEIGHT = N/A

TYPE OF CONSTRUCTION: N/A

TOTAL SQUARE FOOTAGE OF EXISTING BUILDING = 12,000 SF

USE OF PROPERTY: YOUTH CENTER

GROSS SQUARE FEET OF OFFICE: 10,500 SF

GROSS SQUARE FEET OF RETAIL: N/A

NUMBER OF EMPLOYEES IN WAREHOUSE: N/A

NUMBER OF EMPLOYEES IN PRODUCTION AREA: N/A

CAPACITY OF RESTAURANT/PLACE OF ASSEMBLY: N/A

NUMBER OF BICYCLE STALLS SHOWN: 6

NUMBER OF PARKING STALLS:  
 LARGE CAR: 58  
 ACCESSIBLE: 3  
 LOWER LEVEL PARKING: 22  
 TOTAL: 80

NUMBER OF TREES SHOWN: SEE LANDSCAPE PLAN