

**NOTES:**

THIS EXHIBIT IS A GRAPHIC REPRESENTATION AND IS FOR REFERENCE PURPOSES ONLY. REFER TO THE CONVEYANCE DOCUMENT FOR PARCEL RELATED DETAILS.

THE PURPOSE OF THE TLE IS FOR GRADING, UNLESS OTHERWISE NOTED.

HORIZONTAL POSITIONS SHOWN ON THIS EXHIBIT ARE WISCONSIN COUNTY COORDINATE REFERENCE SYSTEM (WISCRS), DANE COUNTY, NAD83 (2011), IN US SURVEY FEET. POSITIONS SHOWN ARE GRID COORDINATES, GRID BEARINGS, AND GRID DISTANCES. GRID DISTANCES MAY BE USED AS GROUND DISTANCES.

R/W PROJECT NUMBER: 5992-07-18

SHEET NUMBER: 1 OF 1

RELOCATION ORDER  
CITY OF MADISON, S GAMMON ROAD  
WATTS ROAD INTERSECTION

LOCAL STREETS

DANE COUNTY

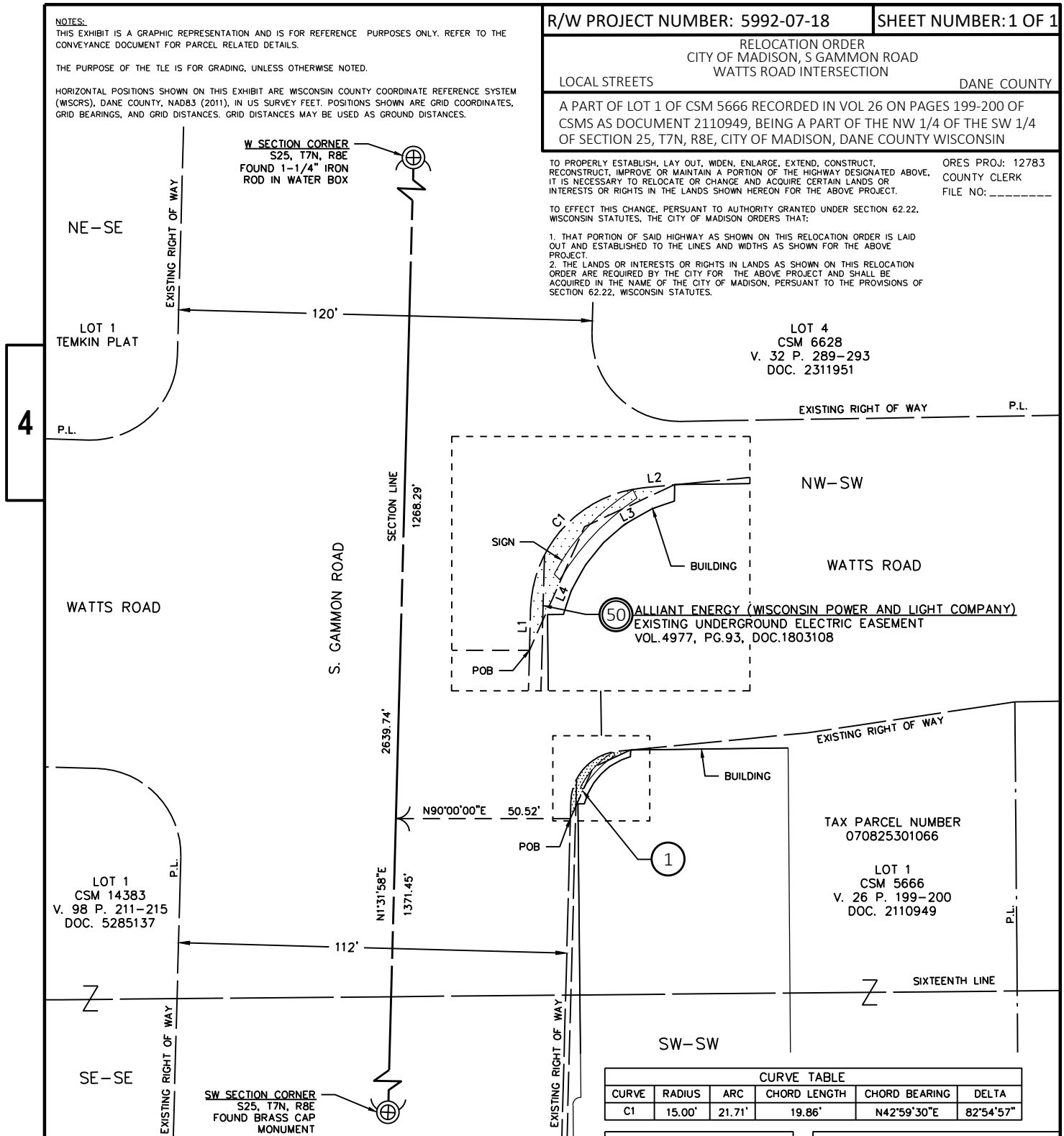
A PART OF LOT 1 OF CSM 5666 RECORDED IN VOL 26 ON PAGES 199-200 OF CSMs AS DOCUMENT 2110949, BEING A PART OF THE NW 1/4 OF THE SW 1/4 OF SECTION 25, T7N, R8E, CITY OF MADISON, DANE COUNTY WISCONSIN

TO PROPERLY ESTABLISH, LAY OUT, WIDEN, ENLARGE, EXTEND, CONSTRUCT, RECONSTRUCT, IMPROVE OR MAINTAIN A PORTION OF THE HIGHWAY DESIGNATED ABOVE, IT IS NECESSARY TO RELOCATE OR CHANGE AND ACQUIRE CERTAIN LANDS OR INTERESTS OR RIGHTS IN THE LANDS SHOWN HEREON FOR THE ABOVE PROJECT.

ORES PROJ: 12783  
COUNTY CLERK  
FILE NO: \_\_\_\_\_

TO EFFECT THIS CHANGE, PURSUANT TO AUTHORITY GRANTED UNDER SECTION 62.22, WISCONSIN STATUTES, THE CITY OF MADISON ORDERS THAT:

1. THAT PORTION OF SAID HIGHWAY AS SHOWN ON THIS RELOCATION ORDER IS LAID OUT AND ESTABLISHED TO THE LINES AND WIDTHS AS SHOWN FOR THE ABOVE PROJECT.
2. THE LANDS OR INTERESTS OR RIGHTS IN LANDS AS SHOWN ON THIS RELOCATION ORDER ARE REQUIRED BY THE CITY FOR THE ABOVE PROJECT AND SHALL BE ACQUIRED IN THE NAME OF THE CITY OF MADISON, PURSUANT TO THE PROVISIONS OF SECTION 62.22, WISCONSIN STATUTES.



NW-SW

WATTS ROAD

TAX PARCEL NUMBER  
070825301066

LOT 1  
CSM 5666  
V. 26 P. 199-200  
DOC. 2110949

SW-SW

SIXTEENTH LINE

**CURVE TABLE**

| CURVE | RADIUS | ARC    | CHORD LENGTH | CHORD BEARING | DELTA     |
|-------|--------|--------|--------------|---------------|-----------|
| C1    | 15.00' | 21.71' | 19.86'       | N42°59'30"E   | 82°54'57" |

**LINE TABLE**

| SEGMENT | BEARING     | DISTANCE |
|---------|-------------|----------|
| L1      | N01°32'01"E | 4.98'    |
| L2      | N84°26'59"E | 3.72'    |
| L3      | S64°57'04"W | 11.89'   |
| L4      | S24°02'04"W | 16.24'   |

APPROVED FOR THE  
CITY OF MADISON

RELOCATION ORDER APPROVED BY THE  
COMMON COUNCIL  
RESOLUTION: \_\_\_\_\_ FILE ID: \_\_\_\_\_

DATE: \_\_\_\_\_  
EFFECTIVE: \_\_\_\_\_ CITY CLERK

RELOCATION ORDER APPROVED BY THE  
COMMON COUNCIL

DATE: \_\_\_\_\_  
EXECUTIVE SECRETARY

RELOCATION ORDER APPROVED BY THE  
BOARD OF PUBLIC WORKS

DATE: \_\_\_\_\_  
EXECUTIVE SECRETARY

**SCHEDULE OF LANDS  
& INTERESTS REQUIRED**

OWNERS NAMES ARE SHOWN FOR REFERENCE PURPOSES ONLY AND ARE SUBJECT TO CHANGE PRIOR TO THE TRANSFER OF LAND INTERESTS TO THE CITY OF MADISON

| PARCEL NUMBER | OWNER(S)        | INTEREST REQUIRED | TLE S.F. |
|---------------|-----------------|-------------------|----------|
| 1             | 701 SHOPPES INC | TLE               | 54       |

**UTILITY INTERESTS REQUIRED**

| UTILITY NUMBER | UTILITY OWNER(S) | INTEREST REQUIRED           |
|----------------|------------------|-----------------------------|
| 50             | ALLIANT ENERGY   | TEMPORARY RELEASE OF RIGHTS |

SCALE, FEET

