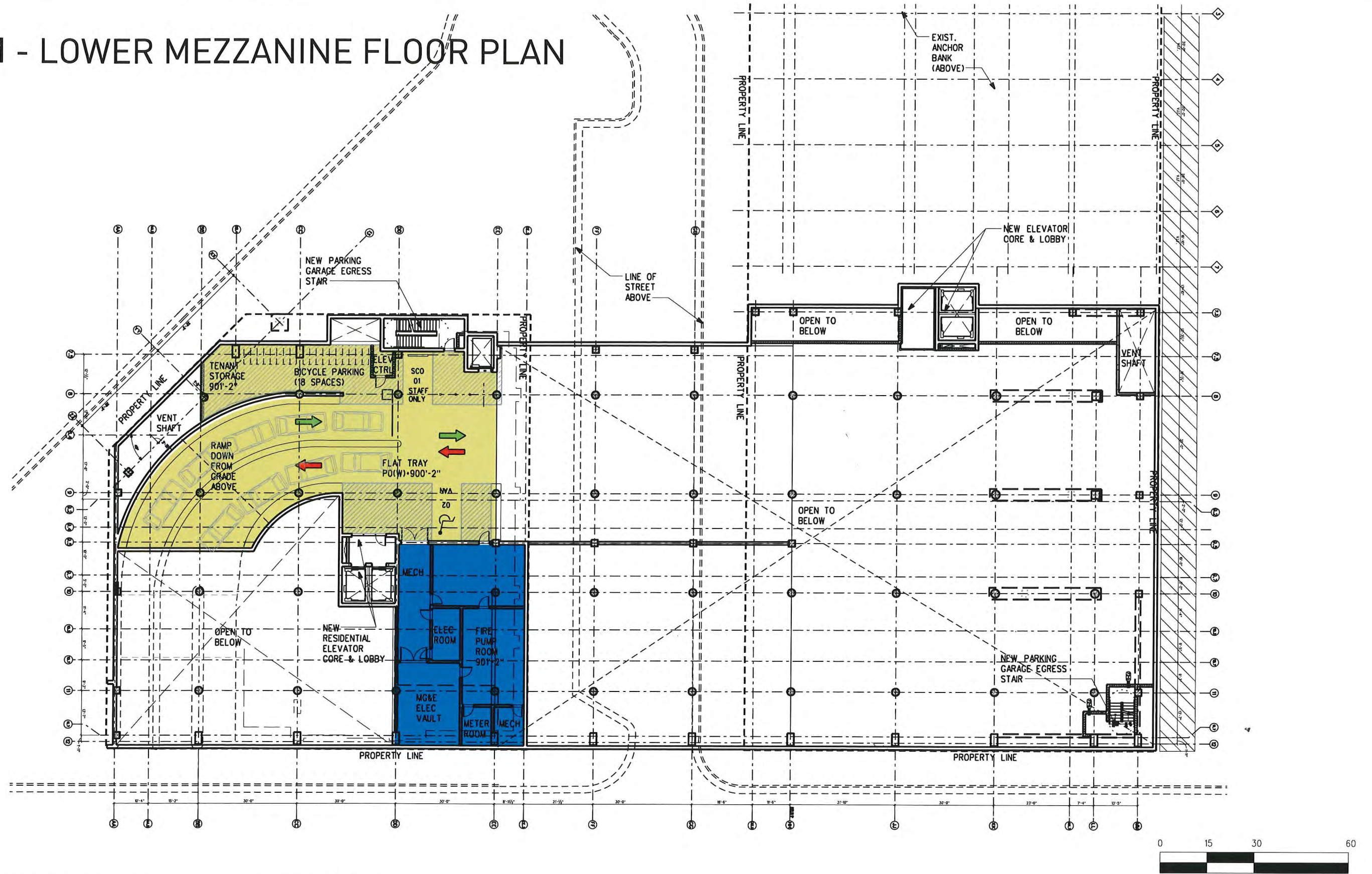


# LEVEL LM - LOWER MEZZANINE FLOOR PLAN



**PREVIOUSLY APPROVED - FOR REFERENCE ONLY**  
**ANCHOR PROPERTIES REDEVELOPMENT**

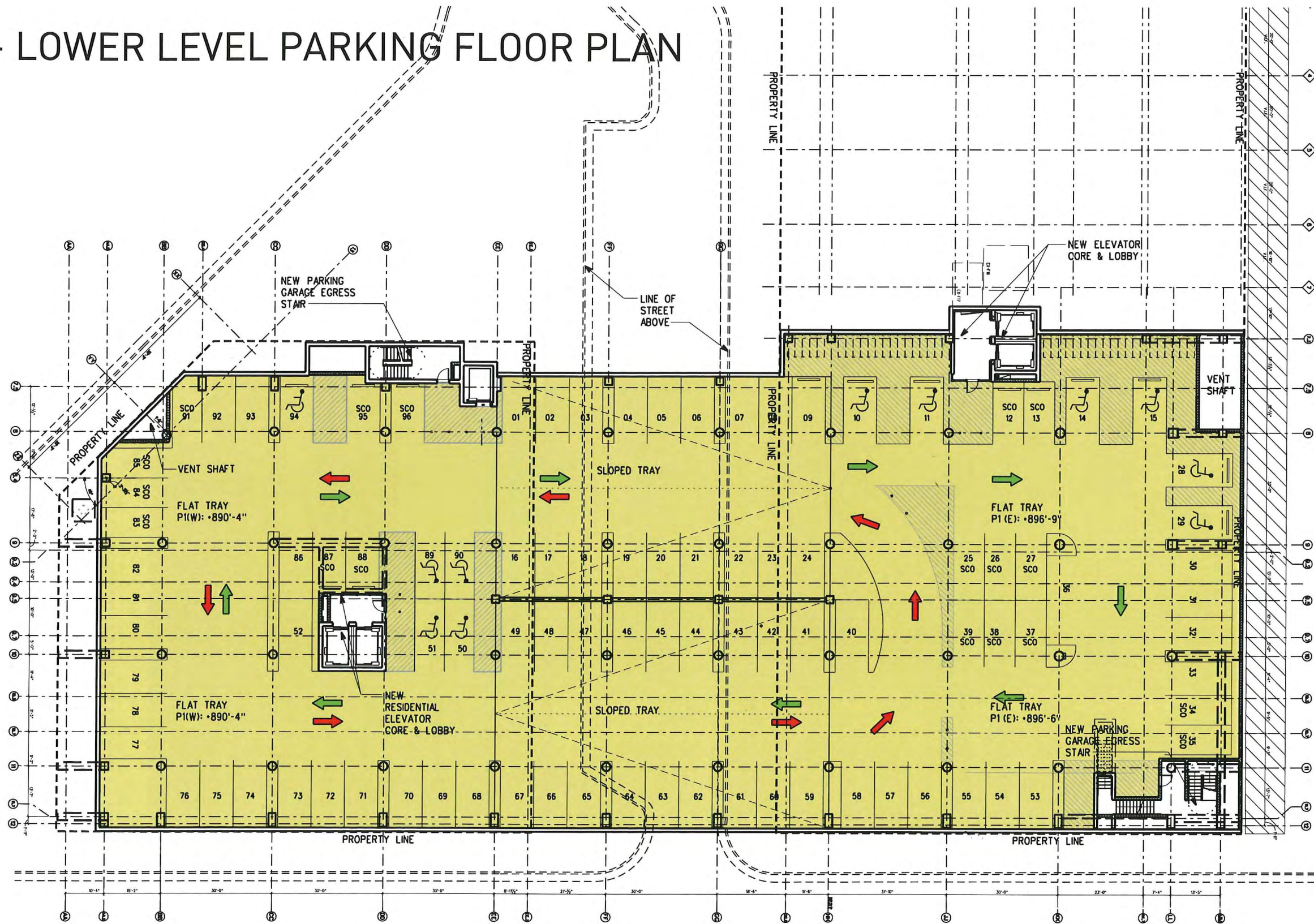
MARCH 4, 2015



Urban Land Interests



# LEVEL P1 - LOWER LEVEL PARKING FLOOR PLAN



**PREVIOUSLY APPROVED - FOR REFERENCE ONLY**  
**ANCHOR PROPERTIES REDEVELOPMENT**

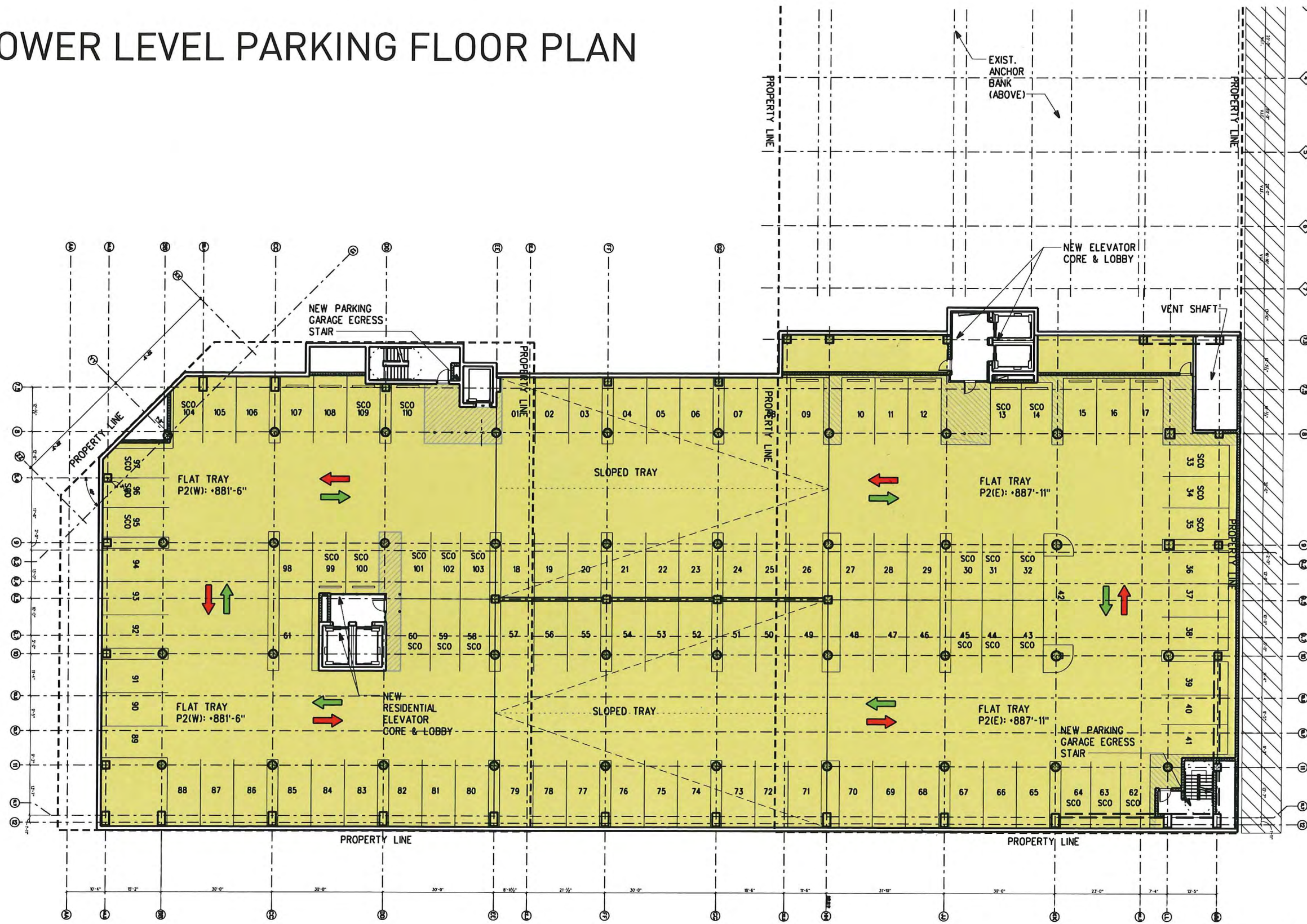
MARCH 4, 2015



Urban Land Interests



# LEVEL P2 - LOWER LEVEL PARKING FLOOR PLAN



**PREVIOUSLY APPROVED - FOR REFERENCE ONLY**  
**ANCHOR PROPERTIES REDEVELOPMENT**

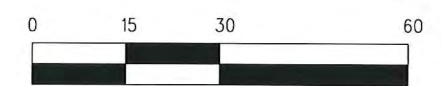
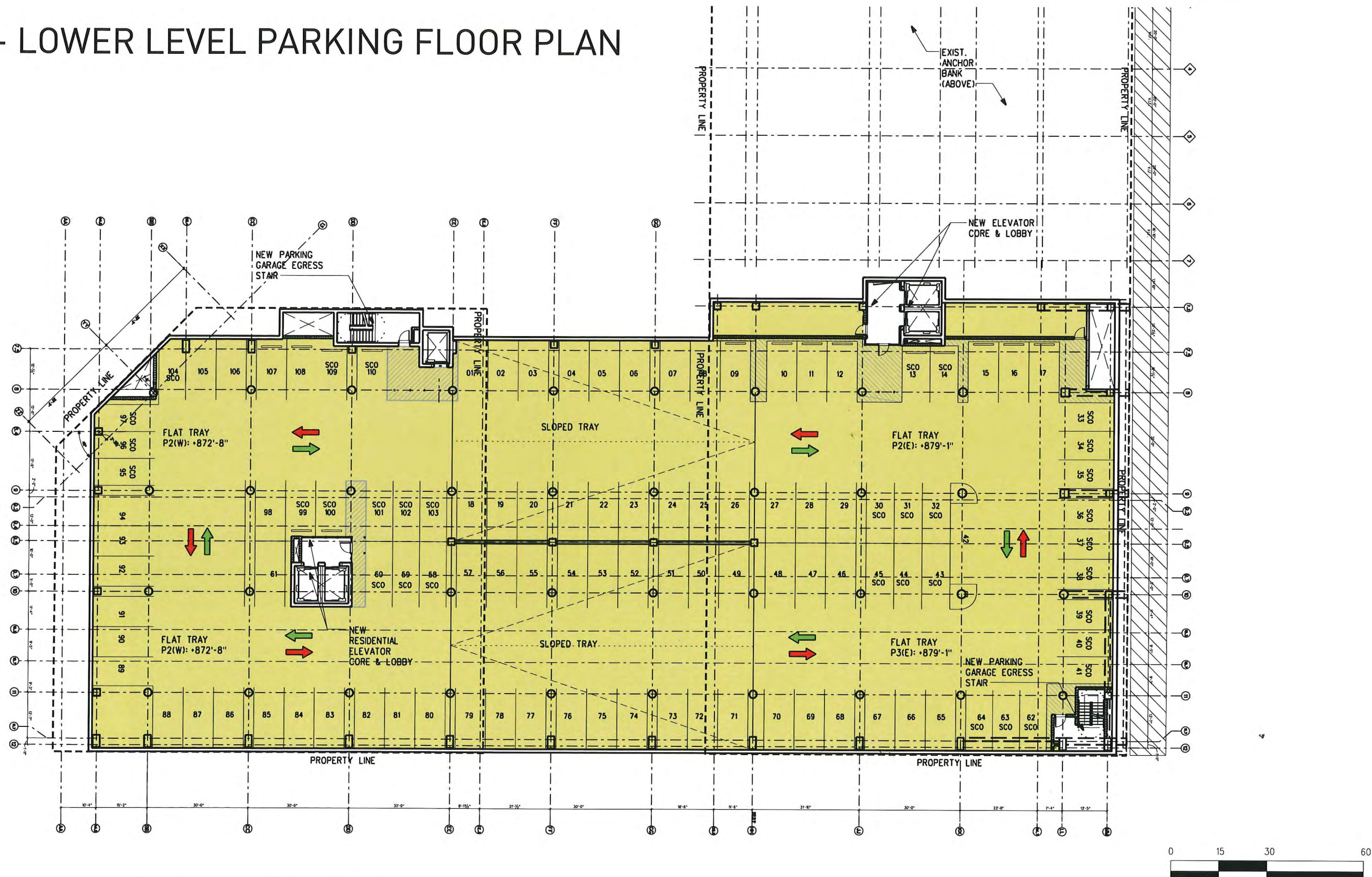
MARCH 4, 2015



Urban Land Interests



# LEVEL P3 - LOWER LEVEL PARKING FLOOR PLAN



**PREVIOUSLY APPROVED - FOR REFERENCE ONLY**  
**ANCHOR PROPERTIES REDEVELOPMENT**

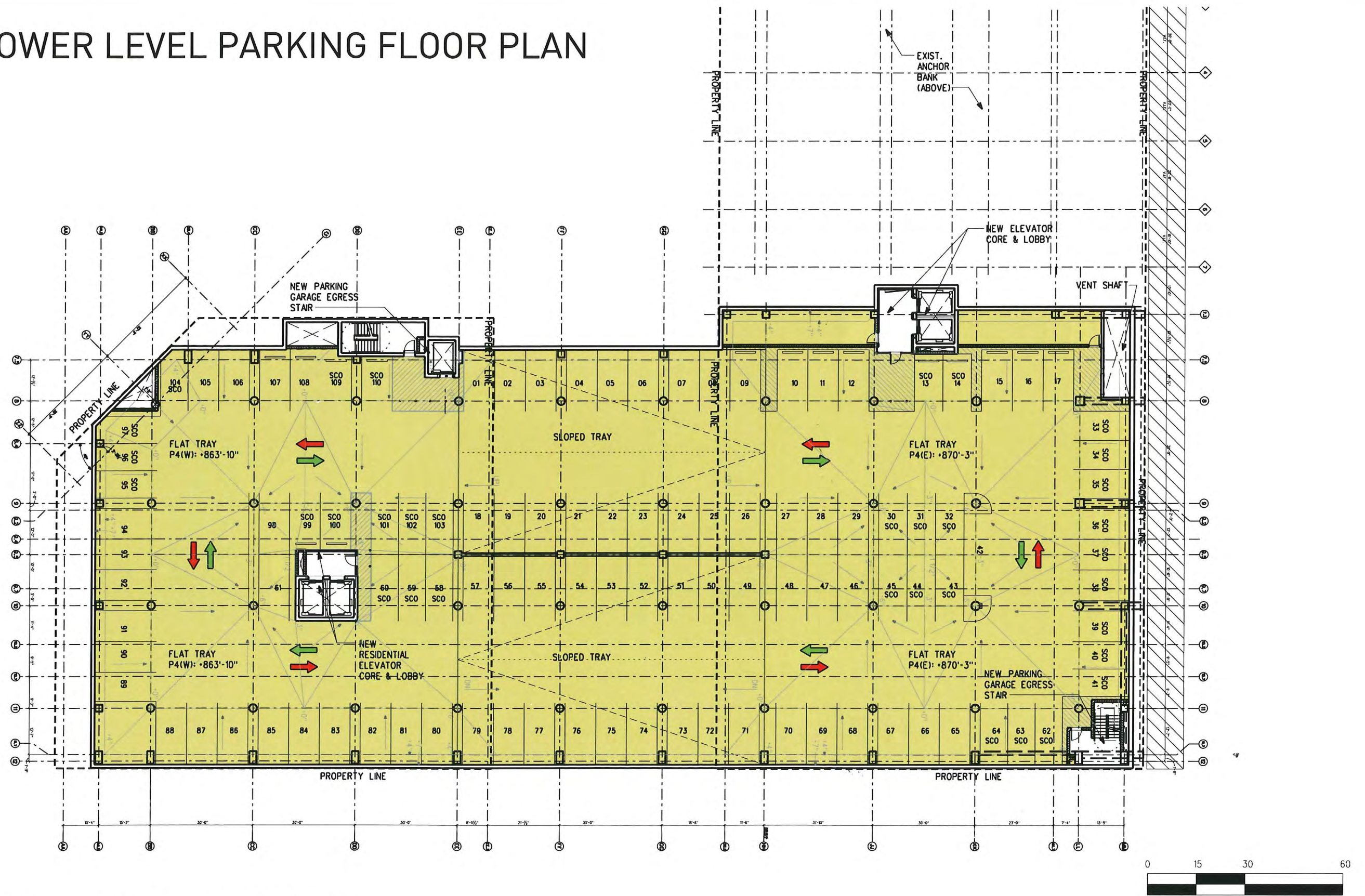
MARCH 4, 2015



Urban Land Interests



# LEVEL P4 - LOWER LEVEL PARKING FLOOR PLAN



**PREVIOUSLY APPROVED - FOR REFERENCE ONLY**  
**ANCHOR PROPERTIES REDEVELOPMENT**

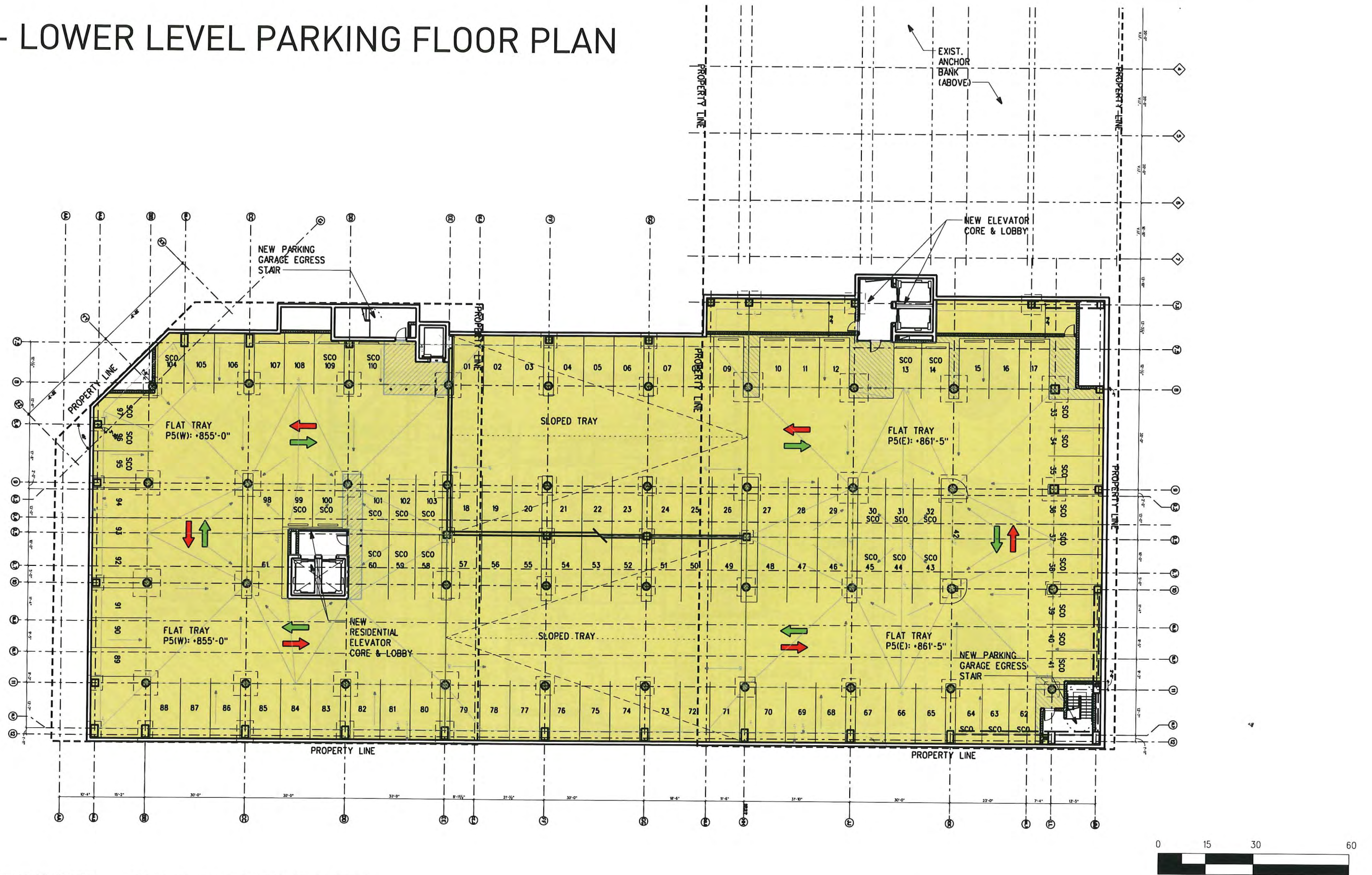
MARCH 4, 2015



Urban Land Interests



# LEVEL P5 - LOWER LEVEL PARKING FLOOR PLAN



**PREVIOUSLY APPROVED - FOR REFERENCE ONLY**  
**ANCHOR PROPERTIES REDEVELOPMENT**

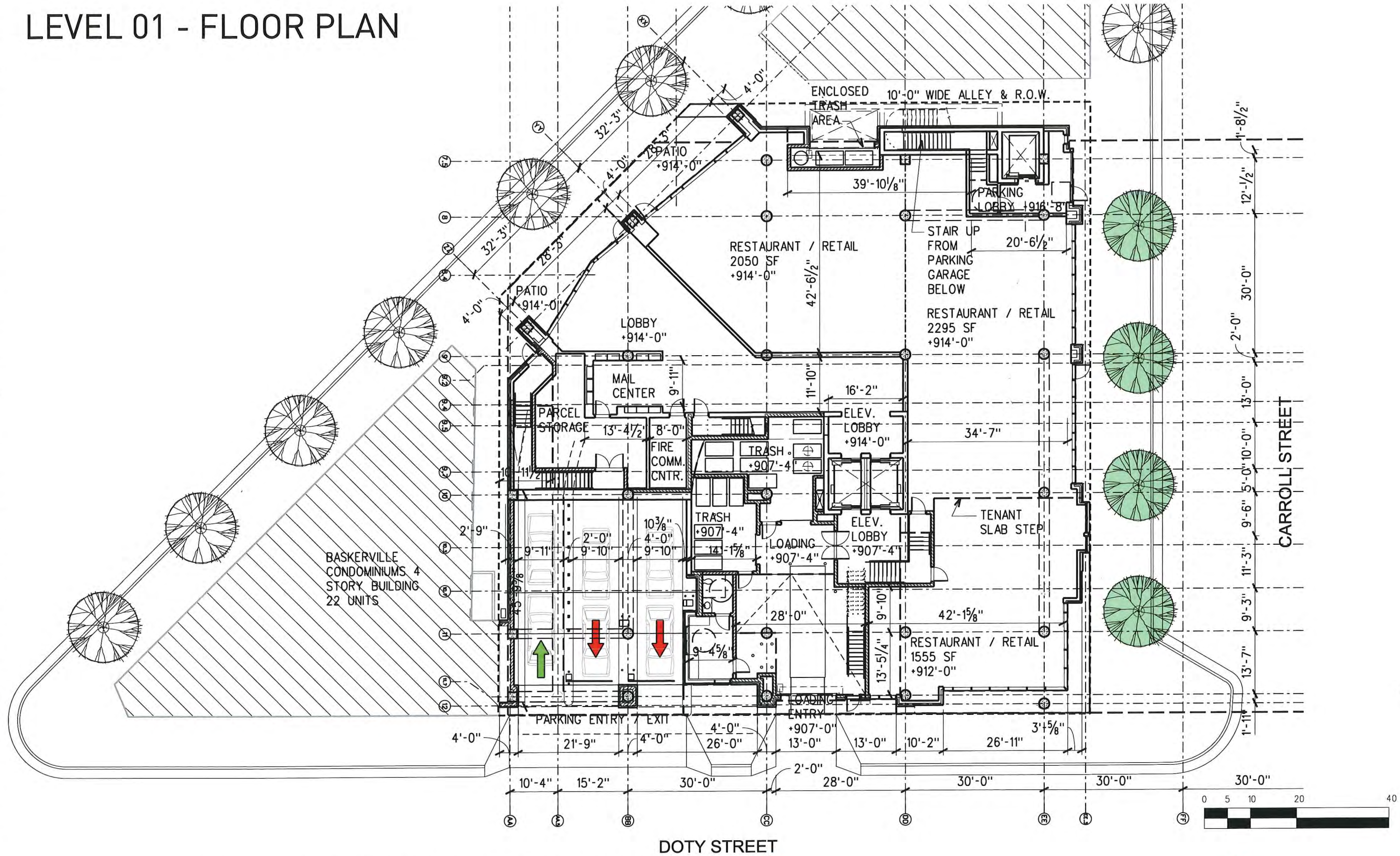
MARCH 4, 2015



Urban Land Interests



# LEVEL 01 - FLOOR PLAN



## ANCHOR PROPERTIES REDEVELOPMENT

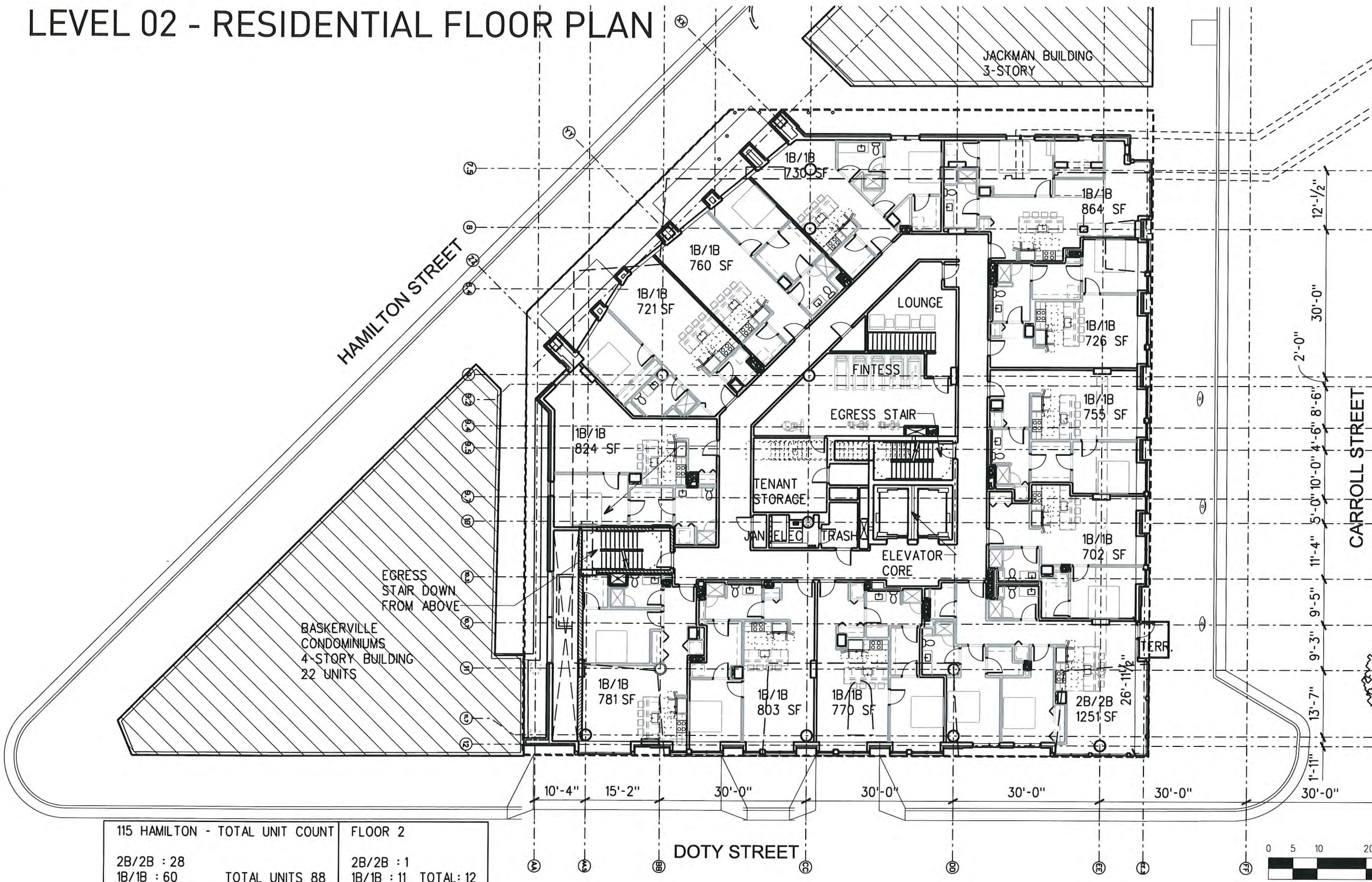
MARCH 4, 2015



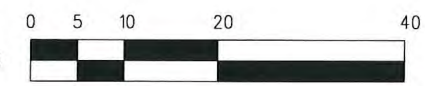
Urban Land Interests



# LEVEL 02 - RESIDENTIAL FLOOR PLAN



115 HAMILTON - TOTAL UNIT COUNT		FLOOR 2	
2B/2B : 28		2B/2B : 1	
1B/1B : 60	TOTAL UNITS 88	1B/1B : 11	TOTAL: 12



## ANCHOR PROPERTIES REDEVELOPMENT

MARCH 4, 2015

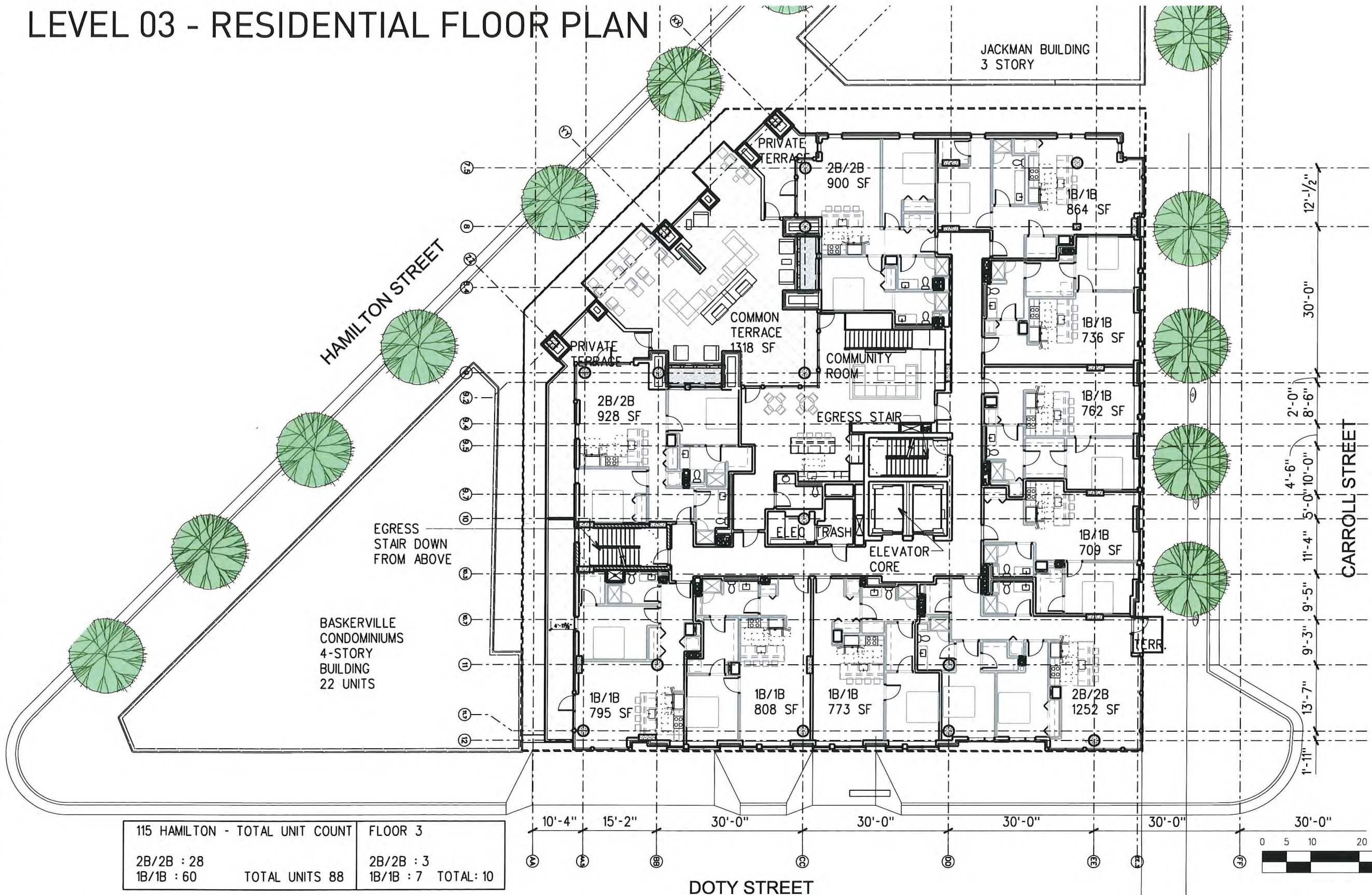


Urban Land Interests





# LEVEL 03 - RESIDENTIAL FLOOR PLAN



115 HAMILTON - TOTAL UNIT COUNT	FLOOR 3
2B/2B : 28	2B/2B : 3
1B/1B : 60	1B/1B : 7
TOTAL UNITS 88	TOTAL: 10

## ANCHOR PROPERTIES REDEVELOPMENT

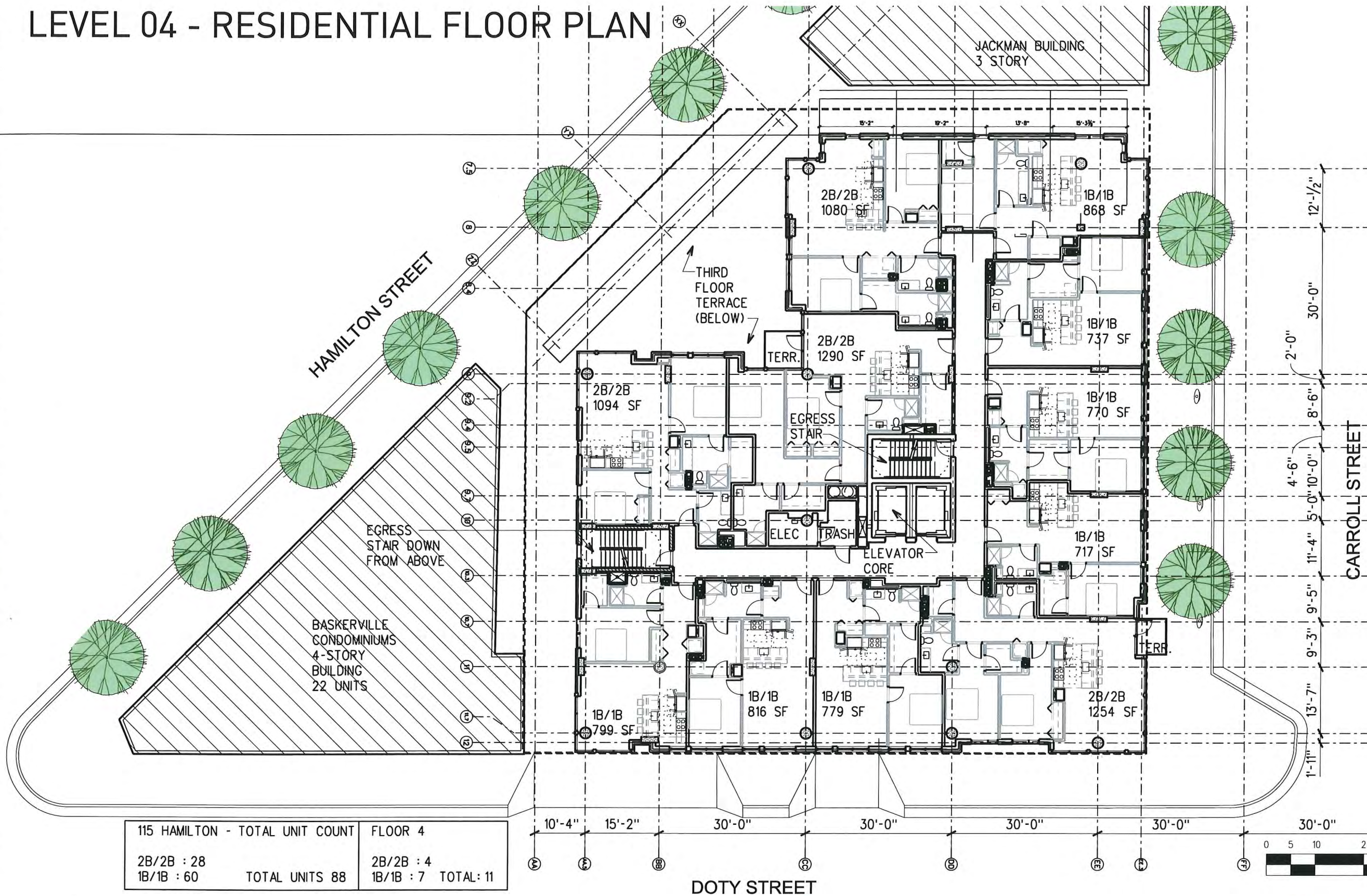
MARCH 4, 2015



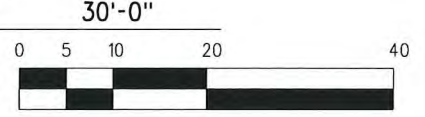
Urban Land Interests



# LEVEL 04 - RESIDENTIAL FLOOR PLAN



115 HAMILTON - TOTAL UNIT COUNT	FLOOR 4
2B/2B : 28	2B/2B : 4
1B/1B : 60	1B/1B : 7
TOTAL UNITS 88	TOTAL: 11



## ANCHOR PROPERTIES REDEVELOPMENT

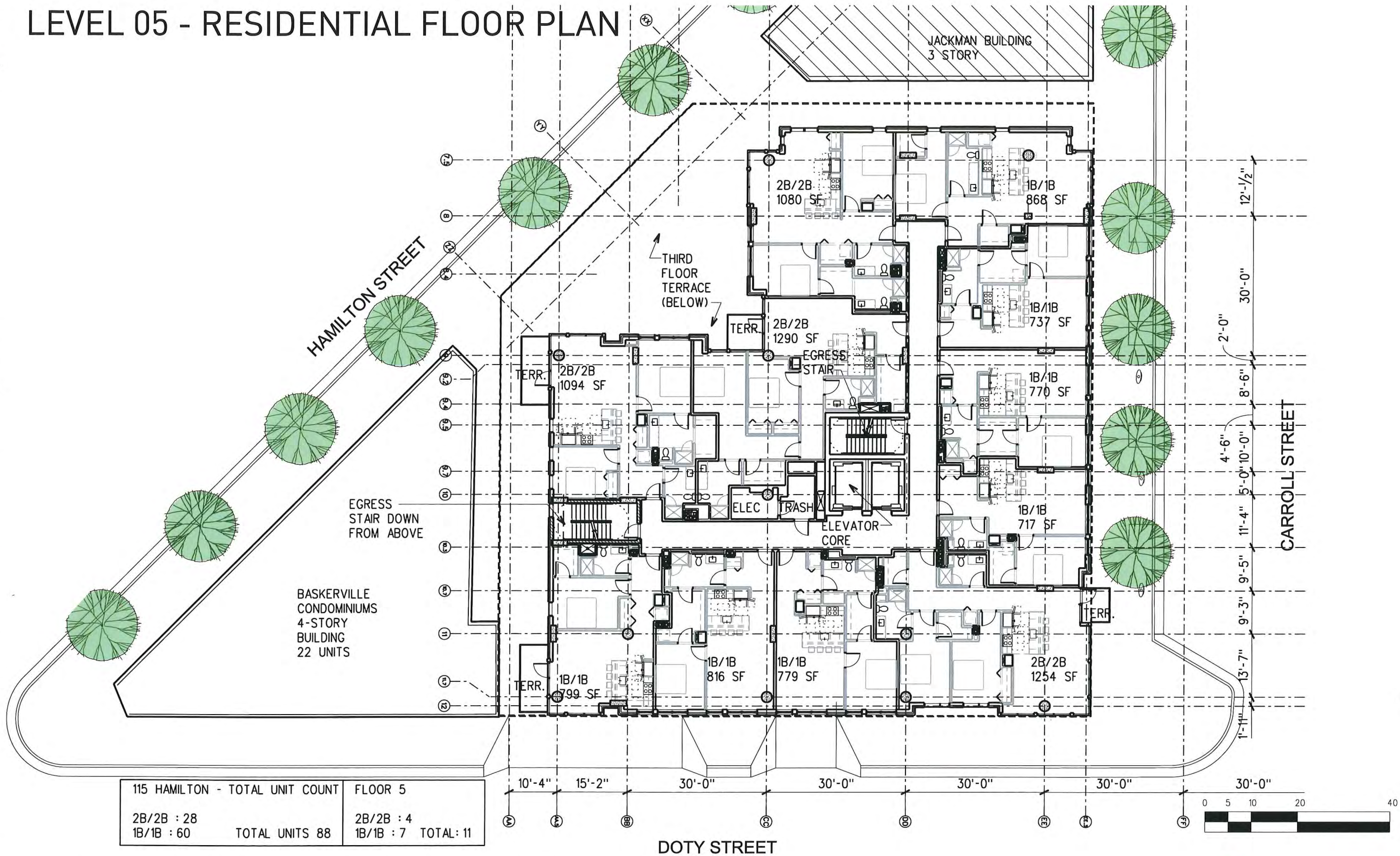
MARCH 4, 2015



Urban Land Interests



# LEVEL 05 - RESIDENTIAL FLOOR PLAN



## ANCHOR PROPERTIES REDEVELOPMENT

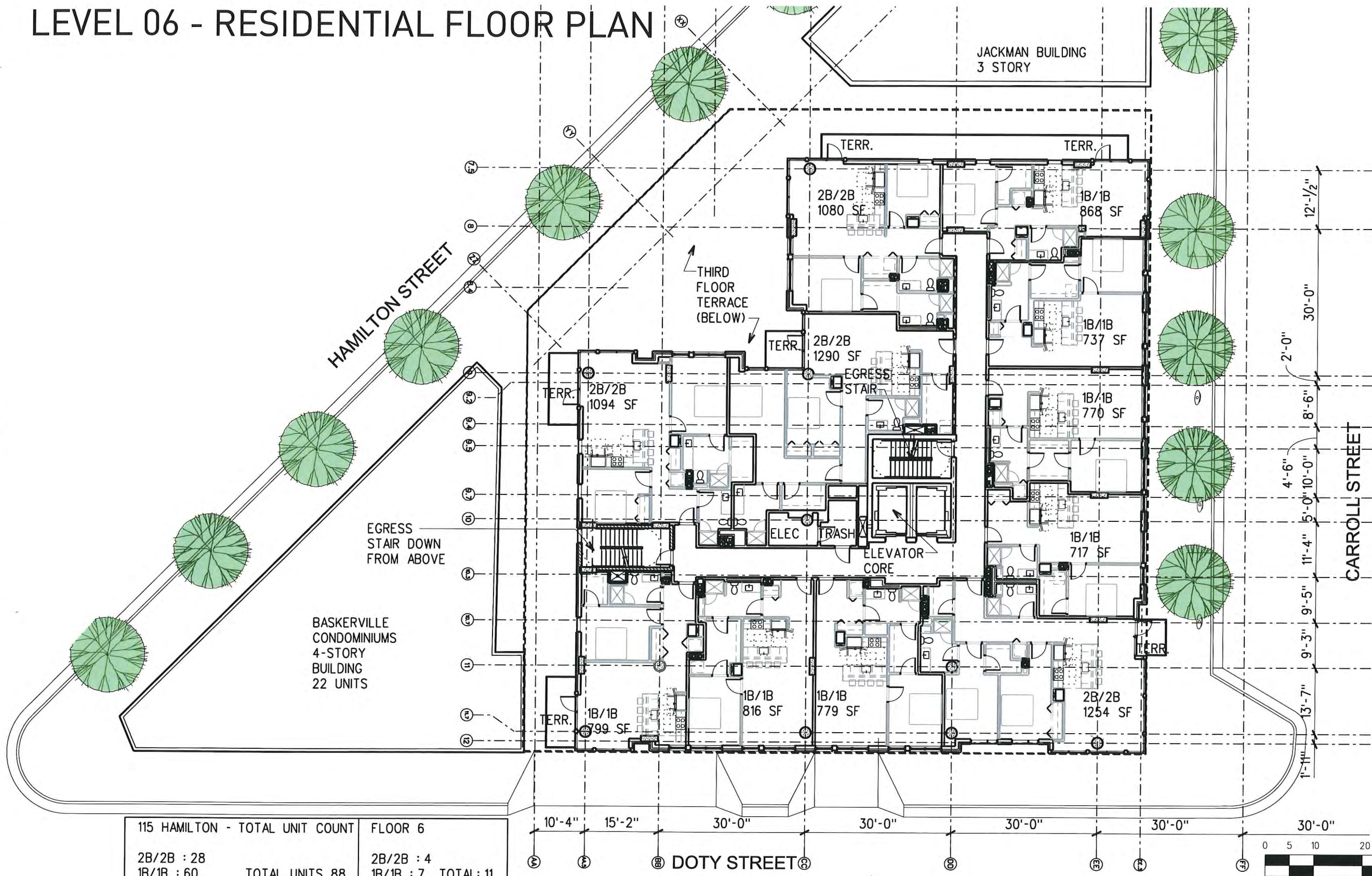
MARCH 4, 2015



Urban Land Interests



# LEVEL 06 - RESIDENTIAL FLOOR PLAN



115 HAMILTON - TOTAL UNIT COUNT		FLOOR 6	
2B/2B : 28		2B/2B : 4	
1B/1B : 60	TOTAL UNITS 88	1B/1B : 7	TOTAL: 11



## ANCHOR PROPERTIES REDEVELOPMENT

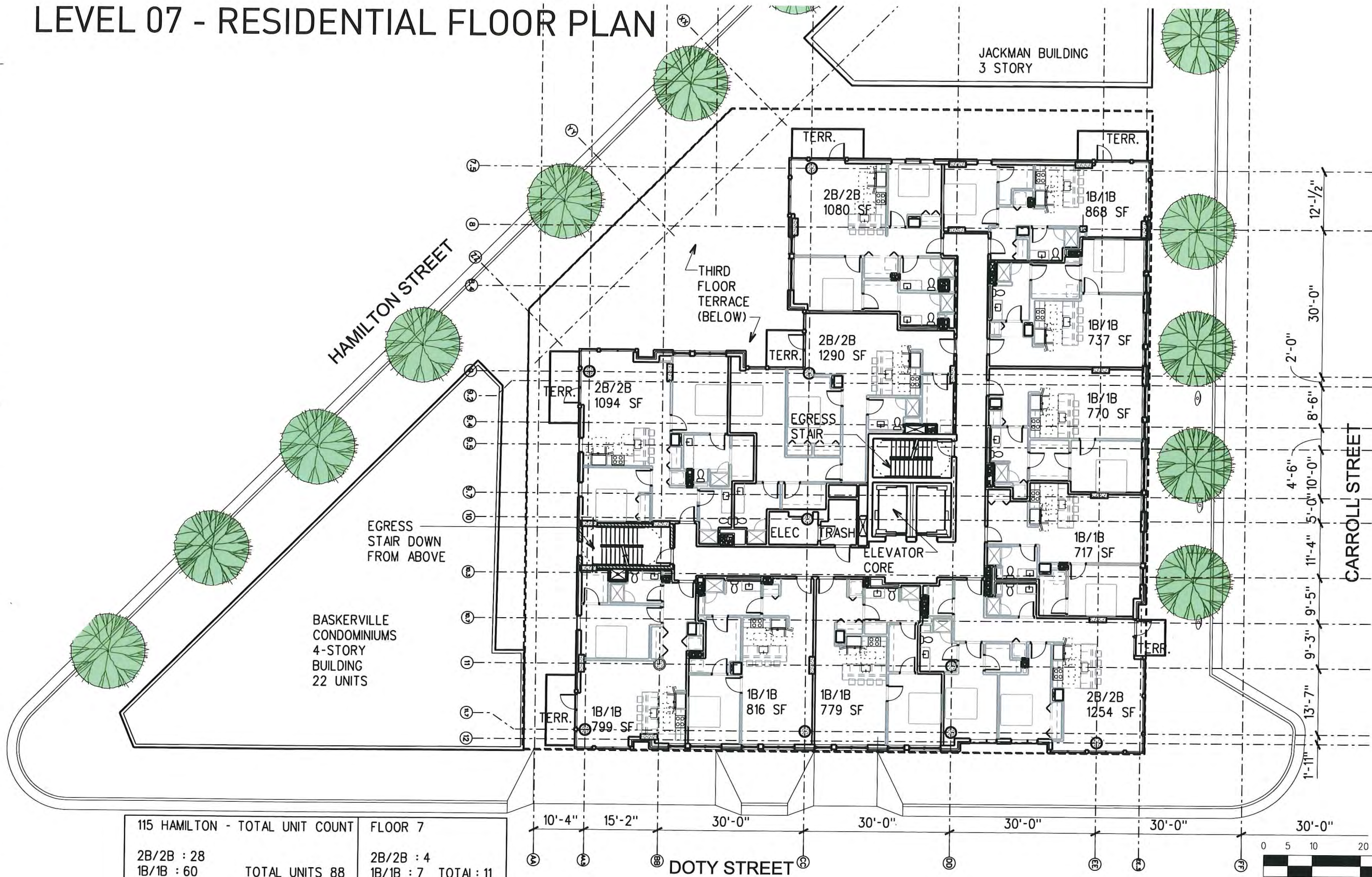
MARCH 4, 2015



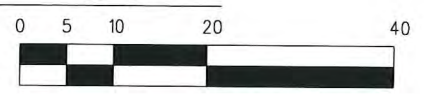
Urban Land Interests



# LEVEL 07 - RESIDENTIAL FLOOR PLAN



115 HAMILTON - TOTAL UNIT COUNT		FLOOR 7	
2B/2B : 28		2B/2B : 4	
1B/1B : 60	TOTAL UNITS 88	1B/1B : 7	TOTAL: 11



## ANCHOR PROPERTIES REDEVELOPMENT

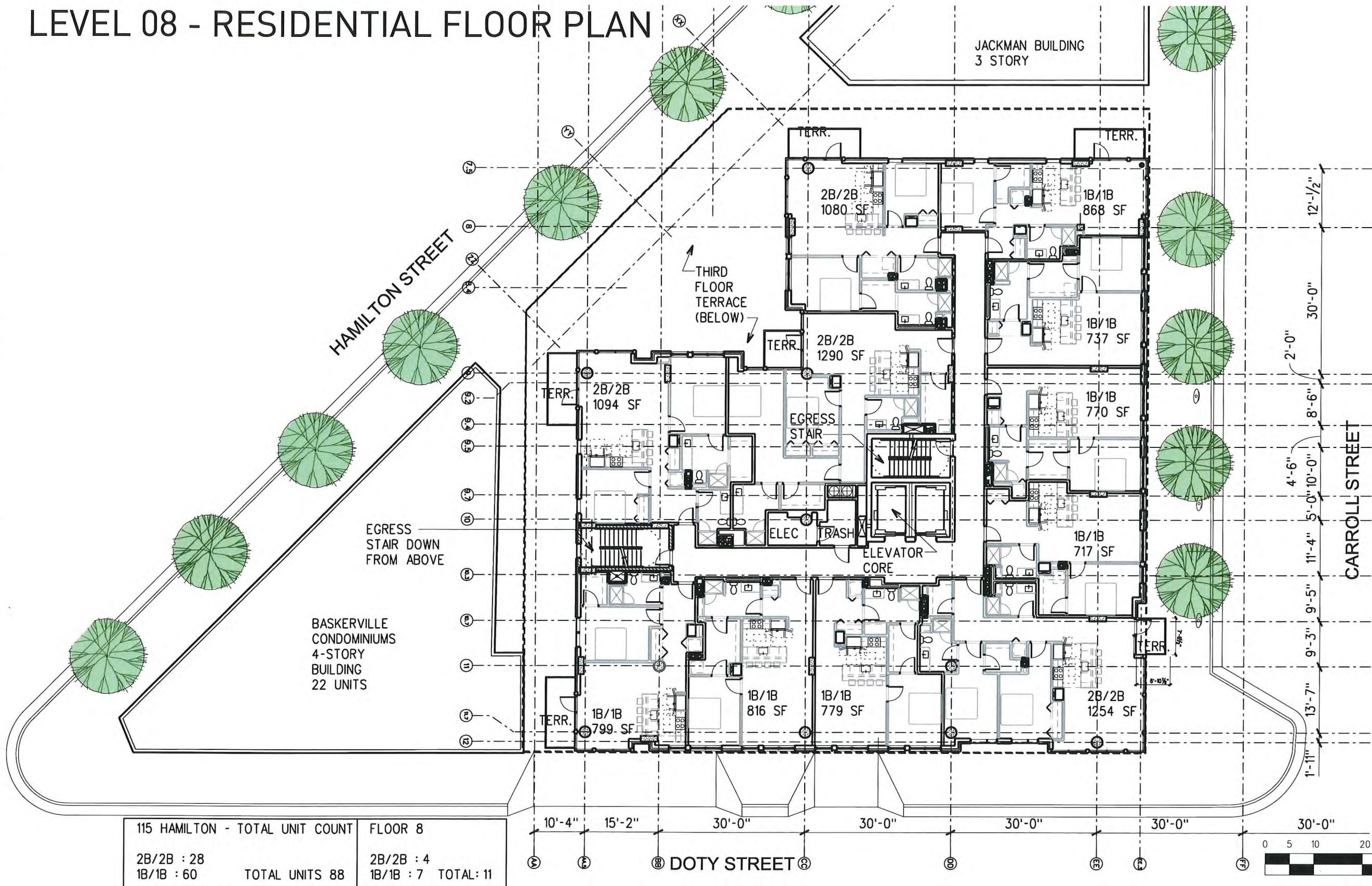
MARCH 4, 2015



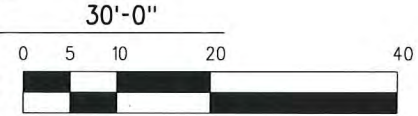
Urban Land Interests



# LEVEL 08 - RESIDENTIAL FLOOR PLAN



115 HAMILTON - TOTAL UNIT COUNT		FLOOR 8	
2B/2B : 28		2B/2B : 4	
1B/1B : 60	TOTAL UNITS 88	1B/1B : 7	TOTAL: 11



ANCHOR PROPERTIES REDEVELOPMENT

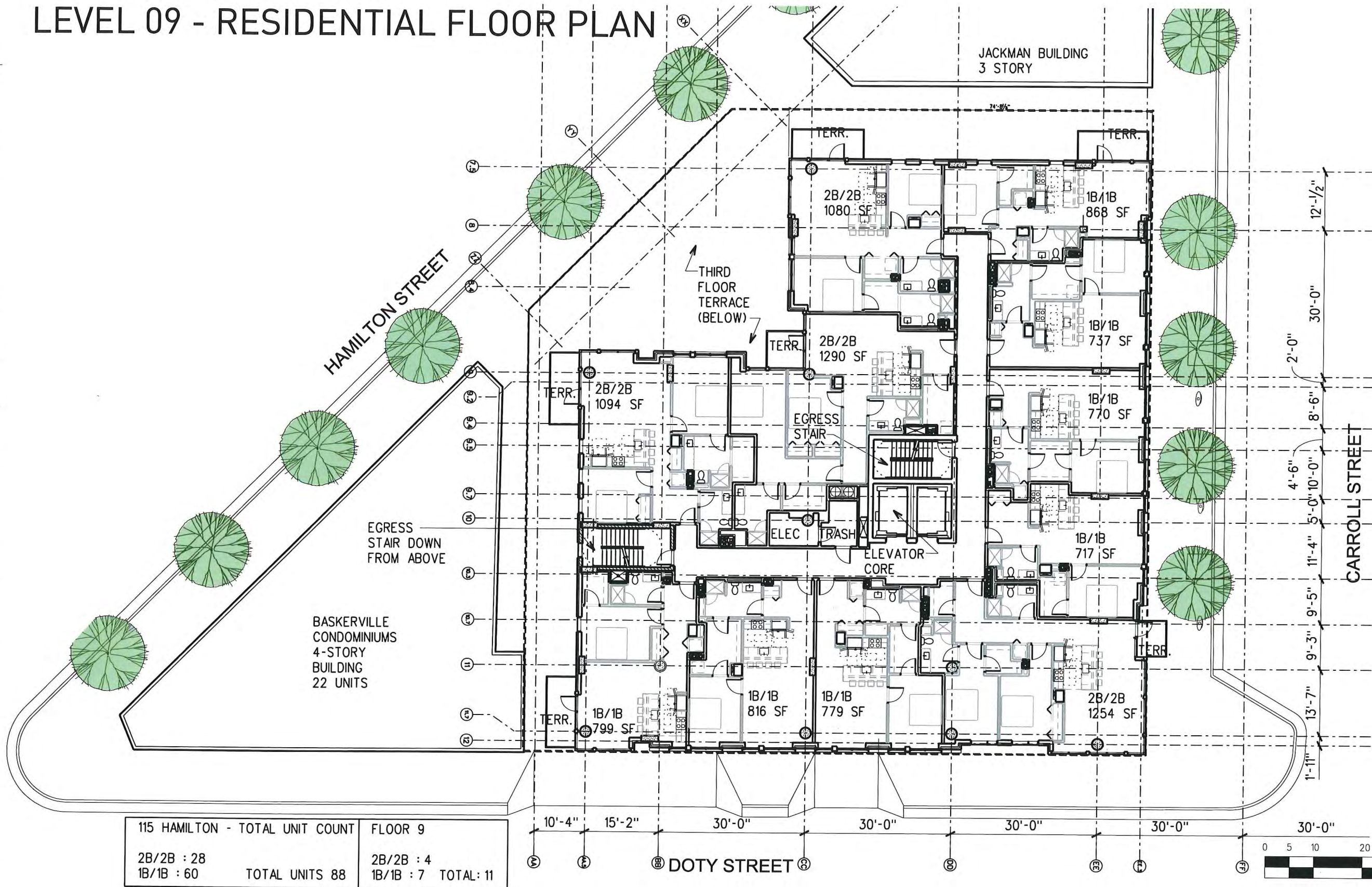
MARCH 4, 2015



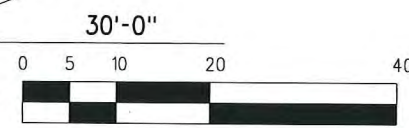
Urban Land Interests



# LEVEL 09 - RESIDENTIAL FLOOR PLAN



115 HAMILTON - TOTAL UNIT COUNT		FLOOR 9	
2B/2B : 28		2B/2B : 4	
1B/1B : 60	TOTAL UNITS 88	1B/1B : 7	TOTAL: 11



ANCHOR PROPERTIES REDEVELOPMENT

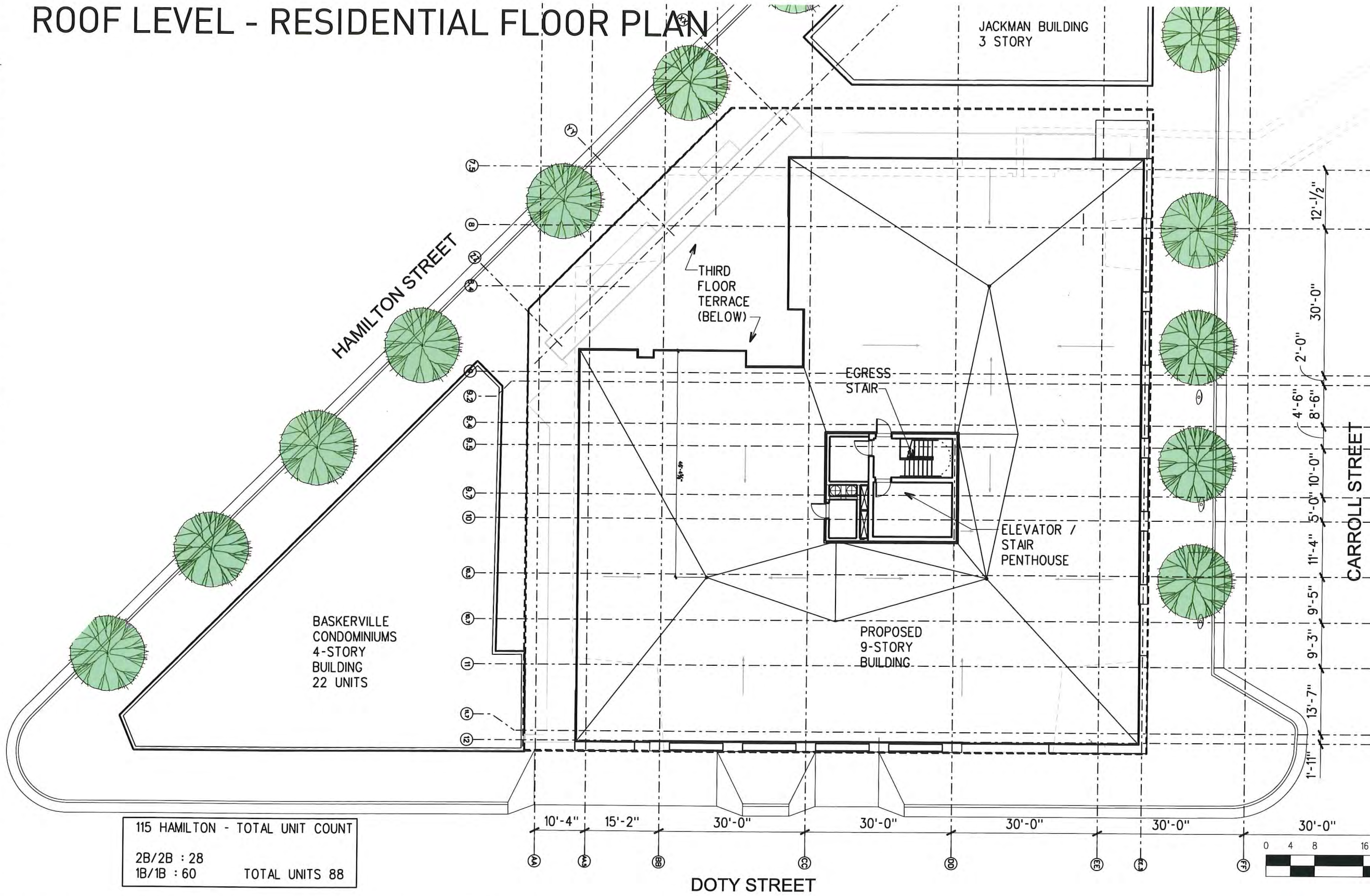
MARCH 4, 2015



Urban Land Interests



# ROOF LEVEL - RESIDENTIAL FLOOR PLAN



115 HAMILTON - TOTAL UNIT COUNT	
2B/2B : 28	TOTAL UNITS 88
1B/1B : 60	

ANCHOR BANK - PROPERTY DEVELOPMENT

MARCH 4, 2015



Urban Land Interests





# RENDERING



CORNER OF DOTY AND CARROLL



FACING SOUTH ON CARROLL

ANCHOR BANK - PROPERTY DEVELOPMENT

MARCH 4, 2015



Urban Land Interests



# RENDERING



HAMILTON STREET



FACING EAST ON DOTY



ANCHOR BANK - PROPERTY DEVELOPMENT

MARCH 4, 2015



Urban Land Interests

