

# HILL VALLEY MULTIFAMILY - PHASE 1

DEVELOPMENT MASTERPLAN - PARCEL B (LOTS 204 & 205)

## CUP SUBMITTAL

ISSUE DATE - MARCH 02, 2026

## SHEET INDEX

### GENERAL

A-00 TITLE SHEET AND PROJECT INFORMATION

### CIVIL / LANDSCAPE

C001 PRE-EXISTING CONDITIONS PLAN  
 C002 POST-EXISTING CONDITIONS PLAN  
 C100 SITE LAYOUT PLAN  
 C200 SITE GRADING PLAN  
 C300 SITE EROSION CONTROL PLAN  
 C400 EROSION CONTROL DETAILS  
 C500 SITE UTILITY PLAN  
 C600 FIRE ACCESS PLAN  
 C700 CONSTRUCTION DETAILS  
 L100 LANDSCAPE PLAN  
 L101 LANDSCAPE NOTES & DETAILS  
 L102 LANDSCAPE PLAN  
 L103 LANDSCAPE PLAN  
 L104 LANDSCAPE PLAN  
 L105 LANDSCAPE PLAN  
 L106 LANDSCAPE PLAN  
 L107 LANDSCAPE PLAN

### ARCHITECTURAL

A-01 DEVELOPMENT SITE PLAN  
 A-02 OVERALL SITE PLAN  
 A-03 LEVEL S0 OVERALL FLOOR PLAN  
 A-04 LEVEL B1 OVERALL FLOOR PLAN  
 A-05 LEVEL D1 OVERALL FLOOR PLAN  
 A-06 LEVEL S0 OVERALL FLOOR PLAN  
 A-07 LEVEL S0 OVERALL FLOOR PLAN  
 A-08 LEVEL S0 OVERALL FLOOR PLAN  
 A-09 LEVEL S0 OVERALL FLOOR PLAN  
 A-10 OVERALL FLOOR PLAN  
 A-11 ENLARGED BIKE PARKING PLAN  
 A-12 ELEVATIONS  
 A-13 ELEVATIONS  
 A-14 ELEVATIONS  
 A-15 ELEVATIONS  
 A-16 ELEVATIONS  
 A-17 ELEVATIONS & W  
 A-18 ELEVATIONS & W  
 A-19 ELEVATIONS & W  
 A-20 ELEVATIONS & W  
 A-21 ELEVATIONS & W  
 A-22 DIGITAL MATERIAL BOARD  
 A-23 CONCEPTUAL RENDER  
 A-24 CONCEPTUAL RENDER  
 A-25 CONCEPTUAL RENDER  
 A-26 CONCEPTUAL RENDER  
 A-27 CONCEPTUAL RENDER

### PHOTOMETRICS

SITE LIGHTING  
 SITE LIGHTING TYPES

### PRODUCT CUT SHEETS

SURFACE STALL BIKE RACK  
 STRUCTURED BIKE RACK



CONCEPTUAL RENDERING



PROJECT LOCATION MAP

△ Revisions

CUP SUBMITTAL

HILL VALLEY  
 MULTIFAMILY -  
 PHASE 1

DEVELOPMENT MASTERPLAN -  
 PARCEL B (LOTS 204 & 205)  
 Date Issued: 03/02/2026  
 RINKA project #: 25060  
 Sheet Title

TITLE SHEET AND  
 PROJECT  
 INFORMATION

Sheet #

A-00

NOT FOR CONSTRUCTION



**LEGEND:**

- FOUND 3/4" REBAR
- FOUND 1" PIPE
- PLACED 3/4"x18" REBAR
- PLACED 1/2"x18" REBAR
- PLACED 3/4"x18" CONCRETE
- ▲ PLACED 3/4" BAIL
- SS SANITARY SEWER
- ST STORM SEWER
- G GAS MAIN
- E UNDERGROUND ELECTRIC
- FO FIBER OPTIC LINE
- CUP AND GUTTER
- CONCRETE
- EXISTING CONTOUR LINE
- LIGHT POLE
- POWER POLE
- SANITARY MANHOLE
- STORM SEWER CATCH BASIN
- STORM SEWER INLET
- VALVE
- HYDRANT
- MONITORING WELL
- SIGN
- RECORDED AS INFORMATION

△ Revisions

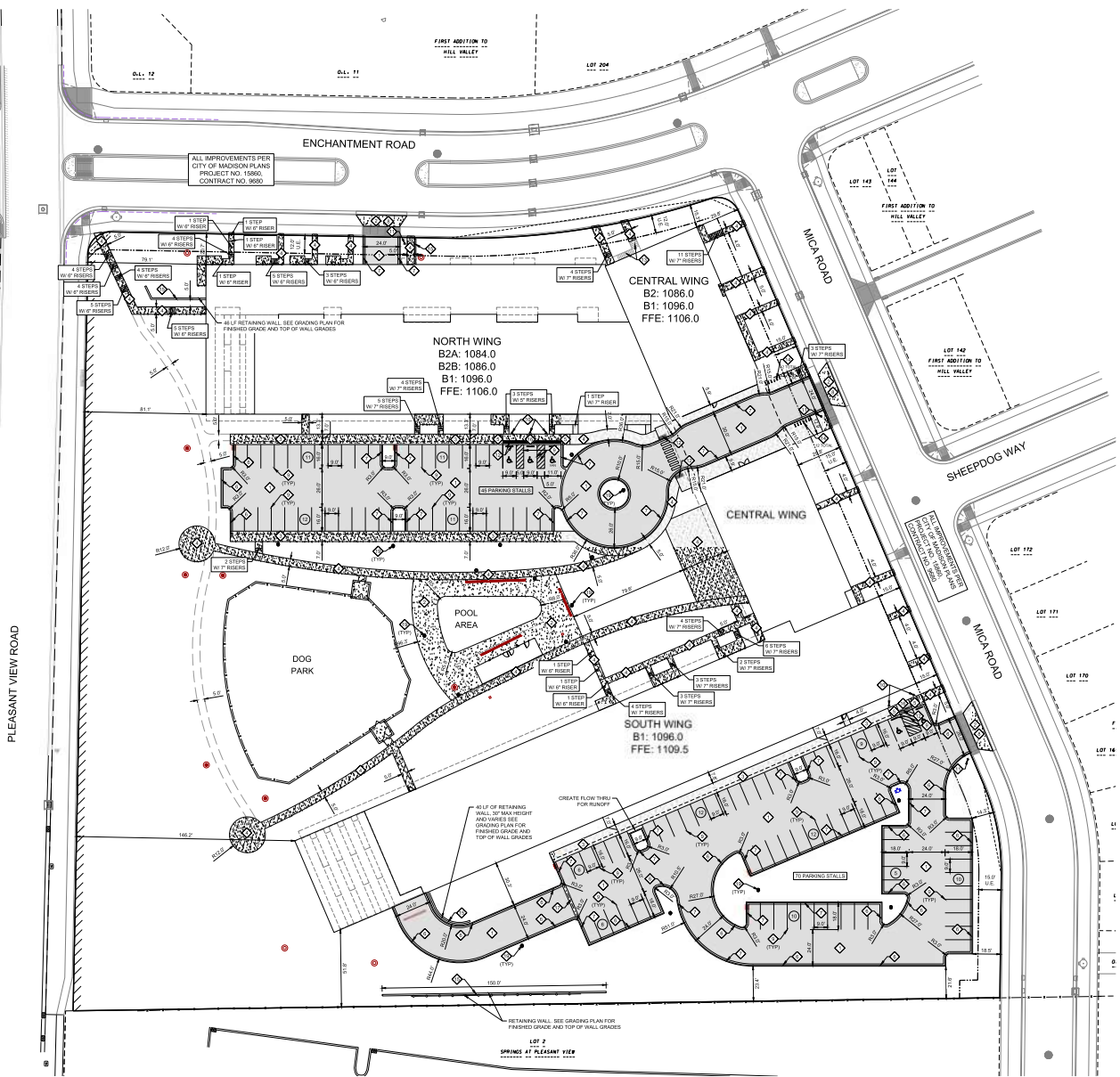
CUP SUBMITTAL  
 HILL VALLEY  
 MULTIFAMILY -  
 PHASE 1

Date Issued: 03/02/26  
 RINKA project #: 25000  
 Sheet Title  
 PRE-EXISTING  
 CONDITIONS  
 PLAN



NOT FOR CONSTRUCTION





- SITE PLAN NOTES:**
- SEE GRADING PLAN TO DETERMINE LOCATIONS OF HOLDING OR REJECT CURBS.
  - PROVIDE CONTROL JOINTS 10' TO 14' O.C. PROVIDE EXPANSION JOINTS 30' O.C.
  - CONTRACTOR TO REMOVE AND BRUSH 12" BEHIND BACK OF CURB TO PROVIDE COMPACTED LEVEL BASE FOR CURBS AND GUTTERS.
  - CONTRACTOR TO OVER EXCAVATE/LEAN OUT ALL LANDSCAPE AREAS TO ALLOW FOR THE PLACEMENT OF 12" OF BLACK DIRT/SOIL.
  - CONTRACTOR TO REMOVE ALL EXCESS STONE BEHIND BACK OF CURBS IN LANDSCAPE ISLANDS. THIS APPLIES TO EXCESS STONE BEYOND 12" AT BACK OF CURB.
  - CONTRACTOR SHALL PROVIDE FLUSH ASPHALT PAVING TO CONCRETE CURB IF SURFACE COURSE IS RAISED AFTER PAVING. PAVING CONTRACTOR SHALL HEAT UP, REMOVE AND COMPACT EXCESS PAVEMENT.
  - IF ANY SINKING, DISPERMINANCE, OR DIMENSIONS WITHIN ARE BECOME APPARENT, IT SHALL BE BROUGHT TO THE ATTENTION OF THE ENGINEER PRIOR TO CONSTRUCTION.
  - ALL DIMENSIONS TO FACE OF CURB UNLESS OTHERWISE NOTED.
  - ALL WORK SHALL BE PER THE CITY OF MADISON STANDARD SPECIFICATIONS.
  - CONTRACTOR IS RESPONSIBLE TO OBTAIN ANY AND ALL PERMITS REQUIRED.
  - THE FRONT OF WAY IS THE SOLE JURISDICTION OF THE CITY OF MADISON AND IS SUBJECT TO CHANGE AT ANYTIME PER THE RECOMMENDATIONS AND/OR TRAFFIC ENGINEERING AND CITY ENGINEERING DEPARTMENTS.
  - ALL WORK IN THE PUBLIC RIGHT-OF-WAY SHALL BE PERFORMED BY A CITY LICENSED CONTRACTOR.

- PROPOSED IMPROVEMENTS LEGEND**
- LIGHT DUTY PAVEMENT 3" ASPHALT 1.5" SANDER, 1.5" SURFACE 4" UPPER BASE COURSE, 4" CURB & GUTTER 2" LOWER BASE COURSE (TO BE FINALIZED WITH GEOTECHNICAL REPORT)
  - CONCRETE SIDEWALK 4" CONCRETE OVER 4" GRANULAR BASE (TO BE FINALIZED WITH GEOTECHNICAL REPORT)
  - CONCRETE PAVEMENT 4" CONCRETE WITH MESH REINFORCEMENT 4" CRUSHED AGGREGATE BASE COURSE (TO BE FINALIZED WITH GEOTECHNICAL REPORT)
  - PARKING STALL COUNTS

- KEYNOTES**
- NEW BITUMINOUS PAVEMENT: SEE DETAIL SHT C700
  - NEW CONCRETE PAVEMENT: SEE DETAIL SHT C700
  - NEW THICKENED EDGE SIDEWALK: SEE DETAIL SHT C700. SEE GRADING PLAN FOR CURB HEIGHT & SPOT ELEVATIONS.
  - NEW CONCRETE SIDEWALK: SEE DETAIL SHT C700. SEE GRADING PLAN FOR CURB HEIGHT & SPOT ELEVATIONS.
  - NEW ADA CURB RAMP: SEE DETAIL SHT C700
  - BRANCH CURB & GUTTER (TYPE D - ACCEPTING PAV): SEE DETAIL SHT C700
  - BRANCH CURB & GUTTER (TYPE D - REJECTING PAV): SEE DETAIL SHT C700
  - NEW DRIVEWAY PER CITY OF MADISON STANDARDS & TOLERANCES
  - NEW 4" PAINT STRIPS, TYP.
  - NEW BARRIER FREE PARKING STALL SIGNAGE: SEE DETAIL SHT C700
  - STOP SIGN MIN. 30"X24" SEE DETAIL S2000. ALL DIRECTIONAL SIGNAGE SHALL CONFORM TO PROVISIONS OF STANDARDS. SEE DETAIL SHT C700.
  - NEW TRIANGULATED CORNER DETECTABLE WARNING STRIP AND CURB STOP: SEE DETAIL SHT C700
  - STRUCTURAL STAIRS: SEE ARCH PLANS
  - NEW BINE RACK: SEE DETAIL SHT C700
  - NEW RETAINING WALL: SEE GRADING SHEET TOP OF WALL AND F0 ELEVATIONS.
  - FLUSH ADA ZONE, TYP.
  - CONCRETE VALLEY GUTTER: SEE DETAIL SHT C700
  - NEW BOLLARD (TYP): SEE ARCH PLANS
  - NEW LIGHT POLE AND BASE (TYP): SEE LIGHTING PLANS BY OTHERS.

**SITE PLAN INFORMATION BLOCK**

PROPERTY AREA	283,445.55
EXISTING IMPROVEMENTS	1,100.00
PROPOSED IMPROVEMENT AREA	17,250.00
TOTAL RESERVATION AREA (GROSS SITE)	300,695.55
TOTAL PAVEMENT AREA (GROSS SITE)	1,100.00
IMPERVIOUS SURFACE RATIO	0.366%
BELOW GRADE STALLS	0
BELOW GRADE BY STALLS	0
BELOW GRADE ACCESSIBLE STALLS	0
TOTAL SURFACE PARKING ACCESSIBLE STALLS	0
TOTAL PARKING STALLS	0
EXTERNAL BICYCLE STALLS	0
INTERNAL BICYCLE STALLS	0
TOTAL BICYCLE STALLS	0

△ Revisions

CUP SUBMITTAL  
 HILL VALLEY  
 MULTIFAMILY -  
 PHASE 1

Date Issued: 03/02/26  
 RINKA project #: 25000  
 Sheet Title:

SITE LAYOUT  
 PLAN

Sheet # C100



NOT FOR CONSTRUCTION



ALL IMPROVEMENTS PER  
 CITY OF MADISON PLANS  
 PROJECT NO. 19860  
 CONTRACT NO. 9550

NORTH WING  
 B2A: 1084.0  
 B2B: 1086.0  
 B1: 1096.0  
 FFE: 1106.0

CENTRAL WING  
 B2: 1086.0  
 B1: 1096.0  
 FFE: 1106.0

SOUTH WING  
 B1: 1096.0  
 FFE: 1109.5

- GENERAL NOTES:**
1. ALL WORK WITHIN THE RIGHT-OF-WAY SHALL BE COMPLETED IN ACCORDANCE WITH THE CITY ENGINEERING SPECIFICATIONS FOR PUBLIC WORKS CONSTRUCTION. A CITY OF FIVE-FOOT RIGHT-OF-WAY IS REQUIRED FOR ALL WORK WITHIN THE RIGHT-OF-WAY.
  2. CONTRACTOR IS RESPONSIBLE TO OBTAIN ANY AND ALL PERMITS REQUIRED.
  3. BUILDING CORNERS ARE APPROXIMATE AND FOR GENERAL BUILDING FOOTPRINT ONLY.
  4. IF ANY ERRORS, DISCREPANCIES, OR DIMENSIONS WITH PLAN BECOME APPARENT, IT SHALL BE BROUGHT TO THE ATTENTION OF THE ENGINEER PRIOR TO CONSTRUCTION.
  5. CONTRACTOR SHALL PROTECT ALL STORMWATER DRAINAGE FROM BUILDING FOUNDATIONS DURING FINAL RESTORATION.
  6. ALL DIMENSIONS TO FACE OF CURB UNLESS OTHERWISE NOTED.
  7. CONTRACTOR SHALL PROTECT ALL SIDEWALKS AND CURBS AND NOTIFY THE CITY ENGINEER IMMEDIATELY IF ANY DAMAGE TO CURBS OR SIDEWALKS OCCURS. CURBS AND SIDEWALKS NEEDS TO BE REPLACED BECAUSE IT IS NOT AT A DESIRABLE GRADE.

- GRADING & EROSION CONTROL NOTES:**
1. ALL EROSION CONTROL MEASURES SHALL BE CONSTRUCTED AND MAINTAINED BY THE CONTRACTOR IN ACCORDANCE WITH THE MINNESOTA EAR TO CORNER STANDARDS. IT IS THE CONTRACTOR'S RESPONSIBILITY TO OBTAIN A COPY OF THESE STANDARDS.
  2. INITIAL EROSION CONTROL MEASURES PRIOR TO ANY SITE WORK, INCLUDING GRADING OR DISTURBANCE OF SOIL SURFACE MATERIALS AS SHOWN ON PLAN, MUST BE IN PLACE TO PREVENT EROSION. EROSION CONTROL MEASURES TO MEET UNDESIRABLE FIELD CONDITIONS IF MODIFICATIONS CONFORM TO BEST TECHNICAL STANDARDS.
  3. EROSION CONTROL MEASURES INDICATED ON THE PLANS SHALL BE CONSIDERED MINIMUM. IF DETERMINED NECESSARY DURING CONSTRUCTION ADDITIONAL MEASURES SHALL BE NOTIFIED TO THE ENGINEER FROM THE CONTRACTOR.
  4. INSPECTIONS AND MAINTENANCE OF ALL EROSION CONTROL MEASURES SHALL BE ROUTINE (ONCE PER WEEK MINIMUM) TO ENSURE PROPER FUNCTION OF EROSION CONTROL AT ALL TIMES. EROSION CONTROL MEASURES ARE TO BE MAINTAINED THROUGHOUT THE CONSTRUCTION PERIOD.
  5. MAINTAIN EROSION CONTROL MEASURES AFTER EACH 15:00 OR GREATER RAINFALL. REPAIR ANY DAMAGE OBSERVED DURING THE INSPECTION.
  6. NO SITE GRADING OUTSIDE OF THE LIMITS OF DISTURBANCE.
  7. EROSION CONTROL MEASURES SHALL BE REMOVED ONLY AFTER SITE CONSTRUCTION IS COMPLETE WITH ALL SOIL SURFACES HAVING AN ESTABLISHED VEGETATIVE COVER.
  8. CUT AND FILL SLOPES SHALL BE NO GREATER THAN 3:1 WITH THE EXCEPTION OF SLOPES EXCEEDING 4:1. THE DISTURBED AREA SHALL BE STABILIZED WITH 2:1 SLOPES AND NO LONGER THAN 30 FEET CAN BE ESTABLISHED UNLESS CLASSTYPE 3 EROSION MATS OTHERWISE FOLLOW WISDOT FOR 10:1 EROSION CONTROL MATS.
  9. SLOPES EXCEEDING 4:1 SHALL BE STABILIZED WITH CLASS 1 TYPE B EROSION MATS AND LANDSCAPE STRIPES SHALL BE STABILIZED WITH CLASS 1 TYPE B EROSION MATS.
  10. ALL UNDESIRABLE TRUCK TRACKING FROM CONSTRUCTION AND MATERIAL HANDLING WILL OCCUR ON PAVED ROADS. TRACKING SHALL BE KEPT OFF-SITE AND CLEANED UP AND REMOVED BY THE END OF EACH WORKING DAY USING PROPER DISPOSAL METHODS.
  11. ANY DISTURBED AREA EXPECTED TO BE DOMINANT FOR GREATER THAN 30 DAYS SHALL BE STABILIZED WITH TEMPORARY SEEDING AND MULCH.
  12. PREVENT EXCESSIVE DUST FROM LEAVING THE CONSTRUCTION SITE IN ACCORDANCE WITH LOCAL AND STATE REGULATIONS.
  13. INSTALL EROSION CONTROLS ON THE DOWNSTREAM SIDE OF STOOPLES.
  14. AT A MINIMUM ALL DISTURBED AREAS SHALL RECEIVE A MINIMUM OF 4" OF TOPSOIL, FERTILIZER, SEED AND MULCH. SEED MATURE SHALL BE PROCESSION DOT SEED MIX AND OR EQUIVALENT APPLIED AT A RATE OF 40 POUNDS PER 1000 SQ FT ON ALL DISTURBED AREAS. ANNUAL PRECIPITATION AT A RATE OF 40 POUNDS PER 1000 SQ FT SHALL BE USED TO DETERMINE FERTILIZER RATES. FERTILIZER SHALL BE PLACED PER A SOIL TEST.
  15. EARTHWORK CONTRACTOR TO OVER EXCAVATE/DELEAN OUT ALL LANDSCAPE AREAS TO ALLOW FOR THE PLACEMENT OF 1" OF BLACK DETERIORAL.
  16. CONTRACTOR SHALL VERIFY DEPTH OF ALL UTILITIES TO ENSURE PROPOSED GRADES HAVE SUFFICIENT COVER.
  17. IF EXCESSIVE SETTLEMENT IN THE BASIN IS OBSERVED A SOIL PROBE SHOULD BE COMPLETED TO DETERMINE IF THE ACCUMULATED DEPTH OF SETTLEMENT IN THE BASIN HAS IMPACTED TO POLE PERFORMANCE.
  18. THE RIGHT-OF-WAY IS THE SOLE JURISDICTION OF THE CITY OF MADISON AND IS SUBJECT TO CHANGES AT ANY TIME PER THE RECOMMENDATIONS OF A PLAN OF TRAFFIC ENGINEERING AND THE CITY ENGINEERING DEPARTMENTS.

**GRADING PLAN LEGEND**

	PROPOSED CONTOURS
	EXISTING CONTOURS
	DISTURBED AREA
	SPOT GRADE - TOP (BACK) OF CURB
	SPOT GRADE - TOP OF WALL
	SPOT GRADE - FINISH GRADE (PAVEMENT)
	SPOT GRADE - SIDEWALK FINISH GRADE
	SPOT GRADE - GROUND (BOTTOM OF WALL)

LIMITS OF DISTURBANCE = 256,348 SQ FT  
 = 5.88 AC

△ Revisions

CUP SUBMITTAL  
 HILL VALLEY  
 MULTIFAMILY -  
 PHASE 1

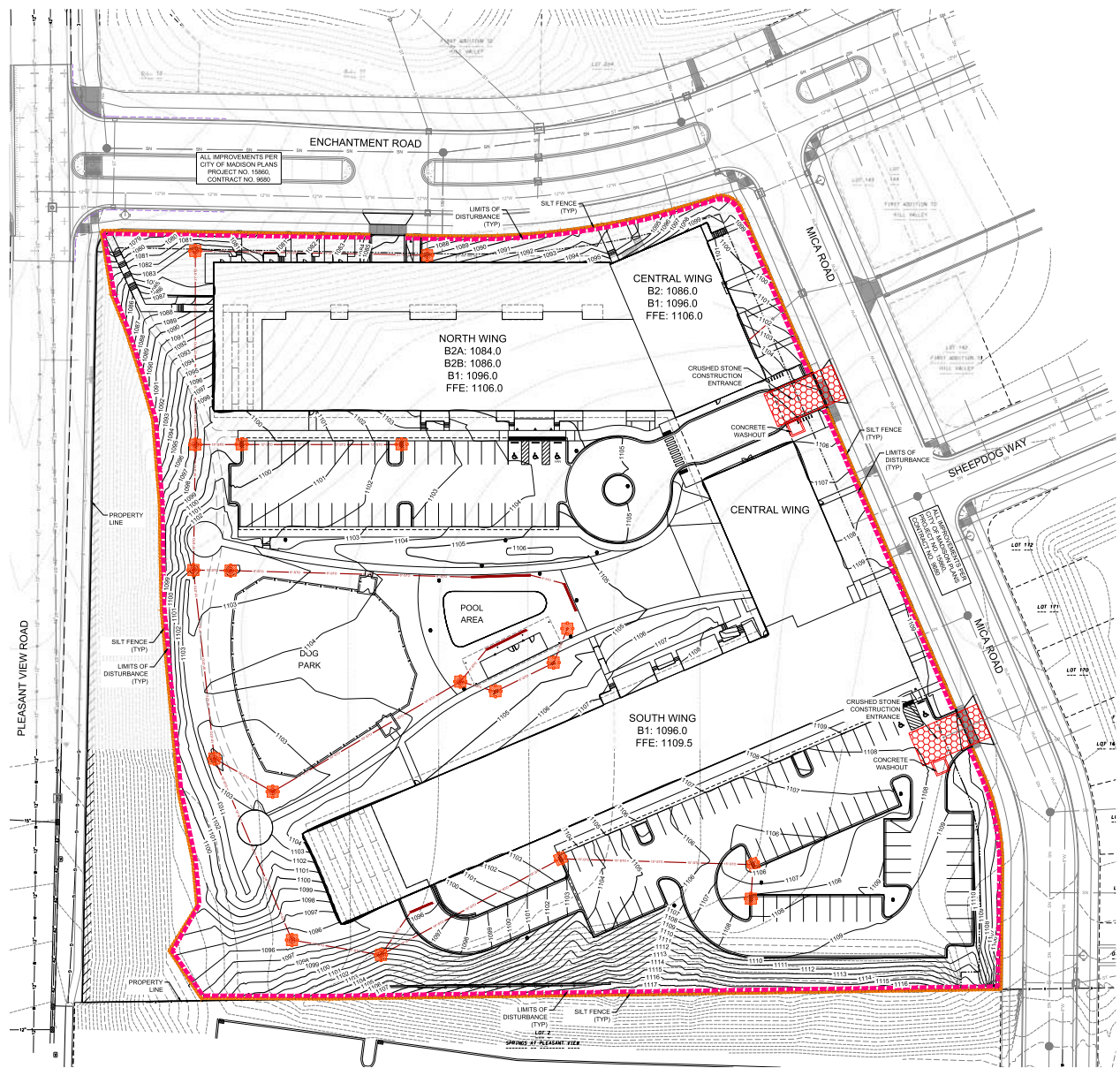
Date Issued: 03/02/25  
 RINKA project #: 25000  
 Sheet Title  
 SITE GRADING  
 PLAN

Sheet #

C200

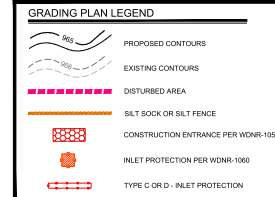


NOT FOR CONSTRUCTION



**GRADING & EROSION CONTROL NOTES:**

1. ALL EROSION CONTROL MEASURES SHALL BE CONSTRUCTED AND MAINTAINED BY THE CONTRACTOR IN ACCORDANCE WITH THE EROSION CONTROL STANDARDS. IT IS THE CONTRACTOR'S RESPONSIBILITY TO OBTAIN A COPY OF THESE STANDARDS.
2. INSTALL EROSION CONTROL MEASURES PRIOR TO ANY SITE WORK, INCLUDING GRADING OR DISTURBANCE OF EXISTING SURFACE MATERIALS AS SHOWN ON PLANS. INDICATIONS TO EROSION CONTROL DESIGN MAY BE CONDUCTED TO MEET UNFORSEEN FIELD CONDITIONS IF MODIFICATIONS CONFORM TO MOST TECHNICAL STANDARDS.
3. EROSION CONTROL MEASURES INDICATED ON THE PLANS SHALL BE CONSIDERED MINIMUM. IF DETERMINED NECESSARY DURING CONSTRUCTION ADDITIONAL MEASURES SHALL BE INSTALLED TO PREVENT SEDIMENT FROM LEAVING THE SITE.
4. INSPECTIONS AND MAINTENANCE OF ALL EROSION CONTROL MEASURES SHALL BE ROUTINE DURING PERIODS OF RAINFALL TO ENSURE PROPER FUNCTION OF EROSION CONTROL AT ALL TIMES. EROSION CONTROL MEASURES ARE TO BE IN WORKING ORDER AT THE END OF EACH WORKING DAY.
5. INDIRECT EROSION CONTROL MEASURES AFTER EACH 12" OR GREATER RAINFALL WITH ANY DAMAGE OBSERVED DURING THE INSPECTION.
6. NO SITE GRADING OUTSIDE OF THE LIMITS OF DISTURBANCE.
7. EROSION CONTROL MEASURES SHALL BE REMOVED ONLY AFTER SITE CONSTRUCTION IS COMPLETE WITH ALL SOIL SURFACES HAVING AN ESTABLISHED VEGETATIVE COVER.
8. CUT AND FILL SLOPES SHALL BE NO GREATER THAN 3:1 WITH THE EXCEPTION OF SLOPES SURROUNDING THE FIRE TOWER BASE OF THE QUALITY AREA OF TYPE II. EROSION MAY NOT EXCEED 10 FEET ABOVE FINISHED GRADE USING CLASS II EROSION MATTING.
9. SLOPES EXCEEDING 4:1 SHALL BE STABILIZED WITH CLASS II TYPE EROSION MATTING AND ALL DRAINAGE SWALES SHALL BE STABILIZED WITH CLASS II TYPE EROSION MATTING.
10. ALL ACCIDENTAL AND TRACKING FROM CONSTRUCTION AND MATERIAL HANDLING SHALL BE CLEANED UP IMMEDIATELY. TRACKING SHALL BE KEPT TO A MINIMUM AND REMOVED BY THE END OF EACH WORKING DAY USING PROPER EROSION METHODS.
11. ANY EXCESSIVE AREA EXPECTED TO BE SOBBY FOR GREATER THAN 5 DAYS SHALL BE STABILIZED WITH TEMPORARY SEEDING AND MULCH.
12. PREVENT EXCESSIVE DUST FROM LEAVING THE CONSTRUCTION SITE IN ACCORDANCE WITH LOCAL AND STATE REGULATIONS.
13. INITIAL EROSION CONTROL ON THE DOWNSTREAM SIDE OF 20:1 SLOPES.
14. AT A MINIMUM ALL DISTURBED AREAS SHALL RECEIVE A MINIMUM OF 4" OF TOPSOIL, FERTILIZER, SEED AND MULCH. SEED MIXTURE SHALL BE SPECIFIC TO SOIL TYPE AND ORIGINALLY APPLIED AT A RATE OF 4 POUNDS PER 1000 SQ FT ON ALL DISTURBED AREAS. ANNUAL PRECIPITATION AT A RATE OF 1.5 POUNDS PER 1000 SQ FT SHALL BE ADDED TO THE MIXTURE. FERTILIZER SHALL BE 10-10-10 PER 1000 SQ FT.
15. EARTHWORK CONTRACTOR TO OVER EXCAVATE/CLEAN OUT ALL LANDSCAPE AREAS TO ALLOW FOR THE PLACEMENT OF 12" OF BLACK DIRT/SOIL.
16. CONTRACTOR SHALL VERIFY DEPTH OF ALL UTILITIES TO ENSURE PROPOSED GRADES HAVE ENOUGH COVER.
17. IF EXCESSIVE SETTLEMENT IN THE BASIN IS OBSERVED A SOILS PROFILE SHOULD BE COMPLETED TO DETERMINE IF THE ACCUMULATED DEPTH OF SETTLEMENT IN THE BASIN HAS IMPACTED FUTURE PERFORMANCE.
18. THE RIGHT OF WAY IS THE SOLE JURISDICTION OF THE CITY OF MADISON AND IS SUBJECT TO CHANGE AT ANY TIME PER THE RECOMMENDATION OF PLAN OF TRAFFIC ENGINEERING AND THE CITY ENGINEERING DEPARTMENTS.



LIMITS OF DISTURBANCE = 256,348 SQ FT  
= 5.88 AC

**SEQUENCE OF CONSTRUCTION**

1. INITIAL EROSION CONTROL MEASURES, BEGIN GRADING AND MASS GRASS SEEDING IN MADISON URBAN PAVED.
2. FOOTINGS & FOUNDATIONS, SHORING START IN MADISON URBAN PAVED.
3. EXISTING CURB & GUTTER START IN MADISON URBAN PAVED.
4. TEMPORARILY STABILIZE ALL EXPOSED AREAS WITH SEED & MULCH.
5. RESTART GRADING AND SEEDING FOR FINAL LANDSCAPING & RESTORATION START IN MADISON URBAN PAVED.
6. FINAL EROSION CONTROL MEASURES WHEN SITE HAS BECOME STABILIZED (90 DAYS).

△ Revisions

CUP SUBMITTAL  
HILL VALLEY  
MULTIFAMILY -  
PHASE 1

Date Issued: 03/02/26  
RINKA project #: 25000  
Sheet Title

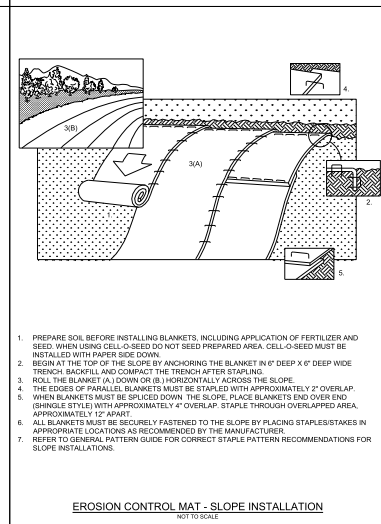
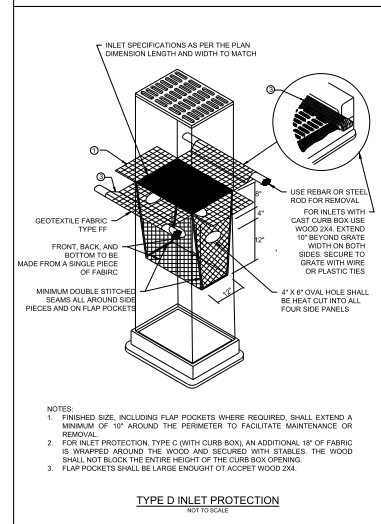
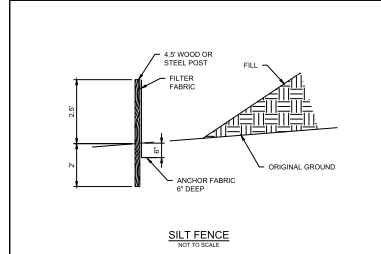
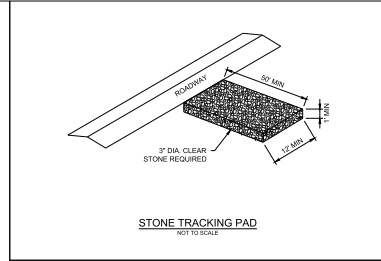
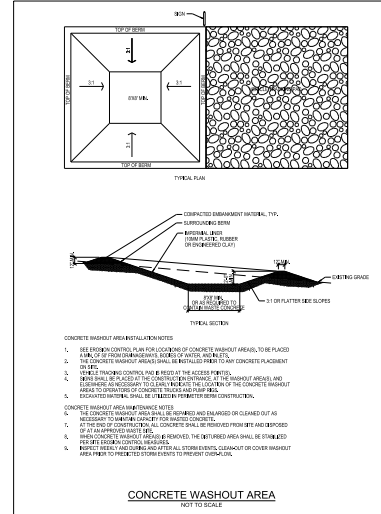
SITE EROSION  
CONTROL PLAN

Sheet #

C300



NOT FOR CONSTRUCTION



△ Revisions

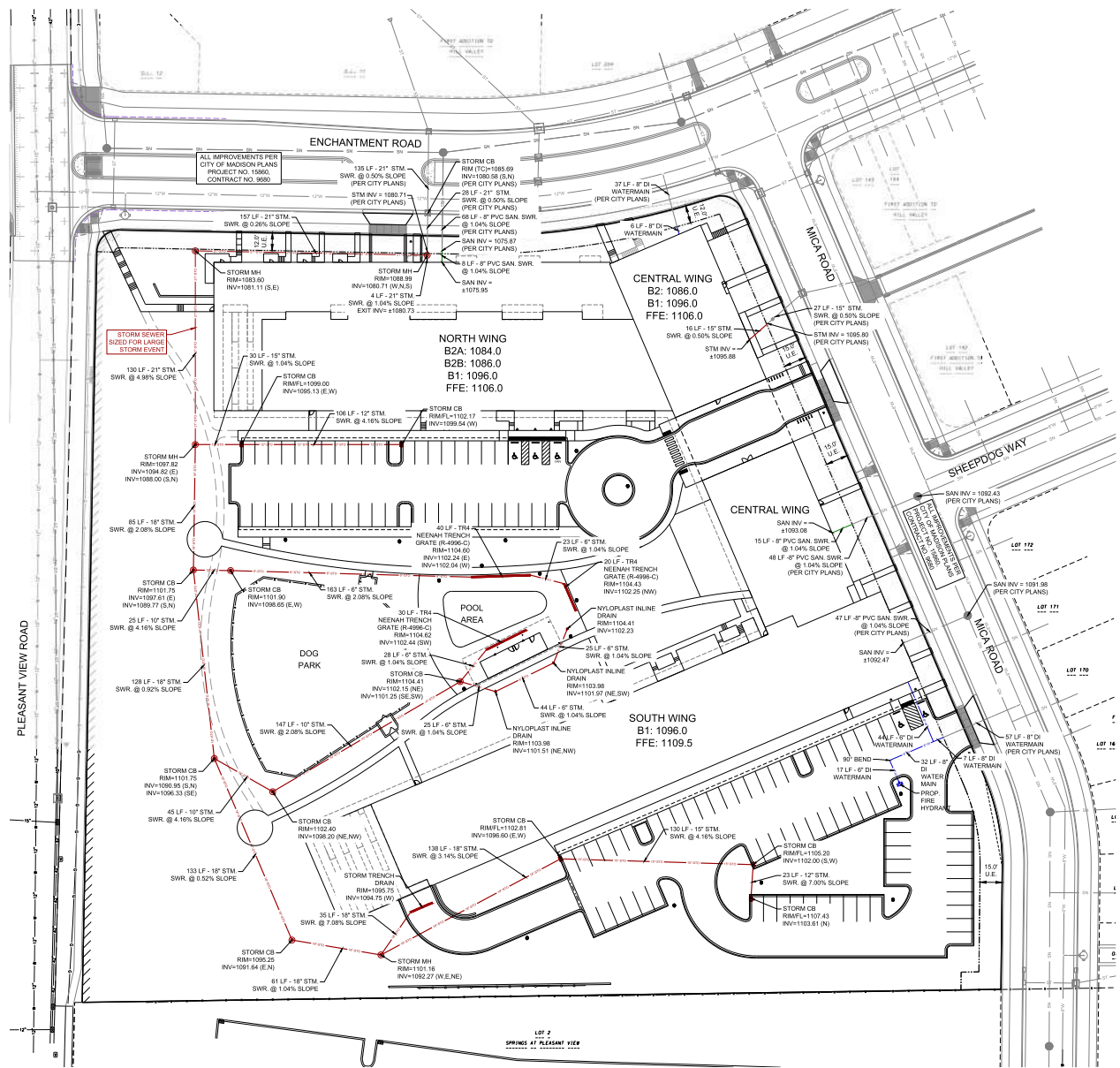
**CUP SUBMITTAL**  
**HILL VALLEY**  
**MULTIFAMILY -**  
**PHASE 1**

Date Issued: 03/02/26  
 RINKA project #: 25000  
 Sheet Title

**EROSION**  
**CONTROL**  
**DETAILS**

Sheet # **C400**

NOT FOR CONSTRUCTION



- SITE UTILITY NOTES:**
1. THE LOCATION OF EXISTING UTILITIES SHOWN ON THE PLANS ARE APPROXIMATE. PROTECTION OF EXISTING UTILITIES IS THE CONTRACTOR'S RESPONSIBILITY.
  2. ALL SITE UTILITY WORK SHALL BE CONSTRUCTED PER THE CITY OF MADISON STANDARD SPECIFICATIONS.
  3. CONTRACTOR TO COORDINATE ELECTRIC, GAS, PHONE & CABLE INSTALLATION WITH THE RESPECTIVE UTILITY COMPANIES.
  4. WATER MAIN SHALL HAVE A MINIMUM 6\"/>

△ Revisions

CUP SUBMITTAL  
 HILL VALLEY  
 MULTIFAMILY -  
 PHASE 1

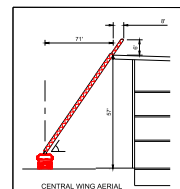
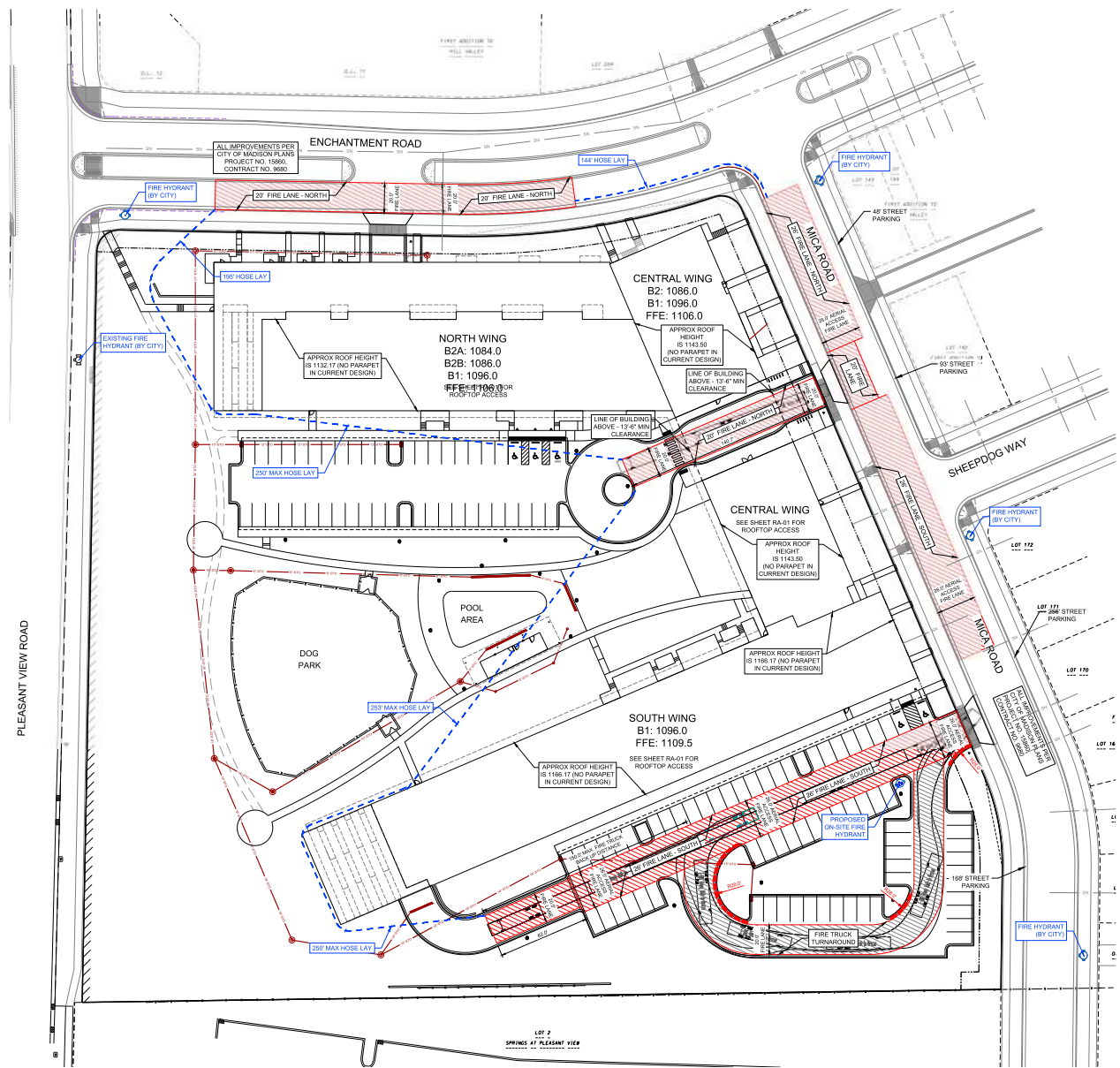
Date Issued: 03/02/26  
 RINKA project #: 25000  
 Sheet Title:

**SITE UTILITY  
 PLAN**

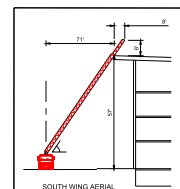
Sheet # **C500**



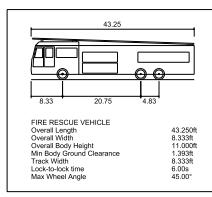
NOT FOR CONSTRUCTION



CENTRAL WING AERIAL LADDER REACH DIAGRAM  
 ENCHANTMENT ROAD SIDE (BLDG 1)  
 APPROXIMATE GROUND ELEVATION @ AERIAL APPROXIMATE ACCESS AREA = XXX.X  
 HEIGHT OF LADDER REACH = XXX.X - XXX.X + XXX.X  
 Building Roof Eave Height: XX'  
 Truck CL. Rotation Point Height: XX'  
 Rise: XX'  
 Aerial Fire Lane CL. to Eave: XX'  
 Run: XX'



SOUTH WING AERIAL LADDER REACH DIAGRAM  
 ENCHANTMENT ROAD SIDE (BLDG 1)  
 APPROXIMATE GROUND ELEVATION @ AERIAL APPROXIMATE ACCESS AREA = XXX.X  
 BUILDING PARAPET ELEVATION = XXX.X  
 HEIGHT OF LADDER REACH = XXX.X - XXX.X + XXX.X  
 Building Roof Eave Height: XX'  
 Truck CL. Rotation Point Height: XX'  
 Rise: XX'  
 Aerial Fire Lane CL. to Eave: XX'  
 Run: XX'



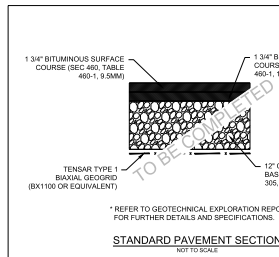
**LEGEND**  
 FIRE LANE ACCESS

△ Revisions

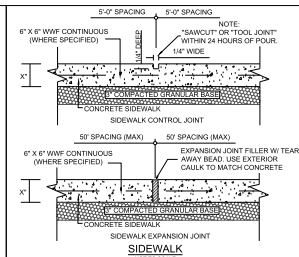
CUP SUBMITTAL  
 HILL VALLEY MULTIFAMILY - PHASE 1

NOT FOR CONSTRUCTION  
 Date Issued: 03/02/26  
 RINKA project #: 25000  
 Sheet Title  
**FIRE ACCESS PLAN**  
 Sheet # **C600**

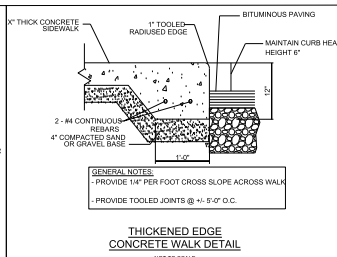




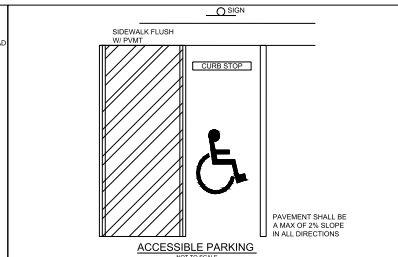
**STANDARD PAVEMENT SECTION**  
NOT TO SCALE



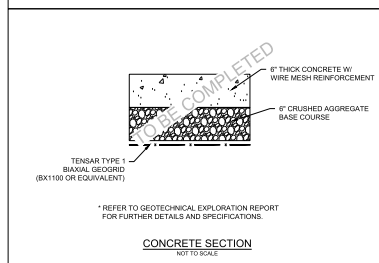
**SIDEWALK**  
NOT TO SCALE



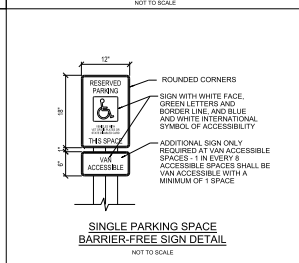
**THICKENED EDGE CONCRETE WALK DETAIL**  
NOT TO SCALE



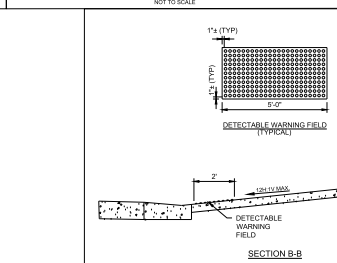
**ACCESSIBLE PARKING**  
NOT TO SCALE



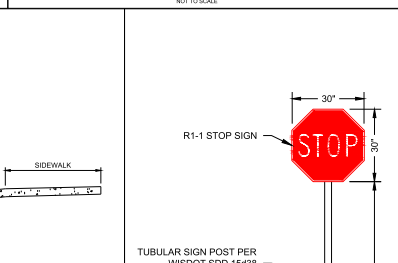
**CONCRETE SECTION**  
NOT TO SCALE



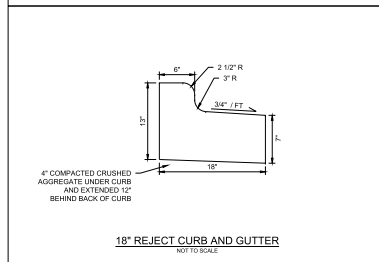
**SINGLE PARKING SPACE BARRIER-FREE SIGN DETAIL**  
NOT TO SCALE



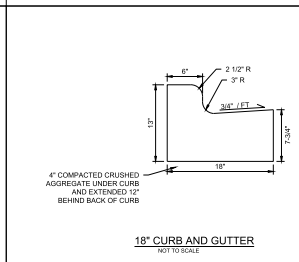
**SECTION B-B**  
NOT TO SCALE



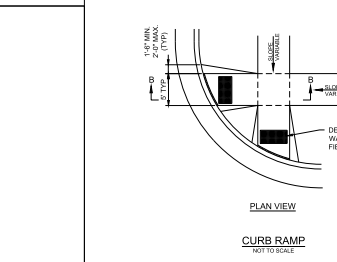
**STOP SIGN**  
NOT TO SCALE



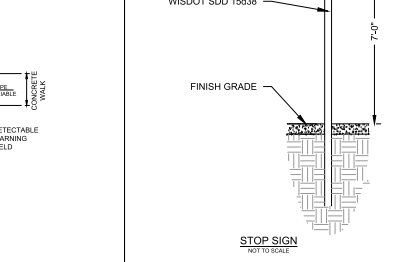
**18\"/>**



**18\"/>**



**CURB RAMP**  
NOT TO SCALE



**STOP SIGN**  
NOT TO SCALE

### ADS FLEXFORM PURE INLET FILTERS

Clear Opening Size	Storm Inlet Size	Minimum System Flow Rate (GPM)
Small: 1 1/2\"/>		

Clear Opening Size	Storm Inlet Size	Minimum System Flow Rate (GPM)
Small: 1 1/2\"/>		

Clear Opening Size	Storm Inlet Size	Minimum System Flow Rate (GPM)
Small: 1 1/2\"/>		

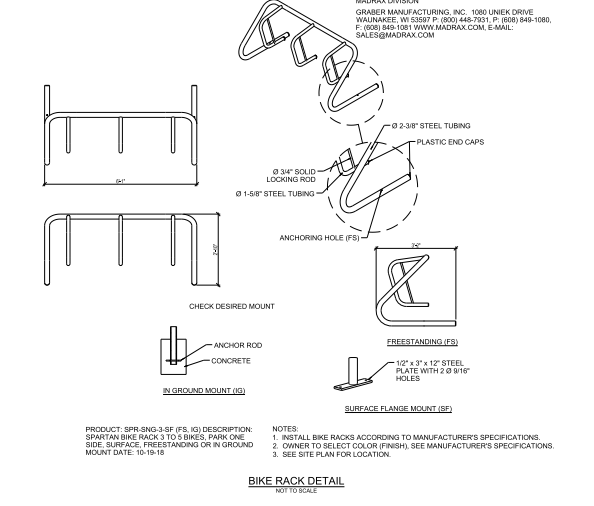
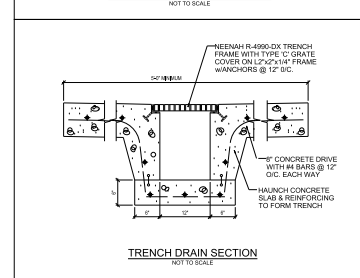
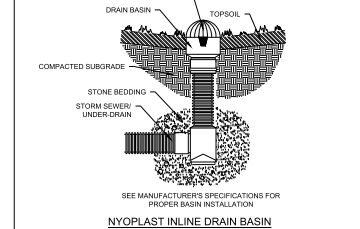
**INSTALLATION INSTRUCTIONS:**

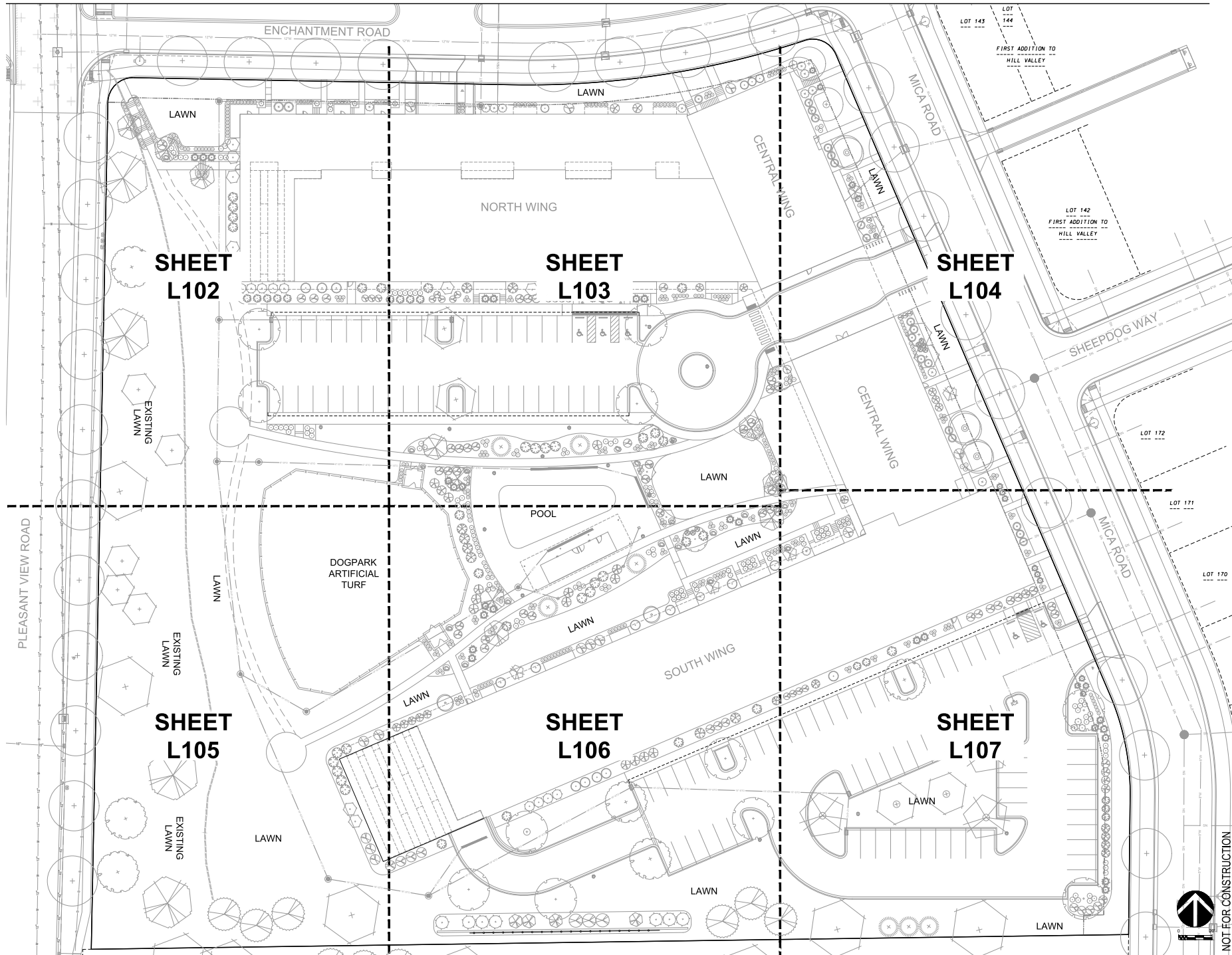
- REMOVE GRATE
- CLEAN GRATE LEDGE
- SET INLET FILTERS ON LOAD BEARING LEDGE OF STRUCTURE
- REPLACE GRATE

**NOTES:**

- ALL FRAMING IS CONSTRUCTED OF 304 STAINLESS STEEL.
- TOTAL BYPASS CAPACITY WILL VARY WITH EACH SIZE DRAINAGE STRUCTURE. ADS DESIGNS FRAMING BYPASS TO MEET OR EXCEED THE DESIGN FLOW OF THE PARTICULAR DRAINAGE STRUCTURE.
- UPON ORDERING, CONFIRMATION OF THE INLET CONFIGURATION, PRECAST/FOUNDRY CASTING MAKE AND MODEL, OR DETAILED DIMENSIONAL FORMS MUST BE PROVIDED TO CONFIGURE AND ASSEMBLE AN INLET FILTER.
- ALL FILTERS MEET ASTM D8857 SPECIFICATIONS.
- FOR WRITTEN SPECIFICATIONS AND MAINTENANCE GUIDELINES VISIT [WWW.ADSIPPE.COM](http://WWW.ADSIPPE.COM).

**ALL PRODUCTS MANUFACTURED BY ADVANCED DRAINAGE SYSTEMS WWW.ADSIPPE.COM PH: 1-800-821-6710**





△ Revisions

CUP SUBMITTAL  
 HILL VALLEY  
 MULTIFAMILY -  
 PHASE 1

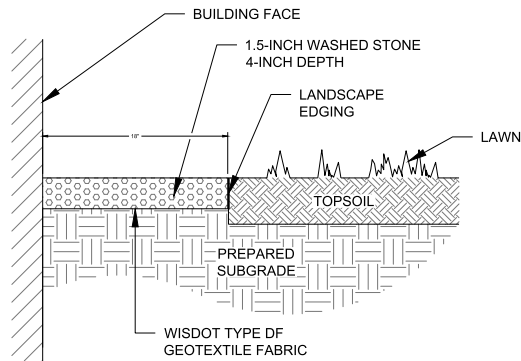
Date Issued: 03/02/26  
 RINKA project #: 25000  
 Sheet Title

LANDSCAPE  
 PLAN

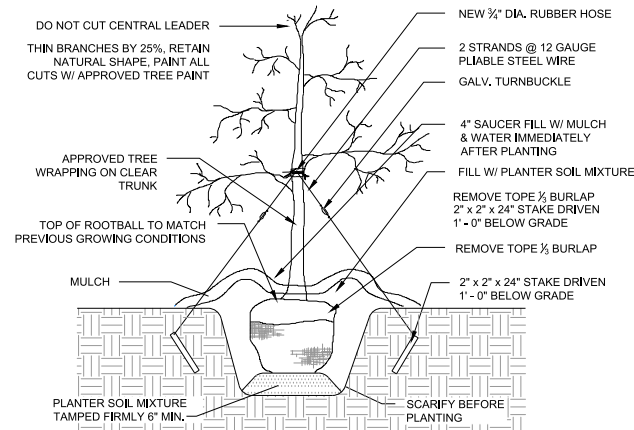
Sheet # **L100**

NOT FOR CONSTRUCTION



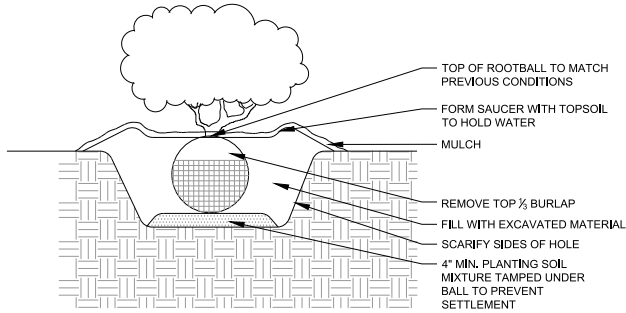


STONE MAINTENANCE EDGE



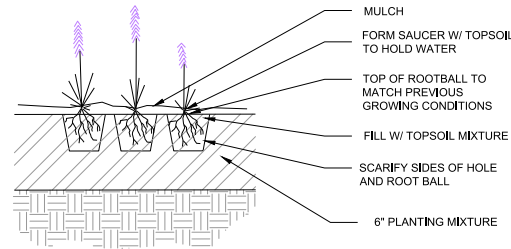
- TREES OF SAME SPECIES TO BE MATCHED IN GROWTH AND UNIFORMITY.
- PLANTING HOLE WIDTH SHALL BE THREE TIMES THE SIZE OF ROOTBALL.
- MINIMUM HEIGHT FOR TREES UNDER 2" CALIPER SHALL BE 10' FROM TOP OF ROOTBALL TO TOP OF TREE

TREE PLANTING DETAIL (N.T.S.)



- \* SHRUBS OF SAME SPECIES TO BE MATCHED IN GROWTH AND UNIFORMITY.
- \* DO NOT PRUNE BEFORE ACCEPTANCE.

SHRUB PLANTING DETAIL (N.T.S.)



- \* PERENNIALS OF SAME SPECIES TO BE MATCHED IN GROWTH AND UNIFORMITY
- \* DO NOT PRUNE BEFORE ACCEPTANCE

ORNAMENTAL GRASS DETAIL (N.T.S.)

LANDSCAPE REQUIREMENTS

**DEVELOPED AREA**  
 GROSS DEVELOPED AREA = 172,571 SQ FT  
 BLDG FOOTPRINT = 74,903 SQ FT  
 NET DEVELOPED AREA = 97,668 SQ FT

5 POINTS PER 300 SQ FT = 1,628 POINTS REQUIRED  
 POINTS PROVIDED = 4,880

**PARKING LOTS (840 POINTS)**  
 PARKING LOT AREA = 47,058  
 REQUIRED PLANTING AREA = 3,765 SQ FT  
 1 TREE PER 160 SQ FT PLANTING AREA = 24 TREES  
 TREES PROVIDED = 24

**STREET FRONTAGE (2,400 POINTS)**  
 FRONTAGE LENGTH = 1,444 FT  
 TREES REQUIRED = 48 (1,680 POINTS)  
 SHRUBS REQUIRED = 240 (720-960 POINTS)

LANDSCAPE NOTES

- CONTACT DIGGERS HOTLINE 3 WORKING DAYS PRIOR TO THE START OF CONSTRUCTION
- CONTRACTOR SHALL VERIFY THE LOCATION OF ALL THE PRIVATE UTILITIES PRIOR TO THE START OF WORK
- ALL LANDSCAPE AREAS SHALL HAVE A MINIMUM 6" DEPTH OF COMPACTED TOPSOIL
- MAINTENANCE STRIPS SHALL BE INSTALLED ADJACENT TO THE BUILDING FOUNDATION WHERE LANDSCAPE BEDS ARE NOT PRESENT - SEE DETAIL
- ALL LANDSCAPE BEDS SHALL CONTAIN A 3-INCH DEPTH OF WASHED STONE PLACED OVER WISDOT TYPE OF GEOTEXTILE FABRIC AND SHALL BE CONTAINED BY LANDSCAPE EDGING UNLESS OTHERWISE NOTED
- LANDSCAPE EDGING SHALL BE A 4" DEEP TRENCH CUT EDGE
- ALL DECIDUOUS TREES IN LAWN AREAS SHALL HAVE A 4-FOOT DIAMETER CIRCLE OF 3-INCH DEPTH SHREDDED HARDWOOD BARK MULCH CONTAINED BY LANDSCAPE EDGING UNLESS INDICATED DIFFERENTLY ON THE PLANS
- ALL EVERGREEN TREES IN TURF AREAS SHALL HAVE A 8" DIAMETER CIRCLE OF 3-INCH DEPTH SHREDDED HARDWOOD BARK MULCH CONTAINED BY LANDSCAPE EDGING UNLESS INDICATED DIFFERENTLY ON THE PLANS
- GENERAL LANDSCAPE AREAS SHALL BE SEEDED WITH MADISON PARKS SEED MIX AS MANUFACTURED BY LA CROSSE SEED, LLC. PER MANUFACTURER'S SPECIFICATIONS
- ALL LANDSCAPING SHALL BE IN ACCORDANCE WITH THE CITY OF MADISON STANDARDS & REQUIREMENTS
- INSTALLATION OF LANDSCAPING SHALL INCLUDE A 1 YEAR LANDSCAPE MAINTENANCE & WARRANTY PERIOD

PLANT SCHEDULE

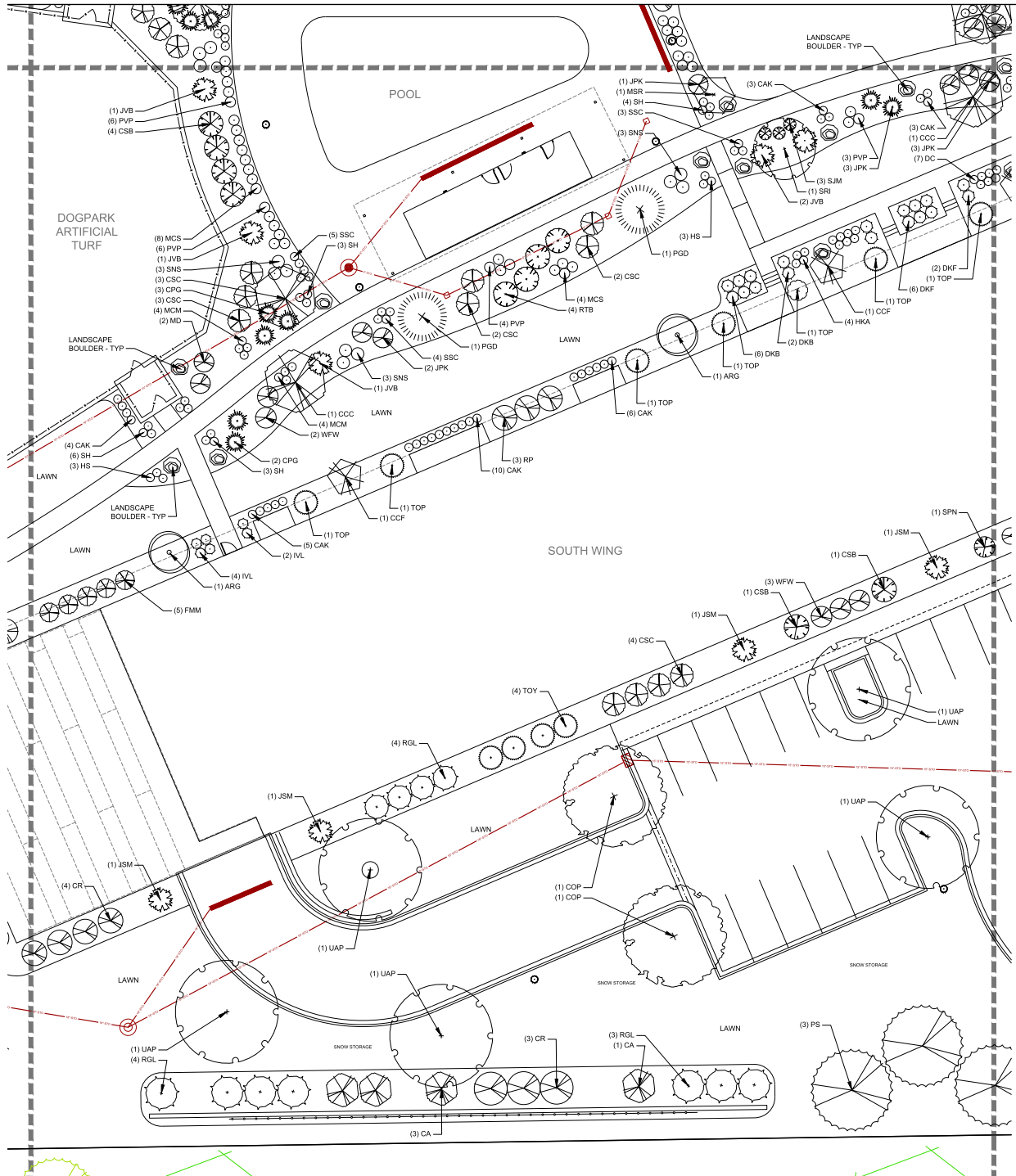
CODE	SCIENTIFIC NAME	COMMON NAME	QTY	PTS PER PLANT	SEED TOTAL	SIZE	ROOT COND
<b>OVERSTORY DECIDUOUS TREES</b>							
WDC	<i>Quercus macrocarpa</i> Oak	American Oak	4	07	76	1.5'	B&B
WPK	<i>Acer x fraxinifolium</i>	Swamp White Birch	2	07	70	1.5'	B&B
WFR	<i>Acer x fraxinifolium</i>	Swamp White Birch	4	07	100	2.0'	B&B
COE	<i>Quercus coccinea</i> 'Strom Plena'	Coastal Plain Red Oak	5	07	210	4.0'	B&B
GSP	<i>Quercus prinus</i> 'Serpens'	Principle Serpentine Oak	3	07	100	2.0'	B&B
WAT	<i>Quercus macrocarpa</i> 'Strom Plena'	Coastal Plain Red Oak	2	07	170	2.0'	B&B
WPK	<i>Quercus macrocarpa</i> 'Strom Plena'	Coastal Plain Red Oak	4	07	140	1.5'	B&B
WCB	<i>Quercus bicolor</i>	Swamp White Oak	8	08	190	2.0'	B&B
WSP	<i>Quercus macrocarpa</i>	Principle Oak	11	07	300	2.0'	B&B
<b>TALL EVERGREEN TREES</b>							
WDL	<i>Thuja occidentalis</i> 'Smaragdina'	Blue Ridge Spruce	2	07	240	12'	B&B
WSS	<i>Thuja occidentalis</i>	Swamp Spruce	2	07	270	12'	B&B
<b>UNDERSTORY TREES</b>							
WDC	<i>Quercus macrocarpa</i> 'Strom Plena'	American Oak	3	12	120	1.5'	B&B
WPK	<i>Quercus macrocarpa</i> 'Strom Plena'	American Oak	3	12	270	1.5'	B&B
WCB	<i>Quercus bicolor</i>	Swamp White Oak	10	12	100	1.5'	B&B
WFR	<i>Quercus macrocarpa</i>	Principle Oak	2	12	30	1.5'	B&B
WPK	<i>Quercus macrocarpa</i>	Principle Oak	2	12	30	1.5'	B&B
WSP	<i>Quercus macrocarpa</i>	Principle Oak	2	12	30	1.5'	B&B
<b>UNDERSTORY EVERGREEN TREES</b>							
WDM	<i>Thuja occidentalis</i> 'Smaragdina'	Blue Ridge Spruce	10	12	120	4'	TALL
WSS	<i>Thuja occidentalis</i>	Swamp Spruce	10	12	120	4'	TALL
WDM	<i>Thuja occidentalis</i> 'Smaragdina'	Blue Ridge Spruce	2	12	240	4'	TALL
WSS	<i>Thuja occidentalis</i>	Swamp Spruce	2	12	240	4'	TALL
<b>PERENNIALS GRASS</b>							
WDC	<i>Quercus macrocarpa</i> 'Strom Plena'	Coastal Plain Red Oak	5	5	75	4'	TALL
WPK	<i>Quercus macrocarpa</i>	Principle Oak	4	5	80	4'	TALL
WCB	<i>Quercus bicolor</i>	Swamp White Oak	10	5	100	4'	TALL
WFR	<i>Quercus macrocarpa</i>	Principle Oak	2	5	20	4'	TALL
WAT	<i>Quercus macrocarpa</i>	Principle Oak	2	5	20	4'	TALL
WPK	<i>Quercus macrocarpa</i>	Principle Oak	2	5	20	4'	TALL
WCB	<i>Quercus bicolor</i>	Swamp White Oak	5	5	75	4'	TALL
WPK	<i>Quercus macrocarpa</i>	Principle Oak	2	5	20	4'	TALL
WAT	<i>Quercus macrocarpa</i>	Principle Oak	2	5	20	4'	TALL
WPK	<i>Quercus macrocarpa</i>	Principle Oak	2	5	20	4'	TALL
WCB	<i>Quercus bicolor</i>	Swamp White Oak	2	5	20	4'	TALL
WPK	<i>Quercus macrocarpa</i>	Principle Oak	2	5	20	4'	TALL
WAT	<i>Quercus macrocarpa</i>	Principle Oak	2	5	20	4'	TALL
WPK	<i>Quercus macrocarpa</i>	Principle Oak	2	5	20	4'	TALL
WCB	<i>Quercus bicolor</i>	Swamp White Oak	2	5	20	4'	TALL
WPK	<i>Quercus macrocarpa</i>	Principle Oak	2	5	20	4'	TALL
WAT	<i>Quercus macrocarpa</i>	Principle Oak	2	5	20	4'	TALL
WPK	<i>Quercus macrocarpa</i>	Principle Oak	2	5	20	4'	TALL
WCB	<i>Quercus bicolor</i>	Swamp White Oak	2	5	20	4'	TALL
WPK	<i>Quercus macrocarpa</i>	Principle Oak	2	5	20	4'	TALL
WAT	<i>Quercus macrocarpa</i>	Principle Oak	2	5	20	4'	TALL
WPK	<i>Quercus macrocarpa</i>	Principle Oak	2	5	20	4'	TALL
WCB	<i>Quercus bicolor</i>	Swamp White Oak	2	5	20	4'	TALL
WPK	<i>Quercus macrocarpa</i>	Principle Oak	2	5	20	4'	TALL
WAT	<i>Quercus macrocarpa</i>	Principle Oak	2	5	20	4'	TALL
WPK	<i>Quercus macrocarpa</i>	Principle Oak	2	5	20	4'	TALL
WCB	<i>Quercus bicolor</i>	Swamp White Oak	2	5	20	4'	TALL
WPK	<i>Quercus macrocarpa</i>	Principle Oak	2	5	20	4'	TALL
WAT	<i>Quercus macrocarpa</i>	Principle Oak	2	5	20	4'	TALL
WPK	<i>Quercus macrocarpa</i>	Principle Oak	2	5	20	4'	TALL
WCB	<i>Quercus bicolor</i>	Swamp White Oak	2	5	20	4'	TALL
WPK	<i>Quercus macrocarpa</i>	Principle Oak	2	5	20	4'	TALL
WAT	<i>Quercus macrocarpa</i>	Principle Oak	2	5	20	4'	TALL
WPK	<i>Quercus macrocarpa</i>	Principle Oak	2	5	20	4'	TALL
WCB	<i>Quercus bicolor</i>	Swamp White Oak	2	5	20	4'	TALL
WPK	<i>Quercus macrocarpa</i>	Principle Oak	2	5	20	4'	TALL
WAT	<i>Quercus macrocarpa</i>	Principle Oak	2	5	20	4'	TALL
WPK	<i>Quercus macrocarpa</i>	Principle Oak	2	5	20	4'	TALL
WCB	<i>Quercus bicolor</i>	Swamp White Oak	2	5	20	4'	TALL
WPK	<i>Quercus macrocarpa</i>	Principle Oak	2	5	20	4'	TALL
WAT	<i>Quercus macrocarpa</i>	Principle Oak	2	5	20	4'	TALL
WPK	<i>Quercus macrocarpa</i>	Principle Oak	2	5	20	4'	TALL
WCB	<i>Quercus bicolor</i>	Swamp White Oak	2	5	20	4'	TALL
WPK	<i>Quercus macrocarpa</i>	Principle Oak	2	5	20	4'	TALL
WAT	<i>Quercus macrocarpa</i>	Principle Oak	2	5	20	4'	TALL
WPK	<i>Quercus macrocarpa</i>	Principle Oak	2	5	20	4'	TALL
WCB	<i>Quercus bicolor</i>	Swamp White Oak	2	5	20	4'	TALL
WPK	<i>Quercus macrocarpa</i>	Principle Oak	2	5	20	4'	TALL
WAT	<i>Quercus macrocarpa</i>	Principle Oak	2	5	20	4'	TALL
WPK	<i>Quercus macrocarpa</i>	Principle Oak	2	5	20	4'	TALL
WCB	<i>Quercus bicolor</i>	Swamp White Oak	2	5	20	4'	TALL
WPK	<i>Quercus macrocarpa</i>	Principle Oak	2	5	20	4'	TALL
WAT	<i>Quercus macrocarpa</i>	Principle Oak	2	5	20	4'	TALL
WPK	<i>Quercus macrocarpa</i>	Principle Oak	2	5	20	4'	TALL
WCB	<i>Quercus bicolor</i>	Swamp White Oak	2	5	20	4'	TALL
WPK	<i>Quercus macrocarpa</i>	Principle Oak	2	5	20	4'	TALL
WAT	<i>Quercus macrocarpa</i>	Principle Oak	2	5	20	4'	TALL
WPK	<i>Quercus macrocarpa</i>	Principle Oak	2	5	20	4'	TALL
WCB	<i>Quercus bicolor</i>	Swamp White Oak	2	5	20	4'	TALL
WPK	<i>Quercus macrocarpa</i>	Principle Oak	2	5	20	4'	TALL
WAT	<i>Quercus macrocarpa</i>	Principle Oak	2	5	20	4'	TALL
WPK	<i>Quercus macrocarpa</i>	Principle Oak	2	5	20	4'	TALL
WCB	<i>Quercus bicolor</i>	Swamp White Oak	2	5	20	4'	TALL
WPK	<i>Quercus macrocarpa</i>	Principle Oak	2	5	20	4'	TALL
WAT	<i>Quercus macrocarpa</i>	Principle Oak	2	5	20	4'	TALL
WPK	<i>Quercus macrocarpa</i>	Principle Oak	2	5	20	4'	TALL
WCB	<i>Quercus bicolor</i>	Swamp White Oak	2	5	20	4'	TALL
WPK	<i>Quercus macrocarpa</i>	Principle Oak	2	5	20	4'	TALL
WAT	<i>Quercus macrocarpa</i>	Principle Oak	2	5	20	4'	TALL
WPK	<i>Quercus macrocarpa</i>	Principle Oak	2	5	20	4'	TALL
WCB	<i>Quercus bicolor</i>	Swamp White Oak	2	5	20	4'	TALL
WPK	<i>Quercus macrocarpa</i>	Principle Oak	2	5	20	4'	TALL
WAT	<i>Quercus macrocarpa</i>	Principle Oak	2	5	20	4'	TALL
WPK	<i>Quercus macrocarpa</i>	Principle Oak	2	5	20	4'	TALL
WCB	<i>Quercus bicolor</i>	Swamp White Oak	2	5	20	4'	TALL
WPK	<i>Quercus macrocarpa</i>	Principle Oak	2	5	20	4'	TALL
WAT	<i>Quercus macrocarpa</i>	Principle Oak	2	5	20	4'	TALL
WPK	<i>Quercus macrocarpa</i>	Principle Oak	2	5	20	4'	TALL
WCB	<i>Quercus bicolor</i>	Swamp White Oak	2	5	20	4'	TALL
WPK	<i>Quercus macrocarpa</i>	Principle Oak	2	5	20	4'	TALL
WAT	<i>Quercus macrocarpa</i>	Principle Oak	2	5	20	4'	TALL
WPK	<i>Quercus macrocarpa</i>	Principle Oak	2	5	20	4'	TALL
WCB	<i>Quercus bicolor</i>	Swamp White Oak	2	5	20	4'	TALL
WPK	<i>Quercus macrocarpa</i>	Principle Oak	2	5	20	4'	TALL
WAT	<i>Quercus macrocarpa</i>	Principle Oak	2	5	20	4'	TALL
WPK	<i>Quercus macrocarpa</i>	Principle Oak	2	5	20	4'	TALL
WCB	<i>Quercus bicolor</i>	Swamp White Oak	2	5	20	4'	TALL
WPK	<i>Quercus macrocarpa</i>	Principle Oak	2	5	20	4'	TALL
WAT	<i>Quercus macrocarpa</i>	Principle Oak	2	5	20	4'	TALL
WPK	<i>Quercus macrocarpa</i>	Principle Oak	2	5	20	4'	TALL
WCB	<i>Quercus bicolor</i>	Swamp White Oak	2	5	20	4'	TALL
WPK	<i>Quercus macrocarpa</i>	Principle Oak	2	5	20	4'	TALL
WAT	<i>Quercus macrocarpa</i>	Principle Oak	2	5	20	4'	TALL
WPK	<i>Quercus macrocarpa</i>	Principle Oak	2	5	20	4'	TALL
WCB	<i>Quercus bicolor</i>	Swamp White Oak	2	5	20	4'	TALL
WPK	<i>Quercus macrocarpa</i>	Principle Oak	2	5	20	4'	TALL
WAT	<i>Quercus macrocarpa</i>	Principle Oak	2	5	20	4'	TALL
WPK	<i>Quercus macrocarpa</i>	Principle Oak	2	5	20	4'	TALL
WCB	<i>Quercus bicolor</i>	Swamp White Oak	2	5	20	4'	TALL
WPK	<i>Quercus macrocarpa</i>	Principle Oak	2	5	20	4'	TALL
WAT	<i>Quercus macrocarpa</i>	Principle Oak	2	5	20	4'	TALL
WPK	<i>Quercus macrocarpa</i>	Principle Oak	2	5	20	4'	TALL
WCB	<i>Quercus bicolor</i>	Swamp White Oak	2	5	20	4'	TALL
WPK	<i>Quercus macrocarpa</i>	Principle Oak	2	5	20	4'	TALL
WAT	<i>Quercus macrocarpa</i>	Principle Oak	2	5	20	4'	TALL
WPK	<i>Quercus macrocarpa</i>	Principle Oak	2	5	20	4'	TALL
WCB	<i>Quercus bicolor</i>	Swamp White Oak	2	5	20	4'	TALL
WPK	<i>Quercus macrocarpa</i>	Principle Oak	2	5	20	4'	TALL
WAT	<i>Quercus macrocarpa</i>	Principle Oak	2	5	20	4'	TALL
WPK	<i>Quercus macrocarpa</i>	Principle Oak	2	5	20	4'	TALL
WCB	<i>Quercus bicolor</i>	Swamp White Oak	2				











## LANDSCAPE REQUIREMENTS

**DEVELOPED AREA**  
 GROSS DEVELOPED AREA = 172,571 SQ FT  
 BLDG FOOTPRINT = 74,903 SQ FT  
 NET DEVELOPED AREA = 97,668 SQ FT

5 POINTS PER 300 SQ FT = 1,628 POINTS REQUIRED  
 POINTS PROVIDED = 4,880

**PARKING LOTS (840 POINTS)**  
 PARKING LOT AREA = 47,058  
 REQUIRED PLANTING AREA = 3,765 SQ FT  
 1 TREE PER 160 SQ FT PLANTING AREA = 24 TREES  
 TREES PROVIDED = 24

**STREET FRONTAGE (2,400 POINTS)**  
 FRONTAGE LENGTH = 1,444 FT  
 TREES REQUIRED = 48 (1,680 POINTS)  
 SHRUBS REQUIRED = 240 (720-960 POINTS)

## LANDSCAPE NOTES

- CONTACT DIGGERS HOTLINE 3 WORKING DAYS PRIOR TO THE START OF CONSTRUCTION
- CONTRACTOR SHALL VERIFY THE LOCATION OF ALL THE PRIVATE UTILITIES PRIOR TO THE START OF WORK
- ALL LANDSCAPE AREAS SHALL HAVE A MINIMUM 6" DEPTH OF COMPACTED TOPSOIL
- MAINTENANCE STRIPS SHALL BE INSTALLED ADJACENT TO THE BUILDING FOUNDATION WHERE LANDSCAPE BEDS ARE NOT PRESENT - SEE DETAIL
- ALL LANDSCAPE BEDS SHALL CONTAIN A 3-INCH DEPTH OF WASHED STONE PLACED OVER WISDOT TYPE DE GEOTEXTILE FABRIC AND SHALL BE CONTAINED BY LANDSCAPE EDGING UNLESS OTHERWISE NOTED
- LANDSCAPE EDGING SHALL BE A 4" DEEP TRENCH CUT EDGE
- ALL DECIDUOUS TREES IN LAWN AREAS SHALL HAVE A 4-FOOT DIAMETER CIRCLE OF 3-INCH DEPTH SHREDDED HARDWOOD BARK MULCH CONTAINED BY LANDSCAPE EDGING UNLESS INDICATED DIFFERENTLY ON THE PLANS
- ALL EVERGREEN TREES IN TURF AREAS SHALL HAVE A 8" DIAMETER CIRCLE OF 3-INCH DEPTH SHREDDED HARDWOOD BARK MULCH CONTAINED BY LANDSCAPE EDGING UNLESS INDICATED DIFFERENTLY ON THE PLANS
- GENERAL LANDSCAPE AREAS SHALL BE SEEDDED WITH MADISON PARKS SEED MIX AS MANUFACTURED BY LA CROSSE SEED, LLC. PER MANUFACTURER'S SPECIFICATIONS
- ALL LANDSCAPING SHALL BE IN ACCORDANCE WITH THE CITY OF MADISON STANDARDS & REQUIREMENTS
- INSTALLATION OF LANDSCAPING SHALL INCLUDE A 1 YEAR LANDSCAPE MAINTENANCE & WARRANTY PERIOD

## PLANT SCHEDULE

CODE	SCIENTIFIC NAME	COMMON NAME	QTY	PTS PER PLANT	SUB-TOTAL	ROOT COND
DECIDUOUS TREES						
AKC	Acer glabrum	Smooth Bark Maple	1	100	100	B&B
AKG	Acer glabrum 'Green Leaf'	Green Leaf Maple	1	100	100	B&B
AKR	Acer glabrum 'Red Spire'	Red Spire Maple	1	100	100	B&B
AKS	Acer glabrum 'Spectacular'	Spectacular Maple	1	100	100	B&B
AKT	Acer glabrum 'Sunrise'	Sunrise Maple	1	100	100	B&B
AKU	Acer glabrum 'Winter White'	Winter White Maple	1	100	100	B&B
AKV	Acer glabrum 'Zigzag'	Zigzag Maple	1	100	100	B&B
AKW	Acer glabrum 'Ballerina'	Ballerina Maple	1	100	100	B&B
AKX	Acer glabrum 'Crown of Thorns'	Crown of Thorns Maple	1	100	100	B&B
AKY	Acer glabrum 'Flamingo'	Flamingo Maple	1	100	100	B&B
AKZ	Acer glabrum 'Lunar White'	Lunar White Maple	1	100	100	B&B
ALB	Alnus incana	White Birch	1	100	100	B&B
ALC	Alnus incana 'Blue Star'	Blue Star Birch	1	100	100	B&B
ALD	Alnus incana 'Candy Stripe'	Candy Stripe Birch	1	100	100	B&B
ALE	Alnus incana 'Emerald Green'	Emerald Green Birch	1	100	100	B&B
ALF	Alnus incana 'Gold Leaf'	Gold Leaf Birch	1	100	100	B&B
ALG	Alnus incana 'Green Leaf'	Green Leaf Birch	1	100	100	B&B
ALH	Alnus incana 'Lunar White'	Lunar White Birch	1	100	100	B&B
ALI	Alnus incana 'Polar Star'	Polar Star Birch	1	100	100	B&B
ALJ	Alnus incana 'Royal Star'	Royal Star Birch	1	100	100	B&B
ALK	Alnus incana 'Silver Star'	Silver Star Birch	1	100	100	B&B
ALM	Alnus incana 'White Star'	White Star Birch	1	100	100	B&B
ALN	Alnus incana 'Yellow Star'	Yellow Star Birch	1	100	100	B&B
ALO	Alnus incana 'Zigzag'	Zigzag Birch	1	100	100	B&B
ALP	Alnus incana 'Crown of Thorns'	Crown of Thorns Birch	1	100	100	B&B
ALQ	Alnus incana 'Flamingo'	Flamingo Birch	1	100	100	B&B
ALR	Alnus incana 'Lunar White'	Lunar White Birch	1	100	100	B&B
ALS	Alnus incana 'Polar Star'	Polar Star Birch	1	100	100	B&B
ALT	Alnus incana 'Royal Star'	Royal Star Birch	1	100	100	B&B
ALU	Alnus incana 'Silver Star'	Silver Star Birch	1	100	100	B&B
ALV	Alnus incana 'White Star'	White Star Birch	1	100	100	B&B
ALW	Alnus incana 'Yellow Star'	Yellow Star Birch	1	100	100	B&B
ALX	Alnus incana 'Zigzag'	Zigzag Birch	1	100	100	B&B
ALY	Alnus incana 'Crown of Thorns'	Crown of Thorns Birch	1	100	100	B&B
ALZ	Alnus incana 'Flamingo'	Flamingo Birch	1	100	100	B&B
AMA	Amelanchier canadensis	Shadbush	1	100	100	B&B
AMB	Amelanchier canadensis 'Blue Chip'	Blue Chip Shadbush	1	100	100	B&B
AMC	Amelanchier canadensis 'Candy Stripe'	Candy Stripe Shadbush	1	100	100	B&B
AMD	Amelanchier canadensis 'Emerald Green'	Emerald Green Shadbush	1	100	100	B&B
AME	Amelanchier canadensis 'Gold Leaf'	Gold Leaf Shadbush	1	100	100	B&B
AMF	Amelanchier canadensis 'Green Leaf'	Green Leaf Shadbush	1	100	100	B&B
AMG	Amelanchier canadensis 'Lunar White'	Lunar White Shadbush	1	100	100	B&B
AMH	Amelanchier canadensis 'Polar Star'	Polar Star Shadbush	1	100	100	B&B
AMI	Amelanchier canadensis 'Royal Star'	Royal Star Shadbush	1	100	100	B&B
AMJ	Amelanchier canadensis 'Silver Star'	Silver Star Shadbush	1	100	100	B&B
AMK	Amelanchier canadensis 'White Star'	White Star Shadbush	1	100	100	B&B
AML	Amelanchier canadensis 'Yellow Star'	Yellow Star Shadbush	1	100	100	B&B
AMM	Amelanchier canadensis 'Zigzag'	Zigzag Shadbush	1	100	100	B&B
AMN	Amelanchier canadensis 'Crown of Thorns'	Crown of Thorns Shadbush	1	100	100	B&B
AMO	Amelanchier canadensis 'Flamingo'	Flamingo Shadbush	1	100	100	B&B
AMP	Amelanchier canadensis 'Lunar White'	Lunar White Shadbush	1	100	100	B&B
AMQ	Amelanchier canadensis 'Polar Star'	Polar Star Shadbush	1	100	100	B&B
AMR	Amelanchier canadensis 'Royal Star'	Royal Star Shadbush	1	100	100	B&B
AMS	Amelanchier canadensis 'Silver Star'	Silver Star Shadbush	1	100	100	B&B
AMT	Amelanchier canadensis 'White Star'	White Star Shadbush	1	100	100	B&B
AMU	Amelanchier canadensis 'Yellow Star'	Yellow Star Shadbush	1	100	100	B&B
AMV	Amelanchier canadensis 'Zigzag'	Zigzag Shadbush	1	100	100	B&B
AMW	Amelanchier canadensis 'Crown of Thorns'	Crown of Thorns Shadbush	1	100	100	B&B
AMX	Amelanchier canadensis 'Flamingo'	Flamingo Shadbush	1	100	100	B&B
AMY	Amelanchier canadensis 'Lunar White'	Lunar White Shadbush	1	100	100	B&B
AMZ	Amelanchier canadensis 'Polar Star'	Polar Star Shadbush	1	100	100	B&B
ANA	Anemone pulsatilla	Pulsatilla	1	100	100	B&B
ANB	Anemone pulsatilla 'Blue Star'	Blue Star Pulsatilla	1	100	100	B&B
ANC	Anemone pulsatilla 'Candy Stripe'	Candy Stripe Pulsatilla	1	100	100	B&B
AND	Anemone pulsatilla 'Emerald Green'	Emerald Green Pulsatilla	1	100	100	B&B
ANE	Anemone pulsatilla 'Gold Leaf'	Gold Leaf Pulsatilla	1	100	100	B&B
ANF	Anemone pulsatilla 'Green Leaf'	Green Leaf Pulsatilla	1	100	100	B&B
ANG	Anemone pulsatilla 'Lunar White'	Lunar White Pulsatilla	1	100	100	B&B
ANH	Anemone pulsatilla 'Polar Star'	Polar Star Pulsatilla	1	100	100	B&B
ANI	Anemone pulsatilla 'Royal Star'	Royal Star Pulsatilla	1	100	100	B&B
ANJ	Anemone pulsatilla 'Silver Star'	Silver Star Pulsatilla	1	100	100	B&B
ANK	Anemone pulsatilla 'White Star'	White Star Pulsatilla	1	100	100	B&B
ANL	Anemone pulsatilla 'Yellow Star'	Yellow Star Pulsatilla	1	100	100	B&B
ANM	Anemone pulsatilla 'Zigzag'	Zigzag Pulsatilla	1	100	100	B&B
ANN	Anemone pulsatilla 'Crown of Thorns'	Crown of Thorns Pulsatilla	1	100	100	B&B
ANO	Anemone pulsatilla 'Flamingo'	Flamingo Pulsatilla	1	100	100	B&B
ANP	Anemone pulsatilla 'Lunar White'	Lunar White Pulsatilla	1	100	100	B&B
ANQ	Anemone pulsatilla 'Polar Star'	Polar Star Pulsatilla	1	100	100	B&B
ANR	Anemone pulsatilla 'Royal Star'	Royal Star Pulsatilla	1	100	100	B&B
ANS	Anemone pulsatilla 'Silver Star'	Silver Star Pulsatilla	1	100	100	B&B
ANT	Anemone pulsatilla 'White Star'	White Star Pulsatilla	1	100	100	B&B
ANU	Anemone pulsatilla 'Yellow Star'	Yellow Star Pulsatilla	1	100	100	B&B
ANV	Anemone pulsatilla 'Zigzag'	Zigzag Pulsatilla	1	100	100	B&B
ANW	Anemone pulsatilla 'Crown of Thorns'	Crown of Thorns Pulsatilla	1	100	100	B&B
ANX	Anemone pulsatilla 'Flamingo'	Flamingo Pulsatilla	1	100	100	B&B
ANY	Anemone pulsatilla 'Lunar White'	Lunar White Pulsatilla	1	100	100	B&B
ANZ	Anemone pulsatilla 'Polar Star'	Polar Star Pulsatilla	1	100	100	B&B
AOA	Asplenium adnigrum	Rock Fern	1	100	100	B&B
AOB	Asplenium adnigrum 'Blue Star'	Blue Star Rock Fern	1	100	100	B&B
AOC	Asplenium adnigrum 'Candy Stripe'	Candy Stripe Rock Fern	1	100	100	B&B
AOD	Asplenium adnigrum 'Emerald Green'	Emerald Green Rock Fern	1	100	100	B&B
AOE	Asplenium adnigrum 'Gold Leaf'	Gold Leaf Rock Fern	1	100	100	B&B
AOF	Asplenium adnigrum 'Green Leaf'	Green Leaf Rock Fern	1	100	100	B&B
AOG	Asplenium adnigrum 'Lunar White'	Lunar White Rock Fern	1	100	100	B&B
AOH	Asplenium adnigrum 'Polar Star'	Polar Star Rock Fern	1	100	100	B&B
AOI	Asplenium adnigrum 'Royal Star'	Royal Star Rock Fern	1	100	100	B&B
AOJ	Asplenium adnigrum 'Silver Star'	Silver Star Rock Fern	1	100	100	B&B
AOK	Asplenium adnigrum 'White Star'	White Star Rock Fern	1	100	100	B&B
AOL	Asplenium adnigrum 'Yellow Star'	Yellow Star Rock Fern	1	100	100	B&B
AOM	Asplenium adnigrum 'Zigzag'	Zigzag Rock Fern	1	100	100	B&B
AON	Asplenium adnigrum 'Crown of Thorns'	Crown of Thorns Rock Fern	1	100	100	B&B
AOO	Asplenium adnigrum 'Flamingo'	Flamingo Rock Fern	1	100	100	B&B
AOP	Asplenium adnigrum 'Lunar White'	Lunar White Rock Fern	1	100	100	B&B
AOQ	Asplenium adnigrum 'Polar Star'	Polar Star Rock Fern	1	100	100	B&B
AOR	Asplenium adnigrum 'Royal Star'	Royal Star Rock Fern	1	100	100	B&B
AOS	Asplenium adnigrum 'Silver Star'	Silver Star Rock Fern	1	100	100	B&B
AOT	Asplenium adnigrum 'White Star'	White Star Rock Fern	1	100	100	B&B
AOU	Asplenium adnigrum 'Yellow Star'	Yellow Star Rock Fern	1	100	100	B&B
AOV	Asplenium adnigrum 'Zigzag'	Zigzag Rock Fern	1	100	100	B&B
AOW	Asplenium adnigrum 'Crown of Thorns'	Crown of Thorns Rock Fern	1	100	100	B&B
AOX	Asplenium adnigrum 'Flamingo'	Flamingo Rock Fern	1	100	100	B&B
AOY	Asplenium adnigrum 'Lunar White'	Lunar White Rock Fern	1	100	100	B&B
AOZ	Asplenium adnigrum 'Polar Star'	Polar Star Rock Fern	1	100	100	B&B
AOA	Asplenium adnigrum 'Royal Star'	Royal Star Rock Fern	1	100	100	B&B
AOB	Asplenium adnigrum 'Silver Star'	Silver Star Rock Fern	1	100	100	B&B
AOC	Asplenium adnigrum 'White Star'	White Star Rock Fern	1	100	100	B&B
AOD	Asplenium adnigrum 'Yellow Star'	Yellow Star Rock Fern	1	100	100	B&B
AOE	Asplenium adnigrum 'Zigzag'	Zigzag Rock Fern	1	100	100	B&B
AOF	Asplenium adnigrum 'Crown of Thorns'	Crown of Thorns Rock Fern	1	100	100	B&B
AOG	Asplenium adnigrum 'Flamingo'	Flamingo Rock Fern	1	100	100	B&B
AOH	Asplenium adnigrum 'Lunar White'	Lunar White Rock Fern	1	100	100	B&B
AOI	Asplenium adnigrum 'Polar Star'	Polar Star Rock Fern	1	100	100	B&B
AOJ	Asplenium adnigrum 'Royal Star'	Royal Star Rock Fern	1	100	100	B&B
AOK	Asplenium adnigrum 'Silver Star'	Silver Star Rock Fern	1	100	100	B&B
AOL	Asplenium adnigrum 'White Star'	White Star Rock Fern	1	100	100	B&B
AOM	Asplenium adnigrum 'Yellow Star'	Yellow Star Rock Fern	1	100	100	B&B
AON	Asplenium adnigrum 'Zigzag'	Zigzag Rock Fern	1	100	100	B&B
AOO	Asplenium adnigrum 'Crown of Thorns'	Crown of Thorns Rock Fern	1	100	100	B&B
AOP	Asplenium adnigrum 'Flamingo'	Flamingo Rock Fern	1	100	100	B&B
AOQ	Asplenium adnigrum 'Lunar White'	Lunar White Rock Fern	1	100	100	B&B
AOR	Asplenium adnigrum 'Polar Star'	Polar Star Rock Fern	1	100	100	B&B
AOS	Asplenium adnigrum 'Royal Star'	Royal Star Rock Fern	1	100	100	B&B
AOT	Asplenium adnigrum 'Silver Star'	Silver Star Rock Fern	1	100	100	B&B
AOU	Asplenium adnigrum 'White Star'	White Star Rock Fern	1	100	100	B&B
AOV	Asplenium adnigrum 'Yellow Star'	Yellow Star Rock Fern	1	100	100	B&B
AOW	Asplenium adnigrum 'Zigzag'	Zigzag Rock Fern	1	100	100	B&B
AOX	Asplenium adnigrum 'Crown of Thorns'	Crown of Thorns Rock Fern	1	100	100	B&B
AOY	Asplenium adnigrum 'Flamingo'	Flamingo Rock Fern	1	100	100	B&B
AOZ	Asplenium adnigrum 'Lunar White'	Lunar White Rock Fern	1	100	100	B&B
AOA	Asplenium adnigrum 'Polar Star'	Polar Star Rock Fern	1	100	100	B&B
AOB	Asplenium adnigrum 'Royal Star'	Royal Star Rock Fern	1	100	100	B&B
AOC	Asplenium adnigrum 'Silver Star'	Silver Star Rock Fern	1	100	100	B&B
AOD	Asplenium adnigrum 'White Star'	White Star Rock Fern	1	100	100	B&B
AOE	Asplenium adnigrum 'Yellow Star'	Yellow Star Rock Fern	1	100	100	B&B
AOF	Asplenium adnigrum 'Zigzag'	Zigzag Rock Fern	1	100	100	B&B
AOG	Asplenium adnigrum 'Crown of Thorns'	Crown of Thorns Rock Fern	1	100	100	B&B
AOH	Asplenium adnigrum 'Flamingo'	Flamingo Rock Fern	1	100	100	B&B
AOI	Asplenium adnigrum 'Lunar White'	Lunar White Rock Fern	1	100	100	B&B
AOJ	Asplenium adnigrum 'Polar Star'	Polar Star Rock Fern	1	100</		



## Modular Corral



### Overview:

The Modular Corral combines the intuitive ease of bike docks with the benefit of a freestanding configuration in a multi-space bike rack. Modular in nature, this bike rack can be connected and expanded to fit the given installation area and angled to create additional space and convenience.

### Benefits:

- Compatible with both styles of Saris Bike Dock
- Easy access for maintenance and street cleaning
- Can be used freestanding or anchored to surface
- Durable galvanized coat finish is corrosion-resistant and has long-term lifespan
- 4, 6, 8, 10, or 12 bike options
- Meets APBP parking guidelines



# Modular Corral

## Recommended Setbacks

### Features:



Accommodates  
4, 6, 8, 10 or 12  
bikes



4"x 1.5"  
C-channel



Galvanized finish



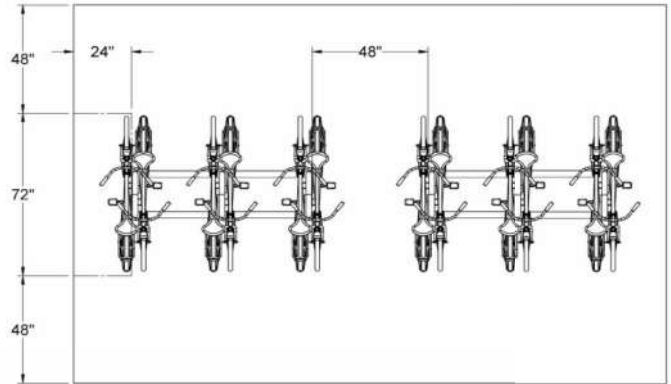
Temporary anchors: 29173  
Permanent anchors: 6259



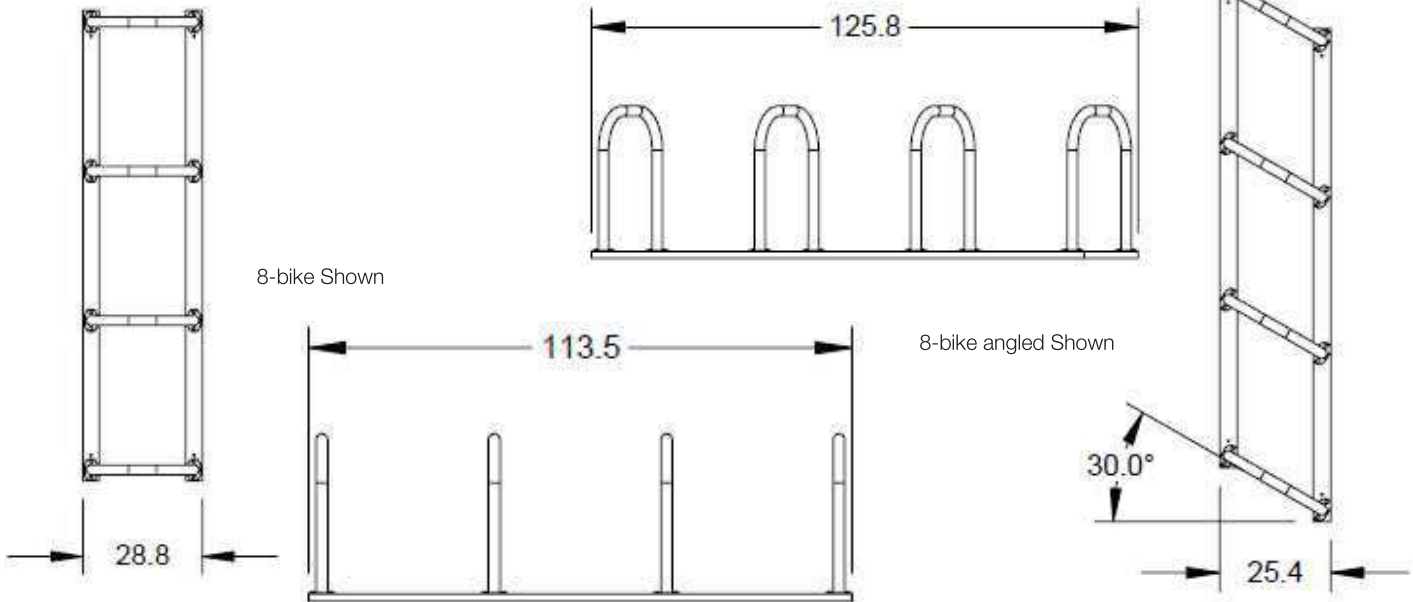
1 year  
warranty



Made in  
the USA



Anchors sold separately



### DIMENSIONS

Model #	# Bikes	Length Straight	Length Angled	Width Straight	Width Angled	Height
28360	6	77.45"	89.8"	28.8"	25.4"	35"
28359	4	41.45"	53.8"	28.8"	25.4"	35"
Connector Kit						
28362						

## Vertical Rack



### Overview:

When floor space is at a premium, the Vertical Rack is the perfect solution. This highly configurable, space-efficient multi-bike rack maximizes your indoor parking capacity. With adjustable trac mounts, you can choose from multiple bike spacing options and secure parking for narrower road wheels, all the way up to full-size fat tires.

### Benefits:

- Adjustable mounting system for Bike Tracs allows multiple spacing options ranging from 15" – 24"
- Pivoting lock bar allows optimized locking position on all bikes and is shaped to prevent theft by use of pipe cutter
- Full-length bike tracs provide support for both front and rear wheels for greater stability and accommodate up to 5" wide tires
- Tracs can be staggered in height to limit handlebar interference between bikes
- Available in single- and double-sided configurations with locking and non-locking options

# Vertical Rack

## Recommended Setbacks

### Features:



3, 4, 5- bike single-sided options  
6, 8, 10-bike double-sided options



87" minimum ceiling height;  
93" recommended ceiling height



TGIC black powder coat finish

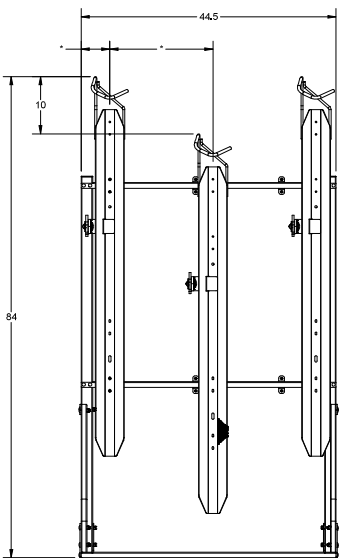
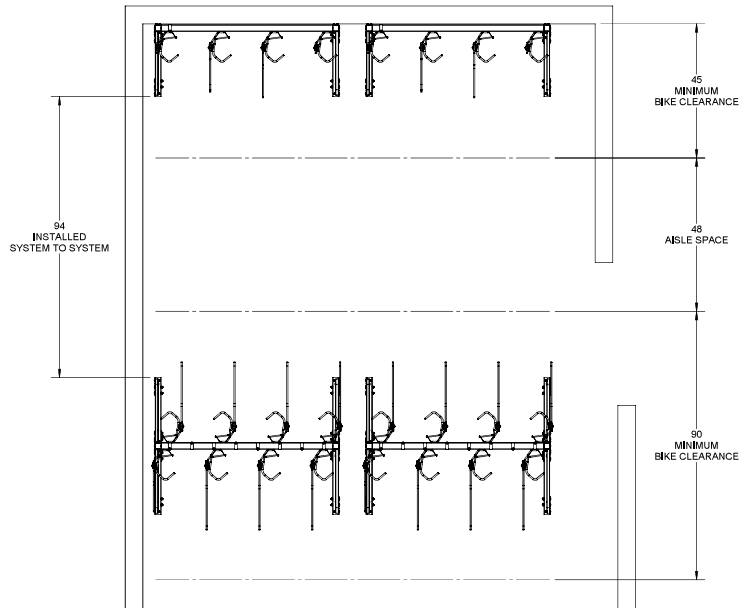


Recommended anchor:  
29173

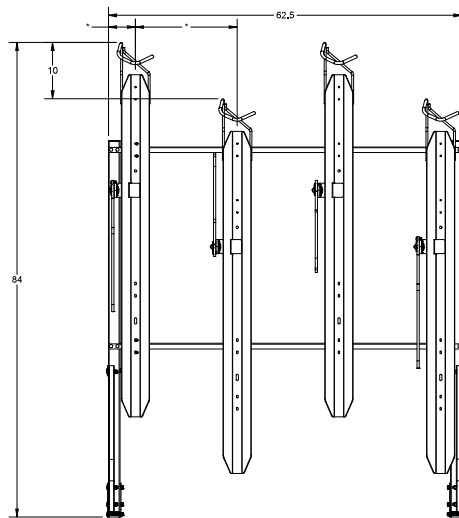


1 year warranty

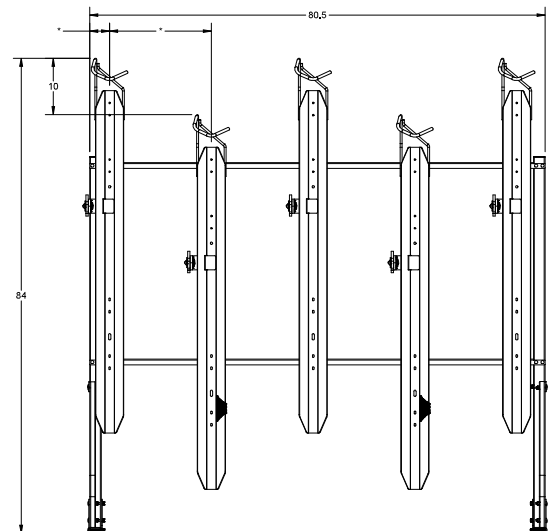
Anchors sold separately



8133V Shown



8144V Shown



8155V Shown

DIMENSIONS				
Model #	Single Sided (SS)/ Double Sided (DS)	Total # of Bikes Parked	Bike Spacing	Frame Width
Non-Locking				
8033V	SS	3	15-18"	44.5"
8034V	SS	3	24"	62.5"
8044V	SS	4	15-18"	62.5"
8045V	SS	4	24"	80.5"
8055V	SS	5	15-18"	80.5"
8066V	DS	6	15-18"	44.5"
8068V	DS	6	24"	62.5"
8088V	DS	8	15-18"	62.5"
8080V	DS	8	24"	80.5"
8000V	DS	10	15-18"	80.5"

DIMENSIONS				
Model #	Single Sided (SS)/ Double Sided (DS)	Total # of Bikes Parked	Bike Spacing	Frame Width
Locking				
8133V	SS	3	15-18"	44.5"
8134V	SS	3	24"	62.5"
8144V	SS	4	15-18"	62.5"
8145V	SS	4	24"	80.5"
8155V	SS	5	15-18"	80.5"
8166V	DS	6	15-18"	44.5"
8168V	DS	6	24"	62.5"
8188V	DS	8	15-18"	62.5"
8180V	DS	8	24"	80.5"
8100V	DS	10	15-18"	80.5"